

2009 Backcountry Statistics

(From overnight backcountry permits)

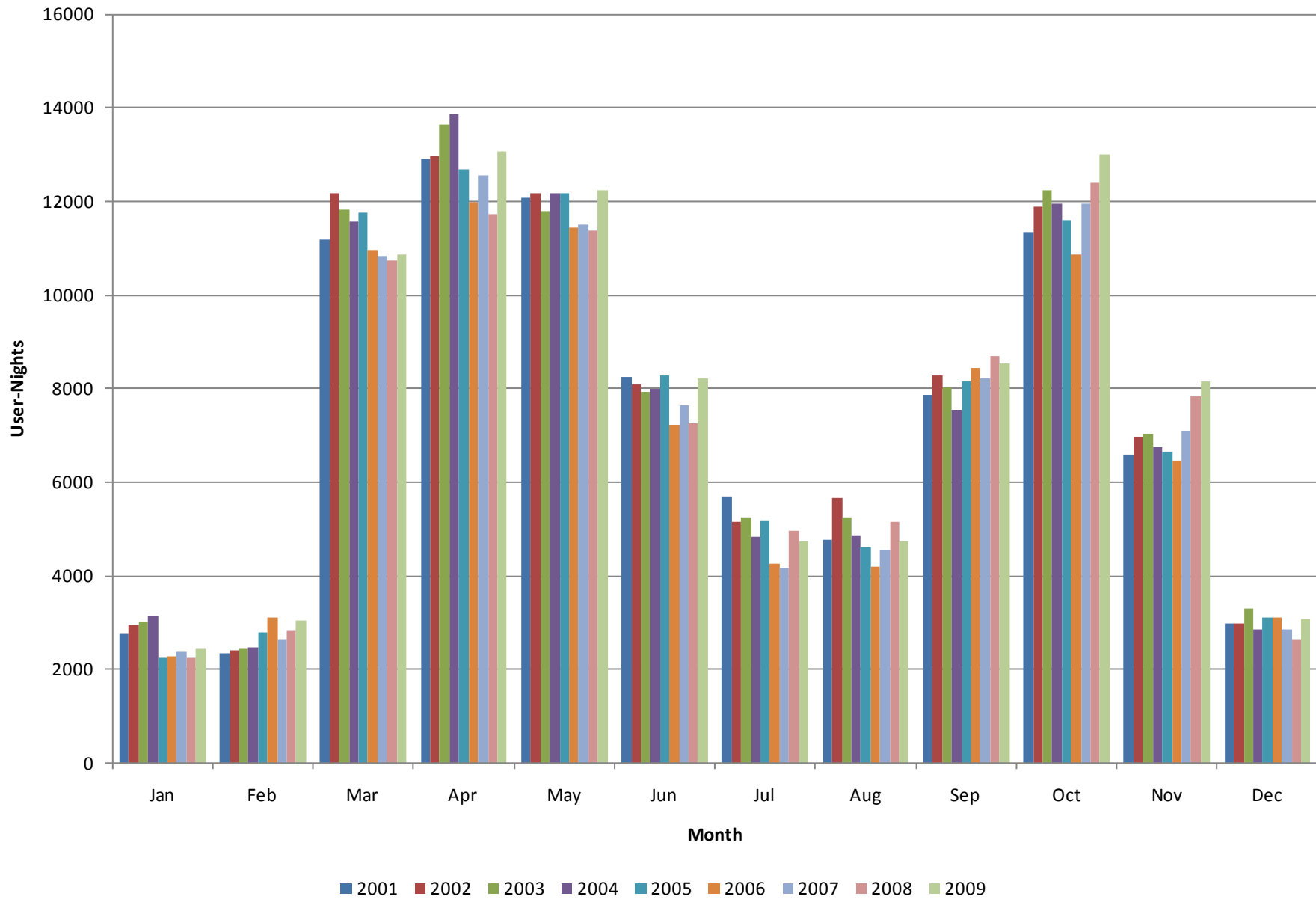
-compiled by Steve Sullivan, Permits Program Manager

Contents

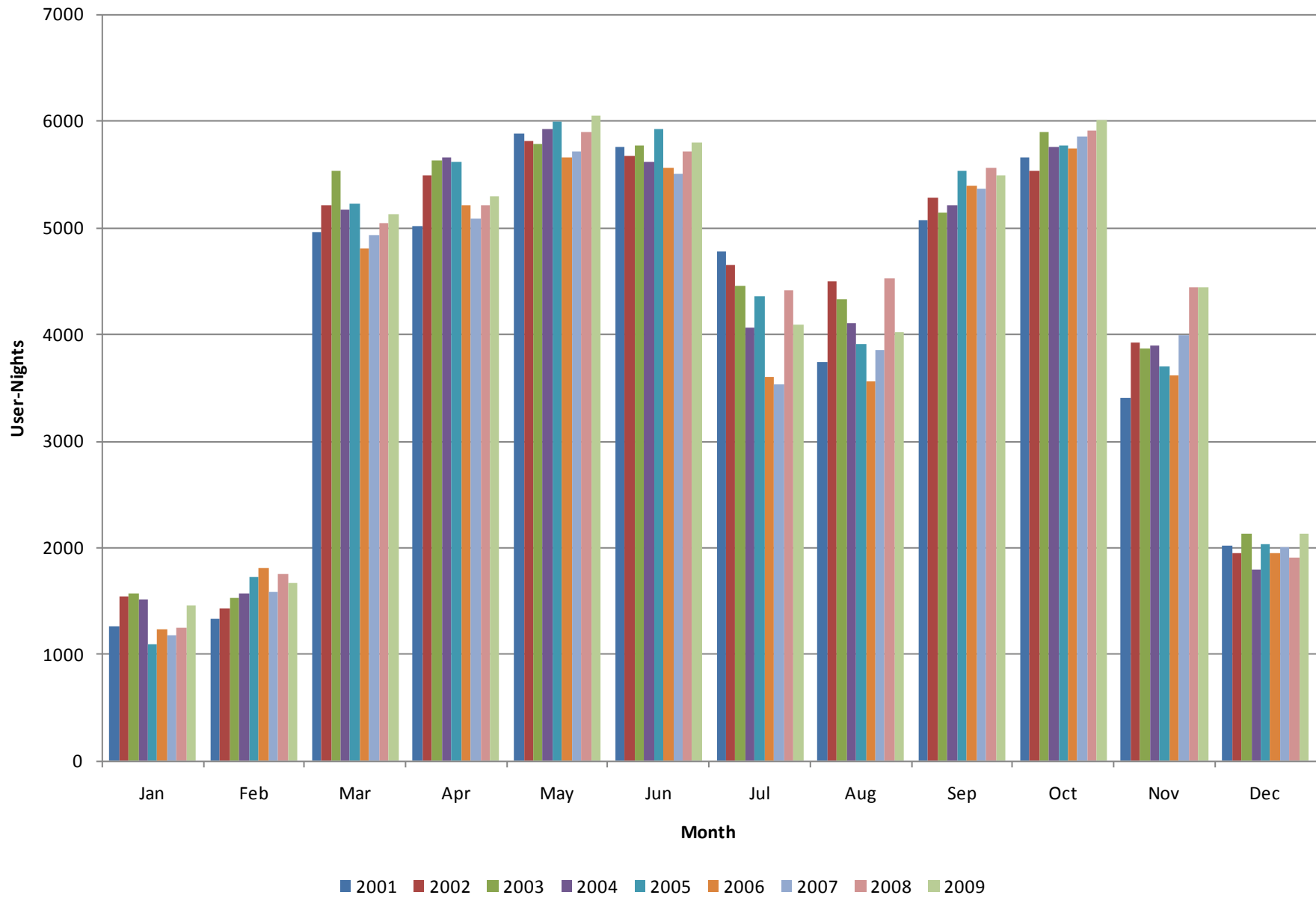
Backpacking Permits

Use Trends: 1998-2009.....	2
Visitation from Countries and States.....	5
Field Institute, Boy Scout, and CUAs.....	7
Use in Each Area	
Summary.....	8
By Area then Month.....	10
By Month then Area.....	29

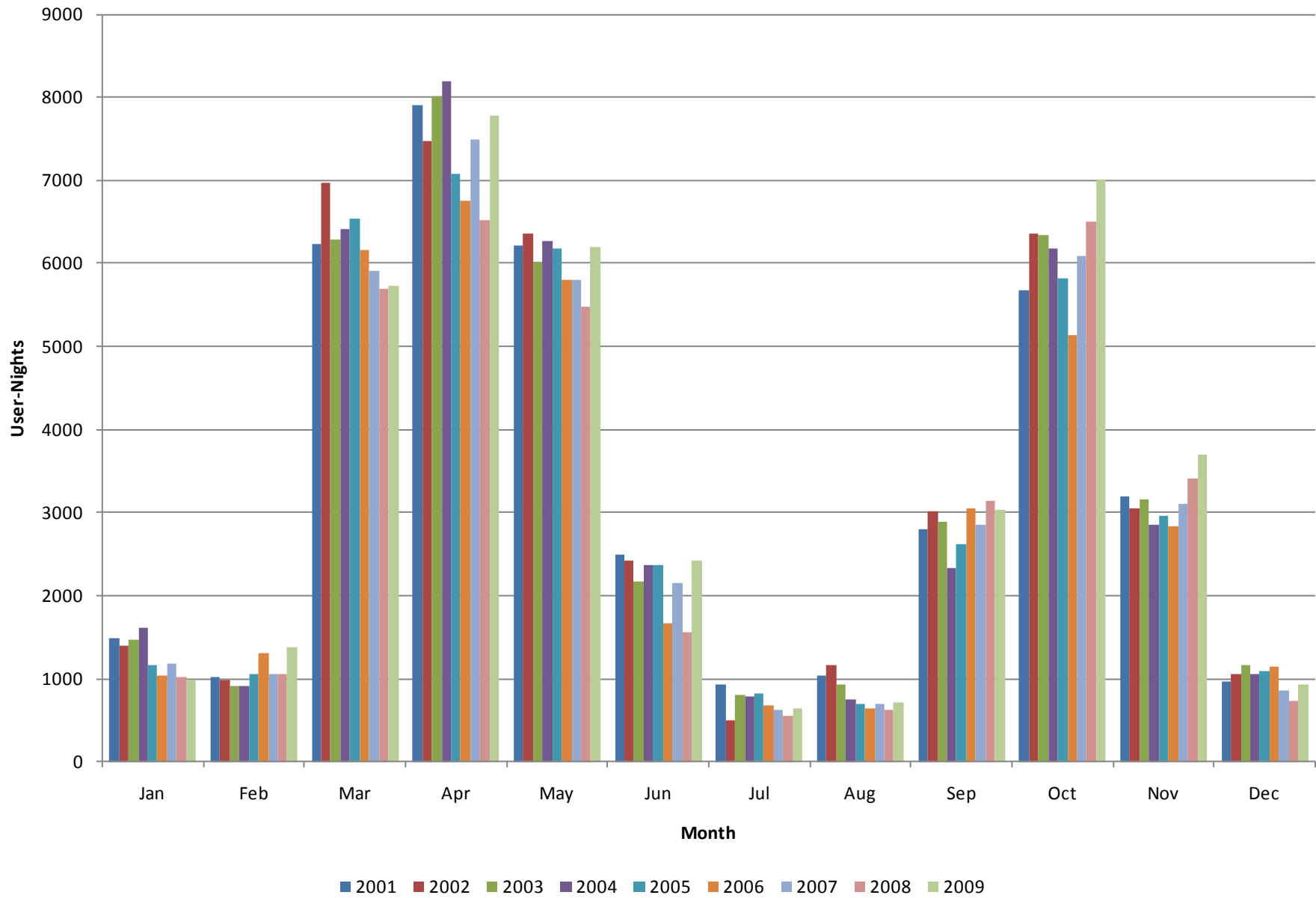
Backcountry Use Trends, 2001-2009



Corridor Campground Use Trends, 2001-2009



Non-Corridor Backcountry Use Trends, 2001-2009

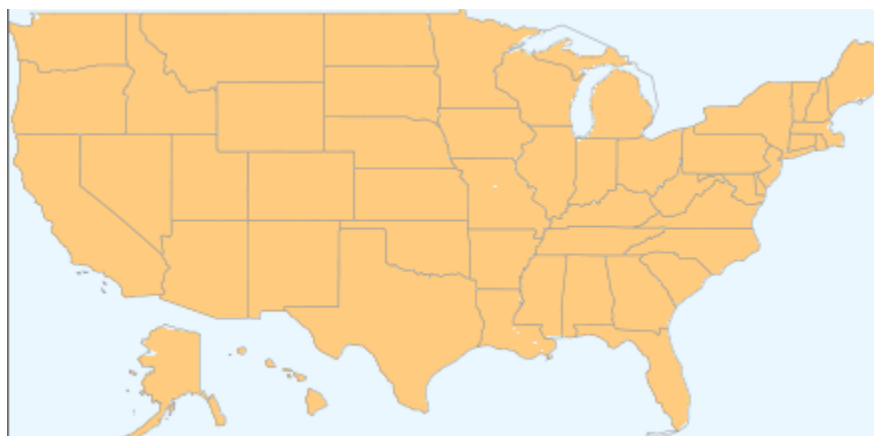


2009 Backcountry Use by Country



<u>Country</u>	<u>Permits</u>	<u>People</u>	<u>Rank</u>
USA	10,652	34,725	1
CANADA	412	1,045	2
GERMANY	294	672	3
UNITED KINGDOM	143	416	4
FRANCE	135	399	5
NETHERLANDS	83	187	6
BELGIUM	68	170	7
SWITZERLAND	61	134	8
AUSTRALIA	43	93	
CZECH REPUBLIC	40	110	
SPAIN	40	96	
DENMARK	33	91	
ITALY	28	70	
SWEDEN	25	64	
AUSTRIA	24	43	
ISRAEL	23	56	
POLAND	14	32	
NEW ZEALAND	10	23	
JAPAN	8	19	
IRELAND	8	19	
NORWAY	7	10	
LATVIA	5	16	
SLOVENIA	4	8	
FINLAND	3	6	
BRAZIL	3	6	
SOUTH AFRICA	3	6	
MEXICO	3	7	
SLOVAKIA	3	9	
ESTONIA	3	9	
CAYMAN ISLANDS	3	8	
HUNGARY	2	5	
RUSSIA	2	4	
BERMUDA	1	7	
GUATEMALA	1	3	
PUERTO RICO	1	2	
CHINA	1	2	
LITHUANIA	1	2	
COLUMBIA	1	2	
ARGENTINA	1	1	
CROATIA	1	2	

2009 USA Backcountry Use by State



State	Permits	People	Rank
AZ	3,672	13,174	1
CA	1,424	4,616	2
CO	528	1,588	3
TX	402	1,199	4
IL	266	826	5
WA	239	682	6
NY	234	700	7
NM	223	819	8
PA	207	602	
FL	204	576	
UT	185	707	
OH	184	537	
MI	175	554	
MA	166	441	
NV	163	480	
VA	150	444	
WI	141	453	
MD	139	457	
OR	139	401	
MN	135	386	
MO	134	400	
IN	120	389	
NJ	115	365	
NC	112	317	
GA	109	312	
TN	90	268	
AK	79	219	
CT	68	180	
OK	68	247	
WY	66	194	
KS	64	222	
IA	56	186	
MT	55	154	
KY	55	188	
NH	49	147	
ID	46	141	
LA	42	115	
AR	41	145	
SC	37	102	
AL	36	89	
VT	35	112	
DC	30	94	
ME	29	64	
NE	26	77	
MS	23	86	
RI	16	62	
HI	13	26	
DE	12	32	
WV	10	34	
ND	9	22	
SD	8	18	
PR	1	2	

Backcountry Permits in 2009

for
**Grand Canyon Field Institute (GCFI),
Boy Scouts (BSA), and
Commercial Use Authorization Permit Holders (CUAs)**

Permits

13,616 Backcountry Permits were issued.

12,191 of total issued permits were actually used.

66 (0.54%) were for BSA trips.

32 (0.26%) were for GCFI trips.

479 (3.93%) were for CUA trips.

1,423 of total issued permits were cancelled before use.

13 were for BSA trips (**16.46%** Average Cancellation Rate).

13 were for GCFI trips (**28.89%** Average Cancellation Rate).

84 were for CUA trips (**14.92%** Average Cancellation Rate).

Participants

38,574 People participated in these trips.

571 (1.48%) of these were on BSA trips.

264 (0.68%) of these were on GCFI trips.

2,362 (6.12%) of these were on CUA trips.

User-Nights

92,857 User-Nights were spent in the canyon on Backcountry Permits.

1,229 (1.32%) of these were from BSA trips.

899 (0.97%) of these were from GCFI trips.

6,402 (6.89%) of these were from CUA trips.

Permits Obtained on Earliest Date Possible (1st of month 4 months in advance).

837 (6.15%) Permits (**154** were large group permits).

13 (1.55%) of these were for BSA trips. (**10** were large group permits).

297 (35.48%) of these were for CUA trips (**37** were large group permits).

114 (13.62%) of these were cancelled before use (**16** were large group permits).

2 of these were for BSA trips (**1** were large group permits).

45 of these were for CUA trips (**5** were large group permits)

Backcountry Use Summary

Permit	Permits are issued for groups of 1 to 11 people for one or more nights.
User-Night	Each individual person in the canyon for one night.
Group-Night	One group in the canyon for one night.
People	Each individual included on a permit (ignores how long in the canyon)
First-Night	Total groups camping in this area on the first night of their itinerary (helps indicate trail usage).
Last-Night	Total groups camping in this area on the last night of their itinerary (helps indicate trail usage).

Use Area	User-Nights	Group-Nights	People	Permits	First-Nights	Last-Nights
AA9	18	5	10	3	3	2
AB0	253	53	108	26	25	25
AB9	59	12	43	9	6	8
AC9	474	110	205	50	48	46
AD9	66	19	47	11	5	5
AE9	896	303	263	96	84	75
AF9	228	87	73	33	1	3
AG9	68	33	24	12	2	2
AH9	40	22	19	10	0	0
AJ9	94	34	65	24	6	5
AK9	1,806	631	975	346	113	96
AL9	12	5	7	3	3	3
AM9	582	139	431	103	38	52
AN9	34	10	29	8	6	4
AP9	461	171	202	79	39	33
AQ9	136	46	50	19	6	7
AR9	308	79	79	21	10	13
AS9	528	167	176	60	26	35
AT9	158	59	101	36	19	28
AU9	126	48	46	17	4	4
AV9	264	56	156	35	11	4
AW7	1,203	296	898	225	106	32
AW8	514	119	443	103	6	4
AX7	1,175	268	888	202	34	34
AY9	1,275	303	913	225	103	193
AZ9	223	47	140	30	8	7
BA9	961	355	480	184	57	38
BB9	1,966	604	1,135	372	280	226
BC9	1,060	369	697	247	43	27
BD9	1,587	448	1,248	364	180	142
BE9	1,491	466	1,247	392	131	165
BF5	2,007	572	1,616	466	287	370
BG9	1,374	406	1,134	342	181	133
BH9	841	292	737	254	55	28
BJ9	1,462	480	1,250	424	194	223
BL4	718	242	707	237	71	134

BL5	385	145	367	139	27	41
BL6	183	74	173	69	24	19
BL7	2,391	694	1,980	579	258	202
BL8	845	260	746	231	71	58
BM7	2,780	820	2,224	655	397	395
BM8	1,154	312	1,041	281	151	93
BN9	1,527	463	920	299	164	136
BO9	287	113	193	71	5	5
BP9	360	121	202	70	12	11
BQ9	850	255	532	155	64	106
BR9	1,339	336	407	107	57	32
BS9	12	7	3	2	0	1
BT9	29	5	19	4	3	3
BU9	2	1	2	1	1	1
CBG	30,050	9,172	22,337	6,938	5,630	4,061
CCG	7,069	2,214	5,609	1,708	1,118	755
CIG	14,456	4,282	12,984	3,828	1,311	3,459
LA9	726	171	231	57	36	33
LB9	273	76	101	26	18	18
LC9	169	37	49	12	8	11
LE9	8	2	4	1	1	0
LF9	16	4	4	1	0	1
LJ9	10	2	5	1	1	1
LK9	14	7	4	2	1	1
LL9	15	5	3	1	1	1
LM9	1	1	1	1	1	1
NA0	56	26	40	20	14	17
NA1	202	98	176	86	76	78
NB9	39	13	34	12	11	9
NC9	67	29	49	22	20	15
NCG	48	19	41	17	3	0
ND9	14	9	14	9	6	4
NF9	232	104	214	96	89	77
NG9	46	23	38	16	13	15
NH1	353	120	249	88	81	78
NJ0	99	28	54	19	14	8
NJ1	52	22	36	16	15	15
NJ2	186	70	146	53	44	25
NK9	75	25	43	14	11	9
NL9	49	18	31	11	8	7
NM9	4	3	3	2	2	1
NN9	23	9	17	6	5	6
NRH	71	18	28	8	8	6
NRR	1	1	1	1	0	0
NTL	23	10	13	4	1	1
SA9	78	32	32	15	14	14
SB9	11	6	7	4	3	4
SC9	43	20	18	9	8	7
SE0	127	18	54	9	7	5
SE1	38	12	32	9	7	3
SE2	66	23	54	19	16	11
SE3	206	61	176	53	45	20
SF9	37	10	22	5	4	4
SG9	36	10	19	6	6	5
SI9	46	9	30	6	6	6
SRH	214	176	55	40	36	36
TOR	4	1	4	1	0	1
USF	112	27	94	21	15	5
Year Total:	92,077	27,985	68,607	21,004	12,139	12,143

Backcountry Use Details by Use Area then Month

Month	User-Nights	Group-Nights	People	Permits	First-Nights	Last-Nights
AA9						
3	12	3	4	1	1	1
10	6	2	6	2	2	1
	18	5	10	3	3	2
AB0						
2	2	1	2	1	1	0
3	74	20	28	8	8	8
4	8	2	4	1	1	1
5	14	5	8	3	3	3
7	1	1	1	1	1	1
9	21	3	13	2	1	2
10	129	19	48	8	8	8
11	4	2	4	2	2	2
	253	53	108	26	25	25
AB9						
2	4	2	4	2	0	2
3	11	1	11	1	1	1
5	12	2	6	1	1	1
6	2	1	2	1	1	1
9	10	2	5	1	1	1
10	11	3	6	2	1	1
11	9	1	9	1	1	1
	59	12	43	9	6	8
AC9						
2	10	5	4	2	2	1
3	112	24	44	9	8	9
4	61	17	26	7	7	6
5	54	8	24	4	4	4
6	18	6	10	4	4	4
7	2	1	2	1	1	1
8	8	2	4	1	1	1
9	32	6	16	3	3	2
10	38	13	17	6	5	5
11	130	25	51	11	11	11
12	9	3	7	2	2	2
	474	110	205	50	48	46
AD9						
2	14	2	14	2	1	2
3	1	1	1	1	0	0
4	19	9	10	4	3	2
5	16	2	8	1	1	0
6	8	1	8	1	0	1
9	5	1	5	1	0	0
10	3	3	1	1	0	0
	66	19	47	11	5	5

Month	User-Nights	Group-Nights	People	Permits	First-Nights	Last-Nights
AE9						
1	14	4	7	2	1	1
3	42	22	12	7	7	5
4	231	69	57	17	16	15
5	191	66	70	25	23	19
6	80	17	19	6	4	6
9	50	20	16	6	6	3
10	238	80	66	25	21	20
11	50	25	16	8	6	6
	896	303	263	96	84	75

AF9						
1	12	4	9	3	0	0
2	7	4	3	2	0	0
3	9	6	3	2	0	0
4	50	20	12	5	0	1
5	37	8	13	4	0	0
9	9	5	4	2	0	0
10	71	28	20	11	1	2
11	33	12	9	4	0	0
	228	87	73	33	1	3

AG9						
1	14	7	2	1	0	0
2	2	2	1	1	0	0
3	7	5	3	2	0	1
4	19	7	5	2	0	0
10	14	6	7	3	2	1
11	12	6	6	3	0	0
	68	33	24	12	2	2

AH9						
1	6	3	2	1	0	0
2	8	5	3	2	0	0
3	6	3	2	1	0	0
4	4	2	2	1	0	0
10	7	4	3	2	0	0
11	7	4	5	2	0	0
12	2	1	2	1	0	0
	40	22	19	10	0	0

AJ9						
1	5	4	4	3	0	0
2	2	2	1	1	0	0
3	21	6	12	4	1	1
4	21	8	15	5	1	2
5	22	5	12	3	1	0
10	7	4	5	3	1	2
11	10	3	10	3	2	0
12	6	2	6	2	0	0
	94	34	65	24	6	5

AK9

Month	User-Nights	Group-Nights	People	Permits	First-Nights	Last-Nights
1	48	32	21	14	4	2
2	85	34	31	14	4	4
3	337	104	168	49	14	11
4	347	108	195	61	18	20
5	237	85	138	53	21	24
6	68	26	45	18	7	9
7	16	9	12	7	3	4
8	28	13	19	8	4	1
9	108	38	66	24	7	7
10	275	82	143	45	20	9
11	132	60	75	33	6	2
12	125	40	62	20	5	3
	1,806	631	975	346	113	96
AL9						
5	2	1	2	1	1	1
6	10	4	5	2	2	2
	12	5	7	3	3	3
AM9						
3	42	5	33	4	2	1
4	56	8	46	6	3	3
5	148	42	108	31	11	13
6	41	9	29	7	2	3
8	13	2	13	2	0	2
9	82	25	44	15	8	7
10	179	45	147	36	11	21
11	21	3	11	2	1	2
	582	139	431	103	38	52
AN9						
4	8	2	4	1	0	1
5	13	3	13	3	2	1
6	2	1	2	1	1	1
9	5	1	5	1	1	0
10	6	3	5	2	2	1
	34	10	29	8	6	4
AP9						
1	26	9	8	3	0	0
2	37	14	21	8	3	4
3	85	26	35	10	5	3
4	106	33	38	13	8	6
5	70	22	34	12	7	8
6	8	6	4	3	2	2
7	10	4	4	2	1	1
8	2	2	2	2	2	1
9	37	20	13	8	3	2
10	29	11	14	5	0	1
11	18	11	10	6	6	4
12	33	13	19	7	2	1
	461	171	202	79	39	33

Month	User-Nights	Group-Nights	People	Permits	First-Nights	Last-Nights
AQ9						
1	6	3	2	1	0	0
2	6	1	6	1	0	0
3	38	9	15	4	2	1
4	17	6	8	3	1	1
6	36	6	6	1	1	1
7	8	4	2	1	1	1
9	3	3	2	2	0	1
10	6	6	2	2	0	0
11	14	6	6	3	0	1
12	2	2	1	1	1	1
	136	46	50	19	6	7
AR9						
3	14	5	6	2	0	0
5	16	4	4	1	1	1
6	33	5	12	2	2	2
8	4	2	2	1	0	1
9	36	11	10	3	0	2
10	134	36	26	7	4	3
11	71	16	19	5	3	4
	308	79	79	21	10	13
AS9						
3	10	5	9	4	1	0
4	29	9	9	4	2	3
5	95	27	23	8	3	6
6	35	16	15	7	3	6
7	19	5	8	2	2	1
8	34	6	9	2	2	1
9	78	19	27	7	2	2
10	151	54	51	17	6	10
11	77	26	25	9	5	6
	528	167	176	60	26	35
AT9						
5	22	5	9	2	1	2
6	23	7	19	5	4	5
7	16	6	10	4	2	4
8	32	14	24	9	4	6
9	34	18	20	10	6	8
10	29	8	17	5	2	3
11	2	1	2	1	0	0
	158	59	101	36	19	28
AU9						
3	10	4	6	2	2	0
4	46	15	14	4	0	3
5	9	3	9	3	0	0
8	3	3	1	1	0	0
10	48	18	12	5	2	0
11	10	5	4	2	0	1

Month	User-Nights	Group-Nights	People	Permits	First-Nights	Last-Nights
	126	48	46	17	4	4
AV9						
4	59	6	29	3	2	0
5	32	7	32	7	2	1
6	54	13	31	7	2	2
8	2	1	2	1	0	0
9	21	8	13	5	2	0
10	90	18	45	10	3	1
11	6	3	4	2	0	0
	264	56	156	35	11	4
AW7						
3	49	8	35	6	2	0
4	123	27	99	22	10	1
5	280	68	210	52	20	9
6	187	38	124	28	15	6
7	21	5	18	4	3	2
8	28	8	26	7	5	2
9	155	44	120	34	15	2
10	313	79	231	58	29	9
11	47	19	35	14	7	1
	1,203	296	898	225	106	32
AW8						
3	29	3	20	2	0	0
4	53	11	51	10	0	0
5	154	34	136	29	0	2
6	41	11	32	8	0	0
7	2	1	2	1	0	0
8	22	2	11	1	0	0
9	67	17	63	16	1	0
10	135	35	117	31	5	2
11	11	5	11	5	0	0
	514	119	443	103	6	4
AX7						
3	60	10	45	7	2	2
4	156	35	120	26	1	7
5	268	59	188	43	8	5
6	158	33	122	25	4	6
7	40	7	21	4	2	2
8	40	8	24	6	2	0
9	139	39	112	30	5	5
10	258	60	213	48	7	4
11	56	17	43	13	3	3
	1,175	268	888	202	34	34
AY9						
3	25	5	25	5	2	3
4	177	38	120	25	18	20
5	328	74	231	54	26	49
6	130	34	87	23	11	21

Month	User-Nights	Group-Nights	People	Permits	First-Nights	Last-Nights
7	6	1	6	1	0	1
8	15	5	10	4	1	4
9	135	40	103	32	14	28
10	411	88	291	66	27	53
11	48	18	40	15	4	14
	1,275	303	913	225	103	193
AZ9						
3	4	2	2	1	1	1
4	49	11	35	8	2	1
5	38	10	26	7	2	1
6	10	1	10	1	0	0
9	20	4	20	4	1	0
10	98	18	43	8	2	4
11	4	1	4	1	0	0
	223	47	140	30	8	7
BA9						
1	20	8	13	5	1	0
2	13	7	7	4	1	1
3	116	50	62	27	6	8
4	233	71	107	35	11	8
5	154	59	85	33	7	1
6	27	10	20	7	3	1
8	1	1	1	1	1	1
9	31	21	16	10	3	2
10	171	61	76	28	10	8
11	165	51	73	24	12	6
12	30	16	20	10	2	2
	961	355	480	184	57	38
BB9						
1	70	17	44	12	7	5
2	93	29	49	16	12	10
3	304	93	160	55	44	26
4	364	112	229	73	53	43
5	328	104	182	62	51	43
6	43	17	31	12	8	11
7	1	1	1	1	1	1
9	86	36	53	19	12	13
10	384	94	209	57	45	33
11	241	73	146	48	33	30
12	52	28	31	17	14	11
	1,966	604	1,135	372	280	226
BC9						
1	80	18	46	12	2	0
2	68	16	38	9	1	1
3	172	58	111	38	8	2
4	233	77	158	53	8	7
5	115	47	80	31	3	5
6	22	9	15	7	2	0
7	2	1	2	1	1	1
8	3	1	3	1	1	0

Month	User-Nights	Group-Nights	People	Permits	First-Nights	Last-Nights
9	38	19	22	10	4	0
10	149	55	108	39	6	5
11	92	42	71	30	6	6
12	86	26	43	16	1	0
	1,060	369	697	247	43	27

BD9

1	69	13	47	11	2	3
2	80	17	51	12	5	5
3	253	70	200	56	28	20
4	318	86	270	71	39	24
5	254	72	167	52	29	25
6	36	15	32	13	7	6
7	26	7	24	6	5	3
8	19	8	18	7	4	5
9	57	14	51	13	8	2
10	270	77	208	62	28	24
11	156	57	138	50	22	23
12	49	12	42	11	3	2
	1,587	448	1,248	364	180	142

BE9

1	60	15	47	12	4	2
2	44	14	39	11	4	3
3	227	77	183	62	26	23
4	339	89	282	78	25	34
5	238	70	205	60	20	29
6	55	22	47	20	10	12
7	22	6	22	6	2	4
8	9	4	9	4	2	1
9	88	29	75	23	9	4
10	245	72	197	60	13	27
11	128	54	109	44	15	21
12	36	14	32	12	1	5
	1,491	466	1,247	392	131	165

BF5

1	21	4	21	4	1	3
2	53	15	51	14	8	11
3	350	85	293	70	41	49
4	436	117	345	95	55	75
5	346	102	268	81	57	65
6	95	26	79	22	15	22
7	17	8	17	8	6	8
8	17	8	14	6	5	6
9	170	52	124	40	23	38
10	255	82	207	68	45	51
11	223	63	175	49	27	38
12	24	10	22	9	4	4
	2,007	572	1,616	466	287	370

BG9

1	29	10	29	10	4	4
2	65	17	37	11	6	4

Month	User-Nights	Group-Nights	People	Permits	First-Nights	Last-Nights
3	306	84	251	69	31	28
4	427	111	343	92	49	36
5	194	68	172	59	31	31
6	19	5	13	4	4	0
7	8	4	6	3	3	1
8	2	1	2	1	0	0
9	62	16	46	13	11	1
10	128	37	111	33	15	13
11	126	47	116	41	24	14
12	8	6	8	6	3	1
	1,374	406	1,134	342	181	133

BH9

1	44	17	41	15	3	0
2	87	25	51	15	0	0
3	190	58	173	50	8	2
4	240	72	213	62	12	9
5	58	25	51	22	6	3
6	5	3	5	3	0	0
7	4	2	2	1	1	1
8	2	1	2	1	1	0
9	26	9	20	8	1	3
10	92	31	92	31	11	5
11	58	30	57	29	8	3
12	35	19	30	17	4	2
	841	292	737	254	55	28

BJ9

1	60	26	52	21	6	14
2	91	24	62	18	9	5
3	313	81	247	66	28	31
4	291	85	258	77	30	38
5	180	64	160	59	35	38
6	36	17	32	15	9	9
7	3	2	3	2	2	1
8	4	2	4	2	0	1
9	79	29	75	28	16	13
10	219	67	183	59	33	34
11	125	53	116	49	14	28
12	61	30	58	28	12	11
	1,462	480	1,250	424	194	223

BL4

1	53	18	52	17	4	7
2	30	9	30	9	1	7
3	88	31	86	30	8	15
4	110	29	110	29	9	17
5	91	28	85	27	5	18
6	62	21	62	21	9	16
7	8	4	8	4	2	4
8	22	8	22	8	5	5
9	55	23	54	22	7	12
10	84	30	84	30	11	14
11	74	25	74	25	6	15

Month	User-Nights	Group-Nights	People	Permits	First-Nights	Last-Nights
12	41	16	40	15	4	4
	718	242	707	237	71	134
BL5						
1	16	8	16	8	1	0
2	16	6	16	6	0	0
3	61	19	61	19	3	6
4	82	26	77	25	3	7
5	52	23	52	23	10	14
6	15	5	15	5	1	1
7	2	1	2	1	0	0
8	1	1	1	1	1	0
9	27	10	25	9	2	3
10	46	21	45	20	2	4
11	38	14	38	14	3	5
12	29	11	19	8	1	1
	385	145	367	139	27	41
BL6						
1	3	2	3	2	0	1
2	7	4	7	4	2	1
3	32	14	32	14	5	3
4	29	13	23	10	5	5
5	43	13	41	12	5	6
6	7	3	5	2	1	1
7	3	1	3	1	1	0
9	6	2	6	2	1	0
10	20	8	20	8	1	1
11	16	7	16	7	3	1
12	17	7	17	7	0	0
	183	74	173	69	24	19
BL7						
1	85	25	76	21	8	2
2	85	30	71	26	12	6
3	401	107	324	87	37	30
4	418	116	361	101	35	41
5	379	109	317	89	51	38
6	102	27	92	24	13	8
7	18	5	18	5	2	2
8	37	14	29	11	0	3
9	150	47	126	43	22	11
10	344	102	262	77	38	28
11	304	87	248	73	34	25
12	68	25	56	22	6	8
	2,391	694	1,980	579	258	202
BL8						
1	50	12	39	11	1	4
2	17	10	14	8	3	0
3	161	50	148	45	11	13
4	198	64	167	53	21	15
5	159	39	137	35	15	12
6	22	4	22	4	0	0

Month	User-Nights	Group-Nights	People	Permits	First-Nights	Last-Nights
7	5	3	5	3	1	1
8	3	2	3	2	0	1
9	43	15	41	14	5	2
10	96	32	83	28	7	3
11	67	20	63	19	7	4
12	24	9	24	9	0	3
	845	260	746	231	71	58

BM7

1	81	27	63	21	10	13
2	84	37	71	29	18	21
3	441	116	357	98	54	55
4	434	117	377	101	60	47
5	440	122	331	91	56	64
6	235	69	170	48	31	35
7	26	11	20	9	7	6
8	53	20	40	15	9	11
9	245	74	192	57	33	42
10	385	110	295	86	55	53
11	280	85	236	70	43	37
12	76	32	72	30	21	11
	2,780	820	2,224	655	397	395

BM8

1	40	10	34	9	3	3
2	18	8	15	7	3	1
3	170	48	146	41	22	16
4	241	55	204	47	25	13
5	178	50	159	44	25	16
6	71	16	69	15	7	5
7	17	5	17	5	3	2
8	29	9	22	7	6	3
9	113	28	104	26	19	6
10	142	40	138	39	20	15
11	119	37	117	35	15	12
12	16	6	16	6	3	1
	1,154	312	1,041	281	151	93

BN9

1	35	12	32	10	7	1
2	40	21	28	15	7	3
3	302	78	176	49	30	23
4	377	91	203	53	26	27
5	192	67	115	39	22	18
6	56	18	32	11	6	6
7	15	7	11	5	3	4
8	13	6	8	4	3	2
9	58	22	40	16	10	10
10	255	71	149	45	27	19
11	147	51	98	38	20	17
12	37	19	28	14	3	6
	1,527	463	920	299	164	136

BO9

Month	User-Nights	Group-Nights	People	Permits	First-Nights	Last-Nights
1	7	7	3	3	0	0
2	11	7	6	4	0	0
3	88	34	68	21	2	3
4	103	34	64	21	2	1
5	41	14	24	9	0	0
6	13	3	7	2	0	0
8	2	1	2	1	0	0
10	12	5	12	5	0	0
11	7	6	4	3	0	1
12	3	2	3	2	1	0
	287	113	193	71	5	5

BP9

1	6	6	3	3	0	0
2	4	3	4	3	0	0
3	109	35	68	21	4	5
4	116	38	65	19	6	3
5	25	12	16	7	0	1
6	1	1	1	1	0	0
8	5	2	5	2	1	0
9	64	11	16	3	0	0
10	17	8	17	8	1	1
11	8	2	4	1	0	0
12	5	3	3	2	0	1
	360	121	202	70	12	11

BQ9

1	6	5	4	3	0	1
2	52	12	26	7	4	3
3	139	44	100	29	11	19
4	218	53	136	31	13	18
5	110	40	63	20	5	15
6	3	3	2	2	2	0
7	8	3	8	3	2	3
8	3	1	3	1	0	0
9	94	22	47	11	7	8
10	89	36	64	25	10	20
11	120	33	71	20	10	16
12	8	3	8	3	0	3
	850	255	532	155	64	106

BR9

1	10	5	2	1	1	0
2	45	9	15	3	1	0
3	238	56	72	18	12	2
4	391	67	111	20	9	6
5	133	54	45	17	10	5
6	9	3	3	1	1	0
7	3	1	3	1	0	1
8	3	1	3	1	0	1
9	43	12	19	6	1	1
10	215	62	64	19	10	8
11	220	57	62	17	10	8
12	29	9	8	3	2	0

Month	User-Nights	Group-Nights	People	Permits	First-Nights	Last-Nights
	1,339	336	407	107	57	32
BS9						
3	12	7	3	2	0	1
	12	7	3	2	0	1
BT9						
3	1	1	1	1	0	1
10	2	1	2	1	1	1
11	20	2	10	1	1	1
12	6	1	6	1	1	0
	29	5	19	4	3	3
BU9						
10	2	1	2	1	1	1
	2	1	2	1	1	1
CBG						
1	977	369	634	247	210	172
2	1,122	403	758	273	240	156
3	3,177	936	2,160	648	567	376
4	3,260	898	2,339	664	569	379
5	3,344	912	2,455	681	517	332
6	3,144	920	2,479	734	568	420
7	2,260	760	2,006	666	554	447
8	2,232	754	1,934	652	553	457
9	3,007	915	2,408	748	548	420
10	3,305	917	2,328	673	485	341
11	2,707	867	1,842	602	505	348
12	1,515	521	994	350	314	213
	30,050	9,172	22,337	6,938	5,630	4,061
CCG						
1	68	35	49	21	3	1
2	74	29	49	21	4	0
3	400	111	256	74	29	30
4	401	135	275	94	45	28
5	1,014	274	840	216	146	88
6	1,047	311	849	247	169	127
7	740	245	600	191	134	112
8	681	244	529	188	136	105
9	1,003	308	885	263	211	108
10	1,092	322	919	257	185	112
11	426	154	269	104	53	42
12	123	46	89	32	3	2
	7,069	2,214	5,609	1,708	1,118	755
CIG						
1	413	150	347	129	43	114
2	479	165	414	141	43	129
3	1,550	452	1,367	395	141	348
4	1,627	440	1,439	392	104	358
5	1,693	464	1,566	425	124	372

Month	User-Nights	Group-Nights	People	Permits	First-Nights	Last-Nights
6	1,606	447	1,446	402	155	365
7	1,086	342	964	303	142	283
8	1,109	347	967	303	155	280
9	1,482	442	1,401	413	147	380
10	1,612	442	1,460	396	107	362
11	1,303	407	1,149	360	103	329
12	496	184	464	169	47	139
	14,456	4,282	12,984	3,828	1,311	3,459

LA9

2	24	4	6	1	1	1
3	45	12	17	5	4	3
4	172	46	60	16	11	7
5	80	28	26	11	6	5
6	59	10	17	3	0	3
9	68	14	24	5	2	3
10	256	49	75	14	11	9
11	22	8	6	2	1	2
	726	171	231	57	36	33

LB9

2	55	5	22	2	1	1
3	45	17	13	4	4	3
4	71	30	20	9	5	7
5	7	5	3	2	1	2
9	15	3	5	1	1	0
10	73	14	31	6	4	3
11	7	2	7	2	2	2
	273	76	101	26	18	18

LC9

2	54	9	13	2	2	2
4	35	14	12	5	3	4
9	15	3	5	1	0	1
10	8	2	4	1	0	1
11	53	7	13	2	2	2
12	4	2	2	1	1	1
	169	37	49	12	8	11

LE9

10	8	2	4	1	1	0
	8	2	4	1	1	0

LF9

10	16	4	4	1	0	1
	16	4	4	1	0	1

LJ9

11	10	2	5	1	1	1
	10	2	5	1	1	1

LK9

Month	User-Nights	Group-Nights	People	Permits	First-Nights	Last-Nights
4	10	5	2	1	1	0
5	4	2	2	1	0	1
	14	7	4	2	1	1
LL9						
2	15	5	3	1	1	1
	15	5	3	1	1	1
LM9						
4	1	1	1	1	1	1
	1	1	1	1	1	1
NA0						
5	26	11	17	7	5	6
6	17	6	10	4	2	4
7	5	4	5	4	2	4
8	1	1	1	1	1	1
9	3	2	3	2	2	2
10	4	2	4	2	2	0
	56	26	40	20	14	17
NA1						
5	24	9	18	7	6	7
6	44	18	36	15	13	12
7	47	25	45	24	23	21
8	25	14	23	13	11	13
9	40	21	34	17	14	16
10	22	11	20	10	9	9
	202	98	176	86	76	78
NB9						
5	2	1	2	1	0	1
6	18	5	18	5	5	3
7	16	5	11	4	4	3
8	2	1	2	1	1	1
9	1	1	1	1	1	1
	39	13	34	12	11	9
NC9						
5	20	6	10	3	2	2
6	19	9	12	6	6	5
7	10	5	10	5	4	5
8	6	3	6	3	3	1
9	10	4	10	4	4	1
11	2	2	1	1	1	1
	67	29	49	22	20	15
NCG						
1	3	3	2	2	0	0
2	7	3	7	3	2	0
3	23	4	17	3	1	0
4	5	2	5	2	0	0

Month	User-Nights	Group-Nights	People	Permits	First-Nights	Last-Nights
5	2	2	2	2	0	0
11	5	3	5	3	0	0
12	3	2	3	2	0	0
	48	19	41	17	3	0
ND9						
1	2	1	2	1	1	0
4	1	1	1	1	1	0
6	2	1	2	1	0	0
7	3	2	3	2	2	1
9	3	2	3	2	2	2
10	3	2	3	2	0	1
	14	9	14	9	6	4
NF9						
5	52	21	48	20	19	16
6	44	20	44	20	20	15
7	33	14	33	14	12	12
8	52	23	46	20	19	16
9	17	11	17	11	8	9
10	34	15	26	11	11	9
	232	104	214	96	89	77
NG9						
5	9	6	6	3	2	2
6	7	2	7	2	2	2
7	4	2	4	2	2	2
8	10	5	8	4	4	4
9	4	4	2	2	2	2
10	12	4	11	3	1	3
	46	23	38	16	13	15
NH1						
5	2	1	2	1	1	0
6	78	26	59	19	18	18
7	89	27	57	19	16	17
8	61	21	51	18	16	17
9	55	28	38	19	19	15
10	54	14	34	10	9	9
11	14	3	8	2	2	2
	353	120	249	88	81	78
NJ0						
5	3	2	3	2	0	0
6	12	4	8	3	2	2
7	46	5	13	2	2	1
8	9	5	7	4	4	2
9	16	8	10	4	2	3
10	10	3	10	3	3	0
11	3	1	3	1	1	0
	99	28	54	19	14	8

NJ1

Month	User-Nights	Group-Nights	People	Permits	First-Nights	Last-Nights
5	21	7	11	4	4	4
6	14	6	12	5	4	5
7	12	6	8	4	4	3
8	2	1	2	1	1	1
9	1	1	1	1	1	1
10	2	1	2	1	1	1
	52	22	36	16	15	15
NJ2						
5	8	3	8	3	2	0
6	35	12	30	11	11	7
7	17	5	14	4	3	2
8	39	14	31	10	8	6
9	54	20	38	14	12	5
10	26	12	20	8	6	4
11	7	4	5	3	2	1
	186	70	146	53	44	25
NK9						
3	16	3	10	2	0	2
4	21	7	9	3	3	1
6	14	4	8	2	2	1
7	5	2	5	2	2	2
8	4	3	3	2	1	2
9	4	1	4	1	1	0
10	9	3	3	1	1	1
11	2	2	1	1	1	0
	75	25	43	14	11	9
NL9						
2	2	1	2	1	1	1
3	8	2	4	1	1	0
4	7	3	4	2	1	1
5	6	3	4	2	1	1
8	2	2	1	1	1	0
10	20	3	14	2	2	2
11	2	2	1	1	0	1
12	2	2	1	1	1	1
	49	18	31	11	8	7
NM9						
5	2	1	2	1	1	0
11	2	2	1	1	1	1
	4	3	3	2	2	1
NN9						
4	3	1	3	1	1	1
5	4	2	2	1	1	1
6	2	1	2	1	1	1
9	2	1	2	1	0	1
10	6	1	6	1	1	1
11	6	3	2	1	1	1

Month	User-Nights	Group-Nights	People	Permits	First-Nights	Last-Nights
	23	9	17	6	5	6
NRH						
5	11	4	5	2	2	2
6	9	3	3	1	1	1
9	41	7	15	3	3	2
10	10	4	5	2	2	1
	71	18	28	8	8	6
NRR						
3	1	1	1	1	0	0
	1	1	1	1	0	0
NTL						
4	3	1	3	1	1	0
11	14	3	9	2	0	1
12	6	6	1	1	0	0
	23	10	13	4	1	1
SA9						
3	6	3	2	1	0	0
4	19	8	8	4	4	4
5	33	8	11	3	3	3
6	4	2	2	1	1	1
9	10	6	4	2	2	2
10	6	5	5	4	4	4
	78	32	32	15	14	14
SB9						
2	4	2	2	1	1	1
3	4	2	2	1	1	1
4	1	1	1	1	0	1
9	2	1	2	1	1	1
	11	6	7	4	3	4
SC9						
3	20	7	7	3	3	2
5	1	1	1	1	0	1
6	14	7	4	2	2	2
10	3	3	1	1	1	1
11	2	1	2	1	1	1
12	3	1	3	1	1	0
	43	20	18	9	8	7
SE0						
4	35	6	30	5	4	2
6	85	10	17	2	2	2
10	7	2	7	2	1	1
	127	18	54	9	7	5
SE1						

Month	User-Nights	Group-Nights	People	Permits	First-Nights	Last-Nights
2	6	1	6	1	1	0
3	7	3	5	2	1	1
4	4	1	4	1	1	0
5	9	5	5	3	3	1
6	6	1	6	1	1	0
7	6	1	6	1	0	1
	38	12	32	9	7	3
SE2						
3	5	2	5	2	2	1
4	8	2	8	2	1	2
5	5	3	5	3	1	2
6	19	5	12	3	3	2
7	6	1	6	1	1	1
8	4	2	4	2	2	1
9	8	3	6	2	2	1
10	8	4	5	3	3	0
11	3	1	3	1	1	1
	66	23	54	19	16	11
SE3						
3	25	10	23	9	8	1
4	57	13	42	10	7	4
5	34	11	32	10	10	2
6	9	3	9	3	1	3
8	1	1	1	1	1	0
9	24	9	20	8	7	5
10	30	8	30	8	7	3
11	26	6	19	4	4	2
	206	61	176	53	45	20
SF9						
2	8	1	8	1	1	0
4	8	2	4	1	0	1
6	3	3	1	1	1	1
10	18	4	9	2	2	2
	37	10	22	5	4	4
SG9						
3	18	2	9	1	1	1
4	12	4	6	2	2	1
10	4	2	2	1	1	1
11	2	2	2	2	2	2
	36	10	19	6	6	5
SI9						
2	8	1	8	1	1	1
4	18	3	10	2	2	2
5	10	2	5	1	1	1
10	6	2	3	1	1	1
11	4	1	4	1	1	1
	46	9	30	6	6	6

Month	User-Nights	Group-Nights	People	Permits	First-Nights	Last-Nights
SRH						
1	9	9	3	3	3	2
2	12	12	2	2	1	2
3	19	19	3	3	3	3
4	27	24	7	6	6	6
5	15	15	3	3	3	3
6	14	14	4	4	4	3
7	18	18	3	3	2	3
8	28	21	4	3	3	3
9	43	21	18	7	6	5
10	17	17	4	4	3	4
11	12	6	4	2	2	2
	214	176	55	40	36	36
TOR						
10	4	1	4	1	0	1
	4	1	4	1	0	1
USF						
3	13	2	13	2	2	0
4	16	3	9	2	2	1
5	36	12	26	8	4	3
6	12	3	12	3	2	1
9	15	2	15	2	2	0
10	18	3	18	3	3	0
12	2	2	1	1	0	0
	112	27	94	21	15	5

Key

- Permit** Permits are issued for groups of 1 to 11 people for one or more nights.
- User-Night** Each individual person in the canyon for one night.
- Group-Night** One group in the canyon for one night.
- People** Each individual included on a permit (ignores how long in the canyon)
- First-Night** Total groups camping in this area on the first night of their itinerary (helps indicate trail usage).
- Last-Night** Total groups camping in this area on the last night of their itinerary (helps indicate trail usage).

Backcountry Use Details by Month then Use Area

Month	Use Area	User-Nights	Group-Nights	People	Permits	First-Nights	Last-Nights
1	AE9	14	4	7	2	1	1
	AF9	12	4	9	3	0	0
	AG9	14	7	2	1	0	0
	AH9	6	3	2	1	0	0
	AJ9	5	4	4	3	0	0
	AK9	48	32	21	14	4	2
	AP9	26	9	8	3	0	0
	AQ9	6	3	2	1	0	0
	BA9	20	8	13	5	1	0
	BB9	70	17	44	12	7	5
	BC9	80	18	46	12	2	0
	BD9	69	13	47	11	2	3
	BE9	60	15	47	12	4	2
	BF5	21	4	21	4	1	3
	BG9	29	10	29	10	4	4
	BH9	44	17	41	15	3	0
	BJ9	60	26	52	21	6	14
	BL4	53	18	52	17	4	7
	BL5	16	8	16	8	1	0
	BL6	3	2	3	2	0	1
	BL7	85	25	76	21	8	2
	BL8	50	12	39	11	1	4
	BM7	81	27	63	21	10	13
	BM8	40	10	34	9	3	3
	BN9	35	12	32	10	7	1
	BO9	7	7	3	3	0	0
	BP9	6	6	3	3	0	0
	BQ9	6	5	4	3	0	1
	BR9	10	5	2	1	1	0
	CBG	977	369	634	247	210	172
	CCG	68	35	49	21	3	1
	CIG	413	150	347	129	43	114
NCG	3	3	2	2	0	0	
ND9	2	1	2	1	1	0	
SRH	9	9	3	3	3	2	
		2,448	898	1,759	642	330	355
2	AB0	2	1	2	1	1	0
	AB9	4	2	4	2	0	2
	AC9	10	5	4	2	2	1
	AD9	14	2	14	2	1	2
	AF9	7	4	3	2	0	0
	AG9	2	2	1	1	0	0
	AH9	8	5	3	2	0	0
	AJ9	2	2	1	1	0	0
	AK9	85	34	31	14	4	4
	AP9	37	14	21	8	3	4
	AQ9	6	1	6	1	0	0
	BA9	13	7	7	4	1	1
	BB9	93	29	49	16	12	10
	BC9	68	16	38	9	1	1
BD9	80	17	51	12	5	5	

Month	Use Area	User-Nights	Group-Nights	People	Permits	First-Nights	Last-Nights
	BE9	44	14	39	11	4	3
	BF5	53	15	51	14	8	11
	BG9	65	17	37	11	6	4
	BH9	87	25	51	15	0	0
	BJ9	91	24	62	18	9	5
	BL4	30	9	30	9	1	7
	BL5	16	6	16	6	0	0
	BL6	7	4	7	4	2	1
	BL7	85	30	71	26	12	6
	BL8	17	10	14	8	3	0
	BM7	84	37	71	29	18	21
	BM8	18	8	15	7	3	1
	BN9	40	21	28	15	7	3
	BO9	11	7	6	4	0	0
	BP9	4	3	4	3	0	0
	BQ9	52	12	26	7	4	3
	BR9	45	9	15	3	1	0
	CBG	1,122	403	758	273	240	156
	CCG	74	29	49	21	4	0
	CIG	479	165	414	141	43	129
	LA9	24	4	6	1	1	1
	LB9	55	5	22	2	1	1
	LC9	54	9	13	2	2	2
	LL9	15	5	3	1	1	1
	NCG	7	3	7	3	2	0
	NL9	2	1	2	1	1	1
	SB9	4	2	2	1	1	1
	SE1	6	1	6	1	1	0
	SF9	8	1	8	1	1	0
	SI9	8	1	8	1	1	1
	SRH	12	12	2	2	1	2
		3,050	1,033	2,078	718	408	390

3

	AA9	12	3	4	1	1	1
	AB0	74	20	28	8	8	8
	AB9	11	1	11	1	1	1
	AC9	112	24	44	9	8	9
	AD9	1	1	1	1	0	0
	AE9	42	22	12	7	7	5
	AF9	9	6	3	2	0	0
	AG9	7	5	3	2	0	1
	AH9	6	3	2	1	0	0
	AJ9	21	6	12	4	1	1
	AK9	337	104	168	49	14	11
	AM9	42	5	33	4	2	1
	AP9	85	26	35	10	5	3
	AQ9	38	9	15	4	2	1
	AR9	14	5	6	2	0	0
	AS9	10	5	9	4	1	0
	AU9	10	4	6	2	2	0
	AW7	49	8	35	6	2	0
	AW8	29	3	20	2	0	0
	AX7	60	10	45	7	2	2
	AY9	25	5	25	5	2	3
	AZ9	4	2	2	1	1	1

Month	Use Area	User-Nights	Group-Nights	People	Permits	First-Nights	Last-Nights
	BA9	116	50	62	27	6	8
	BB9	304	93	160	55	44	26
	BC9	172	58	111	38	8	2
	BD9	253	70	200	56	28	20
	BE9	227	77	183	62	26	23
	BF5	350	85	293	70	41	49
	BG9	306	84	251	69	31	28
	BH9	190	58	173	50	8	2
	BJ9	313	81	247	66	28	31
	BL4	88	31	86	30	8	15
	BL5	61	19	61	19	3	6
	BL6	32	14	32	14	5	3
	BL7	401	107	324	87	37	30
	BL8	161	50	148	45	11	13
	BM7	441	116	357	98	54	55
	BM8	170	48	146	41	22	16
	BN9	302	78	176	49	30	23
	BO9	88	34	68	21	2	3
	BP9	109	35	68	21	4	5
	BQ9	139	44	100	29	11	19
	BR9	238	56	72	18	12	2
	BS9	12	7	3	2	0	1
	BT9	1	1	1	1	0	1
	CBG	3,177	936	2,160	648	567	376
	CCG	400	111	256	74	29	30
	CIG	1,550	452	1,367	395	141	348
	LA9	45	12	17	5	4	3
	LB9	45	17	13	4	4	3
	NCG	23	4	17	3	1	0
	NK9	16	3	10	2	0	2
	NL9	8	2	4	1	1	0
	NRR	1	1	1	1	0	0
	SA9	6	3	2	1	0	0
	SB9	4	2	2	1	1	1
	SC9	20	7	7	3	3	2
	SE1	7	3	5	2	1	1
	SE2	5	2	5	2	2	1
	SE3	25	10	23	9	8	1
	SG9	18	2	9	1	1	1
	SRH	19	19	3	3	3	3
	USF	13	2	13	2	2	0
		10,854	3,161	7,755	2,257	1,246	1,201

4

	AB0	8	2	4	1	1	1
	AC9	61	17	26	7	7	6
	AD9	19	9	10	4	3	2
	AE9	231	69	57	17	16	15
	AF9	50	20	12	5	0	1
	AG9	19	7	5	2	0	0
	AH9	4	2	2	1	0	0
	AJ9	21	8	15	5	1	2
	AK9	347	108	195	61	18	20
	AM9	56	8	46	6	3	3
	AN9	8	2	4	1	0	1
	AP9	106	33	38	13	8	6

Month	Use Area	User-Nights	Group-Nights	People	Permits	First-Nights	Last-Nights
	AQ9	17	6	8	3	1	1
	AS9	29	9	9	4	2	3
	AU9	46	15	14	4	0	3
	AV9	59	6	29	3	2	0
	AW7	123	27	99	22	10	1
	AW8	53	11	51	10	0	0
	AX7	156	35	120	26	1	7
	AY9	177	38	120	25	18	20
	AZ9	49	11	35	8	2	1
	BA9	233	71	107	35	11	8
	BB9	364	112	229	73	53	43
	BC9	233	77	158	53	8	7
	BD9	318	86	270	71	39	24
	BE9	339	89	282	78	25	34
	BF5	436	117	345	95	55	75
	BG9	427	111	343	92	49	36
	BH9	240	72	213	62	12	9
	BJ9	291	85	258	77	30	38
	BL4	110	29	110	29	9	17
	BL5	82	26	77	25	3	7
	BL6	29	13	23	10	5	5
	BL7	418	116	361	101	35	41
	BL8	198	64	167	53	21	15
	BM7	434	117	377	101	60	47
	BM8	241	55	204	47	25	13
	BN9	377	91	203	53	26	27
	BO9	103	34	64	21	2	1
	BP9	116	38	65	19	6	3
	BQ9	218	53	136	31	13	18
	BR9	391	67	111	20	9	6
	CBG	3,260	898	2,339	664	569	379
	CCG	401	135	275	94	45	28
	CIG	1,627	440	1,439	392	104	358
	LA9	172	46	60	16	11	7
	LB9	71	30	20	9	5	7
	LC9	35	14	12	5	3	4
	LK9	10	5	2	1	1	0
	LM9	1	1	1	1	1	1
	NCG	5	2	5	2	0	0
	ND9	1	1	1	1	1	0
	NK9	21	7	9	3	3	1
	NL9	7	3	4	2	1	1
	NN9	3	1	3	1	1	1
	NTL	3	1	3	1	1	0
	SA9	19	8	8	4	4	4
	SB9	1	1	1	1	0	1
	SE0	35	6	30	5	4	2
	SE1	4	1	4	1	1	0
	SE2	8	2	8	2	1	2
	SE3	57	13	42	10	7	4
	SF9	8	2	4	1	0	1
	SG9	12	4	6	2	2	1
	SI9	18	3	10	2	2	2
	SRH	27	24	7	6	6	6
	USF	16	3	9	2	2	1

Month	Use Area	User-Nights	Group-Nights	People	Permits	First-Nights	Last-Nights
		13,059	3,617	9,304	2,602	1,364	1,378
5	AB0	14	5	8	3	3	3
	AB9	12	2	6	1	1	1
	AC9	54	8	24	4	4	4
	AD9	16	2	8	1	1	0
	AE9	191	66	70	25	23	19
	AF9	37	8	13	4	0	0
	AJ9	22	5	12	3	1	0
	AK9	237	85	138	53	21	24
	AL9	2	1	2	1	1	1
	AM9	148	42	108	31	11	13
	AN9	13	3	13	3	2	1
	AP9	70	22	34	12	7	8
	AR9	16	4	4	1	1	1
	AS9	95	27	23	8	3	6
	AT9	22	5	9	2	1	2
	AU9	9	3	9	3	0	0
	AV9	32	7	32	7	2	1
	AW7	280	68	210	52	20	9
	AW8	154	34	136	29	0	2
	AX7	268	59	188	43	8	5
	AY9	328	74	231	54	26	49
	AZ9	38	10	26	7	2	1
	BA9	154	59	85	33	7	1
	BB9	328	104	182	62	51	43
	BC9	115	47	80	31	3	5
	BD9	254	72	167	52	29	25
	BE9	238	70	205	60	20	29
	BF5	346	102	268	81	57	65
	BG9	194	68	172	59	31	31
	BH9	58	25	51	22	6	3
	BJ9	180	64	160	59	35	38
	BL4	91	28	85	27	5	18
	BL5	52	23	52	23	10	14
	BL6	43	13	41	12	5	6
	BL7	379	109	317	89	51	38
	BL8	159	39	137	35	15	12
	BM7	440	122	331	91	56	64
	BM8	178	50	159	44	25	16
	BN9	192	67	115	39	22	18
	BO9	41	14	24	9	0	0
	BP9	25	12	16	7	0	1
	BQ9	110	40	63	20	5	15
	BR9	133	54	45	17	10	5
	CBG	3,344	912	2,455	681	517	332
	CCG	1,014	274	840	216	146	88
	CIG	1,693	464	1,566	425	124	372
	LA9	80	28	26	11	6	5
	LB9	7	5	3	2	1	2
	LK9	4	2	2	1	0	1
	NA0	26	11	17	7	5	6
	NA1	24	9	18	7	6	7
	NB9	2	1	2	1	0	1
	NC9	20	6	10	3	2	2

Month	Use Area	User-Nights	Group-Nights	People	Permits	First-Nights	Last-Nights
	NCG	2	2	2	2	0	0
	NF9	52	21	48	20	19	16
	NG9	9	6	6	3	2	2
	NH1	2	1	2	1	1	0
	NJ0	3	2	3	2	0	0
	NJ1	21	7	11	4	4	4
	NJ2	8	3	8	3	2	0
	NL9	6	3	4	2	1	1
	NM9	2	1	2	1	1	0
	NN9	4	2	2	1	1	1
	NRH	11	4	5	2	2	2
	SA9	33	8	11	3	3	3
	SC9	1	1	1	1	0	1
	SE1	9	5	5	3	3	1
	SE2	5	3	5	3	1	2
	SE3	34	11	32	10	10	2
	SI9	10	2	5	1	1	1
	SRH	15	15	3	3	3	3
	USF	36	12	26	8	4	3
		12,245	3,543	9,179	2,646	1,446	1,455

6

	AB9	2	1	2	1	1	1
	AC9	18	6	10	4	4	4
	AD9	8	1	8	1	0	1
	AE9	80	17	19	6	4	6
	AK9	68	26	45	18	7	9
	AL9	10	4	5	2	2	2
	AM9	41	9	29	7	2	3
	AN9	2	1	2	1	1	1
	AP9	8	6	4	3	2	2
	AQ9	36	6	6	1	1	1
	AR9	33	5	12	2	2	2
	AS9	35	16	15	7	3	6
	AT9	23	7	19	5	4	5
	AV9	54	13	31	7	2	2
	AW7	187	38	124	28	15	6
	AW8	41	11	32	8	0	0
	AX7	158	33	122	25	4	6
	AY9	130	34	87	23	11	21
	AZ9	10	1	10	1	0	0
	BA9	27	10	20	7	3	1
	BB9	43	17	31	12	8	11
	BC9	22	9	15	7	2	0
	BD9	36	15	32	13	7	6
	BE9	55	22	47	20	10	12
	BF5	95	26	79	22	15	22
	BG9	19	5	13	4	4	0
	BH9	5	3	5	3	0	0
	BJ9	36	17	32	15	9	9
	BL4	62	21	62	21	9	16
	BL5	15	5	15	5	1	1
	BL6	7	3	5	2	1	1
	BL7	102	27	92	24	13	8
	BL8	22	4	22	4	0	0
	BM7	235	69	170	48	31	35

Month	Use Area	User-Nights	Group-Nights	People	Permits	First-Nights	Last-Nights
	BM8	71	16	69	15	7	5
	BN9	56	18	32	11	6	6
	BO9	13	3	7	2	0	0
	BP9	1	1	1	1	0	0
	BQ9	3	3	2	2	2	0
	BR9	9	3	3	1	1	0
	CBG	3,144	920	2,479	734	568	420
	CCG	1,047	311	849	247	169	127
	CIG	1,606	447	1,446	402	155	365
	LA9	59	10	17	3	0	3
	NA0	17	6	10	4	2	4
	NA1	44	18	36	15	13	12
	NB9	18	5	18	5	5	3
	NC9	19	9	12	6	6	5
	ND9	2	1	2	1	0	0
	NF9	44	20	44	20	20	15
	NG9	7	2	7	2	2	2
	NH1	78	26	59	19	18	18
	NJ0	12	4	8	3	2	2
	NJ1	14	6	12	5	4	5
	NJ2	35	12	30	11	11	7
	NK9	14	4	8	2	2	1
	NN9	2	1	2	1	1	1
	NRH	9	3	3	1	1	1
	SA9	4	2	2	1	1	1
	SC9	14	7	4	2	2	2
	SE0	85	10	17	2	2	2
	SE1	6	1	6	1	1	0
	SE2	19	5	12	3	3	2
	SE3	9	3	9	3	1	3
	SF9	3	3	1	1	1	1
	SRH	14	14	4	4	4	3
	USF	12	3	12	3	2	1
		8,215	2,385	6,445	1,890	1,190	1,217

7

	AB0	1	1	1	1	1	1
	AC9	2	1	2	1	1	1
	AK9	16	9	12	7	3	4
	AP9	10	4	4	2	1	1
	AQ9	8	4	2	1	1	1
	AS9	19	5	8	2	2	1
	AT9	16	6	10	4	2	4
	AW7	21	5	18	4	3	2
	AW8	2	1	2	1	0	0
	AX7	40	7	21	4	2	2
	AY9	6	1	6	1	0	1
	BB9	1	1	1	1	1	1
	BC9	2	1	2	1	1	1
	BD9	26	7	24	6	5	3
	BE9	22	6	22	6	2	4
	BF5	17	8	17	8	6	8
	BG9	8	4	6	3	3	1
	BH9	4	2	2	1	1	1
	BJ9	3	2	3	2	2	1
	BL4	8	4	8	4	2	4

Month	Use Area	User-Nights	Group-Nights	People	Permits	First-Nights	Last-Nights
	BL5	2	1	2	1	0	0
	BL6	3	1	3	1	1	0
	BL7	18	5	18	5	2	2
	BL8	5	3	5	3	1	1
	BM7	26	11	20	9	7	6
	BM8	17	5	17	5	3	2
	BN9	15	7	11	5	3	4
	BQ9	8	3	8	3	2	3
	BR9	3	1	3	1	0	1
	CBG	2,260	760	2,006	666	554	447
	CCG	740	245	600	191	134	112
	CIG	1,086	342	964	303	142	283
	NA0	5	4	5	4	2	4
	NA1	47	25	45	24	23	21
	NB9	16	5	11	4	4	3
	NC9	10	5	10	5	4	5
	ND9	3	2	3	2	2	1
	NF9	33	14	33	14	12	12
	NG9	4	2	4	2	2	2
	NH1	89	27	57	19	16	17
	NJ0	46	5	13	2	2	1
	NJ1	12	6	8	4	4	3
	NJ2	17	5	14	4	3	2
	NK9	5	2	5	2	2	2
	SE1	6	1	6	1	0	1
	SE2	6	1	6	1	1	1
	SRH	18	18	3	3	2	3
		4,732	1,585	4,051	1,344	967	981

8

	AC9	8	2	4	1	1	1
	AK9	28	13	19	8	4	1
	AM9	13	2	13	2	0	2
	AP9	2	2	2	2	2	1
	AR9	4	2	2	1	0	1
	AS9	34	6	9	2	2	1
	AT9	32	14	24	9	4	6
	AU9	3	3	1	1	0	0
	AV9	2	1	2	1	0	0
	AW7	28	8	26	7	5	2
	AW8	22	2	11	1	0	0
	AX7	40	8	24	6	2	0
	AY9	15	5	10	4	1	4
	BA9	1	1	1	1	1	1
	BC9	3	1	3	1	1	0
	BD9	19	8	18	7	4	5
	BE9	9	4	9	4	2	1
	BF5	17	8	14	6	5	6
	BG9	2	1	2	1	0	0
	BH9	2	1	2	1	1	0
	BJ9	4	2	4	2	0	1
	BL4	22	8	22	8	5	5
	BL5	1	1	1	1	1	0
	BL7	37	14	29	11	0	3
	BL8	3	2	3	2	0	1
	BM7	53	20	40	15	9	11

Month	Use Area	User-Nights	Group-Nights	People	Permits	First-Nights	Last-Nights
	BM8	29	9	22	7	6	3
	BN9	13	6	8	4	3	2
	BO9	2	1	2	1	0	0
	BP9	5	2	5	2	1	0
	BQ9	3	1	3	1	0	0
	BR9	3	1	3	1	0	1
	CBG	2,232	754	1,934	652	553	457
	CCG	681	244	529	188	136	105
	CIG	1,109	347	967	303	155	280
	NA0	1	1	1	1	1	1
	NA1	25	14	23	13	11	13
	NB9	2	1	2	1	1	1
	NC9	6	3	6	3	3	1
	NF9	52	23	46	20	19	16
	NG9	10	5	8	4	4	4
	NH1	61	21	51	18	16	17
	NJ0	9	5	7	4	4	2
	NJ1	2	1	2	1	1	1
	NJ2	39	14	31	10	8	6
	NK9	4	3	3	2	1	2
	NL9	2	2	1	1	1	0
	SE2	4	2	4	2	2	1
	SE3	1	1	1	1	1	0
	SRH	28	21	4	3	3	3
		4,727	1,621	3,958	1,348	980	969

9

	AB0	21	3	13	2	1	2
	AB9	10	2	5	1	1	1
	AC9	32	6	16	3	3	2
	AD9	5	1	5	1	0	0
	AE9	50	20	16	6	6	3
	AF9	9	5	4	2	0	0
	AK9	108	38	66	24	7	7
	AM9	82	25	44	15	8	7
	AN9	5	1	5	1	1	0
	AP9	37	20	13	8	3	2
	AQ9	3	3	2	2	0	1
	AR9	36	11	10	3	0	2
	AS9	78	19	27	7	2	2
	AT9	34	18	20	10	6	8
	AV9	21	8	13	5	2	0
	AW7	155	44	120	34	15	2
	AW8	67	17	63	16	1	0
	AX7	139	39	112	30	5	5
	AY9	135	40	103	32	14	28
	AZ9	20	4	20	4	1	0
	BA9	31	21	16	10	3	2
	BB9	86	36	53	19	12	13
	BC9	38	19	22	10	4	0
	BD9	57	14	51	13	8	2
	BE9	88	29	75	23	9	4
	BF5	170	52	124	40	23	38
	BG9	62	16	46	13	11	1
	BH9	26	9	20	8	1	3
	BJ9	79	29	75	28	16	13

Month	Use Area	User-Nights	Group-Nights	People	Permits	First-Nights	Last-Nights
	BL4	55	23	54	22	7	12
	BL5	27	10	25	9	2	3
	BL6	6	2	6	2	1	0
	BL7	150	47	126	43	22	11
	BL8	43	15	41	14	5	2
	BM7	245	74	192	57	33	42
	BM8	113	28	104	26	19	6
	BN9	58	22	40	16	10	10
	BP9	64	11	16	3	0	0
	BQ9	94	22	47	11	7	8
	BR9	43	12	19	6	1	1
	CBG	3,007	915	2,408	748	548	420
	CCG	1,003	308	885	263	211	108
	CIG	1,482	442	1,401	413	147	380
	LA9	68	14	24	5	2	3
	LB9	15	3	5	1	1	0
	LC9	15	3	5	1	0	1
	NA0	3	2	3	2	2	2
	NA1	40	21	34	17	14	16
	NB9	1	1	1	1	1	1
	NC9	10	4	10	4	4	1
	ND9	3	2	3	2	2	2
	NF9	17	11	17	11	8	9
	NG9	4	4	2	2	2	2
	NH1	55	28	38	19	19	15
	NJ0	16	8	10	4	2	3
	NJ1	1	1	1	1	1	1
	NJ2	54	20	38	14	12	5
	NK9	4	1	4	1	1	0
	NN9	2	1	2	1	0	1
	NRH	41	7	15	3	3	2
	SA9	10	6	4	2	2	2
	SB9	2	1	2	1	1	1
	SE2	8	3	6	2	2	1
	SE3	24	9	20	8	7	5
	SRH	43	21	18	7	6	5
	USF	15	2	15	2	2	0
		8,525	2,653	6,800	2,114	1,270	1,229

10

	AA9	6	2	6	2	2	1
	AB0	129	19	48	8	8	8
	AB9	11	3	6	2	1	1
	AC9	38	13	17	6	5	5
	AD9	3	3	1	1	0	0
	AE9	238	80	66	25	21	20
	AF9	71	28	20	11	1	2
	AG9	14	6	7	3	2	1
	AH9	7	4	3	2	0	0
	AJ9	7	4	5	3	1	2
	AK9	275	82	143	45	20	9
	AM9	179	45	147	36	11	21
	AN9	6	3	5	2	2	1
	AP9	29	11	14	5	0	1
	AQ9	6	6	2	2	0	0
	AR9	134	36	26	7	4	3

Month	Use Area	User-Nights	Group-Nights	People	Permits	First-Nights	Last-Nights
	AS9	151	54	51	17	6	10
	AT9	29	8	17	5	2	3
	AU9	48	18	12	5	2	0
	AV9	90	18	45	10	3	1
	AW7	313	79	231	58	29	9
	AW8	135	35	117	31	5	2
	AX7	258	60	213	48	7	4
	AY9	411	88	291	66	27	53
	AZ9	98	18	43	8	2	4
	BA9	171	61	76	28	10	8
	BB9	384	94	209	57	45	33
	BC9	149	55	108	39	6	5
	BD9	270	77	208	62	28	24
	BE9	245	72	197	60	13	27
	BF5	255	82	207	68	45	51
	BG9	128	37	111	33	15	13
	BH9	92	31	92	31	11	5
	BJ9	219	67	183	59	33	34
	BL4	84	30	84	30	11	14
	BL5	46	21	45	20	2	4
	BL6	20	8	20	8	1	1
	BL7	344	102	262	77	38	28
	BL8	96	32	83	28	7	3
	BM7	385	110	295	86	55	53
	BM8	142	40	138	39	20	15
	BN9	255	71	149	45	27	19
	BO9	12	5	12	5	0	0
	BP9	17	8	17	8	1	1
	BQ9	89	36	64	25	10	20
	BR9	215	62	64	19	10	8
	BT9	2	1	2	1	1	1
	BU9	2	1	2	1	1	1
	CBG	3,305	917	2,328	673	485	341
	CCG	1,092	322	919	257	185	112
	CIG	1,612	442	1,460	396	107	362
	LA9	256	49	75	14	11	9
	LB9	73	14	31	6	4	3
	LC9	8	2	4	1	0	1
	LE9	8	2	4	1	1	0
	LF9	16	4	4	1	0	1
	NA0	4	2	4	2	2	0
	NA1	22	11	20	10	9	9
	ND9	3	2	3	2	0	1
	NF9	34	15	26	11	11	9
	NG9	12	4	11	3	1	3
	NH1	54	14	34	10	9	9
	NJ0	10	3	10	3	3	0
	NJ1	2	1	2	1	1	1
	NJ2	26	12	20	8	6	4
	NK9	9	3	3	1	1	1
	NL9	20	3	14	2	2	2
	NN9	6	1	6	1	1	1
	NRH	10	4	5	2	2	1
	SA9	6	5	5	4	4	4
	SC9	3	3	1	1	1	1
	SE0	7	2	7	2	1	1

Month	Use Area	User-Nights	Group-Nights	People	Permits	First-Nights	Last-Nights
	SE2	8	4	5	3	3	0
	SE3	30	8	30	8	7	3
	SF9	18	4	9	2	2	2
	SG9	4	2	2	1	1	1
	SI9	6	2	3	1	1	1
	SRH	17	17	4	4	3	4
	TOR	4	1	4	1	0	1
	USF	18	3	18	3	3	0
		13,011	3,704	9,235	2,672	1,418	1,417

11

	AB0	4	2	4	2	2	2
	AB9	9	1	9	1	1	1
	AC9	130	25	51	11	11	11
	AE9	50	25	16	8	6	6
	AF9	33	12	9	4	0	0
	AG9	12	6	6	3	0	0
	AH9	7	4	5	2	0	0
	AJ9	10	3	10	3	2	0
	AK9	132	60	75	33	6	2
	AM9	21	3	11	2	1	2
	AP9	18	11	10	6	6	4
	AQ9	14	6	6	3	0	1
	AR9	71	16	19	5	3	4
	AS9	77	26	25	9	5	6
	AT9	2	1	2	1	0	0
	AU9	10	5	4	2	0	1
	AV9	6	3	4	2	0	0
	AW7	47	19	35	14	7	1
	AW8	11	5	11	5	0	0
	AX7	56	17	43	13	3	3
	AY9	48	18	40	15	4	14
	AZ9	4	1	4	1	0	0
	BA9	165	51	73	24	12	6
	BB9	241	73	146	48	33	30
	BC9	92	42	71	30	6	6
	BD9	156	57	138	50	22	23
	BE9	128	54	109	44	15	21
	BF5	223	63	175	49	27	38
	BG9	126	47	116	41	24	14
	BH9	58	30	57	29	8	3
	BJ9	125	53	116	49	14	28
	BL4	74	25	74	25	6	15
	BL5	38	14	38	14	3	5
	BL6	16	7	16	7	3	1
	BL7	304	87	248	73	34	25
	BL8	67	20	63	19	7	4
	BM7	280	85	236	70	43	37
	BM8	119	37	117	35	15	12
	BN9	147	51	98	38	20	17
	BO9	7	6	4	3	0	1
	BP9	8	2	4	1	0	0
	BQ9	120	33	71	20	10	16
	BR9	220	57	62	17	10	8
	BT9	20	2	10	1	1	1
	CBG	2,707	867	1,842	602	505	348

Month	Use Area	User-Nights	Group-Nights	People	Permits	First-Nights	Last-Nights
	CCG	426	154	269	104	53	42
	CIG	1,303	407	1,149	360	103	329
	LA9	22	8	6	2	1	2
	LB9	7	2	7	2	2	2
	LC9	53	7	13	2	2	2
	LJ9	10	2	5	1	1	1
	NC9	2	2	1	1	1	1
	NCG	5	3	5	3	0	0
	NH1	14	3	8	2	2	2
	NJ0	3	1	3	1	1	0
	NJ2	7	4	5	3	2	1
	NK9	2	2	1	1	1	0
	NL9	2	2	1	1	0	1
	NM9	2	2	1	1	1	1
	NN9	6	3	2	1	1	1
	NTL	14	3	9	2	0	1
	SC9	2	1	2	1	1	1
	SE2	3	1	3	1	1	1
	SE3	26	6	19	4	4	2
	SG9	2	2	2	2	2	2
	SI9	4	1	4	1	1	1
	SRH	12	6	4	2	2	2
		8,140	2,654	5,802	1,932	1,057	1,112

12

	AC9	9	3	7	2	2	2
	AH9	2	1	2	1	0	0
	AJ9	6	2	6	2	0	0
	AK9	125	40	62	20	5	3
	AP9	33	13	19	7	2	1
	AQ9	2	2	1	1	1	1
	BA9	30	16	20	10	2	2
	BB9	52	28	31	17	14	11
	BC9	86	26	43	16	1	0
	BD9	49	12	42	11	3	2
	BE9	36	14	32	12	1	5
	BF5	24	10	22	9	4	4
	BG9	8	6	8	6	3	1
	BH9	35	19	30	17	4	2
	BJ9	61	30	58	28	12	11
	BL4	41	16	40	15	4	4
	BL5	29	11	19	8	1	1
	BL6	17	7	17	7	0	0
	BL7	68	25	56	22	6	8
	BL8	24	9	24	9	0	3
	BM7	76	32	72	30	21	11
	BM8	16	6	16	6	3	1
	BN9	37	19	28	14	3	6
	BO9	3	2	3	2	1	0
	BP9	5	3	3	2	0	1
	BQ9	8	3	8	3	0	3
	BR9	29	9	8	3	2	0
	BT9	6	1	6	1	1	0
	CBG	1,515	521	994	350	314	213
	CCG	123	46	89	32	3	2
	CIG	496	184	464	169	47	139

Month	Use Area	User-Nights	Group-Nights	People	Permits	First-Nights	Last-Nights
	LC9	4	2	2	1	1	1
	NCG	3	2	3	2	0	0
	NL9	2	2	1	1	1	1
	NTL	6	6	1	1	0	0
	SC9	3	1	3	1	1	0
	USF	2	2	1	1	0	0
		3,071	1,131	2,241	839	463	439
		92,077	27,985	68,607	21,004	12,139	12,143

Key	
Permit	Permits are issued for groups of 1 to 11 people for one or more nights.
User-Night	Each individual person in the canyon for one night.
Group-Night	One group in the canyon for one night.
People	Each individual included on a permit (ignores how long in the canyon)
First-Night	Total groups camping in this area on the first night of their itinerary (helps indicate trail usage).
Last-Night	Total groups camping in this area on the last night of their itinerary (helps indicate trail usage).