



GRAND CANYON

N A T I O N A L P A R K

Arizona

Grand Canyon

NATIONAL PARK
ARIZONA

Contents

The Canyon	4
Geology of the Canyon	5
The Colorado River	5
Wildlife in the Park	5
Indians	5
The Views From the Rims	6
Exploring the Inner Trails	6

Events OF HISTORICAL IMPORTANCE

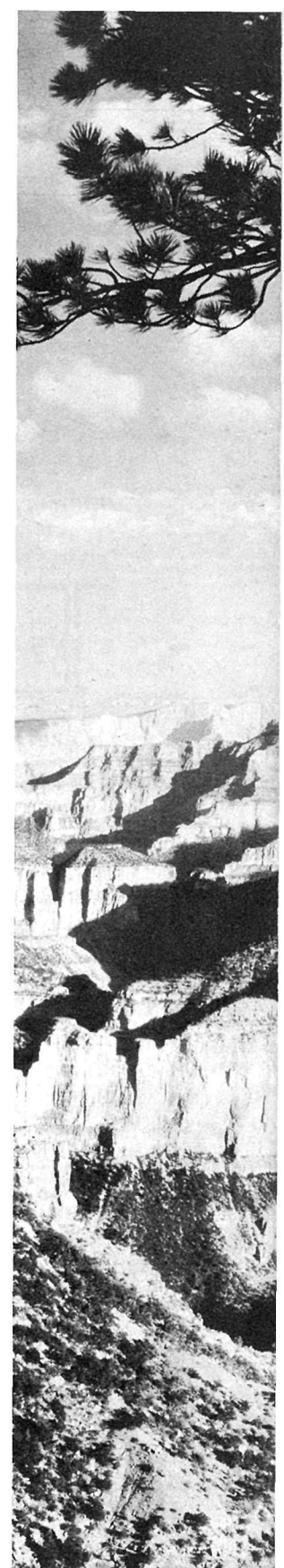
- 1540 Don Lopez de Cardenas, with a party of 12 men, members of Coronado's expedition from Mexico, discovered the Grand Canyon.
- 1776 Father Garces and Father Escalante, Spanish padres, led exploring parties into the Grand Canyon region.
- 1826 First Americans visited the Grand Canyon. James O. Pattie, beaver trapper, and his father followed the South Rim from west to east.
- 1858 First Government exploring party visited the Grand Canyon region. Lieutenant Ives and party from the War Department traveled by steamboat up the Colorado River to Black Canyon (in which Boulder Dam is located), thence overland along the south side of Grand Canyon.
- 1869 Maj. J. W. Powell made the first successful boat trip down the Colorado River.
- 1890-91 The Bright Angel Trail, following an old Indian route, was constructed by a group of prospectors.
- 1892 Capt. John Hance built a cabin east of Grandview. It was the first house on the rim of Grand Canyon.
- 1897 Grandview Hotel opened. A stage using three changes of horses brought visitors from Flagstaff, 72 miles distant, in 12 hours.
- 1898 Bucky O'Neil, one of Colonel Roosevelt's Rough Riders, built a cabin at Rowe Well, 3 miles west of Grand Canyon Village. The cabin still stands.
- 1900 The Bright Angel Hotel was established. One cabin and tents.
- 1901 September 18, first passenger train to the Grand Canyon.
- 1903-4 F. E. Matthes made the United States Geological Survey map of the Bright Angel section of Grand Canyon and named many of the temples and buttes.

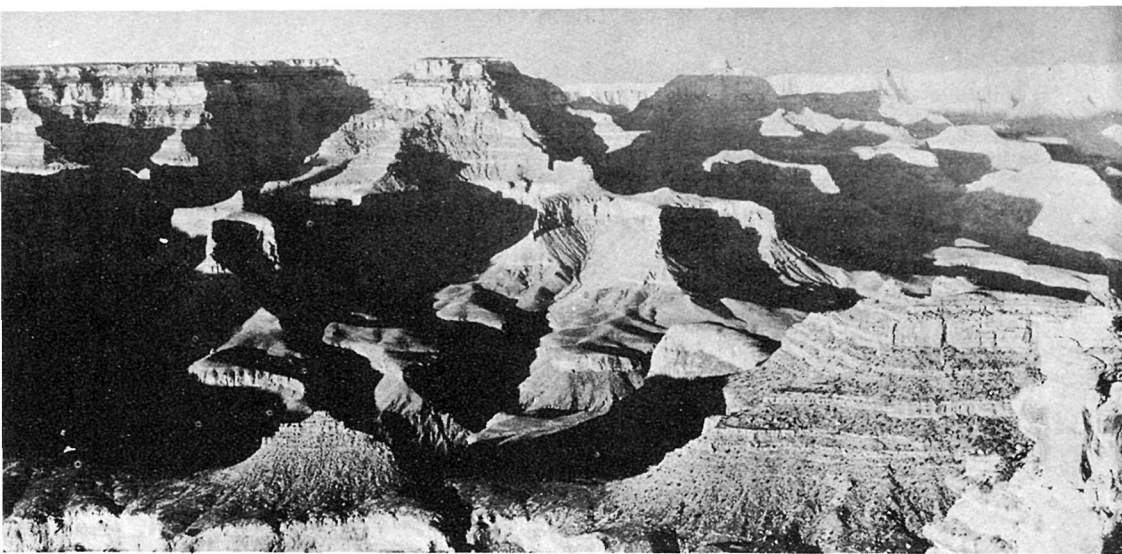
Administration, Services, and Accommodations	7
South Rim	8
Bus, Saddle, and Airplane Trips	9
Schedule of Naturalist Services	11
Miscellaneous Services	11
North Rim	12
Bus, Saddle, and Airplane Trips	13
Schedule of Naturalist Services	13
Miscellaneous Services	14
Auto Trips From Rim to Rim	14

- 1904 Hotel El Tovar was built.
- 1905 Uncle Jimmy Owens came into the Kaibab Forest as a lion hunter. In the following years he killed several hundred lions along the North Rim.
- 1908 Theodore Roosevelt, as President of the United States, made Grand Canyon a national monument.
- 1919 Grand Canyon created a national park by act of Congress.
- 1921 The old Dave Rust aerial tram, across the Colorado River at the mouth of Bright Angel Creek, was replaced by a suspension bridge. This structure was later (1928) replaced by the present bridge.
- 1924 Fossil footprints were discovered in the Grand Canyon.
- 1928 The Kaibab Trail was opened to the public on May 21.
- 1929 Navajo Bridge, across the Colorado River, 7 miles downstream from Lee's Ferry, was built.
- 1935 New Navahopi Road to Cameron completed.



UNITED STATES DEPARTMENT OF THE
INTERIOR - - - Harold L. Ickes, *Secretary*
NATIONAL PARK SERVICE
Arno B. Cammerer, *Director*





LIGHTS AND SHADOWS IN THE CANYON

THE Grand Canyon National Park contains one of the world's greatest natural wonders—the Canyon for which it is named. This superb work of nature first impresses the visitor by its immensity. The vast distances from the rims down to the surging Colorado River, looking like a narrow ribbon at the bottom of the gorge, are almost bewildering.

As one views the Grand Canyon, its gorgeous, almost unbelievable coloring, made up of all hues of the rainbow, is constantly changing. When the colors shift and the shadows shorten and lengthen, the shapes of the towers, buttes, and pinnacles rising from the Canyon floor seem to change and some of the formations disappear entirely—all resembling a huge motion picture in color.

To be appreciated fully, the Grand Canyon should be seen from both top and bottom, as well as in relation to the absorbing region which surrounds it. Only in this way can one reap the full measure of enjoyment in seeing and knowing this vast wonderland.

Grand Canyon National Park was established by act of Congress, approved February 26, 1919. It has an area of 1,008 square miles, is 56 miles long, and contains 105 miles of the winding Colorado River.

THE CANYON

The Canyon is 217 miles long, measured by the river's course, and from 4 to 18 miles in width, all within the State of Arizona. It is 10 miles wide at Yavapai Station. The bottom of the Canyon below Yavapai Point is 2,500 feet above sea level, about 4,500 feet below the South Rim, and is 5,700 feet below the North Rim, making an average depth of about 1 mile.

Grand Canyon National Park . Arizona

Six of the seven climatic belts recognized throughout America are represented in the Grand Canyon region. They vary from that of desert Mexico at the Canyon bottom to the Arctic-Alpine type of the nearby San Francisco Peaks.

GEOLOGY OF THE CANYON

The Grand Canyon is the result of stream-cutting made possible by the combination of a semiarid climate and the high surface elevation (7,000 to 9,000 feet) of the plateau. The profound depth, the vast width, the perspective of repeated rock steps diminishing into the hazy distance, and the color of the banded rocks contribute to an impression that is as lasting as it is difficult to comprehend.

Exposed in the gorge is one of the most complete sections of rocks known. They range from Archean age (the oldest known) to Permian. The old rocks of the basement complex, tilted formations, breaks in the record which show the lapse of millions of years, molten rock that solidified into granite, and faults are all represented in the canyon section of the broad arch of the plateau.

THE COLORADO RIVER

The Colorado is the second longest river in the United States, about 2,000 miles long, and it cuts 19 major canyons along its course. At the gauging station at Grand Canyon the river averages about 300 feet in width, varies from 12 to 45 feet in depth, and flows at a speed of 2½ to 10 miles an hour. It carries past this station an average of nearly 1 million tons of sand and silt every 24 hours. The river empties into the Gulf of California in Mexico.

Boulder Dam is 260 miles downstream from the Kaibab Suspension Bridge. It will not affect the Grand Canyon's section of the Colorado River, as the water will back up in Lake Mead only to within 60 miles of the park.

WILDLIFE IN THE PARK

Animal life in the park includes about 180 species of birds, 60 species of mammals, 25 reptiles, and 5 amphibians. During the growing season both rims and the Canyon slopes are covered with a great variety of wildflowers.

INDIANS

About 500 ruins of ancient Indian pueblos have been discovered in the Canyon and on the rims. Cliff dwellings made by these Indians are found along the lower walls of the Canyon in many places, especially noteworthy ones being at Clear Creek.

There are four Indian tribes living in the Grand Canyon region today. The Navajo, a pastoral people numbering about 48,000, live in the largest Indian reservation in the United States, just east of Grand Canyon. The

Grand Canyon National Park . Arizona

Hopi, a pueblo farming people numbering about 2,500, live on three mesas north of the Painted Desert. The Paiutes are found to the north. The Havasupai, an agricultural people, numbering about 200, live within the park boundaries in Havasu Canyon, west of Grand Canyon Village.

THE VIEWS FROM THE RIMS

The Grand Canyon should be seen first from the many spectacular observation points on its two rims. Excellent motor roads, footpaths, and bridle paths present view after view of the Canyon's varied and ever-changing panorama.

The drive along the South Rim covers nearly 35 miles of well-paved roads. It passes at times through interesting pine forests, only to emerge at short intervals upon startling views of the Canyon. Westward from El Tovar Hotel, the drive includes Powell, Hopi, Mohave, and Pima Points, each offering its own superb view, and finally Hermit Rest. This unique resthouse built of Canyon boulders, with its rustic lounge, great fireplace, and observation porch, is an attraction in itself.

Eastward, the route is over the Desert View Road through the Kaibab National Forest and along the Canyon's rim. Stops are made at Yavapai Observation Station and at Yaki, Grandview, Moran, and Lipan Points. The end of the drive eastward brings the traveler to the Desert View Observation Tower. Built of native stones on the brink of the Canyon wall, the tower commands one of the most breath-taking of Grand Canyon views as well as a startling panorama of the Painted Desert.

On the North Rim a paved highway extends from Grand Canyon Lodge eastward to Point Imperial, Farview, Vista Encantada, and Cape Royal. The highway, winding through a magnificent forest, emerges at the various observation points for striking views of the Canyon and sweeping panoramas of the Painted Desert. Another interesting trip, and one of the most beautiful in the park, is the woodland drive to Point Sublime. Traveling along the North Rim one looks on the scene from an altitude 1,200 feet higher than the South Rim.

EXPLORING THE INNER TRAILS

Exploring the Grand Canyon by descending the trails to its innermost fastnesses is a memorable experience. The descent is made on muleback in parties led by experienced guides who know every inch of the trails as well as their sure-footed mounts.

There are two splendid trails from the South Rim to the Colorado River, in the bottom of the Canyon. The one most frequently used is the famous Bright Angel Trail. From the rim to the river, every turn in this well-built trail opens up new vistas, each seemingly more spectacular than the

one before. About half-way down, a brief stop is made at Indian Gardens, after which the trail stretches out upon the Tonto Plateau and presently heads downward through Granite Gorge to the rocky banks of the turbulent Colorado. After a pleasant interlude for luncheon and rest, the return journey is made in easy stages, arriving on the rim in late afternoon.

Even more spectacular, from a scenic standpoint, is the trip over the Kaibab Trail. Starting from the South Rim at Yaki Point, the downward journey unfolds an ever-changing panorama until the Tip-Off is reached, from which point the trip continues across the 440-foot Colorado River suspension bridge, arriving late in the afternoon at Phantom Ranch for dinner and an overnight stop. The return journey is made over the Kaibab or Bright Angel Trails, reaching the South Rim late in the afternoon of the second day.

From the North Rim, the cross-canyon Kaibab Trail starts down into the Canyon from Bright Angel Point, descending into Roaring Springs Canyon through quaking aspen, fir, pine, and oak brush to the Redwall limestone section where it was hewn from rock cliffs by drill and gunpowder. At the mouth of Manzanita Creek, the trail enters Bright Angel Canyon. From this section may be seen one of the most beautiful sights on the entire trip—the spectacular springs which gush forth with a roaring sound from beneath the Redwall limestone, cascading down an oak-covered mountainside to the gorge 40 feet below. Farther down the picturesque Box Canyon of the Bright Angel Creek, and 5 miles above Phantom Ranch, is Ribbon Falls. Phantom Ranch, nestling among the towering crags of Bright Angel Canyon, nearly a vertical mile below the rims, is an ideal place to spend a night or two, and is a center for trout fishermen.

The trip from the North Rim to Phantom Ranch and return takes 2 days. The 1-day trip from the North Rim to Roaring Springs and return is very popular. The trip from rim to rim, either way, takes 2 full days, with an overnight stop at Phantom Ranch.

Of particular interest to the traveler descending the Canyon trails is the succession of plant growth equivalent to several climatic zones and representing botanical variations ordinarily seen only in traversing hundreds of miles of level country.

To the North, paved highways lead across the Prismatic Plains and through quaint, historic Mormon villages to the colorful canyon regions of Zion and Bryce Canyon National Parks and the giant amphitheater of Cedar Breaks.

ADMINISTRATION, SERVICES, AND ACCOMMODATIONS

Park Headquarters.—Grand Canyon National Park is under the administration of the National Park Service, United States Department of

the Interior, Washington, D. C. The park is in immediate charge of Dr. H. C. Bryant, acting superintendent, with headquarters on the South Rim at Grand Canyon Village. Visitors are cordially welcomed at park headquarters and are invited to make the fullest use of the information bureau and reference library.

Ranger Service and Educational Facilities.—In addition to the regular nature-guide hikes, motor caravans and campfire lectures by park rangers on both rims, the National Park Service maintains a free observation station and trailside museum at Yavapai Point on the South Rim. Here are given, during the summer season, informal lectures on the origin, history, and plant life of the Grand Canyon region. The Wayside Museum and excavated ruin at Lipan Point explain the archeology of the region.

Living Expenses.—The cost of a Grand Canyon outing depends on the visitor's tastes and the size of his vacation budget, for the Grand Canyon offers a complete range in living accommodations—free public camp; inexpensive housekeeping cabins; low, moderate, and higher-priced accommodations in camps, lodges, and hotels. Rates for these accommodations and all other services in the park are regulated by the National Park Service.

SOUTH RIM

(OPEN ALL THE YEAR)

Hotels, lodges, camps, and transportation services are under the management of Fred Harvey.

El Tovar Hotel.—Situated on the very brink of the chasm, El Tovar is one of the most famous resort hotels in the Southwest. It is built of native boulders and pine logs, with more than 80 guest rooms. Rates range from \$2.50 per day, European plan, for one person in a room without bath, to \$11.50 and up per day, American plan, for two persons in a room with bath. Meals are: Breakfast, \$1; luncheon, \$1; dinner, \$1.50. For children from 3 to 7 years of age, the rates are half; a discount of 10 percent is allowed to guests remaining 7 days or more.

Bright Angel Lodge and Cabins.—Modern, comfortable and attractive accommodations, at a wide price range, are provided in the Bright Angel Lodge, situated on the Canyon's rim near the head of Bright Angel Trail. Attractive lounge and entertainment facilities, as well as various shops and services, are available in the main lodge, and a large coffee shop provides à la carte service at moderate prices. In addition to the Bucky O'Neil 17-room lodge and the Powell 25-room lodge, there are many comfortable and attractive cabins, offering considerable variety in the character and extent of their accommodations. Rates are from \$1.50 per day for a single

room without bath to \$4.50 and up per day for two in a room with bath, European plan. Half rates are given for children from 3 to 7 years of age; guests staying 7 days or longer are allowed a discount of 10 percent. Plate breakfasts and luncheons are 50 cents, dinners 85 cents.

Auto-Camp Cabins.—In Grand Canyon Village there is a motor camp consisting of a camp lodge, with grocery, soda fountain, and other facilities, and a large number of furnished housekeeping cabins. Rates range from \$1.25 to \$2.25 per day, with a discount of 10 percent for those remaining 4 days or longer. These rates include fuel, water, and electric lights, but not bedding and linen, which may be rented at the camp lodge if desired. Public bath, toilet, and laundry facilities are available.

Phantom Ranch.—Picturesquely located at the very bottom of the Canyon—a vertical mile below the rims—Phantom Ranch consists of a group of rustic cabins surrounding a central lodge, providing every modern convenience, including a swimming pool, for a brief or extended stay in the depths of the chasm. Phantom Ranch is operated on the American plan, \$6 per person per day. Reservations should be made at Bright Angel Lodge or El Tovar Hotel before leaving the rim.

Public Campgrounds.—These are maintained by the National Park Service near Grand Canyon Village and adjacent to the auto cabins and stores. Motorists bringing their own equipment may make free use of these grounds, which are equipped with cooking fireplaces, tables, benches, water, and sanitary facilities. As water is obtained with difficulty in this region, visitors are requested to conserve it as much as possible.

BUS, SADDLE, AND AIRPLANE TRIPS

Bus Trips.—There are certain trips that every Grand Canyon visitor wants to make if he possibly can allow the time. The Grand Canyon Rim drives to Hermit Rest, 8 miles to the west, and Desert View, 25 miles to the east, which are especially popular, are \$3 and \$6, respectively. These may be taken singly, or the combination trip is \$7. Another popular tour is to the well-known, but little seen, Navajo and Hopi Indian Reservations, east of the park by way of the suspension bridge over the Little Colorado River and through the Painted Desert country. Glimpses of Indian life may be had at Tuba City, where there are Navajos, and the Hopi village of Moenkopi is interesting. The trip is \$12, including lunch.

Saddle Trips.—There are very few days of the year when one cannot make the Bright Angel Trail trip, a distance of 7.8 miles, from the South Rim to the Colorado River. The cost of this trip, including lunch, is \$6. Another spectacular trail trip is the one to Phantom Ranch via the Kaibab Trail, crossing the suspension bridge over the Colorado River. A 3-day

SCHEDULE OF NATURALIST SERVICES

(OFFERED BY NATIONAL PARK SERVICE WITHOUT CHARGE)

outing, spending 2 nights at Phantom Ranch and visiting Ribbon Falls and Roaring Springs, is scheduled. In 2 days the visitor may cross the Grand Canyon from one rim to the other, spending a night at Phantom Ranch and lunching at Ribbon Falls. Still another 1-day horseback outing is to Dripping Springs. The route follows Hermit Rim Road and Hermit Basin to Dripping Springs, returning through the forest. These trips range in price from \$5 to \$30.

Pack Trips.—There are many opportunities for interesting pack trips into the Canyon and surrounding country for which special arrangements may be made. Experienced guides are in charge. On account of weather conditions, trail trips along the Canyon and the rim country are usually practicable from April to December; from December to April they are confined to the inner canyon. Another unusual scenic trip is that to Rainbow Bridge, a unique natural bridge whose symmetrical arch suggests a rainbow. Although its existence had been known for many years, only a very few white persons visited it in the past, because of the difficult journey involved. Now one can get within 15 miles by car and make the rest of the trip on horseback. Rainbow Bridge is a national monument under the jurisdiction of the National Park Service.

Saddle Horses.—So many new bridle paths have been opened recently along the rim and through the pine forests that horseback riding now is a favorite pastime. Horses may be rented for \$1.50 for 2 hours on regularly scheduled trips accompanied by a guide; half day \$3, full day \$5. For other than the scheduled trips, a special guide is required, as horses are not rented unless accompanied by a guide. Special guide rate, \$3 half day, \$5 full day.

Emergency Trail Service.—Visitors who walk down the Canyon trails from either the South or North Rim may have saddle mules sent to meet them. The charge for such service is necessarily greater than the regular scheduled mule-back trips into the Canyon, since it involves special guide service.

Airplane Trips.—The Grand Canyon Airlines operates daily scenic flights, weather permitting, over Grand Canyon and to various points of interest in the vicinity of the park, using single motor cabin-passenger planes. The daily scenic flights over the Canyon, from either rim, lasting about 45 minutes, cover approximately 90 miles. Chartered trips are available to Rainbow Bridge, Monument Valley, Betatakin, the Hopi villages, Navajo country, Boulder Dam, and various points of interest; also to nearby cities and the Pacific coast. Tickets for the scenic flights over the Canyon may be secured at the hotels or lodges on either rim, where arrangements also may be made for special trips by air.

Yavapai Observation Station.—The story of Grand Canyon told with telescopes and exhibits. Open daily throughout the year. Located on Yavapai Point, 1½ miles east of Grand Canyon Village.

Wayside Museum of Archeology.—The story of early man in the Southwest and his place in earth history told with exhibits. Excavated pueblo ruin nearby. Open daily during summer season. Located 20 miles east of Village on Desert View Drive.

Reference Library.—Small collection of books on Grand Canyon region at park administration building. Available for use to visitors upon application to ranger on duty.

Auto Caravan.—Conducted trip along Desert View Drive in which visitors travel in own cars. Twice daily throughout summer season. Distance 26 miles, one way. Starts 8:30 a. m., 2:30 p. m., in front of public garage.

MISCELLANEOUS SERVICES

Postal and Telegraph.—The post office is located directly opposite the park administration building. Post-office address is Grand Canyon, Ariz. The Western Union office is in El Tovar Hotel.

Telephone.—There is telephone connection between the South and North Rims. Complete telephone service, both local and long distance, to all points is available through the commercial exchange of the Mountain States Telephone & Telegraph Co., located near the park administration building.

Medical.—The National Park Service maintains a modern hospital near the administration building. A competent, experienced physician and a well-qualified, trained nurse are continuously on duty. The doctor's office is in the hospital, phone 14; residence, phone 35.

Automobile Supplies.—At Grand Canyon Village there is a garage under the management of Fred Harvey Co. Storage or repair service, as well as gasoline and oil, may be procured there. Gasoline is sold at prices prevailing on United States Highway No. 66.

Groceries and Supplies.—The Babbitt Brothers Trading Co. operates a general store at Grand Canyon, carrying a full line of groceries, meats, fresh fruits and vegetables, hardware, dry goods, outing apparel, and other travelers' necessities.

Photographs and Souvenirs.—Photographs, postcards, view books, etc., are on sale at newsstands in El Tovar Hotel, Bright Angel Lodge, Auto Camp Lodge, the Lookout Studio, Kolb's, and Verkamp's. Blankets, baskets, pottery, jewelry, and other Indian handicraft may be purchased at the Hopi House, the Indian Shop in Bright Angel Lodge, and Verkamp's. Books on the Southwest and Canyon souvenirs are on display and for sale in the Art Room at El Tovar Hotel.

Kodak Finishing.—The services of a first-class photographer are available for developing and finishing kodak films and prints. Films left at the newsstands in El Tovar Hotel, Bright Angel Lodge, Auto Camp Lodge, or Lookout Studio before 12:30 p. m., will be developed promptly and finished prints will be ready for delivery at 6 p. m. Overnight finishing service is available during the summer season.

Barber Shop and Beauty Shop.—Conveniently located in the new Bright Angel Lodge are a barber shop and beauty shop with skilled operators and modern equipment. There is also a barber shop in El Tovar Hotel.

NORTH RIM

(OPEN SUMMER SEASON ONLY)

Because of the heavy winter snows, hotel accommodations on the North Rim are available only from May 30 to September 30. This section is open to travel, however, until approximately October 15, when the road is blocked by snow. After October 1, and as long as weather conditions permit, the cafeteria and housekeeping cabins are open. The Kaibab Lodge, 18 miles from the North Rim on the main entrance road, also provides accommodations, meals, and other facilities.

Lodges, camps, and transportation service are under the management of the Utah Parks Co.

Grand Canyon Lodge.—Located on Bright Angel Point, a long arm extending out into the Grand Canyon, between two side canyons, known as the Bright Angel Creek Canyon and the Transept, this main North Rim hotel unit commands superb scenic views. The lodge is composed of a rustic stone and log building, situated on the very brim of the Canyon, containing the dining room, office, recreation room, curio store, barber shop, beauty parlor, and post office. Comfortable sleeping cabins are grouped among the trees adjacent to the main building. In the standard cabins, rooms without bath are \$2.25 per day for one person, or \$3.50 for two. The deluxe type cabins are equipped with bath, fireplace, and porch and are \$5 per day for one person to \$8.25 for three.

Auto-Camp and Cafeteria.—One mile north of the main lodge there is an auto, camp consisting of a main building in which cafeteria service is provided, with meals at reasonable rates, and where groceries, meats, fresh milk, vegetables, and campers' supplies of all kinds are obtainable. The cabins accommodate one, two, or three persons at \$2 per day. Surrounding this camp are a number of housekeeping cabins, the rates ranging from \$3.25 per day for two persons to \$4.50 for four, including fuel, water, and electric lights. Bath, toilet, and laundry facilities are available. A moderate additional charge is made for equipping the housekeeping cabins with blankets and bed linen.

Public Campground.—Motorists having their own camping equipment may make free use of the campgrounds maintained by the National Park Service at Bright Angel Point and Neil Springs.

BUS, SADDLE, AND AIRPLANE TRIPS

Bus Trips.—Regularly scheduled motorbus trips are made from Grand Canyon Lodge over a paved road to Point Imperial and Cape Royal with stops at Farview, Vista Encantada, and other points of interest along the Canyon rim. Trips also are available to Point Sublime. The sightseeing tours are \$3. Special trips may be arranged to the surrounding Indian country or elsewhere as desired. Automobiles also may be chartered. An all-expense 6-day tour from Grand Canyon to Zion National Park, Cedar City, Utah, Cedar Breaks National Monument, Bryce Canyon National Park, via Kaibab Forest and Mount Carmel Highway is \$58.75.

Saddle-Horse Trips.—Horseback riding is particularly enjoyable on the North Rim, where many miles of bridle paths have been constructed by the National Park Service through the dense forests of pine, fir, and spruce. One-day escorted trips are made to Point Imperial or Point McKinnon. Shorter trips with or without guides, are available to Uncle Jim Point, and special trips may be made as desired. The saddle-horse trail trips range in price from \$3 to \$30. Trail trips into the Canyon by muleback are under the management of Fred Harvey. Among them is a popular 1-day trip down the Kaibab Trail to Roaring Springs and Bright Angel Creek, which costs \$5 and with transportation to the head of the trail and lunch is \$7. Overnight trips also are made to Phantom Ranch or the South Rim.

Airplane Trips.—Arrangements may be made at the lodge for scenic flights over the Canyon, and scheduled trips to the South Rim, Pierce's Ferry, and Las Vegas, Nev., where connections are made with United Air Lines and Western Air Express. These flights are under the management of the Grand Canyon Airlines, and leave from the airport at De Motte Park, 18 miles from the North Rim headquarters.

SCHEDULE OF NATURALIST SERVICES

Auto Caravan.—Conducted trips along Cape Royal Drive in which visitors travel by company bus or in their own cars. Daily throughout the summer season. Round trip distance is 52 miles. Starts at 1:30 p. m. at public campgrounds in front of cafeteria.

Nature Walk.—Guided walking trip to end of Bright Angel Point. Geological and biological features explained. Every morning throughout the summer season. Starts at Grand Canyon Lodge at 9 a. m.

Campfire Talk.—Subjects include origin, fossils, animals, Indians, etc., of Grand Canyon. Every evening during the summer season, at 8:30 p. m. at campfire site in public campgrounds, weather permitting. An entertainment program and a naturalist lecture are given at the lodge each evening.

MISCELLANEOUS SERVICES

Postal and Telegraph.—A post office is maintained from June 1 to October 1; address, Kaibab Forest, Ariz. A Western Union office is open during the season and the telegraphic address is North Rim, Grand Canyon, Ariz.

Telephone.—There is a telephonic connection between Grand Canyon Lodge and South Rim headquarters, also to various points throughout the park and to all of the deluxe sleeping cabins. Local and long distance connections are made through the switchboard located in the office of the main lodge. Long distance communication may be had with any point served by commercial telephone lines.

Medical.—An experienced doctor and nurse are on duty at the Grand Canyon Lodge throughout the season.

Automobile Supplies.—A first-class garage is maintained by the Utah Parks Co., where autostorage, repairs, tires, batteries, gasoline, oil, etc., are available.

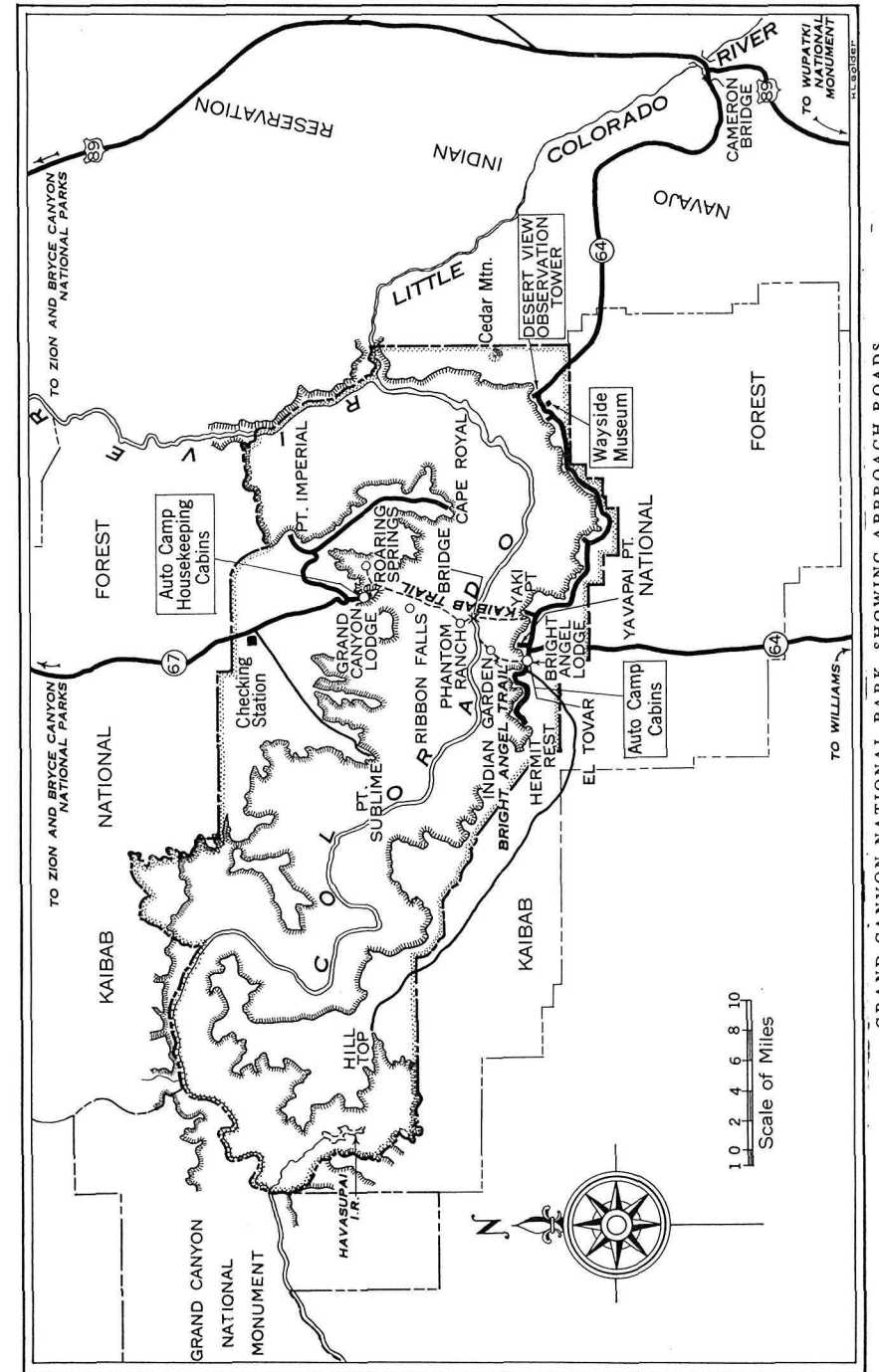
General Supplies.—At the cafeteria building in the campground, groceries, meats, milk, eggs, and general campers' supplies are for sale. Indian handicraft, including baskets, Navajo rugs, and jewelry, also may be obtained.

Photographs and Souvenirs.—Adjacent to the recreation room and office in the main lodge is a curio store which carries a full line of Indian rugs, baskets, pottery, and jewelry, as well as travelers' needs, films, photographs, postcards, magazines, etc. Soda fountain service also is available. In this shop a Navajo silversmith is engaged throughout the summer making jewelry of native design.

Kodak Finishing.—Films are developed and finished promptly. Orders may be left with the attendant in the curio shop in the main lodge building or at the cafeteria. Films left by 8 p. m. will be developed and printed ready for delivery by 7 o'clock the following morning.

AUTO TRIPS FROM RIM TO RIM

The trip by auto from the South to the North Rim may be made by either of two routes. The shorter and easier is via the Navahopi Road to Cameron, thence over United States Highway No. 89 by way of the Navajo Bridge and Houserock Valley to Jacob Lake, thence south through the Kaibab National Forest to Grand Canyon Lodge, a distance of approximately 215 miles. The longer route between the rims is via Williams and Kingman, Ariz., Boulder Dam, Las Vegas, Nev., St. George, and Zion National Park, Utah, and Fredonia, Ariz. The distance is approximately 618 miles.



RULES AND REGULATIONS

THE FOLLOWING SUMMARY of rules is intended as a guide for all park visitors. You are respectfully requested to facilitate the best in park administration by carefully observing the regulations. Complete regulations may be seen at the office of the superintendent.

Preservation of Natural Features.—The first law of a national park is preservation. Disturbance, injury, or destruction in any way of natural features, including trees, flowers, and other vegetation, rocks, and all wildlife, is strictly prohibited. Penalties are imposed for removing fossils and Indian remains, such as arrowheads, etc.

Camps.—Camp or lunch only in designated areas. All rubbish that will burn should be disposed of in campfires. Garbage cans are provided for nonflammable refuse. Wood and water are provided in all designated campgrounds.

Fires.—Fires are absolutely prohibited except in designated spots. Do not go out of sight of your camp, even for a few moments, without making sure that your fire is either out entirely or being watched.

Dogs, Cats, or Other Domestic Animals.—Such animals are prohibited on Government lands within the park except as allowed through permission of the superintendent, secured from park rangers at entrances.

Automobiles.—The speed limit of 35 miles an hour is rigidly enforced. Park drives are wide and smoothly surfaced. It should always be remembered that each driver's own carefulness and responsibility to others are the greatest safety factors involved. The fee for an automobile permit is \$1.

Extreme caution should be taken while driving along the park roads. Squirrels are tame and their existence is imperiled by fast driving. Many deer range the forest and sometimes the highways, and care should be taken not to hit them.

Trail Travel.—Hikers and riders shall not make short cuts, but shall confine themselves to the trails at all times. Saddle animals have the right-of-way over pedestrians. The latter will take the outer side of the trail whenever possible and shall stand quietly until animals have passed.

Hunting.—Hunting within the park boundaries is prohibited. No firearms are allowed except as provided for through permission of the superintendent, secured from park rangers at entrances.

Fishing.—From June 1 to September 30, inclusive, fishing is allowed in certain park streams. A State of Arizona license is required.

Park Rangers.—Park rangers are public servants. They are here to answer your questions and otherwise help you in every possible way. Help them to serve you better by observing these regulations.

Carelessness breeds destruction—Take no chances.