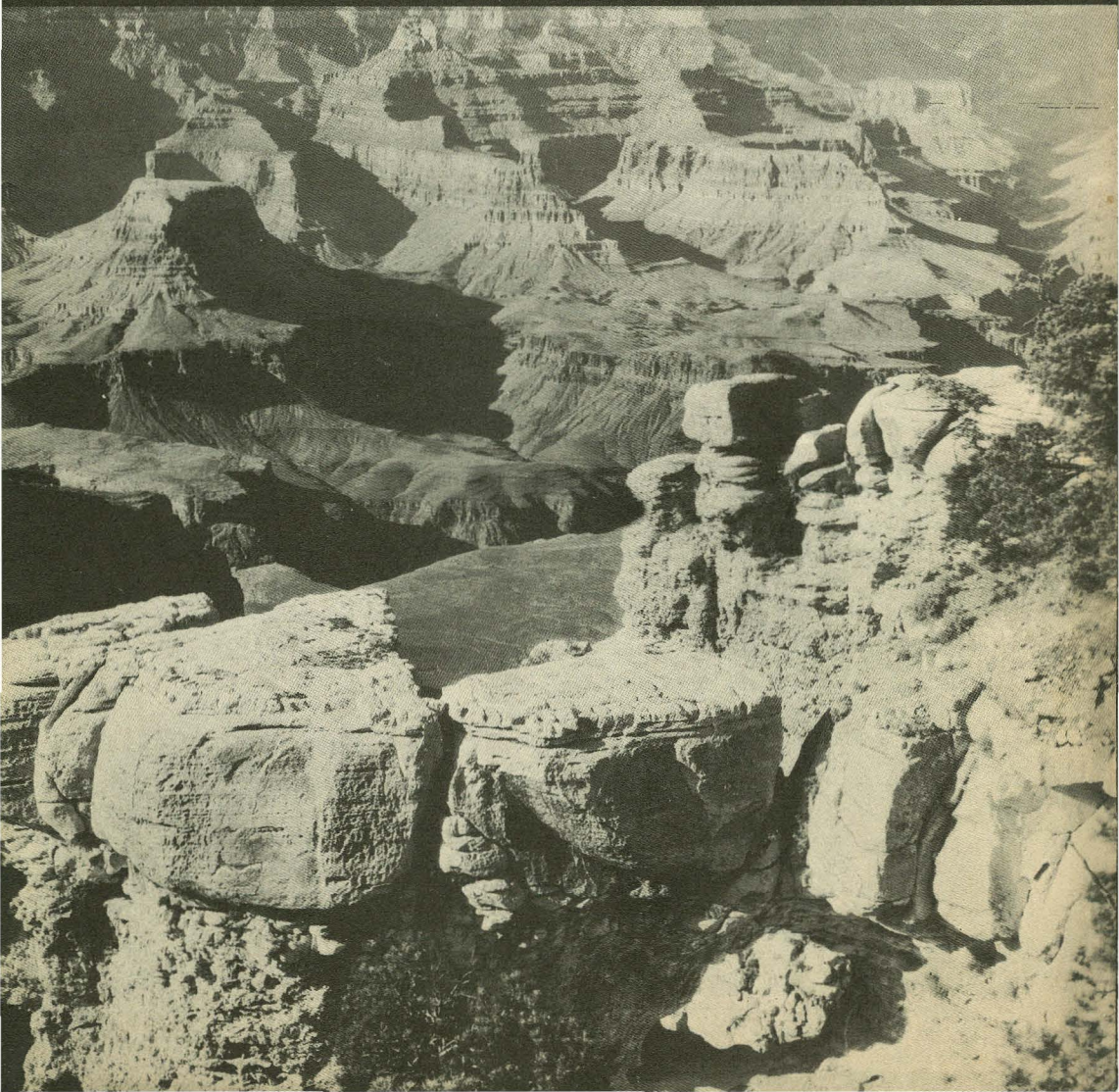


GRAND CANYON

NATIONAL PARK - ARIZONA



THE DIVINE ABYSS

—John Burroughs

THE world's most wonderful spectacle, ever-changing, alive with a million moods—that is the Grand Canyon.

It is a titanic gorge, 4 to 18 miles wide, 217 miles long, and a mile deep. At the bottom a mighty river, the Colorado, rushes toward the sea. Rising from its depths are whole ranges of mountains, reaching a mile toward the sky. Over the rock temples and into the depths of the chasm spreads a sea of seemingly unreal, constantly changing colors.

Watching from the South Rim in the early morning, when the light slants lengthwise from the Painted Desert, one sees the great capes of the opposite rim suddenly outlined in golden light against which their shapes loom in hazy blues. Down in the gorge, here and there, stretches of the Colorado River reflect the sunlight.

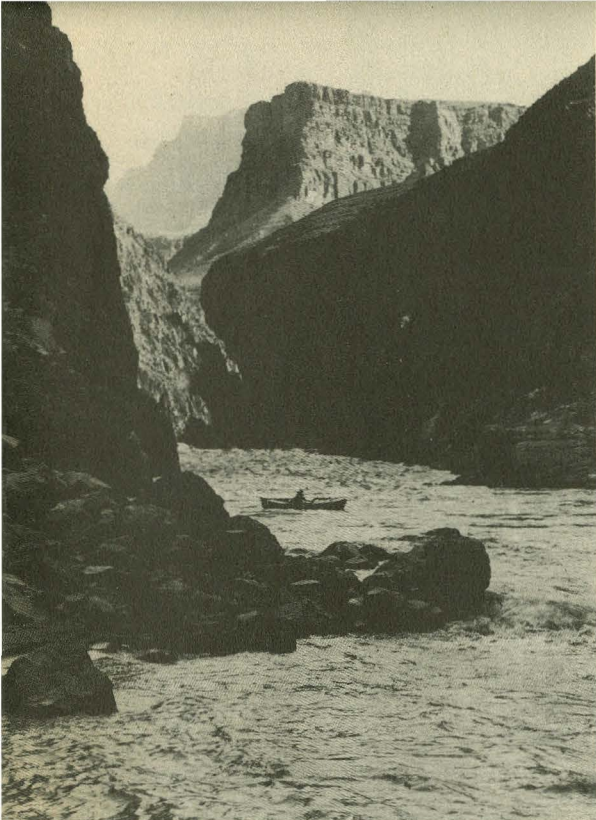
An hour later all is changed. The dark capes are brilliant-hued and well-defined. Scores of new temples have emerged from the purple gloom.

At midday the opposite walls have flattened and the capes and temples have lost their definite shadows. But as the afternoon wears on the spectacles of the morning creep back, now reversed and strangely altered in outline.

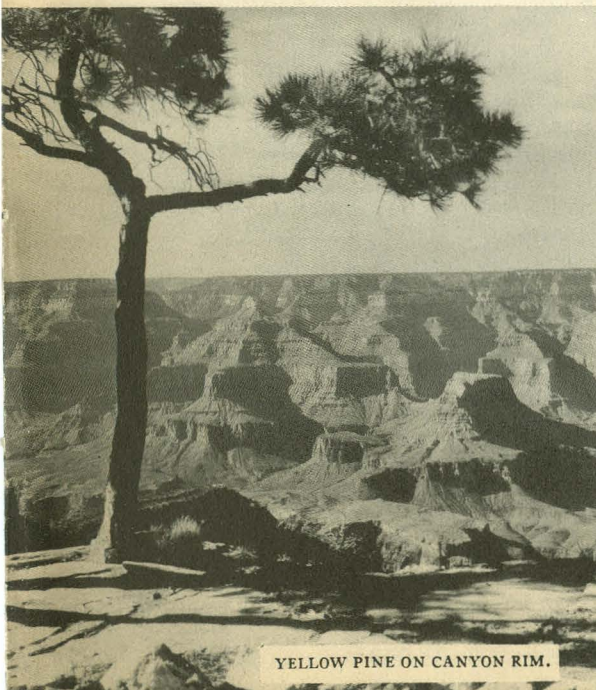
Just after sunset, the reds deepen to dim purples and the grays and yellows and greens change to magical blues.

Then night falls, and in the dark the Canyon suggests unimaginable mysteries. But should there be a moon, the outlines of the great abyss revive in silver light, a thousand spectral forms projected from inscrutable gloom.

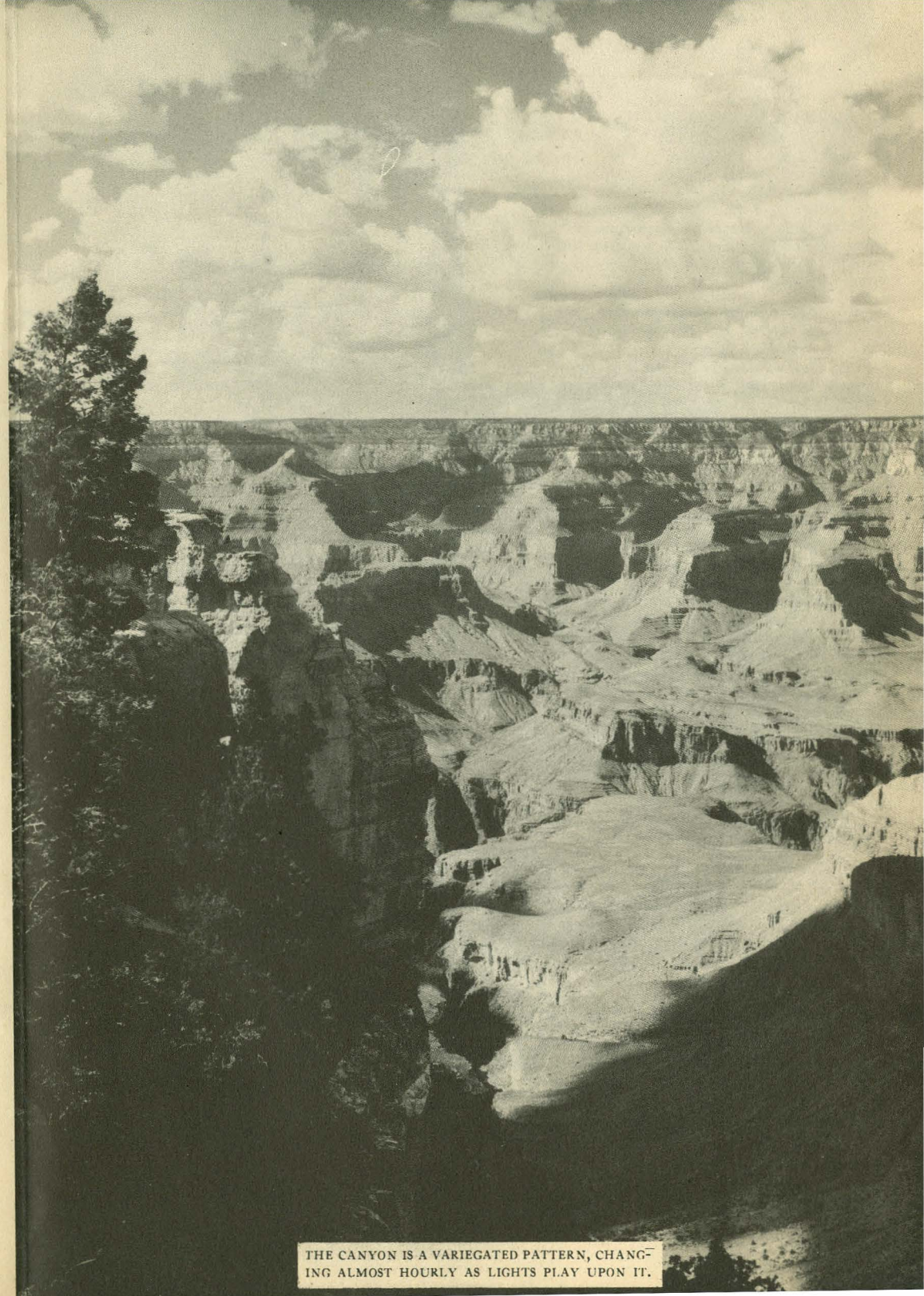
The most picturesque section of the Grand Canyon, the first 105 miles west of Marble Canyon, is within the boundaries of Grand Canyon National Park. The park area is 1,008 square miles in extent. Beyond its eastern boundary lies the Painted Desert. Its western boundary includes Havasu Canyon, in whose depths live the Havasupai Indians. West of the park is Grand Canyon National Monument, which includes Toroweap Point, affording a remarkable view of the inner gorge of the Colorado River.



THE COLORADO IS THE SECOND LONGEST RIVER IN THE UNITED STATES. EVERY 24 HOURS IT CARRIES NEARLY A MILLION TONS OF SAND AND SILT PAST ANY POINT IN THE GRAND CANYON.



YELLOW PINE ON CANYON RIM.



THE CANYON IS A VARIEGATED PATTERN, CHANGING ALMOST HOURLY AS LIGHTS PLAY UPON IT.

UNTOLD AGES IN THE MAKING

THE story of the Grand Canyon is a story of hundreds of millions of years of earth making, a tale involving formation of high mountain ranges, the existence of great inland seas, and the tremendous erosive action of a turbulent river.

The beginning of the Grand Canyon history dates back to a time when, so far as is known, no life existed in the world. The flat-topped plateau of today did not exist then, but in its place was a great mountain mass which probably contained lofty snow-covered peaks similar to those seen in Rocky Mountain or Glacier National Parks.

After innumerable ages, these mountains were worn to a nearly level plain. This cycle of uplift and erosion was repeated and then the area, in common with most of North America, was flooded by the sea. The mud and sand which were washed into this sea slowly hardened to form the layers of rock which make up the upper gorge of the Canyon. Fossils of shells, corals, sponges, fishes, and similar marine forms are found in the rock walls and are evidence not only of the existence of these ancient seas but of the enormous passage of time since the first mountains, devoid of life, were worn away.

As time went on, the sea became shallow and tidal flats and sand beaches replaced the ocean depths. Tracks of the creatures which frequented the shore were impressed in the mud and have been preserved in the rocks formed from these sediments.

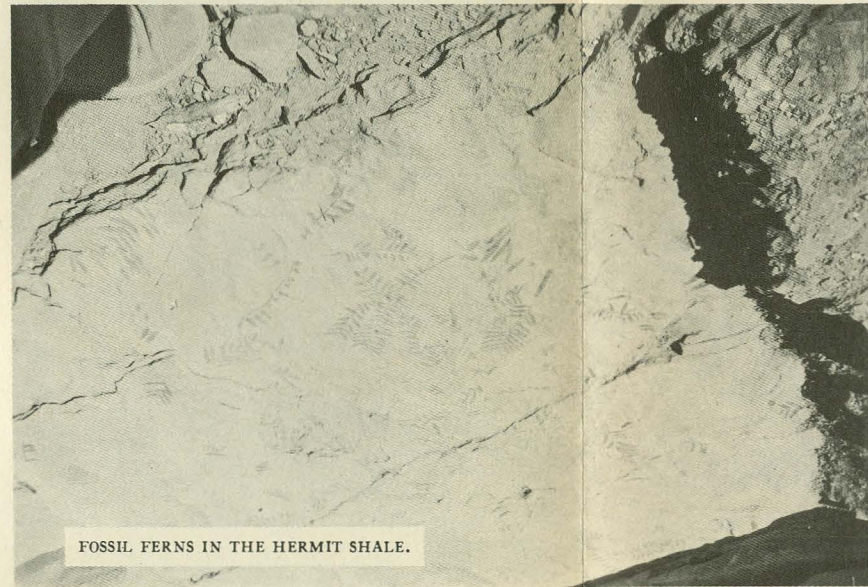
Finally, there occurred a slow arching of the earth's crust which raised the area several thousand feet above the sea and created the high plateau through which the Canyon was later cut. This Canyon is probably the world's most spectacular illustration of river erosion.

The work of cutting this tremendous chasm is not yet finished. The powerful forces of the rushing torrent, the intermittent rain and snow and frost are still at work deepening and widening this wonderful example of earth sculpture.

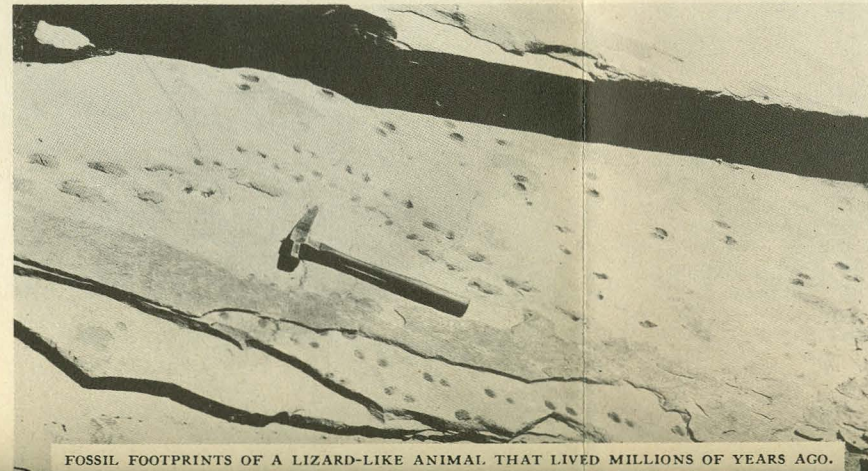
The story of trips by boat down this turbulent stream is told daily at Kolb's Studio on the South Rim.



RANGER NATURALIST EXPLAINING TO VISITORS AT YAVAPAI OBSERVATION STATION THE ORIGIN, HISTORY, AND PLANT LIFE OF THE GRAND CANYON REGION.



FOSSIL FERNS IN THE HERMIT SHALE.



FOSSIL FOOTPRINTS OF A LIZARD-LIKE ANIMAL THAT LIVED MILLIONS OF YEARS AGO.



MYRIADS OF COLORFUL FORMATIONS CARVED BY NATURE ARE VIEWED FROM THE RIMS OF THE CANYON.

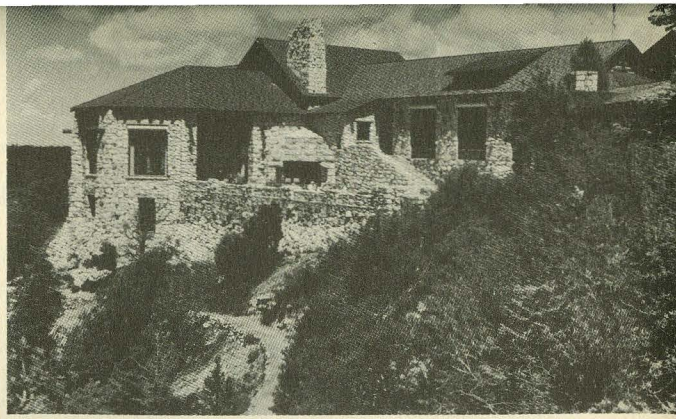
ON THE NORTH RIM

OPEN SUMMER SEASON ONLY

SOME of the most spectacular views of the Canyon are from the North Rim, about 1,200 feet higher than the South Rim.

The Lodge, de luxe and housekeeping cabins, and free public campgrounds afford picturesque living accommodations at a wide price range, from \$2 per day for cabins to \$8.25 per day, European plan, for three in a de luxe sleeping cabin.

The Lodge is operated from May 30 to September 25. After that date, and until weather conditions prevent travel, the cafeteria and housekeeping cabins are open.



GRAND CANYON LODGE ON BRIGHT ANGEL POINT COMMANDS SUPERB VIEWS OF GRAND CANYON. ALL MODERN HOTEL FACILITIES ARE PROVIDED, WITH SLEEPING CABINS GROUPED AMONG THE TREES.

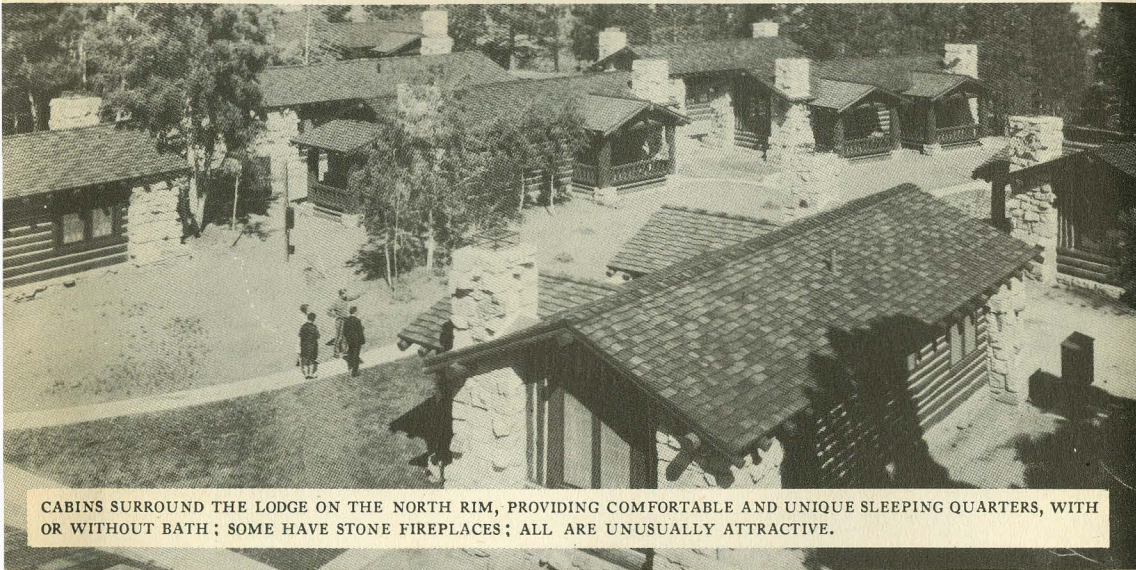


BUSES STOP AT YAVAPAI POINT TO LET VISITORS VIEW THE ENORMOUS ABYSS.

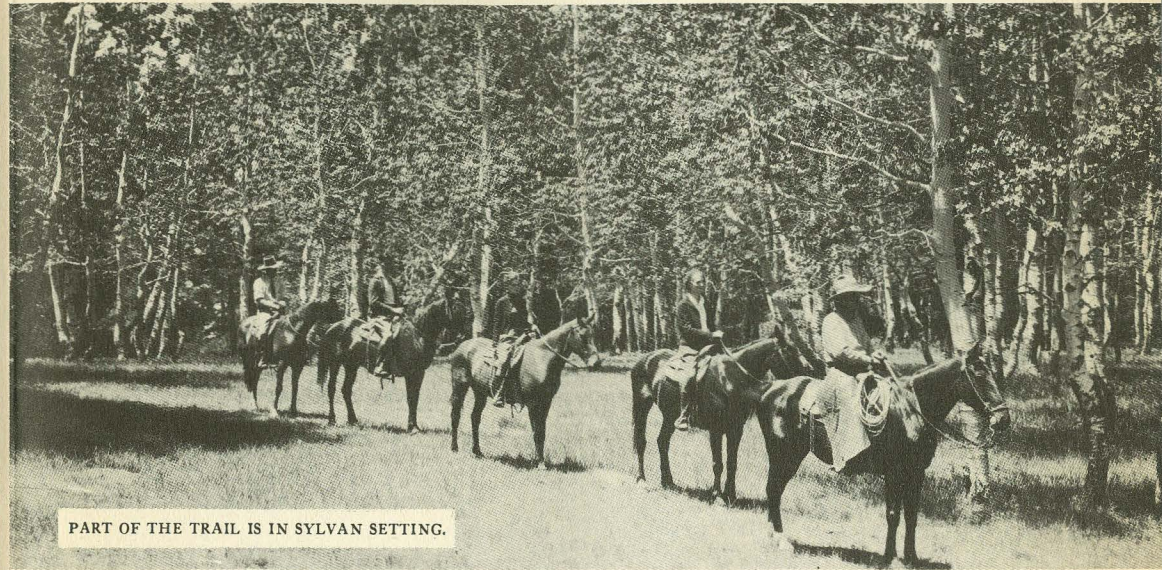
AROUND THE RIMS

THE immensity of the Canyon can best be realized by drives along the Rims. From Grand Canyon Village fine roads lead to Hermit Rest and Desert View. On the North Rim automobile trips to Point Imperial and Cape Royal and to Point Sublime reward visitors with unsurpassed views.

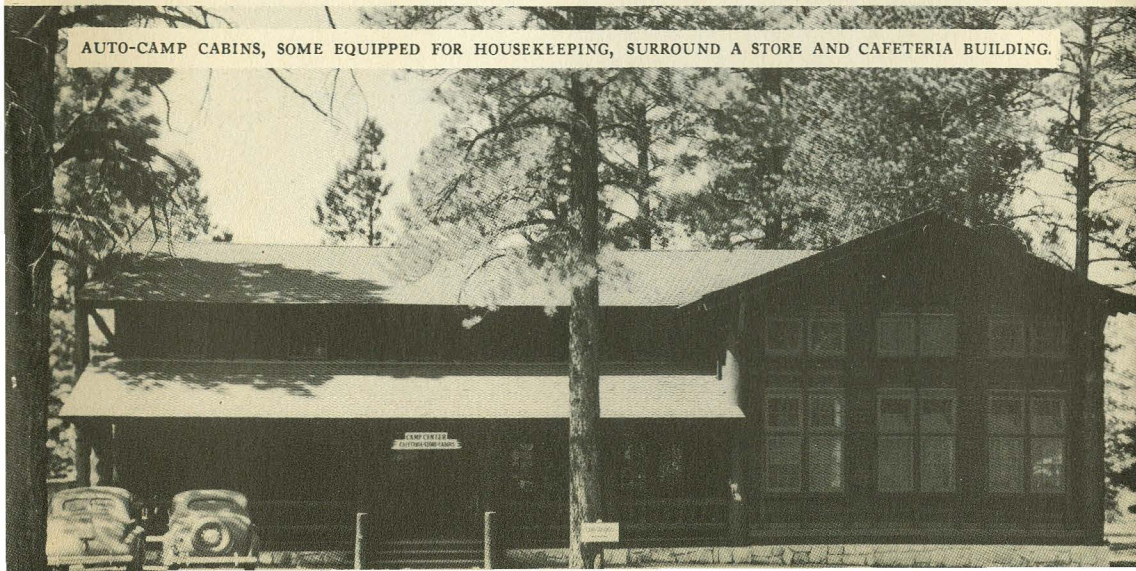
Modern, comfortable motorbuses are available to take visitors along



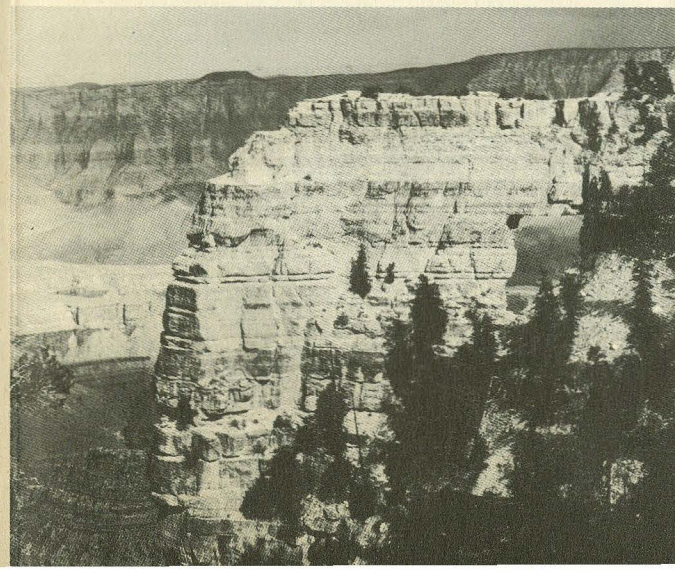
CABINS SURROUND THE LODGE ON THE NORTH RIM, PROVIDING COMFORTABLE AND UNIQUE SLEEPING QUARTERS, WITH OR WITHOUT BATH; SOME HAVE STONE FIREPLACES; ALL ARE UNUSUALLY ATTRACTIVE.



PART OF THE TRAIL IS IN SYLVAN SETTING.



AUTO-CAMP CABINS, SOME EQUIPPED FOR HOUSEKEEPING, SURROUND A STORE AND CAFETERIA BUILDING.

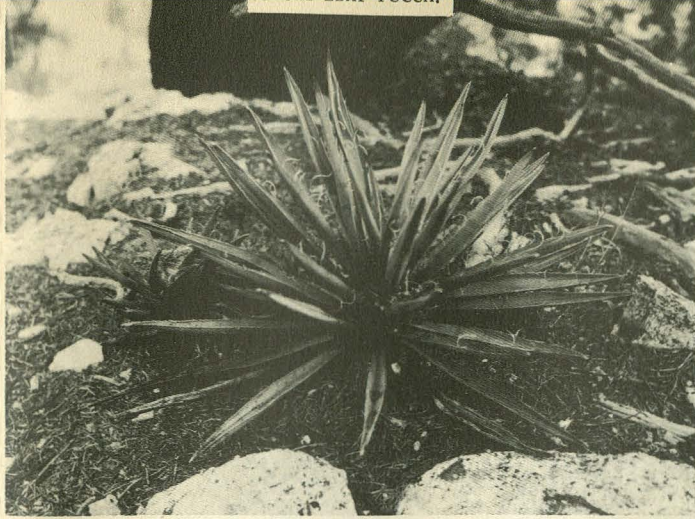


the rim drives on regularly scheduled trips and to the surrounding country.

Ranger naturalists explain the story of Grand Canyon to groups and daily lead a caravan of motorists driving their own cars.

ANGELS WINDOW, ON THE NORTH RIM, OFFERS A SUPERB VIEW OF THE GRAND CANYON.

ANGEL OR KAIBAB TRAIL, LEADING TO THE TURBULENT COLORADO RIVER, ARE THE FAMOUS SUSPENSION BRIDGE, BEAUTIFUL WATERFALLS IN THE SIDE CANYONS, AND PHANTOM RANCH.



FLORA AND FAUNA OF THE CANYON

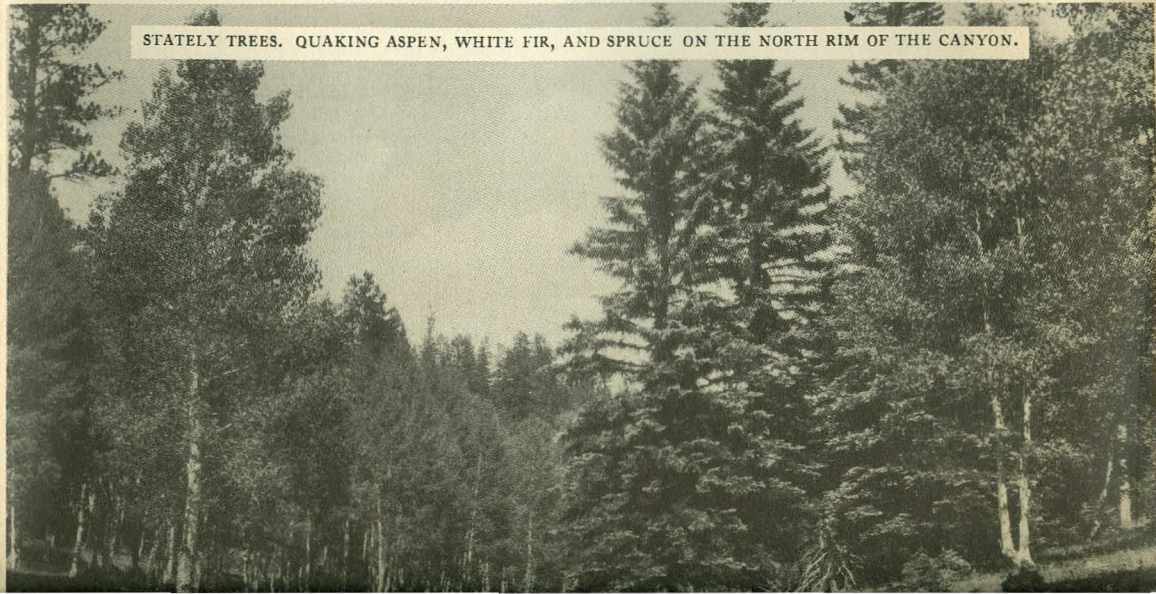
THE Grand Canyon region has a wide range of plant and animal life. On the North Rim is the Kaibab squirrel, found nowhere else in the world, and on the South Rim there are Abert squirrels. In addition, there are mule deer, mountain sheep, antelope, and other animals. Around the rim and within the Canyon are many varieties of wild flowers. Forests of aspen, spruce, pine, and other trees are adjacent to the park and within its borders on the rims.

MULE DEER ON THE NORTH RIM. THEY ALSO ARE FOUND ON THE SOUTH RIM, WHERE THEY WERE TRANSPORTED FROM THE NORTH RIM BY AIRPLANE AND AUTO TRUCK.

KAIBAB SQUIRREL, A SPECIES FOUND ONLY ON THE NORTH RIM.



STATELY TREES. QUAKING ASPEN, WHITE FIR, AND SPRUCE ON THE NORTH RIM OF THE CANYON.



ON THE SOUTH RIM

OPEN ALL YEAR

There is a pleasing air of western informality in the hotel, cabin, and camp life, and in the facilities for viewing the wonders of the Canyon. Costs are reasonable, prices ranging from \$1.25 per day for an auto-camp cabin to \$11.50 and up per day, American plan, for two persons in a room with bath at El Tovar Hotel.



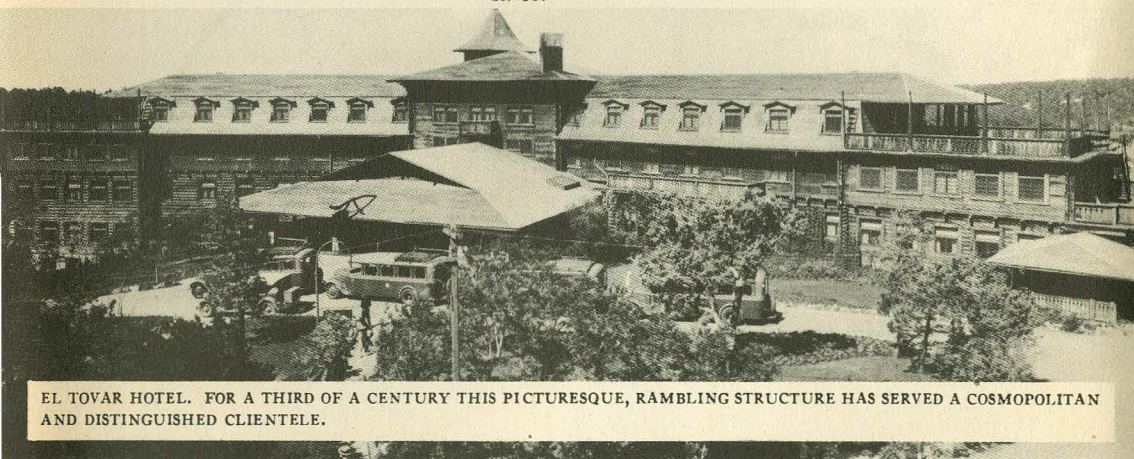
A HORSEBACK PARTY PAUSES ON THE CANYON RIM TO STUDY THE CONSTANTLY CHANGING SCENE BEFORE THEM. AN INTERESTING ONE-DAY TRIP IS MADE TO DRIPPING SPRINGS ON HORSEBACK. THE ROUTE FOLLOWS THE WEST RIM DRIVE, AND THE RETURN TRIP IS MADE THROUGH THE FOREST.



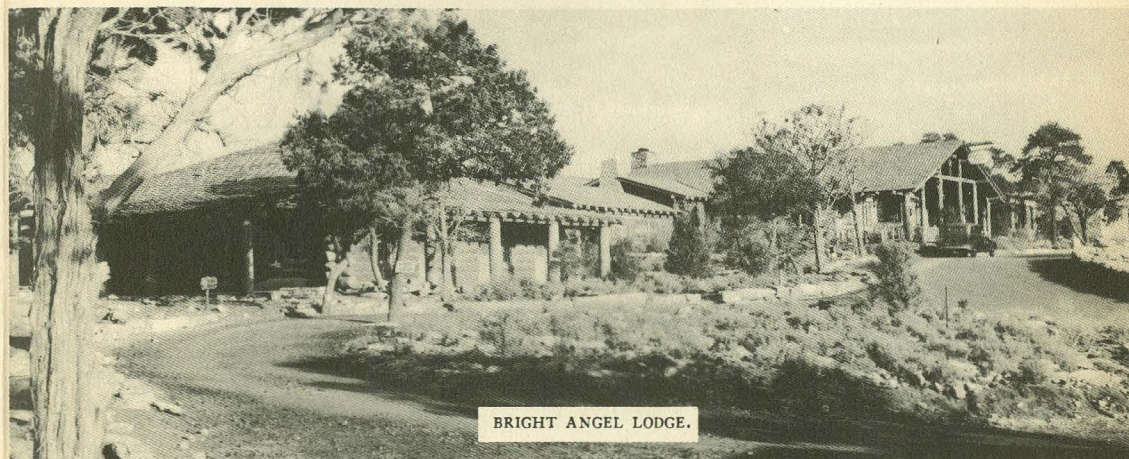
COMFORTABLE ACCOMMODATIONS FOR MORE THAN 200 PERSONS ARE AVAILABLE IN LODGES AND CABINS SURROUNDING THE CENTRAL BUILDING OF BRIGHT ANGEL LODGE. THE COFFEE SHOP IS WELL KNOWN IN THE SOUTHWEST FOR ITS EXCELLENT CUISINE.

BRIGHT ANGEL LODGE AND CABINS

A charming village of log, stone, and adobe on the South Rim of the Canyon. Living quarters are unpretentious, informal, and comfortable. Free public campgrounds are nearby.



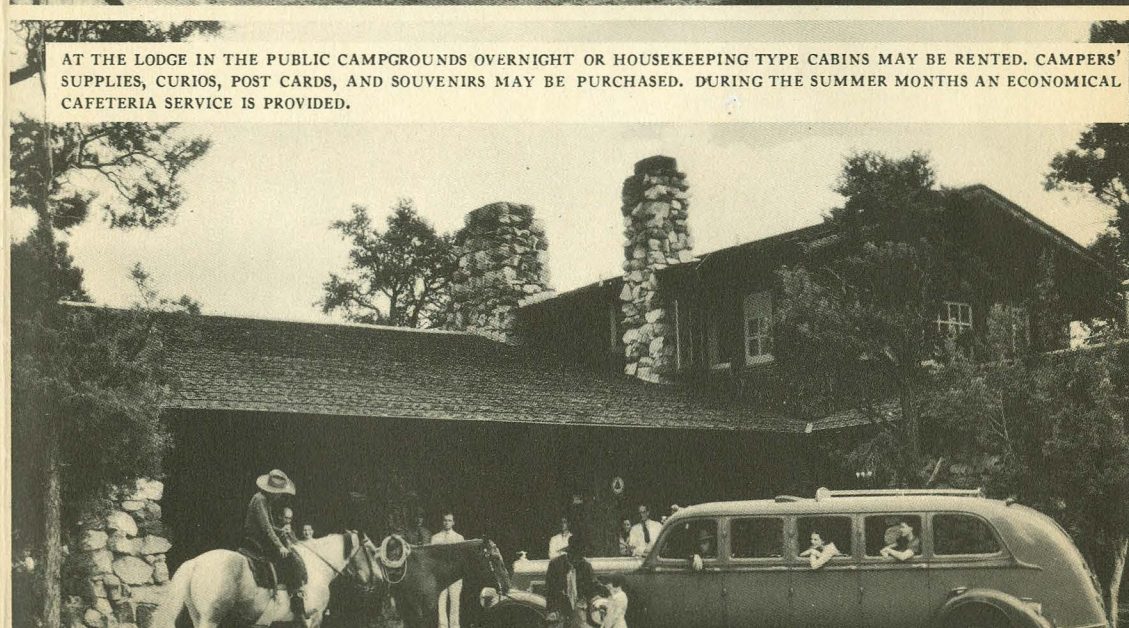
EL TOVAR HOTEL. FOR A THIRD OF A CENTURY THIS PICTURESQUE, RAMBLING STRUCTURE HAS SERVED A COSMOPOLITAN AND DISTINGUISHED CLIENTELE.



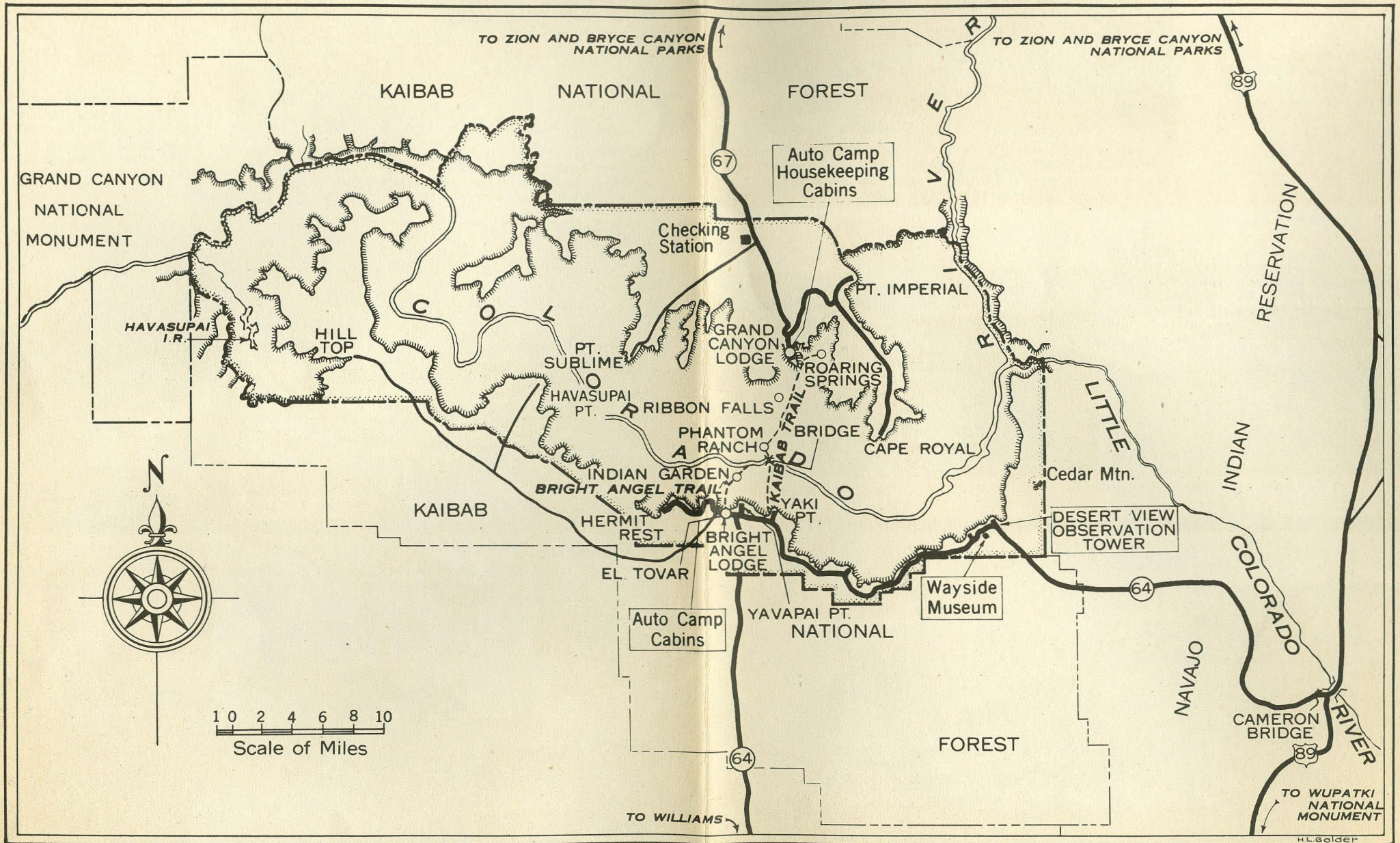
BRIGHT ANGEL LODGE.



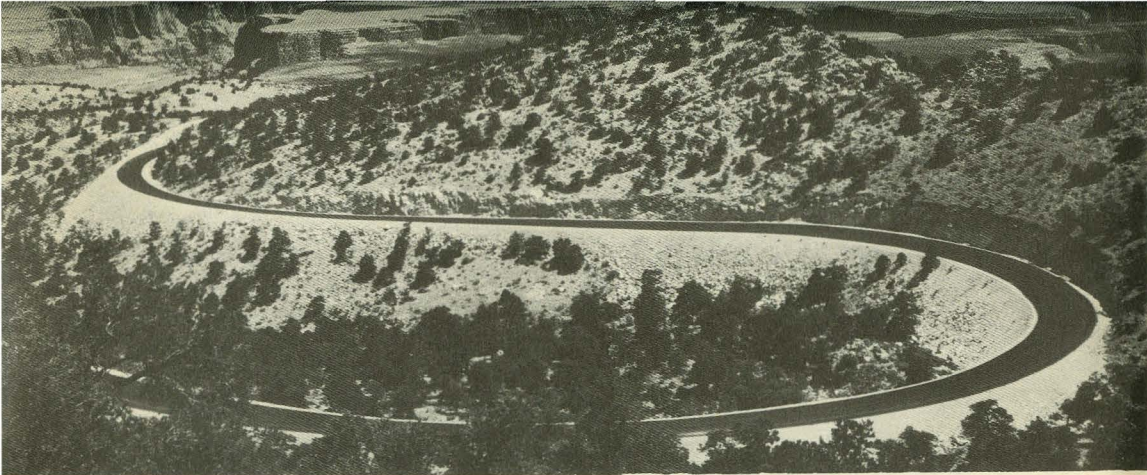
HOPi HOUSE, NEAR EL TOVAR HOTEL AND BRIGHT ANGEL LODGE, GIVES VISITORS AN INTERESTING GLIMPSE OF NATIVE INDIAN LIFE. INDIAN HANDICRAFT IS SOLD HERE.



AT THE LODGE IN THE PUBLIC CAMPGROUNDS OVERNIGHT OR HOUSEKEEPING TYPE CABINS MAY BE RENTED. CAMPERS' SUPPLIES, CURIOS, POST CARDS, AND SOUVENIRS MAY BE PURCHASED. DURING THE SUMMER MONTHS AN ECONOMICAL CAFETERIA SERVICE IS PROVIDED.



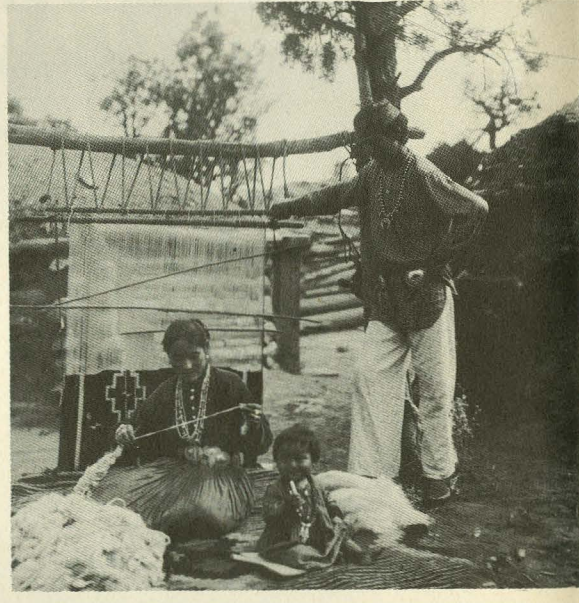
MAP OF GRAND CANYON NATIONAL PARK, SHOWING APPROACH ROADS



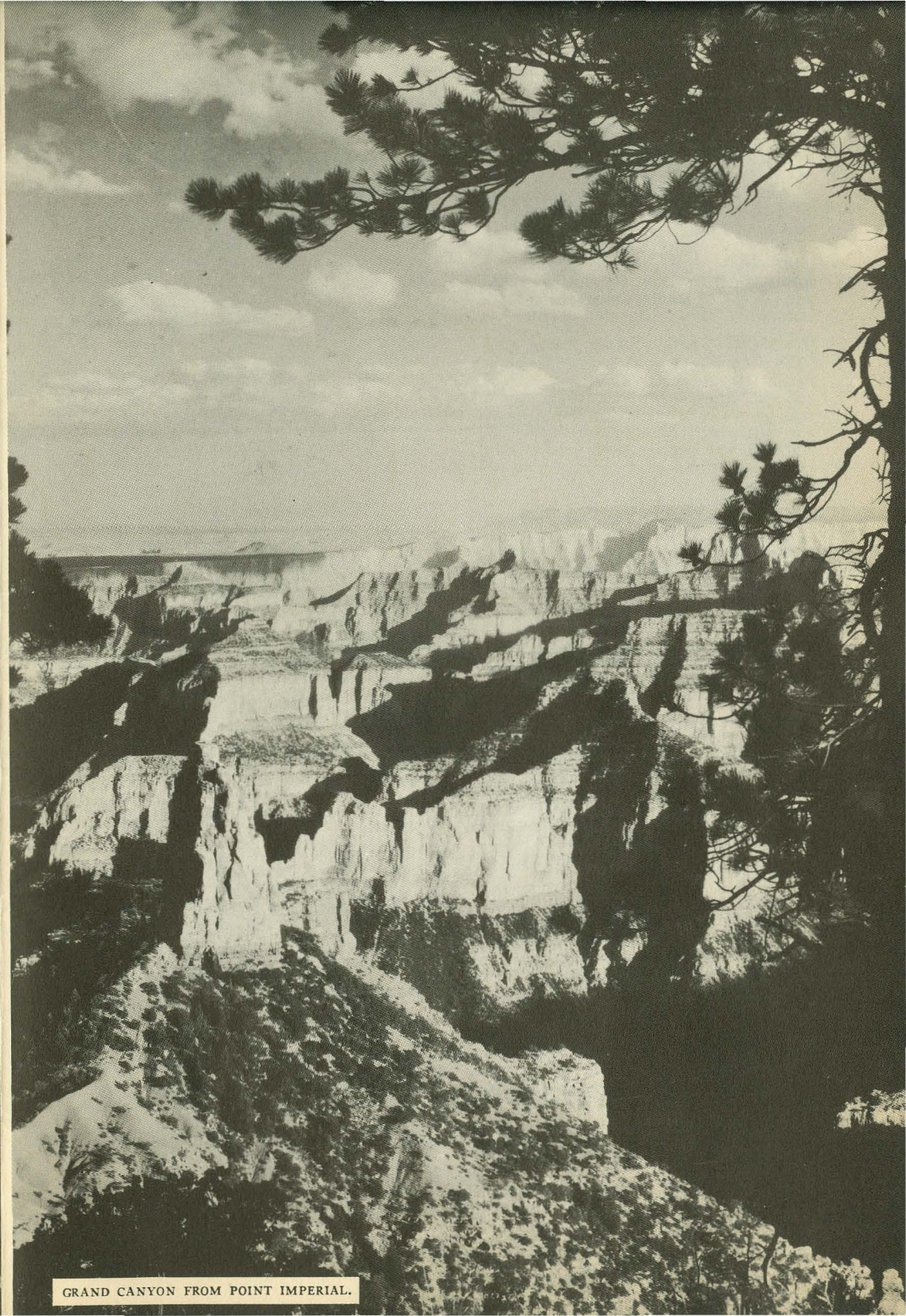
NAVAHOPI ROAD, WINDING THROUGH THE PAINTED DESERT, AND LEADING TO THE NAVAJO AND HOPI INDIAN COUNTRY AND THE MANY POINTS OF INTEREST EAST AND NORTH OF THE GRAND CANYON. THIS ROAD CONNECTS WITH HIGHWAYS LEADING TO THE NORTH RIM. ON THE NORTH RIM IS THE KAIBAB NATIONAL FOREST, WITH ITS WILDLIFE AND NUMEROUS BRIDLE PATHS.

THE REGION ROUND- ABOUT

INDIAN FAMILY ON THE NAVAJO INDIAN RESERVATION EAST OF THE CANYON. NAVAJO WOMAN SHOWN SPINNING WOOL FOR BLANKET.



SAN FRANCISCO PEAKS ARE VISIBLE FROM THE GRAND CANYON AND MAY BE SEEN FROM THE DESERT VIEW DRIVE.



GRAND CANYON FROM POINT IMPERIAL.

How to get to GRAND CANYON NATIONAL PARK

BY AUTOMOBILE

TO SOUTH RIM.—State Route 64 leads from U. S. Highway 66, main east and west highway through northern Arizona, to park headquarters at Grand Canyon Village. The Navahopi Road, recently constructed from Desert View, east entrance to the park, connects with U. S. Highway 89 a mile and a half south of Cameron, Ariz. U. S. Highways 66 and 89 connect Cameron and Flagstaff, Ariz. These roads are open all year.

TO NORTH RIM.—From Cedar City, Utah, U. S. Highway 91 leads to Zion National Park. From Zion a new road extends via Pine Creek to Mount Carmel, passing through a mile of tunnels in Zion Canyon, and connecting at Mount Carmel with U. S. Highway 89 extending northward toward Bryce Canyon National Park and southward via Kanab, Utah, and Fredonia, Ariz., to the Grand Canyon. Another good road from Cedar City leads over Cedar Mountain via Cedar Breaks to Cedar Junction and the Grand Canyon rim. Roads to the North Rim are closed from October 15 to May 15.

BY AIRPLANE

TO SOUTH RIM.—Transcontinental and Western Air (TWA) routes its daylight flights over Grand Canyon, and the Grand Canyon Airport is a flag stop for certain of these flights. United Air Lines and Western Air Express deliver passengers at Las Vegas, Nev., American Airlines at Phoenix, Ariz., TWA at Winslow, Ariz., from where the trip to the park is made by charter arrangements with Grand Canyon Airlines. Grand Canyon Airlines maintains an airport approximately 18 miles from the South Rim. Hangar space and service for visiting planes are available.

TO NORTH RIM.—The North Rim landing field is located at DeMotte Park (VT), 18 miles from Grand Canyon Lodge. From this airport scheduled trans-Canyon service is maintained throughout the summer season by Grand Canyon Airlines.

BY RAILROAD

TO SOUTH RIM.—A branch line of the Atchison, Topeka & Santa Fe Railway runs from Williams, Ariz., direct to the park. On certain trains, through Pullmans are operated directly to Grand Canyon. For other trains regular and frequent motor-stage service is maintained between Williams and Grand Canyon.

TO NORTH RIM.—The Union Pacific System delivers its passengers at Cedar City, from where the Utah Parks Co. operates regular motor-stage service to the Canyon's North Rim. Visitors to the Grand Canyon from either of these Utah points may make an interesting trip covering Bryce Canyon National Park, Cedar Breaks National Monument, and Zion National Park.

BY BUS

TO SOUTH RIM.—Transcontinental buses of the Pacific Greyhound Lines and the Santa Fe Trails System go to both Flagstaff and Williams, Ariz. The Navahopi Tours operates between Flagstaff and the south entrance to the park. The Fred Harvey Line has service between Williams and the park.

TO NORTH RIM.—The Burlington Transportation Co. and the Interstate Transit Lines serve Cedar City from Salt Lake City and Los Angeles. In addition, the Santa Fe Trails System delivers passengers from Salt Lake City at Jacob Lake, Ariz., where transportation to the park is available. The Utah Parks Co. buses provide service from Cedar City to the park.

FOR FURTHER INFORMATION

Any travel bureau, railroad, bus line, airline ticket office, or local automobile club can furnish information concerning Grand Canyon National Park. Write to the Superintendent, Grand Canyon National Park, Grand Canyon, Ariz., or the Director, National Park Service, United States Department of the Interior, Washington, D. C., for detailed information.



UNITED STATES DEPARTMENT OF
THE INTERIOR • Harold L. Ickes, Secretary
NATIONAL PARK SERVICE • Newton B. Drury, Director