

# South Rim

GRAND CANYON NATIONAL PARK • ARIZONA



*On the northern part of the Coconino Plateau, some 7,000 feet above sea level, the pine-forested South Rim looks across the mile-deep, 217-mile-long canyon to the higher North Rim—9 miles across by line of sight and 214 miles by road.*

---

From Grand Canyon Village, center of South Rim activities, roads stretch east and west along the rim, and trails follow the rim and go down into the canyon.

## SEASONS

As roads on the South Rim remain open all year, you can enjoy the canyon in any season.

Spring is sometimes punctuated by cold snaps. From June into September, temperatures range from the midforties at night to the mideighties in the daytime; relative humidity is generally low. It seldom rains in June, but brief thunderstorms are frequent in July and August. In the canyon, midsummer temperatures reach 100° to 120°.

Autumn, a short season here, is followed by the crisp, clear days of winter. Snow may first fall in October or November. From November to April, temperatures are likely to drop below freezing at night, but by day the forties and fifties are the rule.

## HOW TO REACH THE SOUTH RIM

U.S. 66 crosses northern Arizona through Williams and Flagstaff. The Grand Canyon is less than a 2-hour drive from either city over a paved road. U.S. 89, a major north-south highway 32 miles east of the Grand Canyon, passes through Cameron. An all-weather scenic road from Cameron (Ariz. 64) enters the park near Desert View.

Airlines, buslines, and a railroad serve Williams and Flagstaff, both of which have bus service to Grand Canyon Village.

Airlines serve the park directly by means of an airport south of the park. Bus service is available for passengers going to and from the airport.

## ACCOMMODATIONS AND SERVICES

*Campgrounds* with tables and fireplaces are maintained at the village and at Desert View. Firewood can be purchased from a concessioner, and water and comfort stations are nearby. Camping, permitted only in designated campsites, is limited to 14 days. Dispose of all burnable rubbish in your campfire, which must be built in a designated area; put other refuse in trash cans. Before leaving your camp, be sure your campfire is thoroughly extinguished.

*Trailer Village*, near the visitor center, has utility hookups.

*Hotel facilities.* For rates and reservations, write to Fred Harvey, Inc., Grand Canyon, AZ 86023.

*Grand Canyon Hospital* is on Center Road.

A *post office* is in Grand Canyon Village. Mailing address: Grand Canyon, AZ 86023.

*General Services* include a bank, service station, garage, and a general store. Laundry and showers are also available.

*Church services* are conducted on Sundays all year. Services include Protestant, Latter-Day Saints, and Roman Catholic. Complete information as to times and place is posted at the Shrine of the Ages Chapel and other locations throughout the park.

*Telephones* are available at the hotel, lodges, visitor center, and campground, and adjacent to the general store, with service to the North Rim and Phantom Ranch.

A *movie and slide program* of the early Colorado River exploration is shown daily at the Kolb Studio, west of Bright Angel Lodge. This is a concessioner service for which there is a small charge.

*Picnic areas* are available in the village, at Desert View, and at designated spots along most roads.

## THE NATURALIST PROGRAM

*Park headquarters and visitor center* is in the eastern section of the village. Exhibits describe the geology, biology, prehistory, and history of the canyon.

*Yavapai Museum*, on the rim, 1 mile from the visitor center, features naturalist's talks, geological exhibits, and binocular views of Grand Canyon.

*Tusayan Ruin and Museum* on the East Rim Drive, contains exhibits about the early human history of the canyon area and the ruins of Tusayan pueblo, built about 1185. The museum is open only in summer.

*Illustrated talks* are given every summer evening at the amphitheater near the visitor center. They deal with human history, natural history, geology, and the seasons.

See bulletin boards for schedules.

## GUIDE TO THE SOUTH RIM

*West Rim Drive* leads 8 miles from the village to Hermits Rest, passing excellent lookouts on the way. It is particularly enjoyable at dusk, for the sunsets from Hopi Point are famous. Buses tour this drive in the morning.

*East Rim Drive* leads 25 miles from the village to Desert View, where the Watchtower perches on the rim. On the way, stop at Lipan Point, which many people think offers the most exciting view of all. The visitor center, Yavapai Museum, and Tusayan Museum are also on this drive. Buses tour this drive in the afternoon.

Park roads are not high-speed highways. They were designed for leisurely enjoyment of the park scenery. Maximum speed allowed is 45 m.p.h. Inquire at ranger station before using primitive roads.

*West Rim Trail*, an easy walk, follows the edge of the canyon for 1 mile from the hotel to Maricopa Point.

*Canyon Rim Nature Trail*, 1½ miles long, leads from the hotel to the visitor center and Yavapai Museum. Part of this trail, from the visitor center to the hotel, is self-guiding.

*Horseback Trips*, available in the summer season only, take you through the pine forests that cover the South Rim.



## THINGS YOU SHOULD KNOW

Regulations designed to protect national parks and monuments do not allow removing, defacing, or destroying any rock, fossil, or plant; or hunting, disturbing, or feeding any form of wildlife.

*Firearms* must be sealed or cased.

*Pets* must be leashed or otherwise physically controlled at all times. They are not allowed on park trails.

*Water* is a limited resource—help us conserve it.

*Fishing* in park streams requires a valid Arizona license.

*Littering* is subject to fine.

Complete regulations and information are available at ranger stations. If you are in doubt, please inquire.

## VISITING THE HAVASUPAI

A trip to the Havasupai Reservation in Havasu Canyon, deep in the westernmost end of the park, is a rugged but memorable experience. Reservations must be made by telephoning or writing the Tourist Manager, Havasupai Tourist Enterprise, Supai, AZ 86435. If requested, he will send someone to meet you at Hualapai Hilltop for the trip into the canyon.

It is 191 miles by car from Grand Canyon Village to Hualapai Hilltop, via Ariz. 64 to Williams, west on U.S. 66 to Peach Springs, and then north on an unpaved road. These last 30 miles are rough, but passable. Leaving your automobile at the rim, you ride an Indian pony or hike the 8 miles to Supai.

The Supai serve no meals. You must be prepared to camp or to cook your own food at the tourist lodge or the dormitory, which are operated by the Havasupai Tribal Council. Some groceries can be purchased in the tribal store.

A fee is charged if you hike into the reservation. Camping is free in the National Park Service campground; but no firewood is available—you must furnish your own fuel and stove. Load limit for packhorses is 150 pounds.

## DOWN INTO THE CANYON

### By Muleback

One way to see the river is to take the mule trip and view the canyon from below. You should reserve a mule before you get to the park. (Write to: Fred Harvey, Inc., Grand Canyon, AZ 86023.)

Persons weighing more than 200 pounds and children under 12 years of age are not permitted to take the mule trips.

A word of reassurance about the mules. Before they are allowed to carry people, they undergo a long apprenticeship. The wrangler in charge considers each party member before he assigns him a mule, and he places the animal in the string with great care.

### On Foot

Going on foot can be rugged. Unless you are very certain of your stamina, do not hike to the river. A

canyon trip is the reverse of mountain climbing; the uphill grind (an ascent of nearly 5,000 feet) comes at the end, not at the beginning when you are fresh. Therefore, allow yourself plenty of time. Carry an adequate supply of water; 1 gallon a day per person is recommended. Wear a hat and a long-sleeved shirt. Since canyon temperatures may rise as high as 120°, heat exhaustion is common. You are cautioned to obtain the *Hiker Information Bulletin* at any ranger station before a canyon hike. Hiking conditions are best in spring and autumn when weather is mild on the rims and within the canyon. Anyone planning to use trails not described in this folder must get a permit from the district ranger's office.

*Bright Angel Trail* follows a twisting 8-mile course from the South Rim to the river. The 9-mile round trip to Indian Gardens is a good day's hike for the sturdiest. Water is available in summer only at two points between the South Rim and Indian Gardens. From there to the river, the hottest part of the trip, none is available.

*River Trail*, 2 miles long, connects Bright Angel and Kaibab Trails.

*South Kaibab Trail* leads 7 miles to the river from the rim at Yaki Point. The hike to Cedar Ridge, 1½ miles down the trail, is a good ½-day outing. No water is available. Hikers can be accommodated at Phantom Ranch with reservations.

*North Kaibab Trail*, which joins the South Kaibab Trail at the river, completes the cross-canyon link to the North Rim. The trail crosses Bright Angel Creek at many points. There are four campgrounds between Phantom Ranch and North Rim.

*Emergency service.* A guide and mule sent down from either rim costs \$20 to \$40, depending on location.

*Trail telephones*, for emergency use only, are on Bright Angel and Kaibab Trails.

*Camping* below the rims, in designated areas, is a rewarding experience if well planned. Burn your trash and carry out non-burnable materials.

*Trail shortcutting and rock-rolling* are forbidden—they may cause landslides, endangering others as well as yourself. Watch for mule parties, and stand still on *either side of the trail* until they have passed. Wheeled vehicles are not allowed on park trails.

**IN CASE OF ACCIDENT**, notify a park ranger.

## ADMINISTRATION

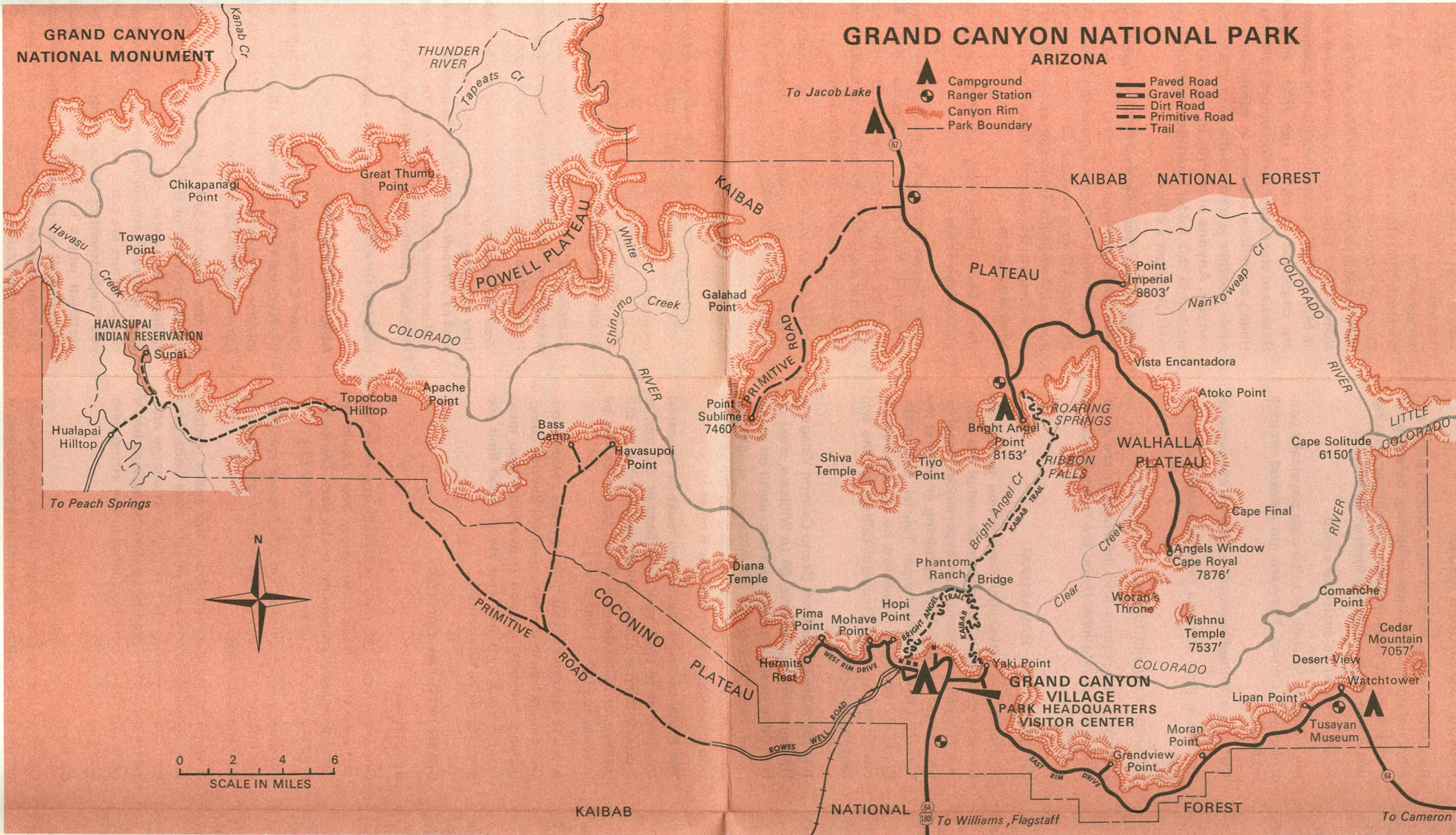
Grand Canyon National Park is administered by the National Park Service, U.S. Department of the Interior. A superintendent, whose address is Grand Canyon, AZ 86023, is in immediate charge.

As the Nation's principal conservation agency, the Department of the Interior has basic responsibilities for water, fish, wildlife, mineral, land, park, and recreational resources. Indian and Territorial affairs are other major concerns of America's "Department of Natural Resources." The Department works to assure the wisest choice in managing all our resources so each will make its full contribution to a better United States—now and in the future.



GRAND CANYON NATIONAL MONUMENT

GRAND CANYON NATIONAL PARK ARIZONA



- Campground
- Ranger Station
- Canyon Rim
- Park Boundary

- Paved Road
- Gravel Road
- Dirt Road
- Primitive Road
- Trail

0 2 4 6  
SCALE IN MILES



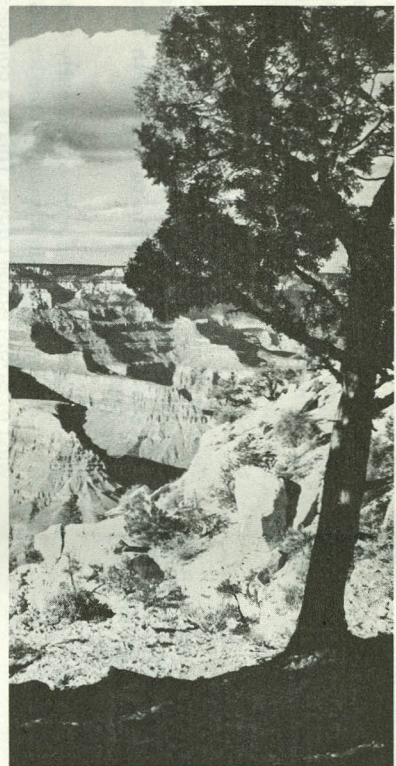
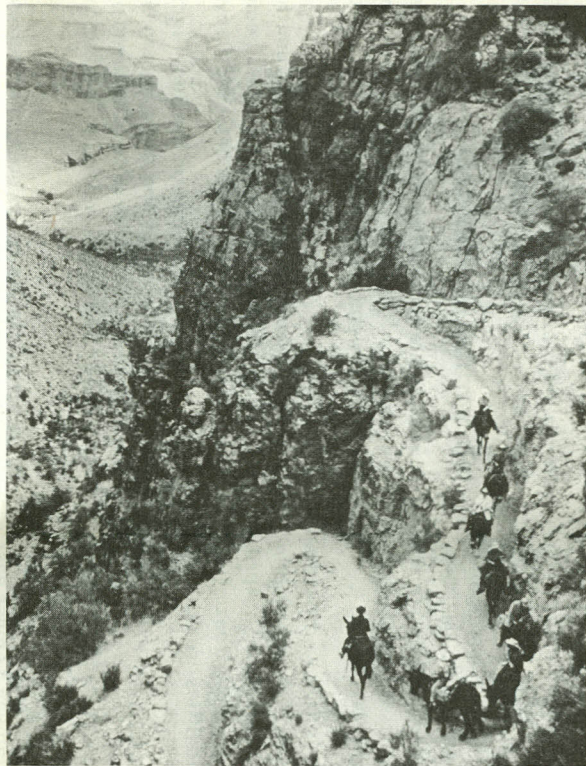
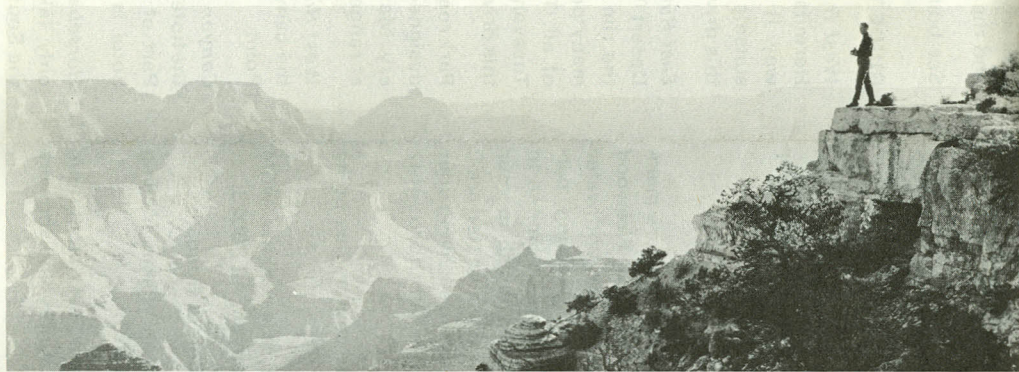
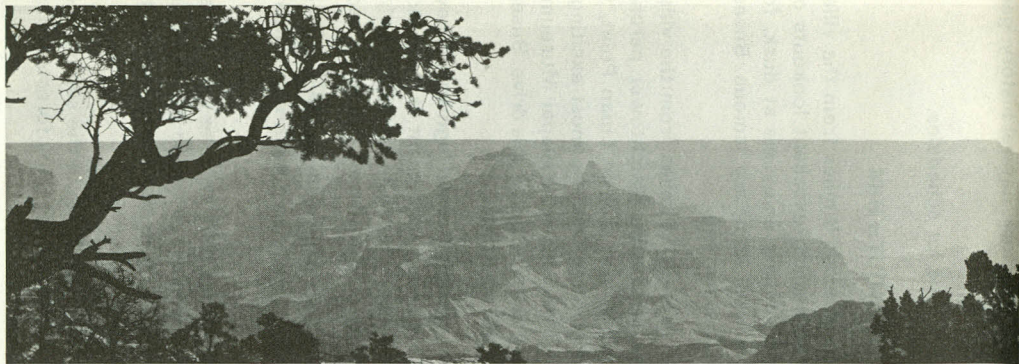
To Jacob Lake

To Peach Springs

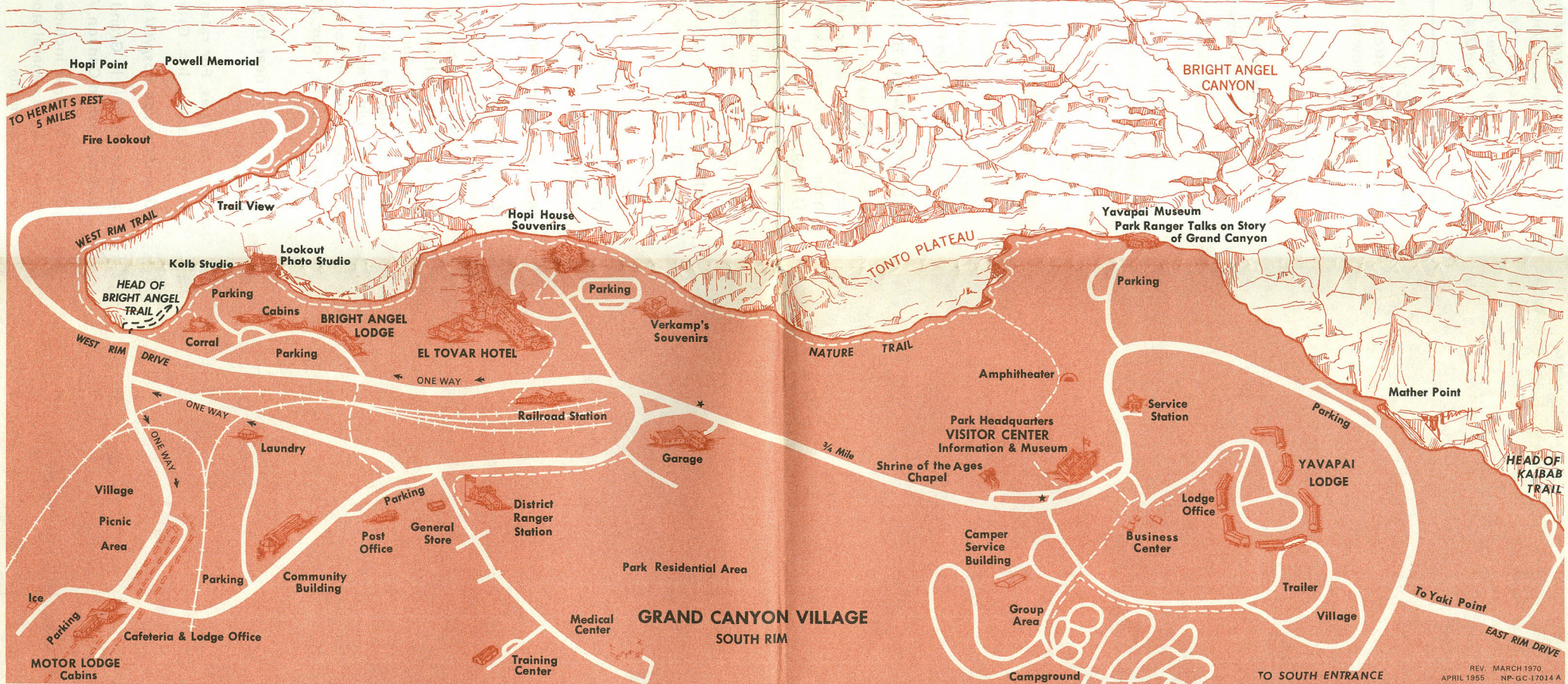
To Williams, Flagstaff

To Cameron









**GRAND CANYON VILLAGE  
SOUTH RIM**

**BRIGHT ANGEL  
CANYON**

**Yavapai Museum  
Park Ranger Talks on Story  
of Grand Canyon**

**TONTO PLATEAU**

**NATURE TRAIL**

**Mather Point**

**HEAD OF  
KAIBAB  
TRAIL**

**YAVAPAI  
LODGE**

**To Yaki Point**

**EAST RIM DRIVE**

**TO SOUTH ENTRANCE**

REV. MARCH 1970  
APRIL 1965 NP-GC-1701A A



☆ U.S. GOVERNMENT PRINTING OFFICE: 1970—392-716/70  
REVISED 1970

**U. S. Department of the Interior**  
**National Park Service**