

## Exhibits

**The Gift Shop in the El Tovar Hotel** contains fine Canyon paintings and photographs as well as a selection of gift items for sale.

**Hopi House**, opposite the El Tovar Hotel. This building is patterned after the terraced dwellings of the Hopi Indians who reside in the Grand Canyon region. It contains one of the finest collections of Southwestern curios and souvenirs in the world.

**Lookout Studio.** Located near Bright Angel Lodge, the Studio provides a free telescope for viewing the Canyon and is an excellent location for picture taking. A lighted rock exhibit displays many of the precious and semi-precious rock formations found in the Southwest.

**Hermit's Rest and the Watchtower at Desert View.** These Eastern and Western terminals of the Grand Canyon Rim Drives provide superior Canyon views. Refreshments are available at both locations. There is a curio shop at Hermit's Rest, and a Trading Post with luncheonette near the Watchtower.

**Visitors Center.** Located in the Yavapai Lodge neighborhood, the Visitors Center houses exhibits and other orientation help provided by the National Park Service.

**Yavapai Museum.** During the Summer months, the National Park Service maintains an observation station at Yavapai Point, one and one half miles east of the El Tovar Hotel. A battery of high-powered binoculars located inside the museum present a unique panorama of the Canyon's history and development, and lectures are given by Park Rangers during the Summer months.

**Illustrated Talks.** Subjects covering the Canyon's natural history, geology, etc. are presented every Summer evening by a Park Ranger at the Amphitheatre behind the Visitors Center.

### Recreation, Entertainment and Services

**Hiking:** Visitors who enjoy hiking will find many interesting footpaths along the Rim and into the Canyon. Box lunches are available at the Bright Angel or the El Tovar. Caution: the temperature in the Canyon is much warmer than on the Rim.

**Cinema:** Recent releases of feature films and selected short subjects are shown twice a week in the Community Building.

**Fishing and Hunting:** Hunting is prohibited in the Park. Fishing in Park streams requires an Arizona license. Details of regulations are available at the Visitors Center.

**Winter Skiing** is available in nearby mountain areas. Ski lift at Arizona Snow Bowl near Flagstaff.

**Church Services:** Roman Catholic, Latter Day Saints, Baptist and interdenominational services are held throughout the year. Inquire at hotels for specific times and locations.

**Camper Service Building:** Offers shower facilities for Campground and Trailer Village guests. Also available are self-service laundry, and packaged ice.

**Barber Shop and Beauty Shop** are located in the Bright Angel Lodge.

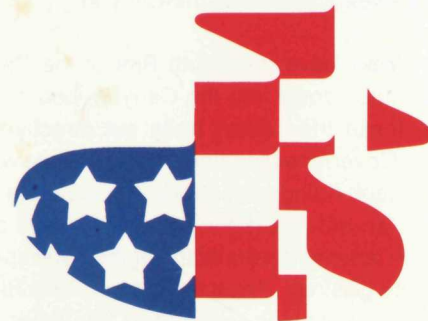
**Chartered Cars and Car Rental.** Chartered Cars (five-passenger) which are chauffeur driven, may be hired for private use on regular or special trips. Fred Harvey also provides Rent-A-Car Service which is available at the Bright Angel Lodge and at Grand Canyon Airport.

**Newsstands** in El Tovar Hotel, Bright Angel Lodge, Motor Lodge and Yavapai Registration area carry extensive stocks of original Indian artifacts, Grand Canyon souvenirs and Southwestern curios.

**First aid services** are available at Grand Canyon Clinic.

**For Hotel and Lodge Reservations** at any of the Grand Canyon's guest facilities please contact your travel agent or the Grand Canyon National Park Lodges Reservations Office at Grand Canyon. Call (602) 638-2401 or write Grand Canyon National Park Lodges Reservations, Grand Canyon, Arizona 86023.

## GrandCanyon NATIONAL PARK LODGES



Hospitality by  an Amfac Company

FH/CHI 300M 2/76

# GRAND CANYON NATIONAL PARK

See your Travel Agent

HOTELS, RESTAURANTS AND ACCOMMODATIONS OPERATED BY FRED HARVEY AN Amfac COMPANY



EL TOVAR HOTEL



THUNDERBIRD LODGE



**Mileage to the South Gate of the Grand Canyon:**

Williams	59	Death Valley	Los Angeles	510
Flagstaff	79	Nat'l. Monument	Salt Lake City	528
Phoenix	221	Sequoia/Kings Canyon	San Diego	614
Las Vegas	282	National Park	Yosemite	
Zion National Park	249	Albuquerque	National Park	748

**Via Auto:** The South Rim of the Grand Canyon is easily reached from East/West Interstate 40, via U.S. Highway 180 from Flagstaff. Or State Highway 64 from Williams, and from North/South U.S. Highway 89 via State Highway 64 from Cameron. All routes are clearly marked on your road map.

**By Air:** The South Rim is accessible via daily Hughes Air West flights from Phoenix, Las Vegas and Salt Lake City. Cochise Airlines also provides daily service from Phoenix and Tucson. Scenic Airlines has daily service from Las Vegas and air taxi service is available from many points throughout the Southwest. All flights land at Grand Canyon Airport, 8 miles from the Grand Canyon. Private aircraft are welcome. Ground transportation services to and from the hotel and motel area meet all regularly scheduled flights for a nominal fee. Taxis and rental cars are available at the airport. Frontier Airlines provides daily flights to nearby Flagstaff.

Continental Trailways and Greyhound buses arrive regularly in both Flagstaff and Williams daily. From either point, Nava-Hopi tour buses continue the trip to Grand Canyon.

## How to get to the Grand Canyon & where to stay.

**El Tovar Hotel**, standing in silhouette at the brink of the Grand Canyon, is one of the great resort hotels in America. The newly renovated El Tovar is spaciouly built of native boulders and rustic pine logs. Wide verandas provide excellent views of the Canyon. For over 71 years, El Tovar has been deservedly known for its unobtrusive hospitality and excellent cuisine. Breakfast, lunch and dinner are served daily in the El Tovar dining room. Your favorite beverages and refreshments are offered in El Tovar's Lounge. A gift shop and newsstand are located within the hotel. Garage, laundry and dry cleaning services are available. A Fred Harvey Transportation and Information Desk is located in the hotel's main lobby for mule trip and bus tour information and reservations.

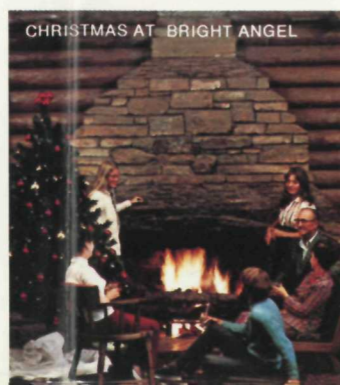


KACHINA LODGE

Arizona Room at Bright Angel offers western dining pleasure. Complete a la carte meals in the Bright Angel Coffee Shop and Snack Bar are moderately priced. Garage, laundry and dry cleaning are available. Fred Harvey Transportation Desk is in the main lobby for mule trip and bus tour information and reservations.

**Thunderbird and Kachina Lodges** command sweeping views of the Grand Canyon and provide comfortable modern accommodations for couples and families. All rooms are individually temperature controlled. Each has bath and shower. Ample parking is provided. Garage, laundry and dry cleaning services are available. Thunderbird Lodge's registration is at Bright Angel Lodge. Registration for the Kachina is at the El Tovar Hotel.

**Bright Angel Lodge and Cabins** offer a wide range of comfortable and moderately priced accommodations. This complex of buildings, stretching along the Canyon Rim, offers a combination of rustic simplicity and modern convenience. Within the Main Lodge at Bright Angel, guests will find a curio-gift shop, newsstand, barber and beauty shops. The



CHRISTMAS AT BRIGHT ANGEL

**Yavapai Lodge**, midway between Yavapai Point and El Tovar, in pine and juniper woodlands offers 358 modern, comfortable accommodations minutes from the



YAVAPAI

Rim. Accommodations are in individual motel structures and lodges. All rooms with bath and shower. Other guest facilities include a restaurant, cafeteria, snack bar, cocktail lounge and curio shop.

**Grand Canyon Motor Lodge** is located a short distance from the Rim. The Motor Lodge motel offers comfortable and reasonable family accommodations. A cafeteria, curio shop and newsstand are in the main lodge.

**Grand Canyon Trailer Village** offers 193 modern sites fully equipped with cold water, electricity and sewage hookups. Visits are restricted to 7 days from May 1 to November 30. The nearby Camper Service building offers showers and laundry facilities.

**Phantom Ranch**, located on Bright Angel Creek near the Canyon Rim, lies almost a mile below the Canyon Rim. Accessible only via hiking and daily mule trains that descend by inner Can-



GUEST ROOM

yon trails, the Ranch offers a grouping of rustic cabins. Phantom Ranch is open year round. Overnight trail trips are available daily. Advance reservations are particularly suggested.

**Day Visitors** to the Grand Canyon are welcome at all the Fred Harvey restaurants, shops and public facilities at the Canyon Rim. Among the points of particular interest are Hopi House across from

El Tovar, Hermit's Rest and the Watchtower at Desert View on the East Rim Drive. All tours and trail trips are available to day visitors.

**For Hotel and Lodge Reservations** at any of the Grand Canyon's guest facilities simply contact your travel agent or the Grand Canyon National Park Lodges Reservations Office at the Grand Canyon. Call (602) 638-2401 or write Grand Canyon National Park Lodges Reservations, Grand Canyon, Arizona 86023.



BRIGHT ANGEL CABIN

OPEN ALL YEAR

# The Wonders of the Grand Canyon

The Grand Canyon is one of the seven natural wonders of the world. Occupying 217 miles of the Colorado River, the Canyon is the product of 10 million years of gradual rise in the level of Arizona's Coconino Plateau. As the land has risen, the great river has gradually cut the Grand Canyon to a depth of almost a mile below the South Rim. And to a width of from 4 to 18 miles.

Along the walls of the Canyon, geologists have traced three of the five major chapters in the earth's geology, including rocks from the first era of geologic history.

Although the Canyon's recorded history began with its discovery by Don Lopez de Cardenas in 1540, the Grand Canyon has been the home of many Indian tribes since the era of pre-history. More than 800 prehistoric living sites have been cataloged within the Canyon and five major Indian tribes presently live and work within the Grand Canyon area: The Navajo, Hopi, Havasupai, Hualapai and Paiute. Representatives of almost every tribe may currently be found working at the Fred Harvey guest facilities at the Canyon's South Rim, and products of Arizona's highly skilled Indian craftsmen are on display or for sale throughout the Canyon facilities. Visits to various Indian villages and attractions may be arranged through the Fred Harvey Transportation desks at the Grand Canyon. Most side trips can be accomplished in one day.

More than sixty species of mammals, 250 kinds of birds, 25 reptiles and five amphibians live within the borders of Grand Canyon National Park. Many of these, such

as the deer and small animals at the Canyon Rim, are almost unavoidable while others, such as the Coyote, the Ring-Tail Cat and other nocturnal animals, may only be discovered with a certain amount of patience.

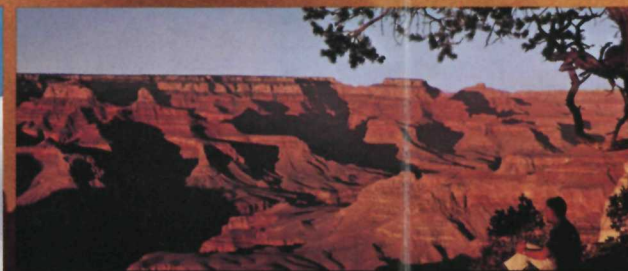
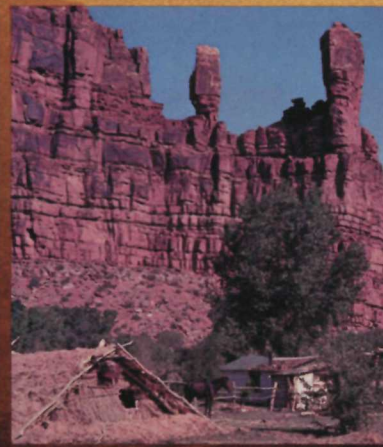
Books, pamphlets and lectures provided by the National Park Service offer an interesting and highly educational overview of the Canyon, its natural history, geology and anthropology. Complete information concerning the Grand Canyon is available at the Grand Canyon Visitors Center.

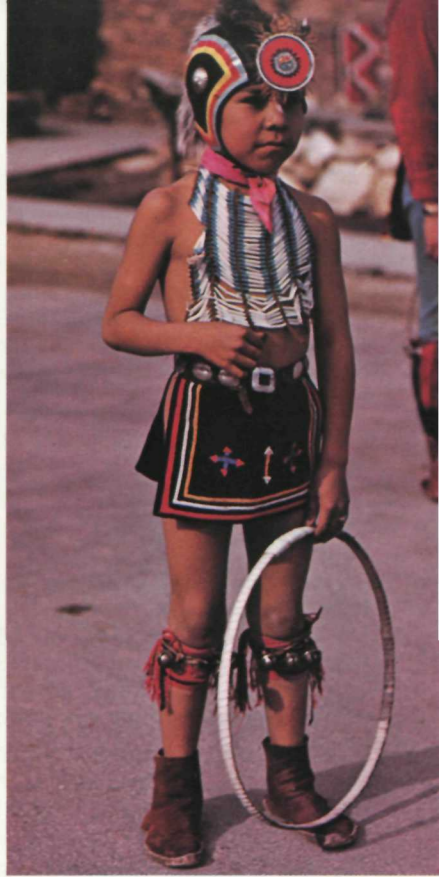
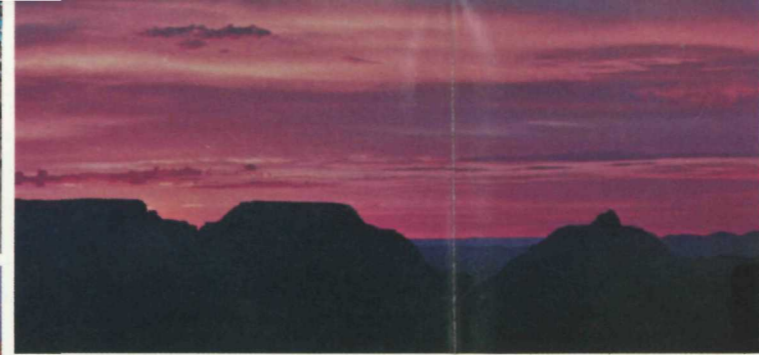
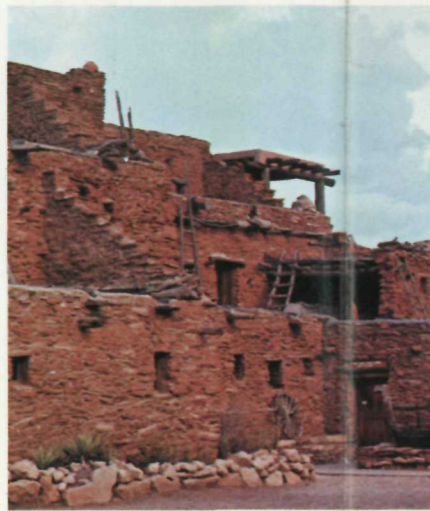
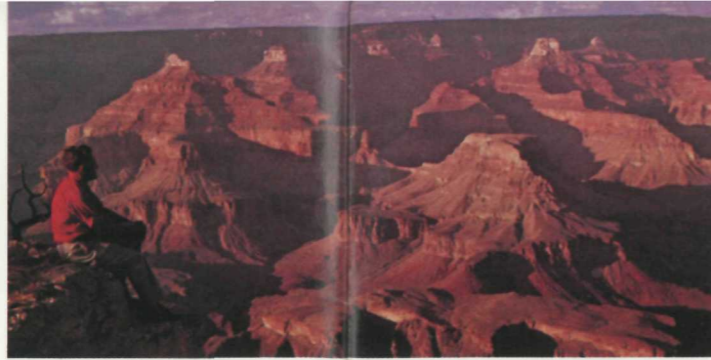
Climate: Because of the Canyon's great depth and its location on the Arizona plateau, six of the world's seven climatic belts lie within the area of the Grand Canyon.

The Grand Canyon's location also makes it a natural year round resort—high enough to escape the desert's heat in Summer, yet far enough south to avoid the rigors of Winter.

Nights are cool enough for a sweater, even in mid-Summer. And although the Grand Canyon is a magnificent spectacle in any season, it is particularly beautiful during the Winter months when a light dusting of snow often etches each of the Canyon's thousand levels. During the Winter, warm clothing is necessary. Visitors to the Canyon will find Fred Harvey facilities and hotels at the South Rim open year round.

The natural orientation of the Canyon serves to make both sunrise and sunset at the Canyon particularly spectacular. The views at morning and evening are particularly beautiful from the vista platforms at the many points along the East and West Rim drives.





## Tours and Trail Trips.

**Free Nature walks, lectures and films** are provided by the National Park Service at the Grand Canyon. Information concerning schedules is available at the National Park Visitors Center or from the Transportation Desks at the Fred Harvey hotels at the Grand Canyon. Courteous National Park Rangers will be pleased to answer your specific questions.

**Trips into the surrounding country** by private or chartered car can be particularly rewarding. Nearby lie the Navajo Indian Reservation, Old Moencopi, Glen Canyon Dam, Lake Powell, the Hopi villages, the prehistoric ruins of Wupatki and Walnut Canyon National Monuments, Sunset Crater National Monument, Meteor Crater, the Painted Desert, Cameron Trading Post and the natural wonders of the high Arizona plateau. The Fred Harvey Transportation Desks at the Grand Canyon can provide full details.

**Motor Coach Tours** of the Grand Canyon Rim are conducted year round.

**The Desert View Drive** begins at El Tovar Hotel and Bright Angel Lodge and continues eastward along the Rim road. Stops include Yavapai Point Museum, Moran and Lipan Points. The high point of the trip is the stop at Desert View Watch Tower. This structure, a reconstruction of the ancient Indian watchtowers, offers a magnificent view of the Grand Canyon, the Kaibab National Forest, the Painted Desert and the Navajo Country. A Fred Harvey Trading Post and luncheonette are located near the tower. The tour is available year round.

**The Hermit's Rest Drive** begins at the El Tovar and Bright Angel Lodge and continues westward along the Canyon

Rim to Hermit's Rest. Along the way, stops are made at Trail View, Hopi and Pima Points, natural rim points which provide superb views of the Grand Canyon. Mid-point in the tour is Hermit's Rest, a unique cliff house of native boulder with a rustic lounge, great fireplace and observation porch commanding a sweeping view of the Canyon.

**Canyon Mule Trips** leave the South Rim of the Canyon to wind their way miles down into the Canyon. Led by experienced guides, these trips cover trails cut directly into the Canyon walls by Government engineers. For anyone with even moderate horseback riding experience, the mule trip into the inner Canyon is an unforgettable experience. And only the descent into the Canyon reveals many of the most spectacular aspects of its geology. Trips depart from the Rim each morning and early afternoon (subject to Winter schedule).

Management must restrict trail trips to persons physically fit, weighing not more than 200 pounds fully clothed, persons not too advanced in years, and to children 12 years of age and older. Previous riding experience is recommended and rental riding clothes are available. It is suggested that advance reservations be made. All trail trip tickets must be claimed before 8:00 a.m. on the day of the trip.

**Two Day Trips to Phantom Ranch**, nearly a mile below the Canyon Rim, are available year round. Mule trains leave the Rim each morning and proceed down to the Colorado River. A suspension bridge across the Colorado provides access to Bright Angel Canyon and the Phantom Ranch. After an overnight stay in the comfortable accommodations at Phantom Ranch, the trip returns to the South Rim arriving early afternoon.