

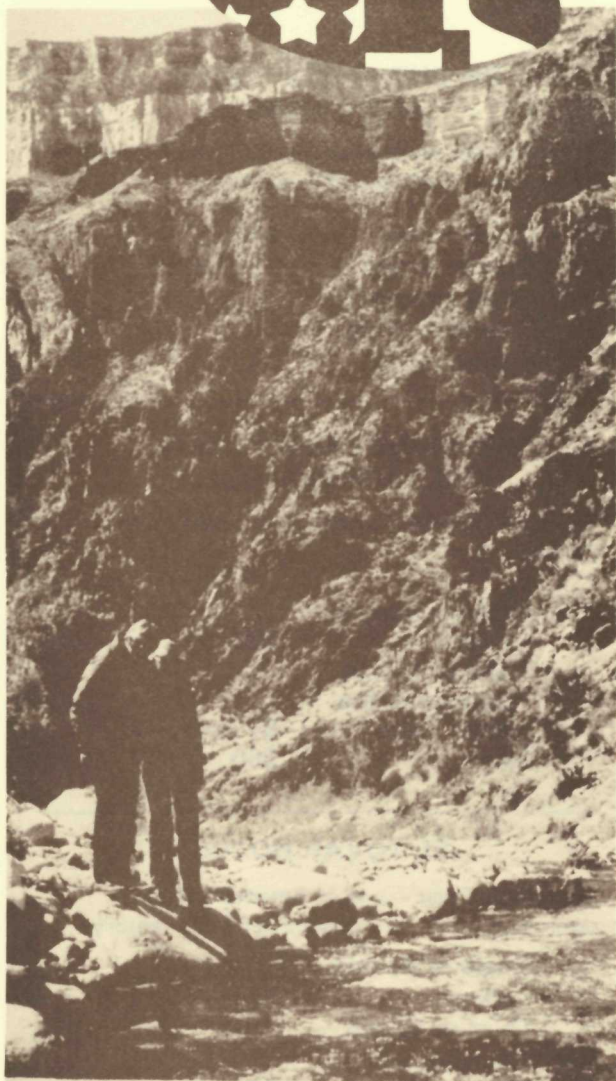
1977

GrandCanyon

NATIONAL PARK LODGES

Open all year

RATES



For Reservations see your Travel Agent or call
(602) 638-2401.

GrandCanyon

NATIONAL PARK LODGES

Open all year



BRIGHT ANGEL LODGE AND CABINS

Natural charm on the Canyon Rim where you'll find modern comfort and convenience.

Single rooms	\$16 - \$30
Double rooms	\$19 - \$30
Third or fourth persons in the same room	\$4 each

THE THUNDERBIRD LODGE AND KACHINA LODGE

These two beautiful lodges are situated on the Canyon's Rim.

Single or double rooms	\$30
Third or fourth persons in the same room	\$4 each
Suites	\$60

EL TOVAR HOTEL

Historic El Tovar — one of America's great resort hotels since the beginning of this century.

Single or double rooms	\$30
Third or fourth persons in the same room	\$4 each
Suites	\$60 - \$65

YAVAPAI LODGES

The Yavapai Lodges, in the pine and juniper woodlands between Yavapai Point and El Tovar, are minutes from the Canyon's Rim.

THE ORIGINAL YAVAPAI LODGE

Single rooms	\$19
Double rooms	\$21

THE NEW YAVAPAI LODGE

Single rooms	\$21
Double rooms	\$27

Third or fourth persons in the same room	\$4 each
--	----------

GRAND CANYON MOTOR LODGE

Located a short distance from the Canyon, the Motor Lodge offers family-style cabins or the high rise.

MOTOR LODGE CABINS \$13-\$15

MOTOR LODGE HIGHRISE \$24

Third or fourth persons in the same room	\$4 each
---	----------

All rates are subject to 3% Arizona State Tax
Some Lodges close seasonally



DEATH VALLEY

Rates effective through
October 31, 1977.

FURNACE CREEK INN

Historic Furnace Creek Inn is located in one of California's loveliest winter settings. American Plan offers you accommodations and three superb meals per day.

The Inn is open November 1 through April 30.

SINGLE ROOMS	\$51-\$72
DOUBLE ROOMS	\$68-\$89
THIRD PERSON IN THE SAME ROOM	\$27

FURNACE CREEK RANCH

This authentic "western spread" is open year round. Refresh yourself at the saloon, stroll around the General Store, dine western style at our steak house.

SINGLE OR DOUBLE \$22-\$39 PER NIGHT
(European Plan - no meals)

Enjoy swimming, tennis and golf at Furnace Creek Inn and Ranch Resort.

All rates plus tax.

For reservations see your Travel Agent or call Toll Free (800) 227-4700; in California (800) 622-0838.

las vegas marina

hotel casino

Non-stop fun at our new, modern hotel-casino, on the Strip. Top entertainment nightly. Enjoy great food and fun at Shipwreck Kelly's Lounge and Galley. Single and Double accommodations from \$25 - \$34 per night. Suites from \$60 per night.

All rates plus tax.

For reservations see your Travel Agent or call Toll Free (800)227-4700; in California (800) 622-0838.

DEPOSITS: One night's deposit per room must be received no later than 10 days after confirmation to hold booking firm.

CANCELLATION: Must be received in writing no later than 48 hours prior to hotel check-in or deposit is non-refundable.

