

Appendix 14

Page 163 of the 1903 Brand Book for Montana (the title page of which is also shown here) carries the major Kohrs, Bielenberg, and Boardman cattle and horse brand designs.

BRAND BOOK

OF THE

MONTANA

Stock Growers' Association

FOR

1903

SEVENTH PUBLICATION

HELENA, MONTANA
INDEPENDENT PUBLISHING CO.
1903



MONTANA STOCK GROWERS' ASSOCIATION

163

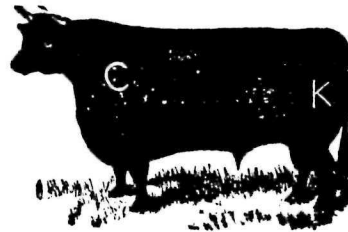
Pioneer Cattle Company.

CONRAD KOHRS, President, J. M. BOARDMAN, Gen. Manager.

P. O. Address, Helena, Mont.

S. J. Scott, Foreman, Oswego, Mont.

Range, north from Yellowstone River to Missouri River, including Big Dry Creek and tributaries in Dawson county.



Earmark

Other brands

left side cattle
left shoulder horses

Earmark

left shoulder

left thigh

left shoulder

left thigh

or left thigh or left side

Vent for horses,

over brand

left thigh

