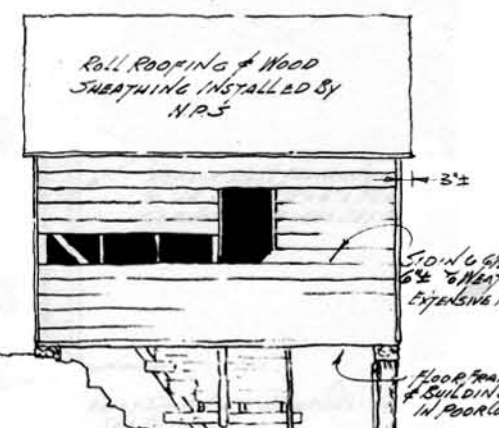
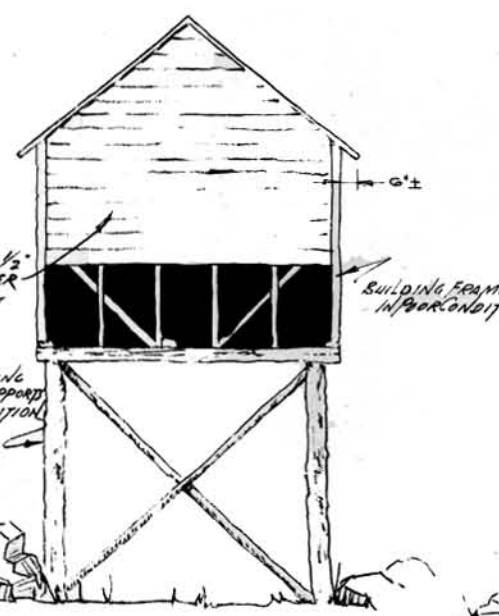


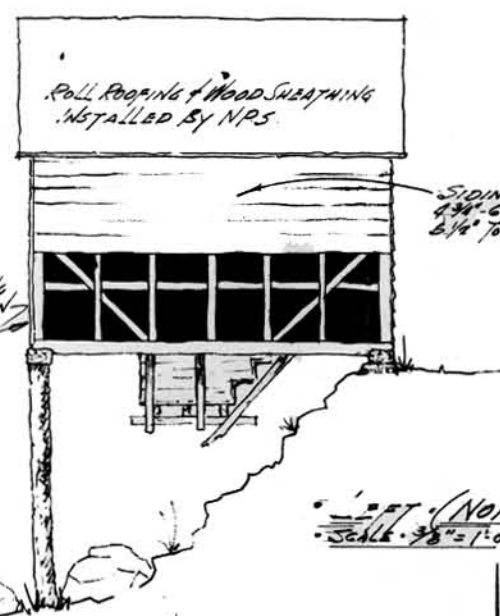
FRONT (WEST) ELEV.  
SCALE 3/8" = 1'-0"



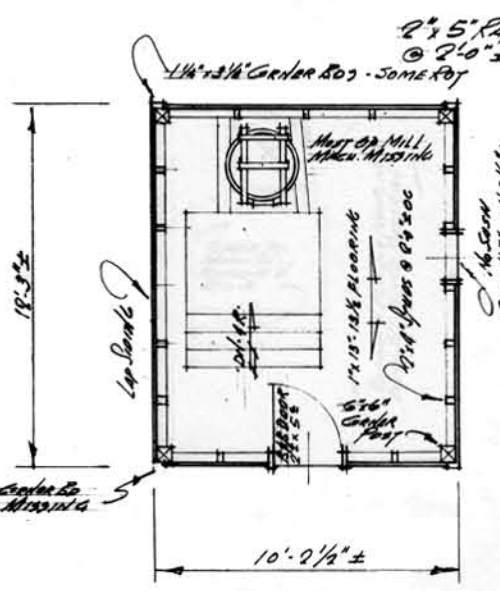
RIGHT (SOUTH) ELEV.  
SCALE 3/8" = 1'-0"



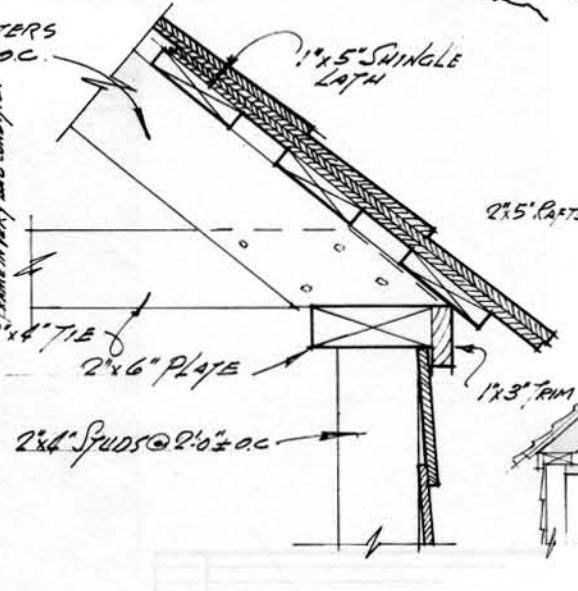
REAR (EAST) ELEV.  
SCALE 3/8" = 1'-0"



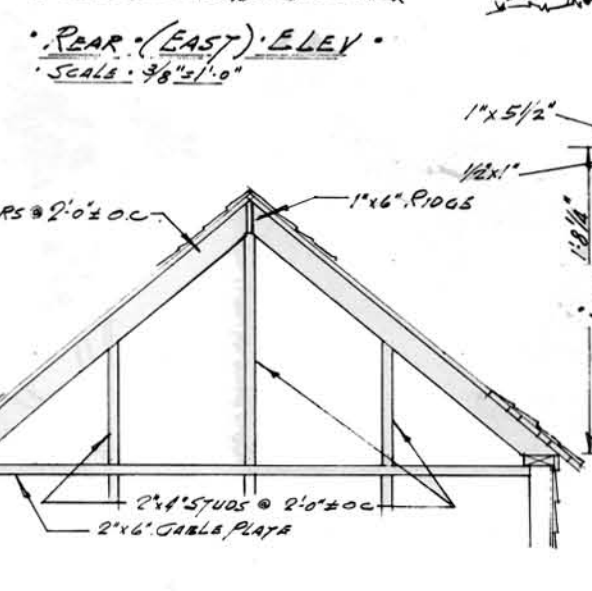
LEFT (NORTH) ELEV.  
SCALE 3/8" = 1'-0"



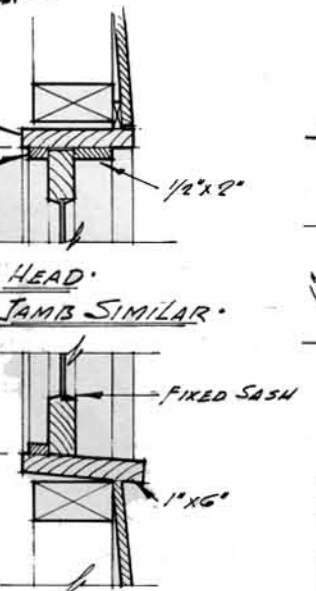
PLAN  
SCALE 3/8" = 1'-0"



DET. ROOF FRAMING  
SCALE 3" = 1'-0"

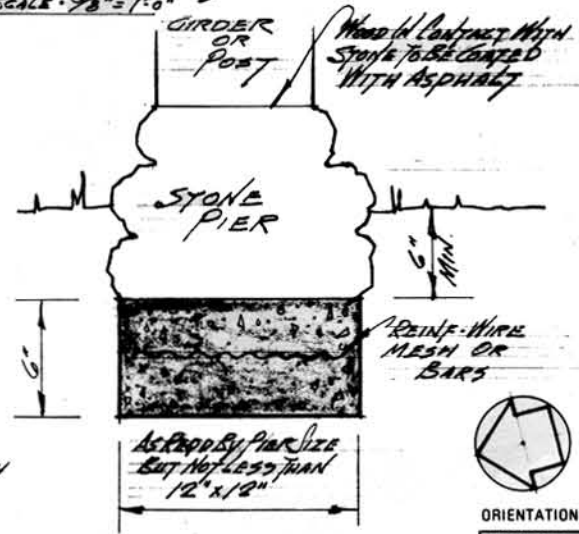


DET. GABLE FRAMING  
SCALE 3/4" = 1'-0"

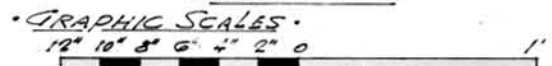


SILL

WINDOW DETAILS  
SCALE 3" = 1'-0"



DET. CONC. FTG. FOR PIERS  
SCALE 3" = 1'-0"



PREPARED	2-70 P. Jones
DESIGNED	A. B. Jones
DRAWN	
CHECKED	

SYMBOL	DESCRIPTION OF REVISION	DATE	SURNAME

REGION	SOUPSBAY
PROJECT	PCY 8-307-2
DRAWING NO.	133
SHEET NO.	34006
DATE	11-29-70

RESTORATION: ALFRED REAGAN TUB MILL  
 TITLE OF DRAWING: ROAD END FORK  
 LOCATION WITHIN PARK: GREAT SMOKY MOUNTAINS N.P.  
 DATE OF TIME: 11-29-70

BASIC DATA: N.P.S. DWGS BY S. HENRY DATED 1957 & INSPECTION BY R. JONES NOV. 1968.

