

LeCONTE LODGE

in the

Great Smoky Mountains National Park



Atop Mt. LeConte, El. 6593 ft.

OPEN MID APRIL THROUGH OCTOBER

HERRICK BROWN, Owner & Operator

Post Office: Gatlinburg, Tenn. 37738

Telephone: 436-4473

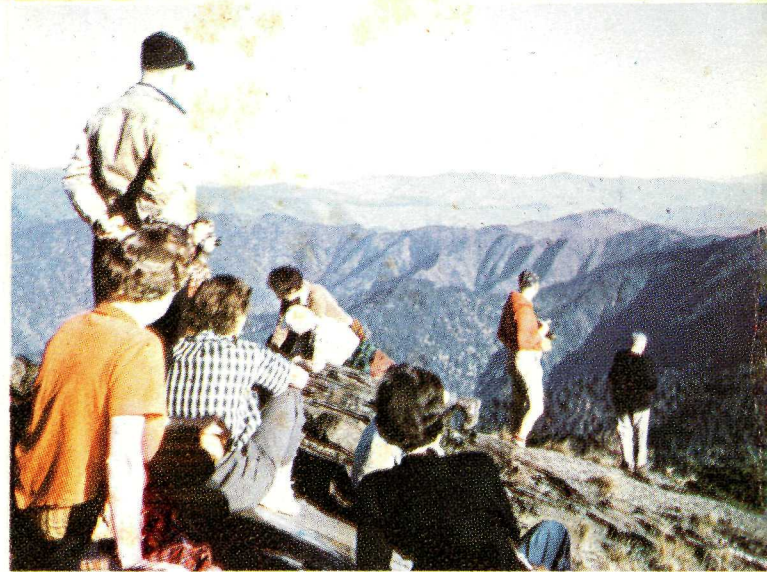
Area Code: 615



“HIGH POINT OF YOUR HOLIDAY IN THE SMOKIES”

LeConte Lodge, the highest guest lodge in the Eastern United States, is situated on an open glade just below the summit of Mt. LeConte at an elevation of 6400 feet. The Lodge serves as a grandstand for the entire Park, and commands spectacular views of the Smokies. The Lodge can be reached only by hiking and horseback trails starting from points near the resort community of Gatlinburg.

Characteristic of the Lodge is its atmosphere of quiet simplicity. No “modernization” has been permitted to spoil the natural beauty and the grandeur of the area. Guests are housed in comfortable cabins with wood-burning fires, restful beds and warm blankets. Hearty meals are served in the family-style dining room. The long, cool summer evenings are usually spent with fellow hikers before the open fires of the log cabins which were built by hand from native timber. The basic charm of LeConte Lodge lies in the friendly spirit of the people who come here . . . people who find relaxation and renewed energy in the cool, majestic solitude at the top of the Smokies.



View From Myrtle Point

ACCOMMODATIONS AND RATES AT LeCONTE LODGE

All of the beds at LeConte Lodge are double-size, arranged bunk style. The smaller cabins sleep four people in two double beds. The two large log cabins have a total of five bedrooms and can accommodate eight and twelve guests respectively. All bedrooms are private. The evening activity of guests at the Lodge usually centers before the open fire in the two log lodges.

1969 RATES

Lodging in room with two double beds, without bath	
Per person, per day, single bed occupancy	\$6.00
Per person, per day, sharing double bed	5.00
All meals, each	2.50
Children age 10 and under	1.25
Lunches	A La Carte
Care and feeding of guest's horse, per horse, per night	5.00

A deposit of four dollars per person is required to protect your reservation. This deposit is, of course, credited to your account. Checks should be made payable to LeConte Lodge. Deposits will be returned, in the event of cancellation if notice is received by the Lodge two days before scheduled arrival.

4% Sales Tax Included

Trails To LeConte Lodge

These trails are maintained by the Park Service and are clearly marked so that a guide is not necessary. Riding horses for the trip to LeConte Lodge may be rented at various places near Gatlinburg. Note that the Alum Cave Trail and the Bullhead Trail are closed to horses.

ALUM CAVE BLUFFS TRAIL: 5½ miles long, climbing 3,000 feet, from the Alum Cave parking area (1½ miles above the loop-over on U. S. 441) to the Lodge. About four hours hiking time.

RAINBOW FALLS TRAIL: 6.7 miles long, climbing 4,000 feet, from the Cherokee Orchard parking area (four miles from Gatlinburg), to the Lodge. Excellent horseback and hiking trail. About five hours hiking time.

BULLHEAD TRAIL: 7.2 miles long, from the Cherokee Orchard parking area, climbing 4,000 feet to the Lodge. Hiking time about 5½ hours.

TRILLIUM GAP TRAIL: 8 miles from Cherokee Orchard parking lot, or 6½ miles if car is parked on Motor Nature Road at trail junction. Hikers may use 1¼ miles of road between points "A" and "B" instead of following horse trail. See map. Hiking time 4-5 hours; total climb about 3500 feet. Cars cannot be left overnight on Motor Nature Road.

BOULEVARD TRAIL: 8 miles long, from Newfound Gap, over the Appalachian Trail to Mt. Kephart, thence over the Boulevard Trail to the Lodge. About 5 hours hiking time.

GENERAL TRAIL INFORMATION: Much of the pleasure of a visit to LeConte Lodge is the leisurely hike up the beautiful forest trails. Wear sturdy, comfortable shoes and light, warm clothing. Bring a lightweight raincoat for the summer showers and a warm sweater or jacket for the cool evenings. Otherwise, you will need only personal articles. A flashlight is also recommended.

