

# **DOG CANYON**

**Guadalupe Mountains National Park**



## **DOG CANYON**

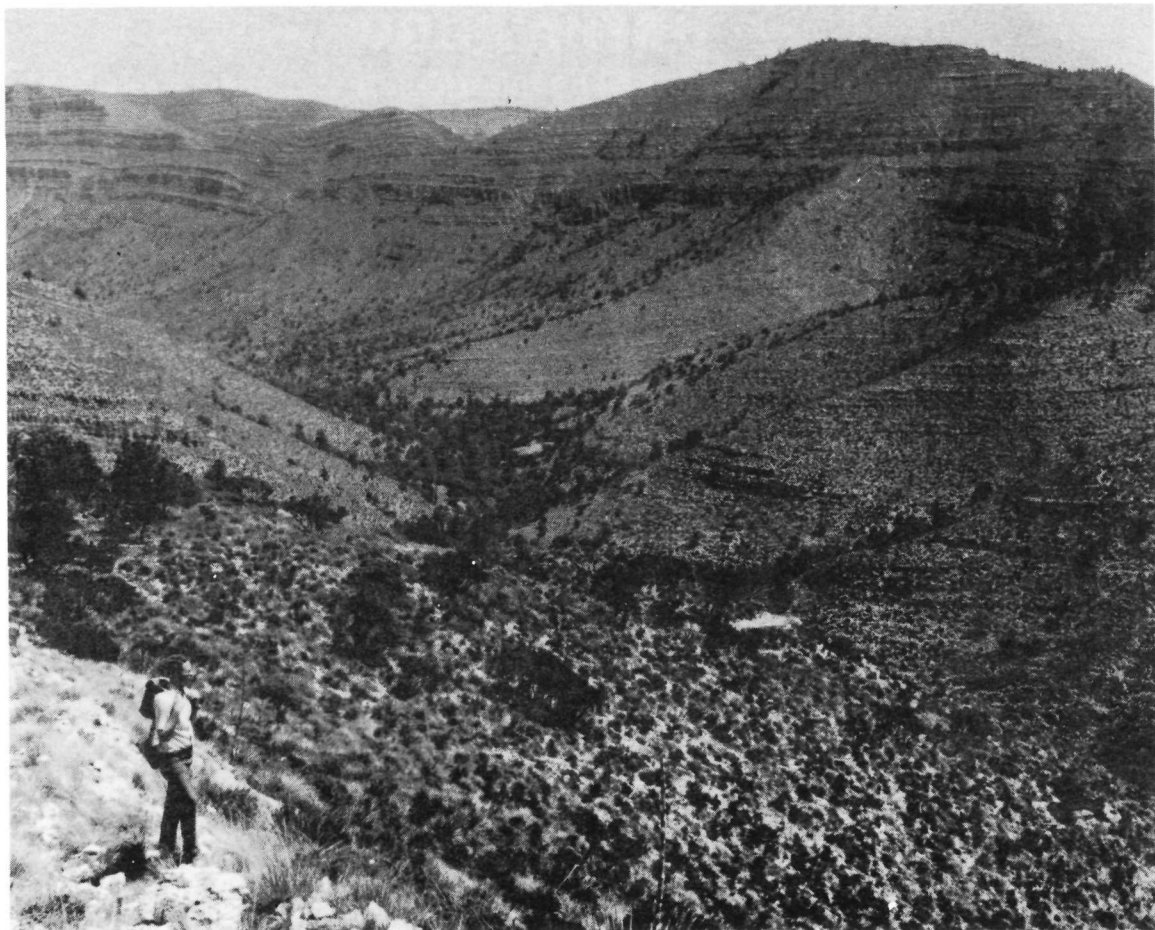
The Dog Canyon area of Guadalupe Mountains National Park lies in a secluded and forested canyon at an elevation of 6,300 feet on the north side of the park. A mixture of junipers, pines, maples and oaks offer shade and greenery. To get there, drive 12 miles north from Carlsbad, New Mexico, on U.S. highway 285 and turn left on State highway 137. State highway 137 is paved for the first 47 miles and then becomes a gravel road for the remaining 10 miles into Dog Canyon (see map on back). Plan on a 3-hour drive from the Pine Springs area on the south side of the park or a 2-hour drive from Carlsbad, New Mexico, to get to Dog Canyon. A ranger lives there but may not be on duty in the ranger station/residence when you arrive. There are no park fees.

## **CAMPING AND PICNICKING**

Visitor facilities here include a campground with walk-in type tent sites and parking spaces for recreational vehicles. The campground also serves backpackers and picnickers. Drinking water is available. There are modern restrooms but no electrical hookups or RV dumping facilities. Grills are provided; however you must furnish your own charcoal. Ground fires are not permitted.

## **HIKING AND BACKPACKING**

Trails from Dog Canyon offer good access to the highcountry of Guadalupe Mountains National Park with relatively easy grades. The Lost Peak trail leads south into the forested highcountry of the park through upper Dog Canyon. The Marcus trail takes the hiker west into West Dog Canyon. Both of these trails connect with other backcountry trails so a variety of day hikes, overnight trips, loop hikes or across-the-park hikes can all begin from Dog Canyon. If you plan to hike, you can get information and purchase a topo map at the ranger station/residence, when the ranger is on duty. You must obtain a free backcountry use permit before starting an overnight trip. Maps and permits are also available at the park headquarters office at 3225 National Parks Highway in Carlsbad and at the park's Frijole Information Station. Pets are not allowed on the hiking trails. Trails leading out of Dog Canyon are also suitable for horseback use. Feed and water for horses must be provided by riders.



## **REMEMBER . . .**

***Camp In Designated Campground  
and/or Backcountry Campsites Only.***

***Pets Must Be Leashed While In The  
Campground And Are Not Permitted  
In The Backcountry.***

***Ground Fires & Wood Gathering  
Are Not Permitted.***

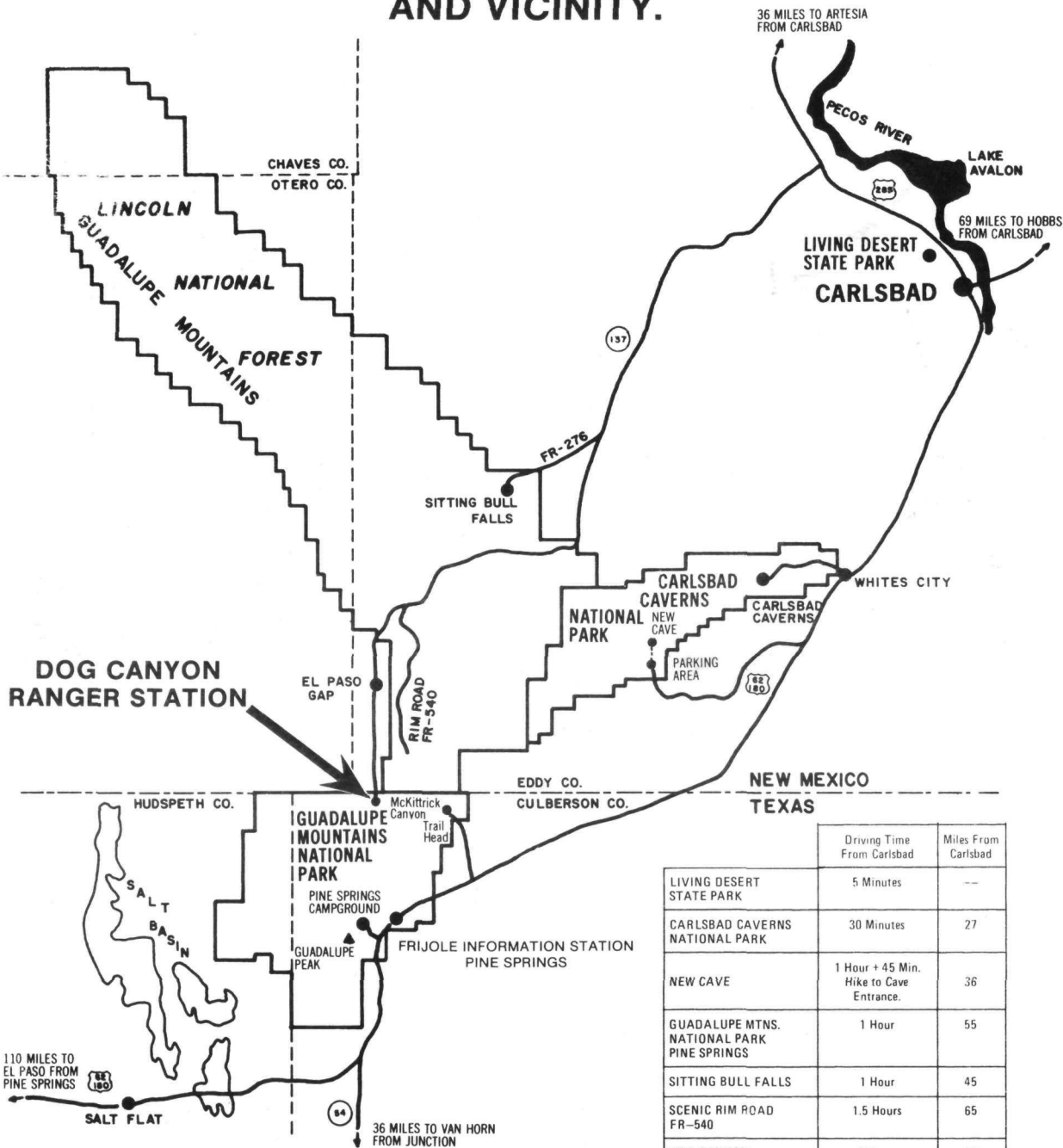
***Backcountry Use Permits Are  
Required For Overnight Trips.***

***Firearms and Hunting  
Are Prohibited.***

***Do Not Disturb Plants  
or Animals.***

**FOR FURTHER INFORMATION CALL GUADALUPE MOUNTAINS NATIONAL PARK 915/828-3385  
OR DOG CANYON RANGER STATION 505/963-2418**

# CARLSBAD, THE GUADALUPE MOUNTAINS, AND VICINITY.



	Driving Time From Carlsbad	Miles From Carlsbad
LIVING DESERT STATE PARK	5 Minutes	--
CARLSBAD CAVERNS NATIONAL PARK	30 Minutes	27
NEW CAVE	1 Hour + 45 Min. Hike to Cave Entrance.	36
GUADALUPE MTNS. NATIONAL PARK PINE SPRINGS	1 Hour	55
SITTING BULL FALLS	1 Hour	45
SCENIC RIM ROAD FR-540	1.5 Hours	65
DOG CANYON	2 Hours	70