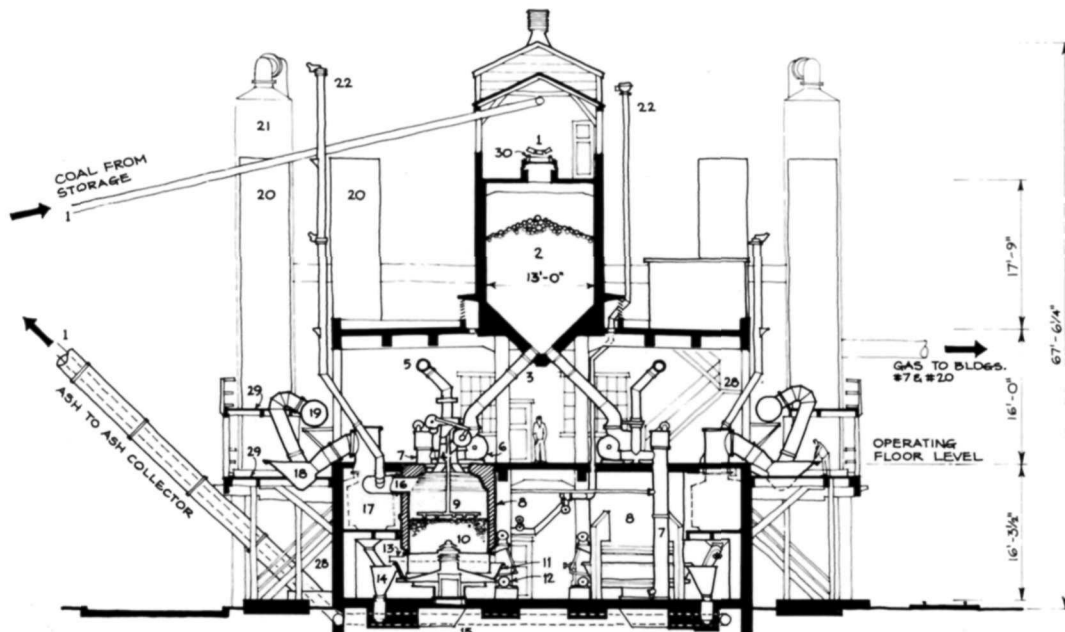




FY 1986 ANNUAL REPORT

Historic American Buildings Survey/Historic American Engineering Record
 (HABS/HAER) Division
 National Park Service





United States Department of the Interior

NATIONAL PARK SERVICE

P.O. BOX 37127

WASHINGTON, D.C. 20013-7127

IN REPLY REFER TO:

October 1, 1986

MESSAGE FROM THE CHIEF

Fiscal Year 1986 was one of the most successful years in the history of the HABS/HAER programs. Despite a 4.7% Gramm-Rudman cut, HABS/HAER was able to sustain extremely high levels of recording activity. Some of the highlights contained in this report are:

- A record number of HABS/HAER summer projects were undertaken. Twenty-five (25) summer recording teams were fielded, employing over 120 students and professors (the previous largest summer recording season was in 1979 when HABS/HAER had more than twice as many staff members to organize and conduct the projects).
- Continued high levels of transmittals of HABS/HAER documentation to the permanent HABS/HAER collections in the Library of Congress were sustained. Documentation on over 1,400 historic structures and sites were transmitted in FY 1986. In the last four years, HABS/HAER has increased the size of its permanent collections by approximately 50%.
- The HABS/HAER data base was tripled in size and enhanced in its ability to handle inventory, research and collections management functions related to the HABS/HAER collections.

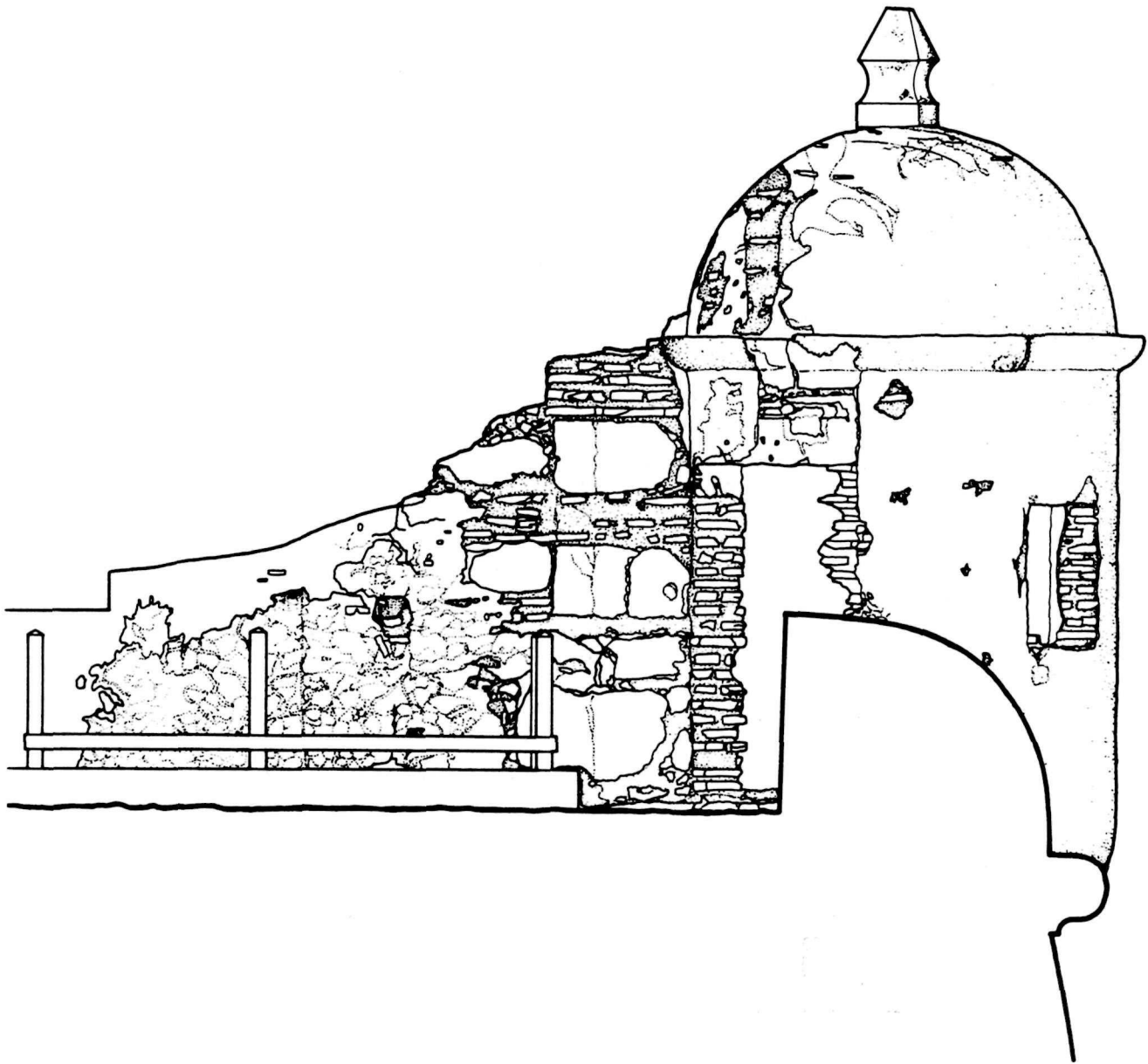
Fiscal Year 1986 was a success due to the initiative of the staff of HABS/HAER. But the year was not without its problems. Planned equipment purchases had to be deferred because allocated funds were needed for other purposes. HABS/HAER has a critical need for equipment, particularly field equipment such as electronic distance meters and similar equipment. This equipment shortage must be addressed in Fiscal Year 1987.

Other problems still remain. HABS/HAER still has no advisory committee -- the former HABS/HAER advisory committees having been abolished by the previous Administration. We hope to see favorable action on this issue in 1987. Funding for HABS/HAER projects also remains a problem. The HABS/HAER matching funds program for summer recording, also abolished by the previous Administration, needs to be reinstated. But, in total, 1986 was one of the most successful years in the history of the programs.

The outlook for HABS/HAER in Fiscal Year 1987 appears to be a constant level of appropriated funding, an increase in expenses, sustained high recording activity, and modestly high levels of transmittals -- in short, a year very similar to Fiscal Year 1986.

We would appreciate comments, suggestions, and ideas from our alumni, friends and documentation users.

ROBERT J. KAPSCH



FORTIN DE SAN JUAN DE LA CRUZ , EL CAÑUELO
SAN JUAN NATIONAL HISTORIC SITE , PUERTO RICO
DELINEATOR : JORGE L. SEIN , 1986

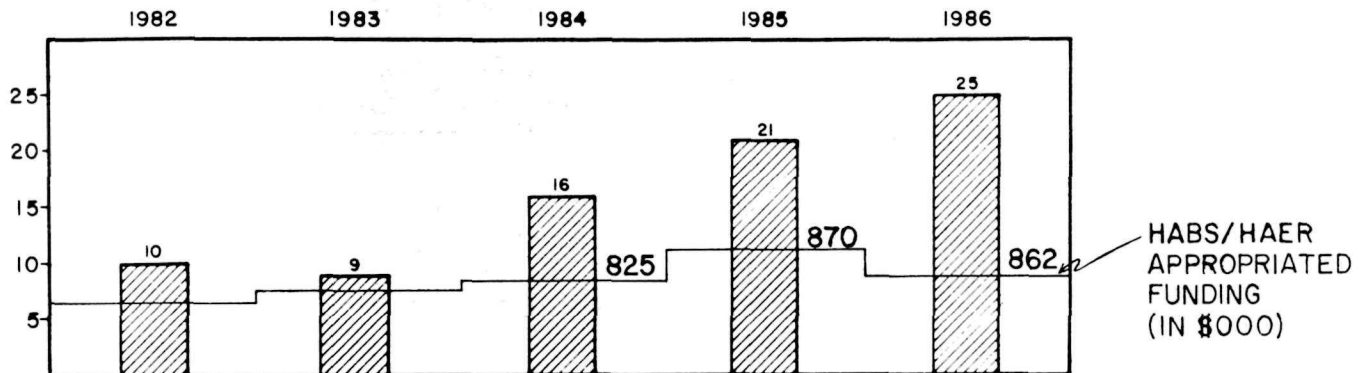
FISCAL YEAR 1986 HABS/HAER STATISTICS

HABS/HAER Transmittal Statistics¹

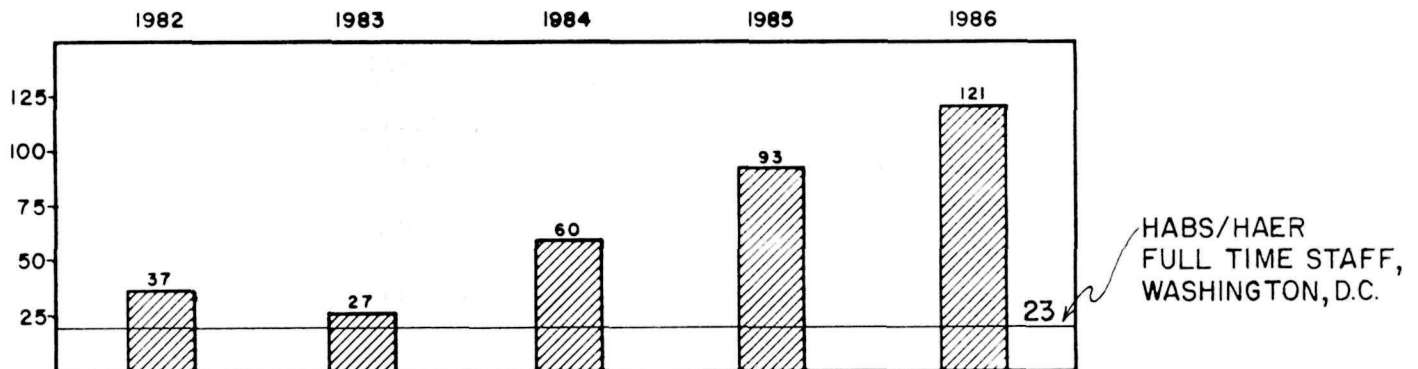
<u>Fiscal Year</u>	<u>77</u>	<u>78</u>	<u>79</u>	<u>80</u>	<u>81</u>	<u>82</u>	<u>83</u>	<u>84</u>	<u>85</u>	<u>86</u>
Structures	70	60	606	1009	323	134	2928	2419	1919	1471
Drawings	142	72	1086	1529	599	305	5124	2853	2073	739
Photographs	311	461	3777	7596	2107	1981	17779	15793	10930	7829
Data Pages	291	324	3047	6173	1625	1674	7404	8083	5654	8412

¹ Represents a 10-year period, included for comparison purposes. Not included in these statistics are the number of field notebooks, field photographs, stereopairs, and similar materials produced and transmitted to the permanent HABS/HAER collections maintained in the Prints and Photographs Division, Library of Congress.

NUMBER OF SUMMER TEAMS FIELDIED



NUMBER OF STUDENTS HIRED



FUNDING

In Fiscal Year 1986, the HAES/HAER Division received \$862,600 in appropriated funding and \$670,124 in reimburseable and donated funds. These numbers represent direct costs only. Indirect costs, such as funds allocated for space rental, telephone, guard and cleaning services, etc., are paid from a central National Park Service account. In addition, funds obligated in previous years, but expended in Fiscal Year 1986, are also not included in the above figures. Funding projections for Fiscal Year 1987 appear to be approximately the same as for Fiscal Year 1986 with a 3% increase in salaries.

DONATIONS

- Piaget-van Ravenswaay Collection. During FY 1986, HAES/HAER completed the processing of over 1,600 large format photographs into the permanent HABS collection. These photographs, taken over a four decade period, were produced by brothers Alexander and Paul Piaget, both now deceased, and Charles van Ravenswaay. In 1931, Alexander Piaget and Charles van Ravenswaay initiated a project to photograph the architectural heritage of Missouri. This project continued intermittently through the 1970s. In 1986, this collection found its permanent home in the HABS collection in the Library of Congress. On October 29, 1986, Librarian of Congress Daniel Boorstin presided over a ceremony to honor the Piaget brothers and Charles van Ravenswaay for their contribution to our understanding of Missouri architecture. Clare Piaget, niece of Alexander and Paul, represented the Piaget family. HAES historian Kim Hoagland was responsible for the successful project execution, with the assistance of Deborah A. Fulton, historian, from the University of Virginia.
- HABS/HAER Alaska Drawings. In September 1986, NPS Alaska Regional Historian Robert Spude transferred approximately 146 sheets of HABS/HAER measured drawings to the HABS/HAER Washington office. Under the direction of Mr. Spude, and with the assistance of the HABS/HAER Washington office, these drawings were prepared over a four-year period and represent a wide range of sites, including Dutch Harbor, a World War II battlefield; structures associated with extractive industries, such as the Kennecott Copper Mine; numerous vernacular structures, and others. HABS Historian Kim Hoagland served as field supervisor for four summers and coordinated this effort from Washington.
- Statue of Liberty CAD Drawings. During the centennial year of the Statue of Liberty, HAER project leader Eric DeLony worked with the design engineering firms of Burns and Roe, and Ammann and Whitney, and specifically with John Tesoro, program manager for the development of the computer-assisted drawings (CAD) software used in the restoration of the Statue of Liberty. This CAD package produced drawings of the Statue of Liberty to HAER standards. They were presented to HAES/HAER Chief Robert Kapsch by American Society of Civil Engineers President Robert Bay at a ceremony at the Statue of Liberty on October 24, 1986.
- HAMS Drawings. In July 1986, the Division of Transportation in the Smithsonian Institution's National Museum of American History donated to HABS/HAER a seven-volume set of recently-published Historic American

Merchant Marine Survey (HAMMS) drawings. Modeled after HABS, the HAMMS was conducted 1936 to 1937, but it succeeded in documenting 455 historic American merchant vessels. In view of HAER's recent program to record historic ships, the HAMMS volumes are a reference asset of great value to HABS/HAER. John H. White, Jr., Curator of the Division of Transportation, and John N. Stine, Chief Technician, arranged the donation while HAER staff member Richard K. Anderson, Jr. was doing research in the HAMMS collection maintained at the Smithsonian.

AWARDS AND HONORS

- On March 31, 1986, Jack E. Boucher, HABS photographer, received a Meritorious Service Award from the U. S. Department of the Interior for twenty-five years of Federal Service as photographer for the Historic American Buildings Survey. In commemoration, Jack was honored at a reception held at the headquarters of the American Institute of Architects where, on exhibit, were 140 color and black and white photographs taken from a collection of approximately 55,000 images taken by Jack throughout the 25 years -- representing approximately half of all the large format photographs in the HABS collection. National Park Service Director William Penn Mott, Jr. spoke at the reception, comparing Jack to the late Ansel Adams. Following the reception, a dinner was held at the Cosmos Club, where more accolades outlining Jack's career were presented. NPS Associate Director Jerry Rogers, HABS founder Charles E. Peterson, and former HABS chiefs James Massey and John Poppeliers were in attendance.

The exhibit is now travelling nationwide under the auspices of the Library of Congress' Traveling Exhibits Program. The University of Missouri Press will be issuing a catalogue to accompany the exhibit. The American Institute of Architects has created a poster showing one of Jack's photographs of the Carson House in Eureka, California.

- On August 23, 1986, friends of Charles E. Peterson assembled at Carpenters' Hall in Philadelphia to celebrate his 80th birthday. As *Mr. Peterson arrived at the hall in a horse-driven carriage, guests released blue and white balloons amidst applause and piping of a Scottish bagpiper.* Charles Peterson founded the Historic American Buildings Survey in 1933.

1986 CHARLES E. PETERSON PRIZE AWARDS

HABS/HAER is pleased to announce the winners of the 1986 Charles E. Peterson Prize. On October 4, 1986, HABS/HAER, in cooperation with The Athenaeum of Philadelphia and the American Institute of Architects, presented awards for the best set(s) of drawings done to HABS/HAER standards and donated to the HABS/HAER collections by a student or group of students. The judges were Constance Grief, representing The Athenaeum of Philadelphia, Edward A. Masek, Jr., AIA, representing the AIA, and HABS Architect Paul D. Dolinsky, representing HABS/HAER.

This year, 162 drawings, with an estimated value of \$162,000, were received in the HABS/HAER office. John A. Burns, AIA, HABS Architect, was project leader.

First place: Steven Eric Nys and David M. Burger, Washington State University
 Faculty Sponsor: Professor J. William Rudd
 Drawings: T. A. Leonard Barn (National Register), Pullman vicinity, Washington

Second place: Timothy R. Hanna, Hampton University
 Faculty sponsor: Professor Solil Banerjee
 Drawings: Adam Thoroughgood House (National Historic Landmark), Virginia Beach, Virginia

Third place: David Haney, John Jensen, Kui Mew Wong and Judy S. I. Yeoh, University of Arkansas
 Faculty Sponsor: Professor Elam L. Denham
 Drawings: Old Monroe County Jail (National Register), Clarendon, Arkansas

Honorable Mention:

Michael Lambert, Joseph Meier, Kevin Rotheroe, Daniel Moore and Susan Wydick, University of Illinois
 Faculty Sponsor: Professor John S. Garner
 Drawings: Penfield Elevators, Penfield, Illinois

David Garner, Richard Hayes and Cory Smith, University of Illinois
 Faculty Sponsor: Professor John S. Garner
 Drawings: Caldwell Elevators, Piatt County, Illinois

Daniel Ellingson, University of Arkansas
 Faculty Sponsor: Professor Elam L. Denham
 Drawings: Chaney Log House, Osage, Arkansas

David Haney, John Jensen, Judy S. I. Yeoh and Kui Mew Wong, University of Arkansas
 Faculty Sponsor: Professor Elam L. Denham
 Drawings: Curran Hall (NR), Little Rock, Arkansas

David Haney, John Jensen, Judy S. I. Yeoh and Kui Mew Wong, University of Arkansas
 Faculty Sponsor: Professor Elam L. Denham
 Drawings: Johnson Mill (NR), Springdale, Arkansas

Charles Bergengren, William MacIntire, Melinda Fike and Brian Fletcher, University of Delaware
 Faculty Sponsor: Professor Bernard L. Herman
 Drawings: Alexander Wilson Agricultural Works, Pencader Hundred, Delaware

Humberto Artigas Hernandez, William K. Collazo, Jaime Fernandez, Jose Luis Ortiz and Olga J Torres
 Colegio de Arquitectos de Puerto Rico
 Faculty Sponsors: Professor Beatrix del Cueto and Professor Jolrge Rigau
 Drawings: Casa Fernando Luis Toro (NR), Ponce, Puerto Rico

Lauri Floth, Paninee Kenny, Andrew Ray, Suk King Yiu, Lyn Thomas, Kate Gibbons Klein, Michael Marshall, Chinasak Tandikul, Bobby Thomas and Cathy Wilson, Texas A&M University
Faculty Sponsor: Professor David G. Woodcock
Drawings: Hammond House (NR), Calvert, Texas

Heather Archer, Janet Averill, Leslie Claytor, John Graham and Betsy Updike, University of Virginia
Faculty Sponsor: Professor K. Edward Lay
Drawings: University of Virginia, Pavilion III (NHL), Charlottesville, Virginia

Phillipe Leon, Jose Fernandez, Dominick Ranieri, Jeffrey Warmington and Eric Slazic, University of Miami
Faculty Sponsor: Professor Harold Lewis Malt
Drawings: Bonnet House (NR), Fort Lauderdale, Florida

Dixon Alvarino, John Bellamy, Julio Berdeal, James Black, D. K. Blackey, Lewis Brown, Sid Corhern, Eugene Dandula, D. Everhard, James Ferguson, Larry Freedman, Stuart Grant, Steve Gray, Doyle Harper, David Jass, Mark Johnson, Glenn Keyes, E. F. Krause, Kha Le-Huu, Bill Leuthold, E. J. Marsh, Rudy Massengill, Nathan McMullen, S. Norris, Charles Quagliana, Robert Ray, Mikos Scheib, Steve Schuyler, Randy Sender, John Sklanka, Doug Snyder, Susan Turner, Alan Urda, Steve Waldoch, and Andy Williams, University of Florida
Faculty Sponsor: Professor F. Blair Reeves
Drawings: Maitland Art Center (NR), Maitland, Florida

Edward L. Hengten, Jr., Florida A&M University
Faculty Sponsor: Professor Linda Roach
Drawings: Princeton Railroad Station, Miami, Florida

The cash awards of \$500 for first place, \$200 for second, and \$100 for third, are made possible from interest accrued on the Charles E. Peterson Prize Fund. This fund was established with donations from friends of Charles E. Peterson and is administered by The Athenaeum of Philadelphia.

ARTICLES & PUBLICITY

Books:

- Eric DeLony, Ellen Boone, Alice Keyes. HAER Checklist: 1969 - 1985: A Listing of Sites, Structures and Objects Documented by the Historic American Engineering Record, Washington, D.C.: HABS/HAER Division, National Park Service, 1985. In October 1985, HAER produced a 92-page checklist of the HAER collection, the first catalog to the HAER collection since 1976. Approximately 3,000 copies were distributed to interested parties.

Magazine articles:

- "The HAER Collection. The Historic American Engineering Record is creating an archival record of engineering landmarks before they disappear forever," by Frederick Allen, American Heritage of Invention and Technology, Summer 1986, pp. 17-23. A brief look at the 17-year history of the Historic American Engineering Record. Ten outstanding HAER measured drawings are featured.
- "Architectural History on Film," by Allen Freeman, Architecture, February 1986. A profile of **Jack E. Boucher's** 25 years with the Historic American Buildings Survey.
- "Daredevil with a View Camera Scales Heights Just for the Record," by Michael Leccesse, Chicago Tribune, November 1, 1985. A look at **Jet Lowe**, HAER photographer, and his daring feats while photographing historic sites and structures for the Historic American Engineering Record.

Newsletters:

- "Students Measure Capitol for HABS," Texas Society of Architects, REPORT, June 1986. The first look at a three-year HABS project to document the Texas State Capitol in Austin.

Periodicals:

- "Historic Bridge Recording Project in Ohio," by David A. Simmons, Ohio County Engineer, August 1986, Ohio Historical Society, Columbus, Ohio. A look at HAER's summer project to record historic bridges throughout the State of Ohio.

Newspaper articles:

- "Peerless Rockville. Survey Offers Historic Record," by Eileen McGuckian, Rockville Gazette, October 2, 1985. A short history of the Historic American Buildings Survey and the Historic American Engineering Record programs, their accomplishments and documentation of structures in Montgomery County, Maryland.
- "Boucher's Building Collection," by Victoria Dawson, The Washington Post, April 15, 1986. A look at **Jack Boucher's** 25 years of documenting historic structures for the Historic American Buildings Survey.
- "las dos caras de San Cristobal," by Por Teresa Tio, El Mundo, San Juan, Puerto Rico, Thursday, August 14, 1986. An overview of the HABS team documenting San Cristobal in Old San Juan, Puerto Rico.
- "Aspiring Architects Detail a Local Historical Treasure," by Frank Whelan, Morning Call, Allentown, Pennsylvania, August 31, 1986. A look at the HABS summer project documenting the Asa Packer Mansion in Jim Thorpe, Pennsylvania.

- "Know History of a Downtown Building? Share It With Historian-Architects Team," by D. J. Bice, News-Tribune, La Salle, Illinois, Monday, June 16, 1986. An article informing residents of La Salle, Illinois, of the work of the HAER team and calling for their assistance by offering to the HAER team any historical information they may have on the buildings being documented.
- "I-M Canal Survey Team to Discuss Historic Structures in Area," News-Tribune, La Salle, Illinois, Wednesday, August 13, 1986. The announcement of a slide program, presented by the HAER-Illinois and Michigan Canal recording team, informing residents of La Salle, Illinois, of the HAER project to document structures along the Illinois and Michigan Canal Heritage Corridor.
- "Survey Team Leads Group on Tour of Area Historic Spots," News-Tribune, La Salle, Illinois, Friday, August 22, 1986. An article on the HAER-Illinois and Michigan Canal recording team and their slide presentation to Illinois Valley residents on aging historic commercial structures in the canal cities of La Salle, Peru, Utica, Ottawa, and Marseilles, Illinois.

Other:

- "A Tradition of Excellence in Documentation," CRM Bulletin, Volume 9, No. 3, June 1986, National Park Service Technical Bulletin, 24 pages. Intended for the National Park Service's cultural resources managers, this issue discusses HABS and HAER, a typical recording summer, HABS recording of the San Antonio missions, recording historic landscapes, recording historic ships, and other articles.

EXHIBITS

- On Wednesday, October 1, 1986, ALASKA DAY was observed with a reception and an exhibit of HABS/HAER measured drawings and photographs of structures in Alaska. Hosted by the Alaska State Society, Senator Ted Stevens, Senator Frank Murkowski, and Congressman Don Young of Alaska, the observance was held in the Gold Room in the Rayburn House Office Building, where NPS Director William Penn Mott, Jr. presented full-size measured drawings to the senators and congressman. The drawings and photographs exhibited were the results of recording projects conducted by the NPS Alaska Regional Office, in cooperation with HABS/HAER, and will be deposited in the HABS/HAER collections at the Library of Congress. **Jet Lowe** was the photographer. **Robert Spude**, historian with the Alaska Regional Office, and **Kim Hoagland**, architectural historian with HABS/HAER, were the project supervisors.
- At the 1986 annual meeting of the Society of Industrial Archeology in Cleveland, Ohio, approximately 55 photographs taken by **Jet Lowe** were on exhibit. Lowe, HAER staff photographer, has captured through the eye of his large format camera the industries and infrastructure of Cleveland. Currently on loan to the Western Reserve Historical Society, the exhibit remains on display due to the interest shown by the general public.

HABS/HAER EQUIPMENT

The HABS/HAER word processor/micro processor systems was expanded from four units to 14. HABS/HAER purchased 10 ITT micro-computers to enable its staff to produce improved historical reports. These computers will be also used in financial tracking by project leaders.

COOPERATIVE AGREEMENTS

- On October 6, 1986, HABS Branch Chief, Kenneth Anderson, and Texas A&M University Dean of the School of Architecture David Woodcock, signed an agreement for the purpose of encouraging the development of HABS measured drawings by architectural students.
- HABS/HAER and the Missouri State Historic Preservation Office (SHPO) entered into an agreement to photodocument historic structures throughout the State of Missouri. This project was intended to be a prototype of how HABS/HAER could work with SHPO offices. The project was undertaken not only to produce HABS photodocumentation, but to also train the SHPO representative, Mr. James Denny, an accomplished 35mm photographer, in large format architectural photography. HABS photographer Jack Boucher and Mr. Denny produced 500 large format images of 60 historic structures in the course of a month. This project produced an exhibit which opened in Kansas City in conjunction with the annual meeting of the National Trust for Historic Preservation. HABS historian Kim Hoagland was project leader.
- Based on the HABS/HAER-Missouri photodocumentation project, a second project was entered into with the South Carolina State Historic Preservation Office. Photodocumentation by Jack Boucher will be initiated in October 1986. This project was arranged by Deputy State Historic Preservation Officer Christie Fant and is being coordinated by Mary Watson Edmonds. HABS/HAER historian Catherine Crawford is project leader.
- An agreement was entered into with the National Trust for Historic Preservation to publish a book on HAER photographer Jet Lowe's most outstanding photographs. Entitled The Industrial Eye, the book is under the overall supervision of Dianne Maddex of the National Trust's Preservation Press. Publication is scheduled for late 1986. HABS/HAER project leader is Sally K. Tompkins. Text and captions are being prepared by HAER historian Gray Fitzsimons.
- An agreement was entered into in May 1986 with the National Trust for Historic Preservation to place students from the Trust's Yankee Intern Program on HABS/HAER summer projects conducted in the New England States. The first Yankee Intern, Michael P. O'Beirne, to serve on a HABS/HAER team worked on the HAER Boott Mill recording project in the Lowell National Historical Park in Lowell, Massachusetts. HAER historian William Lebovich is project leader.

- US/ICOMOS and HABS/HAER continued their cooperation on the student exchange program. This program was initiated by these two organizations two years ago and has grown significantly. HABS/HAER provided the largest support for this program, sponsoring nine of the 12 exchange students hosted during the summer of 1986. Students came from Canada, West Germany, Great Britain, Ireland, and Scotland. The program was initiated by Terrie Morton, Chairman, US/ICOMOS, and is currently being supervised by Russell Kuene. Hope Headley is program officer. HABS/HAER coordinator is Paul Dolinsky.
- HABS/HAER and the Preservation Institute of Nantucket, under the direction of Blair Reeves, continued a long supportive tradition. Sally K. Tompkins, Deputy Chief, HABS/HAER, instructed students on architectural inventories.
- The Maritime Office, National Trust for Historic Preservation, and HABS/HAER entered into an agreement to develop a maritime recording program within HABS/HAER. During the 1930s, the Historic American Merchant Marine Survey (HAMMS) was patterned after HABS and successfully recorded 455 vessels during the period of 1936-1937. It is now the intent to revive that function without necessarily reviving the name. Ms. Marcia Meyers and Ms. Lynn Hickerson represent the Trust's Maritime Program. HABS/HAER also entered into a cooperative agreement with Mystic Seaport in Connecticut to jointly prepare guidelines on historical documentation of maritime resources. Mr. Revell Carr, Director of Mystic Seaport, is representative for that organization. Sally K. Tompkins is HABS/HAER coordinator.
- HABS/HAER continues to work with the Center for Historic Architecture and Engineering at the University of Delaware. Under the direction of Dean David Ames and Professor Bernie Herman, this center emphasizes the documentation of endangered vernacular structures in the Mid-Atlantic States.
- HABS/HAER also continues to work with Professor Edward Lay at the University of Virginia. Professor Lay's course in measured drawings has produced many HABS/HAER summer employees and Charles E. Peterson Prize winners. In addition, Professor Lay continues to document the historic structures of the central Virginia area, particularly the architecturally rich area of Albemarle County.
- HABS/HAER continues to work with Professor John Garner and his students at the University of Illinois, Champaign-Urbana. HABS/HAER documentation is used to assist in the training of architectural students and to aid in the preservation of select communities in the State of Illinois. Like the University of Virginia, the University of Illinois program has produced numerous Charles E. Peterson Prize entries and HABS/HAER summer employees.
- In FY 1987, long-time HABS supporter Blair Reeves, from the University of Florida, has agreed to donate the results of 15 years of measured drawings to the HABS permanent collection. The drawings will be presented to HABS in 1987.

- In FY 1986, the largest, single project undertaken by HABS/HAER was completed. Initiated in 1982, the Department of the Army Material Command (then known as DARCOM) asked HABS/HAER to inventory all of their 48,000 structures at 74 installations and to document to HABS/HAER standards the most significant of these holdings. Approximately one million dollars was transferred to HABS/HAER to accomplish those purposes. A contract was let to the firm of Building Technology, Inc. of Silver Spring, Maryland, and the work proceeded on schedule and without cost overrun. Eight thousand inventory cards were completed and documentation was produced on numerous sites of interest to those concerned with the history of American technology, such as the V-2 launch site and Trinity Site (the location of the first nuclear detonation), both at White Sands; the black powder manufacturing plant at Picatinny Arsenal, New Jersey, and numerous others. This project was awarded a Preservation Award by the National Trust for Historic Preservation in 1984. The DARCOM project was the brainchild of DARCOM Real Estate Officer Stanley Fried. HABS/HAER program manager was Sally Tompkins and HAER historian Robie Lange served as project leader. Successful completion of this very large undertaking would not have been possible without the assistance of NPS contracting officer John Thomas and Building Technology, Inc. manager Bill Brenner.

- At the request of Blaine Cliver, Regional Architect in the NPS North Atlantic Regional Office, HABS/HAER provided photographic coverage of the restoration of the Statue of Liberty. Every three months, HAER photographer Jet Lowe would climb the scaffolding, assisted by HAER project leader Eric DeLony, to take large format photographs of the restoration work. These photographs became the most popular photographs in the HAER collection, eventually appearing in over twenty publications, including the cover of LIFE magazine.

NEW FACES

CATHERINE A. CRAWFORD, HABS/HAER Historian, from the Montgomery County Historic Preservation Commission and the University of Maryland Graduate School.

G. GRAY FITZSIMONS, HAER Historian/Engineer, from the Office of Public Archeology and the University of Washington Graduate School.

RUDD M. LONG, Architect, ICOMOS Intern, from the University of Texas at Arlington.

TAMMY D. WASHINGTON, Clerk-Typist, from temporary assignment in support of HABS/HAER summer operations to permanent status.

ANDREW F. WENCHEL, Architect, from University of Oregon

PEOPLE ON THE MOVE

PATRICIA "PAT" CEJKA, Program Assistant, to Fairfax County, Virginia, Government.

AL CHAMBERS, HABS Architectural Historian, one-year sabbatical for research purposes.

KIM HOAGLAND, HABS Architectural Historian, attended the Attingham Summer School in England for a three-week course to study the British country house.

ALICE KEYES, Social Science Technician, to pursue her MBA at Georgetown University in Washington, D. C..

SUSAN McCOWN, HABS Architectural Historian, to pursue other interests.

YOU WIN A FEW! YOU LOSE AN INSTITUTION



On October 11, 1972, the Historic American Buildings Survey hired a clerk-typist who would make a tremendous impact on the program. Not quite five feet tall, Patricia "Pat" Cejka cast a towering presence over the office. Quick-witted and warm-natured, she was gifted with a personality that drew people to her. Pat was always willing to lend an ear to both work-related and personal problems. John Poppeliers, then chief of HABS, realized that Pat had great 'potential.' She possessed a 'take charge' attitude that impressed supervisors. He assigned her tasks that would benefit from her enthusiasm. One, in particular, was that of Summer Program Coordinator. Pat loved it. A lover of children (she has six of her own), each summer she

became "telephone mom" to as many as 90 students who worked on HABS, and later HAER, summer recording projects. She has amassed a collection of friends who will cherish her friendship throughout the years, and she never forgot a name or a voice. She excelled in this task and was assigned additional duties, much to her delight. She later became Program Assistant to the HABS/HAER Division, a position she performed with skill and dedication.

Pat always gave that "extra something" to the HABS/HAER office. No holiday or special occasion went unnoticed. A pumpkin at Halloween, a cake for a birthday, a Christmas tree at Christmas, or a well-planned (and executed) retirement party also made everyone aware of her presence. The annual HABS/HAER picnic at Pat's home to celebrate the ending of a successful summer recording season made the summer complete.

So, on January 17, 1986, a 'monarch' left HABS to lend her talents to the Fairfax County Government in Virginia. Pat is greatly missed not only in the HABS/HAER office, but by HABS/HAER alumni and friends throughout the National Park Service. Gone are the cheerful rhetoric, quick smile, and witty anecdotes. But she left to HABS/HAER a part of her, for the warm thoughts and fond memories still remain.

Pat resides in Fairfax County, Virginia, with her husband, Joseph, and one daughter, Tracey.

* * * * *

SUMMER PROJECTS

HABS/HAER continues its effort to record all primary historic structures in the National Park System, National Historic Landmarks, as well as other historic structures of architectural, engineering, and industrial significance. In 1986, HABS/HAER conducted the largest number of summer projects in its history. These include:

MID-ATLANTIC REGION

Asa Packer Mansion

Jim Thorpe, Pennsylvania

June 9 - August 29

Project Leader: Paul D. Dolinsky, HABS Landscape Architect

Cosponsors: Mid-Atlantic Regional Office, NPS
Asa Packer Mansion
Pennsylvania State Historic Preservation Office

The Asa Packer Mansion is one of the most perfectly-preserved, mid-19th century Italian villas in America. The house still contains its original furniture, chandeliers, stained glass windows, china and silver - an invaluable research tool for scholars of Victorian life. One of the most famous men of his day, Asa Packer (1805-1879) built the Lehigh Valley Railroad, founded Lehigh University, and served as a United States congressman as well as Democratic nominee for President of the United States in 1868. In response to the need for maintenance drawings as well as documentation, John D. Gunnser, Asa Packer Mansion curator, contacted the Historic American Buildings Survey. The project was sponsored by the Lion's Club of Jim Thorpe, Pennsylvania; the Pennsylvania Museum and Historic Commission; the Mid-Atlantic Regional Office of the National Park Service, and Benjamin Walbert, III, AIA. Thirteen drawings, including floor plans, sections, elevations and details, were completed during the summer. Future documentation will include more architectural details, as well as completed photographic coverage.

Team Members:

Timothy Buehner, Supervisory Architect, Ball State University
Patrick P. Koby, Architecture Technician, University of Oregon
Sandra Moore, Architecture Technician, University of British Columbia,
Canada (US/ICOMOS)
Eric A. Zehrung, Architecture Technician, University of Michigan

Eisenhower National Historic Site

Gettysburg, Pennsylvania

June 2 - August 22

Project Leader: Kenneth L. Anderson, AIA, Chief, HABS

Cosponsors: Mid-Atlantic Regional Office, NPS
Eisenhower National Historic Site

Measured drawings of the Eisenhower Main Barn and Farms 2 and 3. In addition to site and floor plans, sections and elevations, framing plans were also developed for each of the structures.

Team Members:

Joseph D. Balachowski, Architect, University of California, Los Angeles
Alfredo O. Marr, Architect, Notre Dame University
Reinhardt O. Muir, Architect, Texas Tech University
Roland P. Smith, Supervisory Architect, Ball State University

Gettysburg National Military Park

Gettysburg, Pennsylvania

June 2 - August 22

Project Leader: Kenneth L. Anderson, AIA, Chief, HABS

Cosponsors: Mid-Atlantic Regional Office, NPS
Gettysburg National Military Park

This was the third year of an anticipated four-year recording effort to document farm complexes that have survived since the Gettysburg battle. This summer's team concentrated on documenting bank barns and the Culp farm. The recording approach has been the same the last three summers, to document construction details. This has been accomplished by graphically removing the siding to reveal the historic framework of these structures.

Team Members:

John S. Anderson, Supervisory Architect, Montana State University
Glenn E. Ovitt, Architecture Technician, University of California, Berkeley
Robert E. Rice, Jr., Architecture Technician, University of Maryland

Kaymoor Coal Mine
New River National River

Oak Hill, West Virginia

June 2 - August 22

Project Leader: Eric N. DeLony, Principal Architect, HAER

Cosponsor: New River Gorge National River

Sixteen sheets of measured and interpretive drawings of this early 20th century coal mine were prepared to HAER standards. They will be supplemented by 80-100 5x7" large format photographs and 31 pages of historical data, all of which will contribute to the Historic Structures

Report being prepared for the site. Kaymoor is the first coal mine to be documented by HAER and may be the first to be interpreted by the National Park Service. In addition to being a wild and scenic river, and one of the best white-water rafting rivers in the eastern United States, New River Gorge was once the heart of the smokeless coal industry in West Virginia. Some 37 mines were then located in the gorge area. Former Park Superintendent Jim Carrico (now Superintendent, Big Bend National Park, Texas) and Chief Ranger for Interpretation Gene Cox (now Midwest Region Chief of Interpretation) were instrumental in bringing HAER to the park. Chief Historian Ed Bearss and Assistant Chief Historical Architect Randy Biallas helped organize the multi-office, multidisciplinary approach to preparing a Historic Structures Report.

Team Members:

Mabel A. Baiges, Architecture Technician, Kansas State University
Jack R. Bergstresser, Supervisory Historian, Auburn University
Donald F. Kraft, Supervisory Engineer, Columbia University
Michael O'Boyle, Architecture Technician, University College of Dublin,
Ireland (US/ICOMOS)
Richard R. Sarian, Graphic Designer, Cleveland Institute of Art
Benita C. Welch, Architecture Technician, University of Illinois,
Champaign/Urbana
John Bowie, AIA, Project Consultant, Wallingford, Pennsylvania

Lowell National Historical Park

Lowell, Massachusetts

June 9 - August 29

Project Leader: William W. Lebovich, Architectural Historian, HAER

Cosponsor: Lowell National Historical Park

1986 was the third and final year dedicated to documenting the Boott Mill complex. The 68 measured drawings produced by this project will be used to assist the park in its leasing program. Twenty-four 5x7" large format photographs were taken to supplement the drawings. Boott Mill derives its historical significance from its pivotal role in the industrialization of 19th century America, its large size, and its high degree of integrity. Mr. Bill Barlowe, IV., AIA, Chief Historical Architect at the Lowell National Historical Park, initiated and secured funding for the project.

Team Members:

Wade P. Freitag, Architecture Technician, University of Oregon
J. Scot MacRae, Architecture Technician, Clemson University
John T. McLaren, Architecture Technician, University of Washington
Michael P. O'Beirne, Architecture Technician, Rhode Island School of
Design, Yankee Intern, National Trust for Historic Preservation
Timothy P. Short-Russell, Supervisory Architect, Texas Tech University

Manchester Mill
June 2 - August 22

Richmond, Virginia

Project Leader: Robie S. Lange, Historian, HAER

Cosponsor: U. S. Army Corp of Engineers

Manchester Mill, constructed in the 1830s, is one of the oldest textile mills in the South. The HAER team documented the site with 9 sheets of measured and interpretive drawings, 20 5x7" large format photographs, and 35 pages of historical data.

Team Members:

Deborah J. Cooper, Architecture Technician, University of Illinois,
Urbana/Champaign
Michael T. Hamilton, Architect, University of Notre Dame
Joseph A. Rodriguez, Supervisory Historian, University of California

Maritime Recording Project
June 2 - August 29

Mystic, Connecticut

Project Leaders: Sally K. Tompkins, Deputy Chief, HABS/HAER
Richard K. Anderson, Architect, HAER

Cosponsors: National Trust for Historic Preservation, Maritime
Program
Mystic Seaport Museum, Inc.

This was HABS/HAER's first maritime recording effort. The procedures employed by the summer team will be used to develop standards and guidelines for measuring historic ships throughout the United States. The pilot schooner, ALABAMA, moored off Vineyard Haven, Massachusetts, was documented with 10 sheets of measured drawings and 5x7" large format photography.

Team Members:

Christopher A. Cysewski, Architecture Technician, Texas A&M University
Elizabeth M. Kunin, Architecture Technician, Illinois Institute of
Technology
Deborah M. Rehn, Supervisory Architect, Washington University

Maryland State House
June 16 - September 5

Annapolis, Maryland

Project Leaders: Kenneth L. Anderson, AIA, Chief, HABS
Paul D. Dolinsky, Landscape Architect, HABS

Cosponsors: Maryland State Archives
Artistic Properties Commission of the State House Trust

The HABS team completed the second of a two-year recording project at the Maryland State House, the initial portion of the building dating to 1772. While the first summer emphasized architectural features, plans, elevations and sections, this summer, the HABS team focused on detailing the construction of the dome, reflective ceiling and ornate skylight plans. The unusual framing plan of the dome has been documented by the HABS team.

Team Members:

Nancy Bramucci, Honorary Team Member, Maryland State Archives
Mary S. Cerrone, Architecture Technician, University of Virginia
Alan W. Halvorsen, Architecture Technician, University of Illinois,
Champaign/Urbana
Michael T. Webb, Architecture Technician, Virginia Polytechnic Institute
Andrew F. Wenchel, Supervisory Architect, University of Oregon

Monumental Church
June 9 - August 29

Richmond, Virginia

Project Leader: Paul D. Dolinsky, Landscape Architect, HABS

Cosponsors: Department of Conservation and Historic Resources,
State of Virginia
Historic Richmond Foundation

Built as a memorial to 72 victims of a fire in a theatre that once stood at the site, the 1812 Monumental Church is considered to be one of the finest and individualistic Neoclassical structures in the United States. Robert Mills designed the spartan octagonal auditorium, using unique architectural massing and details of his own creation, and covered it with a 70' diameter vertically laminated wood dome, based on a design by Philibert Delorme.

The building is currently vacant and, in an attempt to determine what they actually had, as well as maintain and find a reuse for it, the Historic Richmond Foundation, under the direction of John G. Zehmer, and the Virginia Landmarks Commission, under the direction of H. Bryan Mitchell, sponsored the HABS documentation project. Twenty-six sheets of drawings, including plans, sections, elevations, details, and dome analysis drawings were completed during the summer of 1986.

Because of the success of this summer's project, future documentation projects are being planned in Richmond.

Team Members:

Flumberto Artigas, Architecture Technician, University of Puerto Rico
Jane Carmichael, Architecture Technician, University of Edinburgh, England,
(US/ICOMOS)
Gilda Hoeh, Architecture Technician, California Polytechnic State
University
Mark W. Igeski, Architecture Technician, University of Illinois,
Champaign/Urbana
Julie D. Perkins, Supervisory Architect, Howard University

Ohio and Erie Canal

Cuyahoga Valley National Recreation Area

Brecksville, Ohio

June 16 - September 5

Project Leader: G. Gray Fitzsimons, Historian/Engineer, HAER

Cosponsors: Midwest Regional Office, NPS
Cuyahoga Valley National Recreation Area

In 1985, HAER entered into an agreement with Ed Adleman, NPS Historical Architect of the Cuyahoga Valley National Recreation Area, and Francis A. Ketterson, Chief, Cultural Resources Management Division, Midwest Regional Office, National Park Service, to document historically significant engineering and industrial sites within the national recreation area's boundaries. The documentation was to serve two purposes: first, to provide the Library of Congress with a permanent record of important remains of the nation's engineering and industrial past and, second, to provide the National Park Service with drawings and large format photographs of significant sites that may be rehabilitated as part of a cyclic maintenance program.

Having produced drawings of the 1905-07 (expanded 1925-27) Jaite Paper Mill during the summer of 1985, this summer HAER focused on the Ohio and Erie Canal (1827-1913) and Alexander's (Wilson's) Grist Mill, an ante-bellum grist mill located along the canal. Seven sheets of drawings (plans, elevations, and sections) were produced of four canal locks (#29, #37, #38, and #39), supplemented by 12 large format photographs. In addition, a historical report was produced on the canal, focusing on the technology of lock construction and how the locks were altered over time.

The team also produced seven sheets of plans, elevations and sections and a historical report of the mill as it operated from ca. 1900 to 1940 as a feed mill. Now used as a shop for selling seed and bird feed, the mill continues to grind, mix and bag its products, but only to a limited extent. Much of the late 19th- and early 20th century milling machinery is no longer operating.

Team Members:

Karen T. Cline, Architecture Technician, Kent State University
William F. Conway, Supervisory Architect, North Dakota State University
Carol Poh Miller, Historian, George Washington University
Marcy L. Schulte, Architecture Technician, North Dakota State University

Ohio Historic Bridges

State of Ohio

June 9 - August 29

Project Leader: Eric N. DeLony, Principal Architect, HAER

Cosponsors: Ohio Department of Transportation
Ohio Division Office, Federal Highway Administration
Ohio State Historic Preservation Office
Ohio State University, School of Architecture

Envisioned as a potential pilot project having national impact, this project documented the most significant bridges throughout the State of Ohio. Twenty-one sheets of measured drawings are supplemented by 13 archivally-processed 8x10" large format photographic copies of select existing bridge drawings, 114 4x5" large format photographs, and 156 pages of written historical data. Of invaluable assistance in husbanding the project through the Ohio Department of Transportation were Byrd Finley, Jr., Bob Allen, Jr., and Karen Young of the Bureau of Environmental Services; and David Simmons and Ray Luce of the Ohio State Historic Preservation Office also provided invaluable assistance to the team.

Team Members:

Louise Taft Cawood, Photographer, Louisiana Tech University
Christopher P. Collins, Architecture Technician, Ohio State University
Miriam Fitzpatrick, Architecture Technician, University of Dublin, Ireland
(US/ICOMOS)
Randall S. Gooden, Supervisory Historian, West Virginia University
Frances Jones, Architecture Technician, Royal Commission on Historical
Monuments, England (US/ICOMOS)
Charissa Y. Wang, Architecture Technician, University of Maryland

MIDWEST REGION

Illinois and Michigan Canal

Northern Illinois

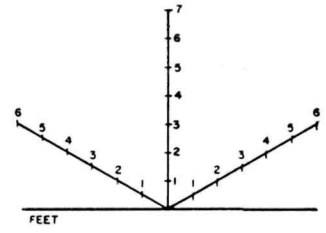
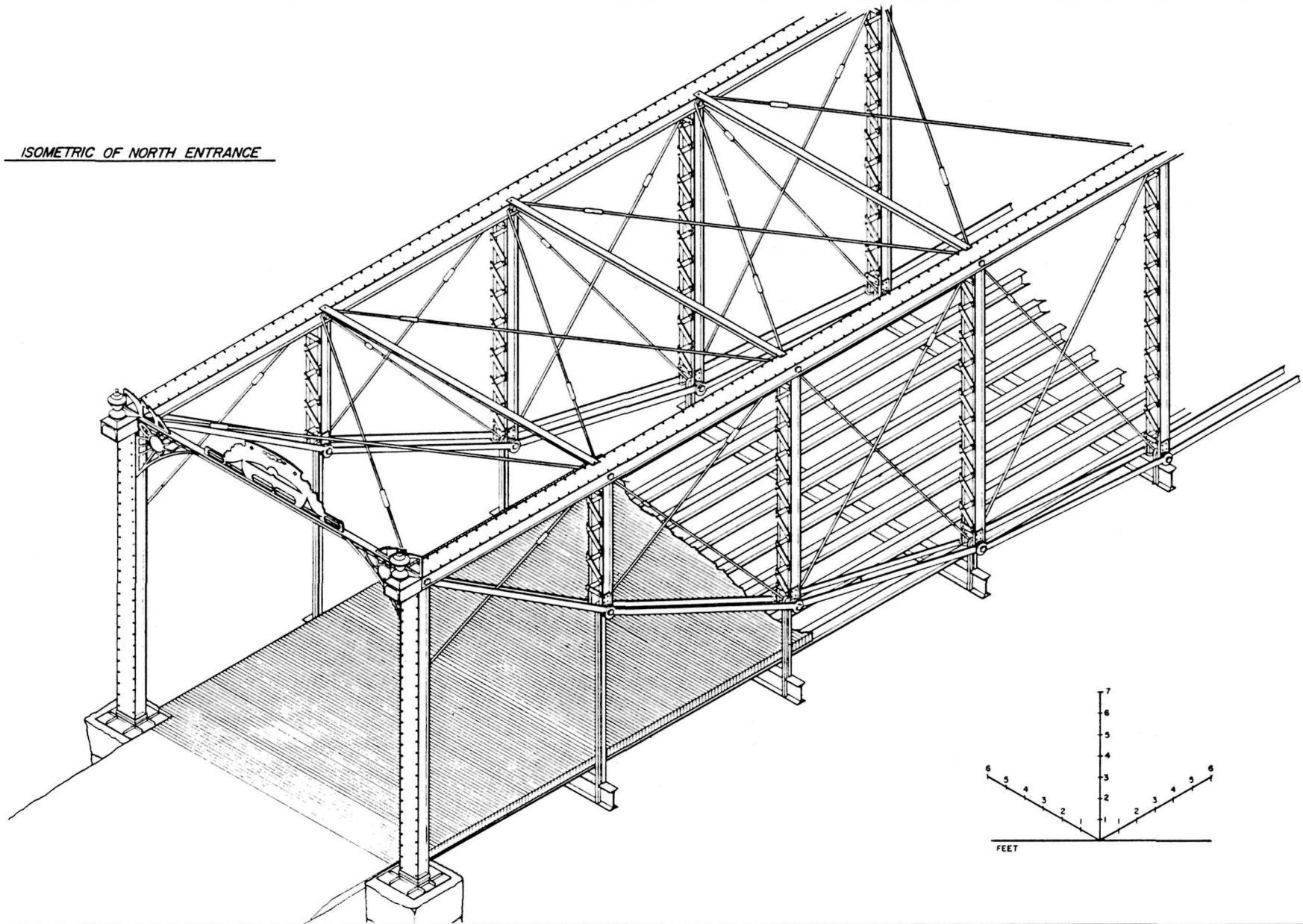
June 9 - August 29

Project Leader: G. Gray Fitzsimons, Historian/Engineer, HAER

Cosponsor: Midwest Regional Office, NPS

Created by an Act of Congress and signed into law by President Reagan in 1984, the Illinois and Michigan Canal National Heritage Corridor extends some 100 miles from Chicago westward to LaSalle-Peru, Illinois. The Heritage Corridor's central focus is the Illinois and Michigan (I&M) Canal

ISOMETRIC OF NORTH ENTRANCE



REPRODUCED BY: Christopher P. Collins, 1966
OHIO HISTORIC BRIDGE RECORDING PROJECT
UNIVERSITY OF CINCINNATI
UNIVERSITY OF CINCINNATI, OHIO

JOHN BRIGHT NO. 1 IRON BRIDGE 1884-85
ON HAVENSPOUR ROAD (TR 283) OVER POPLAR CREEK, 3 MILES NORTHEAST OF CARROL
FAIRFIELD COUNTY
OHIO

HISTORIC AMERICAN
ENGINEERING RECORD
OH-44
SHEET
5 - 6

IF REPRODUCER PLEASE CREDIT HISTORIC AMERICAN ENGINEERING RECORD NATIONAL PARK SERVICE NAME OF BRIDGE, DATE OF THE DRAWING

which was completed in 1848 and opened commercial traffic between the Great Lakes and the Gulf of Mexico via the Mississippi and Illinois rivers. In the summer of 1985, HABS/HAER initiated a National Park Service inventory of historic buildings in two of the seventeen canal towns, as well as a survey of the canal, railroad, and industrial structures along the canal right-of-way.

In 1986, HAER inventoried the central business districts of LaSalle, Peru, Utica, Ottawa, Marseilles, and Seneca, Illinois, the agricultural buildings in Utica Township, and the transportation and industry along the I&M from Ottawa to Chicago. Over 1,500 sites were surveyed, and overview histories were prepared for each segment of the project. Three sheets of measured drawings of the Illinois Central Railroad's LaSalle Freight Depot (1857) were produced, as well as 11 sheets of measured drawings of Ottawa Silica Company's Sand Processing Plant (1917, 1927-29). Select historic structures were also documented to HAER standards through the use of 97 5x7" and 4x5" large format photographs.

Lee Hanson, the newly-appointed NPS Executive Director of the Heritage Corridor, was instrumental in carrying out the project, as well as Jim O'Toole, Superintendent, Lincoln Home National Historic Site in Springfield, Illinois, and his administrative assistant, Friday Wiles, who aided in working out some of the project's logistical problems. David Carr, Superintendent, I&M Canal State Park in Morris, Illinois, gave the team ready access to the park archives. Edmund Thornton, Chairman, Ottawa Silica Foundation in Ottawa, Illinois, aided the architects in documenting Ottawa's silica sand industry. And Jerry Adelman, Executive Director, Upper Illinois Valley Association in Chicago, Illinois, provided his expertise and generously shared his office's resources on historic buildings in canal towns.

Team Members:

Frances P. Alexander, Historian, George Washington University
Rachel D. Barber, Historian, Lawrence University
Mary C. Brown, Historian, George Washington University
Joseph R. DeRose, Historian, Loyola University
Michael Drasnin, Architecture Technician, University of California, Berkeley
Anne L. Frischkorn, Clerk-Typist, Lewis University
Clifford P. Goodhart, Supervisory Architect, University of Florida
David M. Kelliher, Architecture Technician, Carleton College
Sara A. Leach, Historian, University of Virginia
Elizabeth L. Miller, Supervisory Historian, University of Florida
Donna M. Neary, Historian, Loyola University
John A. Nicolay, Historian, Virginia Polytechnic Institute
Kelly J. Sarver, Architect, University of Oregon
Charles Scott, Supervisory Historian, University of Pennsylvania
Marguerite S. Shaffer, Historian, University of Pennsylvania
Mary M. Stolberg, Historian, University of Virginia
Mary J. Turner, Historian, University of Georgia
Thomas Whitaker, Architecture Technician, The National Trust (England, Wales, and Northern Ireland) (US/ICOMOS)

Lincoln Home National Historic Site

Springfield, Illinois

This summer, HABS conducted two recording projects at this site:

June 2 - August 22

Project Leader: Kenneth L. Anderson, AIA, Branch Chief, HABS

Cosponsors: Denver Service Center, NPS
Lincoln Home National Historic Site

The Lincoln Home team worked with the Denver Service Center historical architect to produce annotated drawings revealing the six stages of development the Lincoln Home has experienced since it was constructed as a 1-1/2-story cottage by Rev.. Charles Dresser in 1839 to its present two-story condition.

June 9 - August 29

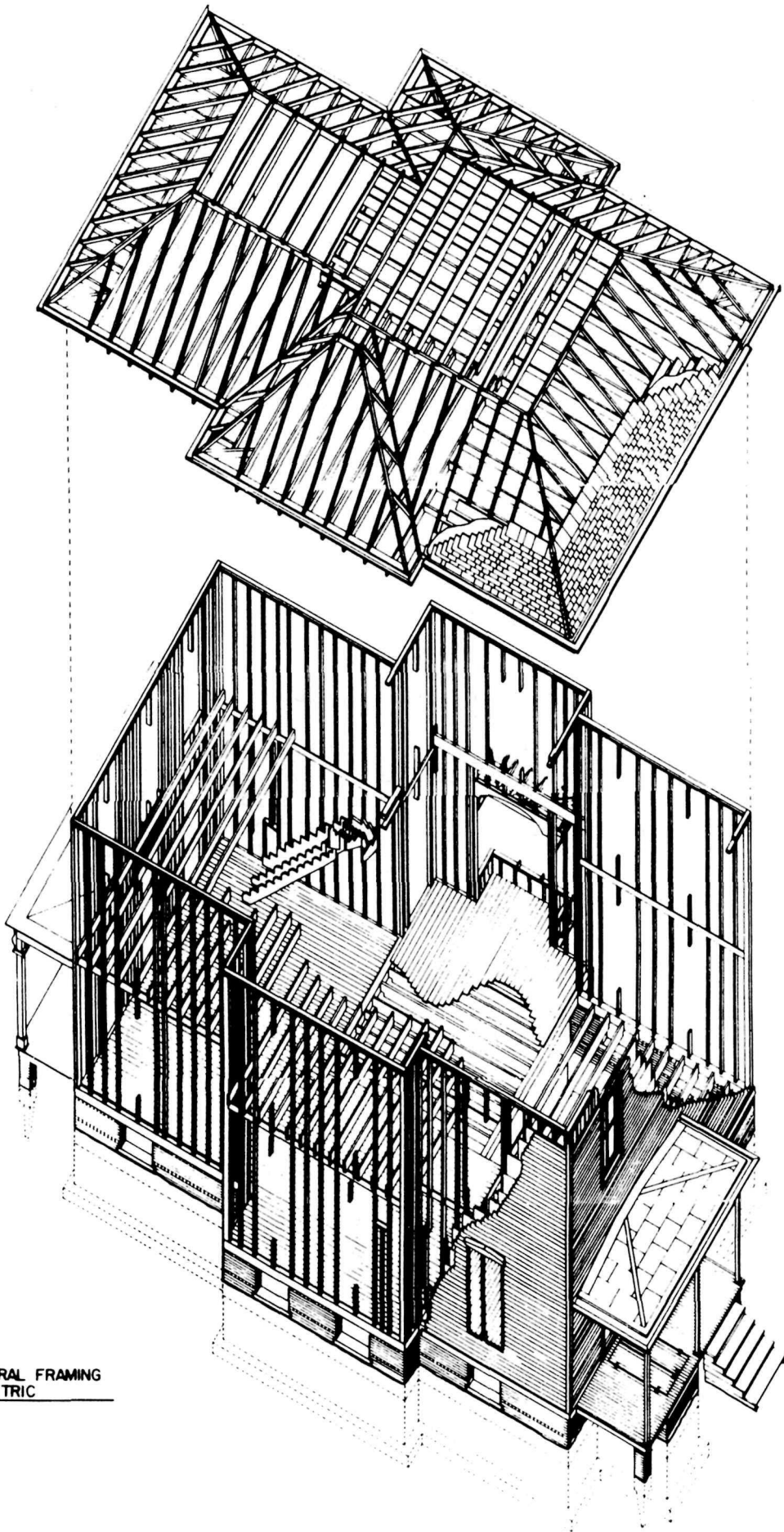
Project Leader: Kenneth L. Anderson, AIA, Branch Chief, HABS

Cosponsors: Midwest Regional Office, NPS
Lincoln Home National Historical Site

The Lincoln Home National Historic Site team continued the recording approach initiated by the 1985 HABS team--documenting individual buildings and producing street facades showing the relationship of existing residences and open spaces along the main street of the historic district. The drawings produced during these last two summers will be used to support the rehabilitation of these historic buildings and the ongoing Historic Properties Leasing Program at the park.

Team Members:

Lesley M. Gilmore, Architecture Technician, University of Illinois, Chicago
Douglas J. Lister, Supervisory Architecture Technician, Tulane University
Brad W. McCormick, Architecture Technician, University of Illinois,
Champaign/Urbana
Rosemary J. O'Brien, Architecture Technician, University of Illinois,
Urbana/Champaign
Ellen F. Stoner, Architecture Technician, University of Illinois,
Urbana/Champaign



STRUCTURAL FRAMING
AXONOMETRIC

IF REPRODUCED PLEASE CREDIT: HISTORIC AMERICAN BUILDINGS SURVEY, NATIONAL PARK SERVICE, NAME OF DELINEATOR DATE OF THE DRAWING

NATIONAL CAPITAL REGION

Antietam National Battlefield
June 2 - August 22

Sharpsburg, Maryland

Project Leader: Paul D. Dolinsky, Landscape Architect, HABS

Cosponsors: National Capital Regional Office, NPS
Antietam National Battlefield

On September 17, 1862, the bloodiest day of the Civil War occurred near Sharpsburg, Maryland. Nearly 5,000 people were either killed or injured during the battle at Antietam. This immense carnage left a permanent impact on the beautiful rolling hills and farmland of western Maryland. In memory of this day of infamy, the Antietam National Battlefield was established, together with the Antietam National Cemetery. This national park encompasses many of the farmsteads within the battle area. This combination of a functioning agrarian community impacted by a major historical event lends itself perfectly to a cultural landscape investigation. The National Capital Regional Office of the National Park Service requested the Historic American Buildings Survey to conduct such a project. Numerous park structures, as well as farmstead landscapes, were documented with measured drawings and photographs. The basic directive was to concentrate on buildings existing prior to the battle, but measured drawings and photographs were also completed for the gate lodge of the Antietam National Cemetery designed by Paul Peltz.

This combination of measured drawings and photographs will greatly assist the National Park Service in maintaining and monitoring not only the structures but also the landscape context.

Team Members:

Lori Allen, Landscape Architect, Iowa State University
Janet M. Bloomberg, Architecture Technician, University of Virginia
Phil L. Eschtruth, Architecture Technician, University of Michigan
Richard L. Hayes, Supervisory Architect, University of Illinois,
Champaign/Urbana
Donald D. Searle, Architecture Technician, Clemson University

ROCKY MOUNTAIN REGION

Fair Park, Texas Centennial Expo Buildings
June 9 - August 29

Dallas, Texas

Project Leader: Kenneth L. Anderson, AIA, Branch Chief, HABS

Cosponsors: Friends of Fair Park
Texas Historical Commission

The 1986 HABS Fair Park project is the first of an anticipated multi-year recording effort to document the fair grounds and structures associated

with the Texas State Fair. The 1936 Texas Centennial Exposition buildings were designed to celebrate 100 years of Texas' independence from Mexico. Many of these Art Deco/Moderne-style structures consist of facades and elevations encasing earlier 1905 and 1910 Spanish Romanesque-style fair buildings. This summer, the HABS team recorded the General Exhibits Building (Centennial Building), the Coliseum (Hall of Administration) and entrance pylons along the Esplanade of State.

Team Members:

Thomas Dreesen, Architecture Technician, Technische Hochschule, Darmstadt, Germany (US/ICOMOS)
Leonard M. Kliwinski, Supervisory Architect, Art Institute of Chicago
Cheryl A. Spector, Architecture Technician, University of Texas, Austin

Texas State Capitol
June 2 - August 22

Austin, Texas

Project Leader: Kenneth L. Anderson, AIA, Branch Chief, HABS

Cosponsors: State Preservation Board
Architect of the Capitol

The 1986 HABS Texas Capitol recording project is the first of an anticipated four-summer recording program to comprehensively document the 1888 capitol building. The capitol, designed by Elijah E. Myers, is over 566' long, 288' wide, and 308' tall, and is the largest and most complex building to be recorded by a HABS summer team. This summer's team concentrated on recording the site and floor plans. Future teams will record the elevations, sections, and ornate architectural details of the structure. This project marked the Survey's first summer recording team's use of a computer-aided drafting (CAD) system provided by CONCAD Systems of Austin and resulting in the team's production of 24 sheets of plotted floor plans.

Team Members:

Laura L. Barker, Architecture Technician, Texas A&M University
Forrest J. Benson, Architecture Technician, University of Houston
Marian K. Dombroski, Architect, University of Texas at Austin
Scott D. Hall, Architecture Technician, Texas Tech University
Rudd M. Long, Architecture Technician, University of Texas at Arlington
David R. Maxwell, Architecture Technician, University of Texas at Austin
Carmen L. Posey, Architecture Technician, University of Houston
John P. White, Supervisory Architect, Associate Professor. Texas Tech University

SOUTHEAST REGION

Borough House

June 16 - September 5

Stateburg, South Carolina

Project Leader: Richard K. Anderson, III, Architect, HAER

Cosponsors: Southeast Regional Office, NPS
Borough Plantation Enterprises
South Carolina Department of Archives & History
Sumter County Historical Commission
Bostick Residuary Charitable Trust
Mrs. Richard K. Anderson, Sr.

This effort to document the Borough House plantation complex began with a visit to the house in 1981 by Charles E. Peterson, founder of HAES. The plantation is a virtually intact early 19th century complex, nationally significant because major portions of the main house and six of its dependencies are constructed of pise de terre, or rammed earth. These Greek Revival buildings were documented by a team of seven students and professionals who produced 37 sheets of measured drawings of the house, dependencies, and 18-acre grounds. An additional 67 5x7" large format photographs were taken to supplement existing photography of the complex.

Team Members:

Alejandro L. Busto, Supervisory Architect, Ball State University
Harlen D. Groe, Landscape Architect, Iowa State University
Lourdes M. Mesa, Architecture Technician, University of Illinois,
Urbana/Champaign
Martha F. Moffat, Architecture Technician, Columbia University
Pamela S. Pendergrass, Architecture Technician, University of Tennessee
Lora J. Schiltgen, Landscape Architect, University of Oregon

Mammoth Cave, Saltpetre Works

June 16 - September 5

Mammoth Cave, Kentucky

Project Leader: Eric N. DeLony, Principal Architect, HAER

Cosponsors: Southeast Regional Office, NPS
Mammoth Cave National Park

The HAER team produced 12 sheets of measured drawings and 34 data pages of the 1812-15 saltpetre works located within Mammoth Cave. The drawings will assist in the interpretation of this historic industrial process. Because of the cave environment, the wooden timbers and logs that make up the leaching vats and piping of the saltpetre system are well preserved for structures dating from 1812. Mammoth Cave was a major source of saltpetre to the Dupont gunpowder mills in the Brandywine Valley of Delaware during the War of 1812. Recognizing its national significance, Tom Baltzell, architect with the Park Service's Southeast Preservation Center, arranged for HAER to document the site. Chief Ranger Richard

Strange and his staff at Mammoth Cave facilitated every request of the HAER team as they recorded the site. Invaluable expertise also was provided by the Cave Research Group.

Team Members:

Daniel R. Ellingson, Supervisory Architect, University of Arkansas
Carla B. Hairston, Architecture Technician, Rhode Island School of Design
Marsha A. Mullin, Historian, University of Notre Dame

San Juan National Historic Site
May 27 - August 15

San Juan, Puerto Rico

Project Leader: Kenneth L. Anderson, AIA, Chief, HABS

Cosponsors: Southeast Regional Office, NPS
San Juan National Historic Site

This is the third year that HABS has conducted recording projects, in cooperation with the National Park Service's Southeast Cultural Resources Center, to document fortifications associated with the San Juan National Historic Site. This summer, HABS produced drawings of Castillo de San Cristobal (Santa Teresa Battery and addendum to Fuerte el Abanico drawings) and the outer defense works of Castillo de San Felipe del Morro (addendum to Fortin de San Juan de la Cruz, el Canuello drawings). The drawings produced by these summer teams will support the Historic Structures Report for stabilization efforts of the San Juan National Historic Site.

Team Members:

Orlando Badillo, Architecture Technician, Universidad de Puerto Rico
Terry L. Bailey, Architecture Technician, North Dakota State University
Michael Beary, Architecture Technician, University College of Dublin,
Ireland (US/ICOMOS)
Jose M. Martinez-Canino, Supervisory Architect, HABS/HAER Office
Eric Niemy, Architecture Technician, Carleton University, Ottawa,
Jorge L. Sein, Architecture Technician, The City College of New York

Waterways Experiment Station
June 2 - August 22

Vicksburg, Mississippi

Project Leader: Robie S. Lange, Historian, HAER

Cosponsor: U. S. Army Corps of Engineers

The first of a two-year inventory/documentation project, emphasis was placed on inventorying the instrumentation associated with hydraulic modeling conducted at the Waterways Experiment Station since 1930. The second year's efforts will focus on the documentation of design, construction and use of hydraulic modeling.

Team Members:

Billy Joe Peyton, Supervisory Historian, West Virginia University
Beth Redmond, Historian, Brigham Young University

SOUTHWEST REGION

Boxley Grist Mill
Buffalo National River
June 9 - August 29

Harrison, Arkansas

Project Leader: Eric N. DeLony, Principal Architect, HABS

Cosponsors: Southwest Regional Office
Buffalo National River
Arkansas State Historic Preservation Office
University of Arkansas, School of Architecture

Park Superintendent Alec Gould and Assistant Superintendent Jim Liles have long pushed for preservation of Boxley Mill. Because of their interest, the Park Service's Southwest Region Preservation Center, with the assistance of Tony Crosby, Barry Sulam, Doug Hicks and Tom Vitanza, arranged for the HAER team to document the mill and for the building to be secured and stabilized. The HAER team prepared 22 sheets of measured drawings to help Park managers decide whether to restore this historic Ozark mountain mill.

Team Members:

Daniel B. Delahaye, Architecture Technician, University of Florida
Elam Denham, Supervisory Architect, University of Arkansas
David H. Haney, Architecture Technician, University of Arkansas
Gary E. Kepka, Architecture Technician, Kansas State University

Salinas National Monument
June 16 - September 5

Mountainair, New Mexico

Project Leader: Kenneth L. Anderson, AIA, Chief, HABS

Cosponsors: Southwest Regional Office, NPS
Salinas National Monument

This was the second consecutive summer HABS has fielded a recording team at Salinas National Monument. During the summer of 1985, the team recorded Mission San Gregorio de Abo, and this summer HABS documented the missions of San Buenaventura and San Isidro at Gran Quivira or, as it was known in the 17th century, Pueblo de las Humanas. The church of San Isidro was constructed between 1629 and 1931 and, in 1959, construction was begun on the larger church and convent of San Buenaventura. In 1672, this site was abandoned because of a series of droughts and attacks by hostile tribes of Indians.

Gran Quivira, as the site later became known, was designated a national monument in 1906. In 1923, some of the mission structures were removed and stabilization efforts were started. The drawings produced by this summer's team will assist the Southwest Regional Office in monitoring future deterioration and in stabilizing these historic ruins.

Team Members:

Daniel A. Hernandez, Architecture Technician, UCLA
Jean L. Pike, Architecture Technician, Yale University
Morgan A. Rieder, Supervisory Architect, University of New Mexico

San Antonio Missions
June 2 - August 22

Santa Fe, New Mexico

Project Leader: Kenneth L. Anderson, AIA, Chief, HABS

Cosponsors: Southwest Regional Office, NPS

This is the last summer of a four-summer recording program initiated in 1983 to document the four missions located at San Antonio Missions National Historic Site in San Antonio, Texas -- Mission San Jose y San Miguel de Aguayo, Mission San Francisco de la Espada, Mission Nuestra Senora de la Purisima Concepcion de Acuna, and Mission San Juan de Capistrano. This summer, HABS worked in the Southwest Cultural Resources Center's office in Santa Fe, New Mexico. The HABS team member worked with the Center's regional archeologist and regional historian to annotate the previous summers' drawings and to produce additional interpretive drawings based on research and data obtained from the recently completed Historic Structures Report on the missions.

Team Member:

James N. Ferguson, Architecture Technician, University of Florida

WESTERN REGION

Leland Stanford House
June 9 - August 29

Sacramento, California

Project Leader: Kenneth L. Anderson, AIA, Chief, HABS

Cosponsors: California Office of Historic Preservation
California Department of Parks and Recreation
Stanford Historical Society

HABS and the California Department of Parks and Recreation initiated a five-year recording effort to document the nationally significant historic structures in the State's park system. This program is similar to the programs HABS has with regional offices of the National Park Service to record NPS historic resources. The Leland Stanford house was selected as the site to start this multi-year documentation endeavor.

The Leland Stanford House, once home of the California governor and founder of Stanford University, was constructed in 1857. One of the few 1850s structures remaining in Sacramento, it functioned as governor's residence and office for Governor Stanford and Governor Frederick F. Low. In 1869, the Stanfords commissioned a dramatic renovation of the house in the decorative Second Empire style, with mansard roof and dormer windows constructed over the original flat roof. The house was raised one story to protect it from future floods and the new ground floor served as a ballroom. In 1978 the State of California purchased the property and is presently planning to restore the house. The 1986 HABS team produced documentation consisting of a written history including the preparation of a National Historic Landmark nomination, as well as measured drawings to assist the California Department of Parks and Recreation in developing the Historic Structures Report that will lead to the scheduled restoration of this magnificent house.

Team Members:

Katrinka B. Bourne, Architecture Technician, North Dakota State University
Karen S. Cormier, Supervisory Architect, Temple University
Jonathan C. McMurtry, Architecture Technician, California Polytechnic State University

OTHER PROJECTS

HABS/HAER Data Base Expansion

Washington, D. C.

June 2 - August 29

Project Leader: Ellen Boone Minnich, Head, HABS/HAER Records Section

The HABS/HAER data base, first implemented in 1982, undertook a major expansion during the summer of 1986. The amount of information contained in the data base for each of the 20,000 buildings, structures and sites recorded by HABS/HAER was essentially tripled by the expansion. This undertaking will provide an improved inventory and reference servicing of the HABS/HAER collection and improved user access to the contents of the documentation.

Team Members:

Anne W. Goda, Social Science Technician, George Washington University
Linda G. Hyman, Social Science Technician, George Washington University
Alice Keyes, Lead Social Science Technician, HABS/HAER Office
Roland M. Morgan, Social Science Technician, Roger Williams College
Artelia L. Wilson, Social Science Technician, Smith College

Photogrammetric Images Project
June 2 - August 29

Washington, D. C.

Project Leader: John A. Burns, AIA, Architect, HABS/HAER

This project resolved the treatment of over 1,600 glass photo photographs produced for HABS/HAER over the last twenty-five years but not included into the HABS/HAER collections. This project integrated those stereopairs into the HABS/HAER collections and made them accessible to the public by making over 750 film copy negatives and prints of the plates.

Team Member:

Caroline R. Alderson, Historian, Columbia University

HABS/HAER Measured Drawings Backlog Project
June 2 - August 29

Washington, D. C.

Project Leaders: Kenneth L. Anderson, Chief, HABS
Eric N. DeLony, Principal Architect, HAER

During the summer of 1986, HABS/HAER edited and transmitted to the Library of Congress a total of 65 sheets of measured drawings.

Team Members:

Coy E. Burney, Architecture Technician, University of Maryland
Christian D. Overbey, Architecture Technician, University of Kansas

Gay-McGregor-Allen Log House
June 9 - July 11

Peach Creek, Texas

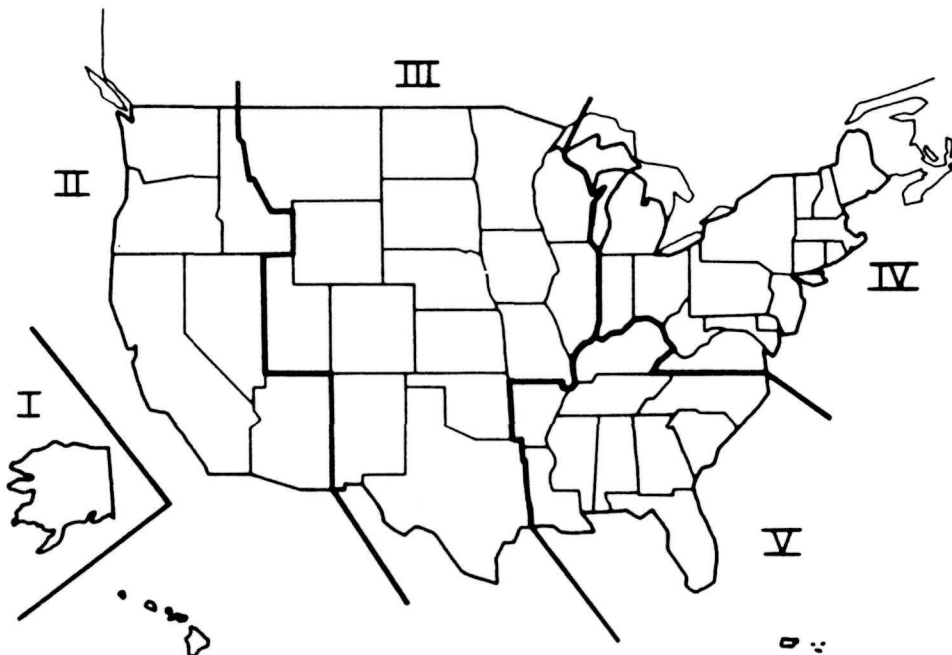
Project Leader: Professor David G. Woodcock, Texas A&M University

Sponsor: Department of Architecture, Texas A&M University

The Gay-McGregor-Allen Log House was built around 1834 and is the oldest surviving structure in Brazos County. A two-crib log house in the Georgia tradition, with porches added later, it is located in the rich Brazos farmland area so favored by early settlers in this part of the state. In addition to record drawings, extensive historical research was undertaken. This is the tenth year that the Department of Architecture at Texas A&M University has conducted a course to produce measured drawings, photographic documentaton and written data on structures and towns near College Station. A Texas Marker nomination is in preparation.

MITIGATIVE DOCUMENTATION PROGRAM

The HABS/HAER office in Washington, D. C. is responsible for recording nationally significant buildings, structures and sites, including National Park Service-administered properties and National Historic Landmarks. Under the provisions of the amended National Historic Preservation Act, Federal agencies are required to produce documentation to HABS/HAER standards on buildings, structures and sites that are listed or eligible for listing in the National Register of Historic Places and that are threatened with demolition or substantial alteration by projects with Federal involvement. The five National Park Service regional offices charged with external historic preservation responsibilities administer the HABS/HAER mitigative documentaton program. The actual work is usually conducted by contractors, supervised by a HABS/HAER Regional Coordinator. The documentation produced is reviewed by the Regional Coordinator and transmitted to the Washington office for inclusion in the permanent HABS/HAER collections.



I. Robert Spude
Alaska Regional Office
National Park Service
2525 Gambell Street
Anchorage, Alaska 99503
Tel.: 907-271-2638

II. Ann Huston
Western Regional Office
National Park Service
450 Golden Gate Avenue
San Francisco, California 94102
Tel.: 415-556-7741

III. Gregory Kendricks
Rocky Mountain Regional Office
National Park Service
655 Parfet Avenue
Denver, Colorado 80225
Tel.: 303-236-8675

IV. Lloyd Chapman
Mid-Atlantic Regional Office
National Park Service
143 South Third Street
Phikadelphia, Pennsylvania 19106
Tel.: 215-597-2334

V. Richard Ramsden
Southeast Regional Office
National Park Service
75 Spring Street
Atlanta, Georgia 19106
Tel.: 404-331-7719

HABS/HAER STAFF ROSTER

Mailing Address: HABS/HAER Division Street Address: Room 6101
National Park Service 1100 L St., NW
P. O. Box 37127 Washington, D.C.
Washington, D. C. 20013-7127
Area Code: (202)

ANDERSON, Kenneth L., AIA	Chief, HABS	343-9603
ANDERSON, Richard K.	HAER Architect	343-9630
BERGSTROM, R. Marlene	HABS/HAER Photographic Assistant	343-9600
BOUCHER, Jack E.	HABS Photographer	343-9614
BURNS, John A., AIA	HABS/HAER Architect	343-9608
CHAMBERS, S. Allen *	HAES Architectural Historian	343-9612
CRAWFORD, Catherine A.	HABS/HAER Historian	343-9609
DAVIS, Judy B.	HABS/HAER Division Secretary	343-9625
DeLONY, Eric N.	HAER Principal Architect	343-9629
DOLINSKY, Paul D.	HAES Landscape Architect	343-9611
FITZSIMONS, G. Gray	HAER Historian/Engineer	343-9628
HOAGLAND, Kim	HABS Architectural Historian	343-9607
HOMAN, Phyllis V.	HABS/HAER Clerk-Typist	343-9621
KAPSCH, Robert J., Ph.D.	Chief, HABS/HAER	343-9606
LANGE, Robert S.	HAER Historian	343-9610
LEBOVICH, William W.	HAER Architectural Historian	343-9617
LONG, Rudd M.	HABS Architect	343-9616
LOWE, John "Jet" T.	HAER Photographer	343-9613
MARTINEZ, Jose M.	HABS Architect	343-9615
MINNICH, Ellen Boone	HABS/HAER Collections Mgt. Spec.	343-9599
TOMPKINS, Sally K.	Deputy Chief, HABS/HAER	343-9604
WASHINGTON, Tammy D.	HABS/HAER Clerk-Typist	343-9619
WENCHEL, Andrew F. **	HABS Architect	343-9633
YEARBY, Jean P.	HABS/HAER Publications Specialist	343-9601

* On sabbatical during Fiscal Year 1987

** To enter on duty in November 1986

This annual report is a statement of the HABS/HAER Division of the National Park Service and does not necessarily include the accomplishments of the other members of the HABS and HAER tripartite agreements: the Library of Congress (Prints and Photographs Division), the American Institute of Architects, and the American Society of Civil Engineers. Users of the HABS/HAER collections may contact Mary Ison or Ford Peatross in the Prints and Photographs Division, Library of Congress, Washington, D. C. 20540, Telephone: 202-287-6399.

Top cover:

North Elevation

Leland Stanford House

Sacramento County

Sacramento California

HABS No. CA-1709

Delineators: Karen Cormier and Paul Dolinsky, 1986

Bottom cover:

Section

Producer Gas Plant

Holston Army Ammunition Plant

Sullivan County

Kingsport, Tennessee

HAER No. TN-10A

Delineator: Robert Ferguson, 1986