

U. S. DEPARTMENT OF THE INTERIOR
NATIONAL PARK SERVICE

**HISTORIC AMERICAN BUILDINGS SURVEY/
HISTORIC AMERICAN ENGINEERING RECORD**

1988 ANNUAL REPORT



Architecture, engineering and technology have made important contributions to America's development. The Historic American Buildings Survey (HABS) and the Historic American Engineering Record (HAER) reflect the Federal Government's commitment to document, understand and, in some cases, preserve, architectural, engineering and industrial sites that are important to our Nation's past. These programs conduct projects to document outstanding examples of this country's architectural, engineering and technological heritage. These projects produce measured drawings, written historical reports, and large format photographs which are made available to the general public through the Prints and Photographs Division, Library of Congress, Washington, D. C. 20540. Users of the HABS and HAER collections may contact the Reference Desk at 202-707-6399.

This report is a statement of the Historic American Buildings Survey/ Historic American Engineering Record (HABS/HAER) Division of the National Park Service for fiscal year 1988 (ending September 30, 1988). It does not reflect the accomplishments of the other members of the HABS and HAER tripartite agreements: the Library of Congress (Prints and Photographs Division), the American Institute of Architects, and the American Society of Civil Engineers.



Director	William Penn Mott, Jr.
Deputy Director	Denis P. Galvin
Associate Director for Cultural Resources	Jerry L. Rogers
Deputy Associate Director for Cultural Resources	Rowland T. Bowers
Chief, HABS/HAER Division	Robert J. Kapsch

National Park Service
U. S. Department of the Interior

ACKNOWLEDGEMENTS: This report was compiled by Jean P. Yearby, with the assistance of Paul D. Dolinsky. The compilers wish to acknowledge the detailed review and recommendations of Holly K. Chamberlain, Frederick C. Engle, Catherine C. Lavoie, and Sally K. Tompkins, as well as the many other contributors from the HABS/HAER staff.



IN REPLY REFER TO:

United States Department of the Interior

NATIONAL PARK SERVICE

P.O. BOX 37127

WASHINGTON, D.C. 20013-7127



HISTORIC AMERICAN BUILDINGS SURVEY/HISTORIC AMERICAN ENGINEERING RECORD

1988

MESSAGE FROM THE CHIEF

Robert J. Kapsch, Ph.D.

FY 1988 was the last full year of the Reagan Administration. This is an appropriate time to review how HABS/HAER has fared over the past eight years.

In November 1980, HABS/HAER was at its lowest ebb. Two-thirds of the Division's budget and staff had been eliminated, no funds were available for recording or processing the sizeable backlog, and the HABS and HAER advisory committees had been abolished. President Reagan's mandate for less funding for non-military agencies promised even harder times ahead.

Eight years later, HABS/HAER was at its highest point. Record numbers of new projects are being undertaken, new areas of documentation are being initiated, and transmittals to the Library of Congress continue at high levels. Significantly, HABS/HAER documentation has reached new levels of excellence.

In summary, during the eight years of the Reagan Administration, HABS/HAER:

- o Transmitted documentation on 11,000 historic structures.
- o Fielded 150 summer teams, utilizing over 600 professionals.
- o Developed reimburseable and donated funding exceeding \$6 million.

How this was done, and who did it, is worth telling.

The most sweeping changes of the new Reagan Administration were expected in the first 100 days. It was imperative to make contact with the transition team. Since the team was composed of westerners who rarely visited Washington, this was difficult. Contact was finally made through friends of HABS/HAER. "We've spent enough money on old houses," I was told. "But," a transition team member added, "your program is safe." Weeks later, the Heritage Conservation and Recreation Service and dozens of its programs were abolished. HABS/HAER was transferred back into the National Park Service.

HABS/HAER was warmly welcomed back by NPS. First, a task force was organized to examine the historic preservation programs. This task force recommended that HABS/HAER recording be centralized in Washington, D. C., a decision that was approved by NPS Director Russell Dickenson in June 1982.

Although we now had the authority to record, HABS/HAER still didn't have the funds. To obtain documentation funding, we had to go to outside sources. At that time, Sally Tompkins developed a \$2.5 million program for inventorying and documenting the historic structures of one of the Army's major commands, the U. S. Army

Material Development and Readiness Command (DARCOM), now Army Materiel Command (AMC). This four-year program was six to seven times larger than the previously largest project undertaken. Although at that time a relatively junior HABS historian, Sally managed this program such that quality products were produced on schedule and within budget. For this and numerous other contributions to HABS/HAER, she was later named Deputy Chief.

It was also during the summer of 1982 that we began planning a central focus on our efforts to revitalize HABS/HAER. We chose the 50th anniversary of HABS, to be celebrated in November 1983. The central project was to be the development of the HABS/HAER data base. This was done on a crash basis, using donated funds. The first product was used by the Library of Congress to publish Historic America, the first catalog to the HABS collection since 1941. In Washington, D. C., HABS' 50th anniversary was celebrated by a week-long schedule of receptions, book parties, and exhibits. And it was in 1983 that we began to make substantial progress toward eliminating our large backlog. Coordinated by Ellen Minnich, documentation on approximately 3,000 historic structures was transmitted to the Library of Congress by HABS/HAER staff in that year.

It was also in 1983 that we revitalized the HABS measured drawing summer team program. This was done by Ken Anderson, working in conjunction with NPS regional architects and others. Over the next five years, Ken would develop and manage no less than sixty-seven HABS summer projects. For this, Ken was appointed Chief of HABS, only the third individual to be so designated.

The HAER measured drawing summer team program was revitalized in 1985 by Eric DeLony. The success of this is so great that, in 1989, HAER may surpass HABS in the number of projects undertaken. For his contributions, Eric was named Chief of HAER, the second individual to be so named.

In more recent years, HABS/HAER has developed a new generation of HABS/HAER project leaders. Principal Architect John Burns developed HABS/HAER projects that expanded our knowledge of early building technology. Architect Paul Dolinsky is best known for his work in documenting historic landscapes, but has also directed numerous teams that have developed excellent documentation, such as his work in Richmond, Virginia. Architect Richard Anderson literally wrote the book on maritime recording in 1988 and may do likewise for railway recording in 1989. Historian/engineer Gray Fitzsimons, with the assistance of HABS Senior Historian Kim Hoagland, has developed an exciting multi-year program for documenting the industry of western Pennsylvania, along with its attendant company towns and settlements.

Numerous other people contributed to the revitalization of HABS/HAER and, although space precludes their mention, photographers Jack Boucher and Jet Lowe should be included for their adherence to HABS/HAER's goal of excellence in documentation.

Not everything that happened during the last eight years was positive. For example, despite numerous attempts, we were never successful in reestablishing the HABS or HAER advisory committees.

As I write this, the Presidential election is one month away. We in HABS/HAER look forward to the new Administration that will begin in January.

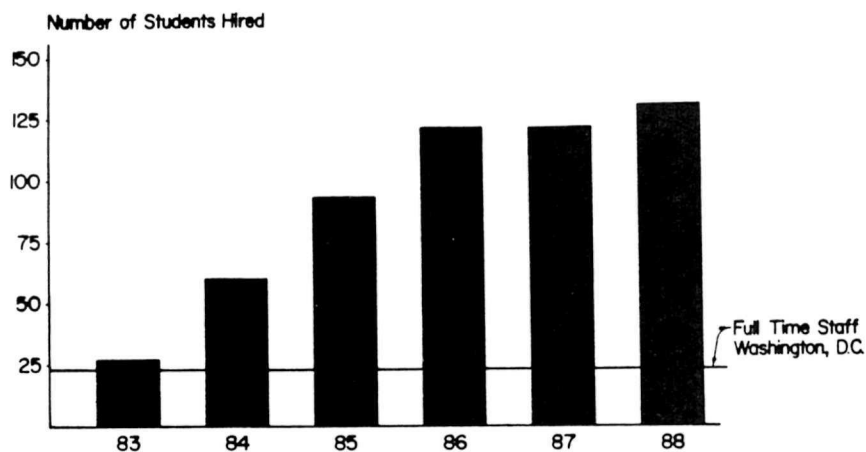
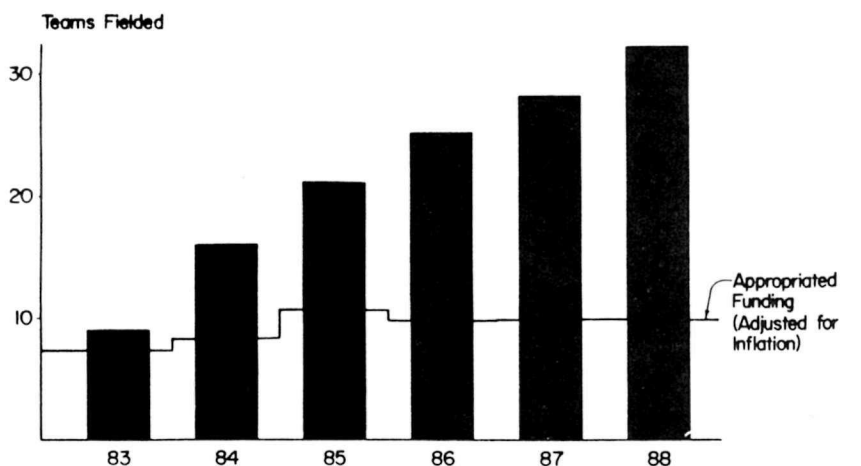
HABS/HAER TRANSMITTAL STATISTICS (including Fiscal Year 1988)

HABS/HAER Transmittal Statistics¹

Fiscal Year	79	80	81	82	83	84	85	86	87	88
Structures	606	1009	323	134	2928	2419	1919	1471	1073	960
Drawings	1086	1529	599	305	5124	2853	2073	739	338	1316
Photographs	3777	7596	2107	1981	17779	15793	10930	7829	6485	7642
Data Pages	3047	6173	1625	1674	7404	8083	5654	8412	4189	2981

¹ Represents a 10-year period included for reason of comparison. Not included in these statistics are the number of field notebooks, field photographs, stereopairs, and similar materials produced and transmitted to the permanent HABS/HAER collections maintained in the Prints and Photographs Division, Library of Congress. A listing of documented structures transmitted to the Library of Congress by HABS/HAER during Fiscal Year 1988 is included as an appendix to this report.

HABS/HAER PROJECTS: 1983-1988



FUNDING

In Fiscal Year 1988, the HABS/HAER Division received \$933,318 in appropriated funds. An additional \$105,000 in appropriations was received as an "add on" for the development of maritime documentation standards and recording. \$982,939 was received in donations and reimburseable accounts, almost entirely to support specific HABS/HAER projects. Thus, the total FY 1988 HABS/HAER budget (direct costs only) was \$2,021,257, a 25% increase over FY 1987 funding levels. This amount does not include monies in the HABS and HAER general donations accounts or in the Charles E. Peterson Prize fund, administered by The Athenaeum of Philadelphia. Funding projections for fiscal year 1989 indicate another increase for HABS/HAER.

HABS/HAER IN LEGISLATION

Fiscal Year 1988 was the first year that specific HABS/HAER projects were required by Federal legislation. The appropriations bill for the National Park Service for fiscal year 1989 (beginning October 1, 1988) specified that three HABS/HAER projects be undertaken.

- o Steel mill documentation in Pittsburgh and Allegheny County, Pennsylvania (\$150,000 for HAER, introduced by Congressman John Murtha (D-Pa.) and supported by Senator John Heinz (R-Pa.). HAER historian/engineer **Gray Fitzsimons** is project leader.
- o Inventory and documentation of historic industrial sites in the nine-county area in western Pennsylvania, comprising America's Industrial Heritage Project (\$315,000 for HAER, introduced by Congressman John Murtha). **Gray Fitzsimons** and HABS senior historian **Kim Hoagland** are the project leaders.
- o Photodocumentation and exhibit of historic architecture of Bucks County, Pennsylvania (\$10,000 within existing funds, introduced by Congressman Peter Kostmayer (D-Pa.). HABS/HAER historian **Catherine Lavoie** is project leader.

The total of these specific legislatively-mandated projects increases the HABS/HAER appropriated budget by approximately 50% over fiscal year 1988 levels. To meet these Congressional mandates, HABS/HAER currently plans to open field offices in Johnstown and Pittsburgh, Pennsylvania, the first such field offices established by HABS/HAER.

AWARDS AND HONORS

Staff Promotions

R. Marlene Bergstrom, to HABS/HAER Field Program Administrator. In July of 1976, Marlene joined the HABS staff as a clerical assistant, responsible for the preparation of historical manuscripts. Marlene was then promoted to Photographic Services Assistant, handling the scheduling of photographic documentation, accessioning and identifying photographs, ordering reproductions of the photographs, and preparing the photographs for transmittal to the Library of Congress. This year, Marlene was promoted to the position of Field Program Administrator, responsible for the administration of HABS and HAER summer field teams.



John A. Burns, A.I.A., to HABS/HAER Principal Architect. John joined the HABS staff in November 1972, as an architect responsible for the production, editing and processing of measured drawings of historic buildings for the HABS collection at the Library of Congress. His specialty is building technology. John has also written several articles and reports, and is currently the editor of Recording Historic Structures, the sequel to Recording Historic Buildings, the HABS/HAER bible. In addition to publishing, John has successfully maintained the Charles E. Peterson Prize program, an award that is presented each year to a student or groups of students for measured drawings.



Paul D. Dolinsky, HABS Landscape Architect. Paul joined HABS during the summer of 1979, supervising one of the many recording projects that would bear his mark. He joined the HABS Washington staff in the fall of 1979, and has since initiated many diverse and successful recording projects. He also has been the liaison between HABS/HAER and the US/International Committee on Monuments and Sites to employ foreign students on HABS/HAER recording projects and, within the past two years, has initiated a program to document American landscapes. Both activities have proved fruitful. Paul received his B.A. in Landscape Architecture from Penn State University and a Masters Degree in Architecture from American University.



Awards and Honors, cont'd.

Staff Promotions, cont'd.



G. Gray Fitzsimons, HAER Historian/Engineer.

Gray first worked for HAER during the summer of 1979, conducting a statewide inventory of Montana historic bridges. As an engineer, he researched 19th century building technology, directed a historic bridge inventory for the University of Delaware, and prepared a historic building preservation guide of over 150 structures at Mount Rainier National Park in the State of Washington. In February 1986, Gray joined HAER as a permanent Historian/Engineer, continuing to successfully supervise numerous projects. Gray is currently the program manager of the largest project in the office,

the documentation of iron and steel sites. Gray received his B.S. degree in Civil Engineering from the University of Maryland, and is presently completing requirements for his Masters degree in American Social and Labor History from the University of Washington.



Catherine C. Lavoie, HABS/HAER Historian.

Catherine began her Government service during the summer of 1985, conducting primary research of selected late nineteenth and early twentieth century family officers quarters at Fort Riley, Kansas, for the Historic American Buildings Survey. In 1986, she came to HAER as historian, responsible for transmitting to the Library of Congress documentation generated by the Fort Riley, Fort Leavenworth and DARCOM recording projects. Her primary role has been project manager for statewide photodocumentation projects. Catherine received her Bachelor of Science degree in American History from her Masters of Arts degree in American Studies from

Frostburg State College and the University of Maryland.



Sally K. Tompkins, Deputy Chief. In 1978, Sally joined the HABS staff as an Architectural Historian, serving as Division liaison with high ranking Department of the Army personnel and representatives from other Federal agencies in relation to the identification, evaluation, and inventory-level recording of significant historic structures on military installations. She successfully managed and completed many inventory projects, including the HABS/HAER-DARCOM program, the largest single preservation planning project ever conducted by HABS/HAER. This year, Sally was promoted to the position of Deputy Chief of the HABS/HAER Division.

Sally received her Bachelors of Arts degree in Art History from Skidmore College and her Masters of Arts degree in Historic Preservation from George Washington University.

Awards and Honors, cont'd.

Staff Promotions, cont'd.

Robyn M. Elliott, HABS/HAER Clerk-Typist. Robyn began her service with HABS/HAER on August 30, 1987. She performed her tasks outstandingly and greatly assisted the Division Secretary in performing administrative tasks that ensured the smooth operation of the office.

Frederick C. Engle, to Computer Assistant. On May 10, 1987, Fred came on board as a social science technician, responsible for providing daily input into the HABS/HAER data base of all record updates, additions, and transmittals. Fred received his A.S. in Marine Technology from Florida Institute of Technology in 1981, his B.A. and M.A. in Geography from State University of New York, Albany, in 1984 and 1986, respectively.

Other Honors

Catherine C. Lavoie completed her Master's degree this summer. Her M.A., from the University of Maryland, is in American Studies. Her concentration was in Material Culture, with emphasis on Historic Preservation and American Architecture.

Blair Reeves, FAIA, Receives National Trust's Crowninshield Award

On May 9, 1988, longtime HABS supporter F. Blair Reeves, FAIA, received the National Trust for Historic Preservation's Louise duPont Crowninshield Award, the highest award presented by that organization. Mr. Reeves began as a HABS supervisor in Harpers Ferry in 1958. For the next 30 years, he continued his involvement with HABS, as a field supervisor (1958-1971), as founder and director of Preservation Institute of Nantucket (1972-1988), and as architectural professor at the University of Florida. Several generations of students have learned about HABS measured drawings from him.

Mr. Reeves was presented with the Crowninshield Award at the Decatur House in Washington, D. C. by J. Jackson Walter, President of the National Trust. Earlier, he and his wife, Mary Nell, were the invited guests of current and former HABS staff members at a luncheon in their honor at the Henley Park Hotel.

Mr. Reeves joins several other former HABS members as recipients of the Crowninshield Award, including Charles E. Peterson (1965), Ernest Allen Connally and William J. Murtagh (1980). The HABS program was awarded the Crowninshield Award in 1983 and donated the cash award to the Charles E. Peterson Prize fund.

CHARLES E. PETERSON PRIZE

The Historic American Buildings Survey and the Athenaeum of Philadelphia awarded the 1988 Charles E. Peterson Prize at the fall meeting of the American Institute of Architects' Committee on Historic Resources in Cincinnati, Ohio.

Nineteen eighty-eight was a record year for the Peterson Prize competition. There were a total of thirty entries from thirteen schools. Seven of the structures

Awards and Honors, cont'd.

Charles E. Peterson Prize, cont'd.

recorded have National Historic Landmark status and an additional fourteen are listed in the National Register of Historic Places. The 137 students who participated produced 363 measured drawings for inclusion in the HABS collection. The State of Louisiana was the most active supporter of the program in 1988. The Office of Cultural Development, Division of Historic Preservation, sponsored a total of sixteen entries from Tulane University, Louisiana State University, and the University of Southwestern Louisiana.

This is the sixth year the Charles E. Peterson Prize has been offered. To date, over 380 students from 31 colleges and universities have participated by completing one hundred entries. They have produced 1,011 measured drawings for inclusion in the HABS collection. The cash awards are endowed by a privately-held fund managed by The Athenaeum of Philadelphia.

First Place in 1988 and a \$750 award was won by Todd Skenderian from the School of Architecture and Environmental Design at Arizona State University. He produced drawings of the Oaklawn Avenue Waiting Station in South Pasadena, California. The station was designed by Charles and Henry Greene and built in 1906. It is constructed as an open shelter, using brick, rounded boulders, and redwood, and has a tile roof. It originally served passengers on the Pacific Electric Line. Mr. Skenderian's faculty sponsor was Professor Barbara Kolby.

The \$500 award for second place was won by six students from the University of Illinois at Urbana-Champaign, Robert Gilvesay, Timothy M. Gregg, Priscilla J. Holt, Mark W. Igelski, Joseph P. Matyi, Jonathan C. Spodek, and Barry R. Swedeen, sponsored by Professor John S. Garner. They produced measured drawings of the Patrick Fitzpatrick House and Barn, Lockport, Illinois. The original house was most likely completed before 1850 and the wing and porches before 1862. Constructed of locally quarried limestone, only two generations of the Fitzpatrick family occupied the house before it was donated to the State of Illinois in 1983.

The \$250 award for third place was given to a team of eighteen students from Auburn University, Deborah Adkins, T. Paul Bates, Nancy Burke, Judith E. Collins, Darla S. Davis, David Harris, Karen Hundt, Lee Ann Jackson, Katherine Lynn, Elaine G. Pierce, Mark E. Pierson, Julie Ann Smith, Phillip B. Smith, Michael R. South, Gail M. Tubbs, Sidney P. Ward, Mae B. Washington, and David Mingtze Wu. Sponsored by Professors William Briggs and Kimberly Harden, they produced a set of drawings of the Hightower Building in Lafayette, Alabama. Located with its elaborate facade facing Courthouse Square, the two-story commercial building was completed ca. 1885. After a recent rehabilitation, it continues in use as offices.

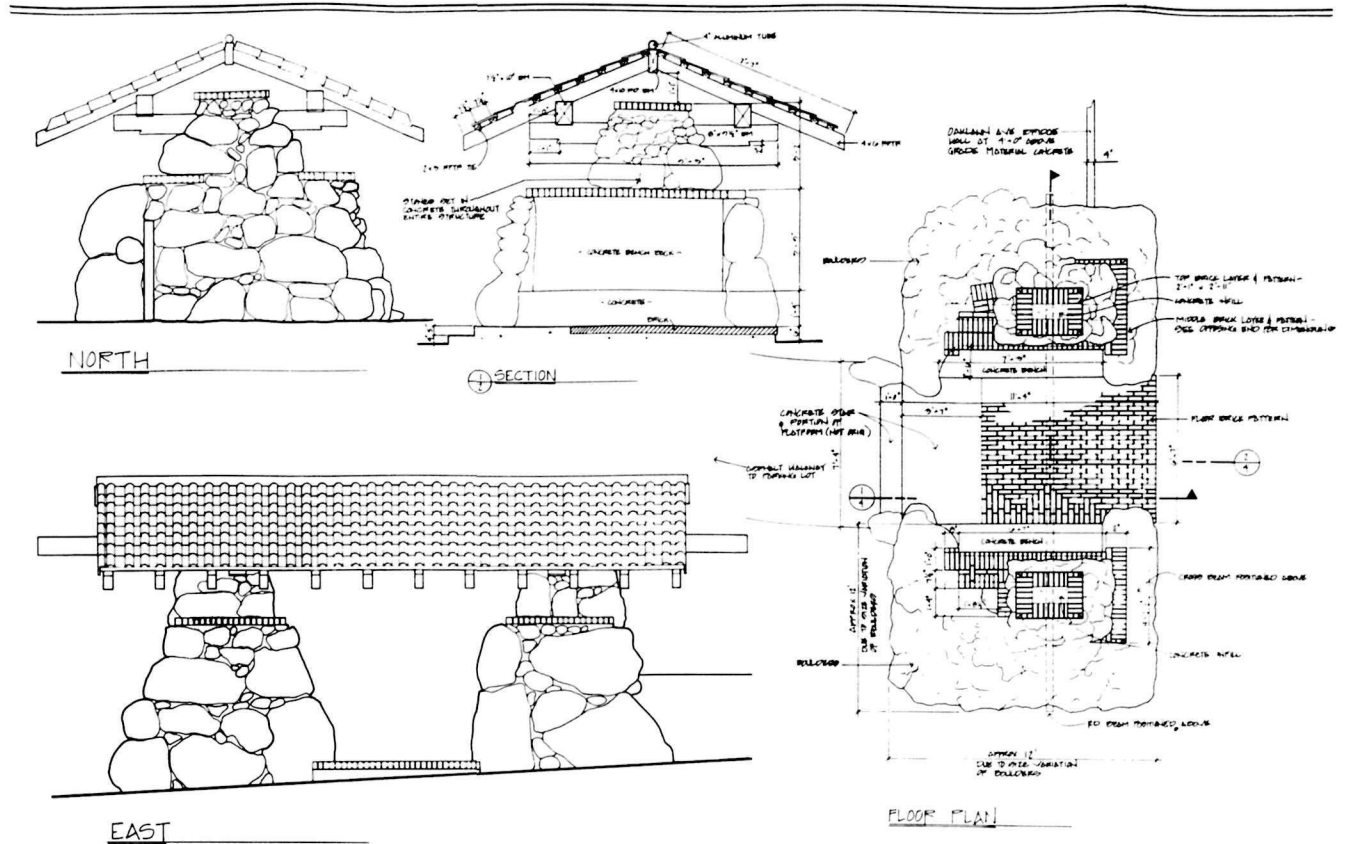
The 1988 jurors included Bruce Laverty from The Athenaeum of Philadelphia, Ellen P. Harris, AIA, from the AIA's Committee on Historic Resources, and Kenneth L. Anderson, Jr., AIA, from the Historic American Buildings Survey.

Ten additional entries were awarded Honorable Mention in the 1988 Peterson Prize competition. See Appendix II for listing.

Awards and Honors, cont'd.

Charles E. Peterson Prize, cont'd.

HABS/HAER transferred to the Athenaeum \$10,000 to increase the Charles E. Peterson Prize fund. The fund now stands at \$35,000. Interest from this fund provides the cash awards for the prize.



Floor plan, sections and elevations of the Oaklawn Avenue Waiting Station in South Pasadena, California. Delineated by Todd Skenderian, Arizona State University. One in a set of drawings by Mr. Skenderian that won first prize in the 1988 Charles E. Peterson Prize competition and that will be used on the HABS/HAER 1988 Summer Jobs Poster.

ACTIVITIES



HABS/HAER Deputy Chief Sally Tompkins met with officials of US/ICOMOS to express appreciation for their assistance in making 1988 a banner year in recording. L-R. Ellen Delage, Sally Tompkins, Terrie Morton, and Russell Keune.
Photographer: Joseph Balachowski

U.S./International Council on Monuments and Sites (US/ICOMOS)

The HABS/HAER intern and documentation program with US/ICOMOS has proved extremely successful. This past summer, sixteen ICOMOS interns from seven countries added their expertise to HABS and HAER teams. Four interns from the United Kingdom, four from Ireland, three from Canada, two from France, and one each from Germany, Finland and Austria actively participated as members of field teams at recording sites from San Juan, Puerto Rico, to Santa Cruz, California.

These talented young professionals made major contributions to this summer's documentation, while taking part in a large segment of life in the United States, in most cases, at considerable distances from the usual tourists stops. The experience made for a summer rich in opportunities for both professional and personal growth. The growing popularity of the program seems to indicate that the interns and their sponsoring countries find these opportunities attractive ones.

Next year, it is expected that the latter program will bring to HABS/HAER students from the U. S. S. R. and other countries.

ICOMOS interns worked on the following projects: Sleeping Bear Dunes National Lakeshore, Texas State Capitol, Antietam National Battlefield, San Juan National Historic Site, Arkansas Historic Bridges, Women's Rights National Historic Park, Wilder Ranch, America's Industrial Heritage Project at Cambria Iron Works, Johnstown, and Mt. Etna Furnace, Chesapeake and Ohio Railroad at New River Gorge National River, and the Delaware Aqueduct.

Activities, cont'd.

National Conference of State Historic Preservation Officers

In April, at the National Conference of State Historic Preservation Officers (NCSHPO) meeting in Washington, D. C., HABS/HAER hosted a breakfast for the attendees, at which examples of HABS/HAER 1987 documentation were on display. The purpose of the breakfast was to promote greater visibility of the HABS/HAER program and to assist State Historic Preservation Office (SHPO) staff who are involved in formulating Memorandums of Agreement with Federal agencies calling for HABS/HAER documentation as a form of mitigation. HABS/HAER hopes to make the breakfast an annual event at all NCSHPO meetings held in Washington, D. C.

In addition, HABS/HAER and the NCSHPO will jointly sponsor an internship for a SHPO staff member to work on a summer recording team. Interested staff members are requested to submit applications in the spring. Sally Tompkins is HABS/HAER project leader.

HABS at Auburn University - Walter E. Burkhardt Prize

On May 8, 1987, Nicholas Holmes, Jr., FAIA; Larry Oaks, Executive Director, Alabama Historical Commission; Robert Gamble, Alabama Historical Commission, and **Robert Kapsch** met with the faculty of the School of Architecture at Auburn University to explore reasons why so few Auburn architectural students applied for HABS summer employment or became involved in historic architecture. This meeting led to a number of activities presently being supported by the new leadership, Dean Ray Parker, and department head Daniel Bennett. First, former HABS summer supervisor Kim Harden and Bill Briggs were hired to teach a HABS measured drawing course, one of several dozen courses offered across the country. Their students entered the Charles E. Peterson Prize competition and were awarded third place in the most competitive Peterson Prize competition since its establishment in 1983. Five of the students were hired by HABS during the summer of 1988, one of the highest numbers from any architectural school. Several other students worked with the Alabama Historical Commission to document to HABS standards the Seibel House in Montgomery.

Through the efforts of Nicholas Holmes, Jr., Nicholas Holmes, III, and Kim Harden, Ms. Marilyn Davis Thomas was contacted, and subsequently helped organize the Walter E. Burkhardt Prize for the best set of measured drawings meeting HABS standards. Ms. Thomas is the wife of the grandson of Walter Burkhardt and a graduate of the School of Architecture at Auburn. The prize will honor Walter E. Burkhardt's significant contributions to HABS in Alabama, dating from the time when he was the HABS Alabama District Officer. The first Burkhardt Prize will be presented in the autumn of 1988 and will be accompanied by an exhibit of HABS drawings produced by Auburn students and a reception. This experience at Auburn demonstrates how to involve architectural students in assisting the needs of the historic preservation community.

Activities, cont'd.

U.S.-Canada Cooperative Agreement on Architectural/Engineering Recording

On October 8-10, 1987, in Toronto, **Robert J. Kapsch** participated in a symposium on architectural and engineering documentation sponsored by Parks Canada and organized by Mr. Robin Lettelier of Parks Canada.

The presentation on HABS/HAER operations and use was turned into an article, "HABS/HAER: A User's Guide," at the request of Ms. Marylee MacDonald, APT Editor, University of Illinois, and will be published in the spring of 1989 in the APT Bulletin. Copies are available from the HABS/HAER office.

While in Toronto, Mr. Kapsch and Mr. Lettelier discussed the development of a cooperative program between the architectural and engineering documentation program of Parks Canada and the architectural and engineering programs of the National Park Service. This cooperative program has been approved in principle by Dr. Christina Cameron, Director General, Historic Sites Branch, Parks Canada, and by Mr. Jerry L. Rogers, Associate Director for Cultural Resources, National Park Service. The program would entail the routine exchange of technical information between Canada and the United States, the exchange of technical staff, and similar programs. Both Mr. Lettelier and Mr. Kapsch, through their respective international liaison offices, have included this cooperative agreement on the agendas of their respective directors for discussion when they meet to discuss U.S.-Canada cooperation. The first HABS/HAER visits to Parks Canada are tentatively set for the spring of 1989, in conjunction with the annual meetings of the Society of Industrial Archeology and the Society of Architectural History. It is expected that this cooperative agreement will provide a model for other cooperative agreements with other countries having architectural and engineering documentation programs.

Society of Architectural Historians

The first round of the Buildings of the United States series, sponsored by the Society of Architectural Historians (SAH) and to be published by Oxford University Press, is due in 1989. The volumes will include Washington, D. C. Rhode Island, and Iowa. A second round of volumes was approved by the Editorial Board at its September meeting. These volumes, slated for publication in 1990-1991, will be on Alaska, West Virginia, Virginia [two volumes], and Michigan.

HABS/HAER is assisting the authors in the use of its collection. An agreement with the SAH will bring all large format negatives into the HABS/HAER collection at the completion of the project. **Sally K. Tompkins** represents HABS/HAER on the Editorial Board. **Kim Hoagland** has been selected to author the volume on Alaska.

Activities, cont'd.

Fellowships

HABS/HAER is in the process of developing a series of fellowships in conjunction with professional organizations. Two separate cooperative agreements will allow competitively selected fellows to work with HABS/HAER during the nine months between summer recording seasons. Agreements that would set up these fellowships are being processed or are being negotiated with the Society of Architectural Historians (SAH) and the Society for Industrial Archeology (SIA).

The SAH/HABS Fellow will be selected from historians who work for HABS/HAER during the summer. The Fellow, working in the HABS office, will research and write historical documentation that will add to the HABS collection, as well as constitute a publishable work in itself. An advisory committee established by the SAH will select the Fellow and advise on the general direction of the program. The fellowship is directed at architectural historians who want more practical experience before entering graduate school, or who wish to take a break from graduate studies. The program will begin next fall, with selection of the Fellow scheduled for mid-summer. **Kim Hoagland** will serve as director of the program.

The SIA/HAER Fellowship will enable one or more graduate students, faculty or practicing architects, engineers or historians to work with or contribute to the HAER collection. For example, the Fellow could complete work on existing projects, could propose a project that would add documentation to the HAER collection, or could propose a project that would synthesize documentation already in the collection.

From the Fellow's perspective, the SIA/HAER Fellowship provides an opportunity for research in industrial archeology without committing to a permanent situation or location, and to avail themselves of the resources Washington has to offer. From SIA's perspective, it will have a forum to encourage scholarship in industrial archeology, will increase its voice with academia, will generate a source of quality manuscripts for publication in IA. The Journal of the Society of Industrial Archeology, and will enrich a partnership that the two organizations have enjoyed over the past seventeen years. **Eric DeLony** is head of the program.

Statewide Photodocumentation Projects

Work continued this year on statewide photodocumentation projects, a program initiated in 1987. This year, sites in Minnesota and Massachusetts were photodocumented by HABS/HAER.

In Minnesota, the recording of twenty-one National Historic Landmarks (NHLs) and four additional sites was undertaken by HAER photographer **Jet Lowe**, with field assistance by the Minnesota Historical Society and staff assistance in Washington by **Catherine Lavoie**. Emphasis was also placed on the recording of Minnesota's historical resources in its extensive iron industry, including The Soudan and Mountain Iron Mines and the Hull-Rust-Mahoning Open Pit Iron Mine of the rich Mesabi Range (both NHLs), as well as a taconite plant and an iron ore loading dock.

Activities, cont'd.

Massachusetts Photodocumentation Project

Working with the Massachusetts Historical Commission, headed by Ms. Valerie Talmage, HABS photographer **Jack E. Boucher** was able to document 36 sites throughout the State. Jim Bradley, Director of the Preservation Planning Division, oversaw the project, with assistance from Leslie Sampou, Paul Holtz, and other staff members. **Catherine Lavoie** provided support from Washington. In Massachusetts, their philosophy that "preservation is for people" was evident in the selection of largely public and/or community spaces. Thus, familiar sites such as Faneuil Hall, Quincy Market, The Old State House, and Trinity Church were documented, as well as lesser known community landmarks such as the town halls of Essex, East Hampton and Wellesley, and the meeting houses of Pembroke and Lancaster.

As an adjunct to this project, HABS/HAER contracted with photographer Martin Stupich to document a select group of industrial and engineering sites throughout the State. Included in the thirteen sites photographed by Mr. Stupich were the Florida Avenue Bridge, the Cape Cod Canal Lift Bridge, the Mosley Truss Bridge, and the Boston Public Garden Suspension Bridge. The resulting photographs made an outstanding addition to the HAER collection.

Next in line for a photodocumentation project are Prince Georges County, Maryland, and Bucks County, Pennsylvania.

Congressman Kostmayer Honored by Friends of HABS

HABS founder Charles E. Peterson and the Friends of HABS in Philadelphia held a luncheon in honor of U. S. Representative Peter H. Kostmayer (D-Pa.) of Bucks County, Pennsylvania, at the Down Towner Club on September 20. Congressman Kostmayer became the first member of Congress to sponsor a HABS project, when he introduced legislation calling for photodocumentation of the most important structures in Bucks County. **Sally K. Tompkins, John A. Burns, and Jack E. Boucher** represented HABS/HAER at the luncheon. Ms. Tompkins presented Congressman Kostmayer with two Boucher photographs of the Moon Williamson House, a log structure in Bucks County. Earlier, **John Burns** joined the Congressman at a press conference on the steps of the Bucks County Courthouse in Doylestown, to announce the project.

Eastern Office of Design and Construction Division Photographic Collection

Randy Biallas, Acting Chief, Historic Architecture Division, and **Robert Kapsch**, Chief, HABS/HAER, have agreed, in principle, to accession into the HABS collection that portion of the Eastern Office of Design and Construction Division (EODC) photographs that meet HABS standards. The EODC photographic collection was developed beginning in the 1930s through 1966, when EODC was abolished and its responsibilities transferred to the Denver Service Center. The photographs were transferred from Philadelphia to Washington, D. C. They consist primarily, but not entirely, of National Park Service historic architecture, with approximately half meeting HABS standards. They have never been publicly accessioned. This project represents the largest single

Activities, cont'd.

photodocumentation acquisition undertaken by HABS. The previous largest photodocumentation acquisition was the Charles van Ravenswaay-Piaget collection, consisting of 1,800 large format photographs, accessioned into the HABS collection during 1985-1986. After accessioning, the complete EODC photographic collection will be transferred to the National Park Service Photo Archives in Springfield, Virginia. Although the work is expected to be undertaken by contract, **Kim Hoagland** will serve as project leader, as she did for the Piaget-van Ravenswaay collection.

EXHIBITS

A photographic exhibit at the Boston Athenaeum, entitled "A Commonwealth to Keep," featured the photographic works of **Jack E. Boucher**, with inclusions from Martin Stupich, a HAER contract photographer, and Elana DeLaville from the State of Massachusetts.

Thirty-eight views of 36 historic sites were exhibited, the emphasis being on the "common wealth" of historical and architectural heritage of the State of Massachusetts. The exhibit also included an informative display explaining the work of the Historic American Buildings Survey, the Historic American Engineering Record, and the Massachusetts Historical Commission. On exhibit were early works from the HABS/HAER collections, both photographs and drawings, and a photograph of the illustrious **Jack E. Boucher**, HABS photographer for over twenty-seven years, at work behind his view camera. The exhibit has gained the sponsorship of the Bank of Boston, who will display it at its branch offices throughout the State.

National Building Museum Cosponsors Exhibit of HABS/HAER 1988 Documentation

Sally Tompkins and Robert Duemling, Director and President of the National Building Museum, have formulated a cooperative agreement whereby examples of documentation completed by HABS/HAER during the 1988 recording season will be the subject of an exhibit at the National Building Museum in the late fall. While the agreement is limited to pledging the two organizations to cooperate in producing a single exhibit, it is anticipated that future agreements will establish a series of exhibits based on the HABS/HAER collection and focusing on such topics as engineering structures, vernacular architecture, neo-classicism, etc. David Chase, Curator of the Building Museum, will work with HABS/HAER to put together the exhibit.

Plans for the two organizations to work together were initiated at a November 1987 luncheon and tour of the collection at the Library of Congress, hosted by **Robert Kapsch**, in honor of Mr. Duemling who had recently been named director and president of the National Building Museum. That initiative culminated with the signing of the cooperative agreement in September 1988.

Activities, cont'd.

Massey to Work on Definitive HABS/HAER Bibliography

In 1988, HABS/HAER awarded a contract to former HABS Chief James Massey to develop a definitive bibliography of publications produced by and/or related to HABS/HAER from 1933 to the present. This will be the first definitive listing of HABS/HAER publications. Plans are to publish the resulting manuscript later this year. Readers aware of HABS/HAER publications that may otherwise be missed may write to James Massey, P. O. Box 263, Strasburg, Virginia 22657. Mr. Massey will be assisted in this work by Shirley Maxwell and former HABS staffer Nancy Beinke Schwartz.

Frederick Gutheim Honored

On March 3, 1988, a festschrift and 80th birthday celebration was held in the Gelman Library, George Washington University, to honor educator/preservationist/author/architectural critic **Frederick Gutheim**. The affair was organized by former Gutheim students **Robert J. Kapsch** and **Sally Kress Tompkins** and was attended by approximately 80 colleagues and friends.

Other Exhibits

- November 13, 1987 - Reception and Exhibit. "Bread and Steel." (An exhibit of photographs by Jet Lowe).
Buffalo and Erie County Historical Society, Buffalo, New York
- December 10, 1987 - HABS/HAER Holiday Open House and Exhibit of Current Work, Washington, D. C.
- January 5, 1988 - Reception and HAER Exhibit of Photographs and Drawings of the Moravian Pottery and Tile Works
Moravian Pottery and Tile Works, Doylestown, Pennsylvania
- March 23, 1988 - HABS/HAER Breakfast and Exhibit of Current Work
National Conference of State Historic Preservation Officers
Hotel Washington, Washington, D. C.
- June 30, 1988 - Reception and Exhibit of Jack Boucher Photographs,
Book Party for A Record in Detail
National Building Museum, Washington, D. C.
- August 25, 1988 - Exhibit of the BALCLUTHA Drawings
National Maritime Museum, San Francisco, California

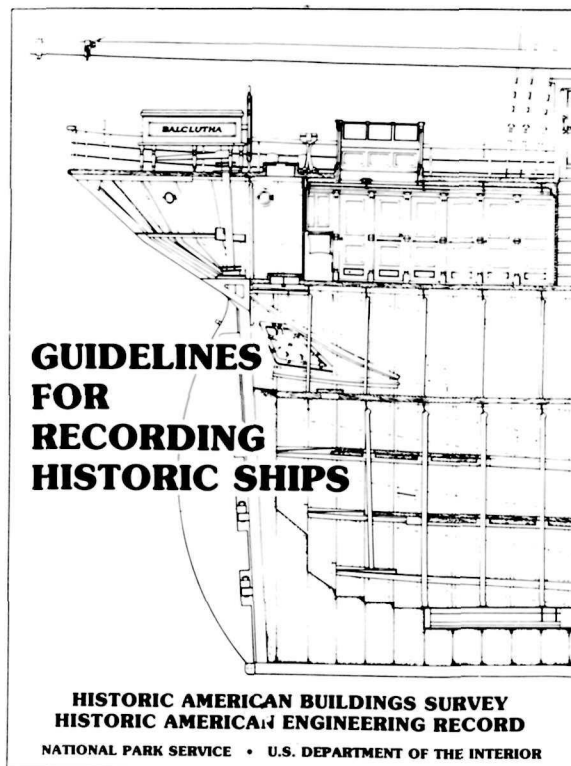
Other Social Functions

- August 6, 1988 - Annual HABS/HAER Picnics
Shangri-La, Shepherdstown, West Virginia, and
Wilder Ranch, California
- August 23, 1988 - Going-Away Party for Kenneth L. Anderson, Chief of
HABS
American Institute of Architects Headquarters
Washington, D. C.

HABS/HAER IN PRINT

Books:

- o "A Record in Detail: The Architectural Photographs by Jack E. Boucher, University of Missouri Press, 1988, \$34.95. Published by the University of Missouri Press, this illustrious collection of photographs by **Jack E. Boucher**, HABS photographer, captures the beauty of America's architectural heritage. The historical and architectural significance of the selection of sites was interpreted in captions by HAER Architectural Historian **William W. Lebovich**. Preface by **Robert Kapsch**. "The Art of Architectural Photography" explained by **William H. Pierson, Jr.**
- o Guidelines for Recording Historic Ships, the result of a four-year documentation effort, was completed this summer and is being printed for distribution in late fall. The Guidelines, authored by **Richard K. Anderson**, HAER architect, is the result of his work on the recording of the schooners, WAWONA and ALABAMA; the Chesapeake bugeye, LOUISE TRAVERS; the square rigger BALCLUTHA; from the National Maritime Museum's fleet in San Francisco; and the steamship TICONDEROGA at Shelburne Museum in Vermont.



Draft copies of the Guidelines were distributed to members of the maritime community for comment by the Maritime Department of the National Trust for Historic Preservation. The Trust, through the interest of Marcia Myers and Lynn Hickerson, gave both financial support and logistical assistance to its preparation. The publication fills a long-standing need in the maritime community.

Copies of the Guidelines can be obtained by writing to HABS/HAER, National Park Service, P. O. Box 37127, Washington, D. C. 20013-7127.

Cover of Guidelines showing inboard profile of ship BALCLUTHA. Delineated by Robbyn L. Jackson and Deborah J. Cooper, 1987.

HABS/HAER In Print, cont'd.

- o Recording Historic Structures, the replacement book for Harley J. McKee's Recording Historic Buildings, should be out in 1989, in time for use on next summer's HABS and HAER projects. The completed manuscript was turned over to the AIA Press this past summer and is in production. The text includes contributions from **Sally Tompkins, Kim Hoagland, Gray Fitzsimons, William Lebovich, John Burns, Richard Anderson and Paul Dolinsky**, with a preface by **Robert Kapsch** and foreword by **Charles E. Peterson**. Illustrations were compiled by **Catherine Lavoie, Ellen Minnich, and Jean Yearby**. **John Burns** was editor-in-chief.
- o The new, eighth edition of Architectural Graphic Standards, published in 1988, is the first edition to include a section on historic preservation. Four of the pages are devoted exclusively to HABS. The HABS drawings are the only ones in the entire book that were not redrawn for publication, a first for Standards. **John A. Burns** developed the HABS pages from HABS measured drawings.

Periodicals:

- o "Jet Lowe: Industrial Eye," by David A. Silverman, Technical Photography, March 1988, pg. 38. A feature on Industrial Eye: Photographs by Jet Lowe from the Historic American Engineering Record, a book of photographs taken by Jet Lowe and published by the National Trust for Historic Preservation in 1987.
- o "An Eye for Detail," Americana, August 1988, pg. 19. Profiles A Record in Detail: The Architectural Photographs of Jack E. Boucher.
- o "An Engineering Perspective of the Past," by Kathleen A. McCarthy, Assistant Editor, Engineering Education, 1988. A reprint from the American Society of Engineering Education with an overview of the HAER program and its activities since its inception in 1969.
- o "Preserved on Paper: The Historic American Engineering Record Documents BALCLUTHA," Sea Letter, San Francisco: The National Maritime Museum Association, Fall 1987, Number 38, pg. 22. A look at the HAER project that documents the historic steel-hulled, square rigger, moored in San Francisco and owned by the National Park Service.
- o "HABS In Connecticut," by S. Allen Chambers, Jr., Connecticut Preservation News, Special Supplement, Vol. XI, No. 4, July 1988. Details the HABS program and its documentation work in the State of Connecticut.

Newspapers articles:

- o "Students measure, draw, photograph old Judsonia Bridge," by Don Bowen, staff writer, The Daily Citizen, White County, Arkansas, June 29, 1988. An overview of the HAER documenting historic bridges throughout the State of Arkansas.

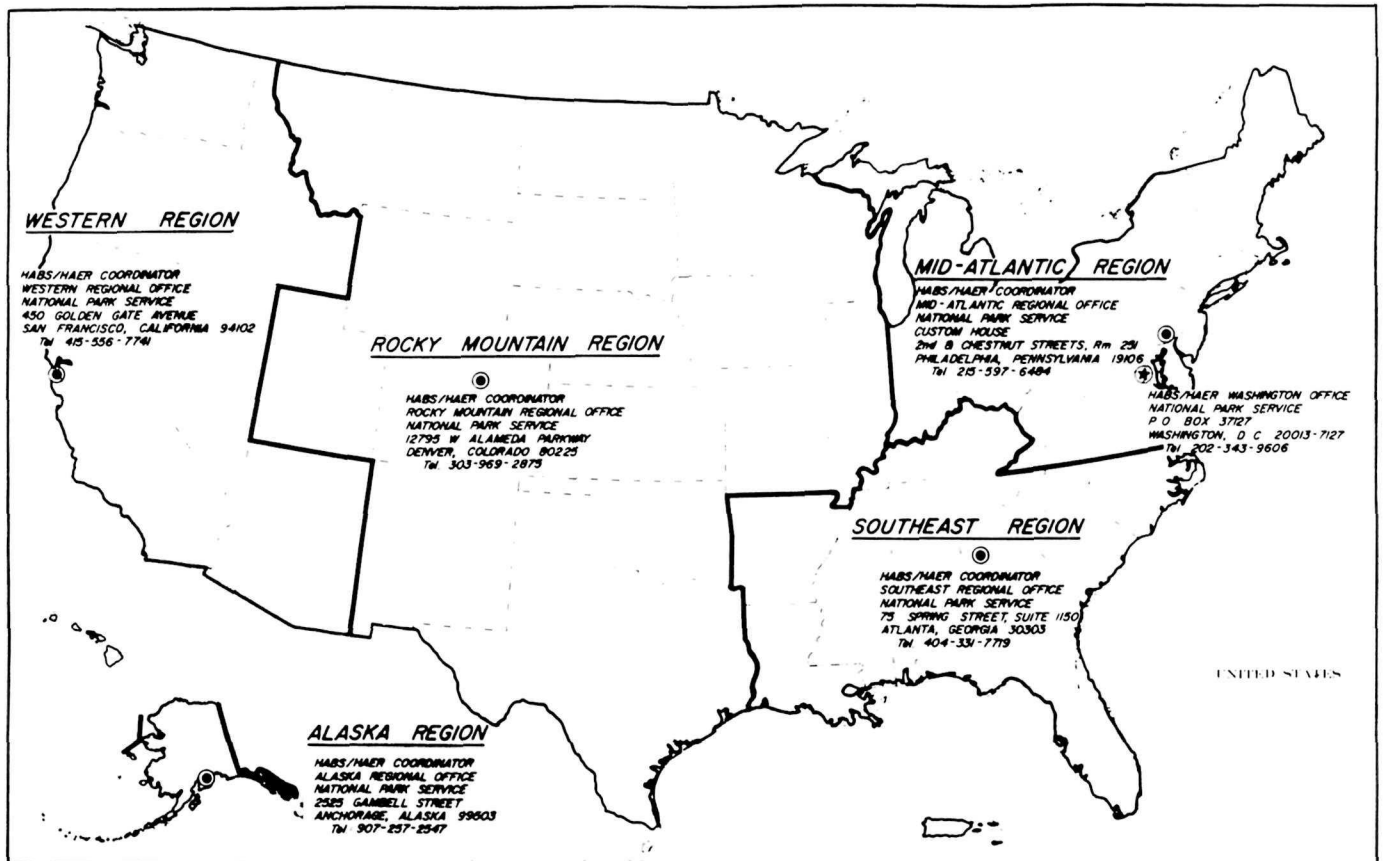
HABS/HAER In Print, cont'd.

- o "Parapets, porticoes and swags. Executive Mansion plans aim for 1830 look," by Katherine Calos, The Richmond News Leader, Richmond, Virginia, February 22, 1988. An article outlining the history of the Executive Mansion in Richmond and the conceptualization for its documentation by the Historic American Buildings Survey in 1987.
- o "A Capitol Measure," by P. Kevin Morley, The Richmond News Leader, Richmond, Virginia, August 2, 1988. Photograph showing Nancy L. Harrington, an architecture student from the University of Virginia, reaching out from the bucket of a Richmond Fire Bureau truck to inspect the pediment of the roof of the Virginia State Capitol's south portico before measuring it. The HABS team will produce the first comprehensive, accurate drawings of the building, which will celebrate its 200th anniversary in October 1988.
- o "Group makes record of historical landmarks," by Lauren Shaham, The Tri-State Gazette, Port Jervis, New York, July 23, 1988. A profile of the HABS/HAER team that documented the Zane Grey House and the Roebling Bridge in the Upper Delaware Scenic and Recreation River in Narrowsburg, New York. It outlines the team's diverse backgrounds and interests, and how they have coexisted together during the project. Two Canadian students expressed their enjoyment in living and working alongside American students.
- o "Bethlehem. As Lackawanna's steelmaking era draws to a close, preservationists are rushing to document its history," by Anthony Bannon, Buffalo News Entertainment Magazine, May 10, 1985. A short history of the Bethlehem Steel Company's Lackawanna plant and how HAER, in cooperation with Bethlehem Steel and the Erie County Preservation Coalition, photographically documented the exteriors of the grain elevators, steel plants, and other industrial facilities.
- o "The Twilight of Buffalo's Industrial Landscape," by Richard Huntington, The Buffalo News Entertainment Magazine, June 22, 1986. Photographs and insight into the HAER project in which **Jet Lowe** photographed significant industrial structures in Buffalo, New York. Arranged by **William L. Lebovich**, in cooperation with the Buffalo and Erie County Historical Society and members of the Preservation Coalition of Erie County who set up his itinerary, Jet took on the monumental task of photographing not only inactive facilities throughout Buffalo, but also photographed current operations at American Brass and the USAir maintenance facility at the Buffalo airport. The photographs produced by Jet were displayed at the society's office, as part of its 125th anniversary celebration.
- o "Capitol Lines Captured in Ink," by Ann E. Henderson, Editor, PACER, Vol. 5, No. 5, October/November 1988, Richmond, Virginia: Department of General Services. Profiles the HABS team documenting the Virginia State Capitol.

MITIGATIVE DOCUMENTATION PROGRAM

Under the provisions of the amended National Historic Preservation Act, Federal agencies are required to produce documentation to HABS/HAER standards on buildings, structures, sites, and objects that are listed in or eligible for listing in the National Register of Historic Places and that are threatened with demolition or substantial alteration by projects with Federal involvement. The five National Park Service regional offices charged with external historic preservation responsibilities administer the HABS/HAER mitigative documentation program. The actual work is usually conducted by contractors and supervised by the responsible Federal agency. The documentation produced is reviewed by the Regional Coordinator and transmitted to the HABS/HAER Washington office for inclusion in the HABS/HAER collections at the Library of Congress. The Regional Coordinators are:

- * Alaska Region Kate Lidfors
- * Western Region Ann Huston
- * Rocky Mountain Region Gregory Kendrick
- * Mid-Atlantic Region Tina Van Dyke
- * Southeast Region Richard Ramsden



HABS / HAER 1988 SUMMER PROJECTS



HABS PROJECTS

ANTIETAM NATIONAL BATTLEFIELD SITE

Sharpsburg, Maryland

Project Leaders: Kenneth L. Anderson, A.I.A, Chief of HABS
 Paul D. Dolinsky, Architect

Cosponsor: National Capital Region, National Park Service

The Antietam National Battlefield project is in the final year of a multi-year effort to document the cultural resources of the park. On September 17, 1862, the town of Sharpsburg, Maryland, was the location of the bloodiest battle of the Civil War. The small town and the local farms would be forever changed. As part of an ongoing effort to document the farm buildings which existed during the Battle of Antietam, the 1988 HABS team documented the Mumma farm house, barn, springhouse and smokehouse, all of which were burned by the Confederate Army before the battle. The Mumma house was rebuilt in 1863, additions were made in 1898, the 1920s and 1940s. The 1750s springhouse is one of the oldest structures in the park. The team also documented the Otto house, around which the two armies clashed repeatedly during the third phase of the battle. Asbestos siding presently covers Civil War-era clapboards, which in turn mask the early 1800s log structure underneath. Also undertaken were comprehensive photographs of these sites, as well as a complete large-format photographic record of the monuments of the park. To aid in the maintenance of the monuments, a data base was developed which gives a complete listing and vital information which links to the individual photographs.



Otto House at the Antietam National Battlefield in Sharpsburg, Maryland.
Photographer: Joseph D. Balachowski, 1988

HABS Projects, cont'd.

Team Members:

- * Joseph D. Balachowski (supervisor), Architect, California Polytechnic Institute
- * Tina L. Fong, Architecture Technician, Mississippi State University
- * Stephen James, Architecture Technician, Bartlett School of Architecture, University College, London (ICOMOS)
- * Leslie Tergas, Architecture Technician, University of Florida
- * Frances P. Alexander, Historian, HABS Washington Office

CASTILLO DE SAN FELIPE DEL MORRO San Juan National Historic Site

San Juan, Puerto Rico

Project Leader: Kenneth L. Anderson, A.I.A., Chief of HABS

Cosponsors: Southeast Regional Office, National Park Service
San Juan National Historic Site
North Atlantic Historic Preservation Center

Guarding the entrance to San Juan Harbor is the Spanish fortification, El Morro. In 1539, construction began on the masonry structure, which rises to more than 140 feet above sea level in seven tiers. Part of the San Juan National Historic Site, it is used by the National Park Service to interpret the history of the San Juan fortification, which dates from the 16th century through World War II. The site includes San Cristobal and El Morro, as well as the island fortification of El Canuelo. These strongholds are connected by a series of fortified walls and, together, they form an enclosed unit of defenses.

El Morro is located at the far northwestern tip of San Juan and is the oldest of the three forts. Morro, meaning headland, was named "San Felipe Del Morro," in honor of King Philip of Spain.

1988 was the fifth year of a proposed seven-year recording program to document the historic fortifications associated with the San Juan National Historic Site. The measured drawings completed this year, as well as in past years, on both El Morro and San Cristobal will assist in the Southeast Preservation in the preparation of a historic structures report.

Team Members:

- * Jorge L. Sein (supervisor), Architect, HABS Washington Office
- * Michael Boldenow, Architecture Technician, North Dakota State University
- * Pascal Filatre, Architect, Centre d'Etudes Superieures d' Histoire et de Conservation des Monuments Anciens, Paris, France (ICOMOS)
- * Carl Krienen, Architecture Technician, The Catholic University of America
- * Belinda Sosa, Architecture Technician, Tulane University

HABS Projects, cont'd.

CHACO CULTURE NATIONAL HISTORICAL PARK

Bloomfield, New Mexico

Project Leader: Kenneth L. Anderson, A.I.A, Chief of HABS

Cosponsor: Southwest Regional Office, National Park Service
Chaco Culture National Park Service

Pueblo del Arroyo is one of the great houses within Chaco Canyon. In the early A.D. 1000s, the disparate small settlements of the Pueblo Indians organized interurban centers. Pueblo del Arroyo was a small city of three- to five-story houses set within a network of irrigation canals and a road network, all organized by a tightly-structured social system.

The 1988 project involved hand measuring and theodolite measuring to develop plans and sections of approximately one-third of the Pueblo. This multiple-summer project will result in documentation that will assist in the maintenance and preservation of the site and in the annotation of the Historic Structures Report.

Team Members:

- * Morgan A. Rieder (supervisor), Architect, University of New Mexico
- * Jim G. Duran, Architecture Technician, University of New Mexico

DUMBARTON OAKS PARK

Washington, D. C.

Project Leader: Paul D. Dolinsky, Architect

Cosponsor: National Capital Region, National Park Service

The Dumbarton Oaks Estate is an internationally renowned formal garden, designed by Beatrix Ferrand. A lesser known portion of the garden existed at the base of the formal area. It incorporated a stream and the surrounding watershed into a highly-designed naturalistic landscape, complete with rustic pavilions and waterfalls. This project, the first of a two-year effort, will further develop the landscape documentation standards of HABS. The 1988 product resulting from this project includes large format photography and a written history, in preparation for measured drawings.

Team Members:

- * Frances P. Alexander, Historian, HABS Washington Office
- * Denise A. Bradley, Landscape Architect, HAER Washington Office

HABS Projects, cont'd.

FOLSOM POWERHOUSE

Folsom, California

Project Leaders: Kenneth L. Anderson, A.I.A., Chief of HABS

Cosponsor: California Department of Parks and Recreation

Located on the American River, twenty-two miles upstream from Sacramento, the Folsom Powerhouse is one of the nation's earliest hydroelectric power plant for the generation of alternating current over long distance transmission lines. Opened in 1895, its four generators produced 3,000 kilowatts of power for Sacramento's electric street railway and for the commercial and business establishments in the city. Utilizing a 55-foot head, the powerhouse provided continuous service for 57 years when, in 1952, it was shut down by Pacific Gas and Electric and presented to the State of California Department of Parks and Recreation. Four pair of McCormick turbines, running at 300 rpm, powered the Folsom's generators and were reported to be the largest three-phase dynamos constructed at that time. Much of the original equipment, including the control switchboard, is still in place. In 1988, the HABS team recorded the powerhouse itself. A HAER team will record the equipment in 1989.

Team Members:

- * Steve C. Eccher (supervisor), Architecture Technician, University of Colorado
- * David R. Harland, Architecture Technician, University of Kansas
- * Alexandra Kettles, Architect, Edinburgh University, Edinburgh, Scotland (ICOMOS)
- * Kurt L. Klimt, Architecture Technician, College of the Redwoods
- * Steven A. Novy, Architecture Technician, University of Colorado

FORT McCOY

Sparta, Wisconsin

Project Leaders: John A. Burns, A.I.A., Architect
Catherine A. Lavoie, Architectural Historian

Cosponsor: Fort McCoy
U. S. Army Corps of Engineers

As part of a study of World War II temporary military structures, a prototypical project to produce an overview history and HABS documentation of selected structures was undertaken at Fort McCoy. The 1,300 buildings on the base, still in use as Army Reserve and National Guard training, are primarily 800 Series mobilization structures constructed between February and August of 1942. Three other prototypical projects, a 700 Series base, an Air Force base, and a Navy base, are being planned for next summer.

Team Members:

- * James A. Glass, Ph.D., Graduate of Cornell University
- * Martin Stupich, photographer, Graduate of Georgia State University

HABS Projects, cont'd.

920-930 F STREET, NW

Washington, D. C.

Project Leader: John A. Burns, A.I.A, Architect

Cosponsor: Clover F. Street Associates, L. P.
Rosslyn, Virginia
Edward L. Daniels, President

Clover Street Associates, as part of an agreement with the D. C. Historic Preservation Office, sponsored mitigative documentation for four 19th century commercial buildings in downtown Washington. Two of the buildings had stores on the first floor with offices on the floors above, the third was a hotel, and the fourth, the Atlantic Building, an eight-story office building.

The Atlantic Building was the most significant structure, being an early speculative high-rise. The building's Richardsonian Romanesque facade, designed in 1887, is stylistically up-to-date with similar structures in New York and Chicago. What is unusual is that the structural system is still brick-bearing walls with wooden joists, not skeletal frame, with only a limited use of iron beams in the first floor, roof, and facade.

Team Members:

- * Mark Schara (supervisor), Architect, University of Virginia
- * Christine B. Vina (project foreman), Architect, Texas Tech University, Lubbock
- * Mary Ellen Didion, Architecture Technician, The Catholic University of America
- * Thomas P. Forde, Jr., Architecture Technician, Virginia Polytechnic Institute and State University
- * Doris Michaela Grossing, Architect, Technical University of Vienna, Austria (ICOMOS)



HABS Projects, cont'd.

PICTURED ROCKS NATIONAL LAKESHORE

Munising, Michigan

Project Leader: Kenneth L. Anderson, A.I.A., Chief of HABS

Cosponsor: Midwest Regional Office, National Park Service
Pictured Rocks National Lakeshore

Pictured Rocks National Seashore is located on the Lake Superior shore of Michigan's Upper Peninsula. The name, Pictured Rocks, is derived from a unique geological feature within the national park. A wall of rock, sculpted into caves, arches and formations, rises from 500 to 200 feet along a 15-mile stretch of shoreline. Following generations of hunting and fishing by Ojibway Indians, French explorers used the region for trapping in the 17th and 18th centuries. In the late 19th century, logging the white pine forests was the major industry.

The Au Sable Light Station was constructed in 1874 to provide a much-needed navigational aid along an 80-mile stretch of shore otherwise empty of beacons. Numerous shipwrecks attest to the less-than-6-foot deep shoals that can extend a mile into Lake Superior. Measured drawings of the Au Sable Light Station were undertaken during the summer of 1988 for the National Park Service, which has begun a partial restoration of the station.

Team Members:

- * Hugh D. Hughes, (supervisor), Architecture Technician, University of Colorado
- * Jeffrey Bostetter, Architecture Technician, Miami University
- * Mellonee Rheams, Architecture Technician, Texas Tech University
- * Eric Schmidt, Architecture Technician, University of Houston

SCOTTY'S CASTLE

Death Valley, California

Death Valley National Monument

Project Leader: Kenneth L. Anderson, A.I.A., Chief of HABS

Cosponsors: Western Regional Office, National Park Service
Death Valley National Monument

This was the second year that a HABS team documented structures at this site. This year's project concentrated on the main house and annex. The original house (started in 1922) was completed as a box-like stucco structure, two stories in height, and approximately 32 feet by 96 feet. In 1925, Illinois businessman Albert M. Johnson, for whom the house was built, decided to reconstruct the main house and approached Frank Lloyd Wright. Wright produced subsequent plans, which were later rejected. In 1926, Charles A. MacNeill was hired to redesign the house. The center section of the main house was torn out, new walls built around the existing frame structure, and a new center section added.

HABS Projects, cont'd.

It was redesigned in a Spanish motif and the annex was added. The two structures provide over 12,000 square feet of floor space. All of the decorative elements of the house - iron works, lighting fixtures, woodwork - were designed by MacNeilledge. Many take their theme from the plants, animals, reptiles, and birds of the desert.

The team recorded the floor plans (two floors each of the main house and annex, and basement plan of the main house), exterior elevations, two sections, a reflected ceiling plan, and floor tile patterns.

Team Members:

- * John White (supervisor), Architect and Professor, Texas Tech University
- * Ronald M. Bailey, Architecture Technician, The Catholic University of America
- * Gordon P. Bingaman, Architecture Technician, Texas A&M University
- * Holly K. Chamberlain, Historian, HABS/HAER Washington Office
- * Jan Engle, Architecture Technician, Texas Tech University
- * Scott Weston, Architecture Technician, Columbia University



At left, Gordon Bingaman (on tower) and Ron Bailey (on ground) measure Scotty's Castle. Above, Scott Weston (l) and Gordon Bingaman (r) measure a portion of the roof.
Photographer: John P. White, 1988

HABS Projects, cont'd.

SLEEPING BEAR DUNES NATIONAL LAKESHORE

Empire, Michigan

Project Leader: Kenneth L. Anderson, A.I.A., Chief of HABS

Cosponsors: Midwest Regional Office, National Park Service
Sleeping Bear Dunes National Lakeshore

Located on the northwestern shore of Michigan's Lower Peninsula, Sleeping Bear Dunes National Lakeshore receives its name from a massive, 500 foot high sand dune.

The name itself is derived from a Chippewa Indian legend - the dune being a massive sleeping bear, and the North and South Manitou Islands, her cubs. The rich history of the area is filled with such stories of Indians, lumbermen, merchant sailors, and farmers. In 1858, the U. S. Lighthouse Service erected a brick masonry lighthouse on South Manitou Island to guide ships through the narrow passage between the islands and the Leelanau Peninsula of Michigan. This was replaced with a taller, more efficient lighthouse in 1871.

During the summer of 1988, measured drawings were produced of the 1858 keeper's residence and the 1871 lighthouse.

Team Members:

- * James N. Ferguson (supervisor), Architect, University of Florida
- * Judith E. Collins, Architecture Technician, Auburn University
- * Ursula Markowitz, Architect, Fachbereich Architektur, Fachhochschule Aachen, Federal Republic of Germany (ICOMOS)
- * Richard S. Naab, Architecture Technician, The Catholic University of America

TEXAS STATE CAPITOL

Austin, Texas

Project Leader: Kenneth L. Anderson, A.I.A., Chief of HABS

Cosponsor: Texas State Preservation Board

This was the third and final year of a recording program to comprehensively document the 1888 capitol building, one of the largest and most complex buildings ever recorded by a HABS summer team. This summer, the team concentrated on the consolidation of all previous work, the delineation of drawings including a fully-rendered principal elevation, the terrazzo floor designs, and the completion of building sections. The project had two components: continued utilization of Computer-Aided Drafting & Design system (CADVANCE), provided by the University of Texas at Austin, and traditional drafting.

HABS Projects, cont'd.

Team Members:

- * Robert C. Giebner (supervisor), Architect and Professor, University of Arizona
- * Stuart V. Eichler, Architecture Technician, College of New York
- * Rudd M. Long, Architect, University of Texas
- * Murray Miller, Architect, Faculty of Architecture, Technical University of Nova Scotia, Canada
- * David M. Pierce, Architecture Technician, Texas Tech University

VIRGINIA STATE CAPITOL

Richmond, Virginia

Project Leader: Paul D. Dolinsky, Architect

Cosponsor: Department of General Services, Commonwealth of Virginia

The Virginia State Capitol, conceived in 1785, is the second oldest state capitol in the United States. Designed by Thomas Jefferson while he was in France, the building was modeled after a Roman temple, the Maison Carree. The structure remained relative unchanged until 1902, when it was renovated and enlarged with an addition. This addition consisted of front stairs and two wings with connecting hyphens to house the Senate and the Hall of the House of Delegates.

The first year of a two-year project, this summer's documentation work consisted of measured drawings, including plans, sections and details, along with a chronological history from 1785 through its total renovation in 1964. The drawings are complemented with comprehensive large-format black and white photographs taken by HABS photographer Jack E. Boucher. Both the original building, as designed by Thomas Jefferson, and the wings, completed in 1904, will be thoroughly recorded and documented. This will not only demonstrate how a Roman temple form was made to house a public institution, but how it evolved and how it was adopted to satisfy the different needs that emerged over time.

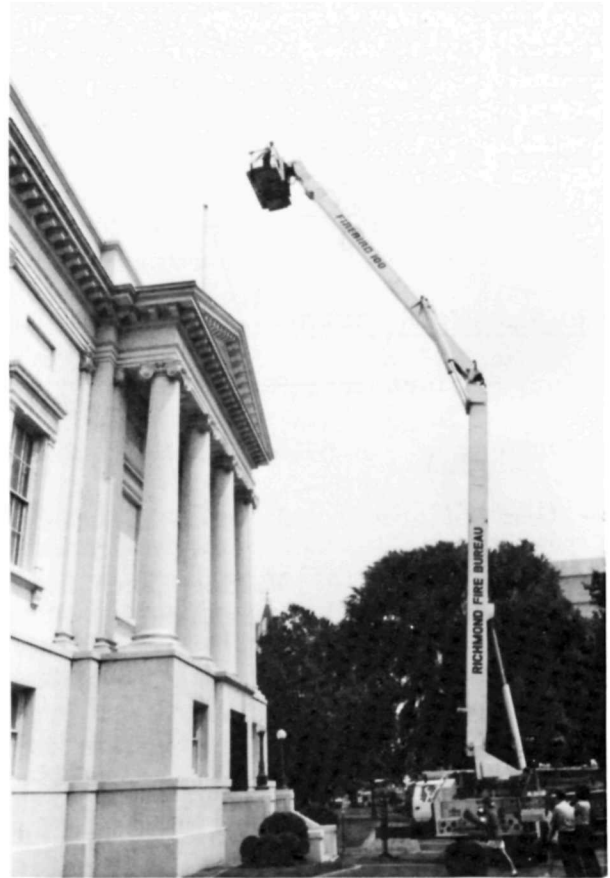
Team Members:

- * Frederick J. Lindstrom (supervisor), Architect, Virginia Polytechnic Institute and State University
- * Eva Christina Blom, Architect, Helsinki University of Technology, Helsinki, Finland (ICOMOS)
- * Patrick C. Cooper, Architecture Technician, Texas Tech University
- * Nancy Harrington, Architecture Technician, University of Virginia
- * Richard Houghton, Architecture Technician, University of Virginia
- * Kathryn E. Powell, Architecture Technician, University of Illinois, Champaign-Urbana
- * Kimberly Prothro, Historian, University of Virginia

HABS Projects, cont'd.



Kathryn Powell measures the molding at the base of the dome in the rotunda.
Photographer: Frederick J. Lindstrom, 1988



A cherry picker from the Richmond Fire Bureau assists the team in measuring the state capitol building.
Photographer: Frederick J. Lindstrom, 1988

THE WHITE HOUSE

Washington, D. C.

Project Leaders: Kenneth L. Anderson, A.I.A., Chief of HABS
William W. Lebovich, Architectural Historian

Cosponsor: Executive Mansion
National Capital Region, National Park Service

This five-year, three-phase documentation project provides HABS with a rare opportunity to systematically record the exposed Aquia Creek sandstone of the White House exterior. Recording will be done, while the National Capital Region removes 200 years of paint, thus allowing the masonry to be examined and restored. Each phase of documentation will involve stereophotogrammetric recording, large format photography, and hand measuring. Phase I, conducted this summer, concentrated on the north facade and architectural details, on delineating the sandstone deterioration and graining patterns of the east elevation, and on hand

HABS Projects, cont'd.

measuring and recording all four elevations of the third floor living quarters. Phase II, scheduled for 1989, will record the south elevation, while Phase III will be coordinated with the planned paint removal on the west elevation in 1991. The records produced by HABS will assist in the ongoing restoration work and in future White House maintenance.

Team Members:

- * Timothy A. Buehner (supervisor), Architect, Ball State University
- * Kristin A. Beckman, Architecture Technician, University of Wisconsin
- * Scott D. Hall, Architecture Technician, Texas Tech University
- * Daniel R. Winkert, Architecture Technician, Tulane University

WILDER RANCH

Santa Cruz, California

Project Leader: Kenneth L. Anderson, A.I.A., Chief of HABS

Cosponsors: Wilder Ranch State Park
California Department of Parks and Recreation

Located 70 miles south of San Francisco near Santa Cruz, Wilder Ranch is one of the oldest cattle ranch and dairy operations on the California coast. By the late 19th century, the ranch was famous for the butter and milk it provided to San Franciscans. Besides numerous dairy-related buildings, the ranch includes an adobe structure dating from the first half of the 19th century and houses from the early 20th century.

This summer, measured drawings were produced on an 1880 shop and bunkhouse, an 1891 horse barn, an 1880 granary, and a cow barn, part of which was first constructed before 1871 and added onto in 1875. A site plan was also produced.

Team Members:

- * Christian D. Overbey (supervisor), Architecture Technician, University of Kansas
- * Steve C. Eccher, Architecture Technician, University of Colorado
- * Alexandra Kettles, Architect, Edinburgh University, Edinburgh, Scotland (ICOMOS)
- * Shelly Milling, Architecture Technician, Mississippi State University

WILL ROGERS STATE PARK

Los Angeles, California

Project Leader: Kenneth L. Anderson, A.I.A., Chief of HABS

Cosponsors: Will Rogers State Historic Park
California Department of Parks and Recreation

In 1921, Will Rogers purchased a site in the Santa Monica Mountains to construct his last home. Initial development included laying out a polo field and a barn for the ponies. By 1924, a one-story residence was complete, as well as a two-story structure for guests and for the chauffeur. Numerous additions and

HABS Projects, cont'd.

enlargements were made over the years, including an impressive rotunda horse barn flanked by wings with stalls. The HABS 1988 team documented with measured drawings the main house, the rotunda horse barn, and the guest house.

Team Members:

- * Kurt M. Klimt (supervisor), Architecture Technician, University of Kansas
- * Stephen G. Bunyard, Architecture Technician, Texas Tech University
- * David R. Harland, Architecture Technician, College of the Redwoods
- * Steven A. Novy, Architecture Technician, University of Colorado

WOMEN'S RIGHTS NATIONAL HISTORIC PARK

Seneca Falls, New York

Project Leader: Kenneth L. Anderson, A.I.A., Chief of HABS

Cosponsors: Women's Rights National Historic Park
North Atlantic Preservation Center

The Wesleyan Chapel, site of the first Women's Rights convention in 1848, has been extensively altered since its construction in 1843. The brick building has served as a Methodist chapel, an opera house, a theater, an automobile dealership and, most recently, a laundromat and apartment house. Two-thirds of each east and west wall and four of six wood roof trusses are all that remain of the original building fabric.

A national design competition was held in 1987 to create a monument to commemorate the convention. to recognize the ongoing women's movement, and to create a focal point for the Women's Rights National Historical Park. The winning scheme preserves the original fabric of the chapel and incorporates adjacent property to create an amphitheater, a waterfall, and a meeting place to continue the site's historic use.



The measured drawings produced by the HABS team will clarify and define the building's original fabric and will be used as a major resource for developing construction drawings for the monument. Also measured was the adjacent Seneca Falls Village Hall. The steel frame and brick building was constructed in 1914 for use as an automobile factory. It will be remodeled for use as the visitor/interpretive center for the park.

HABS team members Jana Gross, Betsey Verd, David Wallace, and Guillaume Amand record the measurements of the Wesleyan Chapel. Photographer: Deborah Rehn, 1988

HABS Projects, cont'd.

Team Members:

- * Deborah M. Rehn (supervisor), Architect, Washington University
- * Guillaume Amand, Architect, Centre d'Etudes Superieures d'Histoire et de Conservation des Monuments Anciens, Paris, France (ICOMOS)
- * Jana L. Gross, Architecture Technician, University of Nebraska
- * Betsey A. Verd, Architecture Technician, The University of Washington
- * David Wallace, Architecture Technician, Auburn University

WORLD WAR II TEMPORARY BUILDINGS

Washington, D. C.

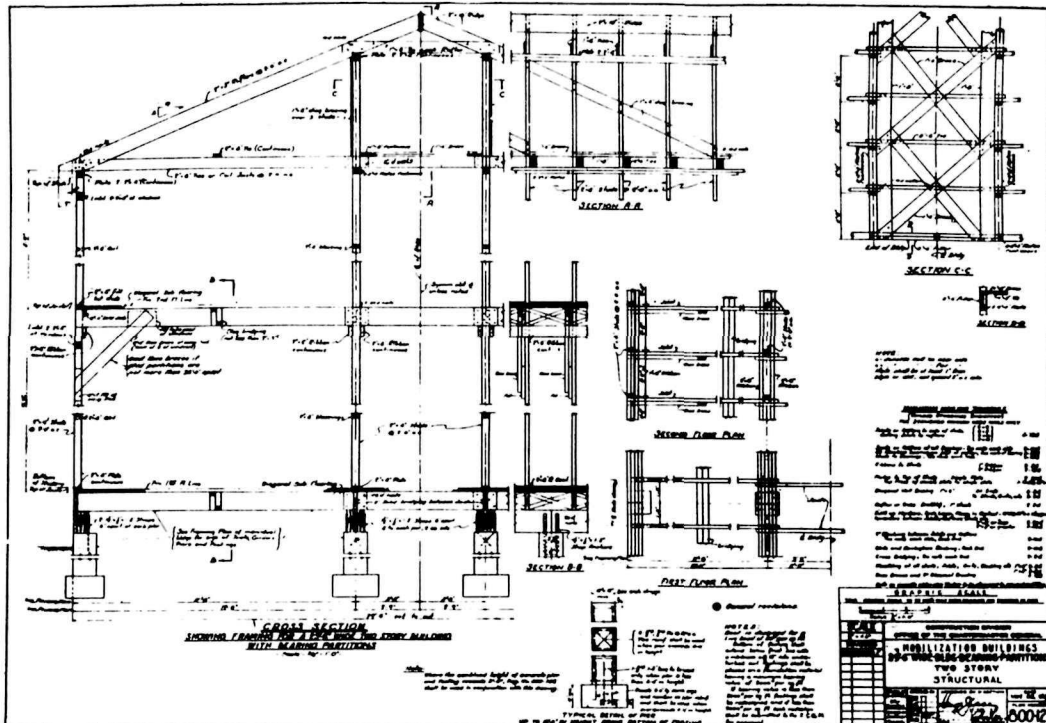
Project Leader: John A. Burns, A.I.A., Architect
Catherine C. Lavoie, Historian

Cosponsor: U. S. Army Corps of Engineers

The Corps of Engineers is the lead in the Department of Defense in a multi-year program to produce mitigative documentation of standardized World War II temporary buildings. There are thousands of these structures remaining nationwide. The Army alone has over 23,000 buildings, totalling over 90,000,000 square feet. This summer, HABS produced an overview history of the mobilization construction effort to serve as a framework against which to evaluate World War II temporary buildings at individual bases.

Team Members:

- * Perry J. Bush, Historian, Carnegie-Mellon University
- * Russell M. Echols, Architect, Texas A&M University
- * Diane Shaw Wasch, Historian, George Washington University



Standardized Building Partitions. Courtesy of the U. S. Army

AMERICA'S INDUSTRIAL HERITAGE PROJECT

The America's Industrial Heritage Project (AIHP) of the National Park Service promotes preservation, tourism, and economic development in a nine-county region of southwestern Pennsylvania. The primary focus is on the cultural resources concerned with iron- and steel-making, coal, and transportation. To this end, HABS/HAER has been assisting AIHP by surveying and documenting historic industrial, engineering, and architectural works. The overall project had many components:

ALTOONA: INTOWN

Altoona, Pennsylvania

Project Leader: Kim Hoagland, Historian

Cosponsor: America's Industrial Heritage Project

Founded in 1849 by the Pennsylvania Railroad Company, Altoona became the site of the country's largest railroad shops. Located on the eastern side of the Alleghenies, Altoona had locomotive and car repair and construction shops. The PRR's payroll supported three-quarters of Altoona's population, which was 82,000 at its peak in 1930.

In this project, the intown area of Altoona, including the downtown area and several residential neighborhoods, was surveyed for historic architectural resources. The downtown was largely rebuilt in the early twentieth century, and most of the commercial buildings exhibit a neo-Classical influence. The neighborhoods have a number of houses from the late nineteenth century, each individually designed and constructed. Two hundred and eighty-two buildings were surveyed.

Team Member:

* Kim Hoagland, Senior Historian, HABS Washington office

BROWNSVILLE

Brownsville, Pennsylvania

Project Leader: Kim Hoagland, Historian

Cosponsor: America's Industrial Heritage Project

Located on the Monongahela River on the western edge of Fayette County, Brownsville was laid out in 1814. By 1835, it was the terminus of the National Road, where travelers shifted from road to river. Boat-building has been an industry here since the eighteenth century. Market Street, the main street through town, has an impressive collection of pre-Civil War commercial buildings, while the parallel streets feature similar residential buildings.

America's Industrial Heritage Project, cont'd.

In this small project, a general history of the town was compiled from secondary sources and graphic material. A dozen pre-Civil War commercial buildings were surveyed.

Team Member:

* Norene Halvonik, Historian, George Washington University

CAMBRIA COUNTY (BERWIND-WHITE) COAL MINING

Windber, Pennsylvania

Project Leader: G. Gray Fitzsimons, Historian/Engineer

Cosponsor: America's Industrial Heritage Project

Among the rugged mountainous region of southwestern Pennsylvania, Cambria County, contains rich deposits of high-quality, low-sulphur bituminous coal. The county's earliest major mining was carried out in conjunction with the ironmaking businesses in Johnstown in the early 1950s, principally that of the Cambria Iron Company. By the late 1890s, the Philadelphia-based Berwind-White Coal Company established a large mining operation in southern Cambria and northern Somerset counties. One of these mines, Eureka No. 40, was the subject of a HAER history and photodocumentation project. The history focused on the development of and the various changes to the mine over the course of its seventy odd years of operation. HAER photographer Jet Lowe shot large-format photographs of several structures, including the 1928 Roberts & Schafer tippel and separator facility (a steel and reinforced concrete structure), the ca. 1905 motor barn, the 1906 power plant, and the ca. 1910s wash house.

Team Member:

* Demian J. Hess, Historian, Brown University

CAMBRIA IRON WORKS

Johnstown, Pennsylvania

Project Leader: John A. Burns, A.I.A., Architect

Cosponsor: America's Industrial Heritage Project

The measuring team at the Bethlehem Steel Lower Works continued, for the second year, to record structures remaining from the Cambria Iron Company. This year's drawings documented the c.1865 foundry building and its 1880 wing, the blowing engine house for blast furnaces 5 and 6 (ca. 1873, 1898, and 1910), and a drawing of the c.1881 wooden roof truss for the car shop. Both the foundry and blowing engine house are brick with clear span iron roof trusses.

America's Industrial Heritage Project, cont'd.



Dennis McGrath and Noel O'Dwyer ride a cherrypicker to measure the iron works building. Scott Clanton and Craig Strong assist from below. Photographer: K. Edward Lay, 1988



Dennis McGrath and Noel O'Dwyer measure a second-story window from the cherrypicker. Photographer: K. Edward Lay, 1988

The dimensions were compiled from both hand measurements and documentary drawings in the Bethlehem archives. The measured drawings show the buildings as they would have appeared around 1910.

Team Members:

- * K. Edward Lay (supervisor), Architect and Professor, University of Virginia
- * Scott Clanton, Architecture Technician, Texas A&M University
- * Dennis E. McGrath, Architecture Technician, University of Kansas
- * James N. O'Dwyer, Architect, University College Dublin, Ireland (ICOMOS)
- * Craig N. Strong, Architecture Technician, University of Louisiana

America's Industrial Heritage Project, cont'd.

CANAL TOWNS

Johnstown, Pennsylvania

Project Leader: Kim Hoagland, Historian

Cosponsor: America's Industrial Heritage Project

The Pennsylvania Main Line Canal provided access to Pittsburgh from Philadelphia, from the Delaware River to the Mississippi. Completed in 1835, the canal crossed the Alleghenies on the Allegheny Portage Railway, an engineering marvel. At the time, western Pennsylvania was relatively unpopulated; the canal sparked settlement and development along its path.

Alexandria, in Huntingdon County on the eastern side of the Alleghenies, and Saltsburg, in Indiana County on the western side, are two towns whose fortunes rose with the canal. Although they were both established long before the canal, these two towns experienced a boom in activity during the canal era, which lasted only until 1855 when the railroad surpassed the canal as a means of transportation. Alexandria and Saltsburg have numerous houses influenced by the Federal and Greek Revival styles, which date from the canal era. About fifty buildings were recorded with large format photographs and written documentation.

Team Members:

- * Dorothy Burlingame (supervisor), Historian, University of Vermont
- * Kristin Belz, Historian, University of Virginia
- * Karen M. Genskow, Historian, Sangamon State University
- * David Ames, photographer, University of Delaware

COMPANY TOWNS

Johnstown, Pennsylvania

Project Leader: Kim Hoagland, Historian

Cosponsor: America's Industrial Heritage Project

One of western Pennsylvania's greatest natural resources is bituminous coal. As a result of the remote locations of the coal mines, the coal companies were forced to provide housing for their workers. Through the provisions of housing, the companies were able to attract a certain type of worker -- in this case, men with families -- and to exercise a certain amount of control over them.

Star Junction, in Fayette County, Windber in Somerset County, and Colver in Cambria County are three coal company towns. Thriving in the 1890-1930 period, these towns feature identical gable-roofed houses set in grid plans. A clear hierarchy of worker and manager is reflected in the houses' locations and sizes. A company store, theater, school, and other public buildings also dot the

America's Industrial Heritage Project, cont'd.

landscape. Through this project, the characteristics of these towns were identified and the implications for the residents were discussed.

Team Members:

- * Meg Mulrooney, Historian, University of Delaware
- * Jet Lowe, Photographer, HAER Washington office

IRON FURNACES IN BLAIR AND CAMBRIA COUNTIES

Johnstown, Pennsylvania

Project Leader: G. Gray Fitzsimons, Historian/Engineer

Cosponsor: America's Industrial Heritage Project

Beginning in the early 1800s, ironmasters built numerous charcoal iron furnaces throughout the Juniata River Valley in central Pennsylvania. Associated with many of these furnaces were charcoal houses, forges, grist mills, workers' housing, ironmasters' houses, and various farm buildings. The larger of these industrial hamlets came to be called iron plantations. Of the dozen or so iron plantations that once existed in Blair and Cambria counties, the Mount Etna Furnace retains many of its early structures, including the furnace stack, remains of the charcoal house, the ironmaster's house, a tenant house, a company store, and a large stone barn. Etna Furnace was the subject of a HAER history, photographic documentation, and measured drawings project.

The history focused on the three families that operated the furnace over the course of its seventy years in and out of blast (the furnace was blown out in 1873), and examined the changes of its operations and the transport of Etna's pig and wrought iron to market. HAER photographer Jet Lowe provided large format photography of the extant buildings, as well as the ruins of the charcoal house and furnace stack.

Team Members:

- * Christine E. Davis (supervisor), Historian, University of Pittsburgh
- * Laura L. Sparks, Historian, University of Missouri

JOHNSTOWN

Johnstown, Pennsylvania

Project Leader: Kim Hoagland, Architectural Historian

Cosponsor: America's Industrial Heritage Project

Johnstown, Pennsylvania, the site of a major nineteenth-century steel works, has a rich ethnic heritage. Nestled in the Conemaugh valley, the city has well-defined neighborhoods, mostly rebuilt after the 1889 flood. Four of these neighborhoods

America's Industrial Heritage Project, cont'd.

were the subject of study this summer: Downtown, Westmont, Cambria City, and Minersville.

Downtown, as the name implies, is the center of commercial activity. The heart of downtown contains many flood-surviving buildings, all brick or stone. Cambria City lies downstream; it was a working class, ethnic neighborhood, populated at the turn of the century by Eastern Europeans. Minersville, directly across the river from Cambria City, was developed later by the Cambria Iron Company, for its workers. Westmont sits on top of a bluff overlooking the city; it too was developed by the Cambria Iron Company after the flood to house its managers, as well as some workers. Unlike Cambria City and Minersville, Westmont has wide tree-lined streets, diverse architectural styles, and a suburban atmosphere. About 1,000 buildings were surveyed.

Team Members:

- * Kim Wallace (supervisor), Historian, University of Pennsylvania
- * Natalie Gillespie, Historian, Carnegie-Mellon University
- * Bernadette Goslin, Historian, Planning Department, Dublin County Council, Dublin, Ireland (ICOMOS)
- * Terri L. Hartman, Historian, University of California
- * Jeffrey Hickey, Historian, University of Colorado
- * Jet Lowe, Photographer, HAER Washington office
- * Cheryl Powell, Historian, University of Delaware

MOUNT ETNA FURNACE

Etna, Pennsylvania

Project Leader: John A. Burns, A.I.A., Architect

Cosponsor: America's Industrial Heritage Project

The measuring team at Etna Furnace drew three structures associated with the operation of this early 19th century iron furnace, the stone ironmaster's house, which had recently suffered fire damage, the stone workers' barracks or tenant houses, and the stone and heavy timber mule and horse barn. Other structures remaining for future recording include the office, company store, overseer's house, and ruins of the blacksmith shop and iron furnace itself.

Team Members:

- * K. Edward Lay (supervisor), Architect, Professor, University of Virginia
- * Christine Davis, Historian, University of Pittsburgh
- * David A. Kalhoefer, Architecture Technician, Texas Tech University
- * Anne McDiarmid, Architect, Edinburgh University, Edinburgh, Scotland (ICOMOS)
- * Mark E. Pierson, Architecture Technician, Auburn University
- * Laura Sparks, Historian, University of Missouri
- * Gilbert Witte, Architecture Technician, University of Illinois

HAER MARITIME INITIATIVE

In this third year of the HAER maritime initiative, four projects were undertaken to begin or complete documentation of seven historic vessels, with funding from the National Park Service's Maritime Preservation Program. The final draft of HAER's Guidelines for Recording Historic Ships was used and tested on each project prior to its publication, scheduled for Fall 1988. Two of the recording projects produced measured drawings--the square rigger BALCLUTHA and the sidewheel ferry TICONDEROGA. The third project resulted in histories of the Schooner C. A. THAYER, the tug HERCULES, the Scow Schooner ALMA, and the ferry EUREKA, all located at the San Francisco Maritime National Historical Park. The fourth project focused on the history of the Pilot Schooner ALABAMA, for which HAER made measured drawings in 1986. Of these vessels, all but the ALABAMA are National Historic Landmarks.

Schooner ALABAMA History Project

Hampton Bays, New York

Project Leader: Richard K. Anderson, Jr., Architect

Cosponsor: Maritime Preservation Program, National Park Service

During the summer of 1986, the schooner ALABAMA was documented with measured drawings and large-format photographs, leaving the history to be completed this year. The project historian thoroughly researched the vessel's designer, Thomas F. McManus; her builder, the Pensacola Shipbuilding Company of Pensacola, Florida; and her original owners, the Mobile Bar Pilots Association of Mobile, Alabama. McManus was the United States' quintessential fishing schooner designer, and no biography of him has ever been written. The project has turned up much previously-unknown original material, including ship plans and hand-written autobiographies. In addition, the project has determined that ALABAMA may be the only unaltered survivor of some 440 vessels designed by McManus, making her eligible for National Historic Landmark designation. This project was initiated to test the new history guidelines for recording ships.

Team Member:

William M. P. Dunne, Historian, State University of New York

BALCLUTHA

San Francisco, California

Project Leader: Richard K. Anderson, Jr., Architect

Cosponsors: Maritime Preservation Program, National Park Service
National Maritime Museum (now San Francisco Maritime
Historical Park)
Golden Gate National Recreation Area

This was the second year of a two-year project to document this historic steel-hulled square rigger, moored in San Francisco and owned by the National Park Service, under the auspices of the Golden Gate National Recreation Area.

HAER Maritime Initiative, cont'd.

The six-member HAER team concentrated on details of this National Historic Landmark, including 24 sheets of details for major features and rigging, plus several 9-1/2-foot drawings covering the ship's outboard profile and structural details of the decks. In addition, the vessel's "lines" or hull contours were "lifted" and drawn. An extensive history of the ship is in preparation by Norman Brouwer, Historian, South Street Seaport Museum in New York City. Photographs were taken by Jet Lowe, HAER photographer.

Team Members:

- * Robbyn Jackson (supervisor), Architect, HAER Washington Office
- * T. Paul Bates, Architecture Technician, Auburn University
- * Mark T. Bittle, Architecture Technician, Virginia Polytechnic Institute and State University
- * Pamela McMullen, Architecture Technician, University of Florida, Gainesville
- * Jacqueline Yahn, Architecture Technician, Virginia Polytechnic Institute and State University
- * Chang Yi, Architecture Technician, University of Arizona



BALCLUTHA
Photographer: Jet Lowe, 1988

NATIONAL MARITIME MUSEUM HISTORIC SHIPS HISTORY PROJECT

San Francisco, California

Project Leader: Richard K. Anderson, Jr., Architect

Cosponsor: Maritime Preservation Program, National Park Service
National Maritime Museum (now San Francisco Maritime
Historical Park)
Golden Gate National Recreation Area

In order to document the historic ships of the National Maritime Museum for the HAER collection, HAER undertook the research and writing of histories for four of the Museum's ships. The vessels concentrated on were the steam tug HERCULES, the sidewheel steam ferry EUREKA, the Scow Schooner ALMA, and the Lumber Schooner

HAER Maritime Initiative, cont'd.

C. A. THAYER. Selected measured drawings of these vessels will be made by HAER at a later date. Large-format photography was completed by Jet Lowe, HAER photographer.

Team Member:

* Eric L. Clements, Historian, University of Delaware

TICONDEROGA PROJECT

Shelburne, Vermont

Project Leader: Richard K. Anderson, Jr., Architect

Cosponsor Maritime Preservation Program, National Park Service
The Shelburne Museum, Shelburne, Vermont

This was the first year of a projected three- to four-year project to document this 220-foot National Historic Landmark, the last surviving all-passenger ferry in the United States equipped with a one-cylinder walking beam steam engine. It is owned by the Shelburne Museum. The four-member HAER team concentrated on producing a detailed inboard profile for this at 3/8" scale, plus a deck plan of the lower hold, including boiler room and all major machinery spaces. Jet Lowe, HAER photographer, completed the photography. Carried out as a pilot project for developing HAER's Guidelines for Recording Historic Ships, this is the first steam-powered ship HAER has documented.

Team Members:

- * Ellen Stoner (supervisor), Architect, University of Illinois, Urbana-Champaign
- * Alexis Casariego, Architecture Technician, Tulane University
- * Angela Gardner, Architecture Technician, Columbia University
- * Leslie Ullman, Registered Architect, Oregon



Photographer: Jet Lowe, 1988

HAER PROJECTS

ARKANSAS HISTORIC BRIDGES

Little Rock, Arkansas

Project Leader: Eric N. DeLony, Chief of HAER

Cosponsors: Arkansas State Highway & Transportation Department
Arkansas State Historic Preservation Office

HAER has targeted certain States which have completed historic bridge inventories to document the most historically significant bridges in that State to HAER standards, for inclusion in the HAER collection at the Library of Congress. Arkansas is the fourth State (Ohio, Wisconsin and New York being the others) to participate in this program, and the first State to document all National Register-eligible bridges, the reason being that the State Historic Preservation Office (SHPO), under the leadership of State Historic Preservation Officer Cathy Buford, assumed responsibility for documenting seventeen of the bridges, while the HAER team recorded thirty-six. The Arkansas State Highway & Transportation Department provided the funding, served as project advisors, and assisted in logistics with county highway departments.

Two important bridges documented were the Cotter Bridge and the Springfield Bridge. Because of its unusual open spandrel arch design and concrete construction techniques, the 1930 Cotter Bridge recently was designated a National Historic Civil Engineering Landmark by the American Society of Civil Engineers. The Springfield Bridge was one of the first all-metal bridges built in Arkansas. Based on a metal bowstring arch design patented by Zenas King of the King Iron Bridge Works of Cleveland, Ohio, in 1861, this 1871 structure is one of the few bridges known to have been fabricated by a King Iron Bridge Works subsidiary in Iola, Kansas. It is the oldest bridge in Arkansas and is one of the oldest, all-metal truss bridges in the South.

Mike Swanda, archeologist with the SHPO staff, was the main liaison with the HAER team and the person responsible for the project. Massachusetts, Oregon, and California are possibilities for HAER bridge recording projects in 1989.



Team takes measurements of the Springfield Bridge in Springfield, Arkansas. l-r, Lola Bennett, Robert Arzola, Sean O'Reilly, and J. Finbarr Garvey. Photographer: Corinne Smith, 1988

HAER Projects, cont'd.

Team Members:

- * Lola M. Bennett (supervisor), Historian, University of Vermont
- * Robert Arzola, Architecture Technician, Texas Tech University
- * Louise T. Cawood, Photographer, Louisiana Tech University
- * Michael S. Cook, Architecture Technician, University of Arkansas
- * J. Finbarr Garvey, Architect, University College, Dublin, Ireland (ICOMOS)
- * Theodore M. Jones, Architecture Technician, University of Arkansas
- * Sean O'Reilly, Historian, The Irish Architectural Archive, Dublin, Ireland (ICOMOS)
- * Corinne L. Smith, Engineer, Cornell University
- * Kathryn Steen, Historian, Luther College

BLOCK ISLAND SOUTHEAST LIGHT

Block Island, Rhode Island

Project Leaders: Eric N. DeLony, Chief of HAER
Richard K. Anderson, Jr., Architect
Catherine C. Lavoie, Historian

Cosponsor: United States Coast Guard
Block Island Historical Society
Southeast Light Foundation, Inc.

The Block Island Southeast Light was built in 1873 and is one of only nine lighthouses remaining in the United States still employing a 19th century Fresnel lens for its beacon. It was selected for documentation because of its surviving lens technology, attractive Italianate building architecture and endangerment from an eroding cliff. The four-member team concentrated on producing isometric drawings of the building, its original and present lenses, plus sheets interpreting the development of Fresnel lighthouse lenses. This was a pilot project, designed in part to commemorate the bicentennial of the U. S. Coast Guard and to provide the Coast Guard with a model project on which to base further such recording projects.

Team Members:

- * Mabel Ann Baiges (supervisor), Architecture Technician, Kansas State University
- * Patricio Del Real, Architecture Technician, Washington University
- * Lee Ann Jackson, Architecture Technician, Auburn University
- * Mary M. Thomas, Historian, University of Notre Dame

HAER Projects, cont'd.

CHESAPEAKE AND OHIO RAILROAD
New River Gorge National River

Oak Hill, West Virginia

Project Leaders: Eric N. DeLony, Chief of HAER
Robie Lange, Historian

Cosponsor: Denver Service Center, National Park Service
New River Gorge National River

The railroad town of Thurmond, located in the magnificent New River Gorge National River of West Virginia, has been encapsulated in a time-warp dating from the period of intensive coal mining activities during the 1920s and 1930s, when more coal was shipped through Thurmond than any point on the Chesapeake & Ohio Railroad. Consequently, the town has been preserved in pristine condition with its depot, coaling tower and shop facilities intact. Thurmond also is unique because its mainstreet fronts not on a road, but rather the mainline tracks of the C&O. HAER documentation of the community was requested by the Denver Service Center of the National Park Service and the Park as prerequisite information to a historic structures report being prepared on the site.

Team Members:

- * Julie Pearson (supervisor), Architect, Texas Tech University
- * Billy Joe Peyton (supervisor), Historian, West Virginia University
- * Dana Lee Lockett, Architecture Technician, Texas Tech University
- * Jennifer McCormick, Architect, Duncan of Jordanstone College of Art, Dundee, Scotland (ICOMOS)
- * Charles S. McCray, Architecture Technician, Texas Tech University
- * Jeffrey F. Winstel, Historian, Eastern Michigan University

DELAWARE AQUEDUCT & ZANE GREY HOUSE
Upper Delaware National Scenic and
Recreational River

Narrowsburg, New York

Project Leaders: Eric N. DeLony, Chief of HAER
William W. Lebovich, Architectural Historian

Cosponsor: Upper Delaware National Scenic and Recreational River

The Delaware Aqueduct (1848) was the first structure recorded by HAER in 1969. At that time, it was used as a tollbridge. Designed by John Roebling, the aqueduct is the oldest suspension bridge in the United States, precursor to the Brooklyn Bridge. Since then, it has been purchased by the National Park Service, rehabilitated for vehicular use, and reconstructed to its original appearance as a Delaware & Hudson Canal aqueduct. The 1988 documentation updates the 1969 record and includes the administrative history of the rehabilitation project and documentation on the toll house, for which purpose the bridge served nearly half its life. Since then, it has undergone rehabilitation to bring it closer to its original appearance as an aqueduct.

HAER Projects, cont'd.

The Zane Grey House, documented to HABS standards, was inhabited by the author from 1906 to 1918, while writing his first western novel, Riders of the Purple Sage. The documentation produced this summer include measured drawings of each phase of its construction history, a history of the house and site, and large format photographs of its present use as a house museum of the author's artifacts. John Hutzky, Superintendent, and Sandra Speers, Chief of Planning & Support Services, arranged for HAER to document the house and aqueduct.

Team Members:

- * Brian D. Bartholomew (supervisor), Architect, Briner Scott Architects, Vail, Colorado
- * Scott Barber, Architecture Technician, University of Wisconsin, Milwaukee,
- * Sylvie C. Browne, Historian, Rensselaer Polytechnic Institute (ICOMOS/Canada)
- * Ann Guerette, Architect, Laval University, Quebec, Canada (ICOMOS)
- * Elizabeth F. Knowlan, Architecture Technician, University of Houston
- * Nancy Spiegel, Historian, University of Delaware

ILLINOIS & MICHIGAN CANAL

Washington, D. C.

Project Leader: G. Gray Fitzsimons, Historian/Engineer

Cosponsor: Illinois & Michigan Canal National Heritage Corridor

Following on the heels of the HAER survey of the Illinois and Michigan Canal National Heritage Corridor in 1986-87, historian Kenneth Rose prepared the manuscript for the publication of this effort. Featured are the remnants of the I&M Canal, completed in 1848 and extending nearly 100 miles from Chicago to Peru, Illinois, including the Joliet Iron Works (later part of U. S. Steel), Commonwealth Edison's Fisk Street Power Station, and many other sites. In addition, large-format photographs of Chicago's bascule bridges, the Joliet Iron Works, and a host of Rock Island, Chicago & Alton, Santa Fe, and Elgin, Joliet & Western railroad structures were taken by Wisconsin photographer, Martin "Marty" Stupich. Lee Hanson, Executive Director of the Illinois and Michigan Canal Heritage Corridor, arranged for the project.

Team Members:

- * Kenneth D. Rose, Historian, University of California at Los Angeles
- * Martin Stupich, Photographer, Georgia State University

HAER Projects, cont'd.

NATIONAL PARK SERVICE HISTORIC BRIDGES

Washington, D. C.

Project Leaders: Eric N. DeLony, Chief of HAER
Robie Lange, Historian

Cosponsor: Federal Roads Program, National Park Service

Along with the HAER/State Highway Department/State Historic Preservation Office initiatives to record the historic bridges of the United States, the National Park Service's Federal Roads Program, directed by John Gingles, cosponsored the first project to document historic bridges, tunnels and other road-related resources in the National Park System to HAER standards. Twenty-three historic bridges and two tunnels in the National Capital Region and five bridges and one tunnel along the Colonial Parkway were documented as part of this pilot project.

Several of the rustic bridges in Rock Creek Park in Washington, D. C., including Boulder Bridge, and the brick-arch viaducts on the Colonial Parkway that were designed by HABS founder Charles E. Peterson in the 1930s, were recorded. Plans are to record approximately 200 historic bridges and 30 historic tunnels over the next five years. The roads and bridges of Yellowstone Park are scheduled for documentation in 1989.

Team Members:

- * Joseph P. Meko (supervisor), Historian, University of Maryland
- * Marcia Miller, Historian, Loyola College
- * Elizabeth Nolin, Historian, West Virginia University
- * Mary Shipe, Historian, Mary Washington College

IN THE HABS/HAER OFFICE WASHINGTON OFFICE

Summer 1988 was a banner season for reducing the backlog of HABS/HAER documentation in the Washington office. A total of 332 projects, comprised of 372 drawings, 3,020 photographs, and 506 data pages, and representing summer project, donated, and mitigative documentation, were edited and completed for transmittal to the Library of Congress.

Architecture technicians Brian Pederson, North Dakota State University, and Isabel Yang, University of Maryland, edited and completed the drawings. Historian Robert P. F. Buerglener, Carleton College, edited and completed the historical data.

Mark Holdsworth from the University of Virginia provided technical support to the field teams.

PEOPLE

HABS CHIEF SAYS GOODBYE

Kenneth L. Anderson's career with the National Park Service began on June 12, 1972, as a project supervisor of a Historic American Buildings Survey (HABS) summer recording team in Fort Totten, North Dakota. In August of 1972, he joined the permanent staff of HABS in Washington, D. C., as principal architect, a position he held for thirteen years. For the past three years, he served as Chief of HABS. During his tenure as both principal architect and chief, he directed more recording projects than any other individual in the history of the program. He has managed over five hundred projects, making him responsible for a high percentage of the documentation in the HABS collection in the Library of Congress. Ken initiated a large scale project, utilizing computer-aided drafting--a first in the history of the program. He also conducted a program to meet cultural resource needs of National Park Service regional and park architects through the utilization of the HABS summer recording activity. Additional outreach activities have included lectures, publications and exhibits. He has lectured widely on the HABS program. In doing so, he has influenced a generation of students of architecture and architectural history, and historic preservationists. Literally hundreds of young professionals have started their careers under his direction. As Ken takes on his duties in the Art in Architecture Division of the General Services Administration, he will be greatly missed by the HABS/HAER staff and its constituents. We wish him well.

PAUL GOELDNER

On October 22, 1988, former HABS principal architect, **Paul Goeldner**, died of a brain tumor at the Hospice of Washington. In the summers of 1967 and 1968, Dr. Goeldner worked on HABS projects in the State of Utah. From 1971 to 1973, he served as principal architect in the HABS Washington office. During those years, he authored the HABS Texas and Utah catalogs. From 1973, until he retired earlier this summer due to illness, Dr. Goeldner worked with the National Capital Region of the National Park Service, where his work included the restoration of the Clara Barton House and the Peterson House, where Abraham Lincoln died, just to name a few. He had also arranged commemorative stones at the Washington Monument and designed the Alaska and Hawaii recognition stone at the Lincoln Memorial. He continued to support HABS in this position.

Dr. Goeldner was born in Moravia, Iowa. He graduated from Iowa State University, was a practicing architect in Dallas and, from 1962 to 1971, taught at Texas Tech University in Lubbock. He received his doctorate in architecture from Columbia University in 1970. He was a member of the American Institute of Architects, and a past president of the Latrobe chapter of the Society of Architectural Historians.

In remembrance of the outstanding work performed by Dr. Goeldner for HABS, HABS/HAER is offering copies of the Texas Catalog to all interested parties. If you would like a copy, please write to Robert J. Kapsch, Chief, HABS/HAER, National Park Service, P. O. Box 37127, Washington, D. C. 20013-7127.

New Faces

JOSEPH D. BALACHOWSKI, HABS Architect, from California Polytechnic University
ROBERT BUERGLER, HABS/HAER Historian, from Carleton College
RICHARD HENDERSON, HAER Historian, from Sangamon State University
HUGH D. HUGHES, HABS Architect, from the University of Colorado
SARA AMY LEACH, HABS Historian, from the University of Virginia
ISABEL C. YANG, HAER Architect, from the University of Maryland

People on the Move

FRANCES P. ALEXANDER, HABS/HAER Historian, to Architectural Historian, firm of Engineering and Science, Washington, D. C.

DENISE A. BRADLEY, HAER Historian, to Industrial Historian/Landscape Architect, Onyx Group, Alexandria, Virginia.

ELLEN B. MINNICH, HABS/HAER Collections Management Specialist, on a one-year sabbatical.

JORGE L. SEIN, HABS Architect, to pursue a Masters degree at City University of New York.



Springhouse on the Mumma Farm at the Antietam National Battlefield in Sharpsburg, Maryland. Photographer: Joseph D. Balachowski, 1988.



Bill Richardson, owner of the Mt. Etna Barracks in Etna, Pennsylvania, watches team members Mark Pierson, David Kalhoefer, and Gilbert Witte measure the structure. Photographer: K. Edward Lay, 1988

HABS/HAER STAFF ROSTER

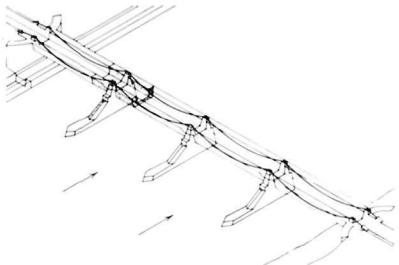
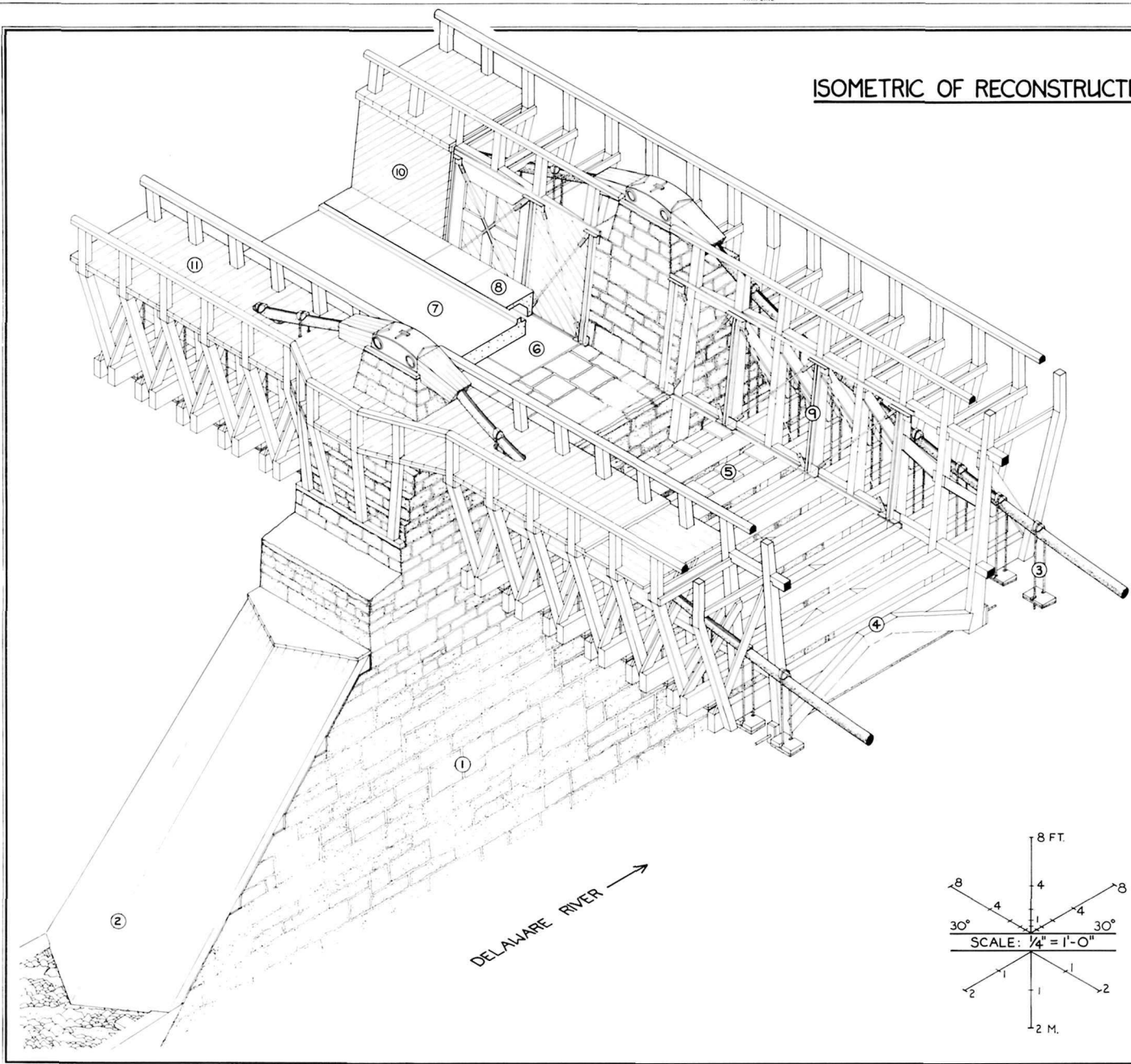
Mailing Address: HABS/HAER Division
National Park Service
P. O. Box 37127
Washington, D. C. 20013-7127

Street Address: Room 6101
1100 L Street, NW
Washington, D. C.

Area Code: (202)

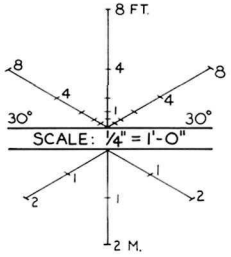
ANDERSON, Richard K., Jr.	HAER Architect	343-9630
BALACHOWSKI, Joseph D.	HABS Architect	343-9633
BERGSTROM, R. Marlene	HABS/HAER Field Program Administrator	343-9600
BOUCHER, Jack E.	HABS Photographer	343-9614
BURNS, John A., A.I.A.	HABS/HAER Principal Architect	343-9602
DAVIS, Judy B.	HABS/HAER Division Secretary	343-9625
DeLONY, Eric N.	Chief, HAER	343-9603
DOLINSKY, Paul D.	HABS Landscape Architect	343-9611
ELLIOTT, Robyn M.	HABS/HAER Clerk-Typist	343-9618
ENGLE, Frederick	HABS/HAER Computer Assistant	343-9598
FITZSIMONS, G. Gray	HAER Historian/Engineer	343-9608
HOAGLAND, Kim	HABS Senior Historian	343-9601
HOMAN, Phyllis V.	HABS/HAER Clerk-Typist	343-9623
HUGHES, Hugh D.	HABS Architect	343-9615
JACKSON, Robbyn L.	HAER Architect	343-9631
KAPSCH, Robert J.	Chief, HABS/HAER	343-9606
LANGE, Robert S.	HAER Historian	343-9610
LAVOIE, Catherine C.	HABS/HAER Historian	343-9609
LEACH, Sara Amy	HABS Architectural Historian	343-9607
LEBOVICH, William W.	HAER Architectural Historian	343-9617
LINDSTROM, Frederick J.	HABS Architect	343-9616
LOWE, John T. "Jet"	HAER Photographer	343-9613
MULROONEY, Margaret M.	HABS Historian	343-9612
TOMPKINS, Sally K.	HABS/HAER Deputy Chief	343-9604
YANG, Isabel C.	HAER Architect	343-9633
YEARBY, Jean P.	HABS/HAER Publications Specialist	343-9628

ISOMETRIC OF RECONSTRUCTED AQUEDUCT AT PIER, 1987



THE ROEBLING BRIDGE WAS EXTREMELY DETERIORATED WHEN PURCHASED BY THE NATIONAL PARK SERVICE (NPS) IN 1980. IN RESPONSE TO ITS MISSION TO INTERPRET HISTORIC PROPERTIES AND BECAUSE OF LOCAL PRESSURE TO REOPEN A NEEDED BRIDGE, NPS DECIDED TO COMBINE RECONSTRUCTION OF THE AQUEDUCT WITH MODERN HIGHWAY ENGINEERING. PHASE I BEGAN WITH RESTORATION OF THE CABLES AND PIERS. THE CABLE WIRES WERE CLEANED, PACKED WITH RED LEAD PASTE, AND REWRAPPED WITH STEEL WIRE. STONES WERE RESTORED TO THE PIERS, AND COVERINGS AND SACRIFICIAL ICEBREAKERS WERE RECONSTRUCTED TO PROTECT THE PIERS FROM THE SCOURING OF ICE. PHASE II BEGAN IN 1986. TO RECONSTRUCT THE AQUEDUCT'S HISTORIC APPEARANCE, THE TIMBER FRAMES WERE COPIED ALMOST DIRECTLY FROM ROEBLING'S DESIGN. TO ACCOMMODATE HIGHWAY TRAFFIC, THIN STEEL TRUSSES WERE BUILT INTO THE CANAL WALLS TO PROVIDE STIFFENING, AND THE DAMPENING EFFECT OF THE CANAL WATER WAS REPLICATED WITH A NEOPRENE AND CONCRETE ROADBED SO THAT THE LIVE LOAD OF TRAFFIC WAS MINIMIZED. THE TOWPATHS AND TRUNK WALLS WILL BE INSTALLED IN 1992 AS PART OF PHASE III. THE BRIDGE REOPENED IN 1987.

- KEY
1. MASONRY PIER
 2. WOODEN ICEBREAKER COVER
 3. HANGER AND PLATE
 4. TIMBER FRAME
 5. NEOPRENE PAD ON STEEL BASE
 6. 3' REINFORCED PRECAST CONCRETE ROADBED PANEL
 7. 12' CAST IN PLACE CONCRETE TOPPING
 8. PRECAST CONCRETE SIDEWALK PANEL WITH CONDUIT
 9. STEEL TRUSS FOR STIFFENING
 10. WOODEN CANAL WALL (PHASE III)
 11. WOODEN TOWPATH (PHASE III)



APPENDIX I

HABS/HAER 1988 TRANSMITTALS

PART A: HABS TRANSMITTALS

HABSCODE	CITY-TOWN	RECORD NAME	NDRW*	NPHO*	DATA*
AK-19	Bettles vic.	Knorr, Vincent, Cabin	0002	0006	0001
AK-20-A	Bettles vic.	Yale, Charlie, Main Cabin	0000	0007	0000
AK-20-B	Bettles vic.	Yale, Charlie, Work Cabin	0000	0003	0000
AK-43	Circle vic.	McGregor, George, Cabin	0002	0004	0006
AK-42	Circle vic.	Slaven, Frank, Roadhouse	0005	0009	0009
AK-42-A	Circle vic.	Slaven, Frank, Roadhouse, Shed	0001	0000	0000
AK-44	Circle vic.	Woodchopper Roadhouse	0002	0003	0008
AK-46	Cold Bay	Fort Randall	0000	0000	0001
AK-46-B	Cold Bay	Fort Randall, Latrine & Bath	0000	0001	0002
AK-46-A	Cold Bay	Fort Randall, Neuro-Psychiatric Ward	0000	0008	0002
AK-46-C	Cold Bay	Fort Randall, Theater	0000	0001	0002
AK-7-H	Eagle	Amundsen Cabin	0000	0001	0001
AK-7-I	Eagle	Church & Parish House	0000	0004	0001
AK-7-G	Eagle	City Hall	0000	0005	0001
AK-7-E	Eagle	Courthouse	0000	0005	0001
AK-7-C	Eagle	Custom House	0000	0005	0001
AK-7-B	Eagle	Northern Commercial Company Store	0000	0006	0001
AK-7-A	Eagle	Northern Commercial Company Warehouse	0000	0006	0001
AK-7-D	Eagle	Taylor Building	0000	0002	0001
AK-7-F	Eagle	Wellhouse	0000	0005	0001
AK-40	Eagle vic.	Biederman, Ed, Fish Camp	0001	0000	0005
AK-40-E	Eagle vic.	Biederman, Ed, Fish Camp, Boat	0000	0002	0000
AK-40-B	Eagle vic.	Biederman, Ed, Fish Camp, Bunkhouse	0001	0003	0000
AK-40-C	Eagle vic.	Biederman, Ed, Fish Camp, Cache	0001	0002	0000
AK-40-D	Eagle vic.	Biederman, Ed, Fish Camp, Greenhouse	0000	0001	0000
AK-7-C	Eagle vic.	Custom House	0000	0000	0000
AK-14	Eagle vic.	Fort Egbert	0000	0000	0001
AK-14-C	Eagle vic.	Fort Egbert, Granary	0000	0003	0001
AK-14-A	Eagle vic.	Fort Egbert, Mule Barn	0000	0010	0001
AK-14-E	Eagle vic.	Fort Egbert, Quartermaster Warehouse	0000	0002	0001
AK-14-D	Eagle vic.	Fort Egbert, Waterwagon Shed	0000	0003	0001
AK-14-B	Eagle vic.	Fort Egbert, Noncommissioned Officers Qtr.	0000	0009	0001
AK-41	Eagle vic.	Taylor, James, Cabin	0001	0000	0008
AK-41-B	Eagle vic.	Taylor, James, Cabin, Dog Barn	0001	0004	0000
AK-41-C	Eagle vic.	Taylor, James, Cabin, Dog Corrals	0000	0001	0000
AK-41-A	Eagle vic.	Taylor, James, Cabin, Shed	0001	0003	0000
AK-41-D	Eagle vic.	Taylor, James, Cabin, Shop	0001	0003	0000
AK-39-D	Kenai	Holy Assumption Russian Orth Church, Chapel	0003	0000	0000
AK-39-C	Kenai	Holy Assumption Russian Orth Church, Rect.	0002	0000	0000
AK-39-A	Kenai	Holy Assumption Russian Orthodox Church	0005	0000	0000
AK-39	Kenai	Holy Assumption Russian Orthodox Church	0001	0000	0000
AK-47-B	Kodiak	Kodiak Naval Operating Base, Aircraft Eng.	0000	0004	0002
AK-48-B	Kodiak	U.S. Coast Guard Station, Crash Boat House	0000	0002	0002
AK-48-A	Kodiak	U.S. Coast Guard Station, Weapons Shop Bld	0000	0002	0001
AK-13	Kotzebue vic.	Shelter Cabin No. 1	0001	0000	0000
AK-35	McKinley Station	Mount McKinley Headquarters	0000	0001	0002
AK-35-C	McKinley Station	Mount McKinley Hqtrs, Administration Bldg.	0003	0003	0001
AK-35-J	McKinley Station	Mount McKinley Hqtrs, Barn	0002	0002	0001
AK-35-K	McKinley Station	Mount McKinley Hqtrs, Boiler House	0002	0001	0001
AK-35-N	McKinley Station	Mount McKinley Hqtrs, Comfort Station	0001	0001	0001
AK-35-I	McKinley Station	Mount McKinley Hqtrs, Dog Feed Cache & Sl	0003	0005	0001
AK-35-L	McKinley Station	Mount McKinley Hqtrs, Electric Light Plant	0001	0003	0001
AK-35-A	McKinley Station	Mount McKinley Hqtrs, Employee Residence	0002	0001	0001

* NDRW = Number of sheets of drawings

* NPHO = Number of large format photographs

* DATA = Number of data pages

Appendix I

HABSCODE	CITY-TOWN	RECORD NAME	NDRW	NPHO	DATA
AK-35-B	McKinley Station	Mount McKinley Hqtrs, Employee Residence	0003	0001	0001
AK-35-D	McKinley Station	Mount McKinley Hqtrs, Employee Residence	0002	0002	0001
AK-35-M	McKinley Station	Mount McKinley Hqtrs, Employee Residence	0001	0001	0001
AK-35-G	McKinley Station	Mount McKinley Hqtrs, Garage & Repair Shop	0002	0001	0001
AK-35-H	McKinley Station	Mount McKinley Hqtrs, Ranger Cache & Garage	0002	0002	0001
AK-35-E	McKinley Station	Mount McKinley Hqtrs, Superintendent's Res.	0003	0003	0001
AK-35-F	McKinley Station	Mount McKinley Hqtrs, Warehouse	0002	0003	0001
AK-32	McKinley Station	Mount McKinley Patrol Cabins	0000	0000	0001
AK-32-A	McKinley Station	Mount McKinley Patrol, Igloo Creek Cabin	0000	0003	0001
AK-32-B	McKinley Station	Mount McKinley Patrol, Upper East Fort C	0000	0001	0001
AK-33	McKinley Station	Pearson Cabin	0003	0009	0001
AK-31	McKinley Station	Wonder Lake Ranger Station	0002	0005	0001
AK-37-B	Unalaska	Holy Ascension Russian Orth Church, Bishop	0000	0001	0001
AK-37-A	Unalaska	Holy Ascension Russian Orthodox Church	0000	0002	0001
AR-35	Clarendon	Monroe County Jail, Old	0008	0000	0000
AR-37	Johnson	Johnson Mill	0010	0000	0000
AR-36	Little Rock	Curran Hall	0009	0000	0000
AR-38	Osage vic.	Chaney Log House	0007	0000	0000
CA-2158-B	Los Angeles	LA Union Passenger Terminal, Mail Bag Ex	0000	0054	0003
CA-2158-D	Los Angeles	LA Union Passenger Terminal, Maintenance	0000	0003	0000
CA-2158-C	Los Angeles	LA Union Passenger Terminal, Parking Lot	0000	0012	0000
CA-1937	Los Angeles	Los Angeles Public Library	0011	0021	0008
CA-2158-A	Los Angeles	Los Angeles Union Passenger Terminal, Tra	0000	0010	0000
CA-2243	Mendocino	Bank of Commerce	0000	0003	0001
CA-2237	Mendocino	Denslow-Maxwell House	0000	0003	0001
CA-2232	Mendocino	Ford House	0000	0002	0001
CA-2231	Mendocino	Fraga House, Water Tower	0000	0002	0001
CA-2239	Mendocino	Golgert House	0000	0002	0001
CA-2233	Mendocino	Gorden, Henry, House	0000	0002	0001
CA-2230	Mendocino	Grindle, Joshua, House	0000	0003	0003
CA-2234	Mendocino	Hills, Spencer, House	0000	0003	0003
CA-2245	Mendocino	Jarvis-Nichols Building	0000	0003	0001
CA-2235	Mendocino	Joss House	0000	0002	0001
CA-2247	Mendocino	Kelley House	0000	0003	0001
CA-2248	Mendocino	Kelley Rental Building	0000	0002	0001
CA-2236	Mendocino	Lansing House & Water Tower	0000	0004	0001
CA-2246	Mendocino	Lemos' Saloon	0000	0003	0001
CA-2242	Mendocino	Lisbon-Paoli Hotel	0000	0002	0001
CA-2238	Mendocino	MacCallum House	0000	0002	0001
CA-2229	Mendocino	Mendocino Presbyterian Church	0000	0002	0001
CA-2244	Mendocino	Odd Fellows Hall	0000	0002	0001
CA-41	Point Loma	Point Loma Lighthouse No. 355	0009	0014	0013
CA-2250	Point Reyes	Point Reyes Lighthouse	0005	0010	0000
CA-1709	Sacramento	Stanford, Leland, House	0009	0017	0019
CA-1548	San Diego	U.S. Naval Hospital	0006	0083	0078
CA-1548-A	San Diego	U.S. Naval Hospital, Administration Bldg.	0000	0027	0009
CA-1548-N	San Diego	U.S. Naval Hospital, Contagious Ward	0000	0025	0002
CA-1548-O	San Diego	U.S. Naval Hospital, Corps Barracks	0000	0025	0003
CA-1548-S	San Diego	U.S. Naval Hospital, Double Quarters	0000	0015	0002
CA-1548-Q	San Diego	U.S. Naval Hospital, Executive Officer's	0000	0013	0007
CA-1548-T	San Diego	U.S. Naval Hospital, Gate House	0000	0006	0002
CA-1548-L	San Diego	U.S. Naval Hospital, Guinea Pig & Rabbit	0000	0003	0001
CA-1548-M	San Diego	U.S. Naval Hospital, Incinerator Building	0000	0008	0002
CA-1548-J	San Diego	U.S. Naval Hospital, Laboratory & Outpati.	0000	0013	0003
CA-1548-V	San Diego	U.S. Naval Hospital, Medical Storehouse	0000	0005	0003
CA-1548-X	San Diego	U.S. Naval Hospital, North Crosswalk	0000	0002	0003
CA-1548-K	San Diego	U.S. Naval Hospital, North Ward	0000	0015	0003

Appendix I

HABSCODE	CITY-TOWN	RECORD NAME	NDRW	NPHO	DATA
CA-1548-C	San Diego	U.S. Naval Hospital, Operating Building	0000	0005	0003
CA-1548-F	San Diego	U.S. Naval Hospital, Power House	0000	0005	0002
CA-1548-I	San Diego	U.S. Naval Hospital, Service Building	0000	0015	0003
CA-1548-W	San Diego	U.S. Naval Hospital, Sick Officers & Outpa	0000	0004	0002
CA-1548-P	San Diego	U.S. Naval Hospital, Sick Officers Qtrs.	0000	0009	0002
CA-1548-U	San Diego	U.S. Naval Hospital, South Ward	0000	0010	0002
CA-1548-D	San Diego	U.S. Naval Hospital, Subsistence Building	0000	0014	0003
CA-1548-R	San Diego	U.S. Naval Hospital, Surgeon's Qtrs.	0000	0010	0002
CA-1548-B	San Diego	U.S. Naval Hospital, Ward A	0000	0013	0003
CA-1548-E	San Diego	U.S. Naval Hospital, Ward B	0000	0013	0003
CA-1548-G	San Diego	U.S. Naval Hospital, Ward C	0000	0017	0002
CA-1548-H	San Diego	U.S. Naval Hospital, Ward D	0000	0011	0003
CA-1792-J	San Francisco	Alcatraz Island, Military Chapel	0000	0005	0000
CA-1792-F	San Francisco	Alcatraz Island, Power Plant	0000	0003	0000
CA-1792-E	San Francisco	Alcatraz Island, Warehouse/Bakery	0000	0007	0000
CA-1792-G	San Francisco	Alcatraz, Building 64	0000	0004	0000
CA-1792	San Francisco	Alcatraz, Cell House	0000	0029	0000
CA-1792-H	San Francisco	Alcatraz, China Alley	0000	0003	0000
CA-1792-C	San Francisco	Alcatraz, Industries Building	0000	0004	0000
CA-1792-D	San Francisco	Alcatraz, Laundry Building	0000	0007	0000
CA-1792-L	San Francisco	Alcatraz, Officer's Club	0000	0004	0000
CA-1792-K	San Francisco	Alcatraz, Sally Port	0000	0005	0000
CA-1792-B	San Francisco	Alcatraz, Warden's House	0000	0007	0000
CA-2259	Santa Barbara	326 West Ortega Street (House)	0000	0001	0001
CA-2258	Santa Barbara	710 Anacapa Street (House)	0000	0001	0001
CA-2212	Santa Barbara	Hayman, Albert, Cottage	0000	0006	0002
CA-2213	Santa Barbara	Larco Building	0000	0011	0005
CA-2215	Santa Barbara	Wood, V. E., Auto Building	0000	0015	0005
CA-2211	Santa Barbara	Young, T. J., Cottage	0000	0006	0002
CA-1805	Wawona	Wawona Hotel Complex	0000	0006	0029
CA-1805-G	Wawona	Wawona Hotel Complex, Annex Building	0004	0005	0000
CA-1805-B	Wawona	Wawona Hotel Complex, Hotel	0010	0010	0000
CA-1805-E	Wawona	Wawona Hotel Complex, Little Brown	0005	0003	0000
CA-1805-C	Wawona	Wawona Hotel Complex, Little White	0001	0002	0000
CA-1805-F	Wawona	Wawona Hotel Complex, Long Brown	0007	0002	0000
CA-1805-A	Wawona	Wawona Hotel Complex, Long White	0006	0002	0000
CA-1805-D	Wawona	Wawona Hotel Complex, Thomas Hill Studio	0005	0003	0000
CO-61	Aspen	Aspen Lumber Company Building	0000	0012	0004
CO-81	Idaho Springs v.	Mount Evans Crest House	0000	0016	0014
DC-553	Washington	119 Sixth Street, N.E. (House)	0001	0000	0000
DC-551	Washington	16 Fifth Street, N.E. (House)	0001	0000	0000
DC-558	Washington	1800 Connecticut Avenue, N.W. (House)	0000	0001	0001
DC-560	Washington	2101 Connecticut Avenue (Apartment Bldg.)	0000	0001	0001
DC-555	Washington	224 A Street, N.E. (House)	0001	0000	0000
DC-561	Washington	2929 Connecticut Avenue (Apartment Bldg.)	0000	0001	0001
DC-563	Washington	4701 Connecticut Avenue (Apartment Bldg.)	0000	0002	0001
DC-564	Washington	4801 Connecticut Avenue (Apartment Bldg.)	0000	0001	0001
DC-554	Washington	515 E. Capitol Street, S.E. (House)	0001	0000	0000
DC-552	Washington	619 E. Capitol Street, S.E. (House)	0001	0000	0000
DC-556	Washington	Broadmoor, The, Apartment Building	0000	0002	0001
DC-550	Washington	Capitol Hill Historic District	0001	0000	0000
DC-557	Washington	Carthage, The, Apartment Building	0000	0001	0001
DC-562	Washington	Chesapeake, The, Apartment Building	0000	0001	0001
DC-565	Washington	Dresden, The, Apartment Building	0000	0001	0001
DC-500	Washington	Federal Triangle Building	0000	0002	0002
DC-567	Washington	Hub Furniture Store	0000	0001	0001

Appendix I

HABSCODE	CITY-TOWN	RECORD NAME	NDRW	NPHO	DATA
DC-502	Washington	Ingleside	0000	0010	0009
DC-566	Washington	Kennedy-Warren, The, Apartment Building	0000	0001	0001
DC-532	Washington	Meridian Hill Park	0025	0051	0068
DC-76	Washington	Pension Building	0001	0053	0000
DC-568	Washington	Polkinhorn Building	0000	0002	0001
DC-525-A	Washington	Saunders, Capt. Henry, House: Virginia Room	0004	0000	0000
DC-141	Washington	Smithsonian Institution Building	0027	0127	0006
DC-559	Washington	Warren, Bates, Apartment Building	0000	0001	0001
DC-37	Washington	White House, The	0000	0050	0001
DE-221-D	Armstrong Corner	Achmester, Smokehouse	0003	0000	0001
DE-245-A	Dover	Pratt Smokehouse	0004	0000	0001
DE-189-B	Middletown vic.	Hedgelawn, Smokehouse	0004	0000	0001
DE-243-A	Newark	Granite Mansion Smokehouse	0003	0000	0001
DE-90-A	Odessa	Corbit-Sharp Smokehouse	0002	0000	0001
DE-247	Odessa vic.	Cleaver, Ike, Muskrat Shed	0006	0000	0001
DE-233	Wilmington	228 French Street (House)	0000	0001	0003
DE-45	Wilmington vic.	Richardson, John, House	0000	0015	0002
FL-280	Fernandina Beach	Fernandina Depot, Old	0006	0000	0008
FL-278	Fernandina Beach	First Presbyterian Church	0005	0000	0007
FL-279	Fernandina Beach	Lewis, C.W., House	0006	0000	0013
FL-358	Fernandina Beach	Nassau County Courthouse	0000	0023	0005
FL-281	Fernandina Beach	St. Peter's Parish (Episcopal Church)	0006	0000	0024
FL-368	Gainesville	Masonic Temple, Lodge F.&A.M. No. 41	0016	0000	0000
FL-369	Island Grove	Crosby House	0008	0000	0000
FL-350	Jacksonville	Ahaveth Chesed Synagogue	0004	0000	0006
FL-342	Jacksonville	Daniel, Dr. Richard P., House	0005	0000	0009
FL-343-A	Jacksonville	Doty, Clarence T., Carriage House	0001	0000	0000
FL-343	Jacksonville	Doty, Clarence T., Residence	0005	0000	0008
FL-346-C	Jacksonville	Lavilla Boarding House, 836 Houston St.	0000	0000	0011
FL-346-A	Jacksonville	Lavilla Boarding House, New York Inn	0000	0000	0010
FL-346-B	Jacksonville	Lavilla Boarding House, Turkish Harem	0000	0000	0012
LF-346	Jacksonville	Lavilla Boarding Houses	0003	0000	0000
FL-352	Jacksonville	St. Andrew's Parish Episcopal Church	0000	0000	0007
FL-365	Key Biscayne	Princeton Railroad Station	0005	0000	0000
FL-17	St. Augustine	Castillo de San Marcos	0020	0040	0001
FL-140	St. Augustine	Tovar, Don Joseph, House	0017	0003	0006
GA-2169-C	Atlanta	King, Martin Luther Jr., Nat'l Hist. Site	0006	0000	0000
GA-2169-A	Atlanta	King, Martin Luther Jr., Nat'l Hist. Site	0013	0000	0000
GA-2169-F	Atlanta	King, Martin Luther Jr., Nat'l Hist. Site	0014	0002	0000
GA-2169-B	Atlanta	King, Martin Luther Jr., Nat'l Hist. Site	0007	0000	0000
GA-2169-E	Atlanta	King, Martin Luther Jr., Nat'l Hist. Site	0007	0000	0000
GA-2169-D	Atlanta	King, Martin Luther Jr., Nat'l Hist. Site	0004	0000	0000
GA-2181	Augusta	Campbell Building	0000	0015	0005
HI-58	Hanalei	Mahamoku	0006	0000	0000
HI-59-A	Hanamaulu	Lihue Plantation Home One	0001	0000	0000
HI-59-B	Hanamaulu	Lihue Plantation Home Two	0002	0000	0000
HI-59	Hanamaulu	Lihue Plantation House	0001	0000	0000
HI-34	Honolulu	Melcher's Building	0000	0001	0008
HI-55-H	Honolulu	Merchant & Nuuanu Streets, Bishop Estate	0000	0000	0007
HI-55-K	Honolulu	Merchant & Nuuanu Streets, Honolulu Police	0000	0000	0009
HI-55-M	Honolulu	Merchant & Nuuanu Streets, Irwin Block	0000	0000	0007
HI-55-C	Honolulu	Merchant & Nuuanu Streets, J. T. Warehouse	0000	0000	0007
HI-55-G	Honolulu	Merchant & Nuuanu Streets, Judd Building	0000	0000	0009
HI-55-B	Honolulu	Merchant & Nuuanu Streets, Royal Saloon	0000	0000	0008
HI-55-F	Honolulu	Merchant & Nuuanu Streets, Strangenwald B.	0000	0000	0006
HI-55-L	Honolulu	Merchant & Nuuanu Streets, T. R. Foster Bld	0000	0000	0006

Appendix I

HABSCODE	CITY-TOWN	RECORD NAME	NDRW	NPHO	DATA
HI-55-A	Honolulu	Merchant & Nuuanu Streets, Wing Wo Tai &	0000	0000	0008
HI-55	Honolulu	Merchant & Nuuanu Streets, Commercial Bldgs	0014	0000	0008
HI-55-I	Honolulu	Merchant & Nuuanu Streets, Bank of Bishop &	0000	0000	0009
HI-55-D	Honolulu	Merchant & Nuuanu Streets, Yokohama Specie	0000	0000	0011
HI-56	Lihue	Grove Farm, G.M. Wilcox House	0005	0033	0000
ID-67	Heise vic.	Heise Ranger Station Office	0000	0012	0004
IL-185	Belvidere	Palmer House	0000	0008	0000
IL-169-X	Bishop Hill	Jansonist Colony, Bandstand	0000	0001	0000
IL-169-K	Bishop Hill	Jansonist Colony, Colony Store & Post Off.	0001	0006	0000
IL-169-N	Bishop Hill	Jansonist Colony, Steeple Building	0006	0017	0004
IL-169-W	Bishop Hill	Jansonist Colony, Swanson House	0000	0002	0000
IL-169-Y	Bishop Hill	Jansonist Colony, Grain Elevator	0000	0001	0000
IL-1148	Mt. Carroll	Main & Market Streets (Structures)	0015	0000	0000
IL-1149	Oak Park	Oak Park Theatre	0000	0005	0002
IL-1133	Penfield	Penfield Elevators	0001	0000	0000
IL-1133-B	Penfield	Penfield Elevators, East Elevator	0008	0000	0000
IL-1133-A	Penfield	Penfield Elevators, West Penfield	0004	0000	0000
IL-1123-L	Springfield	Lincoln Home Site, Aitkin Barn	0001	0000	0000
IL-1123-A	Springfield	Lincoln Home Site, Arnold House	0003	0000	0000
IL-1123-H	Springfield	Lincoln Home Site, Beedle House	0004	0000	0000
IL-1123-K	Springfield	Lincoln Home Site, Chronology Drawings: 18	0006	0000	0000
IL-1123-E	Springfield	Lincoln Home Site, Dean House	0004	0000	0000
IL-1123-C	Springfield	Lincoln Home Site, DuBois House	0004	0000	0000
IL-1123-I	Springfield	Lincoln Home Site, Lyon House	0003	0000	0000
IL-1123-B	Springfield	Lincoln Home Site, Miller House	0004	0000	0000
IL-1123-J	Springfield	Lincoln Home Site, S. Eighth St. (Houses)	0012	0000	0000
IL-1123-F	Springfield	Lincoln Home Site, Shutt House	0005	0000	0000
IL-1123	Springfield	Lincoln Home Site, Site Plan	0001	0000	0000
IL-1123-D	Springfield	Lincoln Home Site, Sprigg House	0004	0000	0000
IL-1123-G	Springfield	Lincoln Home Site, Stuve Carriage House	0003	0000	0000
IL-1134	White Heath vic.	Caldwell Elevator	0009	0000	0000
IN-205	Elkhart	105 South Main Street (Commercial Building)	0000	0003	0005
IN-206	Elkhart	107 South Main Street (Commercial Building)	0000	0004	0004
IN-207	Elkhart	111 West Jackson Street (Commercial Bldg.)	0000	0004	0004
IN-208	Elkhart	113-115 West Jackson St. (Commercial Bldg.)	0000	0006	0008
KS-49-I	Nicodemus	A.M.E. Church	0000	0005	0006
KS-49-A	Nicodemus	Dabney, Carrie, House	0000	0006	0000
KS-49-O	Nicodemus	District No. 1 School	0003	0005	0002
KS-49-Y	Nicodemus	Edwards, John, House	0000	0006	0000
KS-49-C	Nicodemus	Fairview School	0000	0003	0002
KS-49-K	Nicodemus	First Baptist Church, Old	0009	0007	0006
KS-49-L	Nicodemus	First Baptist Church Parsonage	0000	0005	0002
KS-49-G	Nicodemus	Fletcher-Switzer House	0000	0005	0000
KS-49-Q	Nicodemus	Lacey, Tim, House (Ruin)	0000	0003	0002
KS-49-V	Nicodemus	Mount Olive Church	0000	0006	0000
KS-49-W	Nicodemus	Mount Olive School	0000	0004	0000
KS-49	Nicodemus	Nicodemus Historic District	0005	0010	0002
KS-49-B	Nicodemus	Nicodemus Township Hall	0000	0006	0002
KS-49-P	Nicodemus	Sayers, Calvin, House	0000	0007	0000
KS-49-D	Nicodemus	Scruggs, Jerry, House	0000	0004	0002
KS-49-X	Nicodemus	Scruggs, Jerry, House	0000	0003	0000
KS-49-N	Nicodemus	Stewart, Dr., House	0000	0005	0000
KS-49-F	Nicodemus	Switzer Bunkhouse	0000	0003	0000
KS-49-S	Nicodemus	Vanduvall, Alexander G., House	0000	0004	0000
KS-49-R	Nicodemus	Vaughn, Clementine, House	0000	0004	0002
KS-49-E	Nicodemus	Wellington, Lloyd, House	0000	0004	0002
KS-49-J	Nicodemus	Williams, Ace, House	0000	0002	0000

Appendix I

HABSCODE	CITY-TOWN	RECORD NAME	NDRW	NPHO	DATA
KS-49-M	Nicodemus	Williams, Charles, House	0000	0004	0002
KS-49-U	Nicodemus	Williams, Emma, House	0000	0002	0000
KS-49-T	Nicodemus	Williams, Henry, House	0000	0008	0000
KS-49-H	Nicodemus	Wilson's Joe, Post Office	0000	0002	0002
KY-173	Berea	Berea College, Lincoln Hall	0000	0005	0002
KY-164	Covington	Beard, Daniel Carter, House	0000	0019	0001
KY-207	Danville	Jacobs Hall, Kentucky School for the Deaf	0000	0004	0001
KY-33	Danville	McDowell, Dr. Ephraim, House	0000	0014	0000
KY-20-1	Frankfort	State House, Old	0023	0019	0004
KY-61	Lexington	Morrison College, Transylvania University	0000	0005	0002
KY-172	Lexington vic.	Ashland	0000	0008	0000
KY-172-A	Lexington vic.	Ashland, Gardener's Cottage	0000	0001	0000
KY-172-D	Lexington vic.	Ashland, Ice Houses	0000	0001	0000
KY-172-C	Lexington vic.	Ashland, Privy & Wash House	0000	0001	0000
KY-172-B	Lexington vic.	Ashland, Smokehouse	0000	0001	0000
KY-20-3	Louisville	Bank of Louisville Building	0004	0009	0002
KY-210	Louisville	Churchill Downs	0000	0007	0000
KY-69	Louisville	Taylor, Zachary, House	0000	0018	0006
KY-66	Louisville vic.	Croghan House	0000	0009	0000
KY-20-12	Pleasant Hill	Shaker Centre Family Dwelling House	0009	0031	0002
KY-77	Pleasant Hill	Shaker Centre Family Dwelling House (First)	0000	0013	0000
KY-81	Pleasant Hill	Shaker Centre Family Trustees' Office	0000	0023	0000
KY-83	Pleasant Hill	Shaker Coopers' Shop	0000	0008	0000
KY-82	Pleasant Hill	Shaker East Family Brethrens' Shop	0000	0011	0000
KY-212	Pleasant Hill	Shaker East Family Dwelling House	0000	0003	0000
KY-89	Pleasant Hill	Shaker East Family Sisters' Shop	0000	0009	0000
KY-88	Pleasant Hill	Shaker East Family Wash House	0000	0007	0000
KY-78	Pleasant Hill	Shaker Meetinghouse	0000	0011	0000
KY-113	Pleasant Hill	Shaker Ministry Shop, First	0000	0005	0000
KY-114	Pleasant Hill	Shaker Ministry's Shop (Second)	0000	0004	0000
LY-169	Pleasant Hill	Shaker North Family Dwelling House	0000	0006	0000
KY-84	Pleasant Hill	Shaker Water Tower Building	0005	0004	0000
KY-90	Pleasant Hill	Shaker West Family Dwelling House (First)	0000	0009	0000
KY-91	Pleasant Hill	Shaker West Family Dwelling House (Second)	0000	0014	0000
KY-80	Pleasant Hill	Shaker West Family Sisters' Shop	0000	0006	0000
KY-116	Pleasant Hill	Shaker West Family Washhouse	0000	0003	0000
KY-213	Pleasant Hill	Shaker Post Office	0000	0001	0000
KY-211	Sampsonville	Young, Whitney M., Jr., Birthplace	0000	0003	0000
MA-1146-A	Concord	Buttrick, Maj. John, Carriage House	0000	0002	0000
MA-1146	Concord	Buttrick, Maj. John, House	0003	0010	0000
MA-792	Concord	Taylor, Daniel, House	0010	0006	0000
MA-2-69	Ipswich	Choate Bridge	0001	0007	0001
MA-1150	Lexington	Hargrove Barn	0001	0004	0000
MA-828	Lincoln	Hartwell, Sergeant Samuel, House	0007	0009	0003
MA-831	Lincoln	Nelson, John, Barn	0003	0010	0000
MA-833	Lincoln	Smith, Captain William, House	0008	0009	0000
MD-245	Annapolis	Maryland State House	0048	0101	0002
MD-233	Baltimore	Public School No. 74	0000	0005	0008
MD-965	Bon Air Heights	Bonfield's Service Station	0000	0006	0005
MD-967	Dickerson	Mount Ephraim	0000	0008	0020
MD-967-A	Dickerson	Mount Ephraim, Outbuilding	0000	0002	0000
MD-936	Sharpsburg	Antietam National Cemetery	0001	0000	0000
MD-936-B	Sharpsburg	Antietam National Cemetery, Entrance Gate	0002	0000	0000
MD-936-A	Sharpsburg	Antietam National Cemetery, Lodge House	0008	0000	0000
MD-935-A	Sharpsburg	Sherrick, Joseph, Farm, House	0007	0000	0000
MD-937	Sharpsburg vic.	Burnside Bridge	0003	0000	0000

Appendix 1

HABSCODE	CITY-TOWN	RECORD NAME	NDRW	NPHG	DATA
MD-864-A	Sharpsburg vic.	Pry, Philip, Farm, Barn	0009	0000	0000
MD-864-B	Sharpsburg vic.	Pry, Philip, Farm, Outbuildings	0001	0000	0000
MD-864	Sharpsburg vic.	Pry, Philip, House	0002	0000	0000
MD-935-C	Sharpsburg vic.	Sherrick House, Corn Crib	0001	0000	0000
MD-935-B	Sharpsburg vic.	Sherrick House, Summer Kitchen	0001	0000	0000
MD-935	Sharpsburg vic.	Sherrick, Joseph, Farm	0003	0000	0000
MD-933	Westminster	Westminster Rescue Mission	0000	0004	0003
ME-88	Camden	Cushing, Capt., House	0000	0003	0003
ME-105	Thomaston	North Parish Meetinghouse	0000	0005	0005
MI-274	Detroit	Basso Building	0000	0018	0014
MI-261	Detroit	Metropolitan Building	0000	0021	0014
MI-252	Detroit	Olympia Arena	0000	0016	0012
MI-237	Lansing	Hermann House	0010	0000	0000
MN-89	Cokato	Bull, Henry C., House	0000	0008	0004
MN-66	Wabasha	First Congregational Parsonage	0000	0007	0005
MN-71	Wabasha	Livery Stable	0000	0010	0004
MN-72	Wabasha	McKenzie, Duncan, Livery Stable	0000	0006	0004
MN-70	Wabasha	Repogle House	0000	0007	0005
MO-1866	Hannibal	Rockcliffe Mansion	0000	0023	0000
MO-1867	Hannibal	Schaffer's Smoke House	0000	0005	0000
MO-1527	Hannibal	Thatcher, Becky, House	0000	0003	0001
MO-1526	Hannibal	Twain, Mark, House	0000	0011	0001
MO-1871	Hannibal vic.	Garth, John, House	0000	0013	0003
MO-1865	Hannibal vic.	Masterson, Robert, House	0000	0020	0004
MO-1862	Independence	Corrigan, Bernard, House	0000	0015	0005
MO-1861	Independence	Vaile, Harvey M., Mansion	0000	0014	0002
MO-1841	Jefferson City	Governor's Mansion	0000	0012	0003
MO-1840	Jefferson City	Missouri State Capitol	0000	0014	0004
MO-1863	Kansas City	Long, R. A. House	0000	0014	0002
MO-1864	Kansas City	Mineral Hall	0000	0014	0004
MO-1305	Rocheport	Rocheport Baptist Church	0000	0002	0001
MO-1842	St. Joseph	Architect's Folly	0000	0002	0001
MO-1859	St. Joseph	Brittain-Richardson & Co. Building	0000	0003	0001
MO-1844	St. Joseph	Buchanan County Courthouse	0000	0006	0001
MO-1857	St. Joseph	Englehart-Winning & Co. Building	0000	0002	0001
MO-1858	St. Joseph	Englehart-Winning & Co. Building	0000	0002	0001
MO-1845	St. Joseph	German American Bank	0000	0006	0003
MO-1846	St. Joseph	James, Jesse, House	0000	0001	0001
MO-1856	St. Joseph	McDonald, R. L., & Co. Building	0000	0004	0001
MO-1847	St. Joseph	Missouri Theater Building	0000	0010	0003
MO-1848	St. Joseph	Missouri Valley Trust Company	0000	0014	0003
MO-1843	St. Joseph	Motter, Joshua, House	0000	0006	0001
MO-1849	St. Joseph	Ogden House	0000	0007	0001
MO-1850	St. Joseph	Patee House Hotel	0000	0006	0002
MO-1851	St. Joseph	Pony Express Stables	0000	0003	0001
MO-1852	St. Joseph	Robidoux Row	0000	0004	0001
MO-1853	St. Joseph	Schuster, Adam N., House	0000	0019	0001
MO-1860	St. Joseph	South Third & Charles Streets (Commercial)	0000	0003	0000
MO-1855	St. Joseph	Tootle House	0000	0005	0001
MO-1854	St. Joseph	Tootle-Lemon & Company Bankers	0000	0003	0001
MO-1637-C	St. Louis	Bellefontaine Cemetery, Adolphus & Uly B	0000	0003	0000
MO-1637-A	St. Louis	Bellefontaine Cemetery, Wainwright Tomb	0000	0009	0001
MO-1833	St. Louis	Cupples, Samuel, House	0000	0017	0002
MO-1837	St. Louis	Edison Brothers Bldg., Trompe L'Oeil Mura	0000	0001	0002
MO-1834	St. Louis	Neighborhood Gardens	0000	0008	0005
MO-1671	St. Louis	North Grand Water Tower	0000	0003	0000

Appendix i

HABSCODE	CITY-TOWN	RECORD NAME	NDRW	NPHO	DATA
MO-1831	St. Louis	Peper Building	0000	0003	0001
MO-1835	St. Louis	Public Library of St. Louis	0000	0004	0001
MO-1832	St. Louis	Reservoir Park, Compton Hill Water Tower	0000	0003	0002
MO-265	St. Louis	St. Louis City Hall	0000	0014	0021
MO-1670	St. Louis	St. Louis Union Station	0000	0016	0001
MO-1140	St. Louis	Wainwright Building	0000	0045	0007
MO-274	St. Louis	Washington Terrace	0000	0033	0000
MO-1192	St. Louis	Water Tower, Red	0000	0006	0001
MO-1113	Ste. Genevieve	Amoureux House	0010	0021	0002
MO-1121	Ste. Genevieve	Beauvais, Joseph V., House	0002	0012	0001
MO-1114	Ste. Genevieve	Bequet-Ribault House	0006	0017	0002
MO-1105	Ste. Genevieve	Bolduc House, The	0013	0035	0002
MO-1283	Ste. Genevieve	DeLuziere, Pierre Delassus, House	0000	0013	0000
MO-1109	Ste. Genevieve	Guibourd, Jacques Debreuil, House	0000	0028	0002
MO-1104	Ste. Genevieve	Janis, Nicolas, House	0000	0019	0002
MO-1838	Ste. Genevieve	La Haye House	0000	0003	0000
MO-1281	Ste. Genevieve	LaSource-Durand House	0000	0006	0000
MO-1122	Ste. Genevieve	Millard, Josiah, House	0000	0016	0001
MO-1107	Ste. Genevieve	Price, John, House	0000	0005	0001
MO-31-12	Ste. Genevieve	Second & Gabourie Streets (Old Stone House)	0002	0006	0001
MO-1282	Ste. Genevieve	Seraphin, Joseph, House	0000	0003	0000
MO-1118	Ste. Genevieve	Ste. Genevieve Academy	0000	0006	0002
MO-31-11	Ste. Genevieve	Valle, Felix & Odile Pratt, House	0007	0016	0001
MO-31-11-A	Ste. Genevieve	Valle, Felix & Odile Pratt, Slave Quarters	0000	0002	0000
MO-31-10	Ste. Genevieve	Valle, Jean Baptiste, House	0002	0025	0001
MO-1285	Ste. Genevieve	Valle, Jean Baptiste, House	0000	0008	0000
MO-1284	Ste. Genevieve	Vital-St. Genne Beauvais II House	0000	0002	0000
MT-71	Hardin	Hardin City Water Works	0000	0037	0018
NE-37	Humboldt	Nims, Reuel, Store	0003	0013	0003
NH-211	Marlborough	Stone, Solon W., House	0000	0015	0003
NJ-864	Atlantic City	Blenheim Hotel	0014	0173	0019
NJ-862	Atlantic City	Dennis Hotel	0016	0127	0014
NJ-863	Atlantic City	Marlborough Hotel	0013	0076	0011
NJ-976	Atlantic City	Marlborough, Blenheim & Dennis Hotels (Aer	0000	0070	0000
NJ-975	Atlantic City	Sun Gallery Bridge	0000	0015	0000
NJ-877	Red Bank	Fortune, T. Thomas, House	0000	0001	0007
NJ-874	Trenton	New Jersey State Prison	0000	0019	0104
NM-148	Los Alamos vic.	Romero Cabin	0003	0000	0000
NM-146	Mountainair vic.	Mision San Gregorio de Abo	0014	0000	0000
NM-147	Mountainair vic.	Missions of San Buenaventura & San Isidore	0011	0000	0000
NM-107	Santa Fe vic.	Pueblo of Nambe	0002	0001	0002
NY-6286	Athens	Hudson-Athens Lighthouse	0009	0000	0000
NY-5502	Binghamton	1 Dickinson Street (House)	0000	0003	0016
NY-5506	Binghamton	1 Winding Way (House)	0000	0002	0016
NY-5503	Binghamton	3 Dickinson Street (House)	0000	0001	0016
NY-5507	Binghamton	3 Winding Way (House)	0000	0003	0016
NY-5504	Binghamton	4 Dickinson Street (House)	0000	0002	0016
NY-5505	Binghamton	8 Dickinson Street (House)	0000	0002	0016
NY-5611	Buffalo	Martin, Darwin, House	0027	0015	0013
NY-6296	Flushing	Kingsland	0005	0000	0000
NY-6148	Hastings-on-Hud	Cropsey House and Studio	0011	0000	0000
NY-5618	Irvington	Villa Lewaro	0000	0002	0005
NY-365	Mayfield	Rice Homestead	0017	0004	0002
NY-6086-B	New York City	Ellis Island, Baggage & Dormitory Bldg.	0000	0002	0000
NY-6086-D	New York City	Ellis Island, Ferry Building	0000	0005	0000
NY-6086-G	New York City	Ellis Island, Hospital	0000	0001	0000

Appendix I

HABSCODE	CITY-TOWN	RECORD NAME	NDRW	NPHO	DATA
NY-6086-F	New York City	Ellis Island, Kitchen, Restaurant & Bath Ho	0000	0005	0000
NY-6086-C	New York City	Ellis Island, Main Building	0000	0033	0001
NY-6086-H	New York City	Ellis Island, Water Towers	0000	0002	0000
NY-461	New York City	Gracie Mansion	0000	0057	0000
NY-6295	New York City	Seventh Regiment Armory	0000	0102	0001
NY-5428	Owego	Lovejoy, Dr. Ezekiel, House	0001	0009	0006
NY-5708-58	Tyre	Lay, Hiram, Carriage House	0000	0026	0025
OH-50	Akron	Stan Hywet Hall	0000	0145	0005
OH-50-A	Akron	Stan Hywet Hall, Carriage House & Garage	0000	0018	0000
OH-50-B	Akron	Stan Hywet Hall, Garden House & Garden	0000	0006	0000
OH-50-C	Akron	Stan Hywet Hall, Gate House & Entrance Gate	0000	0006	0000
OH-50-E	Akron	Stan Hywet Hall, Lookouts	0000	0003	0000
OH-50-D	Akron	Stan Hywet Hall, Service Bldg./Gardener's	0000	0005	0000
OH-2304	Boston Twp.	Kendall Lake Shelter	0000	0010	0001
OH-2254	Mentor	Lawnfield	0014	0017	0000
OH-2254-B	Mentor	Lawnfield, Barn	0001	0001	0000
OH2254-G	Mentor	Lawnfield, Campaign Office	0000	0003	0000
OH-2254-A	Mentor	Lawnfield, Carriage House & Gasholder	0005	0005	0000
OH-2254-F	Mentor	Lawnfield, Chicken Coop	0001	0001	0000
OH-2254-I	Mentor	Lawnfield, Cottage	0000	0002	0000
OH-2254-H	Mentor	Lawnfield, Second Tenant House	0000	0001	0000
OH-2254-B	Mentor	Lawnfield, Tenant House	0001	0002	0000
OH-2254-A	Mentor	Lawnfield, Windmill	0001	0002	0000
OH-23-6-A	Northfield Cent.	Wallace, James, Barn	0000	0006	0001
OH-2306	Northfield Cent.	Wallace, James House	0000	0006	0006
OH-2306-B	Northfield Centt.	Wallace, James, Outbuilding	0000	0001	0000
OH-2226	Oberlin	Lsnngston, John Mercer, House	0000	0002	0003
OH-2302	Peninsula vic.	Happy Days Shelter	0000	0005	0001
OH-2303	Peninsula vic.	Ledges Shelter	0000	0008	0001
OH-2305	Peninsula vic.	Octagon Shelter	0000	0005	0001
OH-2274	Piqua	Central Union Telephone Company Bldg.	0000	0014	0006
OH-2275	Piqua	Shannon/Kiser Building	0000	0011	0007
OH-2312	Portsmouth	All Saints Episcopal Church	0000	0003	0001
OH-2317	Portsmouth	Excelsior Shoe Factory	0000	0002	0001
OH-2320	Portsmouth	Greyhound Bus Depot	0000	0003	0001
OH-2309	Portsmouth	Hall, William, House	0000	0006	0001
OH-2319	Portsmouth	Holly Store	0000	0005	0001
OH-2313	Portsmouth	Hoobler, Emerson & Grace, House	0000	0004	0001
OH-2316	Portsmouth	Independent Order of Odd Fellows	0000	0009	0001
OH-2310	Portsmouth	Kinney, Peter, House	0000	0005	0001
OH-2318	Portsmouth	Kirby's Flower Shop	0000	0003	0001
OH-2308	Portsmouth	McDowell, John, House	0000	0005	0001
OH-664	Portsmouth	Newman, William, House	0000	0015	0008
OH-2315	Portsmouth	Portsmouth Foundry	0000	0005	0001
OH-2314	Portsmouth	Tracey House	0000	0005	0001
OH-2149	Stockport	McKibben's Grocery	0000	0004	0005
OH-2307	Valley View	Frazee, Stephen, House	0000	0003	0001
OH-2289	Youngstown	Eagle's Hall	0000	0020	0000
OR-140	Eugene	Eugene Mill & Blevator	0010	0000	0000
PA-5347	Chalkhill vic.	Hagan, Isaac N., House	0000	0039	0000
PA-1964	Gettysburg vic.	Bender, Theodore, House	0009	0000	0000
PA-1963	Gettysburg vic.	Blocher House	0003	0000	0000
PA-365-A	Gettysburg vic.	Bushman Barn	0012	0000	0000
PA-1965	Gettysburg vic.	Cobean Farm	0004	0000	0000
PA-1961	Gettysburg vic.	Hummelbaugh Farm	0001	0000	0000
PA-1961-A	Gettysburg vic.	Hummelbaugh Farm, House	0001	0000	0000

Appendix I

HABSCODE	CITY-TOWN	RECORD NAME	NDRW	NPHO	DATA
PA-341-A	Gettysburg vic.	Leister, Lydia, Barn	0008	0000	0000
PA-1187	Gettysburg vic.	McClellan House	0007	0000	0000
PA-580	Gettysburg vic.	Patterson, William, House	0005	0000	0000
PA-356-B	Gettysburg vic.	Slyder Barn	0005	0000	0000
PA-1960	Gettysburg vic.	Spangler Farm	0001	0000	0000
PA-357	Gettysburg vic.	Spangler Farm, Carriage House	0005	0000	0000
PA-1960-A	Gettysburg vic.	Spangler Farm, House	0002	0000	0000
PA-1960-C	Gettysburg vic.	Spangler Farm, Storage House & Woodshed	0001	0000	0000
PA-1960-B	Gettysburg vic.	Spangler Farm, Summer Kitchen	0002	0000	0000
PA-1962	Gettysburg vic.	Trostle Barn	0010	0000	0000
PA-358	Gettysburg vic.	Weikert Barn	0008	0002	0001
PA-5360	King of Prussia	Commercial Building	0004	0000	0001
PA-1356	Monoca	Washington, George, School	0000	0010	0020
PA-5354	Newville vic.	Sterrett, David, House	0000	0020	0002
PA-1071	Philadelphia	Christ Church	0019	0036	0000
PA-1533	Philadelphia	Philadelphia Saving Fund Society	0000	0033	0000
PA-1175-B	Pittsburgh	Penn RR Stn, Open Concourse & Concourse R	0000	0004	0006
PA-1175-A	Pittsburgh	Penn RR Stn, South Baggage Passage & Ca	0000	0004	0008
PA-5369	Valley Forge	Jones House	0000	0000	0002
PR-122	San German	Acosta y Fores, Jaime, Casa	0008	0000	0000
PR-123	San German	Ortiz Perichi, Juan, Casa	0011	0000	0000
PR-124	San Juan	106 Calle San Jose (House)	0005	0000	0000
PR-61	San Juan	Historic Zone, Block Study	0012	0000	0005
RI-49	Providence	Providence Biltmore Hotel	0000	0012	0018
RI-387	Providence	World War I Monument	0000	0018	0009
SC-615-C		Williams Place, Frame Barn	0000	0007	0000
SC-621	Belton	Southern Railway Combined Depot	0000	0007	0002
SC-592	Bluffton vic.	Rose Hill Plantation House	0000	0016	0001
SC-589	Cedar Springs	Frazier-Pressley House	0000	0013	0001
SC-589-A	Cedar Springs	Frazier-Pressley House, Privy	0000	0005	0000
SC-269	Charleston	Robinson-Aiken House	0010	0054	0009
SC-610	Clemson vic.	Old Stone Church & Cemetery	0000	0013	0001
SC-614	Columbia	Consolidated Building	0000	0003	0001
SC-612	Columbia	Greyhound Bus Station	0000	0008	0001
SC-253	Columbia	Lunatic Asylum	0000	0019	0009
SC-611	Columbia	Palmetto Building	0000	0009	0001
SC-601	Crocketville vic.	Cohasset	0000	0010	0001
SC-601-A	Crocketville vic.	Cohasset, Tenant House	0000	0001	0000
SC-622	Datha Island	Sams Tabby Complex (Ruins)	0000	0020	0001
SC-594	Dillion vic.	Smith Tobacco Barn	0000	0012	0001
SC-588-C	Frogmore vic.	Penn School Historic District, Brick Church	0000	0014	0002
SC-631-A	Georgetown vic.	Arundel Plantation, Slave Cabin	0000	0017	0001
SC-615-B	Glenn Springs	Williams Place, Kitchen	0000	0007	0000
SC-615-H	Glenn Springs	Williams Place, Commissary	0000	0007	0000
SC-615-G	Glenn Springs	Williams Place, Crib	0000	0007	0000
SC-615-D	Glenn Springs	Williams Place, Double Log Barn	0000	0005	0000
SC-615	Glenn Springs	Williams Place, Main House	0000	0019	0001
SC-615-I	Glenn Springs	Williams Place, Smithy	0000	0002	0000
SC-615-E	Glenn Springs	Williams Place, Smokehouse	0000	0007	0000
SC-615-F	Glenn Springs	Williams Place, Still House/Barn	0000	0009	0000
SC-615-A	Glenn Springs	Williams Place, Tenant House	0000	0014	0000
SC-597	Greenville	Broad Margin	0000	0028	0002
SC-599	Greenville	Lanneau-Norwood House	0000	0017	0002
SC-559-A	Greenville	Lanneau-Norwood House, Carriage House & G	0000	0001	0000
SC-600	Greenwood	Stony Point	0000	0013	0002
SC-385-A	Hunting Island	Hunting Island Lighthouse Complex, Lighthou	0001	0015	0001

Appendix I

HABSCODE	CITY-TOWN	RECORD NAME	NDRW	NPHO	DATA
SC-385-C	Hunting Island	Hunting Island Lighthouse Complex, Oil Hous	0002	0001	0000
SC-385-D	Hunting Island	Hunting Island Lighthouse, Cottage HI-64	0000	0004	0000
SC-385-E	Hunting Island	Hunting Island Lighthouse, Cottage HI-65	0000	0003	0000
SC-157	Jenkinsville vic.	First Associate Reformed Presbyterian Chur	0000	0017	0001
SC-604	Lancaster	Lancaster County Courthouse	0000	0013	0001
SC-605	Lancaster	Lancaster County Jail	0000	0011	0001
SC-376	Laurens	Holmes, Zelotes, House	0009	0026	0009
SC-606	Laurens	Owings, John Calvin, House	0000	0021	0001
SC-606-A	Laurens	Owings, John Calvin, House, Outbuildings	0000	0002	0000
SC-603	McPhersonville	Stony Creek Presbyterian Church	0000	0008	0001
SC-616	Moore	Walnut Grove	0000	0016	0001
SC-616-C	Moore	Walnut Grove, Academy	0000	0003	0000
SC-616-D	Moore	Walnut Grove, Kitchen	0000	0001	0000
SC-616-A	Moore	Walnut Grove, Outbuildings	0000	0002	0000
SC-616-B	Moore	Walnut Grove, Wheat House Cabin	0000	0002	0000
SC-607	Orangeburg	Clafflin College, Lee Library	0000	0017	0001
SC-619-A	Rock Hill	Winthrop College, Withers Building	0000	0015	0001
SC-619-B	Rock Hill	Winthrop College, Tillman Building	0000	0015	0001
SC-595	Rosinville vic.	Indian Fields Methodist Campground	0000	0040	0002
SC-590	St. Helena Isla	St. Helena Island Parish Church Ruins	0000	0014	0001
SC-591	St. Helena Isla	St. Helena Island Parish, Edgar Fripp Maus	0000	0012	0001
SC-593	St. Matthews	Banks, Joseph, House	0000	0011	0001
SC-618	Union	Carnegie Free Library	0000	0012	0001
SC-623	Winnsboro	Tocaland	0000	0007	0001
TN-6	Clarksville	Washington Hotel	0000	0000	0005
TN-243	Knoxville	St. John's Episcopal Church	0000	0012	0000
TN-216	Knoxville	Zeigler, Isaac B., House	0000	0004	0003
TN-219	McMinnville	Northcut Plantation	0000	0016	0003
TN-45	South Pittsburg	Christ Episcopal Church & Parish House	0000	0010	0008
TX-288	Bryan	Temple Freda	0009	0000	0000
TX-3336	Dallas	Fair Park	0001	0000	0000
TX-3336-A	Dallas	Fair Park, Coliseum	0008	0000	0000
TX-3336-B	Dallas	Fair Park, General Exhibits Bldg.	0012	0000	0000
TX-3102-C	Fort Davis	Fort Davis, Officer's Quarters	0000	0002	0000
TX-3330	Hye	Hye Post Office & General Store	0003	0000	0000
TX-3338	Lubbock	Chatman Hospital	0003	0000	0000
TX-319	San Antonio	Mision Nuestra Senora de la Purisima Con	0013	0015	0010
TX-320	San Antonio	Mission San Francisco de la Espada	0013	0049	0007
TX-333	San Antonio	Mission San Jose y San Miguel de Aguayo	0021	0033	0016
TX-321	San Antonio	Mission San Juan de Capistrano	0017	0025	0006
TX-321-G	San Antonio	Mission San Juan de Capistrano, Tefu Hous	0000	0006	0000
TX-321-A	San Antonio	Mission Senora de la Purisimo Concepcion	0000	0017	0006
TX-319-B	San Antonio	Mission Senora de la Purisimo Concepcion	0000	0003	0003
TX-334	San Antonio	San Antonio Missions Nat'l Hist. Park	0001	0000	0000
TX-3329	Stonewall	Evangelical Lutheran Church, Congre. of the	0004	0000	0000
TX-3340	Victoria	McNamara House	0008	0000	0000
UT-116	Ogden	Lewis Building	0000	0008	0002
UT-110	Springdale vic.	Oak Creek Historic Complex	0000	0003	0000
UT-110-L	Springdale vic.	Oak Creek Historic Complex, Carpenter Shop	0000	0003	0000
UT-110-P	Springdale vic.	Oak Creek Historic Complex, Equipment Shop	0000	0001	0000
UT-110-M	Springdale vic.	Oak Creek Historic Complex, Firehouse	0000	0002	0000
UT-110-O	Springdale vic.	Oak Creek Historic Complex, Machine Shop	0000	0004	0000
UT-110-A	Springdale vic.	Oak Creek Historic Complex, Ranger's Dorm	0000	0007	0000
UT-110-B	Springdale vic.	Oak Creek Historic Complex, Ranger's Hous	0000	0004	0000
UT-110-C	Springdale vic.	Oak Creek Historic Complex, Ranger's Hous	0000	0003	0000
UT-110-D	Springdale vic.	Oak Creek Historic Complex, Ranger's Hous	0000	0002	0000

Appendix I

HABSCODE	CITY-TOWN	RECORD NAME	NDRW	NPHO	DATA
UT-110-E	Springdale vic.	Oak Creek Historic Complex, Ranger's Hous	0000	0002	0000
UT-110-F	Springdale vic.	Oak Creek Historic Complex, Ranger's Hous	0000	0003	0000
UT-110-G	Springdale vic.	Oak Creek Historic Complex, Ranger's Hous	0000	0002	0000
UT-110-H	Springdale vic.	Oak Creek Historic Complex, Ranger's Hous	0000	0002	0000
UT-110-I	Springdale vic.	Oak Creek Historic Complex, Three Stall Ga	0000	0001	0000
UT-110-J	Springdale vic.	Oak Creek Historic Complex, Two Stall Gar	0000	0001	0000
UT-110-K	Springdale vic.	Oak Creek Historic Complex, Two Stall Gar	0000	0001	0000
UT-110-N	Springdale vic.	Oak Creek Historic Complex, Warehouse	0000	0003	0000
UT-109-B	Springdale vic.	Pine Creek Historic Complex, Asst. Supt's	0000	0003	0000
UT-109-C	Springdale vic.	Pine Creek Historic Complex, Chief Ranger	0000	0003	0000
UT-109-A	Springdale vic.	Pine Creek Historic Complex, Superintende	0000	0004	0000
UT-109-E	Springdale vic.	Pine Creek Historic Complex, Three Stall	0000	0001	0000
UT-109-D	Springdale vic.	Pine Creek Historic Complex, Two Stall Ca	0000	0002	0000
UT-112-E	Springdale vic.	Zion Lodge/Birch Creek Complex, Bake Shop	0000	0001	0000
UT-112-D	Springdale vic.	Zion Lodge/Birch Creek Complex, Barber Sh	0000	0001	0000
UT-112-B	Springdale vic.	Zion Lodge/Birch Creek Complex, Duplex Ca	0000	0002	0000
UT-112-C	Springdale vic.	Zion Lodge/Birch Creek Complex, Family Ca	0000	0001	0000
UT-112-I	Springdale vic.	Zion Lodge/Birch Creek Complex, Five Stall	0000	0001	0000
UT-112-J	Springdale vic.	Zion Lodge/Birch Creek Complex, Machine S	0000	0002	0000
UT-112-H	Springdale vic.	Zion Lodge/Birch Creek Complex, Mattress	0000	0001	0000
UT-112-F	Springdale vic.	Zion Lodge/Birch Creek Complex, Men's Dorn	0000	0003	0000
UT-112-A	Springdale vic.	Zion Lodge/Birch Creek Complex, Quadruple	0000	0003	0000
UT-110-G	Springdale vic.	Zion Lodge/Birch Creek Complex, Women's Do	0000	0003	0000
UT-112	Springdale vic.	Zion Lodge/Birch Creek Historic Complex	0000	0005	0000
UT-108	Springdale vic.	Zion National Park	0000	0000	0024
UT-108-G	Springdale vic.	Zion National Park, East Entrance Checkin	0000	0002	0000
UT-108-I	Springdale vic.	Zion National Park, East Entrance Sign	0000	0001	0000
UT-108-H	Springdale vic.	Zion National Park, East Ranger's House	0000	0001	0000
UT-108-F	Springdale vic.	Zion National Park, Gateway to Narrows In	0000	0001	0000
UT-108-E	Springdale vic.	Zion National Park, Grotto Comfort Station	0000	0001	0000
UT-108-J	Springdale vic.	Zion National Park, Pioneer Csbin	0000	0002	0000
UT-108-B	Springdale vic.	Zion National Park, South Campground Amphi	0000	0002	0000
UT-108-C	Springdale vic.	Zion National Park, South Campground Conf	0000	0002	0000
UT-108-K	Springdale vic.	Zion National Park, Stone Quarry	0000	0002	0000
UT-108-A	Springdale vic.	Zion National Park, Zion Inn	0000	0008	0000
UT-108-D	Springdale vic.	Zion National Park, Zion Museum	0000	0003	0000
VA-1238	Boswells Tavern	St. Johns Chapel	0007	0003	0002
VA-1245	Carters Bridge	Redlands	0006	0000	0011
VA-1244	Carters Bridge	Tallwood	0005	0000	0016
VA-193-M	Charlottesville	University of Virginia, Hotel B	0008	0000	0010
VA-193-L	Charlottesville	University of Virginia, Pavilion VIII	0009	0000	0013
VA-1247	Charlottesville	Winn, John, House	0012	0000	0013
VA-1246	Bsmont vic.	Woodville, Old	0005	0000	0006
VA-303-C	Forest vic.	Poplar Forest, Slave Quarters	0003	0017	0000
VA-640	Fredericksburg	Salem Church	0010	0000	0000
VA-1248	Greenfield	Coles, Edward, House	0006	0000	0000
VA-1243	Keene vic.	Enniscorthy	0005	0000	0000
VA-1214	Montpelier Sta.	Montpelier	0010	0000	0000
VA-1249	Pleasant Valley	Pleasant Valley Depot	0005	0000	0007
VA-1242	Richmond	Governor's Mansion	0016	0000	0000
VA-1242-A	Richmond	Governor's Mansion, Summer Kitchen	0001	0000	0000
VA-1241	Richmond	Monumental Church	0021	0057	0000

Appendix I

HABSCODE	CITY-TOWN	RECORD NAME	NDRW	NPHO	DATA
VA-310	Richmond	Wickham Valetine House	0018	0011	0002
VA-73	Simonson vic.	Morattico	0001	0001	0001
VA-72	Warsaw vic.	Mount Airy	0000	0042	0002
VI-2-C	Reef Bay Qtr.	Estate Reef Bay, Sugar Factory	0011	0035	0010
VI-49-C	Westend Quarter	Estate Whin, Overhead Crank Steam Engine	0002	0022	0000
WA-178	Bremerton	Central Power Station	0000	0024	0018
WA-150	Seattle	Fort Lawton	0002	0007	0033
WA-150-A	Seattle	Fort Lawton, Administrative Building	0000	0003	0002
WA-150-B	Seattle	Fort Lawton, Bake House	0000	0002	0002
WA-150-C	Seattle	Fort Lawton, Band Barracks	0000	0003	0002
WA-150-D	Seattle	Fort Lawton, Civilian Employee Quarters	0000	0004	0002
WA-150-E	Seattle	Fort Lawton, Double Barracks	0000	0006	0002
WA-150-F	Seattle	Fort Lawton, Double Barracks	0004	0006	0002
WA-150-G	Seattle	Fort Lawton, Double Non-Commissioned Offi	0000	0003	0002
WA-150-H	Seattle	Fort Lawton, Double Non-Commissioned Offi	0000	0002	0002
WA-150-I	Seattle	Fort Lawton, Double Non-Commissioned Offi	0000	0003	0002
WA-150-J	Seattle	Fort Lawton, Double Non-Commissioned Offi	0000	0002	0002
WA-150-K	Seattle	Fort Lawton, Double Officers Quarters	0000	0002	0002
WA-150-L	Seattle	Fort Lawton, Double Officers Quarters	0000	0002	0002
WA-150-M	Seattle	Fort Lawton, Double Officers Quarters	0000	0004	0002
WA-150-N	Seattle	Fort Lawton, Double Officers Quarters	0000	0006	0002
WA-150-O	Seattle	Fort Lawton, Double Officers Quarters	0000	0003	0002
WA-150-P	Seattle	Fort Lawton, Double Officers Quarters	0000	0003	0002
WA-150-Q	Seattle	Fort Lawton, Guard House	0005	0004	0002
WA-150-R	Seattle	Fort Lawton, Hospital Stewards Quarters	0000	0003	0002
WA-150-S	Seattle	Fort Lawton, Post Exchange & Gymnasium	0004	0003	0002
WA-150-T	Seattle	Fort Lawton, Quartermaster Stables	0000	0003	0002
WA-150-U	Seattle	Fort Lawton, Quartermaster Stables	0003	0003	0002
WA-150-V	Seattle	Fort Lawton, Quartermaster Storehouse	0000	0005	0002
WA-150-W	Seattle	Fort Lawton, Quartermaster Storehouse & O	0000	0002	0002
WA-150-X	Seattle	Fort Lawton, Single Officers Quarters	0000	0004	0002
WA-154	Seattle	Pacific Aero Products Company	0017	0000	0000
WI-305	Menasha	Marx, John, House	0000	0009	0008
WI-304-A	Racine	Secor, M.H., Trunk Company, Central Office	0000	0005	0007
WI-304	Racine	Secor, M.H., Trunk Company	0000	0003	0000
WI-304-B	Racine	Secor, M.H., Trunk Company, Industrial Bldg	0000	0005	0006
WI-304-C	Racine	Secor, M.H., Trunk Company, Industrial Bldg	0000	0005	0006
WV-168	Harpers Ferry	Harper House	0008	0000	0000
WV-224	Harpers Ferry	Harpers Ferry Nat'l Historical Park, Gen.	0000	0000	0001
WV-229	Harpers Ferry	Stagecoach Inn	0000	0008	0001

Appendix I

PART 8: HAER TRANSMITTALS

HAERCODE	CITY TOWN	RECORD NAME	NDRW	NPHO	DATA
AK-7	Bettles vic.	Wilcox, A.D., Drift Mine	0000	0001	0001
AK-7-A	Bettles vic.	Wilcox, A.D., Drift Mine, Boiler Cabin	0000	0004	0000
AK-7-B	Bettles vic.	Wilcox, A.D., Drift Mine, Headframe	0000	0001	0000
AK-7-C	Bettles vic.	Wilcox, A.D., Drift Mine, Residential Cabin	0000	0004	0000
AK-12	Chicken vic.	Wade, Jack, Dredge	0000	0022	0001
AK-17	Chisana	Thorall, Ivan, Steam Powered Sawmill	0000	0004	0001
AK-15	Chitina vic.	Copper River & Northwestern RR, Gilahina	0000	0005	0001
AK-10	Cordova vic.	Copper River & Northwest RR, Million Dollar	0000	0017	0001
AK-11	Eagle vic.	Gold Placers Incorporated	0000	0000	0001
AK-11-A	Eagle vic.	Gold Placers Incorporated, Dredge	0000	0014	0000
AK-11-C	Eagle vic.	Gold Placers Incorporated, Mess Hall	0000	0001	0000
AK-11-B	Eagle vic.	Gold Placers Incorporated, Warehouse	0000	0002	0000
AK-11-D	Eagle vic.	Gold Placers Incorporated, Workers Qtrs.	0000	0001	0000
AK-1	Kennecott	Kennecott Copper Corporation	0015	0144	0062
AK-9	McCarthy vic.	Green Butte Copper Co.	0000	0006	0001
AK-9-B	McCarthy vic.	Green Butte Copper Co., Bathhouse	0000	0001	0001
AK-9-C	McCarthy vic.	Green Butte Copper Co., Bunkhouse	0000	0003	0001
AK-9-J	McCarthy vic.	Green Butte Copper Co., Bunkhouse (Upper)	0000	0007	0001
AK-9-I	McCarthy vic.	Green Butte Copper Co., Covered Stairway	0000	0002	0001
AK-9-A	McCarthy vic.	Green Butte Copper Co., Manager's House	0000	0002	0001
AK-9-H	McCarthy vic.	Green Butte Copper Co., Portal Shed	0000	0006	0001
AK-9-D	McCarthy vic.	Green Butte Copper Co., Stables	0000	0008	0001
AK-9-E	McCarthy vic.	Green Butte Copper Co., Tin Shed	0000	0001	0001
AK-9-F	McCarthy vic.	Green Butte Copper Co., Tram Terminous	0000	0001	0001
AK-9-G	McCarthy vic.	Green Butte Copper Co., Warehouse	0000	0003	0001
AK-14	McCarthy vic.	Nizina Bridge	0000	0006	0001
AK-16	Nome vic.	Council City & Solomon River RR: Locomotive	0000	0004	0000
AR-3	Ponca	Boxley Grist Mill	0020	0000	0000
AZ-3	Grand Canyon N.	Water Reclamation Plant	0000	0044	0014
CA-55	Isleton	Sacramento River Bridge	0000	0001	0000
CA-52	Livermore vic.	Carroll Overhead Bridge	0000	0020	0008
CA-50	Los Angeles	Zanja No. 3: Brick Culvert	0001	0014	0051
CA-29	Salyer vic.	South Fork Trinity River Bridge	0000	0026	0005
CO-39	Black Hawk	Gregory Tailings (Ruins)	0000	0012	0004
CO-44	Brighton vic.	Baseline Bridge	0000	0007	0002
CO-48	Denver	Broadway Bridge	0000	0009	0002
CO-38	Durango	San Juan & New York Mining & Smelting: Smel	0000	0008	0010
CO-38-A	Durango	San Juan & New York Smelter, Superin. House	0000	0003	0009
CO-40	Hotchkiss vic.	Hotchkiss Bridge	0000	0009	0002
CO-49	Nathrop vic.	Hortense Bridge	0000	0010	0010
CO-10	Rangely vic.	Uintah Railway, Whiskey Creek Trestle	0000	0004	0009
CT-30	Danbury	Patch Street Bridge	0000	0020	0020
CT-29	New Haven	Water Street Bridge	0000	0013	0010
GA-66	Adairsville vic.	Woody Allen Road Bridge	0000	0006	0001
GA-68	Cash vic.	Lutens Bridge	0000	0004	0002
GA-65	Fairmont vic.	Gordon County Road 220 Bridge	0000	0005	0001
GA-67	Jefferson	Curry Creek Bridge	0000	0009	0001
GU-1	Orote Point	Orote Point Airfield	0000	0006	0006
IA-19	Decorah vic.	Freeport Bridge	0003	0038	0001
IA-22	Guttenburg	Upper Miss. River 9-Foot Channel, Lock&Dam	0000	0114	0011
IA-18	Kendallville vic.	Lower Plymouth Rock Bridge	0000	0026	0080
ID-12	Bruneau Valley	Hot Springs Bridge	0000	0016	0008
IL-22	Saunemin vic.	Vieley Bridge	0000	0014	0006
KY-20	Covington vic.	Covington & Cincinnati Suspension Bridge	0000	0004	0001
KY-19	Loretto vic.	Burks' Makers Mark Distillery	0000	0009	0001
KY-9	Louisville	Louisville Water Company Pumping Station	0000	0009	0001

Appendix I

HABRCODE	CITY-TOWN	RECORD NAME	NDRW	NPHO	DATA
LA-1	Thibodaux	Laurel Valley Sugar Plantation	0002	0017	0023
LA-1-F	Thibodaux	Laurel Valley Sugar Plantation: Boarding	0002	0006	0000
LA-1-H	Thibodaux	Laurel Valley Sugar Plantation: Double Car	0002	0010	0000
LA-1-C	Thibodaux	Laurel Valley Sugar Plantation: Drainage	0002	0005	0029
LA-1-G	Thibodaux	Laurel Valley Sugar Plantation: Engineer	0001	0001	0000
LA-1-B	Thibodaux	Laurel Valley Sugar Plantation: Railroad	0000	0001	0026
LA-1-A	Thibodaux	Laurel Valley Sugar Plantation: Sugar Mill	0006	0014	0077
MA-56	Boston	72 Marlborough St., Residential Hydraulic	0000	0016	0013
MA-65	Boston	East Boston Pumping Station	0000	0016	0002
MA-80	Dedham	Norfolk Manufacturing Co., Cotton Mill	0000	0020	0001
MA-82	Grafton	Wyman-Gordon Company, Grafton Plant	0000	0003	0000
MA-82-B	Grafton	Wyman-Gordon Company, Grafton Plant,18000	0000	0006	0000
MA-82-A	Grafton	Wyman-Gordon Company, Grafton Plant,2000	0000	0002	0000
MA-82-C	Grafton	Wyman-Gordon Company, Grafton Plant,50000	0000	0013	0001
MA-81	Ipswich	Choat Bridge	0001	0007	0001
MA-16	Lowell	Boott Cotton Mills	0100	0062	0099
MA-60-A	Worcester	Alden Research Laboratory, Rotating Boom	0000	0003	0001
MD-66	Baltimore	Abel, A.S., Building	0000	0002	0000
MD-63	Baltimore	American Can Company	0000	0003	0000
MD-61	Baltimore	Brown's Wharf Warehouse	0000	0004	0000
MD-65	Baltimore	Clipper Mill Worker Housing	0000	0001	0000
MD-59	Baltimore	Druid Mill (Textile)	0000	0003	0000
MD-64	Baltimore	Eigenbrot Brewery	0000	0003	0000
MD-62	Baltimore	Kerr-Jenkins Warehouse	0000	0009	0000
MD-60	Baltimore	Levering Coffee Warehouse	0000	0002	0000
MD-68	Baltimore	Matthews Bridge	0000	0011	0001
MD-56	Baltimore	Meadow Mill (Textile)	0000	0002	0000
MD-58-A	Baltimore	Mount Vernon Mills, Mill No. 1 (Textile)	0000	0002	0000
MD-58-B	Baltimore	Mount Vernon Mills, Mill No. 2 (Textile)	0000	0002	0000
MD-57	Baltimore	Mount Washington Mills	0000	0005	0000
MD-34	Baltimore	Pennsylvania Railroad: Canton Coal Pier	0000	0044	0002
MD-67	Baltimore	Strouse Building	0000	0004	0000
MI-28	Frankennuth vic.	Dehmel Road Bridge	0000	0000	0009
MI-18	Hamilton vic.	Thirty-sixth Street Bridge	0000	0007	0003
MI-17	Hastings vic.	McCann Road Bridge	0000	0007	0003
MN-24	Dresbach vic.	Upper Miss. River 9-Foot Channel, Lock&Dam	0000	0076	0009
MN-9	Duluth	Endion Passenger Depot	0000	0018	0004
MN-18	Minneapolis	Steel Arch Bridge	0000	0043	0034
MN-22	Minnieska vic.	Upper Miss. River 9-Foot Channel, Lock&Dam	0000	0092	0011
MN-21	Red Wing vic.	Upper Miss. River 9-Foot Channel, Lock&Dam	0000	0098	0011
MN-20	Red Wing vic.	Upper Miss. River 9-Foot Channel Project	0000	0098	0048
MN-23	Winona vic.	Upper Miss. River 9-Foot Channel, Lock&Dam	0000	0103	0010
MO-27	Bolivar vic.	Sunset Bridge	0000	0012	0013
MO-28	Dixon vic.	Riddle Bridge	0000	0017	0014
MO-29	Sedalia	Washington Avenue Bridge	0000	0017	0018
MO-40	St. Louis	Jefferson National Expansion Memorial AR	0000	0034	0000
MO-23	St. Louis	St. Louis Union Station Powerhouse	0000	0030	0012
MO-24	St. Louis	St. Louis Union Station Train Shed	0000	0004	0001
MS-5	Vicksburg	Keystone Bridge Company Bridge	0000	0013	0000
MS-7	Vicksburg	U.S.S. Cairo Ironclad	0000	0009	0000
MS-6	Vicksburg vi.	Illinois Central Gulf Railroad Bridge	0000	0005	0000
MT-36-C	Butte vic.	Butte Mineyards, Stewart Mine	0000	0023	0024
MT-11	Radersburg vic.	Vermont Marble Quarry, Abandoned Mine Site	0000	0004	0006
MT-31	Red Lodge vic.	Poster Gulch Mine	0000	0004	0001
MT-31-B	Red Lodge vic.	Foster Gulch Mine, Boiler Housing	0000	0001	0000
MT-31-D	Red Lodge vic.	Poster Gulch Mine, Change House	0000	0001	0000

Appendix I

HAERCODE	CITY-TOWN	RECORD NAME	NDRW	NPHO	DATA
MT-31-F	Red Lodge vic.	Foster Gulch Mine, Coal Bin	0000	0001	0000
MT-31-E	Red Lodge vic.	Foster Gulch Mine, Electric Power Station	0000	0001	0000
MT-31-G	Red Lodge vic.	Foster Gulch Mine, Fan Housing	0000	0001	0000
MT-31-C	Red Lodge vic.	Foster Gulch Mine, Machine Shop	0000	0002	0000
MT-31-A	Red Lodge vic.	Foster Gulch Mine, Tipple (Ruins)	0000	0001	0000
MT-32	Red Lodge vic.	Smith Mine	0000	0003	0030
MT-32-D	Red lodge vic.	Smith Mine, Blacksmith/Mine Car Repair Bldg	0000	0001	0000
MT-32-F	Red Lodge vic.	Smith Mine, Electric Transfer Building	0000	0001	0000
MT-32-E	Red Lodge vic.	Smith Mine, Machine Shop/Maintenance Bldg.	0000	0001	0000
NH-10	Campton	Osgood Bridge	0000	0023	0016
NJ-66	Bayonne	Bayonne Bridge	0000	0010	0001
NJ-67	East Millstone	Delaware & Raritan Canal: Six Mile Run C	0000	0004	0008
NJ-68	East Millstone	Delaware & Raritan Canal: Ten Mile Run C	0000	0008	0008
NJ-63	Hoboken	Hoboken Piers Headhouse	0000	0072	0037
NY-161	Jersey City	Holland Tunnel	0000	0000	0000
NV-7	Glendale Junct.	Muddy River Bridge	0000	0015	0007
NY-198	Buffalo	Bethlehem Steel Corp. Lackawanna Plant	0008	0000	0000
NY-60	Lockport	New York Central RR: Lockport Passenger	0000	0002	0001
NY-195	New York City	Central Park Bridges, Bow Bridges	0000	0006	0001
NY-192	New York City	Central Park Bridges, Bridge No. 24	0000	0003	0000
NY-193	New York City	Central Park Bridges, Bridge No. 27	0000	0004	0000
NY-194	New York City	Central Park Bridges, Gothic Arch	0000	0006	0000
NY-196	New York City	Central Park Bridges, Pinebank Arch, Bridge	0000	0003	0002
NY-197	New York City	Central Park, Ladies' Pavilion	0000	0001	0001
NY-129	New York City	George Washington Bridge	0000	0063	0001
NY-161	New York City	Holland Tunnel	0000	0043	0003
NY-138	New York City	Statue of Liberty	0004	0202	0002
NY-131	Poughkeepsie	Poughkeepsie Bridge	0000	0027	0001
NY-66	Staten Island	Bayonne Bridge	0000	0000	0000
NY-1-A	Watervliet	Watervliet Arsenal	0007	0083	0027
OH-42	Antwerp vic.	"Forder" Pratt Through Truss Bridge	0000	0007	0014
OH-52	Bladensburg vic.	Bladensburg Concrete Bowstring Bridge	0000	0005	0013
OH-66	Brecksville	Brecksville-Northfield High Level Bridge	0000	0008	0001
OH-67	Brecksville	Station Road Bridge	0000	0011	0001
OH-44	Carroll vic.	Bright, John, No. 1 Iron Bridge	0005	0005	0015
OH-45	Carroll vic.	Bright, John, No. 2 Covered Bridge	0005	0006	0005
KY-20	Cincinnati vic.	Covington & Cincinnati Suspension Bridge	0000	0000	0000
OH-64	Cleveland	Alcoa Forging Div.: Mesta 50,000-Ton Forge	0000	0020	0002
OH-16	Cleveland	Carnegie-Lorain Bridge	0000	0001	0001
OH-56	Cleveland	Carter Road Lift Bridge	0000	0017	0007
OH-55	Cleveland	Columbus Road Lift Bridge	0000	0012	0008
OH-65-B	Columbus	Battelle Memorial Institute, First Hip Ve	0000	0008	0001
OH-65-A	Columbus	Battelle Memorial Institute, Xerography	0000	0003	0000
OH-50	Lockland	Benson Street Concrete Bowstring Bridge	0000	0006	0010
OH-46	Lykens vic.	Smith Road Bowstring Arch Bridge	0003	0006	0006
OH-49	Miamitown	Harrison Road Camelback Through Truss Brid	0000	0009	0008
OH-40	Poland	Main Street Parker Pony Truss Bridge	0000	0004	0005
OH-39	Poland	White Bowstring Arch Truss Bridge	0003	0010	0014
OH-53	Portsmouth	Scioto Pennsylvania Through Truss Bridge	0000	0013	0009
OH-47	Roseville	First Street Reinforced Concrete Bridge	0001	0006	0009
OH-54	Ross vic.	Old Colerain Pennsylvania Through Truss	0000	0004	0016
OH-43	Stoutsville vic.	Fosnaugh Truss Leg Bedstead Bridge	0004	0006	0008
OH-48	Tiffin vic.	Abbott's Parker Through Truss Bridge	0000	0008	0007
OH-58	Valley View	Alexander's Grist Mill	0007	0025	0013
OH-51	Van Wert vic.	Town Creek Truss-Leg Bedstead Bridge	0000	0005	0005
OH-41	Youngstown	Mahoning Ave. Pratt Double-Deck Bridge	0000	0023	0010

Appendix I

HAERCODE	CITY-TOWN	RECORD NAME	NDRW	NPHO	DATA
OH-63	Youngstown	Republic Steel Bessemer Plant	0000	0008	0000
OK-2	Avant	Bridge over Bird Creek	0000	0011	0006
OK-4-C	Oklahoma City	Wilson's Edible Fats Factory	0000	0005	0000
OK-4-A	Oklahoma City	Wilson's Lard Refinery	0000	0003	0000
OK-4-B	Oklahoma City	Wilson's Oil House	0000	0003	0000
OK-4	Oklahoma City	Wilson's Oil House, Lard Refinery & Fats	0000	0000	0008
OR-4	Bonneville	Bonneville Power Admin. South Bank Substa.	0000	0020	0009
OR-9	Dayville vic.	Rock Creek Mining Dist: Upper, Lower & Wate	0000	0009	0013
OR-10	Walton vic.	Siuslaw River Bridge	0000	0012	0008
PA-55	Muncy vic.	Reading-Halls Station Bridge	0005	0030	0041
PA-86	Philadelphia	Callowhill Street Bridge	0000	0010	0001
PA-103	Point Pleasant	Pennsylvania Canal: Delaware Division	0000	0000	0013
PA-81	Shippingport	Shippingport Atomic Power Station	0000	0177	0030
PA-102	Williamsport	Memorial Avenue Bridge	0000	0042	0021
SC-19-B	Buffalo	Buffalo Cotton Textile Mill, Mill Office	0000	0008	0000
SC-19	Buffalo	Buffalo Cotton Textile Mill, Mill Office	0000	0006	0001
SC-19-A	Buffalo	Buffalo Cotton Textile Mill, Power Plant	0000	0001	0000
SC-19-C	Buffalo	Buffalo Cotton Textile Mill, Worker's Hous	0000	0004	0000
SC-19-D	Buffalo	Buffalo Cotton Textile Mill, Worker's Hous	0000	0001	0000
SC-10	Charleston	Chisholm Rice Mill	0000	0002	0000
SC-17	Columbia	Columbia Canal & Power Plant	0000	0068	0001
SC-16	Columbia	Gervais Street Bridge	0000	0012	0001
SC-18	Gaffney	Cowpens Iron Furnace	0000	0011	0002
SC-13	Johnsonville vic.	Browntown Cotton Gin	0000	0016	0002
SC-12	Lake City	Tobacco Redrying Plant	0000	0012	0001
SC-11	Latta vic.	Cotton Press	0000	0005	0001
SC-15	Parksville vic.	Callihan's Mill	0000	0016	0001
SC-14	Tigerville vic.	Poinsett Bridge	0000	0018	0002
TN-18	Carthage vic.	Buena Vista Ford Bridge	0000	0009	0006
TN-11	Chattanooga	Walnut Street Bridge	0000	0000	0038
TN-13	Gatlinburg	Mingus Flour Mill	0000	0012	0000
TN-16	Lenox vic.	Lenox Bridge	0000	0020	0003
TN-15	Nashville vic.	Newson's Mill Bridge	0000	0013	0008
TX-10	College Station	Bird Pond Road Bridge	0000	0004	0002
UT-48	Benson	Benson Bridge	0000	0011	0006
UT-49	Henefer	Henefer Bridge	0000	0016	0011
UT-40-D	Springdale vic.	Zion Nat'l Park Hist Trails Sys, Gateway	0000	0000	0002
UT-40-B	Springdale vic.	Zion Nat'l Park Hist Trails Sys, Canyon	0000	0000	0002
UT-40-C	Springdale vic.	Zion Nat'l Park Hist Trails Sys, East Rim	0000	0000	0002
UT-40-E	Springdale vic.	Zion Nat'l Park Hist Trails Sys, Grotto	0000	0000	0002
UT-40-G	Springdale vic.	Zion Nat'l Park Hist Trails Sys, West Rim	0000	0009	0002
UT-40-F	Springdale vic.	Zion Nat'l Park Hist Trails Sys, Hidden Cany	0000	0000	0003
UT-40-A	Springdale vic.	Zion Nat'l Park Hist Trails Sys, Angels	0000	0000	0002
UT-38-A	Springdale vic.	Zion Nat'l Park Irrigation Sys, Crawford/Gif	0000	0004	0002
UT-38-B	Springdale vic.	Zion Nat'l Park Irrigation Sys, Oak Creek	0000	0003	0000
UT-38-C	Springdale vic.	Zion Nat'l Park Irrigation Sys, Pine Creek	0000	0003	0000
UT-38-D	Springdale vic.	Zion Nat'l Park Irrigation Sys, Springdale	0000	0008	0000
UT-39	Springdale vic.	Zion-Mount Carmel Highway	0000	0010	0003
UT-39-A	Springdale vic.	Zion-Mount Carmel Highway Tunnel	0000	0006	0002
UT-39-B	Springdale vic.	Zion-Mount Carmel Highway, Pine Creek Bridge	0000	0004	0002
UT-39-C	Springdale vic.	Zion-Mount Carmel Highway, Virgin River Brid	0000	0003	0003
VA-39	Leesburg vic.	Goose Creek & Little River Navigation: Do	0003	0000	0002
VI-6	Cruz Bay Qtr.	Estate Adrian	0000	0011	0000
VI-8	Frederiksted	Estate Annaly: Sugar Mill	0000	0011	0000
VI-1	Hassel Island	Creque Marine Railway	0009	0019	0019
VI-10	Maho Bay Qtr.	Estate Cinnamon Bay: Sugar Mill Ruins	0000	0010	0000

Appendix I

HAERCODE	CITY-TOWN	RECORD NAME	NDRW	NPHO	DATA
VI-9	Northside B Qtr.	Estate Belvedere: Jamaican Train	0000	0003	0000
VI-3	Northside Qtr.	Estate Rust-Op-Twist: Steam Engine & Cane	0004	0010	0009
VI-2	Reef Bay Qtr.	Estate Reef Bay, Sugar Factory	0011	0035	0010
VI-5	Westend Qtr.	Estate Whim, Overhead Crank Steam Engine	0002	0022	0000
WA-15	Cedar Falls	Cedar Falls Hydroelectric Works	0000	0039	0021
WA-12	Electron	Electron Hydroelectric Project	0006	0089	0026
WA-17	Seattle	San Mateo Ferry	0000	0013	0001
WA-16	Usk vic.	Calispell Diversion Canal	0000	0015	0013
WI-47	Alma	Upper Miss. River 9-Foot Channel, Lock&Dam	0000	0118	0012
WI-14	Baraboo	Manchester Street Bridge	0000	0010	0008
WI-50	Lynxville vic.	Upper Miss. River 9-Foot Channel, Lock&Dam	0000	0083	0012
WI-48	Trempealeau vic.	Upper Miss. River 9-Foot Channel, Lock&Dam	0000	0079	0009
WV-36	Harpers Ferry	Baltimore & Ohio RR: Bollman Bridge (Ruins)	0006	0000	0000
WV-35	Harpers Ferry	Waterpower on Virginus Island	0004	0000	0037
WY-20	Buffalo vic.	Peloux Bridge	0000	0002	0002
WY-18	Centennial vic.	Cliff Mine	0000	0000	0009
WY-18-A	Centennial vic.	Cliff Mine, Bunkhouses	0000	0005	0001
WY-18-B	Centennial vic.	Cliff Mine, Log Mill	0000	0005	0001
WY-18-C	Centennial vic.	Cliff Mine, Mine Tailings Pile	0000	0001	0001
WY-19	Centennial vic.	Queen Mine	0000	0000	0008
WY-19-C	Centennial vic.	Queen Mine, Log Structures	0000	0001	0001
WY-19-B	Centennial vic.	Queen Mine, Outhouse	0000	0001	0001
WY-19-A	Centennial vic.	Queen Mine, Shafthouse	0000	0007	0001
WY-21	Hulett vic.	Missouri River Bridge	0000	0002	0002
WY-22	Saratoga vic.	Pick Bridge	0000	0004	0002

APPENDIX II

Honorable Mentions in the 1988 Charles E. Peterson Prize competition:

- Students: Maynard T. Ferguson, Jill Foster, Steven Paul Grube, David Wayne Krumbholz, Todd Louis Steighner, Kevin James Stubbs, and Philip Darryl Wegman
 School: University of Florida Faculty Sponsor: Herschel E. Shepard
 Building: "The Oldest House" (Gonzalez-Alvarez House), St. Augustine, Florida
- Students: Bruce Barton, Chan-chow Chen, Christine Hemmen, Kathleen Kurth, Alan LaFon, Michael Lane, Yu-ing David Liao, Don Marquardt, and Catherine Wilson
 School: Texas A&M University Faculty Sponsor: David G. Woodcock
 Building: Harrington-Upham House, Millican, Texas
- Students: Chris Crowder, David F. Elyea, and Andrew R. Oyen
 School: University of Virginia Faculty Sponsor: K. Edward Lay
 Building: Pavilion IX, University of Virginia, Charlottesville, Virginia
- Students: Robert Gallagher, Richard Irby, Matty Quinonez, Laurie Swedroe, Douglas Lister, Beau Clowney, and Crystal Mitchell
 School: Tulane University Faculty Sponsor: Eugene D. Cizek
 Building: Magnolia Plantation, Natchitoches, Louisiana
- Students: Bryce Hejtmancik, I-ming Hsuie, Nancy Larkin, Anthony J. Martin, Molly McCormick, Michael B. Ufer, Susan Ufer, Alfred Wang, and Catherine Wilson
 School: Texas A&M University Faculty Sponsor: David G. Woodcock
 Building: Gay-McGregor-Allen Log House, Peach Creek, Texas
- Students: David E. Basham, Foree Pendleton McCauley, and Christina R. Moon
 School: University of Virginia Faculty Sponsor: K. Edward Kay
 Building: Hotel A, University of Virginia, Charlottesville, Virginia
- Students: Robert J. Boyd, Steven Ward, Daniel Winkert, and Anne Schremser
 School: Tulane University Faculty Sponsor: Eugene D. Cizek
 Building: Chesneau Mansion, New Orleans, Louisiana
- Students: Douglas R. Mignel and Steven A. Novy
 School: University of Colorado Faculty Sponsors: Bob Kindig and Joan E. Draper
 Building: Moffat Station, Denver, Colorado
- Students: Lonnie Babin, Pamel J. Richard, Sylvia Thompson, Jeffrey S. Fowler, and Ping Be
 School: Louisiana State University Faculty Sponsor: J. Michael Pitts
 Building: Meeker Sugar Cooperative, Lecompte vicinity, Louisiana
- Students: Eve Helfman, Kimberly Kovel, Michael Mavrovitis, Daniel McNulty, James Murphy, Armando Rosich, Willie Rivera, Jeffrey M. Solak, Cynthia Steward, Ian Marc Swedroe, Richard Ward, Fradell Weinstein, Larry Weintraub, Crystall Mitchell, Dennis Galindo, Ferdheit Downing, Thea Johnson, Jeff Holtzclaw, and Laurie Luttrell
 School: Tulane University Faculty Sponsor: Eugene D. Cizek
 Building: Oakland Plantation, Bermuda, Louisiana

COVER PAGE:

A fireman, using a Firebird 100 fire truck, assists
HABS team member Katherine Powell in measuring a column
capital of the Virginia State Capitol in Richmond.

Photographer: Frederick J. Lindstrom, 1988
Cover Design: Paul D. Dolinsky and Joseph D. Balachowski