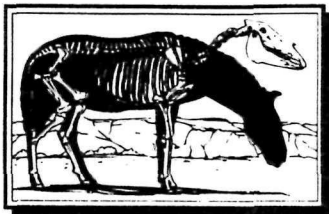


# HAGERMAN FOSSIL BEDS NATIONAL MONUMENT

The  
**FOSSIL**



**RECORD**

**FALL, 2000**

**VOLUME 9, No. 4**

**THE BARE BONES  
OF THIS ISSUE:**

Summer Re-Cap

Natural Resource  
Management

Education

## **SUMMER RE-CAP**

Our summer season was extremely busy. The staff presented over 15 interpretive programs, including children's storytelling, Monument by water, mountain bike tour, horse quarry tours and geology for kids. We also enjoyed providing activities for over 380 summer school and camp students.

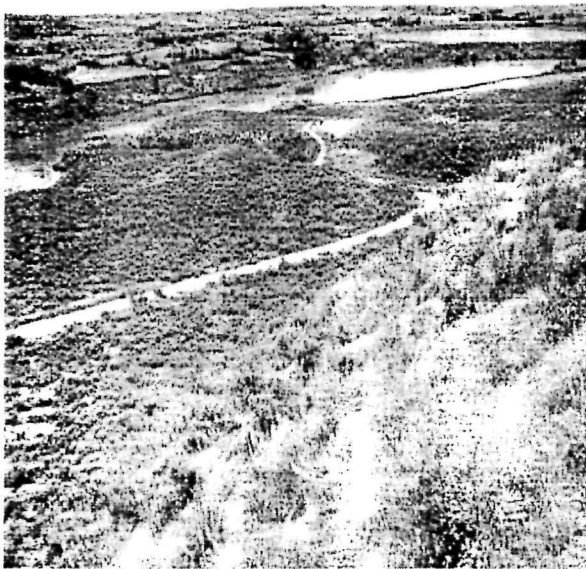
## **VISITOR CENTER HOURS**

The Visitor Center is now open Friday and Saturday, 10:00 a.m. to 4:00 p.m. through December 16th. For the month of January, 2001, the Center will be open by appointment only. Visitors should call ahead for appointment arrangements. Beginning February 2, 2001, the Center will reopen on Fridays and Saturdays.



## NATURAL RESOURCE MANAGEMENT

In cooperation with the Bureau of Land Management (BLM), a segment of the Regional Trail system was constructed this fall with funds from two different grants. This section of the



Regional Trail system will eventually extend from the Monument's north boundary, down river to the area near the Bliss Bridge. A brochure will be produced once the trail is complete.



## EDUCATION

Our education programs continue to increase. This spring, we provided programs to over 1,000 students from 23 different schools. We also presented programs to a variety of college students. Any teachers interested in bringing their class to the Fossil Beds, or having a ranger come to your class, should contact Judi Hart at (208) 837-4793. All programs are free!



Can't come to the Fossil Beds? No problem...have the Fossil Beds come to your classroom, with our Traveling Trunks! These marvelous tools include curriculum guides, books, videos, casts of horse skulls, geology samples, and so much



more. And, they are free to use; all you do is pay for the return shipping. We have trunks for 4-6<sup>th</sup> grade and 7-12<sup>th</sup> grade available. For more information, call Judi Hart at (208) 837-4793.



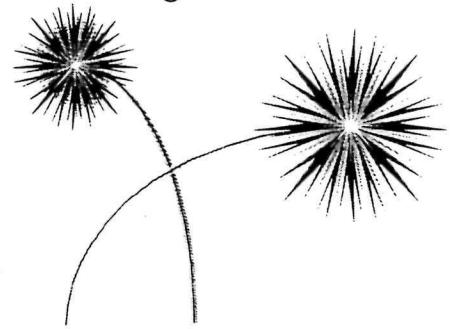
"The elements of primary interest in these parks are of many types. They include some of the greatest known illustrations of magnitude, power, beauty and antiquity."

John C. Merriam, from Quotes: Conservation, Parks, Natural Beauty, DOI, 1966

This newsletter is printed on recycled paper.

## **GOOD-BYE and GOOD LUCK**

It is with great sadness that we say good-bye to the Monument's paleontologist, Dr. Greg McDonald. The good news is that Greg will be the paleontology coordinator for all of the National Park Service's fossil programs. Greg's new position is located in the Geologic Resources Division in Denver.



More good news! Greg will still be coordinating with the Hagerman Fossil Beds, as well as sharing his wealth of knowledge and expertise with other fossil parks.

**All the best, Greg!**

