

Swallowtails (*Papilioninae*)

Eastern Tiger Swallowtail

Flight:

April - Aug

Size:

3 5/8 to 6 1/2 inches

Adult food:

variety, wild cherry and lilac



Whites (*Pieridae*)

Checkered White

Flight:

April - Oct

Size:

1 1/2 to 2 1/2 inches

Adult food:

hedge mustards, composites, alfalfa



Male Checkered White

Flight:

April - Oct

Size:

1 1/2 to 2 1/2 inches

Adult food:

hedge mustards, alfalfa composites



All data used in this brochure was obtained from

The Butterflies of Iowa

by Dennis W. Schlicht, John C. Downey and Jeffrey C. Nekola

Personal Communications with University of Nebraska-Lincoln butterfly expert Steve Spomer

and

<http://www.butterfliesandmoths.org>

Gossamer-Winged (*Theclinae*)

Gray Hairstreak

Flight:

April - June

Size:

7/8 to 1 3/8 inches

Adult food:

dogbane, milkweed, goldenrod, sweet clover, mint,



Gray Copper

Flight:

June - July

Size:

1 1/6 to 1 1/2 inches

Adult food:

meadowsweet, milkweeds, New Jersey tea, thistles



Spring Azure

Flight:

April - Sept.

Size:

7/8 to 1 3/8 inches

Adult food:

New Jersey tea, dogbane, blackberry, privet, common milkweed



Hickory Hairstreak

Flight:

June - July

Size:

1 1/8 to 1 3/8 inches

Adult food:

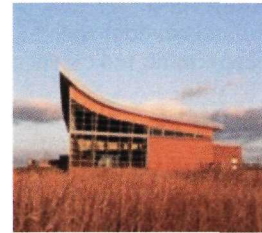
common milkweed, dogbane, New Jersey tea, staghorn sumac, white sweet clover



All butterflies featured in this brochure were photographed at Homestead National Monument of America by 2010 Summer Student Conservation Association intern Katherine Johnson.

Free Land! The Homestead Act of 1862 and Homestead NM of America

On March 16, 1936 Congress created a new unit in the National Park Service on the site of the Daniel Freeman homestead. Three days later, President Franklin D. Roosevelt signed the bill into law and Homestead National Monument of America became "an appropriate monument . . . [to] the hardships and the pioneer life through which the early settlers passed in the settlement, cultivation and civilization of the Great West."



Homestead National Monument of America

8523 W. State Highway 4
Beatrice, NE 68310
402-223-3514

<http://www.nps.gov/home/>

Did you Know?

Butterflies range in size from a tiny 1/8 inch to a huge almost 12 inches.

Butterflies can see red, green and yellow.

Many butterflies can taste with their feet to find out whether the leaf they sit on is good to lay eggs on to be their caterpillar's food or not.

There are about 24,000 species of butterflies.

Butterflies and insects have their skeletons on the outside of their bodies, called the exoskeleton. This protects the insect and keeps water inside their bodies so they don't dry out.

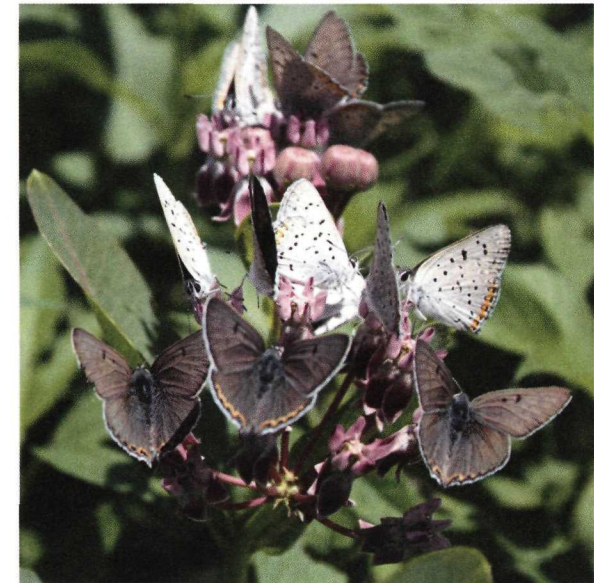
All butterflies have six legs and feet. In some species such as the **monarch**, the front pair of legs remains tucked under the body most of the time, and are difficult to see.

National Park Service
U.S. Department of the Interior

Homestead National Monument of America
Beatrice, Nebraska



Native Butterflies Homestead National Monument of America



Multiple Gray Copper Butterflies bask on a Prairie Milkweed

Butterflies are just one of the many delicate details of nature that not only bring joy to those who encounter them but also shape the environment by their feeding habits. As a caterpillar many of the species are destructive to vegetation while many of the adults help to pollenate the flowers ensuring seeds will develop to start the next generation.

Enjoy searching for and studying the butterflies of Homestead. If you get a picture of a butterfly you are encouraged to upload the picture to www.inaturalist.org so managers can have a better idea of what species are present.

Sulphurs (*Pieridae*)

Little Yellow Sulphur Flight:
June - Sept.



Size:
1 1/4 to 1 3/4 inches
Adult food:
asters, goldenrods

Clouded Sulphur Flight:
April - Oct



Size:
1 1/2 to 2 3/4 inches
Adult food:
flower nectar of many plants

Dainty Sulphur Flight:
May - July



Size:
3/4 to 1 1/4 inches
Adult food:
asters, wild marigold, rabbit-brush, others

Orange Sulphur Flight:
May - Nov



Size:
1 3/8 to 2 3/4 inches
Adult food:
dandelion, milkweed, goldenrod, asters

Brush-footed (*Nymphalidae*)

Great Spangled Fritillary Flight:
May - Sept



Size:
2 1/2 to 4 inches
Adult food:
milkweed, thistle, bergamot, coneflower

Regal Fritillary Flight:
June - Sept



Size:
2 5/8 to 4 1/8 inches
Adult food:
milkweed, dogbane, peppermint, red clover

Variiegated Fritillary Flight:
April - Sept



Size:
1 3/4 to 3 1/8 inches
Adult food:
milkweed, dogbane, red clover, peppermint,

Silvery Checkerspot Flight:
April - Oct



Size:
1 1/4 to 1 3/4 inches
Adult food:
milkweed

Gorgone Check- Flight:
April - Aug



Size:
1 1/4 to 1 3/4 inches
Adult food:
yellow flowers

Pearl Crescent Flight:
June - July



Size:
1 7/16 inches to 2 inches
Adult food:
flower nectar

Monarch



Flight:
May - Aug
Size:
3 3/8 to 4 7/8 inches
Adult food:
milkweed

Red Admiral Flight:
March - Sept



Size:
1 3/4 to 3 inches
Adult food:
milkweed, red clover, aster, alfalfa

Common Buckeye Flight:
May - Oct



Size:
1 5/8 to 2 3/4 inches
Adult food:
aster, dogbane, peppermint, chicory

Question Mark Flight:
April - Oct



Size:
1 3/4 to 2 1/2 inches
Adult food:
rotting fruit, tree sap

Painted Lady Flight:
April - Aug



Size:
2 to 2 7/8 inches
Adult food:
thistles, aster, red clover, milkweed

Skippers (*Hesperiidae*)

Tawny-edged Skipper Flight:
June - Aug



Size:
1 to 1 11/16 inches
Adult food:
milkweeds, thistle

Common Checkered Skipper Flight:
April - Oct



Size:
1 to 1 1/2 inches
Adult food:
asters, red clover

Common Sootywing Flight:
May - Sept



Size:
1 to 1 5/6 inches
Adult food:
dogbane white clover, milkweed, peppermint

Silver Spotted Skipper Flight:
May - July



Size:
1 3/4 to 2 5/8 inches
Adult food:
milkweed, red clover, buttonbush, blazing star, and thistles