

UNITED STATES  
DEPARTMENT OF THE INTERIOR  
RAY LYMAN WILBUR, SECRETARY  
NATIONAL PARK SERVICE  
HORACE M. ALBRIGHT, DIRECTOR

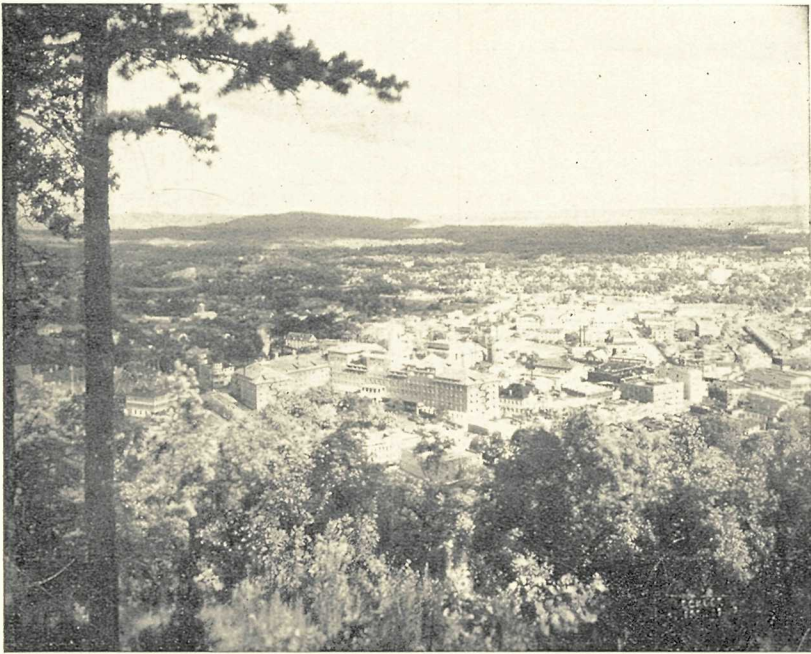


CIRCULAR OF GENERAL INFORMATION REGARDING

# HOT SPRINGS

## NATIONAL PARK

### ARKANSAS



PORTION OF CITY OF HOT SPRINGS  
Taken from West Mountain



OPEN ALL THE YEAR

# THE NATIONAL PARKS AT A GLANCE

[Number, 21; total area, 12,118 square miles]

Name of park	Location	Area in square miles	Distinctive characteristics
Acadia..... 1919	Maine coast.....	16	The group of granite mountains upon Mount Desert Island and also bold point on opposite mainland across Frenchmans Bay—Formerly called the Lafayette National Park.
Bryce Canyon..... 1928	Southwestern Utah....	23	Box canyon filled with countless array of fantastically eroded pinnacles—Best exhibit of vivid coloring of earth's materials.
Crater Lake..... 1902	Southwestern Oregon..	249	Lake of extraordinary blue in crater of extinct volcano—Sides 1,000 feet high—Interesting lava formations—Fine fishing.
General Grant..... 1890	Middle eastern California.	4	Created to preserve the celebrated General Grant Tree, 40.3 feet in diameter—31 miles by trail from Sequoia National Park.
Glacier..... 1910	Northwestern Montana.	1,534	Rugged mountain region of unsurpassed alpine character—250 glacier-fed lakes of romantic beauty—60 small glaciers—Precipices thousands of feet deep—Almost sensational scenery of marked individuality—Fine trout fishing.
Grand Canyon..... 1919	North central Arizona.	1,009	The greatest example of erosion and the most sublime spectacle in the world.
Grand Teton..... 1929	Northwestern Wyoming.	150	Includes most spectacular portion of Teton Mountains, an uplift of unusual grandeur.
Hawaii..... 1916	Hawaii.....	245	Interesting volcanic areas—Kilauea and Mauna Loa, active volcanoes on the island of Hawaii; Haleakala, a huge extinct volcano on the island of Maui.
Hot Springs..... 1921	Middle Arkansas.....	1½	46 hot springs said to possess healing properties—Many hotels and boarding houses—19 bathhouses under Government supervision. Reserved by Congress in 1832 as the Hot Springs Reservation to prevent exploitation of hot waters.
Lassen Volcanic..... 1916	Northern California....	163	Only active volcano in United States proper—Lassen Peak, 10,433 feet—Cinder cone, 6,913 feet—Hot springs—Mud geysers.
Mesa Verde..... 1906	Southwestern Colorado.	80	Most notable and best preserved prehistoric cliff dwellings in United States, if not in the world.
Mount McKinley..... 1917	South central Alaska....	2,645	Highest mountain in North America—Rises higher above surrounding country than any other mountain in the world.
Mount Rainier..... 1899	West central Washington.	325	Largest accessible single peak glacier system; 28 glaciers, some of large size; 48 square miles of glacier, 50 to 500 feet thick—Wonderful subalpine wild-flower fields.
Platt..... 1902	Southern Oklahoma....	1½	Sulphur and other springs possessing medicinal value.
Rocky Mountain..... 1915	North middle Colorado.	378	Heart of the Rockies—Snowy range, peaks 11,000 to 14,255 feet altitude—Remarkable records of glacial period.
Sequoia..... 1890	Middle eastern California.	604	The Big Tree National Park—Scores of sequoias 20 to 30 feet in diameter, thousands over 10 feet in diameter, General Sherman Tree, 37.3 feet in diameter and 273.9 feet high—Towering mountain ranges—Startling precipices—Mount Whitney and Kern River country.
Sullys Hill..... 1904	North Dakota.....	1½	Small park with woods, streams, and a lake—Is a wild-animal preserve.
Wind Cave..... 1903	South Dakota.....	17	Cavern having several miles of galleries and numerous chambers containing peculiar formations.
Yellowstone..... 1872	Northwestern Wyoming, southwestern Montana, and northeastern Idaho.	3,426	More geysers than in all rest of world together—Boiling springs—Mud volcanoes—Petrified forests—Grand Canyon of the Yellowstone, remarkable for gorgeous coloring—Large lakes—Many large streams and waterfalls—Vast wilderness, one of the greatest wild bird and animal preserves in the world—Exceptional trout fishing.
Yosemite..... 1890	Middle eastern California.	1,126	Valley of world-famed beauty—Lofty cliffs—Romantic vistas—Many waterfalls of extraordinary height—3 groves of Big Trees—High Sierra—Waterwheel Falls—Good trout fishing.
Zion..... 1919	Southwestern Utah....	120	Magnificent gorge (Zion Canyon), depth from 1,500 to 2,500 feet, with precipitous walls—Of great beauty and scenic interest.

## CONTENTS

	Page
Legends and history.....	1
Our first national park.....	1
The city of Hot Springs.....	2
The pay bathhouses.....	3
The Army and Navy General Hospital.....	4
The Government free baths.....	4
The character and action of the waters.....	5
Physicians.....	7
Auto camp.....	8
How to reach the Hot Springs National Park:	
By railroad.....	9
By automobile.....	9
Map.....	9
Literature.....	9
Rules and regulations for the government of the Hot Springs National Park:	
General regulations.....	11
Rules and regulations governing bathhouses.....	13
Rules for the government of the Federal Registration Board.....	20
Rules and regulations for the government of the free bathhouse.....	23
Rules and regulations governing bath attendants in the pay bathhouses.....	24
Rules and regulations governing masseurs, masseuses, and mercury rubbers in all bathhouses.....	26
Automobile and motor cycle regulations.....	27
Rules and regulations for the government of the public camp grounds.....	30

## MAPS

Map of Hot Springs National Park and portion of city showing location of bathhouses and public buildings.....	14, 15
Map showing railroad connections to Hot Springs National Park.....	8
Map showing automobile roads leading to Hot Springs National Park.....	28

98418°—30—1

# The National Parks Portfolio

(FIFTH EDITION)

Bound securely  
in cloth

One dollar

A presentation of the national parks and national monuments in picture. The selection is from the best work of many photographers, professional and amateur. It contains nine chapters descriptive each of a national park, and one larger chapter devoted to other parks and monuments. 270 pages, including 310 illustrations.

¶ Sent postpaid, upon receipt of price in cash or money order, by the Superintendent of Documents, Government Printing Office, Washington, D. C.

II

## THE HOT SPRINGS NATIONAL PARK

The hot springs, 46 in number, are situated at the city of Hot Springs, near the center of the State of Arkansas, 50 miles southwest of Little Rock. In addition to the hot springs there are many cold springs furnishing palatable waters extensively used both in the treatment of disease and as table waters.

### LEGENDS AND HISTORY

The hot springs were probably visited in 1541 by De Soto, who died the following spring on the Mississippi, about 100 miles away. According to traditions the healing properties of the springs were known to the Indians long before the advent of the Spaniards. There is a tale that the various tribes battled from time to time for control of the hot waters, in which they believed the "Great Spirit" to be ever present, but that finally a truce was declared under which their benefits were extended to the sick of all tribes.

It is believed that the earliest white settlement was made about the year 1800. Dunbar and Hunter, who visited the place in December, 1804, found an open log cabin and a few huts built of split boards which had been erected by persons resorting to the springs in the hope of regaining their health. Manuel Prudhomme built a cabin there in 1807 and was joined the same year by John Perciful and Isaac Cates.

### OUR FIRST NATIONAL PARK

In 1832 the hot springs and the four sections of land surrounding them were by act of Congress set aside for the future disposal of the United States, not to be entered, located, or appropriated for any other purpose whatever, thus making the first national park reservation of the country and preserving the waters of the springs in perpetuity free from monopoly and commercial exploitation. In 1921, by act of Congress, its name was changed from the Hot Springs Reservation to the Hot Springs National Park.

The Hot Springs National Park contains 928 acres, and includes Hot Springs Mountain, North Mountain, West Mountain, Sugar-Loaf Mountain and Whittington Lake Park. The springs are all grouped about the base of Hot Springs Mountain, their aggregate flow being 851,308 gallons per day. The hot water is supplied to the various bathhouses, the receipts from this source being deposited in

the United States Treasury. There are more than 12 miles of well-built roads and 18 miles of trails and footpaths over the mountains.

The Hot Springs National Park is under the control and supervision of the Director of the National Park Service. The officer in immediate charge is the superintendent, Dr. Hugh de Valin, whose office address is Hot Springs, Ark. The park is open throughout the year.

The superintendent has charge of all general matters connected with the Government's interests, enforces the rules and regulations of the department, has charge of sanitation, hydrotherapy, the bathing of patients, the Government free bathhouse for the indigent, the instruction and supervision of bath attendants, and the determination as to their fitness for employment, and has supervision over the auto camp.

#### THE CITY OF HOT SPRINGS

The city of Hot Springs is a municipality governed under State and municipal law. The National Park Service exercises no control or supervision over any matters connected with the city.

The city has extended beyond the narrow valley in which the springs are located and spreads out over the open plain to the south and east. It is supplied with all the public-utility services of the larger cities. There are churches of every denomination, public and private schools, hospitals and sanatoria, theaters, and other places of amusement. The resident population is about 16,000.

There are many hotels, the largest affording accommodations for 1,000 guests, and several hundred boarding houses ranging in price from \$7 a week up. Cottages and apartments for light housekeeping, furnished or unfurnished, can be rented from \$20 a month up. The cost of living is about the same as in average cities of like size.

Lists of hotels and boarding houses can be obtained at the Chamber of Commerce, which is located next to the post office, and inquiries of a general nature not related to the administration of the baths will be answered by its secretary.

The climate is good throughout the year. The elevation of the city is 600 feet, and that of the surrounding hills about 1,200 feet above the level of the sea.

In the earlier days Hot Springs was exclusively a summer resort, the hotels being closed from October to March. In later years, however, owing to the number who come during the winter months to escape the cold of the North, the resort is patronized throughout the year. It is also becoming more and more a place for rest and recreation for the business and professional men, and the two golf courses, one of which is a 36-hole course and considered one of the best in the South, are extensively used by the visitors.

#### THE PAY BATHHOUSES

There are 19 pay bathhouses operated under rules and regulations approved by the Secretary of the Interior. Nine are on the park at the base of Hot Springs Mountain, constituting what is known as "Bathhouse Row," and 10 are located at various points in the city. Nine are in connection with hotels, hospitals, or sanatoria. The water is the same in all, but the prices charged for the baths vary between the different houses in accordance with the equipment and accommodations furnished. The rates are fixed in each instance by the Secretary of the Interior. The charges for the services of the attendants are the same in all, and include all the necessities of the baths except furnishing towels, mitts, blankets, and bath robes, laundering bath robes and blankets, rubbing mercury, and handling helpless invalids.

Any dissatisfaction relative to the administration of the baths or the treatment of patients should be brought to the attention of the superintendent, who will investigate the complaint and adjust any differences.

Bath attendants, under the rules and regulations for the government of the bathhouses receiving water from the Hot Springs National Park, are allowed to charge for their services not to exceed 20 cents for a single bath, or \$4 per course of 21 baths, to be collected for the attendant by the bathhouse manager and properly accounted for by him to the attendant.

*Scale of rates for baths at different bathhouses receiving water from the Hot Springs National Park*

[Including fee of bath attendant, \$0.20 for single bath and \$4 for a course of 21 baths]

Bathhouse	Single bath	5 baths	10 baths	21 baths
Arlington.....	\$1.40	\$6.60	\$12.60	\$24.00
Fordyce.....	1.35	6.35	12.10	23.00
Buckstaff.....	1.25	5.85	11.10	21.00
Eastman.....	1.25	5.85	11.10	21.00
Maurice.....	1.25	5.85	11.10	21.00
La Mar.....	1.20	5.60	10.60	20.00
Majestic.....	1.20	5.60	10.60	20.00
Quapaw.....	1.20	5.60	10.60	20.00
Hale.....	1.15	5.35	10.10	19.00
Imperial.....	1.15	5.35	10.10	19.00
Moody.....	1.15	5.35	10.10	19.00
Ozark.....	1.15	5.35	10.10	19.00
St. Joseph's Infirmary.....	1.15	5.35	10.10	19.00
Superior.....	1.15	5.35	10.10	19.00
Ozark Sanatorium.....	1.10	5.10	9.60	18.00
Rockafellow.....	1.10	5.10	9.60	18.00
Alhambra.....	1.05	4.85	9.10	17.00
Pythian (colored).....	1.00	4.60	8.60	16.00
Woodmen of Union (colored).....	1.00	4.60	8.60	16.00

Bath tickets are redeemable according to the redemption scale for baths fixed by the department, a copy of which is posted in each bathhouse.

### THE ARMY AND NAVY GENERAL HOSPITAL

The Army and Navy General Hospital is also supplied with water from the springs. It is administered by the War Department for the benefit of officers and enlisted men of the military and naval service of the United States, cadets at the United States Military and Naval Academies, officers of the Revenue Cutter Service, now forming part of the Coast Guard, officers of the Public Health Service, and honorably discharged soldiers and sailors of the Regular and Volunteer Army and Navy of the United States, who are suffering from such diseases as the waters of the hot springs of Arkansas have an established reputation in benefiting.

Admission to this hospital of all such cases regardless of their severity is not, however, contemplated. Its facilities will not be extended to mild and transient cases which should yield to ordinary treatment, but are reserved for those of a serious and obstinate character, which, though resisting ordinary methods of relief, promise a rapid and permanent recovery from the use of the waters of the springs.

In the case of veterans whose service was rendered since 1897, application for admission to this institution should be made to the Veterans' Bureau, Washington, D. C., or to a district office of the bureau. The nearest district office to the hospital is at Little Rock, Ark. In all other cases applications should be submitted to the Surgeon General, U. S. Army, Washington, D. C.

### THE GOVERNMENT FREE BATHS

The Government free bathhouse for the indigent was established pursuant to act of Congress of December 16, 1878. The number of baths given to the poor during the fiscal year 1929 was 102,882.

The act of March 2, 1911, provides that an applicant for free baths shall be required to make oath that he is without and unable to obtain means to pay for baths, and a false oath as to his financial condition makes him guilty of a misdemeanor and subjects him, upon conviction thereof, to a fine of not to exceed \$25, or 30 days' imprisonment, or both.

Tickets are issued only to those who, after examination, are found to be suffering from diseases that may reasonably be expected to be benefited by the baths. Children are not allowed in the bathhouse unless they themselves are patients.

The Government free bathhouse is a modern concrete building fully equipped for bathing large numbers of people under sanitary conditions. In connection with the bathhouse the United States Public Health Service, with the cooperation of the National Park

Service, is operating a clinic for the examination and treatment of indigents taking the free baths. All applicants for free baths and treatment for disease must be prepared to provide and pay for their own board and lodging and have return railroad fare. There are no hospitals in the city of Hot Springs to which patients can be admitted free of charge, nor any funds available from which relief can be afforded or railroad transportation furnished. This statement appears to be necessary, as many destitute invalids come each year from other and distant States in the belief that the Government maintains a public institution at which they will be cared for free of charge.

### THE CHARACTER AND ACTION OF THE WATERS

The source of the heat is believed to be great masses of igneous rock intruded in the earth's crust by volcanic agencies. Deep-seated waters converted into vapors by contact with this heated mass probably ascend through fissures toward the surface where they meet cold springs, which are heated by the vapors.

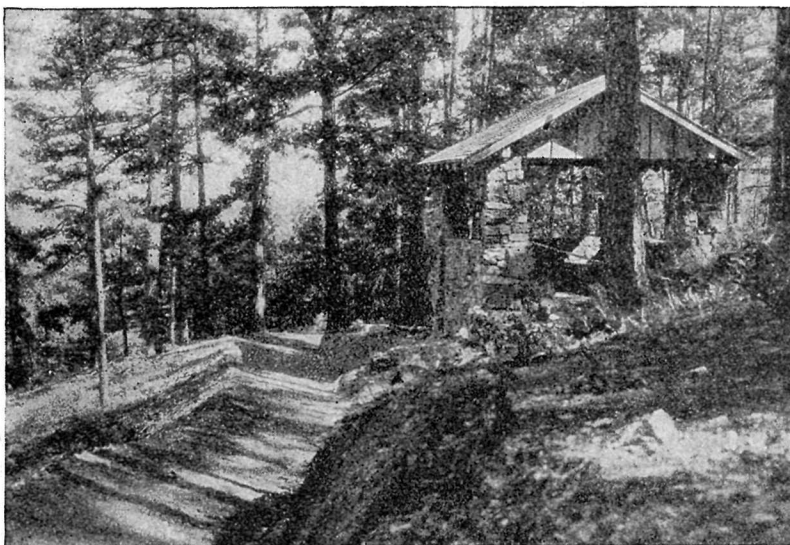
The waters of 44 hot springs were analyzed by J. K. Haywood in 1901, and the complete results were printed in the publication entitled "Analyses of the Waters of the Hot Springs of Arkansas," which could formerly be purchased from the Superintendent of Documents, Government Printing Office, Washington, D. C. The edition of this publication is now exhausted, but copies undoubtedly are available for reference in most public libraries in the larger cities. With the following exceptions, the hot waters are practically alike in concentration and composition. The waters range in temperature from 102° to 147° F., most of them having a temperature of 135° to 145° F. Little Geyser Spring is nearly cold and contains only 170 parts per million of mineral matter besides having slightly higher percentages of silica and sulphate and slightly lower percentages of calcium and bicarbonate than the average. Superior Spring (North) contains only 231 parts per million of mineral matter but is otherwise normal. Tunnel Spring contains only 259 parts of mineral matter and has a slightly higher percentage of silica and slightly lower percentages of calcium and bicarbonate than the average. Stevens Springs and Mud Spring have somewhat higher percentages of sulphate. Reservoir Spring contains 310 parts of mineral matter and has higher percentages of sulphate, potassium, and sodium, and lower percentages of silica, bicarbonate, and magnesium than the average. These differences in composition are too small to affect the therapeutic value of the waters. The waters of the other springs, ranging in mineral content from 272 to 297 parts per million, correspond closely in their chief constituents to the following analysis, which is

that of Big Iron Spring, with the figures rounded off for convenience:

*Approximate chemical composition of the hot spring waters at Hot Springs, Ark.*

Constituents	Parts per million	Percentage of total	Constituents	Parts per million	Percentage of total
Silica (SiO <sub>2</sub> )	46	16.0	Sulphate radicle (SO <sub>4</sub> )	7.8	2.7
Iron and aluminum (Fe+Al)	.2	.1	Nitrate radicle (NO <sub>3</sub> )	.4	.2
Manganese (Mn)	.3	.1	Nitrite radicle (NO <sub>2</sub> )	.002	.0
Calcium (Ca)	47	16.5	Phosphate radicle (PO <sub>4</sub> )	.05	.0
Magnesium (Mg)	5.1	1.8	Borate radicle (BO <sub>2</sub> )	1.3	.4
Barium (Ba)	Trace.	.0	Arsenate radicle (AsO <sub>4</sub> )	None.	.0
Strontium (Sr)	Trace.	.0	Chlorine (Cl)	2.5	.9
Sodium (Na)	4.8	1.7	Bromine (Br)	Trace.	.0
Potassium (K)	1.6	.6	Iodine (I)	Trace.	.0
Lithium (Li)	Trace.	.0	Fluorine (F)	None.	.0
Ammonium (NH <sub>4</sub> )	.04	.0			
Bicarbonate radicle (HCO <sub>3</sub> )	168	59.0		285	

Gases in cubic centimeters per liter at 0° C. and 760 millimeters pressure: Nitrogen (N), 8.8; oxygen (O), 3.8; free carbon dioxide (CO<sub>2</sub>), 6.9; hydrogen sulphide (H<sub>2</sub>S), none.



SHELTER HOUSE AND TRAIL ABOVE IRON SPRINGS, HOT SPRINGS MOUNTAIN

The park affords opportunities for out-of-door life, driving, riding, and hill climbing. Much importance is attached by local physicians to the possibilities for out-of-door life.

The baths are contraindicated in tuberculosis of the throat and lungs, in all forms of cancer, and in certain organic heart conditions.

It is a great mistake for winter visitors at Hot Springs to return home with the first coming of spring since results from the baths are obtained during all months of the year. People remaining in Hot Springs beyond the 1st of April should have their summer clothing, as the average temperature is from 65 to 85 degrees.

### PHYSICIANS

The only physicians allowed to prescribe the waters of the hot springs are those licensed practitioners of the State of Arkansas who have been examined by a Federal board of medical examiners appointed by the Secretary of the Interior. Visitors are warned that physicians who have not passed the Federal board and been registered in the office of the superintendent are not permitted to make use of the baths in the treatment of their patients. This rule is for the protection of visitors, who, if they desire the baths, should before employing a physician procure from the superintendent of the reservation a list of the qualified practitioners.

While the baths may be taken without the advice of a physician by procuring a permit at any of the bathhouses receiving water from the hot springs on the park, this practice is not recommended. Patients who assume to determine the nature of their ailments and to prescribe for themselves often fail to obtain the desired relief. The waters are not beneficial in all diseases and in some are harmful. In many ailments the baths will not afford material benefit unless taken in connection with proper medicines prescribed by physicians. It is a useless expenditure of time and money to take the baths for a disease that will not be benefited by them.

Physicians' fees are from \$25 a month up, according to the treatment required.

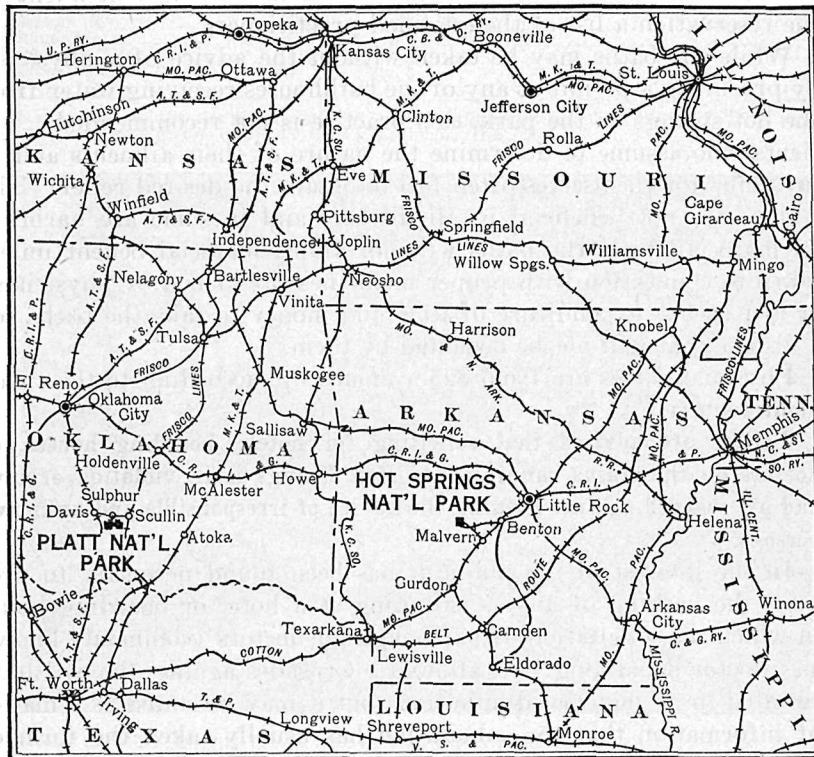
Visitors are advised that soliciting for hotels, boarding houses, or doctors on the trains running into Hot Springs is in violation of law, and are warned against heeding the advice of irresponsible and unknown persons.

In the interest of the public it has been found necessary to prohibit the bathing of anyone stopping at a hotel or boarding house in which the solicitation of patronage for doctors (commonly known as "doctor drumming") is allowed. Crusades against the evil have resulted in its material diminution; but it may be stated as a matter of information that the solicitation has usually taken the form of advising the patient that the doctor to whom he has been recommended by a friend at home is out of town, but that Dr. X is as good a man and will treat him for less money. The drummers have commonly posed as greatly benefited and grateful patients of the doctors who employed them. Doctors who have made use of agents to induce patients to take treatment from them have usually divided their fees with the solicitors or drummers.

The moral responsibility of good citizenship demands that visitors should make known to the superintendent of the park any instance of soliciting for doctors, thus effectively aiding the service in eliminating an obnoxious practice and insuring to themselves the full benefits of proper treatment at this resort.

#### AUTO CAMP

The Government operates a modern tourist camp for automobile tourists in the Gorge, a beautiful valley at the foot of the eastern



MAP SHOWING RAILROAD CONNECTIONS TO HOT SPRINGS NATIONAL PARK

slope of Hot Springs Mountain. Modern camping facilities, an abundant supply of pure water, and the unsurpassed scenic beauty surrounding it make this one of the most attractive camps available to the public. A large swimming pool fed by fresh running water is located in the heart of the camp site, with dressing rooms available for both men and women. The camp is 2 miles distant from the center of the city of Hot Springs.

### HOW TO REACH THE HOT SPRINGS NATIONAL PARK

#### BY RAILROAD

The railroads running into Hot Springs are the Chicago, Rock Island & Pacific and the Missouri Pacific. Through sleeping cars are operated daily between Chicago, Memphis, and Hot Springs via the Illinois Central and the Chicago, Rock Island & Pacific railroads. Through sleeping cars are operated daily via the Missouri Pacific between Memphis, New Orleans, St. Louis, Omaha, Kansas City, and Hot Springs and between Chicago and Hot Springs via the Chicago & Alton and Wabash Railroads north of St. Louis in connection with the Missouri Pacific south thereof.

Passengers en route to other destinations will find stop-over privileges available on both one-way and round-trip tickets for the purpose of making side trips to Hot Springs.

For further information regarding railroad fares, service, etc., apply to railroad ticket agents or L. M. Allen, passenger traffic manager, Chicago, Rock Island & Pacific Railroad, Chicago; A. D. Bell, passenger traffic manager, Missouri Pacific Railroad, St. Louis, Mo.; or D. W. Longstreet, traffic manager, Illinois Central Railroad, Chicago.

#### BY AUTOMOBILE

Hot Springs is also easily reached by automobile over good roads from practically all points in the United States. It is on the direct line of the Bankhead Highway reaching from Washington, D. C., to San Diego, Calif.

#### MAP

A topographic map showing Hot Springs National Park and vicinity may be purchased from the Director of the Geological Survey, Washington, D. C. Scale, 1 mile to the inch. Price, 10 cents.

#### LITERATURE

#### GOVERNMENT PUBLICATIONS

Government publications on Hot Springs National Park may be obtained as indicated below. Separate communications should be addressed to the officers mentioned.

#### DISTRIBUTED FREE BY THE NATIONAL PARK SERVICE

The following publications may be obtained free on written application to the Director of the National Park Service or by personal application to the office of the superintendent of the park:

#### Map of National Parks and Monuments.

Shows location of all the national parks and monuments administered by the National Park Service and all railroad routes to the reservations.

Glimpses of Our National Parks. 65 pages, including 23 illustrations.

Contains descriptions of the most important features of the principal national parks.

SOLD BY THE SUPERINTENDENT OF DOCUMENTS

The following publication may be obtained from the Superintendent of Documents, Government Printing Office, Washington, D. C., postage prepaid, upon receipt of \$1. Remittances should be made by money order or in cash.

National Parks Portfolio, by Robert Sterling Yard. 270 pages, including 310 illustrations. Bound securely in cloth.

Contains nine chapters, each descriptive of a national park, and one larger chapter devoted to other national parks and monuments.

SOLD BY DIRECTOR OF UNITED STATES GEOLOGICAL SURVEY

Hot Springs folio, sold by Director of United States Geological Survey. Contains information regarding the geology of the Hot Springs region. Price, 25 cents.

#### OTHER NATIONAL PARKS

Rules and Regulations similar to this containing information regarding the national parks listed below may be obtained free of charge by writing to the Director of the National Park Service, Washington, D. C.

Acadia National Park.  
Crater Lake National Park.  
Glacier National Park.  
Grand Canyon National Park.  
Grand Teton National Park.  
Hawaii National Park.  
Lassen Volcanic National Park.  
Mesa Verde National Park.  
Mount Rainier National Park.

Mount McKinley National Park.  
Rocky Mountain National Park.  
Sequoia and General Grant National Parks.  
Wind Cave National Park.  
Yellowstone National Park.  
Yosemite National Park.  
Zion and Bryce Canyon National Parks.

#### NATIONAL MONUMENTS

An illustrated publication entitled "Glimpses of Our National Monuments," containing short descriptions regarding each of the national monuments administered by the Department of the Interior, may also be obtained free of charge upon application to the Director of the National Park Service.

## RULES AND REGULATIONS FOR THE GOVERNMENT OF THE HOT SPRINGS NATIONAL PARK

The following rules and regulations for the government of the Hot Springs National Park are hereby established and made public pursuant to authority conferred by the act of Congress approved April 20, 1904 (33 Stat. 187), as amended March 2, 1907 (34 Stat. 1218), the act approved August 25, 1916 (39 Stat. 535), as amended June 2, 1920 (41 Stat. 732), the act approved March 4, 1921 (41 Stat. 1407), and the act approved September 18, 1922 (42 Stat. 847).

#### GENERAL REGULATIONS

1. *Preservation of natural features and curiosities.*—The destruction, injury, defacement, or disturbance in any way of buildings, signs, equipment, or other property within the park, of trees, flowers, or other vegetation, rocks or minerals, animals, bird or other life is strictly prohibited.

2. *Camping.*—Camping in the park is restricted to the public camp grounds.

Picnic grounds in the park must be thoroughly cleaned, and cans, bottles, papers, and other débris shall be placed in garbage receptacles provided for the purpose.

3. *Fires.*—Fires constitute one of the greatest perils to a park. They shall not be kindled except with the express permission of the superintendent or his representatives, and in designated localities; they shall be lighted only when necessary, and when no longer needed shall be completely extinguished, all embers and ash beds being smothered with earth or water so that no possibility remains of their again becoming alive.

No lighted match, cigar, or cigarette shall be dropped in grass, twigs, leaves, or tree mold, or thrown away unextinguished.

4. *Hunting.*—The park is a sanctuary for wild life of every sort, and hunting, killing, wounding, capturing, trapping, or frightening any bird or wild animal in the park is strictly prohibited.

5. *Private operations.*—No person, firm, or corporation shall reside permanently, engage in any business, or erect buildings in the park without permission in writing from the Director of the National Park Service, Washington, D. C. Applications for such permission



may be addressed to the director through the superintendent of the park.

6. *Cameras.*—Still and motion picture cameras may be freely used in the parks for general scenic purposes. For the filming of motion pictures requiring the use of artificial or special settings, or involving the performance of a professional cast, permission must first be obtained from the superintendent of the park.

7. *Gambling.*—Gambling in any form, or the operation of gambling devices, whether for merchandise or otherwise, is prohibited.

8. *Drumming.*—Drumming and soliciting within the park for any physician, surgeon, or any person publicly professing to relieve, cure, or heal, or for any bathhouse receiving water from the Hot Springs National Park is strictly prohibited.

9. *Vending.*—Vending, peddling, or hawking any goods, wares, or merchandise, or soliciting for any person, firm, or corporation within the park is strictly prohibited.

10. *Advertisements.*—Private notices or advertisements shall not be posted or displayed within the park excepting such as the park superintendent deems necessary for the convenience and guidance of the public.

11. *Authorized operators.*—All persons, firms, or corporations holding franchises in the park shall keep the grounds used by them properly policed and shall maintain the premises in a sanitary condition to the satisfaction of the superintendent. No operator shall retain in his employment a person whose presence in the park may be deemed by the superintendent subversive of good order and management of the park.

12. *Complaints.*—All complaints by visitors and others as to service, etc., rendered in the park should be made to the superintendent in writing before the complainant leaves the park. Oral complaints will be heard daily during office hours.

13. *Miscellaneous.*—The possession of liquor on the park grounds is in violation of Federal and State statutes.

14. *Fines and penalties.*—Persons who render themselves obnoxious by disorderly conduct or bad behavior shall be subjected to the punishment hereinafter prescribed for violation of the foregoing regulations or they may be summarily removed from the park by the superintendent.

Any person who violates any of the foregoing regulations shall be deemed guilty of a misdemeanor and shall be subject to a fine of not more than \$500 or imprisonment not exceeding six months, or both, and be adjudged to pay all costs of the proceedings.

15. *Lost and found articles.*—Persons finding lost articles should deposit them at the office of the superintendent, leaving their own names and addresses, so that if not claimed by owners within 60 days articles may be turned over to those who found them.

#### RULES AND REGULATIONS FOR THE GOVERNMENT OF ALL BATHHOUSES RECEIVING HOT WATER FROM THE HOT SPRINGS NATIONAL PARK

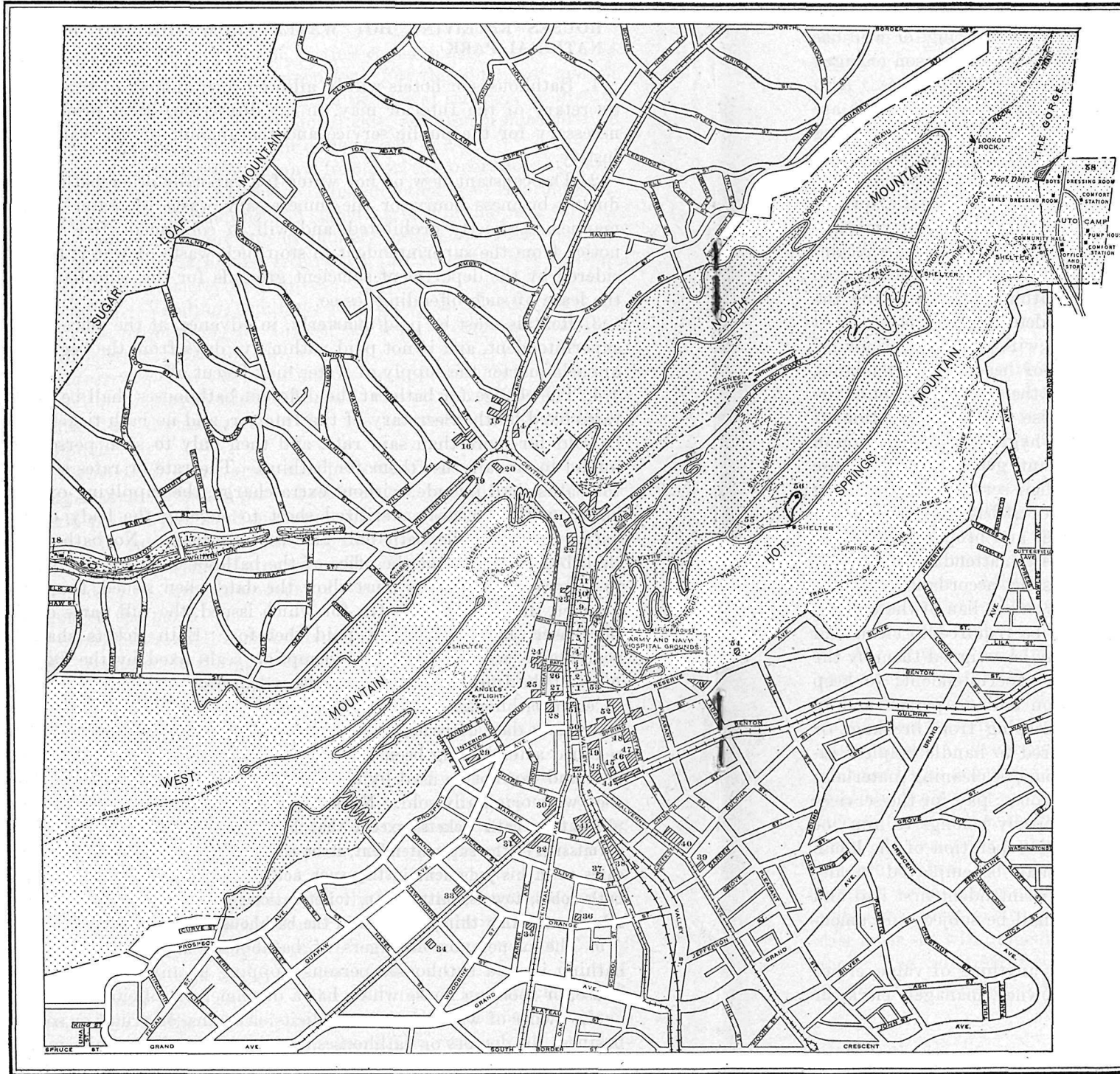
1. Bathhouses or hotels will be allowed such number of tubs as the Secretary of the Interior may, in his discretion, deem proper and necessary for the public service and the amount of hot water will justify.

2. The constant flow of hot water for vapor or other baths, even during business hours, or the unnecessary waste of water in any manner, is strictly prohibited, and will, if continued after written notice from the superintendent to stop such waste of water, be considered by the department sufficient grounds for the cancellation of the lease of such offending lessee.

3. Rentals must be paid quarterly, in advance, at the office of the superintendent, and if not paid within five days from the beginning of each quarter the supply of water may be cut off.

4. The charge for baths at the different bathhouses shall be at the rates fixed by the Secretary of the Interior, and no bath ticket shall be sold for more than said rate, and then only to such persons as intend to actually use them for bathing. The rate or rates so fixed for baths shall include, without extra charge, the supplying of each bather with one clean sterilized sheet to envelop the body of the bather while in the bath hall and cooling room. No bath ticket shall be sold except at the office of the bathhouse where the bath is to be given, and tickets must show the date when issued, the serial number, the number of baths for which issued, the full name of the purchaser, and the amount paid therefor. Bath tickets shall be redeemable according to the redemption scale fixed by the Department of the Interior. A copy of the redemption scale must be posted in each bathhouse. Bath tickets shall not be redeemable after one year from date of issue. No bath ticket or part of a ticket shall be reissued after having been redeemed. Bath tickets are not transferable and can not be used by any person other than the one to whom they were originally sold. No bathhouse will be permitted to issue complimentary bath tickets, except that bathhouse lessees may, on written permission of the superintendent, issue complimentary bath tickets in such cases as in his judgment justify such action. The renting and selling of bath robes, towels, mitts, soap, toilet articles, or the solicitation for and sale of any other thing of value in the bathhouses is prohibited.

5. The owners or managers of bathhouses are prohibited from bathing in said bathhouses persons stopping at any hotel, boarding house, or rooming house which has a drummer or solicitor on trains, or the owner of which drums or solicits on trains, or drums or solicits business for doctors or bathhouses, or who has, or has in his employ,



LEGEND

- PARK AREA (927 Acres)
- ROADS (12 Miles within Park)
- TRAILS (18 Miles within Park)
- STREET CAR LINES
- RAILROADS
- BUILDINGS
- PAVILIONS
- TENNIS COURTS

SCALE OF FEET  
500 0 500 1000

The numbers in this list refer to the numbers on the map:

1. Superintendent's office.
2. Lamar bathhouse.
3. Buckstaff baths.
4. Ozark bathhouse.
5. Quapaw bathhouse.
6. Government free bathhouse.
7. Fordyce bathhouse.
8. Main entrance to reservation.
9. Maurice bathhouse.
10. Hale bathhouse.
11. Superior bathhouse.
12. Arlington Hotel and baths.
13. Superintendent's residence (old).
14. Rockafellow Hotel and baths.
15. Majestic Hotel and baths.
16. St. Joseph's Infirmary and baths.
17. Whittington Lake Park.
18. Keeper's residence.
19. First Presbyterian Church.
20. Catholic Church.
21. Waukesha Hotel.
22. Dugan-Stuart Building.
23. Thompson Building.
24. Milwaukee Hotel.
25. Masonic Temple.
26. Pullman Hotel.
27. Arkansas National Bank.
28. First Baptist Church.
29. Leo N. Levi Memorial Hospital and bathhouse.
30. Goddard Hotel.
31. Alhambra bathhouse.
32. Como Hotel.
33. Moody Hotel and baths.
34. Courthouse.
35. Central Methodist Church.
36. High School Building.
37. Ozark Sanatorium bathhouse.
38. Missouri Pacific Depot.
39. Woodmen of Union Hospital and bathhouse.
40. Pythian bathhouse.
41. Broadway Hotel.
42. Citizens' National Bank.
43. Great Northern Hotel.
44. Rock Island Depot.
45. Post office.
46. Chamber of Commerce.
47. City Hall and Auditorium Theater.
48. Episcopal Church.
49. Elks' Club.
50. Arkansas Trust Company.
51. Security Bank.
52. Eastman Hotel and baths.
53. Imperial bathhouse.
54. Superintendent's residence (new).
55. Comfort station.
56. Tower.
57. Iron Spring (cold).
58. Public camp grounds.

North, West, Hot Springs, and Sugarloaf Mountains and Whittington Lake Park form the Hot Springs National Park, owned and operated by the Government.

MAP OF HOT SPRINGS NATIONAL PARK AND PORTION OF CITY SHOWING LOCATION OF BATHHOUSES AND PUBLIC BUILDINGS

any person who has been convicted of violating any ordinance of the city of Hot Springs prohibiting drumming or soliciting, or who has employed in or about such house any inside man or person engaged in drumming or soliciting business for doctors or bathhouses. Also the owners or managers and the employees of such bathhouses are absolutely prohibited from either directly or indirectly drumming for doctors or reflecting on or questioning the integrity of the hot-water supply of any other bathhouse; or of claiming superiority of its own supply of hot water over that furnished from the springs on the reservation to other bathhouses. Upon evidence of violation of this rule the superintendent shall report the facts, with his recommendation, to the Director of the National Park Service looking to the shutting off of the water from any bathhouse or canceling the lease, as the Secretary of the Interior may determine.

6. Owners and managers of bathhouses will provide in their respective bathhouses the requisite number of head bath attendants, who, under the supervision and direction of the superintendent of the Hot Springs National Park, shall supervise the administration of baths, the treatment of patients, matters of hygiene and sanitation in the bathhouses, and the work of bath attendants generally. Bathhouse attendants shall be allowed to charge for their services not exceeding 20 cents for a single bath, or \$4 per course of 21 baths, to be collected for the attendant by the bathhouse manager and properly accounted for by him to the attendant. The duties of the attendants shall consist in the administration of the baths in strict accordance with the bathing directions of registered physicians and in lieu of these as ordered by the superintendent. They shall be required to clean and care for such parts of the bathhouse as may be assigned them by the manager, subject to the approval of the superintendent; to keep themselves in a neat and cleanly condition both in person and in dress; and to make good any damages accruing from breakage or neglect of duty. They shall not be required to handle helpless individuals; rub mercury, furnish mops, brooms, or cleaning materials; furnish or launder towels, mitts, sheets, or robes; pay for the services of the porter or perform work which properly belongs to him; or incur any expense whatsoever incident to the operation of the house not specifically authorized. No person shall be employed in any bathhouse without the approval of the superintendent first had and obtained; and every person so employed shall be subject and amenable to the rules and regulations.

7. The payment of any sum of money or anything of value, either directly or indirectly, by any bathhouse owner, manager, clerk, or

attendant as compensation for drumming customers to any bathhouse, or allowing public drummers, drumming doctors, hotel, or boarding-house proprietors who are drummers, or persons who work with them as inside men, to bring persons or show them through, or to loiter in or about any bathhouse, is positively forbidden. Upon evidence of violation of this rule the superintendent shall report the facts, with his recommendation, to the Director of the National Park Service, looking to the shutting off of the water from any bathhouse or canceling the lease, as the Secretary of the Interior may determine.

8. The lessee of each bathhouse shall cause to be kept a full and correct daily register of each bath given, the number and kind of bath tickets sold, and the number of complimentary tickets, if any, issued each day, etc., such form of register to be approved by the superintendent and a copy therefrom of each day's business to be forwarded to the superintendent daily. No person shall be allowed to bathe without a numbered ticket being issued and a record of the same being kept, and report thereof duly certified by the manager filed with the superintendent on the first day of each month as paid, complimentary, or free baths.

9. All bathhouses receiving deposits of jewelry, money, or other valuables from bathers must provide means satisfactory to the superintendent of the park for the safe-keeping thereof; it is to be understood, however, that the Government assumes no responsibility in the premises. All losses must be promptly reported to the superintendent by the bathhouse manager in writing.

10. An applicant for baths who is under medical treatment shall not be permitted to bathe in any bathhouse unless said applicant presents satisfactory evidence that he or she is the patient of a physician who is duly registered at the office of the superintendent as qualified to prescribe the waters of the hot springs, and who is known not to engage in drumming for custom: *Provided*, That every applicant for baths not under the care of a registered physician or person publicly professing to cure or heal shall be required to make a certificate to be filed with the bathhouse manager that he or she is not under the care of any physician or person who shall publicly profess to cure or heal, and should such applicant subsequently employ, consult, or take treatment from any physician or person who shall publicly profess to cure or heal while taking the baths, then in such case he or she will immediately notify the bathhouse manager of such fact. The violation of this rule by the owner, manager, or any employee of a bathhouse will result in the cutting off of the water from

the bathhouse or the canceling of the lease, as the Secretary of the Interior may determine.

11. Physicians or persons publicly professing to cure or heal, desiring to prescribe the waters of the hot springs, either internally or through the medium of baths, must first be registered at the office of the superintendent of the reservation, and shall use only such uniform form of bathing directions as meets with the approval of the superintendent. Registration will be accorded only to such physicians or persons publicly professing to cure or heal as are found by the Secretary of the Interior to have proper professional qualifications and character, qualified to make intelligent diagnoses, and who do not engage in drumming for custom. No physician or person publicly professing to cure or heal who shall engage in the solicitation of patronage through the medium of drummers or otherwise, or who shall be convicted of violating any statute of the United States, or any law of the State of Arkansas, or any regulation of the Arkansas State Board of Health, or who shall engage in unprofessional, disreputable, or dishonest conduct, or is addicted to the drug or other habit which disqualifies him for the performance of his professional duties shall be or remain registered. In case any person who, in violation of these regulations, bathes or attempts to bathe, or enters or attempts to enter upon the Hot Springs National Park to bathe, shall have the permit of a physician or person who shall publicly profess to cure or heal therefor, such physician or person who shall publicly profess to cure or heal shall be liable to the penalties provided in the act of April 20, 1904, unless he is regularly registered, but the bather or person attempting to bathe shall not be liable to the penalties of said act unless it shall be made to appear that he knew or had reason to believe that the physician or person who shall publicly profess to cure or heal giving him the permit to bathe was not regularly registered.

12. If a charge is made to the superintendent in writing, under oath, supported by the affidavits of two or more reputable witnesses, that a registered physician has violated any of the laws or regulations pertaining to the government of the bathhouses receiving hot water from said park, such physician shall be immediately notified by the superintendent of the fact that affidavits have been made against him, and in the presence of the superintendent be accorded an opportunity to cross-examine the witness on the subject thereof; and if in the judgment of the superintendent the facts warrant such action he will cite the physician to appear before him on a day to be named within not exceeding five days from the date of notice to show cause why his name should not be stricken from the register of physicians authorized to prescribe the waters of said

springs; and pending the investigation and final action upon the charges the right of such physician to prescribe the hot waters may be suspended by the Secretary of the Interior. The physician against whom such complaint is made shall have the right to cross-examine said affiants and any witnesses who may appear before the superintendent, or to file written interrogatories pertinent to the issue of such complainants or witnesses, to be answered by them under oath, and may submit within five days thereafter counter-affidavits in answer to the charges made in the affidavits of the witnesses. The complainant witnesses may file rebuttal affidavits within five days after service upon them of said counteraffidavits, and the hearing of said charges shall be had on the record aforesaid, and the recommendation of the superintendent in the premises forwarded to the Secretary of the Interior through the Federal Registration Board, which board, after reviewing the record and the recommendation of the superintendent, shall thereafter promptly submit its findings as a board of review, together with such supplemental recommendations as to it may appear proper, to the Secretary of the Interior.

An appeal from the recommendation of the superintendent upon said record may be taken to the Secretary of the Interior within five days from the date of service by the superintendent of a copy of his recommendation on the accused. If upon consideration of the complaint the charge is not sustained by the Secretary, the accused will be at once advised and the charges dismissed. If, however, such charge is sustained, the name of the physician shall be stricken from the registered list.

13. All bathhouses shall be kept in a neat, clean, and sanitary condition, and all sewage and waste water properly conducted away, and all underdrainage kept in perfect order. Bathtubs must be thoroughly scrubbed after each bath, either with strong lye soap or scrubbing powder. The water-closets shall have sufficient and free connection with the public sewers and be kept in the best order and with the best plumbing furnishings and appliances. Lessees of bathhouses on the national park shall, under the direction of the superintendent, cultivate and maintain the parts of the bathhouse park in front of their respective bathhouses, the space for each to cultivate to be allotted by the superintendent.

14. Each bathhouse manager, clerk, and attendant shall be required to have a full and complete understanding of the bathhouse rules and regulations before entering upon his duties. The superintendent is authorized to require the discharge of any bathhouse manager, clerk, attendant, mercury rubber, or masseur, for bathhouse or doctor drumming, or refusing or neglecting to carry out the bathhouse rules and regulations according to the true intent and meaning thereof.

Any person discharged for cause from a bathhouse or removed at the request of the superintendent shall not be again employed by the same or any other bathhouse or permitted to render service in any bathhouse without the written consent of the superintendent.

Managers must promptly report in writing to the superintendent the name of any person so removed.

No bath attendant, helper, masseur, mercury rubber, or other employee who comes in direct personal contact with bathers will be permitted to enter on duty without first undergoing physical examination at the United States Public Health Service clinic and being found free from any infectious or communicable diseases.

15. A neatly framed copy of the rules and regulations now in force, together with the prices of baths and attendant's fees, both separately and combined, printed in large black type on white cardboard, shall be conspicuously posted in the office of each bathhouse.

#### RULES FOR THE GOVERNMENT OF THE FEDERAL REGISTRATION BOARD

1. There shall be a president and secretary elected by the board, who shall each serve for one year and until his successor is elected and qualified. Such election shall be held at the annual meeting, which shall be the first regular meeting of the board after the personnel thereof for the ensuing year has been determined by the Secretary of the Interior. Should a vacancy occur in either position by death, resignation, or otherwise, such vacancy shall be filled by the board at its first regular meeting next succeeding the date the vacancy occurs, or at a special meeting called for that purpose.

2. Three members of the board shall constitute a quorum, with full authority to transact any and all business that may come before the board.

3. Minutes of all business transacted by the board shall be reduced to writing and be copied in a record provided for the purpose, and at the next regular or special meeting the minutes of the previous meeting shall be read and approved, with such corrections, if any, as the board may consider proper to make.

4. The regular monthly meetings shall be held on the second and fourth Wednesdays of each month at 8 o'clock p. m., and all routine business not filed with the secretary of the board at least 24 hours before the time fixed for the meeting will not be considered, but will be held for consideration until the next regular meeting: *Provided, however,* That the president of the board may waive this provision when in his judgment the exigencies of the case demand it. Such other meetings may be held as the board may deem necessary, prior notice thereof to be duly given.

Examination of applicants for registration shall be held quarterly on a date to be fixed by the board. Any registered doctor hereafter dropped from the list of registered physicians will not be restored until after he successfully passes the regular examination prescribed by the board for original registration, nor shall any such physician

be eligible for examination for a period of five years from the date on which his name was dropped from the registered list: *Provided,* That the Secretary of the Interior may, in his discretion, authorize the examination of such physician at any time after one year from said date.

5. The following rules shall govern applicants for registration:

(a) To be entitled to registration applicants must be graduates of some reputable medical school legally authorized to confer the degree of doctor of medicine, or of some reputable school of osteopathy recognized by the American Osteopath Association, and must have complied with the laws of the State of Arkansas relating to the admission of physicians to the practice of medicine and surgery, or either, within said State.

(b) Applicants will be required to furnish in writing such evidence as the board may desire touching their personal history and personal and moral character and standing during the five years next preceding the date of their applications, such evidence to be placed in the hands of the secretary of the board not later than 10 days prior to the regular date for examination of applicants. Applicants will also be required to submit to such examination as the board may see proper to subject them, touching their qualifications and knowledge of medicine and surgery and to prescribe the hot waters: *Provided,* That the names of medical officers of the Army stationed at the Army and Navy General Hospital in Hot Springs, Ark., shall be placed on the list of registered physicians without examination while assigned to this hospital.

Physicians who have successfully passed the examination of the National Board of Medical Examiners shall not be required to submit to an examination by the Federal Registration Board provided that their moral and ethical qualifications are satisfactory upon investigation by the board.

(c) An applicant who twice fails in his examination before the Federal Registration Board shall not be permitted to again take the examination prescribed by the board until after the lapse of one year from the date of his last failure.

(d) No registered physician shall be permitted to associate himself in practice looking to the prescribing of the waters of the Hot Springs with a nonregistered physician or other person publicly professing to cure or heal, under penalty of having his name removed from the registered list. Before any assistant is employed by a registered physician, his name must be submitted to the superintendent of the park, together with such other information as may be called for by the superintendent. Registered physicians must also notify the superintendent of any contemplated absence from Hot Springs and give the name of the person in charge of his office during such absence. Registered physicians will be held strictly accountable for the actions of their assistants, and any violation of these regulations by the registered physician or his assistant or assistants will be

deemed sufficient cause for the removal of the name of such physician from the registered list. The name of any registered physician who shall give bath directions for the patients of a nonregistered physician shall be removed from the registered list, but this shall not apply to the prescribing of the waters of the Hot Springs for the patients of another practitioner who, while legally licensed by the State of Arkansas to treat ailments of the human system, is not eligible for registration under paragraph (a) hereof: *Provided*, That in all such cases the registered physician so prescribing shall deal directly with the patient and shall receive no fee, commission, or other compensation, either directly or indirectly, from such other practitioner on penalty of having his name removed from the registered list: *And provided*, That the name of such other practitioner treating such patient shall be given on the bath directions.

(e) No registered physician, upon removal of his offices from one location to another, shall publish in any newspaper notice to that effect for a longer period than one month, and no registered physician, upon returning from an absence from the city of Hot Springs, shall publish such notice in any newspaper for longer than one week.

(f) Registered physicians occupying offices formerly occupied by physicians who have died, retired, or have been placed on the non-active list of registered physicians are required to have the names of such nonactive physicians removed without delay from signs, windows, and directories in the buildings in which such physicians formerly practiced, and upon noncompliance within 10 days with this provision may be suspended by the Secretary of the Interior until the delinquencies have been remedied.

6. The order for the transaction of business before the board shall be as follows:

- (a) Reading and approval of minutes of previous meeting.
- (b) Consideration of new business.
- (c) Consideration of unfinished business.
- (d) Examination of applicants for registration.
- (e) Miscellaneous business.

7. Effective July 1, 1920, physicians who are or may thereafter be registered in the office of the superintendent as authorized to prescribe the hot waters will be required to pay to the superintendent for such privilege the sum of \$60 per annum, payable semiannually within five days from July 1 and January 1, in default of which payment the superintendent will suspend delinquents from the registered list, reporting his action to the Director of the National Park Service. The registration of a physician remaining delinquent for a period of six months or more shall be revoked, and such physician will be required successfully to pass a regular examination to reestablish his registration.

Applicants for examination preliminary to registration under paragraph 4 hereof will be required to pay the sum of \$10 to the superintendent as examination fee, prior to admittance to examination.

Persons having complied with the foregoing requirements for registration will be required to pay the sum of \$15 to the superintendent as registration fee.

Any physician on the registered list desiring to change his residence from Hot Springs or to retire from active practice longer than one year and during such absence retain his registration and be exempt from the continuation fee may file application in writing with the superintendent to be placed upon the nonresident list and while on the nonresident list shall be exempt from the continuation fee.

If such physician should desire to return to active practice at Hot Springs and have his name again placed upon the list of registered physicians he may so apply in writing, stating his residence and occupation during the time he has been on the nonresident list, and shall give three references who can vouch for his conduct. Upon approval of these references by the superintendent such physician shall be placed upon the list of registered physicians and shall be governed by all the rules applying to registered physicians.

8. The fees prescribed in the foregoing paragraph are payable in advance in the form of postal money order or certified or cashier's check in net amount of the fee, drawn to the order of the Superintendent, Hot Springs National Park, or in legal tender, and are not subject to refund either in whole or in part.

9. The provisions of paragraphs 7 and 8 shall not apply to physicians stationed at the Army and Navy General Hospital not doing outside practice, or to members of the Federal Registration Board.

The foregoing rules are subject to amendment at any regular meeting of the board on the giving of 30 days' notice in writing of the proposed amendment, subject, however, to the approval of the Secretary of the Interior.

#### RULES AND REGULATIONS FOR THE GOVERNMENT OF THE FREE BATHHOUSE

These baths are provided and maintained by the United States Government in accordance with the acts of Congress approved December 16, 1878, and March 2, 1911, which restrict the use of the free baths to the indigent; in other words, to persons who are poor, needy, in want, or without means of comfortable subsistence.

ACT OF MARCH 2, 1911 (36 STAT. 1015)

*Be it enacted by the Senate and House of Representatives of the United States of America in Congress assembled*, That only persons who are without and unable to obtain the means to pay for baths and are suffering from ailments for which bathing in the water of the Hot Springs Reservation will afford relief or effect a cure shall be permitted to bathe at the free bathhouse on the public reservation at Hot Springs, Arkansas; and before any person shall be permitted to bathe at the free bathhouse on the reservation he shall be required to make oath, before such officer duly authorized to administer oaths for general purposes as the superintendent of the Hot Springs Reservation shall designate, that he is without and unable to obtain the means to pay for baths; and any person desiring to bathe at the free bathhouse on the Hot Springs Reservation making a false oath as to his financial condition shall be deemed guilty of a misdemeanor and upon conviction thereof shall be subject to a fine of not to exceed twenty-five dollars, or thirty days' imprisonment, or both.

1. No baths will be supplied except upon written application, duly sworn to, made on blanks furnished at the office of the bathhouse, making full answers to the questions therein propounded; then if the applicant is found to be entitled to take the baths in accordance with the act of March 2, 1911, above stated, the manager will issue a ticket good for 21 baths, which may be renewed on the same application if necessary.

2. Persons using the free baths are required to maintain quiet and orderly deportment while in or about the bathhouse; to abstain from the use of tobacco, either by chewing or smoking, while in the pool rooms, dressing rooms, or office; and to refrain from scattering rags or paper on the floor, or from loitering in or about the building after bathing.

3. The wanton exposure of person or entering any of the cooling rooms in a nude state; the use of loud, vulgar, or profane language; or the use of rags, paper, soap, or any foreign substance in the pool rooms is positively prohibited.

4. Persons using these baths are not allowed to stand or sit on, or in any way interfere with, the water pipes or valves, or to stand on the chairs or benches. All persons entering the house are required to clean their feet at the door and avoid as much as possible bringing mud or dirt into the building. Boys over 5 years of age will not be allowed in the female department during bathing hours.

5. Any willful or repeated violation of these rules, or any disorderly or contemptuous conduct, will subject the persons so offending to suspension or expulsion, at the discretion of the superintendent of the park.

6. Neither the bathhouse manager nor attendants shall be allowed to receive or become responsible for any valuables, or to charge any fees for any service rendered to bathers which comes within the direct line of their duty.

7. The manager of the free bathhouse, under supervision of the superintendent of the park, is required to enforce all the foregoing rules; to maintain good order in and about the bathhouse; to see that all indigent persons applying are supplied with baths; and to make a written report to the superintendent each month on blank forms supplied for that purpose. He may reject any application for free baths if he has reason to believe the applicant has made false answers in his written application, and the aggrieved may appeal to the superintendent of the park.

#### RULES AND REGULATIONS GOVERNING BATH ATTENDANTS IN THE PAY BATHHOUSES RECEIVING HOT WATER FROM THE SPRINGS ON THE HOT SPRINGS NATIONAL PARK

1. Bath attendants shall be required to take a written examination when ordered by the superintendent, after which successful candidates shall be granted certificates as qualified attendants and fur-

nished with a numbered badge to be worn at all times while on duty, for such time as may be determined by the Secretary of the Interior.

2. Two consecutive failures to qualify as attendant shall debar the applicant from further examination for a period of one year.

3. To entitle an applicant to a certificate as a qualified attendant a total mark of not less than 70 points shall be required, to be awarded by the superintendent or examining officer. In the grading of papers the experience and general adaptability of the applicant will be considered in determining the grade. In order to qualify for the position of attendant, an applicant must first serve an apprenticeship of at least three months as helper in the bathhouses.

4. Whenever the number of qualified attendants is in excess of the requirements of the service, those not employed shall be entitled to have their names enrolled upon a waiting list in the office of the superintendent.

5. Managers are prohibited from employing as an attendant any person not holding a certificate of qualification as such whenever there are five or more qualified attendants registered on the waiting list in the office of the superintendent: *Provided, however,* That the superintendent may in his discretion authorize the temporary employment of not to exceed one helper by each bath attendant in order that they may serve an apprenticeship before making application for registration as attendants.

6. Managers may suspend or discharge attendants employed by them, but shall not have authority to revoke their licenses or to prohibit their employment in other houses.

7. An attendant suspended by the superintendent shall not be employed in any capacity in any bathhouse during the period of suspension.

8. An attendant discharged by the superintendent shall have his or her certificate of qualification revoked, and shall not again be employed in any capacity in any bathhouse for a period of not less than six months.

9. Managers are required to report immediately by letter to the superintendent the employment, suspension, resignation, or discharge of attendants, and to state cause in case of suspension or discharge.

10. Effective July 1, 1920, the superintendent is authorized to collect a privilege fee of \$12 per annum, or part thereof, from all bath attendants operating in bathhouses receiving hot water from the Hot Springs National Park. Such fee is payable semiannually at the office of the superintendent within five days from July 1 and January 1. In default of such payment the superintendent may, in his discretion, revoke the licenses of delinquent attendants.

11. The fees prescribed in the foregoing paragraph are payable in advance in the form of postal money order or certified or cashier's

check in net amount of the fee, drawn to the order of the Superintendent, Hot Springs National Park, or in legal tender, and are not subject to refund either in whole or in part.

**RULES AND REGULATIONS GOVERNING MASSEURS, MASSEUSES, AND MERCURY RUBBERS IN ALL BATHHOUSES RECEIVING WATER FROM THE HOT SPRINGS NATIONAL PARK**

**MASSEURS AND MASSEUSES**

1. Each bathhouse masseur or masseuse shall appear when notified by the superintendent before a board appointed by him, to qualify as to his or her competency; and no bathhouse manager shall permit massage to be given by other than a qualified masseur or masseuse. Applicants for the position of masseurs or masseuses must be graduates of reputable schools of massage or furnish evidence of at least 18 months of practical experience in the practice of massage. They will be given a written and practical examination in subjects pertaining to massage. Two consecutive failures to qualify as masseur or masseuse will debar the applicant from further examination for a period of one year.

2. Masseurs and masseuses are forbidden to make diagnoses of ailments; to prescribe any drugs, chemicals, or medicines for internal administration; or to prescribe diets or waters. They shall not use in their work clinical thermometers, stethoscopes, or any other instruments employed by physicians.

3. No form of electric current shall be administered or recommended to the patient of any physician without such physician's direction.

4. All tickets shall be sold and collected for by the bathhouse manager and properly accounted for by him to the operator.

5. Operators shall not be required to pay any sum exceeding 40 per cent of the gross receipts for the privilege of operating in any bathhouse, whether working on a percentage basis or renting space outright. Operators shall not be required to furnish any materials or equipment necessary in giving treatments, nor incur any expense incident to the operation of the massage department: *Provided*, That they shall be required to make good any damages accruing from breakage or neglect of duty. All materials and equipment used in massage departments shall be subject to the approval of the superintendent.

6. Failure to comply with the above regulations will subject the operator to immediate suspension or dismissal as may be determined by the superintendent.

7. Effective July 1, 1920, the superintendent is authorized to collect a privilege fee of \$12 per annum, or part thereof, from all masseurs and masseuses operating in bathhouses receiving hot water from the Hot Springs National Park. Such fee is payable semiannually at the office of the superintendent within five days from July 1 and

January 1, in default of which payment the superintendent may, in his discretion, cancel the privilege of such delinquent masseurs and masseuses.

8. The fees prescribed in the foregoing paragraph are payable in advance in the form of postal money order or certified or cashier's check in net amount of the fee, drawn to the order of the Superintendent, Hot Springs National Park, or in legal tender, and are not subject to refund either in whole or in part.

**MERCURY RUBBERS**

1. Uniform charges shall be made at all bathhouses for rubs and inunctions by all mercury rubbers. The time consumed and parts to be rubbed shall be in accordance with the directions of the patient's physician.

2. Mercury rubbers are forbidden to make diagnoses of ailments; to prescribe any drugs, chemicals, medicines, diets, or waters; or to employ any instruments used by physicians in the diagnosis or treatment of diseases.

3. No mercury rubber shall furnish mercury or be permitted to suggest the size of dose of mercury to be used.

4. Mercurial inunctions shall not be administered or recommended to the patient of any physician without such physician's directions.

5. Failure to comply with the above regulations will subject the mercury rubber to immediate suspension or dismissal, as may be determined by the superintendent.

**SCHEDULE OF RATES**

The maximum charges for general massage, including all necessary accessories, at all bathhouses, shall be as follows:

21 treatments .....	\$30.00
8 treatments .....	12.00
Single treatments.....	2.00
Alcohol rubs, each .....	.75

The maximum charges of mercury rubbers at all bathhouses shall be as follows:

21 rubs .....	\$9.00
14 rubs .....	6.00
7 rubs .....	3.00
Single rubs.....	.50

**AUTOMOBILE AND MOTOR CYCLE REGULATIONS**

1. *Careful driving.*—Careful driving is demanded of all persons using the roads.

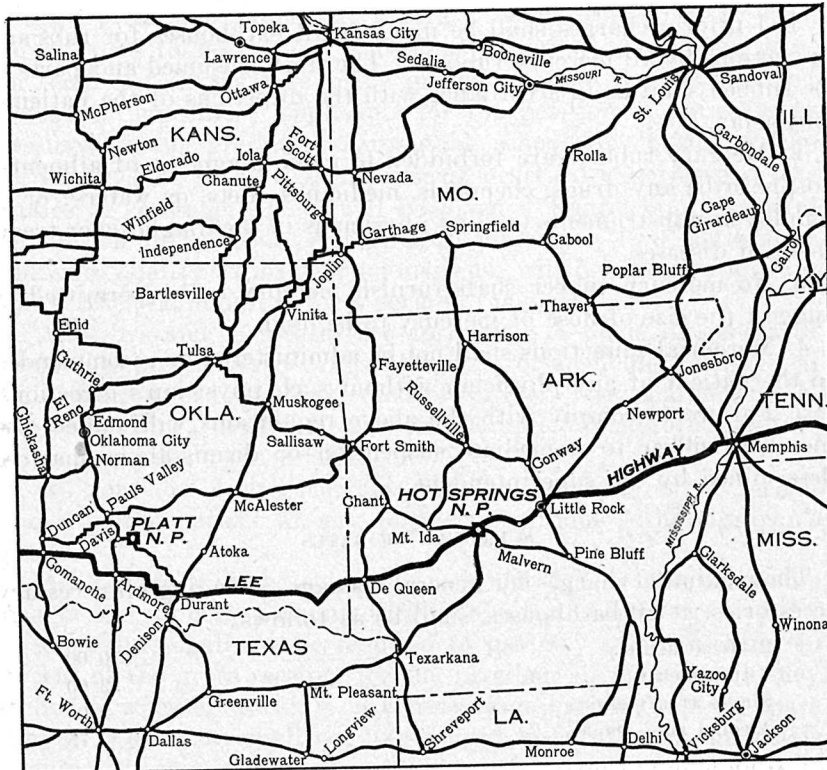
The Government is in no way responsible for any kind of accident.



2. *Motor cycles.*—Motor cycles are admitted to these roads under the same conditions as automobiles, and subject to the same regulations as far as applicable.

3. *Horse-drawn vehicles and saddle horses.*—Horse-drawn vehicles and saddle horses have the right of way on the inside of the roads, and automobiles will be backed or otherwise handled as may be necessary so as to enable horses and vehicles to pass with safety.

4. *Distance apart; gears and brakes.*—Automobiles while in motion must not be less than 30 feet apart, except for the purpose of



MAP SHOWING HOT SPRINGS NATIONAL PARK AND AUTOMOBILE ROADS LEADING THERETO

passing, which is permissible only on comparative levels or on slight grades.

All automobiles, except while shifting gears, must retain their gears constantly enmeshed. Persons desiring to enter these roads in an automobile should see that all parts of the machine, particularly the brakes and tires, are in first-class working order and capable of making the trip.

5. *Speeds.*—Speed is limited to 20 miles per hour on any part of the roads, but this speed must be reduced to 12 miles per hour when approaching or rounding turns, or approaching and passing vehicles.

6. *Horns.*—The horn will be sounded on approaching curves or stretches of road concealed for any considerable distance by slopes, overhanging trees or other obstacles, and before meeting or passing other machines, riding or driving animals, and pedestrians.

7. *Muffler cut-outs.*—Muffler cut-outs must be closed at all times.

8. Violation of any of the foregoing regulations will, in the discretion of the superintendent, cause the revocation of the privilege of using these roads, and will subject the owner of the automobile to liability for any damage occasioned thereby and to ejection from the park.

### RULES AND REGULATIONS FOR THE GOVERNMENT OF THE PUBLIC CAMP GROUNDS

1. Any person desiring to camp in the public camp grounds must first register in the office of the caretaker and obtain a permit for the use of a camp site.

2. Campers will be required to use sites assigned to them and must not move to other sites without first obtaining the permission of the caretaker. Permits for camp sites will be issued by the caretaker for periods to be determined by the superintendent. Renewal permits may be issued in the discretion of the superintendent.

3. Visitors will be required to preserve the camp grounds in a cleanly, sanitary, and orderly condition at all times. Garbage and other refuse must be promptly put into receptacles provided for such purpose. **Keep the camp grounds clean.**

4. Unnecessary noise and commotion will not be tolerated. Between the hours of 10 p. m. and 5 a. m. quietness must be maintained. No traffic will be allowed between these hours, and the running of motors will not be permitted.

5. The use of profane or vulgar language is strictly prohibited, and offenders will be promptly ejected from the camp grounds.

6. Laundering or the washing of dishes and cooking utensils will not be permitted near flowing streams or in the swimming pool.

7. The use of firewood for cooking purposes or the heating of water only will be permitted. All fires shall be completely extinguished when not in use. Camp fires are prohibited.

8. Bathing in the pool will be allowed only between sunrise and dusk. Bathers must be properly clad.

9. The driving of nails, etc., into trees, or cutting or otherwise injuring live timber is prohibited.

10. Persons who possess firearms of any kind, desiring to enter the camp grounds, must leave such weapons with the caretaker, who will give his receipt therefor and return them to the owner on his departure. The Government assumes no responsibility for loss or damage to any weapon so surrendered, nor are park officers authorized to accept the responsibility of custody of any property for the convenience of visitors.

11. Dogs must be kept chained, on a leash, or muzzled at all times.

12. Persons violating any of the foregoing regulations or guilty of improper or offensive conduct will be promptly ejected from the camp grounds and will not be permitted to reenter except upon written permission of the superintendent.



VIEW LOOKING UP BATHHOUSE ROW



MAGNOLIA PROMENADE ALONG BATHHOUSE ROW



PINES ON NORTH MOUNTAIN



FALLS ON UPPER GULPHA CREEK  
GULPHA GORGE



AT THE PUBLIC CAMP GROUNDS