

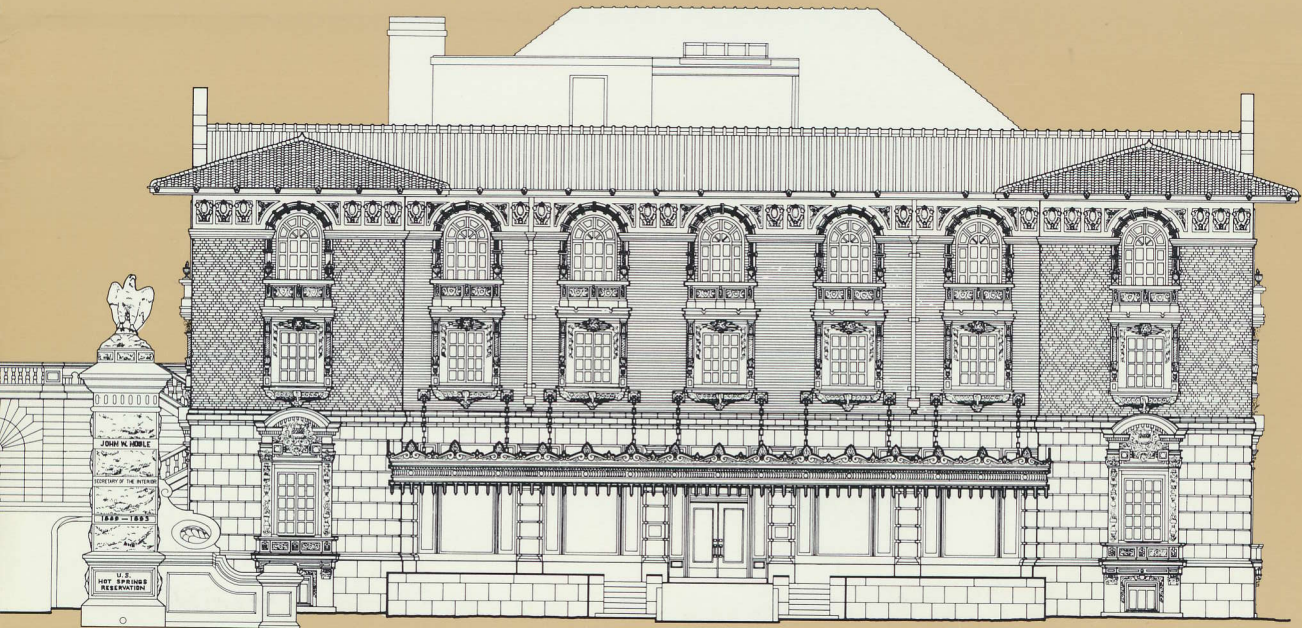
HOT SPRINGS

NATIONAL PARK, ARKANSAS

Summer Season Program

JUNE 1-AUGUST 15

1987



WELCOME TO HOT SPRINGS NATIONAL PARK, ARKANSAS

Hot Springs National Park is the oldest **area** in the National Park system. Hot Springs is unique in having

historic thermal water bathhouses. There are many different opportunities to learn more about the area.

The City of Hot Springs and the Hot Springs National Park share the same name-Hot Springs National Park. The Hot Springs National Park manages 5000 acres of land surrounding the north end of the city of Hot Springs. This area includes the discharge area of the springs-the Bathhouse Row/Grand Promenade area downtown, and the recharge area of the springs-some of the mountains and valleys to the north where the rainwater which

feeds the hot springs enters the ground.

The National Park Service and the Hot Springs Arts Center are working together to provide special programs to enhance your visit to Hot Springs. These will be headquartered in the Lamar Bathhouse building, located next door to the National Park Visitor Center. Be sure to include this site when visiting the park.

NATIONAL PARK VISITOR CENTER

Central and Reserve Avenues

Open daily, 8:00 a.m. to 5:00 p.m.

No admission charge

An excellent beginning point for your visit. Here you can get maps and information on the National Park as well as attractions in the city and surrounding area.

View "Valley of the Vapors," our 12-minute orientation slide program to hear a brief history of Hot Springs National Park and an outline of points of interest within the park.

Browse through our exhibits and sales area, which offers publications about the cultural and natural history of Hot Springs and the Ouachita Mountains.

LAMAR BATHHOUSE

On Bathhouse Row, next to Visitor Center

A beehive of activity, several programs are offered at the Lamar, which closed as a bathhouse in 1985.

Lamar Bathhouse Tour

Everyday, on the hour and half hour

9:30 a.m. to 4:00 p.m.

No admission charge

People have been coming to this area for baths since prehistoric times. The interest in baths prompted the U.S. Government to create Hot Springs Reservation here in 1832, which was later renamed Hot Springs National Park in 1921. This guided tour will show you how baths were, and are still taken. Hear about times past when nearly everyone's visit included a course of the baths.

Free Photography Workshop

Wednesday through Saturday

By appointment

Have you ever developed your own black and white film and printed your own photographs? Meet with the Hot Springs Art Center's photography instructor, Beverly Buys, who will reserve a space for you to discover the inside workings of a darkroom after you expose a roll of

35 mm black and white film while exploring the scenic mountain beauty and historic structures of the Hot Springs National Park. All that is required is a 35 mm camera and a 12 exposure roll of black and white film and approximately 1 hour and 15 minutes. All other materials and instruction are provided through grants from the Hot Springs Advertising and Promotion Commission, the Arkansas Arts Council and the N.E.A.

Photography Exhibit

In the Lamar Bathhouse lobby is an exhibit of photography from the surrounding Hot Springs area provided by the photography workshop. The exhibit will change weekly and is open to the public daily without charge.

Free Concerts

For more information on free concerts, live theatre and a classic film series, phone the Hot Springs Arts Center at (501) 624-9836 for details during your visit to Hot Springs.

Historical Film and Slide Presentation

Enjoy Hot Springs and Arkansas from an historical viewpoint. Presentations from the **Arkansas Educational Television Network** will be shown on a rotating basis



along with an historical United States Constitution presentation from the National Park Service. These showings run from 16 minutes to one hour in length daily. There is no admission charge.

THERMAL FEATURES TOUR

Everyday, every hour

10:15 a.m. to 4:15 p.m.

No admission charge

Are you interested in the story of why the hot springs exist here? If you are, this tour is for you.

Beginning at the south end of the Quapaw Bathhouse at the canopied sign, you will visit the Indian Spring in the Quapaw basement, the open springs, the cascade display, and hear about how human interaction with the springs has changed this area.

GULPHA GORGE AMPHITHEATER

Located in Gulpha Gorge Campground

Off State Highway 70B

No admission charge for programs

Evening Campfire Programs

Tuesday, Thursday, Saturday, and Sunday

8:30 p.m.

These programs cover a wide variety of topics related to the National Park, including Native Americans, wildflowers and edible plants, snakes, diversions of early visitors, other spring resorts in the area, and the Ouachita Mountains, just to name a few. You can find out an evening's subject at the Visitor Center or check the campground bulletin boards.

Quarry Hikes

Wednesday and Saturday

9:00 a.m.

Total length of hike approximately 2 miles

Leaving from the Amphitheater, you will make your way up Indian Mountain to a whetstone quarry and the Indian Quarry, two of the few remaining. Hear about how the novaculite was mined and used by the Caddo Indians and later by the settlers in the area. Sturdy shoes and knee socks or long pants are advised.

ARRIVING LATE IN THE DAY?

The Grand Promenade and Bathhouse Row with the hot springs displays are available at all hours, as are the scenic mountain drives on Hot Springs and West Mountains. The campfire programs are also a source of information.



TAKE PRIDE IN AMERICA

National Parks are our greatest national resources and everyone has a responsibility to help maintain them. Please put trash in trash cans. Enjoy plants, animals, and rocks. Leave them where you find them. If you see any vandalism, report it to a park ranger or call 624-3124. With your help, future generations will be able to visit the park and see it just as you have.

CREDITS

These programs are made possible through grants and services provided by the Hot Springs National Park, the Hot Springs Advertising and Promotion Commission, the Arkansas Arts Council and the National Endowment for the Arts.

Architectural Drawings:

Fordyce-Historic American Buildings Survey, National Park Service, Leonard M. Kliwinski, 1984

Maurice-Historic American Buildings Survey, National Park Service, Gregory C. McCall, 1984

Lamar-Historic American Buildings Survey, National Park Service, Dan Wininski, 1984

