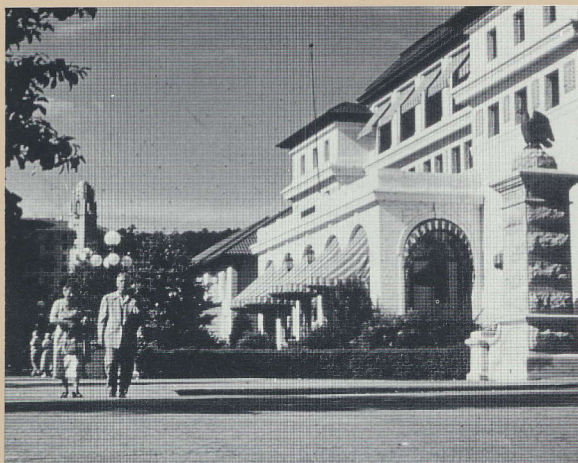

HOT SPRINGS NATIONAL PARK, ARKANSAS

Summer Season Program
June 1-August 20, 1988





WELCOME

Hot Springs National Park is one of the remaining examples of a bygone era of grace, charm and historical importance. For those who seek a more leisurely way of life far from today's busy world, Hot Springs offers historically famous bathhouses featuring thermal water for relaxation and recuperation. There are mountain trails, vistas of the valley and lakes below where camping, recreation and exploration await you. The City of Hot Springs and Hot Springs National Park enjoy a unique relationship, with a definite boundary where one ends and the other begins. The National Park manages 5,000 acres of land surrounding the north end of the City of Hot Springs, including the discharge area of the springs, Bathhouse Row/Grand Promenade/Whittington Park area downtown and the recharge area of the springs - some of the mountains and valleys to the North.

The National Park Service and the Hot Springs Arts Center are working together to provide special programs to enhance your visit to Hot Springs. These programs will be available in the Lamar Bathhouse building, located next door to the National Park Visitor Center at Reserve and Central Avenues, downtown.

SPONSORS

All of these visitor programs are made possible through grants and services provided by the Hot Springs Arts Center, Hot Springs National Park, the Hot Springs Advertising and Promotion Commission, the Arkansas Arts Council and the National Endowment for the Arts. The Hot Springs Arts Center is a Non-profit Agency which operates in part from grants, corporate support and private donations.

To support our efforts in developing new creative programs contact the Hot Springs Arts Center, 815 Whittington, Hot Springs, Arkansas 71901 or 501/624-9836.



LAMAR BATHHOUSE

On Bathhouse Row, next to Visitor Center

The Lamar Bathhouse today is a center of activity for several summer programs.

LAMAR BATHHOUSE TOUR

*Everyday, on the hour and half hour
9:30 a.m. to 4:00 p.m.*

The hot mineral water baths have been drawing people to this area since pre-historic times prompting the U.S. Government to create the Hot Springs Reservation in 1832, later renamed Hot Springs National Park in 1921. This guided tour shows how baths were taken in a bathhouse, when nearly everyone's visit included a relaxing time in the hot water. The hot water baths are still enjoyed today.

FREE PHOTOGRAPHY WORKSHOP

*Wednesday through Saturday
By appointment*

For those interested in photography, the Hot Springs Arts Center will provide an opportunity for you to discover the workings of a darkroom. The Arts Center's photography instructor, Beverly Buys, will assist you in capturing the scenic mountain beauty and historic buildings on a roll of 35mm black and white film. All that is required is a 35mm camera and approximately two hours with the instructor who will lead you through the process of developing your own photographs.

All other materials and instruction are provided through grants from the Hot Springs Advertising and Promotion Commission, the Arkansas Arts Council and the National Endowment for the Arts. On a first come basis and by appointment.

ART EXHIBITS

During the summer a photography exhibit from the Hot Springs area provided by the photography workshop will

be open to the public at no charge in the lobby of the Lamar Bathhouse. The exhibit will change weekly.

12th ANNUAL ARKANSAS EXHIBITION

A chance to see the works of resident Arkansas Artists. One of our state's leading multi-media competitive exhibitions will be offered at the Hot Springs Arts Center June 4th through June 30th. A reception open to the public at no charge will be held June 4th from 2:00-4:00 p.m. at the Arts Center adjacent to Whittington Park.

CONCERTS

The Hot Springs Arts Center is sponsoring a concert by internationally renowned duo-pianists, Markowski and Cedrone, performing on Baldwin concert grands in the Crystal Ballroom of the Arlington Hotel, Sunday, June 12th at 3:00 p.m. For ticket information call the Arts Center at 624-9836.

For those who remember the days of summer concerts in the park, the Arts Center will present the Hot Springs Community Band in a series of free open air concerts of light classics and popular favorites on Arlington Lawn at 7:00 p.m. on June 6, June 20, July 11, August 8, and August 22. Bring your blankets or lawn chairs to sit upon as you enjoy the concert.

We will be pleased to give you additional information on theatre and exhibitions. Please call the Hot Springs Arts Center at 624-9836.

ARKANSAS INSIGHTS

Arkansas' Heritage and its contribution to the Arts is shown daily, except Sunday, in the air-conditioned Lamar Bathhouse screening room.

9:40 a.m. "*Hot Springs, 1939*," a 28-minute 1939 Technicolor film, rescued by the Garland County Historical Society and rehabilitated by the Hot Springs Arts Center, offers a rare glimpse of the pre-World War II spa and its world famous bathing regimen.

10:40 a.m. "*Arkansas, A Special Place*," a 30-minute award winning presentation, traces our State's history from Hernando DeSoto's legendary visit to Hot Springs' "Valley of the Vapors," to important Civil War battle sites up to our present day fame as a visitor's paradise. The film is courtesy of the **Arkansas Educational Television Network**.

1:40 p.m. "*Arkansas in Residency*," a 30-minute film which shows the work of four Arkansas Artists in educational programs produced by the Arkansas Arts Council and the National Endowment for the Arts.

2:40 p.m. "*Arkansas People*," an 18-minute photographic essay revealed through portraits with commentary by noted Arkansas photographer, Andrew Kilgore.

GULPHA GORGE

*Located in Gulpha Gorge Campground
Off State Highway 70B*

QUARRY HIKES

*Wednesday and Saturday
9:00 a.m.*

Total length of hike approx. 2 miles

For the explorer, leaving from the Gulpha Gorge Amphitheater, your guided tour will take you up Indian Mountain to a whetstone quarry and the Indian Quarry, two of the few remaining. You will hear how the Caddo Indians and later settlers used the novaculite. Sturdy shoes and knee socks or long pants are advised.

EVENING CAMPFIRE PROGRAM

*Gulpha Gorge Amphitheater
Tuesday, Thursday, Saturday and Sunday
8:30 p.m.*

Gulpha Gorge provides you with information on growth and development of the American Spa, area wildflowers, and edible plants, wildlife and the impact of early visitors to other spring resorts in the area and the Ouachita Mountains. Each evening's subject will be posted on the campground bulletin board or can be inquired about at the Visitor Center. The programs are also published each week in the local newspaper in the Sunday edition.

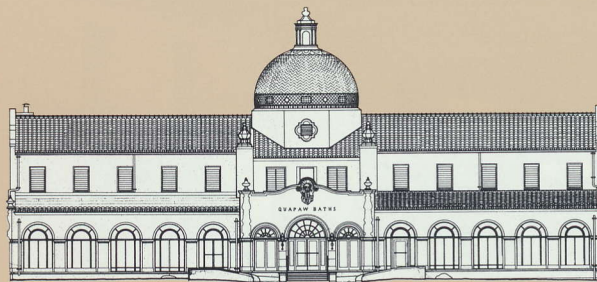
ARRIVING LATE IN THE DAY?

Bathhouse Row and the Grand Promenade above the city give visitors an opportunity to take leisurely walks to get a feeling of the past and the future of this internationally known city. The Grand Promenade offers views of the cascade, from the flow of several springs, and two springs which are open for viewing at all times. It also allows observation of several of the covered springs which are diverted to the system utilizing the water for drinking and bathing.

TAKE PRIDE IN AMERICA

National Parks are among America's greatest national resources, which belong to all of us and future generations. It is up to us to keep Hot Springs National Park preserved for ourselves and our children. Enjoy the plants, animals, rocks and springs, but be sure to leave them where you find them. Please dispose of your own trash as well as that of others in proper places. Any vandalism should be reported to a park ranger or by calling 624-3124.

TAKE PRIDE IN AMERICA! Help preserve our country's natural and cultural resources!



THERMAL FEATURES TOUR

*Everyday, every hour
10:15 a.m. to 4:15 p.m.
No admission charge*

For those interested in the famous thermal springs in Arkansas' only National Park, this tour is for you. Beginning at the south end of the Quapaw Bathhouse at the canopied sign, your guide will reveal the changes in the area over the years as you visit the Indian Spring in the Quapaw basement, the open springs and the cascade display spring.

WHITTINGTON PARK

Located on north end of downtown

The stone bridges and small running stream make this oasis amid the city the perfect complement to health conscious persons who have come to experience the sense of well-being, exercise, thermal bathing and nature combine to provide.

Created in the 1800's, this formal landscaped park was patterned after the other international spa areas. The water park was reworked in the 1930's to become an entertainment and recreation area. In 1980, exercise/workout facilities were incorporated into the already popular 1.2 mile jogging trail, which had its beginning as a bridle path.

Access may be made midway through the park to a hiking trail which leads to observation points on West Mountain overlooking the greater Hot Springs area. From there you may look across to Hot Springs Mountain where one of the Resort City's landmarks has for decades been the first welcoming beacon to visitors. The present Hot Springs Mountain Tower is now a contemporary version of previous wooden and steel towers and is accessible by a 3-minute drive up Fountain Street by the Arlington Lawn. Whether by stairs or rapid elevator you will enjoy one of our state's most beautiful examples of a natural 360 degree vista from atop the 216 ft. observation tower.



NATIONAL PARK VISITOR CENTER

*Central and Reserve Avenues
Open daily, 8:00 p.m. to 5:00 p.m.
No admission charge*

This is an excellent place to begin your visit. Here you can view a 12-minute introduction to the "Valley of the Vapors," a brief history of Hot Springs National Park, and an outline of points of interest.

The Visitor Center also has maps and informational pamphlets on the National Park as well as attractions in the city and surrounding area. There is additional information through exhibits and an area offering publications on the cultural and natural history of the hot springs and the Ouachita Mountains.

The National Park Service announces that next year the Visitor Center will be located just around the corner in the Fordyce Bathhouse, in the center of Bathhouse Row, about two blocks from the existing Visitor Center. The new Fordyce Bathhouse Visitor Center will be an outstanding historical and interpretive display facility in the National Park. The finest of the bathhouses will be restored and refurbished to retain most of its original character. It will have exhibits and audiovisual programs in appropriate places.

CREDITS

COVER ILLUSTRATION

Magnesia Spring from Cutter's Guide to the Hot Springs of Arkansas, 1882 (Mary D. Hudgins Collection)

PHOTOGRAPHS

*Downtown Hot Springs-National Park Service
National Park Visitor Center-National Park Service*

ARCHITECTURAL DRAWINGS

Lamar - Historic American Buildings Survey, National Park Service, Dan Wininski, 1984.

Quapaw - Historic American Buildings Survey, National Park Service, Brian McCormick, 1984.

SUMMER SEASON PROGRAMS

Hot Springs Arts Center
815 Whittington
Hot Springs, Arkansas 71901