



# The Singing Sands

Fall 2006 through Spring 2007  
Vol. 27 No. 1

## Mission of the National Park Service

The National Park Service preserves unimpaired the natural and cultural resources and values of the national park system for the enjoyment, education, and inspiration of this and future generations. The Park Service cooperates with partners to extend the benefits of natural and cultural resource conservation and outdoor recreation throughout this country and the world.

## Mission of Indiana Dunes National Lakeshore

The mission of Indiana Dunes National Lakeshore is to preserve for the educational, inspirational, and recreational use of the public certain portions of the Indiana Dunes and other areas of scenic, scientific, and historic interest and recreational value in the State of Indiana.

## Contact Information

PHONE  
219-926-7561 x225 or  
1-800-959-9174

ADDRESS  
National Park Service  
1100 N. Mineral Springs Rd.  
Porter, IN 46304

E-MAIL  
indu\_communications@nps.gov

WEBSITE  
www.nps.gov/indu

TO REPORT CRIMINAL OR  
SUSPICIOUS ACTIVITY CALL  
1-800-PARKTIP (727-5847)

## In This Issue

page 2 Protect Yourself

page 3 Public Programs

page 4&5 40th Anniversary

page 6 Education Programs

page 7 Partnerships

page 8 Park Map

## Public Invited to New Visitor Center Dedication



Conceptual model created by Gerometta and Kinel Architects

©Bob Sirko

For eight years, Indiana Dunes National Lakeshore and the Porter County Convention and Visitor Commission (Commission) have been working towards a shared visitor center; and on November 29, the wait will be over! On that date, you are invited to join in the festivities, beginning with the ribbon-cutting ceremony for the \$2.5 million, 12,000-square-foot Dorothy Buell Memorial Visitor Center (Visitor Center). You are also invited to the National Lakeshore's 40th Anniversary Open House on December 2. Ideally located at Indiana 49 and U.S. Highway 20, this new Visitor Center is "expected to attract 300,000 visitors annually, almost four times the combined number who visited the National Lakeshore and Commission visitor centers at their original locations," according to National Lakeshore Superintendent Dale Engquist.

With its barrel ceiling made of Ponderosa pine and multimedia theater, the Visitor Center is a must see and do! It truly provides one-stop shopping for visitors seeking up-to-date information about the Indiana dunes and related Porter County attractions and services.

### The Visitor Center features:

- An information desk staffed by park rangers;
- Educational and interpretive merchandise;
- National Lakeshore brochures, State Park brochures, and publications about attractions, services, and events in Porter County and Northwest Indiana;
- A theater where films about the natural and cultural histories of the National Lakeshore are shown daily and interpretive programs are offered;

- Orientation and safety exhibits;
- A 1,400-square-foot exhibit hall, which will, beginning in November, showcase artwork from the National Lakeshore's Artist-In-Residence program;
- A 24-hour vestibule with visitor resources, including a phone that connects visitors directly to lodging and camping;
- Lobby exhibits that promote the area's special events; and
- Public programs about the natural and cultural histories of the National Lakeshore, Indiana Dunes State Park, and Porter County.

Almost immediately following its establishment in 1971, the original Dorothy Buell Memorial Visitor Center had outgrown its location in the small church on the corner of U.S. Highway 12 and Kemil Road in Porter County. Tucked away in its hard-to-find location, only about 60,000 visitors annually found their way to the center. In 1998, the National Lakeshore was approached by the Commission, and the concept of a joint facility in a more prominent location was explored. Both wanted to meet visitor expectations and teach visitors about Indiana Dunes. Because the Commission shared similar visitor experience goals and had a similar problem—a small visitor center well-off the beaten path—the two entities, working together, were a good fit. In the Commission, the National Lakeshore found a partner who was willing to:

- Secure funds to build a visitor center, using mostly federal highway transportation enhancement fee grant money;
- Lease space in the Visitor Center to the National Lakeshore; and
- Allow the federally mandated name, the "Dorothy Buell Memorial Visitor Center," to be transferred to the new Visitor Center from the existing facility in the National Lakeshore.

Superintendent Engquist explains that, "Partnering with the Commission creates a win-win situation for all. Visitors will benefit from a one-stop information center. The National Lakeshore will spread its National Park Service preservation and stewardship messages to new audiences while the Commission will promote Porter County attractions to more people."

Furthermore, the Commission's Executive Director Lorelei Weimer says, "The partnership with the National Lakeshore is a definite enhancement to the Commission's mission; each organization can coexist alongside each other, strengthening and creating dynamic relationships between our communities and their environments while maintaining the unique quality of life in Porter County."



NPS Collection

Left to Right - Indiana Dunes State Park Property Manager Brandt Baughman, Commission Executive Director Lorelei Weimer, and National Lakeshore Superintendent Dale Engquist prepare to ascend up a construction lift to sign the Visitor Center's commemorative beam.

# Protect Yourself

## WATER SAFETY

Do not swim when **Rip Current** warnings are posted or in large crashing waves, which can cause rip currents. These strong currents rushing out into Lake Michigan can carry even the strongest swimmer with them. If you get caught in a rip current, do not try to swim against it. Instead, swim parallel to the shoreline until you are out of the current.

Lake Michigan is generally clean and safe for swimming, but it can become contaminated with harmful bacteria. Do not enter the water when a health hazard warning is issued or posted. If you do, you risk intestinal illness, skin rash, or eye, ear, or respiratory infections.



NPS Collection

A young visitor learns about deadly rip currents by reading one of the park's many safety signs that are located near the beaches.

## INSECT BITES AND STINGS

Avoid diseases carried by biting pests by checking yourself for **ticks** after being outdoors. Use insect repellent and wear light colored, long-sleeved shirts, and tucked-in pants to help prevent both tick and mosquito bites. To help prevent **mosquito** bites, limit outside activities at dusk and dawn when mosquitoes are most prevalent.

Beware of **yellow jackets** and other **stinging insects**. Avoid loose-fitting clothing and bright, flowered prints. Do not wear sandals; avoid wearing perfume, lotion, and hairspray. Never swat at a flying insect. Look for insects before you drink from open beverage cans. When eating outdoors, keep food covered. Insect repellents **DO NOT** work against stinging insects. Seek immediate medical attention if you are stung and have symptoms of a systemic allergic reaction. Systemic reactions include hives, swelling of the eyes, lips, tongue, throat or sting area, intense general itching, difficulty breathing, irregular heartbeat, nausea, and loss of consciousness.

## HEAT ILLNESSES

Symptoms of **heat exhaustion** are exhaustion, nausea, dizziness, a rapid pulse, and pale and clammy skin. If the body is not cooled, a potentially fatal **heat stroke** may occur. This is a medical emergency and must be treated immediately. The onset of a heat stroke is marked by the absence of sweat and skin that is flushed and hot. To prevent these illnesses, take it easy on hot days, seek shade, drink lots of water, and dress lightly in layers.

## Visitor Center Dedication

continued from pg. 1

Superintendent Engquist is especially pleased with the new opportunities that the increased visitor center space will offer. He says, "With what is probably the smallest exhibit area of over 380 National Park Service sites in the original visitor center, I can't wait to tell Indiana Dunes' amazing story of diversity in the spacious 1,400-square-foot exhibit space in the new visitor center." Additionally, the Indiana Dunes State Park's themes and orientation will be woven into the main exhibit hall and lobby exhibits.

The Save the Dunes Council is leading a "best management practices" project that will minimize the impact of the Visitor Center's construction on water quality. Construction of the Visitor Center, which is located within the Dunes Creek watershed, could have potentially impacted water quality in Dunes Creek and, ultimately, Lake Michigan. A rain garden, two-stage ditch, and two vegetated swales on the grounds surrounding the Visitor Center are being employed to increase infiltration and to absorb pollutants from rainwater runoff before the pollutants can reach Dunes Creek and Lake Michigan.

Don't miss this new Visitor Center at Indiana Highway 49 and U.S. Highway 20! And be sure to return for more visits and to see future state-of-the-art educational exhibits.



NPS Collection

Stay off the lake ice! It is full of hidden thin spots and gaps that people can fall through, leading to death.

## WINTER SAFETY

**Do not sled.** Due to hidden dangers, often partially covered by shifting sands, sledding, inner-tubing, tobogganing, and snowboarding are prohibited in the park.

**Stay off the ice.** When frozen, Lake Michigan looks much like the Arctic. Unlike the arctic landscape that it mimics, this ice is full of hidden thin spots and gaps (often further hidden by a layer of snow). Venturing out onto the ice is a sure way to risk death.

**Stay warm.** Dress in layers of loose-fitting clothes (including headwear) and keep your feet and hands dry. Minimize exposed skin. Keep an eye on the wind chill to help prevent frostbite. Gently re-warm any waxy-looking skin, and seek medical attention.

Dressing properly can also prevent hypothermia. Early signs of this potentially fatal cooling of the body include intense shivering, loss of coordination, and confusion. If you see symptoms, seek warmth and immediate medical care. Prime temperatures for hypothermia are actually above freezing between 30 – 50°F. Don't hike alone.

# Enjoy Your Park

## PARK HOURS

Unless posted otherwise, all public parking areas are open from sunrise to sunset.

## VISITOR FACILITIES

### Dorothy Buell Memorial Visitor Center

Open daily. Closed Thanksgiving, Christmas, and New Years Day.

### Dunewood Campground

Open April 1 through October 31. \$15/day

### Paul H. Douglas Center for Environmental Education

Open for scheduled education groups and special public events. Call 219-926-7561, x243 for more information.

### Indiana Dunes Environmental Learning Center

Open for scheduled education groups. Call 219-395-9555 for more information.

## REGULATIONS

**Pets** are allowed on most trails, but they must be on a leash at all times. Pets are prohibited on the Ly-Co-Ki-We (horse/ski) trail. During the swim season, pets are

prohibited on most beaches. Only Mount Baldy and Central Ave. beaches are open all year to pets.

All **fishing** requires a valid state license and must be in accordance with state regulations. Contact the park or Indiana's Department of Natural Resources for more information. Smelt fishing also requires a Smelt Season Fire Permit. For information on obtaining a Smelt permit call the Ranger Station at 219-926-7561, x311.

**Horseback riding** is permitted only on the Ly-Co-Ki-We Trail between March 16 and December 14.

**Bicycles** are permitted on Calumet Bike Trail, the West Beach Trail between Ogden Dunes and West Beach, and the Marquette Trail between West Beach and Grand Blvd. Bicycles are prohibited on all other park trails.

**Cross-country skiing** is permitted on designated trails.

All **watercraft** are prohibited from all designated swimming beaches. Designated swimming beaches are identified by buoys from May 1 through September 30. Motorized watercraft are prohibited in Long Lake.

**Alcoholic beverages** are prohibited at the Dunewood Campground, West Beach, Porter Beach, and in all park buildings.

**Glass containers** are prohibited on all beaches.

# DOROTHY BUELL MEMORIAL VISITOR CENTER

## Dedication Ceremony

November 29, 3 p.m. — 8 p.m.

Following the ribbon-cutting ceremony at 3 p.m., tour the facility, meet park partners, and view partner displays in the Exhibition Hall.

## 40 Years of Dunes Stewardship

December 1, 7 p.m. — 8 p.m.

Enjoy a presentation highlighting the 40 years of Indiana Dunes National Lakeshore.

## Open House at the Visitor Center

December 2, 1 p.m. — 4 p.m.

Tour the center, and view the displays of partner organizations.

1420 Munson Rd • Porter, IN 46304 • 219-926-7561  
Off I-94, at Highways 49 and 20



# Fall 2006 - Spring 2007 Ranger-Guided Program Schedule

EVENT DATE & TIME	PROGRAM	DESCRIPTION	LOCATION
<b>Saturdays &amp; Sundays</b> 4 p.m. – 5 p.m. Sept. & Oct. except Sept. 16–17	Feeding Time	Help Farmer Jim feed the farm animals.	Chellberg Farm Barn
<b>Saturdays</b> 9 a.m. – 10:30 a.m. Sept. & Oct., except Sept. 16	Trekking the Bog	Learn about the special adaptations of a floating environment.	Meet at Dorothy Buell Visitor Center and carpool to the bog.
<b>Sundays</b> 2 p.m. – 3:30 p.m. Sept. & Oct. except Sept. 17	Trekking the Bog	Learn about the special adaptations of a floating environment.	Meet at Dorothy Buell Visitor Center and carpool to the bog.
<b>Saturdays</b> 1:30 p.m. – 3 p.m. Sept. through Nov., except Sept. 16	Ranger-led walk	Explore the forest, wetland, and blowouts near the visitor center to learn about the plants and animals.	Dorothy Buell Memorial Visitor Center
<b>Saturdays</b> 7:30 p.m. – 8:30 p.m. Sept. & Oct., except Sept. 16	Evening Campground program	Ranger selected topics include history, activities to do, and study of local flora and fauna. See subjects posted on bulletin boards.	Dunewood Campground Amphitheater
<b>3rd Friday of every month</b>	Music Heritage Series	Local musicians play to monthly themes related to dune culture.	Dorothy Buell Memorial Visitor Center
<b>Sundays</b> 1 p.m. – 4 p.m. Sept. & Oct., except Sept. 17	Open House at Bailly Homestead & Chellberg Farm	Tour the Chellberg and Bailly houses. Learn of local 1800s-1900s fur trading and farming.	Bailly Homestead and Chellberg Farm
<b>Saturdays &amp; Sundays</b> 3 p.m. – 4 p.m. Nov. through May	Feeding Time	Help Farmer Jim feed the farm animals.	Chellberg Farm Barn
<b>Sundays</b> 1:30 p.m. – 3 p.m. Nov. through May	Ranger-led walk	Explore the forest, wetland, and blowouts near the visitor center to learn of the plants and animals that live here.	Calumet Dune Interpretive Center (Hwy. 12 and Kemil Rd.)
<b>Saturdays</b> 1:30 p.m. – 3 p.m. Dec. through May	Ranger-led walk	Explore the forest, wetland, and blowouts near the visitor center to learn of the plants and animals that live here.	Calumet Dune Interpretive Center (Hwy. 12 and Kemil Rd.)
<b>Sunday, March 26,</b> 11 p.m. – 3 p.m.	Horsing Around: Sowing Oats	Watch as Farmer Jim and the draft horse team plants the grain crops for the farm.	Chellberg Farm
<b>Saturday, April 15</b> 1 p.m. – 3 p.m.	Horsing Around: Behind the Plow	Watch as Farmer Jim using horse and plow prepares the crop fields for planting.	Chellberg Farm
<b>Sunday, May 7</b> 1 p.m. – 3 p.m.	Planting Corn & Sorghum	Watch as Farmer Jim plants sorghum for the farm.	Chellberg Farm
<b>Saturdays</b> <b>Beginning May 13</b> 9 a.m. – 10:30 a.m. & 2 p.m. – 3 p.m.	Trekking the Bog	Learn about the special adaptations of a floating environment.	Meet at the Calumet Dune Interpretive Center (Hwy. 12 and Kemil Rd.) and carpool to the bog.
<b>Sundays</b> <b>Starting May 14</b> 9 a.m. – 10:30 a.m.	Trekking the Bog	Learn about the special adaptations of a floating environment.	Meet at the Calumet Dune Interpretive Center (Hwy. 12 and Kemil Rd.) and carpool to the bog.
<b>Saturdays &amp; Sundays</b> <b>May</b> 4 p.m. – 5 p.m.	Feeding Time	Help Farmer Jim feed the farm animals.	Chellberg Farm barn

## Fall 2006 - Spring 2007 Special Events

EVENT DATE & TIME	PROGRAM	DESCRIPTION	LOCATION
<b>Saturday &amp; Sunday,</b> <b>September 16–17</b> 11 a.m. – 5 p.m.	Duneland Harvest Festival	Observe 1800s voyageur encampments and turn-of-the-20th century farm skill & craft demonstrations.	Bailly Homestead & Chellberg Farm
<b>Friday, October 27</b> 6:30 p.m. – 8:30 p.m.	Sights & Sounds of Halloween	Young, costumed children join the rangers for night hikes and animal stories.	Paul H. Douglas Center
<b>Sunday, December 10</b> 1 p.m. – 4 p.m.	Christmas Traditions in the Dunes	Celebrate 1800s French "Joyeaux Noel" and Swedish "God Juel."	Bailly Homestead & Chellberg Farm
<b>Saturday &amp; Sundays</b> <b>March 3, 4, 10 &amp; 11</b> 10 a.m. – 4 p.m.	Maple Sugar Time Festival	Observe the evolution of maple sugaring from American Indian methods, to pioneer and 1930s techniques.	Chellberg Farm
<b>Saturday, April 7</b> 8 a.m. – 1 p.m.	Native Plant Sale	Purchase any of more than 100 varieties of prairie or woodland flowers, shrubs, and trees.	Indiana Dunes State Park
<b>Saturday, April 21</b> 12 p.m. – 3 p.m.	Green Gary Day	Join us for Earth Day family fun activities.	Marquette Park & Paul H. Douglas Center

# Celebrating 40 Years



NPS Collection

### Stephen Mather Leads Tour of Indiana Dunes

Stephen Mather, first director of the National Park Service (far left) with Colonel Richard Lieber, Father of the Indiana State Park System, leads a tour of park advocates through the Indiana Dunes after the October 1916 hearings in Chicago for a "Sand Dunes National Park." Although World War I defense priorities crippled the Indiana Dunes national park movement, efforts to establish the dunes as a unit of the National Park System were revived after World War II.



NPS Collection

### The National Lakeshore's First Purchase

Ed's Trading Post, on the southwest corner of U.S. Highway 12 and Wagner Road in Porter, was the first tract purchased after the park's authorization. Businesses along U.S. 12 were among the first properties bought at fair market value and demolished for the park's long-term goal of natural restoration of the landscape.



NPS Collection

### Dorothy Buell Strives to Save the Dunes

Secretary of Interior Stuart Udall presents an award to Senator Paul H. Douglas and Dorothy Buell. Buell, an English teacher and Ogden Dunes resident, and a cadre of environmentalists rekindled the crusade for an Indiana Dunes national park, founding the Save the Dunes Council in 1952. President Buell and council members sought to preserve land in the dunes before more was commercially exploited for residential and industrial use.



NPS Collection

### Dorothy Buell (left) and James Whitehouse (right)

Pictured here with Dorothy Buell, in front of what would be the park's first visitor center, James R. Whitehouse became the first National Lakeshore superintendent in 1970. Whitehouse worked with Save the Dunes and others to combat potential threats to the lakeshore such as construction of the Bailly I nuclear power plant. Whitehouse managed park operations until the park's present superintendent, Dale Engquist, succeeded him in 1983.

### Paul H. Douglas Pushes His Dunes Bill

"I will feel that my life has not been in vain," said Illinois Senator Paul Douglas, hoping for the passage of his legislation for Indiana Dunes National Lakeshore. Douglas ensured that the Burns Waterway Harbor (Port of Indiana) could only happen if the U.S. Congress authorized the National Lakeshore, which the 89th Congress did in 1966.



NPS Collection



NPS Collection

### Habitat Restoration Is Ongoing

Building demolition and habitat restoration started in 1970 soon after the National Lakeshore's establishment. As buildings and roads are demolished, exotic plants and trees are removed, and native vegetation is planted, the park land is returned to prairie, woodland, and wetland.

# of Dunes Stewardship



NPS Collection

### Chellberg Farm Acquisition

The 1972 acquisition of the Chellberg Farm heralded an era of new environmental and interpretive programs at the park. The 80-acre farm, established in 1869 by Johanna and Anders Chellberg, represents the area's agricultural and Swedish heritage and is the scene of popular community festivals.



NPS Collection

### Superintendent Dale Engquist (left) with Polish Sister Park Director Jerzy Misiak.

For 23 years, Superintendent Dale Engquist has developed partnerships that have fostered better preservation of park resources and improved outreach to the international and local communities. Some of his nontraditional partnerships include a Sister Park in Poland, Kampinos National Park, the Field Station Cooperative Preschool, the Lake County Solid Waste Management District, and the Historic Landmarks Foundation of Indiana. He has forged dozens of other partnerships that have enhanced the National Lakeshore's mission.



NPS Collection

### Mount Baldy Beach Nourishment

Battling beach erosion has always been a park priority. In 1974, U.S. Army Corps of Engineers began working with the National Lakeshore on beach nourishment at Mount Baldy to mitigate shoreline erosion caused by the Michigan City Harbor structures.



NPS Collection

### Indiana Dunes Environmental Learning Center

Founded in 1998, the Indiana Dunes Environmental Learning Center stands at the site of the historic Good Fellow Club Youth Camp, built in 1941 by U.S. Steel for employees' children. The learning center immerses students and educators from Indiana and Illinois in a residential program that cultivates stewardship of the environment along the southern shores of Lake Michigan.



NPS Collection

### Expansion Bill Adds Miller Woods

Congress approved Indiana Dunes National Lakeshore's first expansion bill in 1976, adding the West Unit and Heron Rookery to the park. Although the 1966 authorizing legislation included only 8,330 acres of land and water, subsequent expansion bills (1976, 1980, 1986, and 1992) have increased the park's size to more than 15,000 acres.



©CHESTERTON TRIBUNE, ALEXANDRA NEWMAN

### New Visitor Center Groundbreaking

The Porter County Convention, Recreation and Visitor Commission broke ground for the new Dorothy Buell Memorial Visitor Center near State Road 49 and U.S. Highway 20 in Porter in 2005. The new visitor center, a partnership with the National Lakeshore opening in November 2006, will include exhibits, information on the Dunes and Porter County, an auditorium, and a book store.

# Education Programs



## Who do we serve?

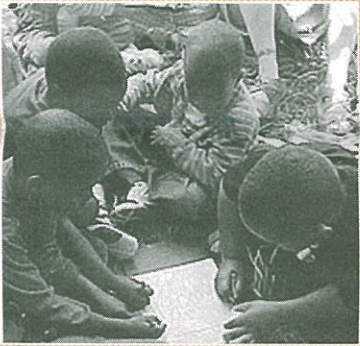
Any organized group such as schools (K-12), scouts, university classes, organizations, and preschools.

## What do we provide?

Park rangers lead a variety of free, one to three-hour long programs throughout the park. Organized groups can choose from a variety of experiences such as hiking on marked trails to the top of Mount Baldy, exploring the Miller Woods oak savannas, following in a fur trader's footsteps, or helping feed the Chellberg Farm animals. Hands-on programs allow students to explore and learn in their national park. The programs help teachers meet state content standards.

## How do you reserve a ranger-led program?

Call 219-926-7561, x243, or 1-800-959-9174, x243.



## When are programs offered?

Year-round. The park begins taking scheduling requests for the academic year in late August.

## Where are programs offered?

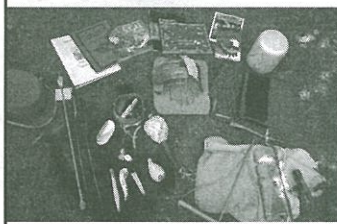
At the cultural history sites of Chellberg Farm and Bailly Homestead, along the Mount Baldy and West Beach shorelines, and at the Calumet Dune Interpretive Center and the Douglas H. Center for Environmental Education in Gary, Indiana.

## Where can you go for more information?

[www.nps.gov/indu/for teachers](http://www.nps.gov/indu/for%20teachers) or e-mail the national lakeshore at [INDU\\_Interpretation@nps.gov](mailto:INDU_Interpretation@nps.gov). The lakeshore's website has interactive games for students, activity guides for teachers to download, and a complete list of programs.

## Teacher Workshops

The national lakeshore partners with education institutions to provide professional development opportunities within the park. Year-round workshops focus on various themes. Educators can earn graduate credit through local universities for their participation. For a list of upcoming workshops, visit [www.nps.gov/indu/forteachers/professionaldevelopment.htm](http://www.nps.gov/indu/forteachers/professionaldevelopment.htm), or contact the education office at 219-926-7561 x243, or the Great Lakes Research and Education Center at 219-926-7561 x290.



## Classroom Resources

The national lakeshore loans videos and traveling trunks to regional educators without charge; however, educators must pick them up and return them to the park. For a complete list of available resources, visit [www.nps.gov/indu/forteachers/materialsforloan.htm](http://www.nps.gov/indu/forteachers/materialsforloan.htm) or contact the GLREC at 219-926-7561 x290.

## Become a Junior Ranger!

Children of all ages can participate in this fun, free, family-oriented program. Stop by the national lakeshore's visitor center to pick up an activity guide for the beach, historic sites, or the entire park, and learn about what makes Indiana Dunes a special place worth preserving. After completing the activities, stop by the visitor center for a Junior Ranger badge.



## Explore the Park on Your Own!

Many educators wish to bring their groups to the dunes on their own. National lakeshore activity guides are available at [www.nps.gov/indu/forteachers/lessonplansandteacherguides.htm](http://www.nps.gov/indu/forteachers/lessonplansandteacherguides.htm).

Interactive games, such as the **Web Ranger Challenge** at [www.nps.gov/indu/forteachers/onlinegames.htm](http://www.nps.gov/indu/forteachers/onlinegames.htm), are recommended to help students prepare school groups and families for their visit to the national lakeshore.



Take the **Water Safety Challenge!** Students of all ages can learn about the importance of water safety from this interactive web quiz. The game is designed to teach some of the basic safety rules of Lake Michigan swimming, rip currents, and beach-going. Check out the web site at <http://www.nps.gov/indu/watersafety/index.htm>.



## What other resources are available for educators?

**RESIDENTIAL PROGRAMS AT THE INDIANA DUNES ENVIRONMENTAL LEARNING CENTER**  
Indiana Dunes Environmental Learning Center provides a residential environmental education programs within the national lakeshore. Programs are available for 4th grade and beyond. Participants stay overnight in cabins. **Contact the Learning Center at [info@duneslearningcenter.org](mailto:info@duneslearningcenter.org), or call 219-395-9555 for more information or to reserve a program.**

## NEEDED

## VOLUNTEER HELP

Many individuals with a passion for the Indiana Dunes National Lakeshore donate thousands of hours each year as volunteers. There are always lots of volunteer opportunities at the national lakeshore. Whether you want to help indoors or out, we probably have something that you will find both interesting and rewarding. Volunteer activities include greeting visitors at the information desk, leading tours for school groups, restoring natural habitats, and helping with festivals. If you can give just a few hours on a regular basis, you can make a difference. For more information on the volunteer program, please contact the national lakeshore's Volunteer Coordinator Cliff Goins at 219-926-7561, x246 or [cliff\\_goins@nps.gov](mailto:cliff_goins@nps.gov).



NPS Collection

Volunteer Gabrielle O'Connor cuts down an invasive black locust tree at Tolleston Dunes.

### FACILITY AND GROUNDS ASSISTANTS

Volunteers are needed to assist maintenance staff with trail maintenance, painting, raking leaves, cleaning windows, picking up litter, cleaning fire pits, and doing light construction work. Contact Ken Ginger at 219-926-7561 x510 or [ken\\_ginger@nps.gov](mailto:ken_ginger@nps.gov).

### PRESERVATION ASSISTANTS

Help us continue the preservation of Margaret Larson's home site. In fall 2005, the barn preservation began with the partial roof reconstruction. With your help, we can complete the roof this fall. In 2007, we would like to begin transforming the small summer kitchen into a garden equipment storage area. These projects require volunteers with carpenter skills. Painting skills are also needed for the summer kitchen. Contact Judy Collins at 219-926-7561 x343 or [judith\\_collins@nps.gov](mailto:judith_collins@nps.gov).

### VISITOR CENTER ASSISTANTS

Volunteers are needed to assist interpretive rangers at the new Dorothy Buell Memorial Visitor Center. Volunteer duties include answering the telephone and answering questions at the visitor information desk, tracking visitor statistics, stuffing envelopes, organizing publications and supplies, and stocking brochure racks. If you would like to volunteer to do clerical and/or public contact work 4 hours or more per week, contact Ryan Koepke at 219-926-7561 x226 or [ryan\\_koepke@nps.gov](mailto:ryan_koepke@nps.gov).

### RESOURCE MANAGEMENT ASSISTANTS

Volunteers are needed to help protect the national lakeshore from the threats of invasive species, pollution, and habitat fragmentation. No specific experience is needed. Positions include greenhouse assistants (propagate plants), weather data assistants (collect weather and pollution data), field assistants (restore prairies, woodlands, and wetlands), and wildlife assistants (monitor wildlife populations). Contact Laura Thompson at 219-926-7561 x337 or [laura\\_thompson@nps.gov](mailto:laura_thompson@nps.gov).

# Park Partners

## Friends of Indiana Dunes, Inc.

### FRIENDS OF Indiana Dunes

*Our mission is to enhance and foster understanding, appreciation, and enjoyment of the Indiana Dunes through financial and volunteer support of the state and national parks.*

The Friends of Indiana Dunes are just that—more than 600 individuals who care about, preserve, and promote the Indiana Dunes National Lakeshore and Indiana Dunes State Park.

The Friends partner with both parks to help support a host of annual special events such as Duneland Harvest, Maple Sugar Time, and Kids' Fun Fest. The Friends also provide scholarships for children to attend the Indiana Dunes Environmental Learning Center, host guest speakers at the parks, purchase interpretive items and publications, and contribute to outreach efforts. To learn more or to become a Friends member, contact:

#### The Friends of Indiana Dunes, Inc.

P.O. Box 166  
Beverly Shores IN 46301  
219-926-7561 x230  
[www.duneland.com/friends.htm](http://www.duneland.com/friends.htm)

#### MEMBERSHIP APPLICATION

##### Regular Membership

Individual/Family	\$ 20
Senior Citizen	\$ 15
Business/Corporation	\$100

##### Sustaining Membership

Individual/Family	\$ 40
Business/Corporation	\$250
Additional Contribution	\$ _____

Name: \_\_\_\_\_

Address: \_\_\_\_\_

City: \_\_\_\_\_

State: \_\_\_\_\_ Zip: \_\_\_\_\_

Home Phone: \_\_\_\_\_

Office Phone: \_\_\_\_\_

## Indiana Dunes Environmental Learning Center



*Our mission is to explore the dynamic relationship between people and their environments.*

The Indiana Dunes Environmental Learning Center was established in 1998 as a non-profit environmental education center. As a partner with the Indiana Dunes National Lakeshore, the learning center offers hands-on experiences for students and educators through environmental education programs that explore the national lakeshore's resources.

Much of the learning center's programming is dedicated to their "Frog-in-the-Bog" residential program for 4th through 6th grade students. This 3-day, 2-night experience features the dunes' natural and cultural history, the interconnection of human and natural environments, and the rich biodiversity found in the habitats of Lake Michigan's southern shores. The program is guided by several national and state curriculum standards for science, math, social studies, and language arts.

Other programs offered include Science Olympiad Team Training, Winter Survival in the Dunes, and DuneSCOPES, a program for high school students that won a National Association of Interpretation award for Outstanding Interpretive Program.

The learning center, in conjunction with the national lakeshore, is also a regional resource with academic and professional training for K-12 classroom teachers and non-formal educators. Workshops feature experts in various fields of study, hands-on activities, and adventures with the national lakeshore.

Learning center facilities include 10, 8-person modern cabins equipped with heating, air conditioning, and a private bath. Cowles Lodge serves as a multi-purpose dining/education center with a full-service kitchen.

#### INDIANA DUNES ENVIRONMENTAL LEARNING CENTER

700 Howe Road  
Chesterton, IN 46304  
219-395-9555  
[www.duneslearningcenter.org](http://www.duneslearningcenter.org)

## Indiana Dunes State Park

# DNR

Indiana Department of Natural Resources  
Division of State Parks and Reservoirs

*Our mission is to manage and interpret Indiana Dunes State Park's wildlife and natural and cultural resources, provide for compatible recreational opportunities, and sustain the integrity of these resources for future generations.*

Established in 1925, Indiana Dunes State Park is one of 25 Indiana state parks administered by the Department of Natural Resources and Indiana Division of State Parks and Reservoirs. Indiana is one of the leading state park systems for self-sufficiency and locating parks close to residents. There now is a state park within a one-hour drive of every Indiana resident.

Indiana Dunes State Park consists of 2,182 acres of beach, black oak forest, sand dunes, button-bush marsh, and wooded wetlands. Dunes Nature Preserve, encompassing 1,530 acres and located within the state park boundaries, offers opportunities to explore pristine, unique landscapes. The state park contains some of the most diverse flora and fauna of the Midwest. It is also renowned throughout the Midwest for its birding.

The state park boasts a year-round campground, swimming beach with lifeguards, nature center, more than 16 miles of hiking/skiing trails, and many picnic shelters and areas. During the summer, a beach pavilion provides a shelter, snack bar, gift shop, and restrooms with outside showers. The nature center has a library, bird observation room, children's activity corner, information desk, and exhibits about natural and cultural history. Private, public, and school programs are held year-round. Camping reservations can be made by calling 1-866-622-6746. There is a park entrance fee. For more information, contact the park.

1600 North 25 East • Chesterton IN 46304  
219-926-1952 [www.IN.gov/dnr](http://www.IN.gov/dnr)

#### INDIANA DUNES STATE PARK

Park Hours: 7 a.m. — 11 p.m.  
Office Hours: 8:30 a.m. — 4 p.m.

#### Entrance Fees

Daily:	\$10.00 with out-of-state plates
	\$4.00 with IN plates, Mon.-Thurs.
Weekends:	\$5.00 with IN plates, Fri.-Sun., holidays
	\$2.00 per day for walk-ins and bicyclists

*Annual entrance permits are available.*

## Support the Park with Your Purchases



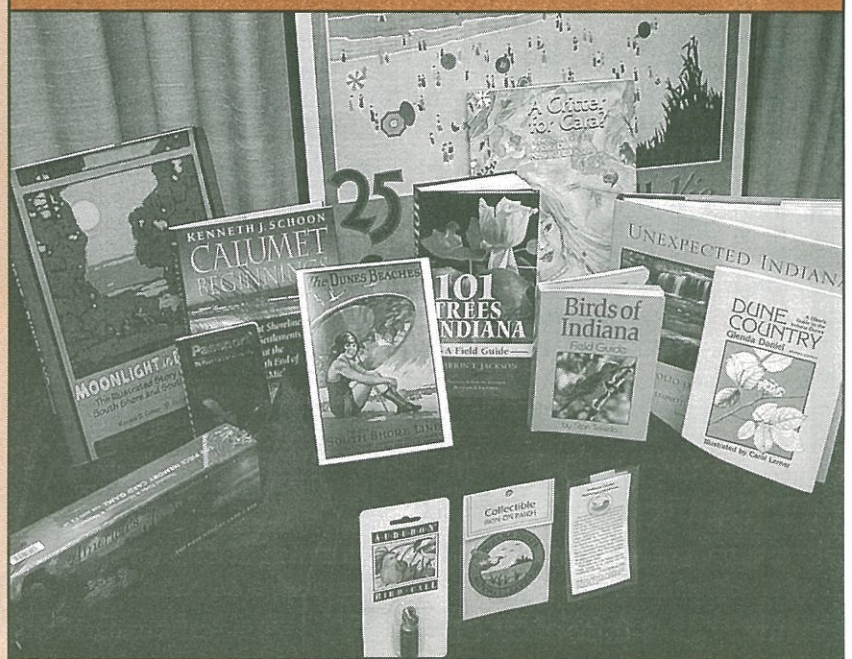
*Eastern National provides quality educational products and services to the visitors to America's national parks.*

Eastern National is committed to the National Park Service and other caretakers of public trust and is dedicated to helping visitors find the information, materials and experiences they need to fully understand and appreciate the legacy of the places they will visit today, tomorrow and for generations to come.

Eastern National, a not for profit organization, donates a portion of their proceeds to Indiana Dunes National Lakeshore to support interpretive and educational projects, including the printing of this publication, the *Singing Sands*. The bookstore is open everyday except Christmas, New Years, and Thanksgiving.

The new Dorothy Buell Memorial Visitor Center offers a wide array of books, games, postcards, souvenirs, and other fun and educational items related to the resources of the Indiana Dunes and Porter County is open year round except for Thanksgiving, Christmas, and New Years Day. You may also visit the online store at [www.easternnational.org](http://www.easternnational.org) or [www.eparks.com](http://www.eparks.com).

## EASTERN NATIONAL BEST SELLING ITEMS



**1. BAILLY/CHELLBERG**  
Explore an 1820s fur trading outpost and a 1900-era Swedish farmstead. Enjoy the Duneland Harvest Festival during the third full weekend of September and Maple Sugar Time on the first full weekend of March. Follow the trail that starts here and winds through a wide diversity of landscapes, including the Mnoke Prairie, the Little Calumet River, and a mature beech/maple woodland.

**2. WEST BEACH**  
There is much to do at West Beach, even when the weather is too cold for swimming. Grill a meal at the picnic shelter, walk a marked trail traversing the dunes and forest, learn how plant and animal communities are replacing one another through time, or watch migrating waterfowl at Long Lake in autumn and spring.

**3. MOUNT BALDY**  
Hike the trail to the top of the national lakeshore's largest moving dune. Mount Baldy, at 126 feet tall, provides stunning views of Lake Michigan and its shoreline.

**4. DUNEWOOD CAMPGROUND**  
Dunewood is just over one-mile south of Lake Michigan and features 78 wooded campsites. Enjoy camping with the convenience of modern restrooms and showers. Fees are charged, and registration is on a first-come first-served basis.

**5. LAKE VIEW**  
As the national lakeshore's only picnic area overlooking Lake Michigan, this site offers grills and covered picnic shelters. Beautiful sunset views make this one of the most popular park spots.

**6. PINHOOK BOG**  
A mat of sphagnum moss keeps everything from trees to insect-eating plants floating above an ancient, and now-hidden, lake. This extremely rare and fragile habitat can only be entered during a ranger-led tour.

**7. COWLES BOG TRAIL**  
The national lakeshore's most rugged hike takes you on a five-mile journey through wetlands and over both wooded and moving dunes to an isolated beach.

**8. LY-CO-KI-WIE TRAIL**  
Depending on the season, hike, ski, or ride the four-mile trail through wooded dunes and wetlands. Bring your own skis or horse.



**Water Safety**  
Lake Michigan waters can be hazardous. Rip currents occur frequently during periods of high wind and waves. During the winter, sheet ice forms along the lakeshore and is never safe to walk on. Check with local authorities about conditions and potential hazards.