

*Ile Royale*

NATIONAL PARK

*...Michigan*

UNITED STATES  
DEPARTMENT OF THE  
INTERIOR

Harold L. Ickes, *Secretary*



19

41

NATIONAL PARK SERVICE  
Newton B. Drury, *Director*

*C O N T E N T S*

Isle Royale Moose . . . . .	Cover	Fishing . . . . .	10
(Copyright, Frank M. Warren)		Seasons . . . . .	10
Geology . . . . .	4	Legal Sizes . . . . .	10
Flowers and Trees . . . . .	4	Daily and Possession Limits	10
Wildlife . . . . .	5	Boating . . . . .	10
History . . . . .	6	Camping . . . . .	13
Transportation . . . . .	6	Hiking . . . . .	13
Boat Schedules . . . . .	6	What to Wear and What to	
Charter and Special Trips	10	Bring . . . . .	13
Rail and Bus Service . . . . .	10	Accommodations and	
		Expenses . . . . .	14
		Rock Harbor Lodge . . . . .	14
		Windigo Inn . . . . .	14
		Belle Isle Camp . . . . .	15
		Supplies and Curios . . . . .	15
		Gasoline and Oil . . . . .	15
		Administration and	
		Protection . . . . .	15
		Post Office . . . . .	15
		Telegrams . . . . .	15

**ISLE  
ROYALE  
NATIONAL PARK**  
MICHIGAN

SEASON JUNE 15 TO SEPTEMBER 15



WHITE BIRCH

*Photo by Oastler*

**T**HE establishment of Isle Royale National Park in northwestern Lake Superior, Mich., was authorized by act of Congress, approved March 3, 1931.

In 1935 Federal emergency funds were made available for the acquisition of land within the area for Emergency Conservation Work purposes. These funds were subsequently augmented by an allotment by the State of Michigan to make possible the acquiring of 121,000 acres of privately owned lands. Civilian Conservation Corps camps were installed on Isle Royale for the protection and improvement of the area, pending final establishment of the park.

On April 3, 1940, Secretary Ickes accepted the deed from the State of Michigan to 133,225 acres of land which, together with the public domain set aside by President Roosevelt, comprise Isle Royale National Park, one of the few remaining wilderness areas of continental United States.

Isle Royale and its neighboring islands lie just within the international

boundary, 50 miles northwest of Keewenaw Point, Mich., 20 miles southeast of Thunder Cape on the Canadian mainland, and 19 miles east of Grand Portage, Minn. The main island, Isle Royale, is the largest in Lake Superior. About 45 miles long and 9 miles across at its widest point, it contains approximately 210 square miles.

The other islands range in size from mere rock protrusions to islands 2 or more miles in length. Mott Island, where the park headquarters is located, is part of the outer chain that forms the southeast boundary of Rock Harbor, a harbor 13 miles long.

With some 105 smaller islets and countless minor rocks surrounding it, Isle Royale might well be termed an archipelago. The northeastern end of the main island is often compared to the fingers of a hand; it consists of five chains of islands and peninsulas forming four fjordlike harbors, the longest of which is Rock Harbor. The islands on the southwestern end form a harbor (Grace Harbor) within a harbor (Washington Harbor).

## GEOLOGY

Isle Royale is almost void of sandy beaches and shows every indication of recent emergence—geologically speaking—from Lake Superior. The evidence consists in raised rocky beaches; sea caves; jagged remnants of rocks, the work of waves when the lake stood at a higher level; and cascades which fall into the lake. The rocks of the island, some of the oldest known, are a series of lava flows and sediments derived almost wholly from the lavas.

Following the formation of the lava beds, the area passed through a period of elevation, erosion, depression, and deposition, followed by a second period of elevation, tilting, and faulting which resulted in the long narrow ridges with intervening valleys. The breaking up of the softer rocks of the parallel ridges left gentle slopes on the southern side and abrupt, steep faces on the north. The main ridge, Greenstone Ridge, extends down the center of the island to form a divide and is broken by about four low gaps.

The great ice sheets of the glacial periods overrode the entire island. When the ice retreated, Isle Royale was submerged by a great lake which lay along the front of the receding ice. As the ice melted, lower outlets were opened and the waters receded. This possibly was accompanied by elevation of the land. The net result, however, left Isle Royale much as it is today.

The highest elevation on the island is Ishpeming Point, 705 feet above the level of the lake. The water is deep close to shore and most harbors are navigable. There are many lakes on

Isle Royale, the largest being Siskiwit with an area of 6 square miles. The lakes, the open glades among heavily wooded slopes, and the oft-broken shoreline all add to the beauty of the island.

## FLOWERS AND TREES

The geographical location and geological development of Isle Royale have combined to give it a wide and interesting variety of flora. Boreal species mingled with that of the lake forest, together with bog vegetation, create an outstanding example of the transition from north to south. Canada dogwood or bunchberry carpets wide areas; prince's pine or pipsissewa, the universally loved twin flowers, trilliums, and pyrola are found in the dense woods. The spectacular devil's club, so familiar in the Pacific Northwest, occurs in many places, although several hundred miles east of its natural range; and saprophytic plants, including the Indian-pipe or ghost-flower, are found in abundance. Deep blue iris and several kinds of orchids skirt the swamp lands. Perhaps the greatest joy of the flower lover comes with the discovery of large numbers of orchids, wild and undisturbed. Bluebells of Scotland or harebells nod from every crevice, and showy wood lilies lift their cups above luxuriant grasses. There are innumerable ferns, lichens, mosses, fungi, and a wide variety of rushes and sedges. Dense undergrowth makes travel difficult, except along the trails or in open meadows.

The large stands of light green deciduous trees, with their rounded tops, are found side by side with the darker



Photo by Bagley

## DOGWOOD

green spire-shaped conifers. Several species of birch occur, the most abundant being yellow birch and paper or white birch. Sugar, red, and mountain maple, black ash, boreal red oak, quaking aspen, mountain ash, alders, and willows are found throughout the islands. Balsam fir is the most common conifer, but white cedar, white and black spruce, larch, and white, jack, and Norway pine are all abundant. In regions where mining is prevalent, it has been the custom to set fires to expose the rock strata, and most of the island shows evidence of old burns. Thus there are few large forest trees but many stands of different ages and some old patriarchs which have withstood the burnings. Certain areas have stands which consist almost entirely of birch and poplar. Cedar, spruce, fir, alder, and birch dip their branches into

the quiet waters of many an inland channel.

## WILDLIFE

Separated as it is from the mainland, Isle Royale lacks many forms of wildlife common to both Canada and the United States. Bear, porcupine, deer, wolves, and several hibernating rodents have not made their appearance here or have disappeared because of unfavorable living conditions. Moose, coyote, lynx, mink, beaver, and snowshoe rabbits are common, particularly the moose, whose favorite haunts are Lake Ritchie, Lake Halloran, Rock Harbor Lodge, Grace Creek, McCargo Cove, and Lake Eva. They are also seen frequently along the trails in the back country. Beaver are found along the inland lakes and may be seen by those who patiently watch and wait. Birds are common during spring and fall migrations;

many varieties are seen throughout the nesting and summer season.

### HISTORY

The Indian, fur trader, miner, lumberman, and fisherman, as well as the summer cottager, have all contributed to the fascinating history of Isle Royale. A visit to the old copper pits of aborigines of 600 to 800 years ago, the ruins of the old mines of 1844 to 1896, the site of a post of the American Fur Trading Company, or one of the present-day fishing villages typical of Norway or Finland, is certain to stimulate keen interest in the history of the island.

The story of man's search for the precious native copper is the most intriguing chapter in the history of the island. It is a story of ardent hopes and shattered dreams, of dire hardship and failure, for mining did not prove successful although it was attempted in 1844-5, again in 1871-83, and once more in 1889-96. In 1874 a mass of the metal weighing 5,720 pounds was found on Isle Royale and exhibited in the Centennial Exposition of 1876. Larger pieces were found later.

### TRANSPORTATION

**BOAT SCHEDULES.**—The following boat schedules from mainland points to Isle Royale were established on January 15, to remain in force through the 1941 season:

S. S. ALABAMA, Chicago, Ill. *Passengers only.* Five-day cruises beginning June 28.

LV.: Chicago	Mon.	11 a.m.
AR.: Mackinac	Tues.	9 a.m.
LV.: Mackinac	Tues.	11:30 a.m.

AR.: Soo	Tues.	7:30 p.m.
LV.: Soo	Tues.	8 p.m.
AR.: Isle Royale (Rock Harbor)	Wed.	1:30 p.m.
LV.: Isle Royale (Rock Harbor)	Wed.	3:30 p.m.
Pass Soo	Thurs.	6:30 a.m.
AR.: Mackinac	Thurs.	3:30 p.m.
LV.: Mackinac	Thurs.	5 p.m.
AR.: Chicago	Fri.	3 p.m.

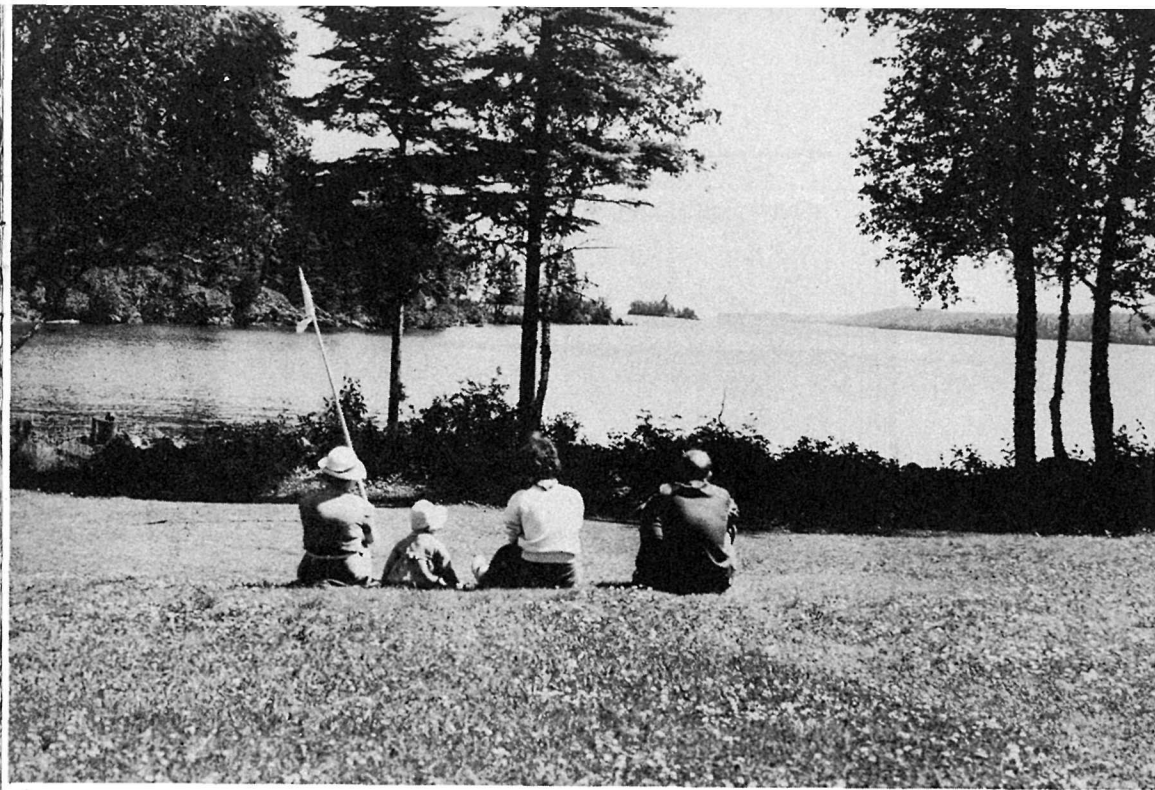
Rates vary according to space desired; minimum rate is \$49.50, including meals and berth for 5-day round trip.

S. S. NORTH AMERICA, Buffalo, N. Y. *Passengers only.* Week-end sailings starting July 5.

LV.: Buffalo	Sat.	8 p.m.
AR.: Cleveland	Sun.	8 a.m.
LV.: Cleveland	Sun.	9 a.m.
AR.: Detroit	Sun.	4:30 p.m.
LV.: Detroit	Sun.	5:30 p.m.
AR.: Mackinac	Mon.	2:30 p.m.
LV.: Mackinac	Mon.	4:30 p.m.
Pass Soo	Mon.	12 m.
AR.: Isle Royale (Rock Harbor)	Tues.	4:30 p.m.
LV.: Isle Royale (Rock Harbor)	Tues.	6:30 p.m.
AR.: Duluth	Wed.	7:30 a.m. (CST) 8:30 a.m. (EST)
LV.: Duluth	Wed.	2:30 p.m. (CST) 3:30 p.m. (EST)
AR.: Soo	Thurs.	6:30 p.m.
LV.: Soo	Thurs.	7 p.m.
AR.: Detroit	Fri.	7:30 p.m.
LV.: Detroit	Fri.	9 p.m.
AR.: Buffalo	Sat.	3 p.m.

For further information on S. S. ALABAMA or S. S. NORTH AMERICA, address Chicago, Duluth & Georgian Bay Transit Co., 2270 National Bank Building, Detroit, Mich.

S. S. WINYAH, Duluth, Minn.



SUMMER DAYS ARE CRISP AND COOL ON ISLE ROYALE

*Freight and passengers; no autos.* Service May 1 to November 1, leaving Duluth Tuesdays and Saturdays and returning Mondays and Thursdays.

LV.: Duluth	10 a.m.
LV.: Grand Marais	8:30 p.m.
AR.: Washington Harbor (Isle Royale)	4 a.m.
Belle Isle (Isle Royale)	7:30 a.m.
Rock Harbor (Isle Royale)	12 m.
LV.: Washington Harbor (Isle Royale)	4 p.m.
LV.: Grand Marais	9:50 p.m.
AR.: Duluth	8 a.m.

Rates, Duluth-Isle Royale, one way \$10, round trip \$20, meals and berth included. From point to point on Isle Royale:

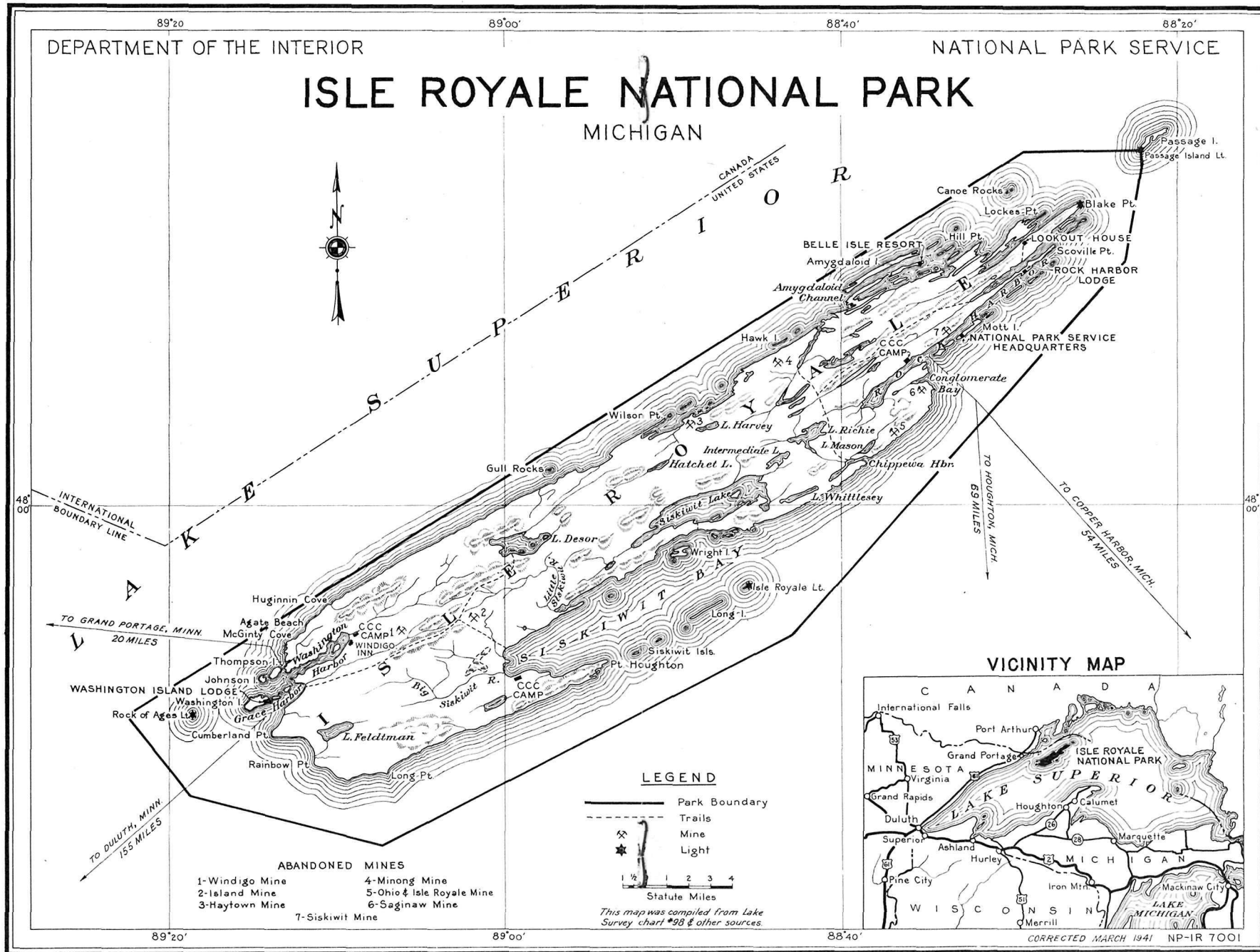
Washington Harbor to Belle Isle	..... \$3
Belle Isle to Rock Harbor	..... \$1

Rock Harbor to Washington Harbor \$3.

Special arrangements can be made to go aboard at Grand Marais, Minn. For further information address H. Christiansen & Sons Co., Lake Ave., Duluth, Minn.

ISLE ROYALE QUEEN (motor launch), Copper Harbor, Mich. *Passengers and camp luggage.*

(June 20 to July 4) lv. Copper Harbor 8 a.m. each Wednesday; arrive (Rock Harbor) Isle Royale 1 p.m. Return trip: following day—leave Isle Royale 8 a.m.; arrive Copper Harbor 1 p.m. July 4 to Labor Day same schedule, but three trips per week, leaving Copper Harbor Monday, Wednesday, and Friday. Arrangements can be made with boat captain to discharge camping parties at any camp site on Isle



MAP OF ISLE ROYALE

Royale and to pick them up again at a specified time.

Rates, round trip, Copper Harbor to Isle Royale, no meals, \$5 per person; one way, \$3.50 per person. For further information address Charles Kauppi, Box 45, Gay, Mich.

COLLEEN (motor launch), Grand Portage, Minn. *Passengers and camp luggage.*

(July 1 to September 10) Leave Grand Portage daily 9:30 a.m.; arrive (Washington Harbor) Isle Royale 11:30 a.m. Return same day—leave Isle Royale 3 p.m.; arrive Grand Portage 5:30 p.m.

Rates, round trip, \$3.50 per person; one way \$2. For further information address Superior Vacations, Inc., Grand Portage, Minn.

**CHARTER AND SPECIAL TRIPS.**—Requests for information on special cruises or charter service may be addressed to any of the above operators.

**RAIL AND BUS SERVICE.**—Daily rail service to Houghton, Mich., is provided via Chicago, Milwaukee, and St. Paul R. R. in connection with the Duluth South Shore and Atlantic Ry. The *Copper Country Limited* leaves Chicago daily at 7:25 p.m., CST, and arrives Houghton 8:05 a.m., CST. Between Chicago and Houghton rail connections are made from the east and west for passengers bound for Houghton.

Daily bus service to Houghton is maintained by the Northland Greyhound Bus line. Bus arrives Houghton 9:12 p.m.; leaves Houghton 8:50 a.m. connections are made with related lines providing service to all principal cities.

### FISHING

Fishing in and near the park is permitted in accordance with the laws of the State of Michigan. A Michigan license is required of all persons over 17 years of age. *Resident license:* \$1, no additional charge for wife. *Non-resident license:* \$2, wife 50c additional. *Non-resident 10-day license:* \$1, wife 50c additional. Licenses are on sale at the lodges or may be purchased at park headquarters or from the guides.

**SEASONS.**—Brook, brown, and rainbow trout, April 27 to September 2; northern pike, walleyed pike, muskellunge, no closed season; Mackinaw or lake trout closed during spawning season as designated by Michigan Conservation Commission (usually October).

**LEGAL SIZES.**—Brook, brown, and rainbow trout, 7 inches; northern and walleyed pike, 14 inches; muskellunge, 30 inches.

**DAILY AND POSSESSION LIMITS.**—15 trout, 5 Mackinaw or lake trout, or 25 pike. It is unlawful to buy or sell brown, brook, or rainbow trout, Mackinaw or lake trout, walleyed and northern pike and muskellunge. One day's legal catch may be transported or shipped outside of the State by licensed non-resident persons.

Fishing boats are available for rent at all the developed centers. Fishing trips may be arranged to suit the visitor. Fishing tackle is usually furnished by the guide or a limited supply may be purchased from the guides or at the Rock Harbor Lodge.

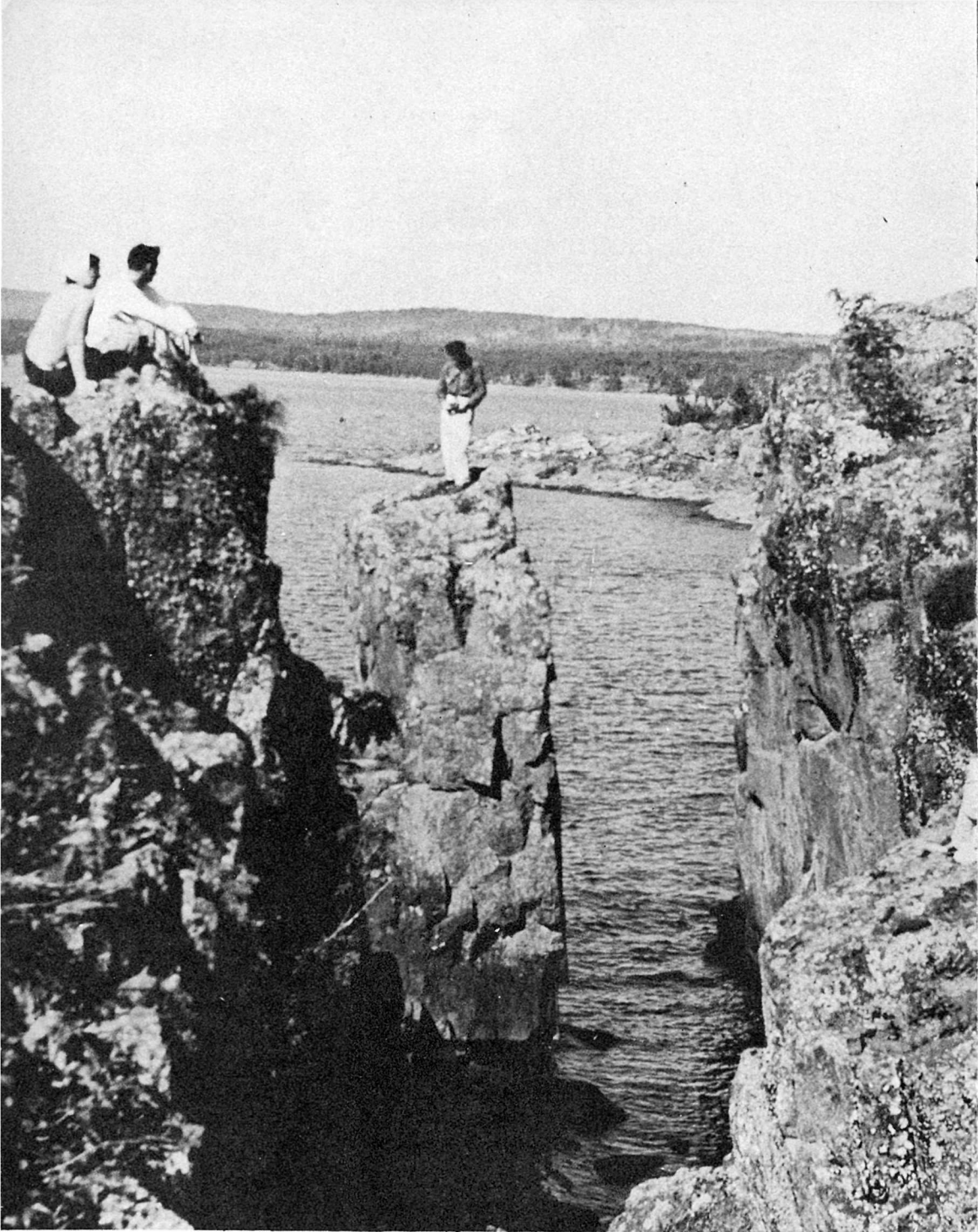
### BOATING

Rowboats for rowing or for use with outboard motor and motor launches are



*Photo by Oastler*

FINE SPECIMENS OF MACKINAW TROUT



ISLE ROYALE'S SHORES ARE ROCKY

available for rent for scheduled and special trips at Rock Harbor Lodge, Belle Isle Camp, and Windigo Inn. Boat trips may be arranged in connection with trail trips, picnic parties, or sightseeing cruises to outlying islands. Trips, combining hiking and boating, may be made from Rock Harbor Lodge to the head of Rock Harbor, Chippewa Harbor, and Lake Ritchie and return, or to Tobins Harbor and Mount Franklin and return, or Windigo Inn to Huggens Cove and return. An all-boat trip to Passage Island, the site of the United States lighthouse, is interesting.

#### **CAMPING**

The following camp sites have been designated by the National Park Service: Picket Bay, Washington Harbor, Siskiwit Bay, Siskiwit Lake, head of Rock Harbor, McCargo Cove, and Chippewa Harbor. While no facilities have been provided to date, individuals or parties may use these camps. Parties planning camping trips may obtain additional information by writing the superintendent.

#### **HIKING**

The trail system of Isle Royale is designed to make accessible the principal points of interest by the most direct routes. The trails are primitive, in keeping with the wilderness character of the park, but are suitable for all classes of hikes—the short hike of an hour or two or the all-day trip. Several combination trips, by boat one way and trail the other, are popular with visitors. Fire lookouts, inland lakes, historic mine ruins, campgrounds, picnic grounds, and interesting geological features may be reached by trail. Trails

are not blazed, but are marked by use or by stones where they cross open glades. When completed, the trails will be marked with metal markers which can be readily observed under all conditions.

From Rock Harbor Lodge, trails lead to Mount Franklin and Mount Ojibway, Lookout Louise, and Monument Rock; from Belle Isle Camp trails lead to Mount Ojibway and McCargo Cove; from Windigo Inn trails lead to Huggens Cove, Lake Desor, and Siskiwit Bay.

In planning hiking trips, park visitors are urged to obtain explicit directions from the lodge or park headquarters.

#### **WHAT TO WEAR AND WHAT TO BRING**

Since nights are cool in the park, and day temperatures rarely rise above 80 degrees, visitors should bring warm clothing when visiting Isle Royale. One seldom goes out on the lake without heavy sweaters or coats. Hiking clothes are best suited for boating and fishing as well as hiking. Living accommodations are informal, and the visitor always feels at home in hiking and sports clothes.

Opportunities for photography are excellent, and the camera is an important part of the visitor's equipment. Films may be purchased at the lodges. Dark glasses are advisable when on the water or along the lake shore. A limited amount of fishing tackle may be purchased locally; but it is advisable for visitors to bring their own. Tackle is furnished without extra cost only on guided trips.



*Photo by Marjorie Smith*

ROCK OF AGES LIGHT TOWER AND RADIO BEACON GUARD THE  
APPROACH FROM THE SOUTHWEST

### ACCOMMODATIONS AND EXPENSES

Throughout the season, from June 15 to September 15, accommodations are available at three principal points: Rock Harbor Lodge, Windigo Inn (Washington Harbor), and Belle Isle Camp.

**ROCK HARBOR LODGE** is located in Rock Harbor at the northeast end of the park, near many points of interest.

Good fishing banks, hiking trails, campgrounds, Passage Island (Government lighthouse), and park headquarters are all readily accessible. American plan rates per person range from \$2.75 per day for tent quarters to \$5.25 per day for private room in the main lodge. Meals only: breakfast, 50 cents; luncheon, 75 cents; dinner, \$1.

**WINDIGO INN** is located on the site

of the former Washington Club in Washington Harbor on the southwestern end of the island. American plan rates range from \$4.25 to \$5 per day per person, or \$28 to \$33.25 per week per person. Meals only: breakfast, 50 cents; luncheon, 75 cents; dinner, \$1.

**BELLE ISLE CAMP**, in Robinson Bay, on the west side of the north end of the island. Cottages suitable for one to three persons rent for \$5 to \$10 per person per week, or \$15 to \$30 per person per month. American plan accommodations are also available on request. Meals only: breakfast, 45 cents; luncheon, 60 cents; dinner, 75 cents.

For further information regarding rates, service, or reservations write Mrs. Matt Farmer, summer address, June 1 to September 30, Rock Harbor, Isle Royale, Mich.; winter address, October 1 to May 30, 2515 Chamberlin Ave., Madison, Wis. During the park season managers of the hotels may be addressed direct.

This circular is issued once a year and *rates mentioned herein may have changed slightly since issuance, but the latest rates approved by the Secretary of the Interior are on file with the Superintendent and park operators.*

### SUPPLIES AND CURIOS

A small supply of staple food and camp supplies, films, picture postcards, candies, tobacco, and curios is available at the lodges.

### GASOLINE AND OIL

Gasoline and oil may be purchased in small quantities at the lodges or from the guides.

### ADMINISTRATION AND PROTECTION

Mainland headquarters for Isle Royale National Park are located in Houghton, Mich.; summer headquarters are maintained from May to November on Mott Island, in Rock Harbor. Here are located offices, warehouses, radio station, and employees' quarters. The superintendent is in direct charge of the park. All comments regarding service, requests for information, or other communications should be addressed to the Superintendent, Isle Royale National Park, Houghton, Mich.

Exclusive jurisdiction over the park has been ceded to the United States by the State of Michigan. Offenders charged with violations of the rules and regulations will be brought before the United States Commissioner in Hancock, Mich.

### POST OFFICE

Mail service is provided to the park twice weekly, via S. S. Winyah, Duluth, Minn. A post office is maintained at Rock Harbor Lodge. Mail may be received at or sent from Windigo Inn and Belle Isle on regular mail days. Mail for any point on Isle Royale should be addressed to the point desired and marked Isle Royale National Park, Mich., via Duluth, Minn.

### TELEGRAMS

Through arrangement with the Western Union Telegraph Co., messages are sent and received to and from all points in the park via the National Park Service radio system. A joint rate covers both the radio and telegram cost.



# RULES AND REGULATIONS

[Briefed]

THE PARK REGULATIONS are designed not only to protect the natural beauties of the park but to aid visitors in the enjoyment of the area. You are requested to assist the park administration by respecting these rules. The following synopsis is for your guidance; complete rules and regulations may be seen at the superintendent's office, Mott Island, or in Houghton. Rangers are here to help and advise you as well as to enforce the regulations. You are invited to visit park headquarters for information or assistance at any time.

**FIRES.**—Build fires only at designated places. Always extinguish completely before leaving camp. Do not guess your fire is out—*know it*. Do not throw burning tobacco or matches along the trails.

**KEEP PARK CLEAN.**—Keep your camp clean. Whenever possible burn garbage in your campfire; place cans and residue in containers where provided. If none are available, bury refuse or place in pit. Do not throw lunch papers, wrappers, or other trash along the trails or in the water; carry material until it can be properly disposed of.

**TREES, FLOWERS, ANIMALS, NATURAL FEATURES.**—Destruction, injury, or disturbance in any way of trees, flowers, birds, or animals is prohibited; however,

dead and fallen trees may be used for firewood, unless fuel is available from other sources. Removal of artifacts, geological specimens, plants, trees, or flowers is prohibited.

**DOGS AND CATS.**—Such animals are prohibited on Government land in the park unless on leash, crated, or otherwise under physical restrictive control at all times; however, the superintendent may designate areas to which dogs and cats may not be admitted.

**LOST AND FOUND.**—Lost and found articles should be reported to headquarters at Mott Island or Houghton or to any ranger station. All persons should leave their name and address so that articles may be forwarded or claimed. Articles not claimed within 60 days may be returned to the finders.

**REGISTRATION.**—To make it possible to reach you in case of an emergency and to maintain a record of park use, all parties traveling in their own boats or camping are requested, *upon their arrival*, to report at park headquarters on Mott Island, or, if more convenient, at the office of the National Park Service radio stations or CCC camps. Registration cards are available at these points.

**FIREARMS.**—Firearms are not allowed in the park.