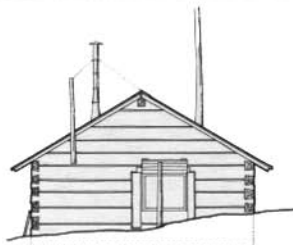


FLOOR PLAN
SCALE: 3/8" = 1'-0"

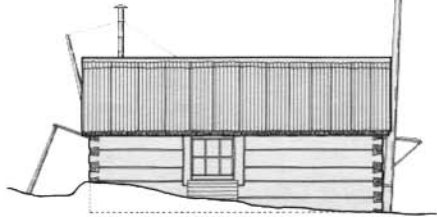


MATERIALS NOTES

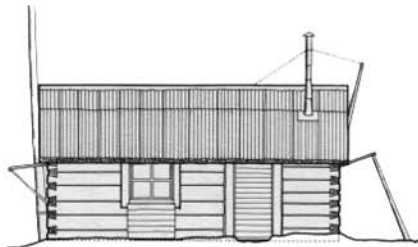
FLOOR: PEELED AND SPLIT LOGS PLACED FLAT FACE UP SUPPORTED BY HEAVY LEDGER LOGS ALONG THE WALLS AND AT THE MIDDLE. SILL LOG AT CENTER OF CABIN HEAVY. ALL FOUR SIDES - SET FLUSH WITH FLOOR TIMBERS.
 FLOOR ORIGINALLY COVERED WITH WHITE LINENS.
 WALLS: 7'-1/2" - 8" x 12" LOGS (HEAVY BOTH SIDES). CHIMNEY WITH MOSS AND SLUSH RAKE. ALL CORNERS DOUBLE DOVE-TAILED DOOR AND WINDOW JAMBS MADE OF VERTICAL LOGS (7" RING) GROUNDED TO SUPPORT WALL LOGS.
 WALLS ORIGINALLY "PAINTED" WITH NAUTICAL MAPS OF THE NORTHWEST FROM THE 1800'S. ALSO COVERED WITH CARDBOARD.
 ROOF: 4" x 8" BARK ROOFING TIMBERS 3'-6" IN CHAIN BOTH SIDES. COVERED WITH 8" x 8" x 2" SHEETS OF SALVAGED T&M PLYWOOD BROWN (!) TO RESIST RUST.



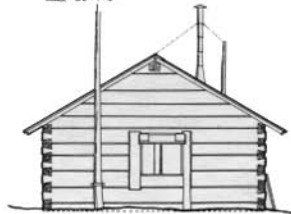
NORTH ELEVATION
SCALE: 3/8" = 1'-0"



WEST ELEVATION
SCALE: 3/8" = 1'-0"



EAST ELEVATION
SCALE: 3/8" = 1'-0"



SOUTH ELEVATION
SCALE: 3/8" = 1'-0"