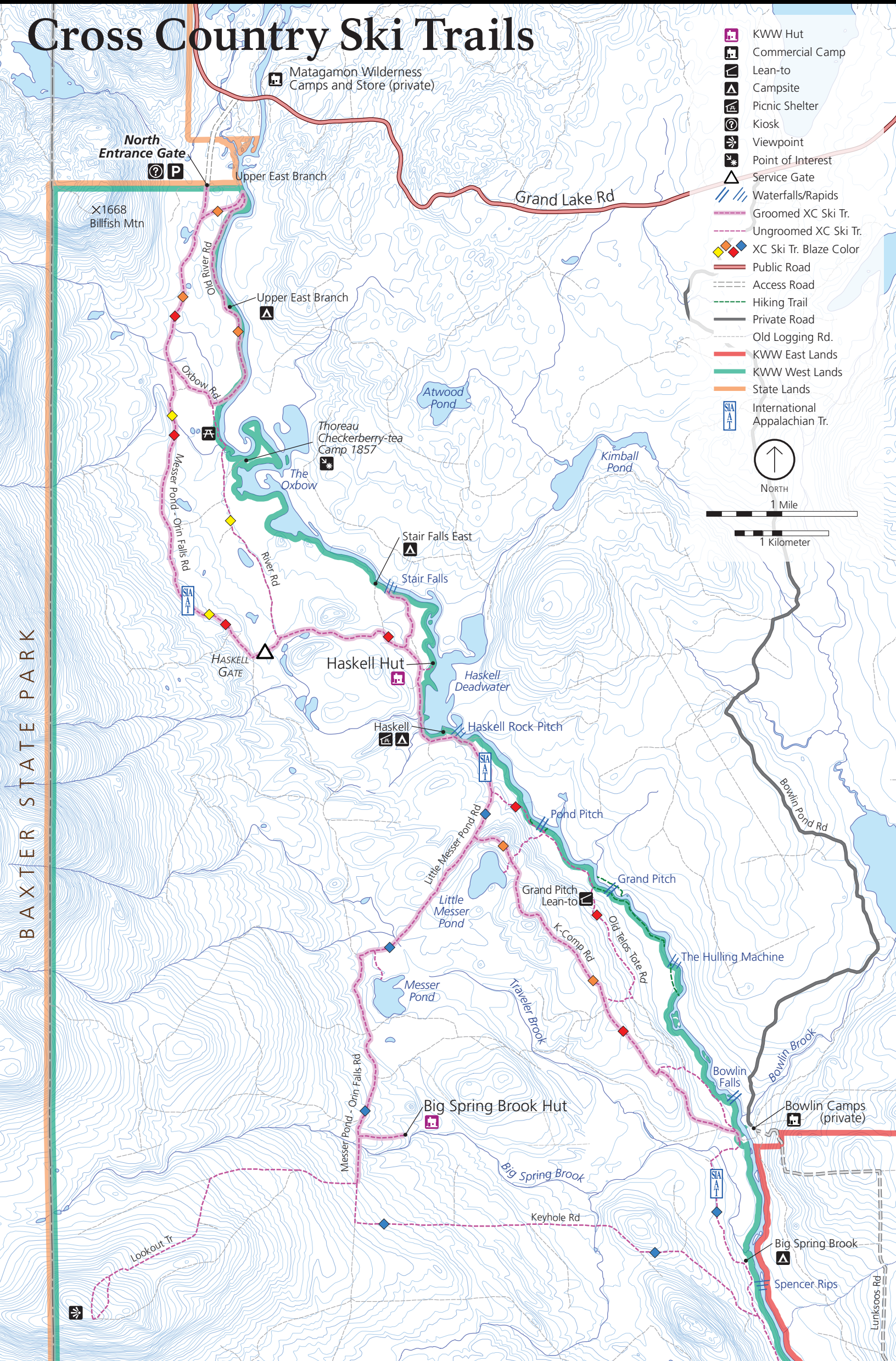


# Katahdin Woods and Waters National Monument

National Park Service  
U.S. Department of the Interior



## Cross Country Ski Trails



- KWW Hut
- Commercial Camp
- Lean-to
- Campsite
- Picnic Shelter
- Kiosk
- Viewpoint
- Point of Interest
- Service Gate
- Waterfalls/Rapids
- Groomed XC Ski Tr.
- Ungroomed XC Ski Tr.
- XC Ski Tr. Blaze Color
- Public Road
- Access Road
- Hiking Trail
- Private Road
- Old Logging Rd.
- KWW East Lands
- KWW West Lands
- State Lands
- International Appalachian Tr.

NORTH  
 1 Mile  
  
 1 Kilometer

BAXTER STATE PARK

North Entrance Gate

X1668  
Billfish Mtn

Matagon Wilderness  
Camps and Store (private)

Upper East Branch

Grand Lake Rd

Old River Rd

Upper East Branch

Atwood Pond

Kimball Pond

Thoreau  
Checkerberry-tea  
Camp 1857

The Oxbow

Oxbow Rd

River Rd

Stair Falls East

Stair Falls

HASKELL  
GATE

Haskell Hut

Haskell  
Deadwater

Haskell  
Rock Pitch

Pond Pitch

Bowlin Pond Rd

Little Messer Pond Rd

Grand Pitch

Grand Pitch  
Lean-to

K-Comp Rd

Old Telo-Tote Rd

The Hulling Machine

Little Messer Pond

Messer Pond

Travler Brook

Bowlin Falls

Bowlin Camps  
(private)

Big Spring Brook Hut

Big Spring Brook

Lookout Tr

Keyhole Rd

Big Spring Brook

Spencer Rips

Lunksoos Rd