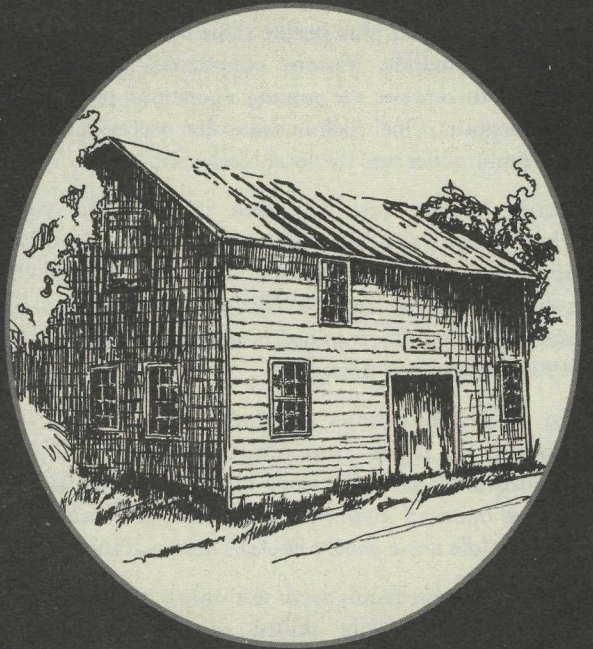


Keweenaw County Historical Society

Eagle Harbor, Michigan



Bammert Blacksmith Shop Phoenix, Michigan

The Blacksmith Shop Museum is
open mid-May to late October.
From 8:00 a.m. to 8:00 p.m.

Keweenaw Heritage Site

Partner of Keweenaw National Historical Park



*We invite you to join the
Keweenaw County
Historical Society*

Yes, I am interested in assisting the work of the Society

- Please sign me up as a member. My first year dues are enclosed.
- Historian\$20 per year
- Copper Miner\$35 per year
- Lightkeeper.....\$75 or more per year
- Life.....\$500 or more
- Please mail me additional information about Society membership.
- I'm not interested in membership, but want to help. My \$_____ donation is enclosed.

Name _____

Address _____

City/State/Zip _____

Please detach at perforation
and mail to:

KEWEENAW COUNTY HISTORICAL SOCIETY
670 LIGHTHOUSE ROAD
EAGLE HARBOR, MICHIGAN 49950

www.keweenawhistory.org

Thank You!



AMOS L. BAMMERT BLACKSMITH SHOP

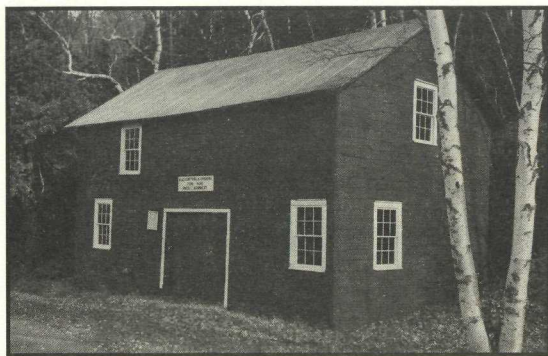
In the early 1840's a state geologist Douglas Houghton, explored the Keweenaw searching for the rich copper deposits. These discoveries led to the development of mining interests. It was said, that people came to Keweenaw region by the thousands. Various commercial developments prospered to support the mining operations of these rich copper deposits. One such business that was typical to find in all communities was the local blacksmith.

Amos L. Bammert was born in 1863, he started blacksmithing in the Keweenaw in the 1880s and worked a shop located near the Cliff Mine. Between 1900 & 1906 the shop was moved from the Cliff Mine area to its current location. His son Albert joined him in the blacksmith trade in 1909 at the age of thirteen.

In 1927, Keweenaw County wanted their own blacksmith so, Amos's son Albert, joined them. Amos continued black smithing alone and semi-retired in 1934. The shop operated intermittently until 1940 when the last horse, a saddle horse owned by Art Dion, was shod there.

The Bammert family were not only craftsmen of iron, they were also highly skilled as woodworkers. The blacksmith shop built sleighs, wagons and buggies. The sleigh and cutter on display were the products of their trade; created of metal and wood.

Thanks to Albert's sons, Laurence, Robert and Albert L. Bammert; the building and contents were donated to the Keweenaw County Historical Society on October 22, 1998. The KCCHS consummated the land purchase and today offer it as one of the many fine displays preserving the history of the Keweenaw.



Help Preserve Keweenaw's Proud Heritage

Founded in 1980, the Keweenaw County Historical Society depends on the generous contributions of members and friends to fund its continuing preservation, restoration and exhibition work.

The members of the Society have profound respect for those who went before, those who created the history we study and preserve. And we have a profound responsibility to those who will come after, to ensure that the history is still there. We are the connecting link, and it is important that we do our job well. Every membership and every gift is vital - we could not continue the Society's important and exciting work without such support.

Please join us! Members of the Society receive our award-winning quarterly newsletter, the Superior Signal, and other benefits.

To join, or ask for additional information about membership, or assist our work with a donation, please use the form on the reverse side. Detach along the perforation and mail it to the Society today. Your involvement will be very much appreciated.



An early picture of the Bammert Blacksmith Shop at Phoenix. At right is Amos L. Bammert with his son Albert holding a horse at the left. Amos' three daughters Clare, Elsie and Florence are in the doorway. Courtesy of Grandsons Laurence, Robert and Leslie Bammert.