

Keweenaw House

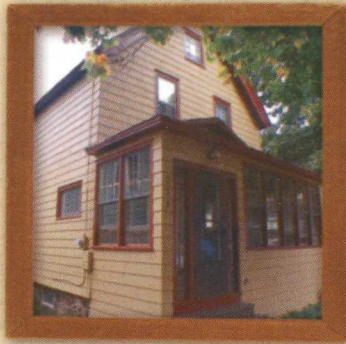
- 2,500 sq.ft. 2 story house
- Maximum Occupancy – 6
- 3 Large bedrooms
- 1 King & 2 queen beds
- 2 ½ baths
- 6' Whirlpool tub
- Dining room
- Full kitchen
- Washer & dryer
- Gas grill
- Sleeping porch with futon



- Rates from \$149/nt & \$595/wk

Miner's Cottage

- 1,700 sq.ft. 2 story house
- Maximum Occupancy – 8
- 4 Bedrooms/1 king, 1 queen, 1 double, 1 bunk
- 2 ½ baths
- 6' Whirlpool tub
- Full kitchen
- Washer & dryer
- Backyard & gas grill



- Rates from \$129/nt & \$495/wk

Yellow House

- 2300 sq.ft. 3 story house
- Max Occupancy - 6
- 3 bedrooms & 2.5 bath
- 1 king & 2 queen beds
- 6' whirlpool tub
- Large porch & balcony
- Full kitchen
- Washer & Dryer
- Back patio & Gas grill



- Rates from \$149/nt & \$595/wk

Smoking and pets are not allowed in any of our homes. Not available November–April. Contact us for monthly rate. More photos can be seen on our website: www.Laurium.info.

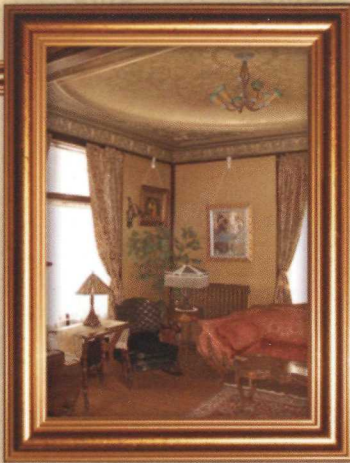
In the Keweenaw...
Your Mansion Awaits.

Laurium Manor Inn



*Featured in Midwest Living,
Chicago Magazine, Forbe's Top 10 B&B's
and Traverse Magazine*

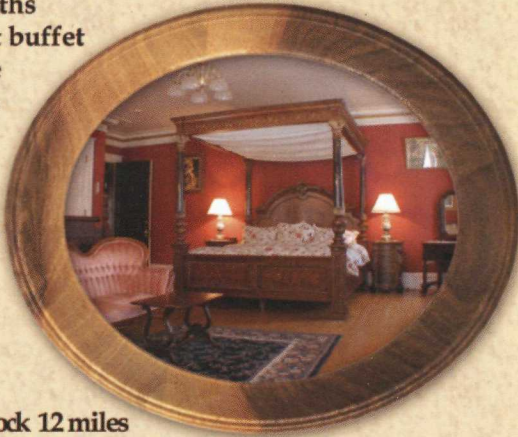
www.Laurium.info
906-337-2549



Staying at the Manor

The best of a B & B and hotel combined. A quiet historic village, tree lined streets, friendly faces, secluded private rooms, aroma of fresh bakery and the feeling of grandeur. Don't settle for ordinary when you can experience extraordinary.

- 13,000 sq. ft., 45 room mansion
- 11 guest rooms with king or queen beds
- All private baths
- Full breakfast buffet
- In-room cable TV, telephone, Wi-Fi and AC
- Suites with whirlpools and fireplaces
- Major credit cards accepted
- Smoke free
- No pets
- Houghton/Hancock 12 miles
- Copper Harbor 35 miles
- Rates from \$119



The Village of Laurium

A National Historic District in a quaint residential community is conveniently located next to Calumet at the center of the beautiful Keweenaw Peninsula. The Village depicts the lifestyles of the Copper mining period, from miner row houses, blocks of ornately decorated mining captain houses, to the opulent Laurium Manor and Victorian Hall.

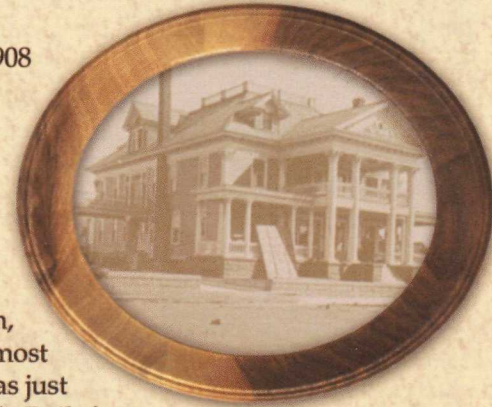
Victorian Hall

Our second mansion is just across the street. This 7000 sq. ft., 34 room High Victorian Home was built in 1906. All 8 guestrooms have private baths and King or Queen beds.



History

The year was 1908 and all over the Keweenaw Peninsula mansions were being built by wealthy copper mine owners. Here in Laurium, the largest and most opulent of all was just being completed. Built for Thomas H. Hoatson, owner of the Calumet & Arizona Mining Co., no expense was spared in building the 13,000 sq. ft., 45 room mansion. The exquisite features



Visit Our Website
www.Laurium.info
 for room photos,
 prices, availability,
 reservations and
SPECIALS.

include a silver leaf ceiling, elephant hide wall coverings stained glass windows and tiled fireplaces. These and many more original features still fill the mansion.

