

# MANSION TOUR



## Laurium Manor

National Register of Historic Places

Keweenaw National Historical Park  
Heritage Site



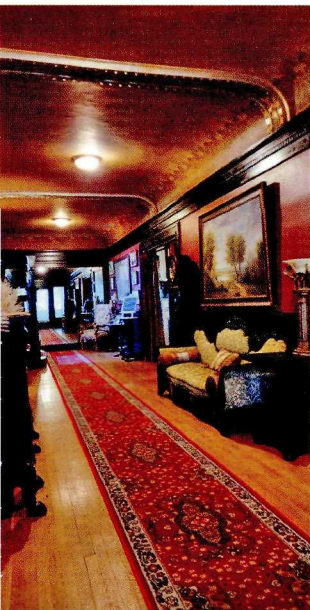
# Copper's Wealth Touches A Family

Copper mining on the Keweenaw Peninsula was in its heyday in 1908. With the copper came great wealth and large mansions sprang up as testament to the mine owners' success. Thomas H. Hoatson Jr., owner of the Calumet & Arizona Mining Co. completed the largest and most opulent of these mansions in the Village of Laurium.

Hoatson spared no expense in building this 45 room home for himself, his wife Cornelia and their 6 children.



## A Lavish Mansion



Tour this amazing Mansion and experience this lavish mansion's unique features:

- 13,000 square feet on four floors
- Embossed and gilded elephant hide wall covering
- Gilded Tiffany fireplaces
- Silver leaf ceilings
- Wall sized oak, marble and tile Ice box in the kitchen
- Hand carved grand triple oak staircase
- 1300 square foot ballroom
- Hand painted murals and friezes

Laurium Manor gives you a glimpse into early 1900s affluent life enjoyed by wealthy Copper Country families.

Laurium Manor is also an historic mansion hotel. Overnight guests may have rooms occupied that are not open for viewing. For this reason, tours before noon or after 3 p.m. cannot be allowed.



## Self-Guided Audio Tours Daily, Noon to 3 pm

Visit website for more information



[www.Laurium.info](http://www.Laurium.info) 906.337.2549  
320 Tamarack St., Laurium, MI 49913