



The Keweenaw Guide



Quincy Dryhouse Ruins along U.S. Highway 41

A Centennial Of Change

THE KEWEENAW LOOKED VERY DIFFERENT IN 1916. Although it no longer led the American copper industry, its mines were the most productive they had ever been. Three mines—Calumet & Hecla, Quincy, and Copper Range—dominated operations. Stamps were grinding copper rock into smaller pieces at mills along the lakeshores. Smelters cast molten copper into ingots, cakes, and other shapes for shipping to distant markets. Forests had been cleared to make room for mines. Waterways were dotted with docks, ships, and lighthouses. A vast network of trains transported coal, copper ore, and passengers between mine sites, mills, and cosmopolitan urban centers. Countless smokestacks exhaled sooty clouds into the sky.

Meanwhile, a movement to protect large natural areas in the western United States was underway.

Spectacular landscapes at places like Yellowstone, Yosemite, and the Grand Canyon had been protected as national parks for the benefit of all Americans, not just for those who would profit from extracting their lumber, ore, and oil. The visionary leaders behind the national park movement ensured that these special places would be saved for hikers, campers, and those seeking solitude and inspiration in nature. In 1916, the National Park Service was established to manage an increasing number of national parks. Its mission was to conserve their natural and historic resources, and leave them unimpaired for future generations.

How could places as different as Yellowstone and Keweenaw be associated with the same preservation organization? The visionaries who set aside significant natural places also recognized the need to protect significant historic sites. Soon, places like Mesa Verde and Chaco Canyon were being added to the national park system. Keweenaw National Historical Park follows that tradition: It preserves and interprets an industry associated with the development of American technology, its economy, and its diverse cultures. Each park service site is unique, and collectively, they tell our national story.

This year, the National Park Service is celebrating its 100th anniversary by reflecting on the agency's past and by looking ahead: *What will the National Park Service look like in another 100 years? Closer to home, how will the Quincy and Calumet Units of Keweenaw National Historical Park look in 2116?* These are key questions to guide us as we seek to better serve our visitors and communities into the future.

Looking back, we thank those visionaries who had the courage and determination to make this great idea happen. As we look ahead, we invite you to be one of today's visionaries that will help shape our parks and communities for the future. Thank you for visiting Keweenaw National Historical Park and being part of the 100th anniversary celebration!

By Kathleen Harter, Acting Superintendent

Stay Connected



Want to learn more? The National Park Service website, www.nps.gov, connects you to amazing vistas, educational opportunities, and current news and events happening in parks across the nation. To find us, go to www.nps.gov/kewe.

Social media is another great way to stay in touch. This venue not only allows you to get instant updates about the park and community activities, but also gives you the opportunity to share your thoughts and ideas with us. Several times a week we post content that looks at our captivating history, remarkable resources, and where you might find us across the Keweenaw. When you have time, look for us at www.facebook.com/keweenawnhp, twitter.com/KeweenawNPS, and [instagram.com/keweenawnps](https://www.instagram.com/keweenawnps).

Become a Junior Ranger



Are you 8 years or older? You can become a Junior Ranger by picking up a free book and having fun completing the pages. Once you are done, bring your completed book back to the visitor center or park headquarters where a ranger will review your book and award you a badge and sticker.



Here's where to find the Junior Ranger book:

- Calumet Visitor Center
- Park Headquarters (25970 Red Jacket Road in Calumet)
- Keweenaw NHP Information Desk at the Quincy Mine Gift Shop
- Online at the park webpage



Keweenaw National Historical Park
 25970 Red Jacket Road
 Calumet, MI 49913
 Park Headquarters: 906-337-3168
 Calumet Visitor Center: 906-483-3176
 Fax: 906-337-3169
 Website: www.nps.gov/kewe
 Social Media:
www.facebook.com/keweenawNHP
twitter.com/KeweenawNPS
instagram.com/keweenawnps

2016 Keweenaw Guide
 Design and layout: Jenni Burr
 Editors: Kathleen Harter, Katie Keller,
 Valerie Newman
 Photography: Gary Ennis, Nathan Miller,
 NPS stock photos

Printing of The Keweenaw
 Guide courtesy of the Isle
 Royale and Keweenaw
 Parks Association.



Printed by Quad/Graphics
 on recycled paper using
 agri-based inks. Please recycle.



The National Park Service cares for the
 special places saved by the American
 people so that all may experience our
 heritage.

Visitor Services and Facilities



FOOD AND RESTAURANTS

A variety of restaurants are located throughout the Keweenaw Peninsula. Grocery stores are also available in all towns.



CAMPING

Camping options are available across the Keweenaw Peninsula. Community-operated and private campgrounds are also available. For more information, contact the Keweenaw Convention and Visitors Bureau at 1-800-338-7982 or visit www.keweenaw.info.



LODGING

A full range of lodging can be found across the Keweenaw Peninsula. Contact the Keweenaw Convention and Visitors Bureau for more information 1-800-338-7982 or www.keweenaw.info.

SPECIAL EVENTS

Many local communities and Keweenaw Heritage Sites offer special events including parades, musical performances, festivals, races, and more. Check the *schedule of events* at www.keweenawheritagesites.org.



Accessibility



The Calumet Visitor Center and the information desk at Quincy Mine are accessible.

Some National Park Service facilities located in historic structures, as well as several Keweenaw Heritage Sites, are not accessible at this time. Information on which sites have accessible facilities is located in the centerfold of the newspaper. Sites indicated as accessible may require assistance in certain areas. Other parts of the site may not be accessible. Contact sites directly for further information on accessibility prior to visiting.

KEWEENAW NHP INFORMATION DESK



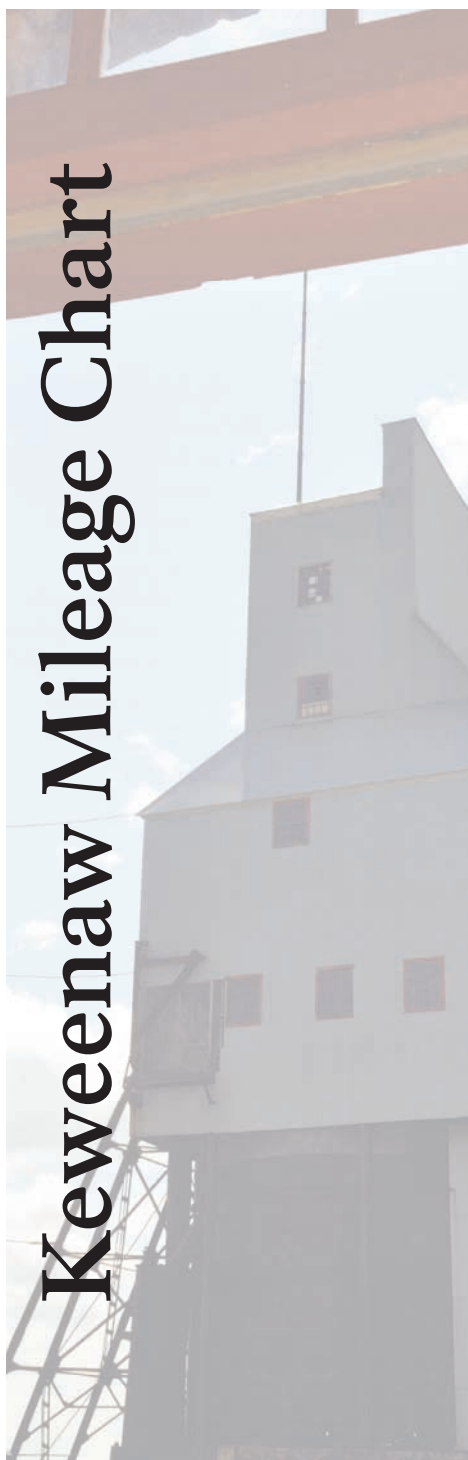
Located at the entrance to the Quincy Mine Gift Shop, an information desk contains travel and trip planning information about the park and Keweenaw Heritage Sites. Staffing varies and depends on the season.



CALUMET VISITOR CENTER



Let park rangers provide area information to help you plan your visit. Explore the historic structure and two floors of interactive and accessible exhibits and audio-visual programs, including *Risk and Resilience*, a free 14-minute film about the area's history, people, and the park. Assisted listening devices available, as well as closed captioning. Bookstore purchases (books, games, posters, postcards, shirts, hats, patches, and more) support the park. Located at 98 Fifth Street in Calumet. Please call 906-483-3176 or visit the park website at www.nps.gov/kewe for the latest information on days and hours of operation.



	Hanka Homestead	Calumet/Laurium	Central	Chassell	Copper Harbor	Delaware	Eagle Harbor	Eagle River	Greenland	Hancock	Houghton	Lake Linden	Ontonagon	Phoenix	Quincy Hill	South Range	Victoria	Porcupine MWSP
Hanka Homestead	-	35	53	15	70	58	59	51	60	24	22	36	73	49	26	55	72	89
Calumet/Laurium	35	-	18	20	35	23	24	16	51	11	13	4	51	14	11	22	63	82
Central Mine	53	18	-	38	17	5	14	6	69	29	31	22	55	4	29	40	81	100
Chassell Heritage	15	20	38	-	55	43	44	36	45	9	7	21	58	34	11	12	57	74
Copper Harbor	70	35	17	55	-	12	14	22	86	41	43	39	72	21	46	57	98	117
Delaware	58	23	5	43	12	-	19	11	74	36	38	27	60	9	34	45	86	105
Eagle Harbor	59	24	14	44	14	19	-	8	75	35	37	28	88	10	35	46	87	106
Eagle River	51	16	6	36	22	11	8	-	67	27	29	20	80	2	27	38	79	98
Adventure Mine	60	51	69	45	86	74	75	67	-	40	38	52	13	65	42	33	12	29
Hancock	24	11	29	9	46	36	35	27	40	-	2	12	53	25	2	7	52	69
Houghton	22	13	31	7	43	38	37	29	38	2	-	14	51	27	4	5	50	67
Lake Linden	36	4	22	21	39	27	28	20	52	12	14	-	65	37	14	19	64	81
Ontonagon	73	51	55	58	72	60	88	80	13	53	51	65	-	78	55	46	16	16
Phoenix	49	14	5	34	21	9	10	2	65	25	27	37	78	-	25	36	77	96
Quincy Hill	26	11	29	11	46	34	35	27	42	2	4	14	55	25	-	11	54	71
Copper Range	55	22	40	12	57	45	46	38	33	7	5	19	46	36	11	-	45	62
Old Victoria	72	63	81	57	98	86	87	79	12	52	50	64	16	77	54	45	-	32
Porcupine MWSP	89	82	97	74	115	105	106	98	29	69	67	81	16	96	71	62	32	-

Doing Research

ARCHIVAL COLLECTIONS AT KEWEENAW NATIONAL Historical Park include Calumet and Hecla Mining Company, Quincy Mining Company and other business records; records from fraternal organizations and churches; personal and family papers; and photographs. For a guide to our collections, researcher forms, and additional information, please visit the park website at <http://www.nps.gov/kewe>. Click on History and Culture, and then on Collections. If you are interested in doing research using the park's collections, please contact the park archivist to make an appointment.

The Keweenaw National Historical Park Archives are located in the Keweenaw History Center, in the former Calumet and Hecla Mining Company Public Library building at the southeast corner of Red Jacket Road and Mine Street in Calumet. Plans for the rehabilitation of the historic C&H Public Library building include changes to allow for universal accessibility. In the meantime, please notify park staff if you are not able to navigate stairs, and they will arrange research space for you in another building.

The best place to start family history research is Michigan Technological University Archives and Copper Country History Collections. Michigan Tech holds the majority of the records from the Calumet and Hecla Mining Company and the Quincy Mining Company, including employment records. They also have the most complete run of Houghton County directories available in one location, in addition to many other collections. The Michigan Tech Archives are open Monday through Friday from 10:00 AM to 5:00 PM, and are located in the lower level of the J. R. Van Pelt and Opie Library on the Michigan Tech campus in Houghton. Walk-ins are welcome. Please visit the Michigan Tech Archives website at <http://www.lib.mtu/mtuarchives/> for more information.

By Jeremiah Mason, Park Archivist

Welcome to one of America's special places. The idea for Keweenaw National Historical Park grew out of a desire by local residents to recognize and preserve the area's rich history and connections to our national heritage. This history is found throughout the Keweenaw Peninsula within mining locations, villages and communities, industrial landscapes, and the stories of the people.



This partnership park has something to offer everyone. Historic districts, state parks, museums, homes, historical societies, mines, and heritage centers all provide unique visitor opportunities. The National Park Service presence is growing, but it is dependent upon a mutual collaboration of historic preservation and interpretation efforts. This work is being done by many people, communities, commissions, educational institutions, and business owners.

Based on a long history of change and resilience, the park is connecting with new visitors, community members, and youth. Each year, park staff, volunteers, and advocates are developing new programs, preserving journals and photographs, maintaining cultural landscapes, and preserving historic buildings. As you explore the park and its many partners, we hope you ask questions and share your observations. We are glad you are here, and hope you return with a new appreciation of the region's history.

Kathleen Harter, Acting Superintendent

Every Kid in Keweenaw NHP

THE EVERY KID IN A PARK INITIATIVE, WHICH LAUNCHED on September 1, 2015, allows every fourth grader's family to visit a national park, federal land, or federal waters site for free by obtaining a special 4th grade federal lands pass. The free pass is an invitation to celebrate 100 years of the National Park Service at more than 400 public lands sites across the country.

Park rangers from Keweenaw National Historical Park have been traveling to fourth grade classrooms to deliver federal lands passes in person—and to get kids excited about the many National Park Service sites in their own backyard! Fourth graders, parents, and educators may also print the federal lands pass at www.everykidinapark.gov. To enter a federal site for free with this pass, the fourth grader simply presents their federal lands pass at the entrance gate. Fourth graders are able to use these passes an unlimited number of times at any federal land site in the United States until they expire on August 31, 2016. While the paper passes printed from the Every Kid in a Park website are official, fourth graders may trade them in for a sturdier version of the pass. These sturdier passes are not available at Keweenaw National Historical Park, but are available at Isle Royale National Park headquarters in Houghton, Michigan.

New for 2016, fourth graders are invited to a program hosted by Keweenaw National Historical Park called Copper TRACES. The Copper TRACES program is scheduled to reach as many as 600 fourth graders in Keweenaw, Houghton, Baraga, and Ontonagon counties. To accommodate this many students, day-long events will be held on May 23, 24, and 25, 2016. Copper TRACES features interactive stations that educate students on the different themes of Keweenaw National Historical Park: technology, research, art and music, environment, and service. Each station complies with Michigan Grade Level Content expectations and appeals to multiple learning styles. Keweenaw Heritage Sites and community partners will lead stations that represent their sites.



To ensure that every fourth grade student is able to participate, the Copper TRACES program is free of charge to schools, educators, and students. Thanks to funding provided by the National Park Foundation, transportation costs to the event will be fully reimbursed. The Keweenaw National Historical Park Advisory Commission also reimburses transportation costs of youth group field trips to any of the Keweenaw National Historical Park units or Heritage Sites. In addition to reimbursing transportation costs to the park, a healthy, locally sourced lunch will be provided to every student, educator, chaperone, and volunteer attending the Copper TRACES program. Thanks to the Heritage Sites, community partners, the National Park Foundation, and the Keweenaw National Historical Park Advisory Commission, Copper TRACES is sure to be the biggest student program ever hosted by Keweenaw National Historical Park.

To learn more about additional education programs offered by Keweenaw National Historical Park, please contact Emma Woodruff or Valerie Newman.

By Emma Woodruff, Interpretive Park Ranger

Keweenaw Heritage Sites



A.E. Seaman Mineral Museum



Visit the Mineral Museum of Michigan. Explore mineral collections from the Keweenaw Copper District, the Lake Superior Iron District, throughout Michigan and beyond.

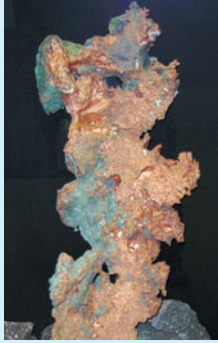
Location: Michigan Technological University, 1404 E. Sharon Avenue, Houghton. Free parking at museum.

Open: January 13 - April 30, Tuesday - Friday, 9:00 AM to 4:00 PM
May 1 - December 23, Monday - Saturday, 9:00 AM to 5:00 PM

Fees: 2-Day Admission \$5.00 adult, \$2.00 9-17 years, \$4.00 senior (65+ years), \$3.00 student with ID, children 8 and under free with adult. Check website for holiday closures and latest information.

(906) 487-2572

www.museum.mtu.edu



Delaware Copper Mine

At Delaware Mine, visitors can take a self-guided tour of one of the oldest underground copper mines on the Keweenaw Peninsula.

Location: Off U.S. Highway 41, 12 miles south of Copper Harbor

Open: Mid-May - mid-October, daily, 10:00 AM to 6:00 PM

Fees: \$11.00, Ages 13 & up; \$7.00, ages 6 thru 12, 5 & under free.

(906) 289-4688

www.delawarecopperminetours.com



Adventure Mining Company

This site offers guided tours of a historic mine that operated from 1850 to 1920. Four different tours ranging from 60 minute walks (first come, first serve) to 6-hour excursions (advance reservations) accommodate all ages and interests. Free use hiking trails.

Location: 200 Adventure Avenue, Greenland

Open: May 27 to mid October, Monday - Saturday, 9:00 AM to 6:00 PM; Sunday, 11:00 AM to 6:00 PM (Closed Wed. after Labor Day)

Fees: 60-minute tour \$14.00 adults, \$7.50 children (6 to 12 years old), under 6 free. Contact for rates on other tour options.

(906) 883-3371

www.adventuremine.com



Eagle Harbor Lighthouse and Museum

This site contains the lighthouse, keeper's quarters, and several museums. Nearby is the Rathbone schoolhouse and new Life-Saving Museum.

Location: Eagle Harbor

Open: Lighthouse & Museum, June 12 - October 11, 12:00 PM to 5:00 PM.

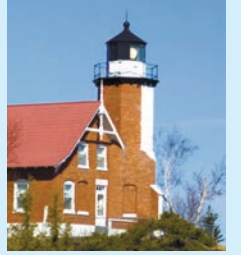
July & August, 10:00 AM to 5:00 pm, Sundays, 12:00 pm to 5:00 pm.

Fees: \$5.00 adults, 16 years & under free with adult.

School & Life-Saving Museum, 9:00AM - 5:00PM, June 10 - October 14.

(906) 289-4990

www.keweenawhistory.org



Calumet Theatre



Opened in 1900, this historic proscenium arch opera house offers a variety of theatrical, musical and community events year-round. Guided and self-guided tours.

Location: 340 Sixth Street, Calumet

Open: Year round, Wednesday - Friday, 12:00 PM to 5:00 PM. Additional days and hours in summer (Guided tours - please call for availability)

Fees: Guided tour \$6.00 adults, \$3.00 children (3 to 15 years), under 3, free; Self-guided tour \$4.00 adults, \$2.00 children, under 3 free.

(906) 337-2610 or (906) 337-2166

www.calumettheatre.com



Finnish American Heritage Center



Located on the campus of Finlandia University, the Finnish American Heritage Center houses the Finnish American Historical Archive and Museum, a theater, an art gallery, and the offices of *The Finnish American Reporter*. Regular performances and art exhibits highlight Finnish culture.

Location: 435 Quincy Street, Hancock

Open: All year, Monday - Friday, 8:00 AM to 4:30 PM

Fees: Free for Archives and museum, fee for scheduled performances.

(906) 487-7302

www.finlandia.edu/fahc.html



Fort Wilkins Historic State Park



The U.S. Army built Fort Wilkins in 1844 to keep the peace in Michigan's Copper Country. It now serves as an example of mid-19th century army life on the northern frontier. The park also includes the Copper Harbor Lighthouse along with the 1848 light keeper's house and interpretive trails. The lighthouse is reached by boat daily through the summer season.

Location: 15223 U.S. Highway 41, Copper Harbor

Open: Daily, 8:00 AM to dusk. Buildings open May 15 - October 16. Living history role players in the Fort from June 18 - August 19.

Fees: Michigan Recreation Passport required.

(906) 289-4215

www.michigan.gov/historicfortwilkins



Carnegie Museum

The Carnegie Museum of the Keweenaw shows changing exhibits about the area's cultural and natural history. Founded in 2006, the museum is housed in the former Houghton public library building which was built in 1910.

Location: 105 Huron Street, Houghton

Open: Year round Tues. & Thur. 12:00 PM to 5:00 PM, Saturday 12:00 PM to 4:00 PM; July 5 - Sept. 3, Tues. - Fri. 12:00 PM to 5:00 PM, Saturday 12:00 PM to 4:00 PM

Fees: Free for exhibits, summer trolley tours \$25 per person.

(906) 482-7140

www.carnegiekeweenaw.org



Hanka Homestead Museum

Herman Hanka settled here with his family after he was disabled by a copper mining accident. Volunteers provide guided tours of this 1920s-era Finnish farm. A self-guided brochure is also available.

Location: Six miles west of U.S. Highway 41, off Tower Road, Pelkie

Open: Memorial Day - Labor Day, Tuesday, Thursday, Saturday, Sunday and Holidays, 12:00 PM - 4:00 PM. AUGUST 20 FAMILY HERITAGE DAY.

Fees: Adults \$3.00, children \$1.00, Call ahead for large group tours.

(906) 334-2601

www.hankahomesteadmuseum.org



Central Mine Site



This site tells the story of one of the Keweenaw's most successful mines and of the over 1200 people who lived here. Two homes are open for self-guided tours. An established trail winds across the site.

Location: Just off U.S. Highway 41.

Open: Visitor center - June 12 thru October 11, daily, 9:00 to 5:00 PM

Fees: Donations appreciated

(906) 289-4990

www.keweenawhistory.org



Chassell Heritage Center

Exhibits follow Chassell's history from a logging camp to today. A collection of vintage clothing provides a glimpse into people's lives.

Location: 42373 Hancock Street, Chassell

Open: July 1 - August 30, Tuesdays & Saturdays, 1:00 PM to 4:00 PM & Thursdays, 4:00 PM to 9:00 PM. with a program at 7:00 PM.

Fees: Donations appreciated.

(906) 523-1155

www.chassellhistory.org



Copper Country Firefighters History Museum



Built in 1898, the historic Red Jacket Fire Station features displays dedicated to the history of fire fighting in Michigan's Copper Country. The historic fire trucks appeal to people of all ages.

Location: 327 Sixth Street, Calumet

Open: Mid-June - Mid-Sept., Monday - Saturday, 1:00 PM to 4:30 PM

Fees: \$3.00 per person, children under 12 free.

(906) 337-4579

www.coppercountryfirefightershistorymuseum.com



Copper Range Historical Museum

Artifact-rich displays depict people's lives and work experiences in the range towns of southern Houghton County during the copper mining era.

Location: 44 Trimountain Ave. (Business District), South Range

Open: June 7 - September 30. June & September, Tuesday - Friday, 12:00 PM to 3:00 PM. July & August, Monday - Friday, 12:00 PM to 3:00 PM

Fees: \$1.00 for adults. Children & members are free. Group tours welcome by appointment. Please call (906) 482-3097.

906-482-6125

www.pasty.com/crhm



Coppertown Mining Museum



Housed in the former Calumet & Hecla pattern shop, this museum features exhibits on the former copper mining giant's underground and surface operations.

Location: 25815 Red Jacket Road, Calumet

Open: Early June - late September, Monday to Saturday, 11:00 AM to 5:00 PM

Fees: \$4.00 adults, \$2.00 6 to 15 years old, under 6 free. \$3.00 tour groups & Golden Age passport.

(906) 337-4354

www.uppermichigan.com/coppertown



Houghton County Historical Museum

Explore this seven-building complex, which includes a museum containing artifacts and photographs spanning 100 years, one-room schoolhouse, log cabin, railroad depot, research center, and an operating 1915 C&H 0-4-0 steam train.

Location: 53150 Michigan State Highway 26, Lake Linden

Open: Museum, June 18 - Sept. 30, daily 12:00 PM - 4:00 PM. Train rides (either gas engine or steam engine), June 18/19 - Sept. 30, weekends only 12:00 PM - 4:00 PM. Perl Merrill Research Center, summer hours 9:00 AM - 12:00 PM; winter hours 9:30 AM - 12:00 PM.

Fees: Museum- Adult (17-61) \$5.00, Senior (62 and over) \$4.00, Student (6-16) \$3.00, Child (under 6) free. Train rides- Adult (17-61) \$5.00, Senior (62 and older) \$4.00, Student (6-16) \$3.00, Child (under 6) \$2.00. Perl Merrill Research Center- no fees; donations accepted for materials and time.

(906) 296-4121

www.houghtonhistory.org



Keweenaw Heritage Center at St. Anne's

Keweenaw Heritage Center marks the entrance to downtown Calumet and to Calumet Township heritage. A student-produced video showcases Fifth Street in the 1910 era. *Discover A Woman's Place* reveals women's roles from 1910 to 1914. Two other exhibits—the story of the building and the magnificent stained glass windows—focus on this sandstone structure built as a church for French-Canadians. Some afternoons, organists provide music.

Location: 25880 Red Jacket Road (corner of Fifth & Scott Streets), Calumet
Open: June 30 - Labor Day, Monday - Friday, some Saturdays, 1:00 PM to 4:30 PM
Fees: \$3.00 adults, under 16 years free with adult
 (906) 337-4579 www.keweenawheritagecenter.org



Old Victoria

Four log cabins, restored at their original remote mining location, give visitors a true feeling of the life faced by copper miners and their families. Guided tours will take you back in time for an hour.

Location: 25401 Victoria Dam Road, Rockland
Open: June 11 thru October 9, Daily, 11:00 AM to 5:00 PM
 JUNE 26 LOG CABIN DAY CELEBRATION AND AUGUST 21 CRAFT FAIR
Fees: Guided Cabin Tours – \$5.00 over age 13, \$2.00 ages 6-12 and under 5 free. Extended tours available; self-guided grounds tours free.
 (906) 886-2617 www.facebook.com/oldvictoria



Ontonagon County Historical Society Museum

The museum features exhibits on area mining, logging, farming, marine, and social memorabilia. Tours are provided of the nearby lighthouse.

Location: 422 River Street, Ontonagon
Open: Mid-April to mid-June, open Tues. - Sat. 10:00 AM - 5:00 PM. Mid-June to mid-October, daily 10:00 AM - 4:00 PM. Mid-October to Christmas, Mon. - Sat. from 10:00 AM - 5:00 PM. Jan. - mid April, Fri. and Sat. 1:00 PM to 4:00 PM. **Lighthouse tours:** 11:00 AM, 1:30 PM, and 3:30 PM.
Museum Fees: Adults \$3.00, 16 & under free;
Lighthouse Fees: Adults \$5.00, \$1.00 12 years and under.
 (906) 884-6165 www.ontonagonmuseum.org



Laurium Manor Mansion Tours

Thomas Hoatson Jr., owner of the Calumet & Arizona Mining Company, built this 45-room, 13,000 sq.ft. home in 1908 using the finest and rarest building materials available. Self-guided tours. Lodging available year round.

Location: 320 Tamarack Street, Laurium
Open: May 1 - October 26, daily, 11:00 AM to 5:00 PM. Call in winter.
Tour Fees: \$7.00 for adults, \$4.00 for ages 17 and under and students.
 (906) 337-2549 www.laurium.info

Michigan Tech Archives

The Michigan Tech Archives house a wide variety of print, graphic, and manuscript resources. The department's holdings include collections from the Quincy Mining Company and the Calumet & Hecla Mining Company.

Location: Garden Level of the Van Pelt and Opie Library, Michigan Tech, Houghton
Open: Monday - Friday, 10:00 AM to 5:00 PM.
Tours: Monday, Wednesday, Friday, 10:00 AM to 12:00 PM - limited space
 (906) 487-2505 www.mtu.edu/library/archives



Porcupine Mountains Wilderness State Park

In addition to wild forests and lakeshores, Michigan's largest state park has numerous historic copper mining sites. The 59,020-acre park offers an array of summer and winter recreational pursuits and interpretive programs.

Location: 15 miles west of Ontonagon
Open: Year round. Wilderness Visitor Center- mid-May - mid-October, daily, 10:00 AM to 6:00 PM EST
Fees: Michigan Recreation Passport required.
 (906) 885-5275 www.mi.gov/porkiesvc



Quincy Mine Tours

On a two-hour tour of the Quincy Mine, visitors take a guided walk through the hoist house, ride a cog-rail tram, and enter the mine to learn about mining life. Shorter, surface-only tours are also available.

Location: 49750 U.S. Highway 41, Hancock
Open: April 22-24, 9:30 AM to 5:00 PM (gift shop open; tours weather dependent). April 29 - May 30, Thursday - Saturday, 9:30 AM to 5:00 PM. June 3 thru October 23, daily 9:30 AM to 5:00 PM
Fees: Full tour – \$20.00 adults, \$10.00 6-12 years old, under 6 free; Senior, military and AAA discounts available. Call for surface-only tour rates.
 (906) 482-3101 www.quincymine.com



Isle Royale and Keweenaw Parks Association

Join, Save, Support

Join the Isle Royale and Keweenaw Parks Association and save 10% on Keweenaw and Isle Royale books and other products. Your membership entitles you to savings at our sales outlets, purchases through our online bookstore and at other participating national park bookstores around the country.

By joining, you are making a direct contribution to our public lands partnered with the Isle Royale and Keweenaw Parks Association. Sale proceeds are combined with membership gifts to support research and educational programs pertaining to Isle Royale and Keweenaw National Historical Park. Every year the Isle Royale and Keweenaw Parks Association contributes approximately \$25,000 in cash and in-kind aid to the two parks.

Membership

Tax-deductible membership levels are:

Life	\$1200 (Payable in 4 installments)
Patron	\$250
Sustaining	\$100
Supporting	\$50
Household	\$35
Individual	\$25



Call 1-800-678-6925, or join online at www.irkpa.org

Benefits

A 10% discount on all purchases from Isle Royale and Keweenaw Parks Association outlets and other participating national park visitor centers across the U.S. Special invitations to park programs, trips, and events

Featured Selections

Want to learn more about Keweenaw National Historical Park? Check out these items available from the Isle Royale and Keweenaw Parks Association. Sales outlets are located at the Calumet Visitor Center in Calumet, the Quincy Mine Association gift shop, and the Isle Royale National Park Visitor Center in Houghton.

Shop today at www.irkpa.org or by phone: 1-800-678-6925. Become a member and receive a 10% discount!



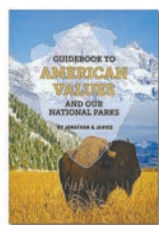
Advice From a Copper Miner

Custom advice with graphic designer Mike Stockwell's image on a black background. Magnet \$3.99. Postcard or laminated bookmark \$2.75. Wood plaque (5 x 10 in.) \$9.95. Adult-sized black heavyweight shirts: T-shirt (100% preshrunk cotton) S-XL \$16.95, 2XL \$18.95. Sweatshirt (50/50 cotton/poly) S-XL \$24.95, 2XL \$26.95.



Company Towns of Michigan's Upper Peninsula

From the Keweenaw across the U.P., author Christian Holmes uncovers rich stories of struggle and celebration as he explores what remains of former company towns and their lasting legacy in the identity of the Upper Peninsula. 128 pages.



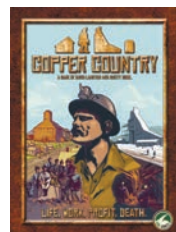
Guidebook to American Values and Our National Parks

Celebrate the 2016 National Park Service Centennial with Director Jon Jarvis as he examines the evolution of the national park idea, featuring parks that represent more than 50 shared American values. Preface by Dayton Duncan. 60 pages.



Copper Country Cookery

The Ladies Aid Society of the Laurium Methodist Episcopal Church published this cookbook in 1902 to raise funds for building the church. Like other traditional cookbooks, it includes instructive "household hints" of the period. 100 pages.



Copper Country Board Game

Copper Country natives David Lankton and Scott Diehl found inspiration for this game from David's dad, noted historian Larry Lankton. Grow your own mining company and acquire as much copper as possible before it runs out. 2-4 players, age 14+, 60-120 minutes.



Jr. RangerLand National Park Jigsaw Puzzle

Young explorers can visit (or revisit) the nearly 60 national parks in the United States as they assemble the 48 pieces of this colorful puzzle! Ages 4 and up. 24" x 18." Haywood Studios donates a portion of Jr. RangerLand profits to the NPS.

National Parks of Lake Superior Foundation



WITH OVER 2,725 MILES OF SHORELINE, Lake Superior is home to some of the most beautiful natural features in the world. The National Parks of Lake Superior Foundation strives to support these natural resources and the cultural heritage of the five U.S. National Park Service venues on Lake Superior.

The five national park sites are Apostle Islands National Lakeshore, Grand Portage National Monument, Isle Royale National Park,

Keweenaw National Historical Park, and Pictured Rocks National Lakeshore.

Through the funding of research, maintenance and educational projects, the National Parks of Lake Superior Foundation collaborates with the National Park Service to continue the legacy of our National Parks for current and future generations.

A Cause to Celebrate

THE NATIONAL PARK SERVICE TURNS 100 ON August 25, 2016, and the Keweenaw is celebrating.

The Centennial will kick off a second century of stewardship of America's national parks by continued engagement of communities through recreation, conservation, and historic preservation programs. At Keweenaw National Historical Park, the Founder's Day Open House on August 25 will be a feature of the celebration. Historical demonstrations, children's activities, guided tours, and other events will take place to ensure there's something for everyone.

But wait, there's more! Calumet Township is also celebrating its sesquicentennial anniversary during the last week of August. Historic building and church tours will be featured alongside a



parade, street dance, and other happenings. Top it all off with a show on July 17 at the historic Calumet Theatre, where the Chassell Friends of Fashion will present their own type of window to the past. They have created a historical fashion show combined with a history lesson to honor the Centennial. Keep an eye out for information on the Copper Country Fall Color Tour, where we partner with an area cycling club to showcase one of the best one-day rides in the Midwest.

For a full list of Centennial-related events and activities happening at Keweenaw National Historical Park, please visit our website at www.nps.gov/kewe or www.findyourpark.com. See you there!

By Lynette Webber, Park Guide

Step into History

NATIONAL PARKS ARE GREAT PLACES TO ENGAGE IN HEALTHY physical activity like hiking canyons, kayaking scenic rivers, and climbing mountains. But you do not have to travel to the Smoky Mountains or Yosemite to explore park trails. Keweenaw National Historical Park, in partnership with the Western U.P. Health Department, local businesses, and volunteer groups, will host a series of monthly guided walks in 2016 to points of interest in and around the park's Calumet and Quincy Units. The park and health department received an Active Trails grant from the National Park Foundation to promote national parks as places to practice healthy lifestyle habits.

The Active Trails program, called "Step Into History," features short hikes for all ages and abilities, led by health educators and park rangers. Each one-hour event includes a brief talk about history in the mining district with the focus on getting outdoors "for the health of it." Activities planned for the spring and summer include curling in a historic drill house, exploring Swedetown Trails, and taking surface tours of mine locations on Mine Street in Calumet and atop Quincy Hill. The hikes are free with no registration required. At each event you will have a chance to win door prizes and track your participation on a punch card for a chance to win larger prizes at the end of the year.

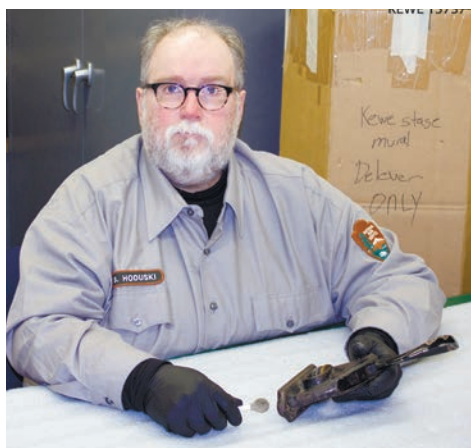


To learn more about upcoming events, look for Step Into History announcements on the park's Facebook page, in the Daily Mining Gazette, on local radio stations and on posters, or call the Health Department at 906-482-7382 and ask for Bridget or Arnie.

By Ray Sharp, Community Planning & Preparedness Manager, Western U.P. Health Department

A Curator's Life

SOMETIMES A PERSON GETS LUCKY. I KNOW I DID, THE DAY then-Keweenaw National Historical Park Superintendent Frank Fiala called and offered me a job. Lucky, because in accepting it, I was going to be able to continue my National Park Service career living and working in Michigan's Upper Peninsula. Lucky, also, because it was going to be an exciting challenge, coming in on the ground floor of a new park, one that told a sweeping and powerful story of American industrial development and history.



Superintendent Fiala had hired me to initiate a brand-new park museum program, as he had just acquired the extensive collections of the last Calumet & Hecla Chief of Security, Jack Foster. Jack had taken it upon himself to preserve the history of the company he had worked for most of his life, including a wide variety of objects and business records associated with the company's history.

By that point in August 1999, I had over eleven years working with the National Park Service. Like many in the park service, pursuing my career had meant moving around. While my academic training had been as a fisheries biologist, which led to my first National Park Service job in 1986 at Ozark National Scenic Riverway, serendipity pointed me towards museum work.

I am married to a teacher, and when she was offered a job in a small farming community about sixty miles east of Kansas City, Missouri, I cast about for a nearby park service job. The nearest possibility was at the Harry S. Truman National Historic Site, in Independence, Missouri. Again, by good fortune, they had an opening in the former home of Harry and Bess Truman.

In 1993, I found myself ready for a new challenge and was offered a position at Pictured Rocks National Lakeshore. My Dad is a Yooper, and through all my life of coming up to the farm, the

Upper Peninsula had become the next best thing to Heaven. I was to be duty-stationed at the far-east end of the park, where the museum collection was stored, in Grand Marais, Michigan.

So, when I arrived at Keweenaw, I was ready for its challenges, both professionally and culturally. Little did I know that those challenges would keep me here for the next seventeen years.

During those years the museum operation has evolved into an important asset for the park and for the greater Keweenaw community. The park's museum staff provides museum advice and training to our Keweenaw Heritage Site partners. We contribute to area, regional, national, and international scholarship and genealogy in the 2.2 million copper-related historic photographs, business and organizational records, and personal and family papers we have preserved and make available for research. Our collections have informed historic structure rehabilitation projects, journal articles, magazine and newspaper articles, master's theses, doctoral dissertations, popular histories, web and museum exhibits, and scores of family histories.

You can stop in at our visitor center and enjoy our "Risk and Resilience: Life in a Copper Mining Community" exhibits. Almost every item displayed in the "Risk" exhibit is directly associated with Calumet or the Copper Country, or is a reproduction of something that is.



This hoodwink, used in lodge rituals, is from the Jack Foster collection.

And on the subject of that exhibit, being one of the team members who had the privilege of creating and installing that exhibit was perhaps the high point of my career. And do you know what? Included in that exhibit are several of Jack Foster's objects which I had the pleasure of archiving seventeen years ago. I made sure of it.

By Brian Hoduski, Chief of Museum Services

Visiting Calumet



Photo by Gary Ennis

The Calumet Unit of Keweenaw National Historical Park tells the story of an immigrant community. Here you can discover the interactions of many historical forces at play, including social, ethnic, commercial, and paternalistic practices of the Calumet and Hecla mining town.

At the center of the unit is the Calumet National Historic Landmark District, where you can visit the Calumet Visitor Center, Keweenaw Heritage Center at St. Anne's, Coppertown Mining Museum, Copper Country Firefighters Museum, Calumet Theatre, and the Italian Hall Memorial Park. The park headquarters and Keweenaw History Center are also located nearby. Visitors can take part in self-guided walking tours of the downtown or the industrial core, or accompany a National Park Service ranger on a guided tour. For tour information, please contact the park or visit our website.

Calumet Unit



Visiting Quincy



Photo by Nathan Miller

Exploring the Quincy Unit of Keweenaw National Historical Park is fun for all ages and interests! Designated a National Historic Landmark District in 1989, the National Park Service, Quincy Mine Tours, and the Quincy Smelter Association partner to offer a variety of experiences. Quincy Mine Tours provides guided tours of the underground mine and hoist house, along with self-guided tours of the #2 shaft-rockhouse. Outside exploration of the site is free of charge and open to the public.

Also contained within the Quincy Unit, near the Portage Lake lift bridge, is the Quincy Smelting Works. Although currently enclosed by fencing, everyone is welcome to explore the perimeter of the property. You may also go on guided tours led by the Quincy Smelter Association and the Quincy Mine Hoist Association. Many buildings remain on the site, giving evidence to this once-flourishing industrial complex. In recent years, some stabilization and preservation work has been accomplished with the hope that the site will be open in the future.

Quincy Unit

