

With



Charles, the miner

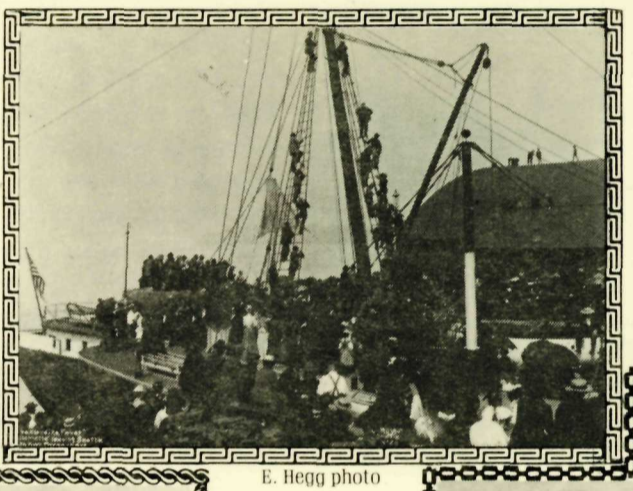
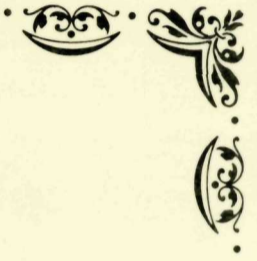
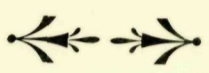
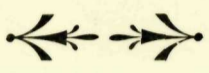


Emily, his wife

Barry Pritchard, playwright
Robert Hobbs, director



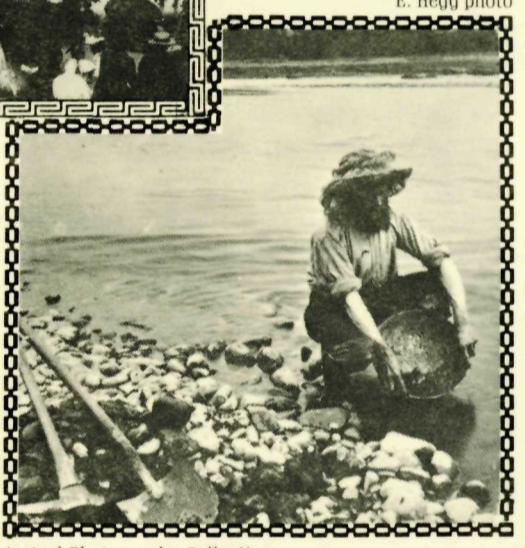
1979 summer production
personnel:
Austin Daily as Charles
Susan Stevens as Emily
Jennifer Lupton,
technical designer



E. Hegg photo



E. Hegg photo



E. Hegg photo



All Hegg photos courtesy University of Washington Historical Photography Collection

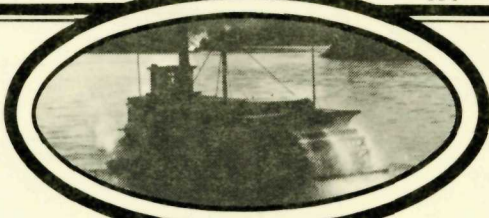
Historical Photography Collection,
University of Washington Library



THE KLONDIKE GOLD FEVER

SPONSORED BY
Pacific Northwest Region,
National Parks Service

PRESENTED BY
University of Washington School of Drama



LIVING HISTORY

comes to you!

GOLD FEVER

a live dramatic production

Now Available for Booking



On the heels of a severe world-wide economic depression in the 1800's, the Klondike Gold Rush of 1897-98 provided Seattle with an immediate boost which led to one of the city's most significant periods of growth and development. Millions of dollars poured into Seattle as tens of thousands of stampedeers rushed to outfit themselves for the arduous journey to the Klondike gold fields. Only a handful of stampedeers found enough gold to call themselves rich, and even fewer made it home with their wealth. Yet old timers have not forgotten the stampede for Klondike gold, which left Seattle forever changed—stamped with a special legacy of history.

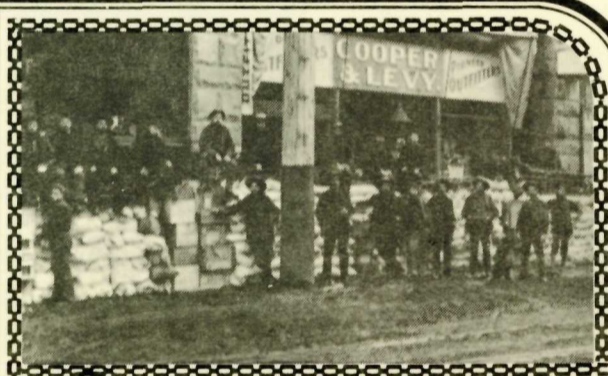
GOLD FEVER



, a live dramatic production, sponsored by the National Park Service and presented by the University of Washington School of Drama, will tour throughout the greater Puget Sound area. The original 40-minute drama was written by noted playwright Barry Pritchard, and is directed by University of Washington Professor Robert Hobbs. The drama depicts a miner, struck by gold fever, trying to make it from Seattle to the gold fields of the Yukon. The play features the recollections of the stampedeer through his letters and diary, with live folk music and authentic slides of old-time photographs showing Seattle, Alaska, and the Canadian Yukon in the late 1800's.

The

play is offered as the traveling extension of the special summer production of the drama performed at the new Klondike Gold Rush National Historical Park, located at 117 South Main Street in Seattle's Pioneer Square district. This unit offers exhibits, artifacts, films, slide programs and other services, and is open free to the public. Call 442-7220 for schedules and information concerning the new park unit.



E. Hegg photo

Do You

have a group of over fifty people who would enjoy seeing this entertaining play? The drama tour will run for seven months, October through April, and is available for booking free-of-charge. All you need is a facility with a ten by fifteen foot stage area and space for the audience. The room must offer a standard power source for lighting equipment and be darkened for slide projection. Performances may be scheduled weekdays, in the morning or afternoon. Special performance times are available if planned well in advance. Call 442-5201, Monday through Friday, 9 AM to 11 AM. The sooner you call, the better the possibility for your choice of date and time. Don't miss this exciting opportunity to offer your group a special performance of GOLD FEVER!



E. Hegg photo

Year of the Visitor

