

BOULDER DAM NATIONAL RECREATIONAL AREA

ARIZONA - NEVADA

UNITED STATES
DEPARTMENT OF THE INTERIOR

HAROLD L. ICKES, Secretary

NATIONAL PARK SERVICE

NEWTON B. DRURY, Director

BOULDER DAM NATIONAL RECREATIONAL AREA
Arizona and Nevada

Blue water in a land of canyons and mountains - a lake in the desert - that is the surprising center of this unique National Park Service unit.

In 1931 the Bureau of Reclamation of the United States Department of the Interior started construction of a gigantic dam in Black Canyon, and it was then that blue prints began to be transformed into concrete and steel.

Today Boulder Dam provides flood control, water conservation, silt control and power, and, as a bonus for America it adds recreation. As the dam grew, it backed up the waters of the Colorado River until now they form the great blue lake, called Lake Mead, which provides the center for a unique playground area of mountains, desert, canyons, and water. Under an interbureau agreement, the Bureau of Reclamation administers the dam itself and Boulder City, while all recreational plans, developments, and facilities in the Area are supervised by the National Park Service, also of the Department of the Interior.

At its highest level Lake Mead has a shoreline of more than 500 miles, a depth of 589 feet, and contains 30,500,000 acre-feet of water, the largest artificial lake in the world. The muddy Colorado River, as it enters the lake,

drops its load of silt to the bottom. As a result the lake waters are a vivid, unbelievable blue in a land of strangely colored desert mountains - tan, brown, red, lavender, purple - some stark and somber piles of rock, others soft-looking, subdued mountains, starved for water, that seem to reach down into the lake, rather than to climb up out of it.

LOCATION AND EXTENT ---

Boulder Dam National Recreational Area includes some 2,700 square miles. It joins Grand Canyon National Monument on the east and follows the course of the Colorado River in northwestern Arizona and southeastern Nevada, extending as far south as the old mining town of Searchlight, Nev. Desert plants and flowers, strange rock formations, relics of prehistoric Indian occupation, mementos of early mining days, glimpses of mountain sheep, various water birds, and wild burros make it a fascinating country for exploration. Lake Mead, now wide and open, now narrow between canyon walls, winds for 115 navigable miles from Boulder Dam into the Grand Canyon on the east, and extends an arm 30 miles north up the Virgin River.

MAJOR RECREATIONAL CENTERS ---

Principal recreational developments for the present are located at several points on Lake Mead including one at Hemenway Wash in the west near Boulder City, one near Overton on the Virgin River arm of the lake, and one at Pierce Ferry at the western entrance to the Grand Canyon. Additional development areas are strategically located and these are being developed as needed.

WEATHER ---

The Boulder Dam National Recreational Area is an all-year playground. Hot

weather may be expected from June 15 to September 15 but, with the dry air, the heat is not unduly oppressive.

WHERE TO STAY ---

Complete camping facilities for both tent and trailer campers are available five miles from Boulder City on the shore of Lake Mead near the bathing beach and boat landing. Limited facilities are also provided on the lake shore near Overton, Nev. and at Pierce Ferry, Ariz.

The best of air-cooled hotel and auto-court accommodations are available in Boulder City. Several cafes serve good meals at reasonable prices. There is a tent-cabin lodge at Pierce Ferry which is open from October 1 to June 1. A variety of excellent accommodations are also available at Las Vegas, Nev. and Kingman, Ariz.

HOW TO REACH THE AREA ---

By Motor: U. S. Highway No. 91 between Salt Lake City and Los Angeles passes through Las Vegas and there connects with U. S. Highways Nos. 93 and 466 leading southeastward to Boulder City. From Las Vegas it is 23 miles over paved road to Boulder City and 7 miles farther to Boulder Dam. U. S. Highway No. 66 between southern California and northern Arizona passes through Kingman where connections may be made for the 75-mile drive to Boulder Dam, Lake Mead, and vicinity over U. S. Highways Nos. 93 and 466.

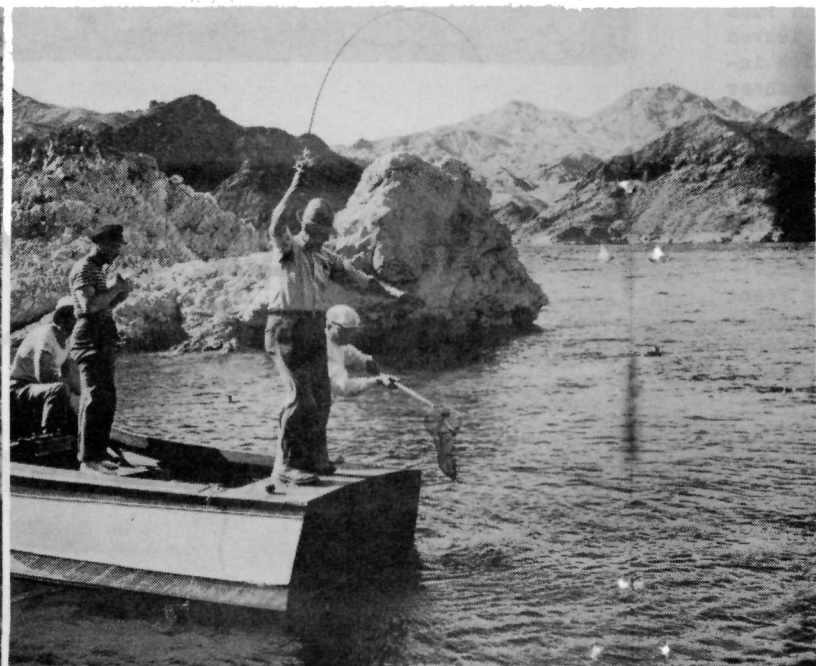
By Rail: Travelers on the Union Pacific detrain at Las Vegas and those on the Santa Fe detrain at Kingman. At both points they are met by scheduled stages for the trip to Boulder City.

By Bus: There are scheduled bus services from both Kingman, Ariz. and Las Vegas, Nev.

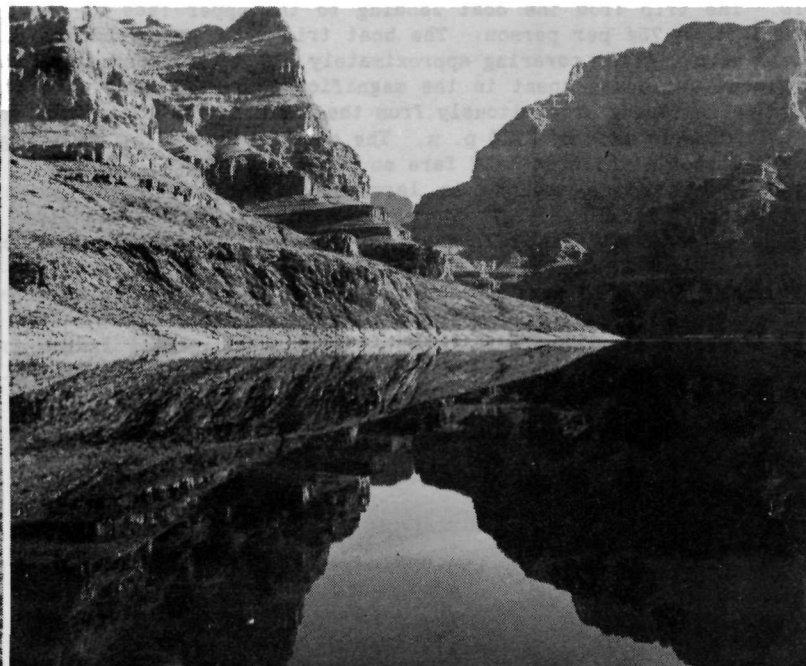
Boulder Dam from the Air



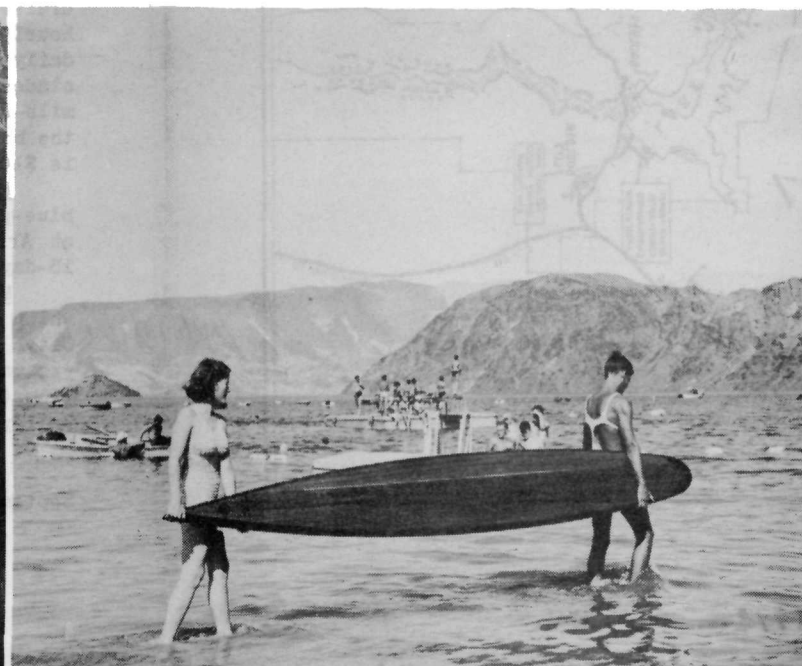
Thrills for the fishermen



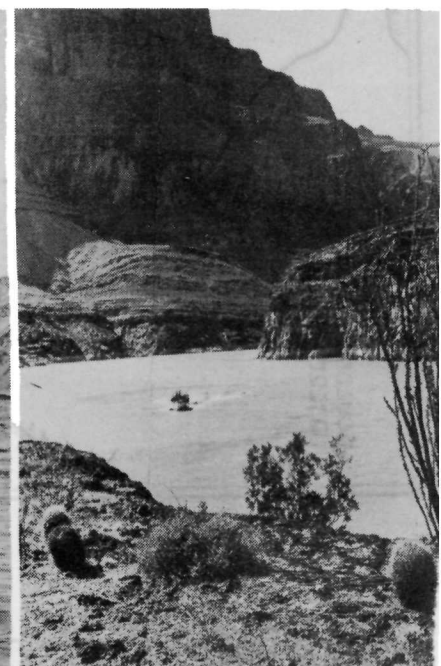
The lake reflects the canyon's jagged walls

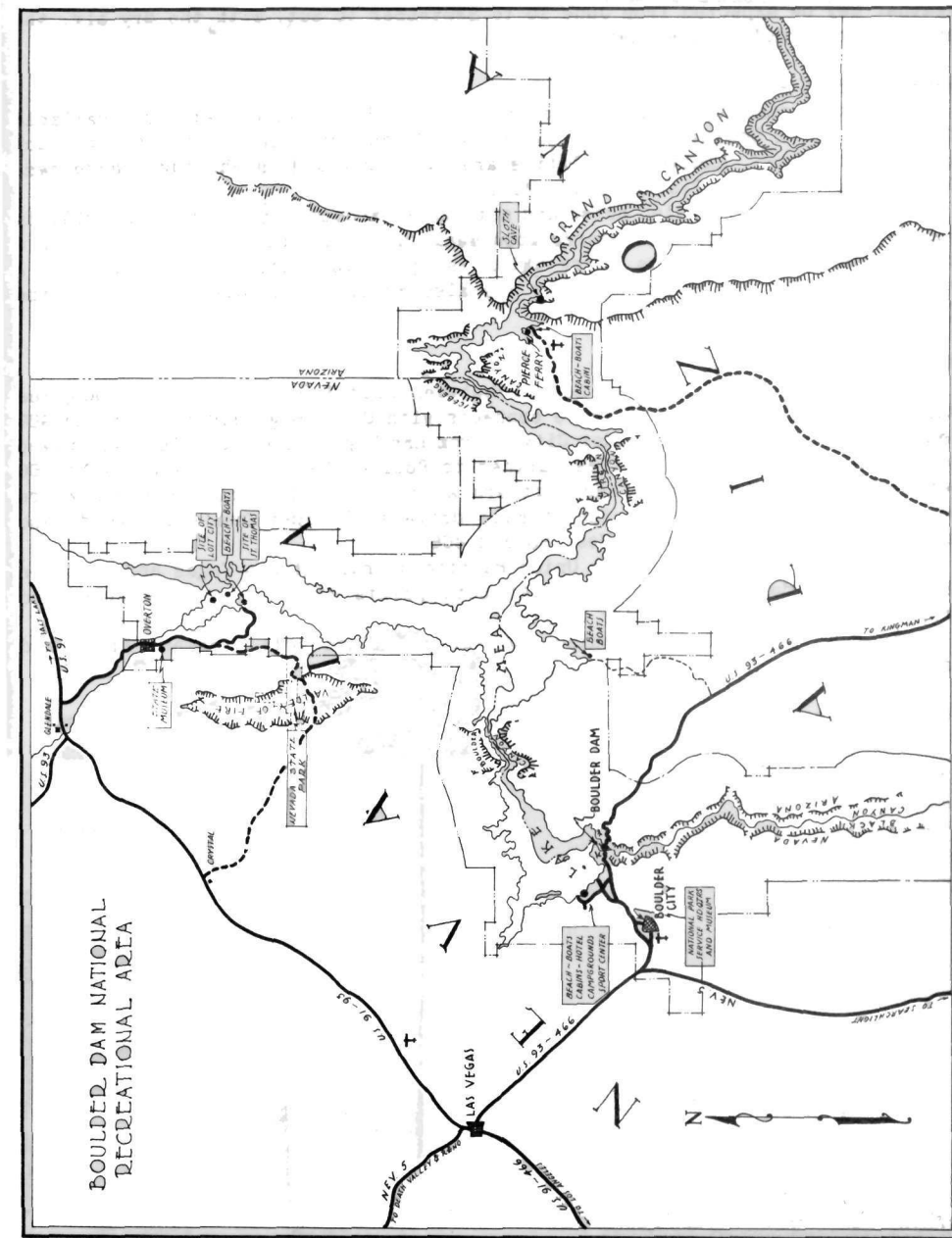


Water sports are many and varied



Sightseeing by motorboat





By Air: Transcontinental and Western Air, Inc., provides daily plane service to Boulder City, while Las Vegas is served by Transcontinental and Western Air, Inc., and Western Air Express.

ADMINISTRATION: The National Park Service representative in direct charge is Supervisor Guy D. Edwards. He is assisted by a force of rangers and naturalists. The Service's headquarters building is at the junction of Park Place and Park Street in Boulder City. Visitors are welcome.

INTERPRETIVE SERVICE AND RECREATIONAL FACILITIES

Natural color pictures accompanied by talk by National Park Service naturalist on the attractions of this new playground are presented twice daily at 11 a. m. and 1:15 p. m. in the Boulder City Theater. No charge.

Free motion pictures of the construction of Boulder Dam are shown continuously from 7:30 a. m. to 9 p. m. daily in the Boulder Dam Service Bureau located in the Boulder City Theater Building.

Free Museum of Natural History in the National Park Service Building in Boulder City is open daily from 8 to 5.

Guide service through Boulder Dam is provided by the Bureau of Reclamation daily between 7 a. m. and 10:15 p. m. from May 1 to October 1, and between 7:45 a. m. and 8:15 p. m. from October 1 to May 1; 25¢ per person, children under 16 free.

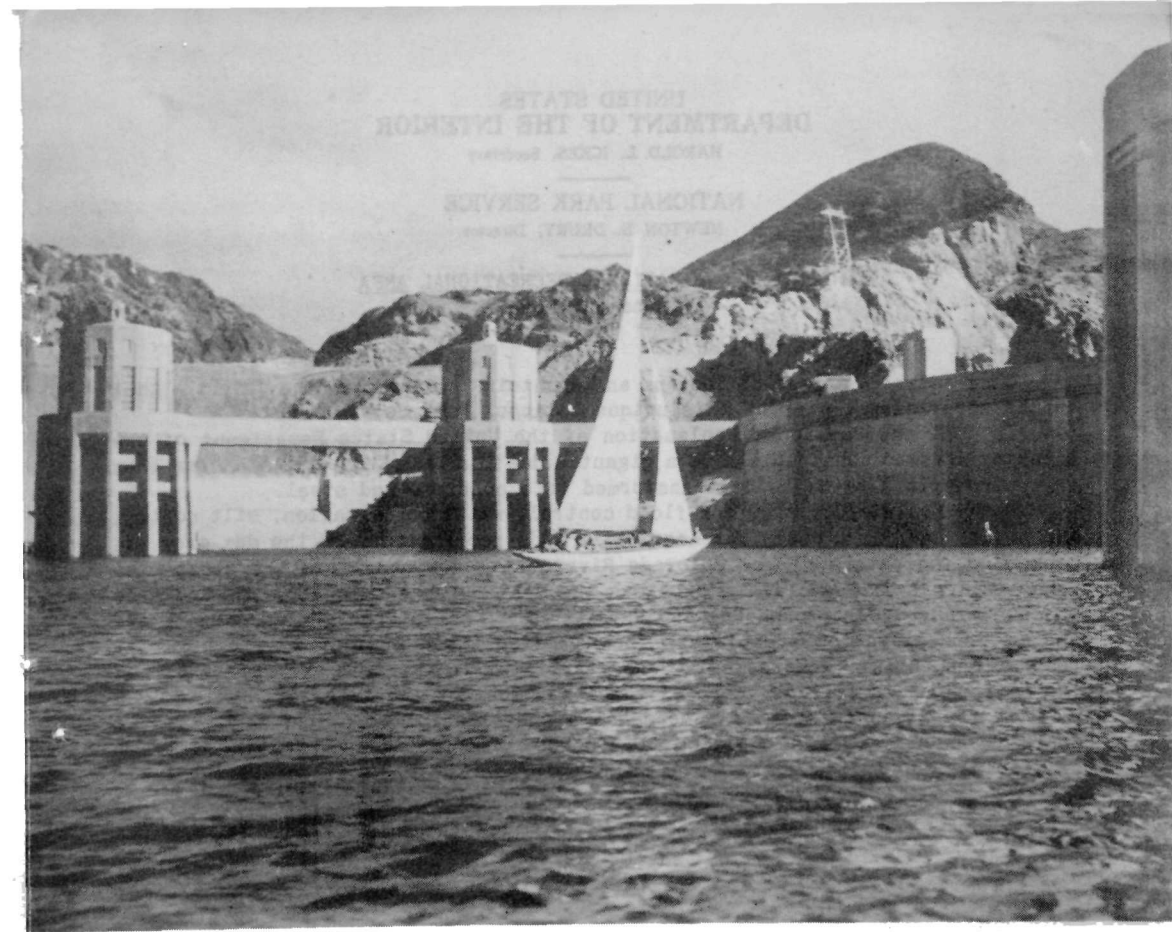
Swimming: At the Hemenway Wash Beach near Boulder City free facilities include dressing rooms, lifeguard protection, diving floats, etc. Similar facilities are also provided at beach near Overton, Nev.

Boating: More than 200 privately owned boats are now in use on Lake Mead. Boats must be registered with the National Park Service before being launched. The Grand Canyon-Boulder Dam Tours, Inc., maintains complete boat service from the rental of rowboats to regularly scheduled and charter trips by larger cruisers. The trip from the boat landing to the upper face of the Dam runs hourly and costs 75¢ per person. The boat trip into the Grand Canyon leaves daily at 8 a. m. After covering approximately 180 miles round trip, which includes almost two hours spent in the magnificent Grand Canyon with its sheer mile-high walls rising precipitously from the shore of Lake Mead, the return to the boat landing is made by 5:30 p. m. The cost of this trip, including lunch, is \$10 per person. Children half fare on all trips.

Fishing: The lake abounds in large-mouth bass, catfish, crappie, and blue-gill perch. Tackle and rowboats may be rented at the boat landing. Either an Arizona or a Nevada State license is required. Non-resident license \$3; 15-day tourist license is \$2.

Motoring: One mile west of the Dam a side road leads to Lakeview Point which offers a magnificent panorama. At Overton, an 89-mile drive from Boulder City, is a museum of archeology housing exhibits of ancient Indian artifacts excavated at the Lost City. The paved road continues to the beach 12 miles from Overton. The return trip may be made by way of the brilliantly colored Valley of Fire.

September 1940.



BOULDER DAM NATIONAL RECREATIONAL AREA

ARIZONA - NEVADA