

LASSEN

NEWS

Lassen Celebrates
Seasonal Changes For
National Park Week

Avalanche Training for
Rangers
History of Peter Lassen

Youth Camping Grants
Awarded

SPRING 2019

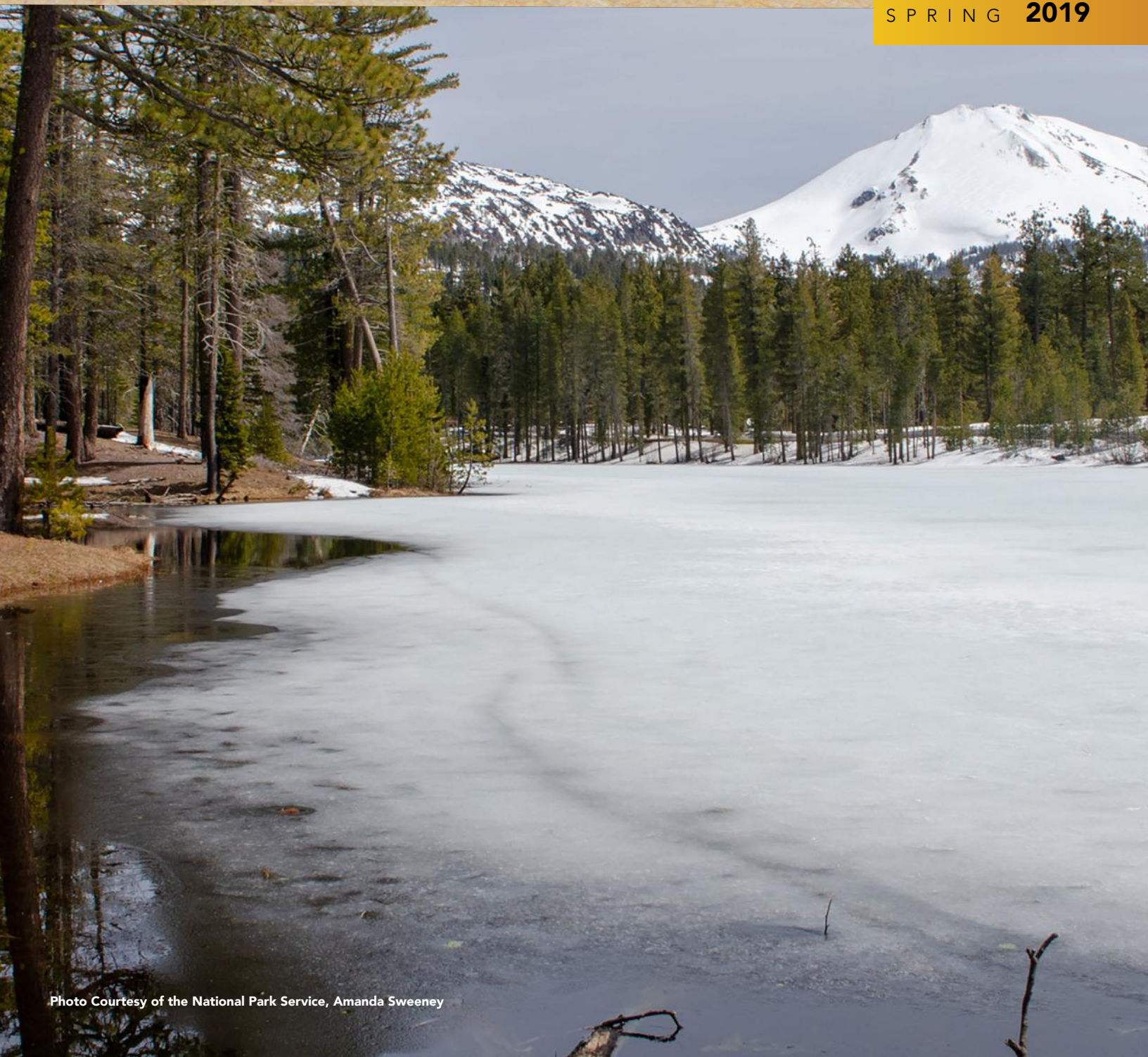


Photo Courtesy of the National Park Service, Amanda Sweeney



LASSEN CELEBRATES SEASONAL CHANGES FOR NATIONAL PARK WEEK

Lassen Volcanic National Park stepped into spring for this year's National Park Week. National Park Week was Saturday, April 20 through Sunday, April 28 with free entrance to Lassen Volcanic and all National Park Service sites. The winter's deeper-than-average snowpack is quickly disappearing from the Manzanita Lake Area, while the Southwest Area remains blanketed in 13 feet or more of snow.

"Visitors [were able to] hike a mostly snow-free loop around Manzanita or Reflection Lakes in the Manzanita Lake Area or enjoy spring snowshoeing or skiing in the Southwest Area," said Superintendent Richardson. "Spring also offers the unique opportunity to hike, run, or bike plowed sections of the park highway before they are opened to vehicles."

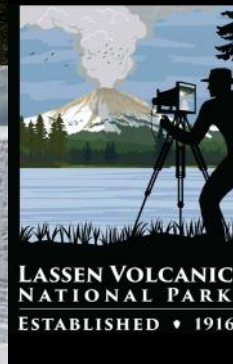
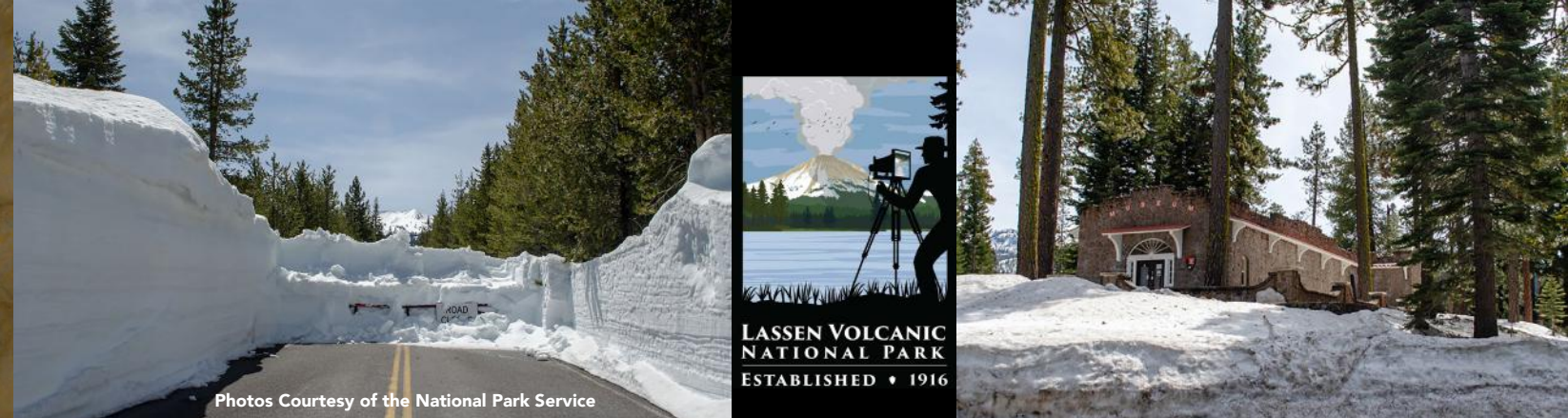
The annual spring road clearing process began in the Manzanita Lake Area on March 28. Clearing snow from the 30-mile highway and additional access roads takes two to three months on average. A ten-mile section of highway between Loomis Plaza and Devastated Area is currently cleared of snow and opened to vehicles on April 18, the same day road crews began clearing from the Southwest Area. A map of road clearing operations and status is available at go.nps.gov/lavo/snowclearing.

A new park entrance fee of \$30 per vehicle (valid for up to seven days) is now in effect. The Lassen Annual Pass is \$55. This year's pass features the 2019 Annual Pass Photo Contest winning photograph Cinder Cone (right) by Angela Ferrell of Red Bluff, California. Ferrell will receive photo credit and a \$50 gift certificate from the Lassen Association for use at one of its park stores. Additional entrance fees and passes can be viewed at go.nps.gov/lavo/fees.



Seasonal changes occur quickly in the spring season at Lassen Volcanic. Snow sports will continue to be the highlight of a visit to the Southwest Area for the coming months. However, spring conditions will quickly appear in the Northwest Area of the park. Visitors can learn more about opportunities to explore the park and anticipated conditions by month at nps.gov/lavo/planyourvisit.

Photo Courtesy of the National Park Service



LASSEN VOLCANIC NATIONAL PARK 2019

www.nps.gov/lavo/planyourvisit/special-events.htm

JUNE EVENTS

Ranger-Led Programs
June 14 - September 2

Acrylic Plein Air Painting Workshop
June 22nd @ Devastated Area
go.nps.gov/lavo/seminar

Manzanita Lake Guided Hike
June 29 & June 30, 10am - 12pm
go.nps.gov/lavo/seminar

JULY EVENTS

July 14, 8am to 9:30am
Bird Banding Demonstrations

Photography Field Workshop
July 26 -27 @ Manzanita Lake
go.nps.gov/lavo/seminar

AUGUST EVENTS

Dark Sky Festival
August 2 & 3, All Day Event
go.nps.gov/darksky

Discover Lassen Weekend
August 10th & 11th
This newly re-named event is a combination of two events fka Day in the Park & Reach the Peak Hike-A-Thon.
Details at LassenParkFoundation.org

SEPTEMBER EVENTS

Art, Wine & Beer of Lassen
September 7, 11am - 5pm
Kohm Yah-mah-nee Visitor Center

Peak Experience Auction
September 21, 5:30pm - 10pm
McConnell Foundation, Redding
LassenParkFoundation.org

Public Lands Day
September 28, Park Wide!
Volunteers receive free admission

MESSAGE FROM THE CHAIR

Thank you all for your support of Lassen Park Foundation (LPF) and everything you've helped us achieve for Lassen Volcanic National Park (LAVO) during the last 35 years.

LPF has raised over \$4 Million dollars to support LAVO since our inception in 1984. Of those funds, over \$2 Million has gone directly to capital projects such as the Lassen Crossroads, Kohm Yah-mah-nee Visitor Center, Lassen Peak Trail Rehabilitation, and my personal favorite the Volcano Adventure Camp.

As we look toward the next 35 years and beyond we want to share with you some of our upcoming projects. We're developing a multi-year Strategic Plan, we've revised our newsletter to eight pages to hold all the content we want to share with you, and we've expanded our Youth Camping Grants to fund 50 groups at the Volcano Adventure Camp this year. This will be our largest year ever!

We will be celebrating our 35th Anniversary at this year's Peak Experience Auction on 9/21/19 at The McConnell Foundation in Redding. We hope you will consider joining us!

Sincerely,

John Koeberer, Chairman
Lassen Park Foundation



YOUTH CAMPING GRANTS AWARDED



This year's Youth Camping Program at Lassen Volcanic National Park is gearing up to be a memorable one! It's always the goal of the Lassen Park Foundation Board of Directors to introduce as many kids as possible to our favorite national park each year.

We're happy to report that over 1,000 kids are anticipated to stay at the Volcano Adventure Camp this summer, home of the Youth Camping Program at Lassen Volcanic National Park.

These grants are made possible through the generosity of donors and sponsors like Art & Caroline Whitney. Thank you both for your generosity and support!

To the right is a list of the groups that are receiving a Youth Camping Grant this summer.

- Anderson New Technology High School
- Boys & Girls Club (B&G Club) of Bend
- B&G Club of Silicon Valley
- B&G Club, Chico Teen Center
- B&G Club, Hamilton Elementary School
- B&G Club, Oroville Teen Center
- Bethel Church Young Saints
- Boy Scouts of America (BSA) Pack 107
- BSA Troop 42
- BSA Troop 509
- BSA Troop 55G
- Charis Youth Center
- Cypress Elementary School
- Eagles Soar Youth Activities Center (ESYAC)
- Future Citizens Foundation
- Girls Inc. of the Northern Sacramento Valley
- Girls Inc. of West Contra Costa County
- Girl Scouts (GS) Heart of Central California
- Girl Scouts Northern California (GS NorCal) - Troop 70026
- GS NorCal - Troop 70031
- GS NorCal - Troop 70173
- GS NorCal - Troop 70213
- GS NorCal - Troop 70542
- GS NorCal - Troop 70576
- GS Sierra Nevada Troop 23
- Hill Country (Intermountain Teen Center)
- James McKee Elementary School
- Lava Beds National Monument
- LAVA Charter School
- Long Valley Charter School
- Mira Loma High School
- MLK Jr. Multicultural Community Center
- Nevada Outdoor School
- Nexus Youth & Family Services
- North State Wilderness Team
- RAWC inc.
- Red Bluff BSA Pack 17 & Troop 17
- Sierra Club ICO
- Sierra Institute P-CREW
- Stone Bridge School
- Sunnyvale Pathfinder Club
- The Stirring
- Today's Youth Matter
- TYC Club (Team of Youth Care)
- Woodland Charter School



Photo Courtesy of the National Park Service

PETER LASSEN

Pioneer, Path-Finder, Prospector and Entrepreneur

By Pete Dailey, LPF Board Member

On a cold, foggy day in 1830 a Packet Ship set sail from Copenhagen, Denmark, bound for Boston, carrying mail, commercial goods, and over a hundred immigrants crammed into steerage. Peter Lassen, then a 30 year-old blacksmith, short and slight-of-build but industrious, undertook the arduous journey, leaving friends and family to pursue economic opportunity in America.

The pioneer spirit gripped Lassen like a vice. He knew his blacksmithing skills would be valuable in the West, and he found Boston not much more desirable than Copenhagen. Just another big city, crowded and dirty, with people living on top of each other competing for jobs and resources. Within a few years, Lassen made his way to Missouri. By 1837, Lassen's considerable talents and admirable personal traits had enabled him to carve out a very successful life. Industrious, gregarious and affable, generous of spirit, and quick-witted, Lassen made friends easily. One friend in Missouri, John Sutter, would play a large role, not only in Lassen's life, but as a pioneer and historic figure in the history of the West. Although Lassen's very successful blacksmithing business in Missouri had provided the pioneer with enough income to buy a large farm, Lassen's industrious nature and entrepreneurial spirit prompted him to get involved with Sutter in a mill in Missouri. In this capacity, Lassen acquired knowledge of mill design and operation, adding it to his skill set. He was already a formidably self-sufficient pioneer, master blacksmith, woodsman and hunter. But Lassen's journey of discovery, still nascent, was about to take a very exciting turn.

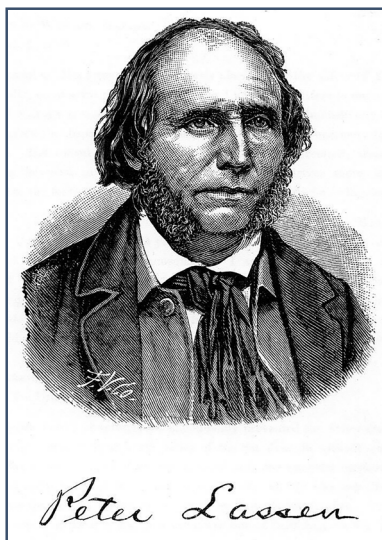
In 1838 the California Dream overwhelmed Lassen, and he set out for the West Coast, once again leaving behind a life he had established in Missouri. He joined a party of traders and fur trappers for the long trek across the untamed continent, picking up additional skills he would leverage on the new frontier.

The trip was fraught. The party was besieged by hail the size of "hen's eggs" just a few days into the journey. The pioneers met Sioux crossing the Platte, but avoided incident, later skirmishing with Crow, who were more hostile. When the party crossed the Nevada desert and faced the daunting Sierra Nevada,

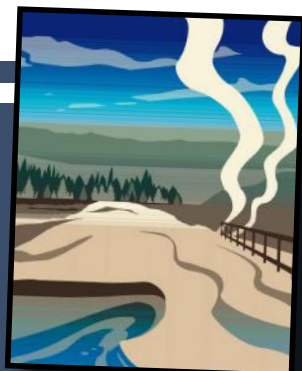
weather forced the party north to Oregon. Ultimately Lassen sailed down the Columbia River then south to Bodega Bay and entered California in 1840, then part of Mexico, as an illegal immigrant. Lacking proper papers, Lassen skirted established settlements making his way to his friend Sutter's mill in Coloma.

In 1843 some of Sutter's horses were stolen, and Lassen joined a posse to recover the stolen property with other notable pioneers of the time including John Bidwell. The posse rode all the way to Red Bluff before recovering the horses. Along the way, Lassen discovered the beautiful lands where Deer Creek emptied into the Sacramento River. He fell in love with the spot, and wrote to the Mexican governor seeking a land grant at what is now Vina. Lassen had to take Mexican citizenship, but he was granted a rancho and began homesteading in 1844. Lassen would later host John Fremont, Kit Carson, and their regiment at his rancho during Fremont's forays into the Pacific Northwest. Lassen, ever industrious and entrepreneurial, was the first to grow grapes and produce wine in California at his rancho in Vina. In addition to blacksmithing, millwork, and viticulture, Lassen was also known to make fine furniture and saddles. But even the sum of these endeavors was not enough to keep Lassen rooted at his rancho.

When gold was discovered at Lassen's friend Sutter's mill, waves of gold seekers began to pour into California. Lassen guided many of the new-comers, opening a new route into California that would become known as the Lassen Trail. In 1850 nearly a third of the immigrants would use the route, which was less steep and had better forage for animals, but was somewhat longer than the more popular southern routes.



In 1859 Lassen embarked on a prospecting trip to the Black Rock Desert in Nevada. He was mysteriously murdered in his camp one morning. The only member of the party to escape, a Mr. Wyatt, blamed the killing on natives, but several facets of the story remain questionable. The only item taken was Lassen's rifle, which Mr. Wyatt later reported finding in the possession of a native killed several years later. The Whiskey, horses, bacon, and money were not taken.



AVALANCHE TRAINING FOR RANGERS

It is recommended that anyone traveling in Lassen's backcountry during the snow season take an avalanche safety course, also known as an American Institute for Avalanche Research and Education (AIARE) 1, or equivalent. No matter your experience level, everyone can learn life-saving skills and science from this intensive course. Lassen Volcanic National Park (LAVO) requires an AIARE Level 1 Certificate for its Search & Rescue rangers. It enables them to travel safely in the backcountry and assist with rescue operations when needed.



"Many people that ski in the back country don't realize the risk."

In early April a couple LAVO employees were able to do just that thanks to generous donations raised through Lassen Park Foundation. The two park employees (shown here in the photo) were a brand new Law Enforcement ranger at Lassen, Jacob Waller (white helmet red jacket), and the new Fire Management Officer, Grant Gifford (foreground black helmet). The course was a 3-day class with 12-hour days spent almost exclusively in the field. Jacob and Grant learned the basics of avalanche assessment, condition assessment, hazard mitigation, and post avalanche response.

Richard Bothwell and others teach this course; Richard works with Outdoor Venture Club as an AIARE Level 1 and Level 2 Avalanche Educator. He is the only instructor that has a permit to conduct the class in Lassen Volcanic National Park.

"Many people that ski in the back country don't realize the risk," says Chief Ranger John Fish. "This class is the minimum requirement for both Lassen volunteers and paid Search & Rescue team members. It trains them how to assess avalanche risk, make sound route decisions and how to be a team member when operating in Lassen's back country."

John would like to remind everyone to, "be aware that Lassen has a significant amount of avalanche terrain; with the high snow packs this year the potential for an avalanche is high. Arm yourself with knowledge before attempting to go into the back country."

SUPERINTENDENT'S CORNER BY LAVO SUPERINTENDENT, JIM RICHARDSON



With all the devastating fires last summer, you might think there would be quick reactions from land management agencies that plan and execute fire fuels programs. I do not see the knee jerk that would be timely, but I do see long term projects that have been planned coming closer to implementation both in and around the park. At Lassen Volcanic National Park we are likely to see three somewhat unique projects completed this summer. Near Drakesbad we will see the Flatiron Ridge project implemented within the Lassen Wilderness. The project is using cross-cut hand saws to prepare firelines and thin around large legacy trees using a field crew we have put together through the Sierra Institute to comply with both the spirit and letter of the Wilderness Act. In the fall of 2020 we plan on igniting a prescribed fire on this 1600 acre unit. This project is funded by California Prop 1 funding for watershed restoration and forest health that came to the park as a grant from the Sierra Nevada Conservancy (SNC). The project will help protect Drakesbad and Warner Valley along with protecting the watershed for downstream communities.

Just east of the Manzanita Lake area, we are likely to see continued work in the Northwest Gateway project with an additional 900 acres of mechanical harvest and biomass thinning. That will continue the previously approved project to contract for specific harvest of marketable trees and thinning of small diameter trees to promote forest resiliency, and will be followed-up by prescribed burning in future years. The units within this project that surround the Volcano Adventure Camp are being prioritized for implementation later this year. This project is being funded by a CalFire grant through the California Climate Investments program that has been awarded to a multi-agency collaborative headed by the Fall River Resource Conservation District and is subject to being contracted in a timely way.

And then at Juniper Lake, you will see thinning around the inholder properties/cabins along the north and west sides of the lake. This work will improve the tree stand health while thinning for a fire protection benefit. The project connects to the thinning and pile burning we have completed along the approach road to Juniper Lake over the last few years. This is work supported by the same SNC grant for watershed protection that is funding the Flatiron project.

Several things have come together to make these projects "ripe" for this summer. First, each project has NEPA and cultural compliance completed, which often takes years to complete. Second, each involves collaboration and connection to the larger landscape working groups and neighbors who are also working towards similar projects. Third, the funding for all such projects has not just magically arrived, but has been carefully applied for funds from available sources. And finally, each of these projects will have Lassen oversight and supervision, but with the bulk of the work completed by non-government employees. This trend only works when we have all of these items come together for success. So no knee jerk, but a steady vision for restoration of the landscape that will be starting to ripen this summer.

"BUMPASS HELL" PENDLETON BLANKETS

If you would like to order your "Bumpass Hell" Limited Edition Pendleton blanket please visit our website at www.lassenparkfoundation.org and go to the "SHOP" page. The blankets retail for \$250 and can be shipped for \$17.95 or picked up for no additional cost at our office located in Anderson, Ca.



MEET OUR BOARD

View our full list of Board Members online at LassenParkFoundation.org

BOARD OF DIRECTORS

Chairman.....John W. Koeberer
 Vice-Chair, IT.....Robert Ono
 Vice-Chair, Youth & Projects.....Bob Warren
 Vice-Chair, GrantsElizabeth Norton
 Chief Financial Officer.....John Livernois
 Corporate Secretary.....Benjamin Webster
 Chair, Donor Development.....Patrick W. Carr
 Chair, CommunicationsDeborah Trotter
 Executive Officer.....Steve Williams
 Executive Officer.....Steven Jahr
 Executive OfficerArt Whitney

Zach Brunner, Honorary
 Michael Coogan
 Pete Dailey
 Harry W. Daniell, MD
 Lizabeth Forsberg
 Kacey Koeberer
 William Latham
 Wayne Maire
 George Perkins
 Nancy Piret
 Pam Pitts
 John Roth
 Dave Scott
 David Shakes
 John Sharrah
 Emilyn Sheffield
 Robert Simpson
 Randall L. Townsend
 Art Whitney
 Kenny Wilsey
 Laura Young, Event Chair
 Steven Zarwell

AGENCY LIAISONS

Superintendent Lassen Volcanic
 National Park.....Jim Richardson
 Chief of Interpretation & Education
 Lassen Volcanic National Park.....Kevin Sweeney

STAFF

Executive DirectorJennifer R. Finnegan
 Assistant Director.....Marissa Young



Patrick W. Carr

Patrick W. Carr has served on Lassen Park Foundation's Board of Directors since 2010. Pat retired from the California Department of Transportation, having worked in transportation planning and external affairs in the Sacramento, San Francisco Bay, and Redding areas. Mr. Carr has held leadership and trustee/director/member positions on various charitable and education-related boards, including the San Francisco Maritime National Park Association Trustee, Friends of Whiskeytown (National Recreation Area), Shasta Historical Society, and many others. During his college years, Pat worked on trail crews and survey crews in Lassen Park, Yosemite Park, and Shasta-Trinity National Forest. He is a Vietnam Veteran, holds a M.A. in Economics from Washington State University, and is a fourth generation Shasta County resident. He and his wife Kathleen make their home in Cottonwood.



Randall Townsend

Randy Townsend has served on Lassen Park Foundation's Board of Directors since 2010. Randy, of Monrovia, CA., is the Director of Information Technology at Cal Poly Pomona Foundation. He grew up in the Siskiyou-Trinity Alps area where he developed a love of wilderness through his father, a forest service engineer, and grandfather, a gold prospector. Randy's interest in leadership, education, and advocating the outdoor experience is conveyed in his volunteer work chairing Camp Fire Boys and Girls in Redding, Botanical Gardens in southern California, and others. He has 40+ years of technology career experience in the forest products industry, banking, education, entertainment and visual arts. Randy met and married his wife, Karen Mitchell, at Drakesbad in Lassen Park, and continues to visit regularly to hike, fly fish and paint.



John Livernois

John Livernois has served on Lassen Park Foundation's Board of Directors since 2010 and is the Chief Financial Officer. John is a resident of Chico where he and his wife are the owners of Padgett Business Services specializing in accounting, tax and consulting services. He has extensive experience in the food, hospitality and recreational services industry. Upon moving to Chico to attend college he found Lassen Volcanic National Park to be a treasure and continues to enjoy all its wonders with his wife and two children.

Lassen Park Foundation is currently seeking new Board Members. If you have an interest in serving on our Board of Directors please contact our office at (530) 378-2600 or via e-mail at info@lassenparkfoundation.org.

THANK YOU!

DONORS

\$10,000+ Donors

- Volgenau Charitable Foundation
- Herbst Foundation, Inc.
- Art & Caroline Whitney

\$5,000+ Donors

- Steven & Karen Jahr
- Pete Dailey & Karen Rasmussen
- Eric & Lizabeth Forsberg
- Armrod Charitable Foundation
- Rotary Club of Redding
- Harrison Family Fund

\$3,000+ Donors

- Paul & Jael Mazur
- InterWest Insurance Services, LLC
- Tom & Pam Pitts
- David & Debby Trotter
- Sierra Pacific Foundation
- Steve & Nancy Williams
- John Koeberer
- Archer & Eve Pugh
- Tyler & Kristy Lanham
- The McConnell Foundation
- Maddie & Steve Hofferber
- Mitch & Terry Nilsen
- Jane Flynn
- DH Scott & Company
- Redding Rancheria
- Harry Daniell

\$1,500+ Donors

- Mr. Randy Townsend & Mrs. Karen Mitchell
- Emilyn Sheffield
- Pat & Kathie Carr
- Maire and Deedon, a Law Corporation
- Advantage Pharmaceuticals
- Hennessy Advisors, Inc
- Bob Andrews & Elizabeth Norton
- Bill & Janice Latham
- Jon & Stacy King
- Bob Ono & Betty Masuoka
- Jeffrey & Carolee Wagner
- Red Bluff Rotary Foundation
- Cliff & Sherrie Downard
- Alex Sifford
- John Sharrah & Ruth Pintar
- Ron & Nancy Piret
- Nathan Arendt
- Mark & Sally Chaney
- Padgett Business Services
- Robert & Lynne Klein
- Joe & Cathy Kneer
- Moule's Tehama County Glass
- Cornerstone Community Bank
- Highlands Ranch Resort
- Redding Bank of Commerce
- Morgan Stanley

Donor contributions noted above were received within the last year.



IN HONOR / IN MEMORY DONATIONS

In Honor:

- Mary Bedford
- USGS Geologist Mike Clynne
- Steve & Clare Gaston
- Scot & Jill Goodin's Baby
- Parker Manning Family
- Mr. & Mrs. Jim McCann
- The Rose Center Physical Therapy
- John Sharrah
- Jeffrey & Carolee Wagner

In Memory:

- Kathleen Jo "Bird" Bernadett
- Edwin Joseph Block
- Les Bodine
- Rawlins Coffman
- Chad Corona
- Arthur Feidler
- Lee Friedline II
- Kenneth Hinkle
- Alfred Kaznowski
- Howard & Sally Latimer
- Gayle L. Madden
- Carolyn Pelkan
- John F.H. Purcell
- Meg Quiggle
- Joseph Redman
- Nancy Rorty
- Donald & Dorothea Schultz
- Nancy Serr
- Saul Eli "Chick" Shapiro
- Bill Siemer
- Roy and Emily Sifford
- Daniel P. Thomas
- Charles Robert Vick
- Robert H. Weitbrecht

All those listed as "In Honor" or "In Memory" have been recognized within the last 24 months.



Preserving the Lassen area's unique beauty for generations to come

PO Box 33
Anderson, CA 96007

 www.instagram.com/lassenparkfoundation
[@LassenParkFoundation](https://www.instagram.com/LassenParkFoundation)

 www.youtube.com/LassenNPS

 www.facebook.com/LassenParkFoundation

 www.twitter.com/LassenParkFound

SUPPORT RESEARCH INITIATE CULTIVATE ACHIEVE **DONATE**

A contribution to the Lassen Park Foundation will be used towards supporting youth programs, enhanced interpretive and educational activities, trail restoration, wildlife research, park improvements and cultural resource development. Those who contribute to the Foundation support the Lassen Volcanic National Park and surrounding region, helping to preserve its unique beauty for generations to come, as well as enriching the experience of today's Lassen visitors.

Go to www.lassenparkfoundation.org or call us at **(530) 378-2600** to make a donation today. Or you can fill out the form below and mail to: PO Box 33, Anderson, CA 96007. **You make our Foundation possible!**

YES! I would like to help support the Lassen Park Foundation by making a donation.

Name: _____

Address: _____

City: _____ State: _____ Zip: _____

Phone: _____

Email: _____

Method of Payment:

Cash Check Visa Mastercard

Name: _____

CC#: _____

Exp Date: _____

Signature: _____