

# LASSEN NEWS

A PUBLICATION OF THE LASSEN PARK FOUNDATION

SUMMER 2006

## HIGHLIGHTS THIS ISSUE

### VISITOR CENTER CAMPAIGN

### FAREWELL TO MRS. ROY SIFFORD

### YOUTH PROGRAMS

### NEW DONOR LEVELS

### SUMMER PROGRAM SCHEDULE

*"National  
Parks are  
the best idea  
we ever had.  
Absolutely  
American,  
absolutely  
democratic,  
they reflect  
us at our  
best rather  
than our  
worst"*

*Wallace  
Stegner, 1983*



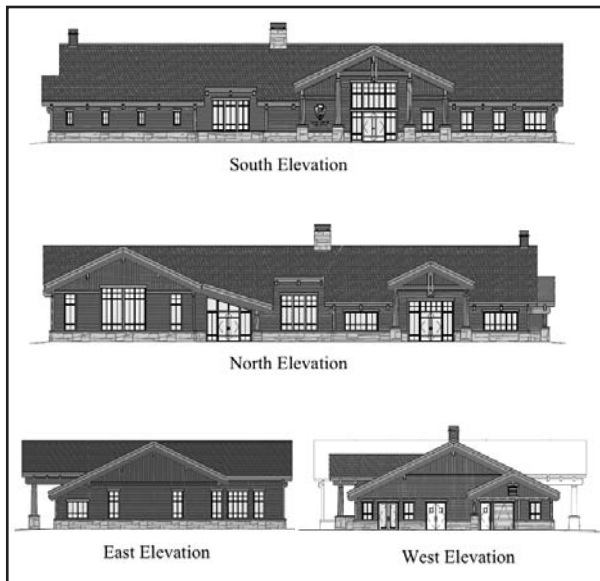
## VISITOR CENTER CAMPAIGN NEARING COMPLETION

The capital campaign for Kohm Yah-mah-nee, the visitor center for Lassen Volcanic National Park is nearing completion - only \$90,000 left to go to reach our goal of \$500,000 towards the \$8,000,000 project. If you haven't made a gift yet, there is still time - contributions of \$1000 and more will be recognized on the donor wall at the new center.

The center has a new schematic design and a contract is expected to be awarded this June. Once awarded, the contractor will work with National Park Service staff to complete the construction drawings and begin construction in April 2007. Construction will require two summer seasons and the anticipated grand opening is in October 2008.

Over 200 foundations, businesses, and individuals have made contributions to this important community project that will fulfill a long-felt need. Lassen Volcanic National Park will be enhanced by the increased visitor services that this center will provide at the Southwest entrance to the Park. The year-round center will increase visitation to the Park and enable visitors to get the most out of their time there.

The Lassen Park Foundation anticipates the end of the campaign this year which will allow us to move forward in our plans for support in other areas of need. Please help us complete the campaign.



## FAREWELL TO MRS. ROY D. SIFFORD



*Susan Watson with granddaughter Katie Murphy, Emily Sifford, and Billie Fiebiger, manager of Drakesbad Guest Ranch. 1992*

Many were saddened to hear that Emily Sifford had passed away on February 24<sup>th</sup> in San Francisco, where she had lived for many years. Mrs. Sifford's husband Roy and his family, had owned and operated the Drakesbad Guest Ranch from 1900 until an agreement was struck with the Park Service in 1953 to add their land to Lassen Volcanic National Park. Mrs. Sifford graduated from the University of California and Stanford University, and participated in the World War II Normandy invasion and 45<sup>th</sup> evacuation unit. She was elected an Honorary Director of the Lassen Park Foundation after her husband died in December 1991, succeeding in his position. Along with being a charming and gracious person, Emily Sifford was a strong supporter of the Foundation, as she felt that the organization was carrying on the Sifford family's love for the Park. She will be greatly missed.

## SIGNIFICANT YOUTH PROGRAMS HELP RAISE YOUNG STEWARDS

Research shows that if a young person has not hiked, camped or fished by age 16, they likely never will. The effect of being outdoors increases self-reliance and physical strength, self-confidence and respect for the world around us. This year the Lassen Park Foundation will sponsor five youth groups so that they can make camping a possibility for youth who come from disadvantaged backgrounds. Your contribution this year can make it possible for more young people to have this important experience. The Foundation also sponsored the Winter Snowshoe Program.



BECOME A FRIEND OF THE LASSEN PARK FOUNDATION  
CHECK OUT OUR WEBSITE: [WWW.LASSENPAKFOUNDATION.ORG](http://WWW.LASSENPAKFOUNDATION.ORG)  
YOU MAKE IT POSSIBLE - YOUR CONTRIBUTION IS SO APPRECIATED!

## FOUNDATION LAUNCHES NEW DONOR LEVELS

Our newsletter mailing list has grown to over 5000 addresses, forcing us to rethink how we get information to you. Help us direct your contributions towards projects not postage! This mailing is a shortened version of our newsletter so that we can let you know that it will be necessary to make a contribution to the Foundation in order to continue to receive the full newsletter in the Fall. Of course, you can always stay connected to us through our website. All the latest information is there. [www.lassenparkfoundation.org](http://www.lassenparkfoundation.org)

### Donor levels for the Lassen Park Foundation

#### Trail Scout..... \$35

Ensure that you continue to receive our newsletter and Lassen Volcanic National Park's twice-yearly newspaper

#### Climber..... \$50

All of the above  
Plus your choice of "Hiking Trails of Lassen", by George Perkins or a baseball cap with Lassen Park Foundation logo

#### Century Climber.....\$100

All of the above plus a blue polo shirt with Lassen Park Foundation logo

#### Summiteer.....\$500

Ensure the stewardship of Lassen Volcanic National Park and Lassen National Forest

#### Lassen Peak Partner.....\$1000

Become a partner in providing substantial projects in the Lassen region.

### You can also designate your gift to the following funds:

The **Lester Bodine Fund**, is a general fund which commemorates the life of Lassen Volcanic National Park's Chief Ranger.

The **Youth Projects Fund**, which creates opportunities for disadvantaged youth to have a camping trip in Lassen Volcanic National Park or Lassen National Forest.

The **Sifford Trails Fund**, commemorates the lives of Mr. and Mrs. Roy D. Sifford, and provides funding for trail maintenance and restoration.

The **Warner Valley Special Projects Fund**, which is used solely for projects in the Warner Valley.

**Kohm Yah-mah-nee**, the fund to assist the National Park Service in the creation of a true visitor center for Lassen Volcanic National Park.

The Lassen Park Foundation's **Endowment Fund** rests with the North Valley Community Foundation in Chico and is an opportunity for donors who wish to provide funds for the Foundation in perpetuity.

## VISIT LASSEN THIS SUMMER

The National Park Service invites you to enjoy the free programs offered this summer. We hope that learning about Lassen Volcanic and its resources brings a greater appreciation of your national park.

**Ranger Programs:** Programs listed below run **June 23 - August 19, 2006**. Check bulletin boards for program schedule from August 20 - September 3, 2006. All programs are 45 minutes long unless otherwise noted. Check bulletin boards for special programs

### SUNDAY

**STORIES IN STONE** - 3:00 p.m. Meet outside the Loomis Museum. Learn about the fascinating stories in stone that can be seen from the Manzanita Lake area.

**PREDATOR AND PREY** - 1:30 p.m. Meet outside the Loomis Museum. Come enjoy a talk about the amazing lifestyles of the park animals - both predator and prey.

### MONDAY

**TRAIL OF THE ATSUGEWI PEOPLE** - 9:30 a.m. Meet outside the Manzanita Lake Camper Store. Join a park ranger for a short walk to explore the summer life of the Atsugewi Indians at Manzanita Lake before the pioneer settlers arrived.

**BLOWN FROM A VOLCANO** - 10:30 a.m. Meet outside the Loomis Museum. Did you know that every mountain in the Park is a volcano or part of one? Come learn about the fascinating geology and volcanic history of the Park at this program.

**Cougar:** The American Mountain Lion - 1:30 p.m. Meet outside the Loomis Museum. Join a park ranger and discover little known secrets about the cougar and its lifestyle.

### TUESDAY

**TOOLS FROM THE PAST** - 10:00 a.m. Meet outside the Loomis Museum. Learn about rural life in the 1930's through a lively demonstration of tools from the past.

**FAULT TALK** - 1:30 p.m. Meet outside the Loomis Museum. A demonstration of how geologists monitor the Park's volcanic hazards and measure seismic activity.

### WEDNESDAY

**BEAR NECESSITIES** - 1:30 p.m. Meet outside the Loomis Museum. Come learn about black bears and how you can help keep them wild in Lassen Volcanic National Park.

### THURSDAY

**SCOTTS FIRE PROGRAM** - 10:30 a.m. Meet in the Loomis Museum Auditorium. We'll look at historic forest photos at precise locations and compare how those forests look today.

**WILDLIFE TRACKS AND TRAILS** - 2:00 p.m. Meet outside the Loomis Museum. Discover interesting stories and lifestyles of the Park's wildlife by the tracks and trails they make.

### FRIDAY

**ON THE WILD SIDE** - 2:00 p.m. Meet outside the Loomis Museum. Discover some of the "wilder sides" of the Park during this program. Topics vary from the natural to the cultural history of the Park.

**EVENING SLIDE PROGRAM** - 9:00 p.m. in June and July, 8:30p.m. in August. Meet at the Manzanita Lake Amphitheater. Join a ranger for an slide program about the Park's natural or cultural history.

### SATURDAY

**EARLY BIRDS** - 8:00 a.m. Meet outside the Manzanita Lake Camper Store. Take an easy walk and discover the birds of Manzanita Lake.

**PEAK TALK** - 9:30a.m. and 11:00 a.m. Meet at the Lassen Peak parking area trailhead. From the base of Lassen Peak, learn about its unique geology and the devastating eruption of 1915. Tips for a safe and enjoyable hike up Lassen Peak will also be highlighted.

**SKINS AND BONES** - 1:00 p.m. Meet outside the Loomis Museum. Examine the skins and skulls of park animals and hear stories of their amazing lifestyles in this program.

**FAULT TALK** - 2:30 p.m. Meet outside the Loomis Museum. A demonstration of how geologists monitor the Park's volcanic hazards and measure seismic activity.

**EVENING SLIDE PROGRAM** - 9:00 p.m. in June and July, 8:30p.m. in August. Meet at the Manzanita Lake Amphitheater. Join a ranger for an slide program about the Park's natural or cultural history.

### Junior Ranger and Firefighter Programs:

Programs run June 23 - August 19, 2006

#### JUNIOR RANGER - 9:30 A.M. SATURDAY, SUNDAY, AND WEDNESDAY

If you are 7 to 12 years old, join this fun adventure and learn about the Park through games, activities, and observations. Become a Junior Ranger. Meet at the Manzanita Lake Amphitheater. Two hours.

#### JUNIOR FIREFIGHTERS - 11:30 A.M. THURSDAY

If you are 7 to 12 years old, join in on an exciting program and discover the role of wildfires in our national parks. Become a Junior Firefighter. Meet outside the Loomis Museum. 45 minutes Lassen Volcanic National Park Peak Experiences