

LASSEN

# NEWS

Discover Lassen  
August 10th & 11th

Volcano Adventure Camp  
Draws Bay Area Youth

Peak Experience  
Dinner & Auction  
September 21st

Adventuring in Warner Valley | Loomis Museum Project

SUMMER 2019



Photo Courtesy of Eagles Soar Youth Activities Center



# DISCOVER LASSEN



Your Local National Park

## DISCOVER LASSEN - AUGUST 10<sup>TH</sup> & 11<sup>TH</sup>

Lassen Volcanic National Park will host two days of exhibits, demonstrations, hikes and park discovery at Discover Lassen, Aug. 10 - 11. This family-friendly event introduces first-time visitors and park regulars to many of the features of the north state's national park.

On Saturday (Aug. 10), Loomis Plaza near Manzanita Lake at the north end of the park will feature a fair with exhibits and demonstrations by the Lassen Volcanic NP staff. Lunch and beverages will be available for purchase.

On Sunday (Aug. 11), a Hike-A-Thon will start from the Kohm Yah-mah-nee Visitor Center near the park's southwest entrance, from 8 a.m. to 4 p.m. Registrants receive a t-shirt, and earn a commemorative patch for each of the trails they complete.

Last summer, smoke from the Carr Fire and other north state blazes inhibited visitor attendance at Lassen Volcanic, even though the air quality at Manzanita Lake was often clear. The park staff and the Lassen Park Foundation (LPF) see Discover Lassen as an opportunity to reintroduce the national park to north state residents who may be unaware of the park's beauty and that it is an easy, same-day trip throughout most of Upstate California.

The charitable event, organized by LPF with the assistance of Under the Sun Events, benefits the philanthropic work of the Foundation, including helping to underwrite the park's Volcano Adventure Camp and Youth Camping Programs that provide camping trips for over 1,000 underserved children each summer. Cost to participate is \$50/adult, \$20/youth and free under 12.

"Because participants will be hiking five miles to the 10,462' summit of Lassen Peak, then back down along the Lassen Peak Trail, we're not calling it a race. The trail is rated from moderate to strenuous, so we're encouraging participants to hike at a comfortable pace, carry lots of water and take the time to enjoy the spectacular views of the national park, Sacramento River Valley, and Mt. Shasta," she continued.

Proceeds from Discover Lassen benefit the philanthropic work of the LPF inside Lassen Volcanic National Park, including improving trails and visitor experiences, providing camping in the park for underprivileged youth and conducting supplementary scientific research and wildlife protection.



More about the event can be found at [DiscoverLassen.com](http://DiscoverLassen.com)

## MESSAGE FROM THE CHAIR

I'm honored to serve as the new Chairman of the Board for the Lassen Park Foundation, recognizing that I have big shoes to fill. I am deeply grateful to John Koeberer for the outstanding work he has done to create and run this organization for 35 years, and to the outstanding group of people that John brought on this journey. My personal mission is to serve the stake-holders: board members past and present, donors, National Park Service staff and visitors to Lassen Park; and to nurture and cultivate the legacy of the Foundation for years to come.

My family has lived in the shadow of Mt. Lassen since they arrived in California, settling in Tehama in the mid 1800's. I learned to fly fish Battle Creek and Mill Creek, and to ski on the Poma Lift in the 1970s. I learned to cut fire wood, and to split fence rails and posts in the surrounding woods. These were traditions handed down to me from my parents and to them from their parents. I am dedicated to conserving the treasures of Lassen for the next generation. That is why the mission of the Lassen Park Foundation is so near and dear to my heart.

The work the Foundation has done for example to build the Kohm Yah-mah-nee Visitor Center, or to rehabilitate the trail to the Peak will pay lasting dividends. Perhaps most importantly, the work the Foundation has done to build the Volcano Adventure Camp, and the scholarships we provide to youth groups bringing youngsters in who might not otherwise have an opportunity enjoy the Park, gives me hope that together we are stimulating the next generation of stewards for the treasures of Lassen.

Sincerely,

Pete Dailey, Chairman  
Lassen Park Foundation





Photo Courtesy of Boy Scout Troop 17

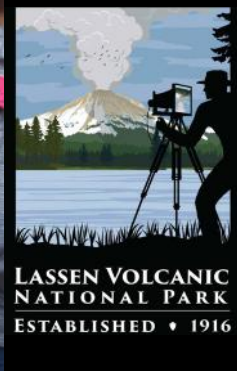


Photo Courtesy of the Sierra Club

# LASSEN VOLCANIC NATIONAL PARK 2019

[www.nps.gov/lavo/planyourvisit/special-events.htm](http://www.nps.gov/lavo/planyourvisit/special-events.htm)

## JULY EVENTS

**Photography Field Workshop**  
July 26 -27 @ Manzanita Lake  
[go.nps.gov/lavo/seminar](http://go.nps.gov/lavo/seminar)

## AUGUST EVENTS

**Dark Sky Festival**  
August 2 & 3, All Day Event  
[go.nps.gov/darksky](http://go.nps.gov/darksky)

## SEPTEMBER EVENTS

**Art, Wine & Beer of Lassen**  
September 7, 11am - 5pm  
Kohm Yah-mah-nee Visitor Center

**Public Lands Day**  
September 28, Park Wide!  
Volunteers receive free admission

**Discover Lassen**  
August 10th & 11th  
This newly re-named event is a combination of two events fka Day in the Park & Reach the Peak Hike-A-Thon.  
Details at [DiscoverLassen.com](http://DiscoverLassen.com)

**Peak Experience Auction**  
September 21, 5:30pm - 10pm  
McConnell Foundation, Redding  
[LassenParkFoundation.org](http://LassenParkFoundation.org)

## VOLCANO ADVENTURE CAMP DRAWS BAY AREA YOUTH

By Robert Ono, LPF Board Member



The Volcano Adventure Camp was built in 2016 through a partnership between Lassen Volcanic National Park (LVNP) and the Lassen Park Foundation. This youth camping facility provides an opportunity for outdoor learning and environmental education from National Park staff.

This summer, the Lassen Park Foundation provided financial grants to over 1,100 young campers from 58 non-profit groups to camp at LVNP. Many of the youth groups are new to the Foundation's camping program and will be first-time visitors to the Volcano Adventure Camp this summer.

Financial contributions to the Lassen Park Foundation from readers like you helped to raise almost \$53,000 to use towards 2019 youth camping grants.

One of the new grant recipients this year is

Today's Youth Matters (TYM), a non-profit that serves at-risk youth from Richmand and Oakland, California. TYM's vision is to guide elementary children and high school teens from challenging environments to improve the trajectory of their lives.

The group was assisted in preparing its grant application and program participation by Trevor Tonge, a member of a Mountain View, California, Boy Scout Troop. Trevor is a young man working towards achieving his Eagle Scout rank. Becoming an Eagle Scout requires a candidate to complete a project that demonstrates both personal leadership and benefits the community. Trevor chose to work with TYM and the Lassen Park Foundation grant program as a personally fulfilling endeavor.

Trevor has a special appreciation for Lassen. He hiked 50 miles in LVNP during a 2017 summer scouting backpacking trip, trekking over park trails to sparkling lakes and Cinder Cone. He realized the trip was one of the best experiences in his Scouting career and wanted to help others have a similar national park experience. Moreover, he was excited to visit the Volcano Adventure Camp for the first time so that he could later encourage other groups to take advantage of this unique camping program.

The Foundation approved TYM's grant application as the mission of both

organizations include helping at-risk youth succeed in life. As Trevor told us, "...the teens we are bringing up to Lassen will learn useful leadership skills that will empower them to take charge in their communities so that their minds and hearts can experience positive change. By taking them to an unfamiliar environment and creating unique memories, the lessons they will learn will not be easily forgotten. The Volcano Adventure Camp is the ideal place to introduce teens to the wonders of our national parks while still experiencing comfort that will keep the trip positive."

The Lassen Park Foundation is working on plans for the second and final construction phase of the Volcano Adventure Camp. This phase will add four tent cabins, four fire pits and a fourth vault toilet to the camp to allow even more youth groups to utilize the facility.

If you would like to help the Lassen Park Foundation serve more at-risk youth, please make a donation online at [www.LassenParkFoundation.org](http://www.LassenParkFoundation.org), or call us at (530) 378-2600 and let us know how you can help. Financial contributions to the Foundation for camp construction and tent furnishings are tax deductible.

We hope you can join us in bringing more youth to your favorite national park and help them expand their life skills and knowledge.

# LOOMIS MUSEUM'S HISTORY & FUTURE

By Amanda Sweeney, Lassen Volcanic National Park, NPS

This summer marks the beginning of a multi-year project to replace exhibits inside the Loomis Museum. Visitor entrance fees will fund contracting for exhibit design beginning next year and fabrication beginning in 2021 or 2022.

Planning efforts are now underway to identify park priorities, stakeholder preferences, and visitor interests. Lassen Park Foundation is one of a handful of education, science, and tribal partners providing input on project goals and objectives.

The new exhibits will continue to support the building's orientation and information functions, incorporate relevant and engaging interpretation elements, and restore aspects of the museum's historic character.

Built in 1927 by Benjamin F. Loomis, the museum is a monument to his passion for the park and his role in its establishment. Loomis' stunning



photographs of the 1914-1915 Lassen Peak eruptions helped bring the proposed national park into the spotlight.

Loomis and his wife Estella felt it was their duty to build a museum for the preservation of his photograph collection. On February 4, 1929, Benjamin and Estella Loomis signed the deed granting their 40-acre tract together with their museum and seismograph building as a gift to the park.

The rectangular building, built of native stone and reinforced concrete, originally featured a single large room. Loomis filled the interior with some 200 photographs mounted from floor to ceiling, dozens of geologic specimens arrayed in glass cases, and assorted biological specimens sealed in glass jars. Shortly after its construction, the addition of an arch in the back wall created a new rear wing that featured mounted animal displays with background pictures taken by Benjamin and tinted by Estella.

Interpretation in the park began with the Loomises and their museum. On busy summer days, the retired couple took turns greeting visitors in their adjacent art studio (now the Loomis Ranger Station) or in the museum, where they sometimes gave lectures based on the photograph collection.

In the ninety years since its construction, the Loomis Museum interior has seen numerous modifications. The park retained variations of the gallery format through the 1940s. In the 1950s, the interior underwent a dramatic renovation. Two rows of modern exhibit cases atop checkered linoleum tile filled the main room and the back room became a combination auditorium and exhibit room.



Photos Courtesy of the National Park Service

In 1974, the park closed the museum along with the Manzanita Lake Lodge Resort, Reflection Lake Picnic Area, Summertown, and Manzanita Lake Campground due to concern over a potential geologic hazard from nearby Chaos Crags. Ironically, the museum and its adjacent seismograph station were added to the National Register of Historic Places in 1975.



Fortunately, the museum escaped demolition. However, 17 years of vacancy left the building and its interior in dire need of renovation. The park invested heavily in both the museum and the education center with new roofing, asbestos removal, new furnaces, skylight and window replacements, underground power lines, and sewer improvements.

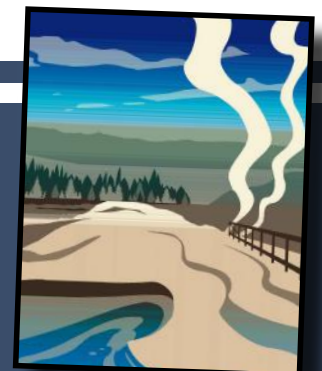
The Loomis Museum was reopened for ten days in August 1991 as part of Lassen Volcanic's 75th anniversary celebration. Some 4,000 people stopped by the partially renovated building to view a refurbished collection of Loomis photographs, newly rematted and framed by the Lassen Loomis Museum Association.

In 1992, the Lassen Park Foundation secured a grant from the McConnell Foundation of Redding to finish the restoration of the museum's interior. This money was used for plaster work, painting, carpet, lighting, and auditorium chairs. Another grant, from the Murdy Foundation of Santa Ana, bought the museum a USGS touchscreen computer that enabled visitors to view live seismic activity around the state.

Today, the museum welcomes more than 50,000 visitors each summer (Memorial Day weekend through October). The current exhibits, installed in 1999, focus heavily on Loomis, Atswegui basketry, and volcanology.

The exhibit replacement project aims to embrace the long history of the museum and the surrounding historic district. This project coincides with the larger Manzanita Lake Area Site Plan development process, which will address improvements to trails, roads, and other infrastructure in the area.

The history of Loomis and his museum are one part of the larger story shared at this iconic facility. The park looks forward to applying both new and classical approaches to orientation and interpretation in the new exhibit designs. With the help of stakeholders like Lassen Park Foundation and input from museum visitors, the project will result in exhibits that both capture the spirit of the building and area and engage a wide variety of park visitors.



## "BUMPASS HELL" PENDLETON BLANKETS

If you would like to order your "Bumpass Hell" Limited Edition Pendleton blanket please visit our website at [www.lassenparkfoundation.org](http://www.lassenparkfoundation.org) and go to the "SHOP" page. The blankets retail for \$250 and can be shipped for \$17.95 or picked up for no additional cost at our office located in Anderson, Ca.

# PEAK EXPERIENCE DINNER & AUCTION - SEPTEMBER 21<sup>ST</sup>

Peak Experience is Lassen Park Foundation's (LPF) annual dinner/auction gala. Each year in September we gather at the beautiful McConnell Foundation in Redding to celebrate our successes from the summer and look toward the next year. Attendees enjoy a delicious dinner and the opportunity to help support LPF's work by bidding on live and silent auction items. We welcome all supporters of Lassen Park Foundation to attend this year's Peak Experience on Saturday, September 21st.

LPF was established in 1984, and in 2019 we're thrilled to celebrate our 35th anniversary with our Peak Experience guests! 1984 was an exciting time filled with bright colors, daring outfits, and brave changes. Not the least of which was the creation of our Foundation by a group of courageous park supporters who dreamed of a new visitor center at Lassen. They endeavored for a full decade until their dream was made a reality through the completion of Lassen Crossroads.



LPF continues that tenacious mindset and focus on success today with our latest capital project, the Volcano Adventure Camp, and our ongoing efforts to introduce the next generation of park stewards to our favorite national park through our Youth Camping Program. We look forward to remembering our successes and celebrating our future with you on September 21st!

## ADVENTURING IN WARNER VALLEY

BY DAVE SHAKES, LPF BOARD MEMBER

On our way up to Lassen Volcanic National Park's (LVNP) Warner Valley, the high-country surrounding Lassen Peak glistened with a sugar-coating of snow. It was day two of our vacation and we now felt reasonably acclimated to the 5,600' elevation and ready for our favorite hike: up the Flatiron Ridge Trail to Sifford Lakes. There was some thought that snow might halt us on the way up to the lakes at 7,100'. Still, it was the first day of summer. How bad could it be?

There was a moment when we nearly turned back instead of forging through the two- and three-foot snow mounds, but we arrived safely at Sifford Lakes 1 and 2. Four to eight inches of ice brimmed the lakes' edges. The bright sun shone, creating a blue luminescence in the icy water. But for the wind in the trees and a fly buzzing by, all was so quiet. Here are some travel tips from me to you when planning to explore Warner Valley this summer.

Sifford Lakes is a beautiful all-day hike. Hikers love the Mt. Harkness trail for its killer views and the fun of seeing the fire lookout station up close. Both are accessible from the Warner Valley Trailhead along with several wonderful day hikes.

**"Put Warner Valley on your bucket list. It's a remarkable spot!"**

When you drive to the Warner Valley Trailhead from Highway 36 in Chester you might stop first at the Pine Shack Frosty. The sign outside proclaims "Your Order Free if Mt Lassen Erupts". Now that's a deal! From Highway 36 take a left on Warner Valley Road. You'll drive 14 miles of paved road until you hit the last three miles: dirt and gravel. That last piece of road can be unnerving but don't sweat. After

you pass the southern entrance ranger station and pay your entrance fee, you arrive at the Warner Valley Trail Head.

Warner Valley Trailhead features a parking area, clean vault toilets, and spots nearby for your picnic blanket. Across the way is the Warner Valley Campground with 17 tent sites. For the first time in 2019, reservations can now be made for a portion of the sites via [LassenLodging.com](http://LassenLodging.com).

The trailhead is roughly the half-way point of the famous Pacific Crest Trail (PCT). PCT hikers who started in spring at the border have hiked 1,353 miles when you meet them in Warner Valley. They are wonderful humans, and happy to tell stories of their adventure when you share a cold one from your cooler.

From the trailhead, Boiling Springs Lake is an easy introduction and



Photo Courtesy of David Shakes

gentle upslope walk. You'll circle a steaming lake with a few gurgling mud pots, and a wonderful view of Mt Lassen. Along the way you'll step over a couple tiny streams. In the cool of a morning, they might appear to be steaming. They are! These are the hot springs that feed the swimming pool you see below as you gaze at Drakesbad Guest Ranch, a national historic treasure.

Adjacent to Drakesbad is the Meadow. This is no ordinary meadow... this is a 90-acre Fen. Under the grass lies a two foot accumulation of organic material growing slowly since 2000 BC. Isn't it remarkable within the vicinity of so much volcanic activity that this little slice of grasses, wildflowers, and animals has remained untouched?

There are signs here for another short simple walk: Dream Lake or Dream Meadow. Not long ago it was known as Dream Lake. However, after the man-made dam began to erode a difficult decision was made to return the lake to its original condition as a small meadow. Today Dream Meadow features a meandering stream with tall grasses for nesting birds, frogs, crickets, and evening bats.

Walk further ahead in the meadow to reach the trailheads for Devils Kitchen and Drake Lake which are half-day hikes best enjoyed with a sack lunch. Devils Kitchen is an easy gentle hike. It's smaller than Bumpass Hell, but very satisfying. It has steaming fumaroles and mud pots, and you'll catch a whiff of that Sulphur smell that causes kids to say "ewwh!" Drake Lake is a tougher climb. The switchback is no joke. But this sweet lake is nice for a dip.

We highly recommend you put Warner Valley on your bucket list for your next trip to Lassen Volcanic National Park. It's a remarkable spot!



# MEET OUR NEW BOARD MEMBERS

View our full list of Board Members online at [LassenParkFoundation.org](http://LassenParkFoundation.org)

## BOARD OF DIRECTORS

- Chairman*.....Pete Dailey
- Vice-Chair, IT*..... Robert Ono
- Vice-Chair, Youth & Projects*..... Bob Warren
- Vice-Chair, Grants* .....Elizabeth Norton
- Chief Financial Officer*.....John Livernois
- Corporate Secretary*..... Benjamin Webster
- Chair, Communications* .....Deborah Trotter
- Executive Officer* .....Patrick W. Carr
- Executive Officer* ..... Steve Williams
- Executive Officer* .....Steven Jahr
- Executive Officer* ..... Art Whitney

- Zach Brunner, Honorary
- Michael Coogan
- Paul Coots
- Harry W. Daniell, MD
- Jeff Finck
- Lizabeth Forsberg
- Casey Freeland
- John Koeberer
- Kacey Koeberer
- William Latham
- Wayne Maire
- George Perkins
- Nancy Piret
- Pam Pitts
- John Roth
- Dave Scott
- David Shakes
- John Sharrah
- Emilyn Sheffield
- Robert Simpson
- Randall L. Townsend
- David Trotter
- Jim Weber
- Art Whitney
- Kenny Wilsey
- Laura Young, Event Chair
- Steven Zarwell

## AGENCY LIAISONS

- Superintendent Lassen Volcanic National Park*.....Jim Richardson
- Chief of Interpretation & Education Lassen Volcanic National Park*..... Kevin Sweeney

## STAFF

- Executive Director* .....Jennifer R. Finnegan
- Assistant Director*..... Marissa Young



### Paul Coots

Paul Coots joined the Lassen Park Foundation's Board of Directors this June (2019). Paul is a native Californian, raised in Long Beach area through college. He believes his lifelong appreciation and affection for the outdoors developed from summer camping trips with his family. He and his wife, Kathy, have visited Lassen Volcanic National Park since the 80s—no matter the season. Cross-country skiing, day hikes, backpacking, camping, fishing and biking have always topped the list of their great outdoor experiences. They spent a lot of time in the park with their children and now grandchildren. As retired educators, the couple considers outdoor educational experiences to be essential to all kids. Paul is interested in promoting the Park's treasures to others and impressing the importance of preserving our parks for future generations.



### Casey Freeland

Casey Freeland joined the Lassen Park Foundation's Board of Directors this June (2019). Casey is a lifelong Shasta County native, growing up in Burney and living in Redding for the past 32 years with his wife and four children. In addition to banking, he moonlights as a disc jockey for KShasta 104.3, is an amateur novelist, loves/hates the game of golf and can often be found cycling across the North State's beautiful countryside.



### David Trotter

Dave Trotter is happy to be back with the Lassen Park Foundation after serving on the Board from 1991 to 2008. During that time Dave was actively involved as chair of the Major Projects Committee in the fundraising efforts for the Kohm Yah-mah-nee Visitor Center. Dave and his wife Deborah Trotter (also an LPF board member) have lived and raised their family in Moraga since 1988.

Dave is a director of the Murdy Foundation, a nonprofits charity started by Dave's grandparents. He has also served on numerous nonprofit and foundations including Save Mount Diablo, Goodwill Industries of the Greater East Bay, the Moraga Community Foundation, and the Moraga Historical Society. Dave served three terms on the Moraga Town Council, including three years as the Mayor of Moraga.

**Lassen Park Foundation is currently seeking new Board Members.** If you have an interest in serving on our Board of Directors please contact our office at (530) 378-2600 or via e-mail at [info@lassenparkfoundation.org](mailto:info@lassenparkfoundation.org).



## IN HONOR / IN MEMORY DONATIONS

### In Honor:

- Steve & Clare Gaston
- Baby Goodin
- Parker Manning Family
- Mr. & Mrs. Jim McCann
- John Sharrah
- The Rose Center Physical Therapy
- Jeffrey & Carolee Wagner

### In Memory:

- Kathleen Jo Bernadett
- Edwin Joseph Block
- Les Bodine
- Rawlins Coffman
- Chad Corona
- Arthur Feidler
- Lee Friedline II
- Alfred Kaznowski
- Howard & Sally Latimer
- Gayle L. Madden
- Carolyn Pelkan
- John F.H. Purcell
- Meg Quiggle
- Nancy Rorty
- Donald & Dorothea Schultz
- Nancy Serr
- Saul Eli "Chick" Shapiro
- Bill Siemer
- Roy and Emily Sifford
- Daniel P. Thomas
- Charles Robert Vick
- Susie Watson
- Robert H. Weitbrecht

All those listed as "In Honor" or "In Memory" have been recognized within the last 24 months.

## DONORS

### \$10,000+ Donors

- Volgenau Charitable Foundation

### \$5,000+ Donors

- Shasta Regional Community Foundation
- Pacific West Pharmacy, Inc.
- Steven & Karen Jahr
- InterWest Insurance Services, LLC
- Harry Daniell
- Redding Rancheria
- Art & Caroline Whitney
- Lizabeth & Eric Forsberg
- Harrison Family Fund
- Rotary Club of Redding

### \$3,000+ Donors

- Steve & Nancy Williams
- Advantage Pharmaceuticals
- Herbst Foundation, Inc.
- Dr. & Mrs. Paul & Jael Mazur
- Merchants Bank of Commerce
- Basecamp Hospitality
- Karen Rasmussen & Pete Dailey
- Archer & Eve Pugh
- Tyler & Kristy Lanham
- Maddie & Steve Hofferber
- Mitch & Terry Nilsen
- Jane Flynn

### \$1,500+ Donors

- Brian & Elizabeth Trayford
- Emilyn Sheffield
- Bob Andrews & Elizabeth Norton
- Tom & Pam Pitts
- CR Gibbs
- Bill & Janice Latham
- Jon & Stacy King
- Mrs. Karen Mitchell & Mr. Randy Townsend
- Cliff & Sherrie Downard
- Red Bluff Rotary Foundation
- The Murdy Foundation
- John Livernois
- Nathan Arendt
- Mark & Sally Chaney
- Bob & Betty Ono
- Joe & Cathy Kneer
- Anderson Rotary
- Suzanne Birch
- Pat & Kathie Carr
- Creative Composition
- DH Scott & Company
- Morgan Stanley
- Moule's Tehama County Glass
- Results Radio

Donor contributions noted above were received within the last year.





*Preserving the Lassen area's unique beauty for generations to come*

PO Box 33  
Anderson, CA 96007

 [www.instagram.com/lassenparkfoundation](http://www.instagram.com/lassenparkfoundation)  
[@LassenParkFoundation](https://www.instagram.com/@LassenParkFoundation)

 [www.youtube.com/LassenNPS](http://www.youtube.com/LassenNPS)

 [www.facebook.com/LassenParkFoundation](http://www.facebook.com/LassenParkFoundation)

 [www.twitter.com/LassenParkFound](http://www.twitter.com/LassenParkFound)

# SUPPORT RESEARCH INITIATE CULTIVATE ACHIEVE DONATE

A contribution to the Lassen Park Foundation will be used towards supporting youth programs, enhanced interpretive and educational activities, trail restoration, wildlife research, park improvements and cultural resource development. Those who contribute to the Foundation support the Lassen Volcanic National Park and surrounding region, helping to preserve its unique beauty for generations to come, as well as enriching the experience of today's Lassen visitors.

Go to [www.lassenparkfoundation.org](http://www.lassenparkfoundation.org) or call us at **(530) 378-2600** to make a donation today. Or you can fill out the form below and mail to: PO Box 33, Anderson, CA 96007. **You make our Foundation possible!**

**YES!** I would like to help support the Lassen Park Foundation by making a donation.

Name: \_\_\_\_\_

Address: \_\_\_\_\_

City: \_\_\_\_\_ State: \_\_\_\_\_ Zip: \_\_\_\_\_

Phone: \_\_\_\_\_

Email: \_\_\_\_\_

**Method of Payment:**

Cash  Check  Visa  Mastercard

Name: \_\_\_\_\_

CC#: \_\_\_\_\_

Exp Date: \_\_\_\_\_

Signature: \_\_\_\_\_