



# Peak Experiences

The official newspaper  
of Lassen Volcanic National Park

June - October 2005

## Kohm Yah-mah-nee Visitor Facility Underway

Over the years, all who love Lassen Volcanic National Park have wanted to see a permanent visitor facility built, and finally the time has come. Construction of the Kohm Yah-mah-nee Visitor Facility has begun.



Kohm Yah-mah-nee is the Mountain Maidu name for Lassen Peak (meaning "Snowy Mountain"). The new visitor facility, located at the southwest entrance, will replace the Lassen Chalet and provide year-round services including visitor orientation and education, concession food services, gift shop, association bookstore, ranger station, and snow removal equipment storage. The facility is scheduled to be open to the public in the spring of 2007.

The Kohm Yah-mah-nee Visitor Facility will feature:

- Interpretive and educational exhibits
- Auditorium showing park films
- Information desk with wilderness permits, maps, and educational information
- Book, map, and educational products for sale
- Concession operated gift shop and restaurant
- Public restrooms and drinking fountains
- First aid services

During the summer and fall of 2005 and 2006 construction will be in full swing. The new visitor facility, ranger station, and equipment storage area will better meet the needs of visitors, visitor safety, and resource protection. Funding is from a Line Item Construction Fund approved by Congress and the project will cost 10.4 million dollars. An additional \$500,000 will be raised by the Lassen Park Foundation. Their generous donation will fund a portion of the exhibit planning, production of a new park film, and exhibits that will be incorporated into the building landscape. A parallel project will be the construction of a new southwest entrance station, accomplished by using Fee Demonstration dollars.

For overall visitor safety and work efficiency, the entire construction area will be closed to all visitors. This includes the Southwest Campground and

the Mill Creek Falls trailhead. All other trails and park campgrounds will be open as scheduled, weather permitting.

You may encounter traffic delays and disruptions in services at the park's southwest entrance. To minimize the inconvenience, consider accessing the park road earlier in the morning or from the Manzanita Lake entrance, from Highway 44.

The interim southwest concession operations "Peak Necessities," will be located in the Lassen Peak parking lot during the summers of 2005 and 2006. These concession operations will provide limited food and gift items and will be open to the public June 18 through September 30. The Loomis Museum and Manzanita Lake Camper Service Store located near the Manzanita Lake entrance will be open during the summer and early fall.

Although the project and its construction will cause some temporary inconveniences, it will result in vast benefits for our visitors. We hope you will return to Lassen Volcanic National Park to enjoy these new facilities. Updated information about the construction and interim park operations is available on our website at [www.nps.gov/lavo/sw\\_facility\\_overview.htm](http://www.nps.gov/lavo/sw_facility_overview.htm).

### Welcome!

Summer is normally a wonderfully busy time for Lassen Volcanic National Park and this summer will prove to be even more exciting. As you read in the feature article of this issue of Peak Experiences we are beginning the construction of the new Kohm Yah-mah-nee Visitor Facility after many years of planning! This long-awaited project will for the first time provide visitors with a year-round facility to gather information and learn about the park through exhibits and a new film, purchase books, maps, gifts, or stop in at the dining area for a quick meal. This new facility will eventually enhance your visit to the park whether you visit summer, spring, fall, or winter.

The User Fee Program is an important support to the park which allows 80% of the entrance and camping fees collected to be used for visitor facility improvements and resource protection. The new Southwest Entrance Station will be constructed at the same time as the new visitor services facility. You will also find new wayside exhibits throughout the park that user fees made possible.

During the next two years of construction the southwest entrance of the park will have closures to specific areas and delays in that section of the Park Road. We apologize for any inconvenience you may encounter during this period of construction and hope you will find the project worth the added challenges visitors and park staff may experience during this timeframe.

We hope your visit is enjoyable and you plan to return again and again. Please remember your role to protect and preserve this special place for everyone.

  
Marilyn H. Parris  
Superintendent

### Look Inside:

Contact Information.....	2
Park Partners.....	2
You Need To Know.....	3
Ranger-Led Activities.....	3
Camping/Climate Data.....	4
Into The Wilderness.....	5
Nearby Businesses.....	6-7
Area Map.....	8



This summer's park newspaper was made possible by a donation from the Lassen Loomis Museum Association. [www.lassenloomis.info](http://www.lassenloomis.info)



National Park Service  
U. S. Department  
of the Interior



Established first as Cinder Cone and Lassen Peak National Monuments in 1907, Lassen Volcanic became a national park in 1916 because of its significance as an active volcanic landscape. Lassen Peak began erupting in 1914, had its most spectacular activity in 1915, and had minor activity until 1921. All four types of volcanoes in the world plus active geothermal areas are found in Lassen Volcanic's 106,000 acres. Lassen Peak may be the largest plug dome volcano in the world. It is considered to be active today.

**CONTACT INFORMATION**

**EMERGENCIES**  
Dial 911

**INFORMATION**  
**Park Headquarters (year-round)**  
(530) 595-4444  
Text Telephone for the Deaf (TTY)  
(530) 595-3480

**Loomis Museum (Summer only)**  
(530) 595-4444 ext. 5180

**FAX NUMBER**  
(530) 595-3262

**PARK WEBSITE**  
www.nps.gov/lavo/

**MAILING ADDRESS**  
Lassen Volcanic National Park  
P. O. Box 100  
Mineral, CA 96063-0100

**RESERVATIONS**  
**for Juniper Lake Group Sites & All Corrals**  
Lassen Volcanic NP Fee Office  
(530) 335-7029  
**for Manzanita Lake, Summit Lake, Butte Lake Campgrounds and Butte Lake & Lost Creek Group Sites**  
www.ReserveUSA.com  
(877) 444-6777

The National Park Service cares for the special places saved by the American people so that all may experience our heritage.

**Come Celebrate!**  
**Day in the Park**  
**Family Fun Festival**  
**August 6, 2005**

This summer's Day in the Park event highlights the park and its partners.

There will be fun, food, special programs, exhibits, and more!

Come enjoy the festivities. Entrance to the Park for August 6 is free.



# Visitor Services & Information

## Entrance Fees

PASS TYPE	PRICE	NOTES
<b>Vehicle</b>	\$10	Valid for 7 days
<b>Individual</b>	\$5	On foot, bicycle, motorcycle, or horse Valid for 7 days
<b>Lassen Volcanic Annual Pass</b>	\$25	Covers entrance fee at Lassen Volcanic & day use fee at Whiskeytown NRA Valid for one year from month of purchase
<b>National Parks Pass</b> <small>365 days - more than 380 ways to experience your America!</small>	\$50	Covers all national parks with entrance fees (Not valid for camping, tours, or concession charges) Valid for one year from month of purchase
<b>Golden Eagle Pass</b>	\$65	Covers fees at all Federal Fee Areas Available as a National Parks Pass with \$15 upgrade hologram sticker Valid for one year from month of purchase
<b>Golden Age Pass</b>	\$10	For U. S. citizens & permanent residents who are 62 years or older; proof of age required (driver's licence, etc.) Lifetime pass
<b>Golden Access Pass</b>	Free	For permanently disabled U. S. citizens & permanent residents; proof of disability required (VA letter, etc.) Lifetime pass

Nonprofit organizations pay \$5 for every person over 16 years old (minimum fee of \$10). Commercial fees are based on seating capacity. For more information, contact the Fee Office at (530) 595-4444 extension 5184.

## Park Partners

Lassen Volcanic National Park is fortunate to have two organizations which support the park by raising funds for programs and projects that enhance visitor services, protect critical resources, and add to our knowledge of the Park's history and natural processes.

**Lassen Park Foundation**, a nonprofit foundation, was founded in 1984 for the purpose of providing support for projects in Lassen Volcanic National Park and Lassen National Forest.



Authorized by the National Park Service and working in cooperation with the U. S. Forest Service, the Foundation is able to assist with needs such as enhanced interpretive and educational activities, trail restoration, wildlife research, and cultural resource projects. Currently the Lassen Park Foundation is raising funds to support the exhibit portion of Lassen Volcanic National Park's new Southwest Visitor Services Facility.

- Enclosed is my donation in the amount of \$ \_\_\_\_\_
- Please send me more information about the Foundation

Name \_\_\_\_\_  
Address \_\_\_\_\_

Mail to Lassen Park Foundation, P.O. Box 3155, Chico, CA 95927-3155, or telephone (530) 898-9309. Donations are tax deductible; please make checks payable to the **Lassen Park Foundation**.

You can visit us at [www.lassenparkfoundation.org](http://www.lassenparkfoundation.org) and send e-mail to [jane@lassenparkfoundation.org](mailto:jane@lassenparkfoundation.org).



The **Lassen Loomis Museum Association** is dedicated to making your visit a memorable learning adventure. The Association publishes and sells books and other items on the flora, fauna, and history of the Park. Profits are used to supply books, posters, maps, and videos to the Park's libraries and visitor centers and to support the Park's mission, museum exhibits, and other special projects. *Peak Experiences* is published through donations.

*I want to invest in the Lassen Loomis Museum Association. I've checked my annual membership option below and will send my check to:* Lassen Loomis Museum Association, P.O. Box 220, Mineral, CA 96063.

### Membership Benefits Investment

<input type="checkbox"/> Manzanita Lake	10% Discount on All Merchandise	\$20
<input type="checkbox"/> Chaos Crags	Plus a seven day Park Pass	\$50
<input type="checkbox"/> Diamond Peak	Plus "Flowers of Lassen" Book	\$100
<input type="checkbox"/> Emerald Lake	Plus a season Park Pass	\$250
<input type="checkbox"/> Brokeoff Mountain	Plus "Ishi, the Last Yahi" Video	\$500
<input type="checkbox"/> Lassen Peak	Plus a National Parks Pass	\$1,000

Name \_\_\_\_\_ Phone \_\_\_\_\_  
Address \_\_\_\_\_  
City \_\_\_\_\_ State \_\_\_\_\_ Zip Code \_\_\_\_\_

A portion of your donation may be tax deductible. Please make checks payable to the **Lassen Loomis Museum Association**. For more information about memberships and publications, please call (530) 595-3399, or visit our website [www.LassenLoomis.info](http://www.LassenLoomis.info).

## Information Stations

### Park Headquarters in Mineral

#### Hours of Operation

Monday-Friday 8 a.m. to 4:30 p.m.  
(closed holidays)  
Open daily 6/25 - 9/05

- Publications, wilderness permits, horse permits, Jr. Ranger Journals

### Loomis Museum at Manzanita Lake

#### Hours of Operation

Friday-Sunday 9 a.m. to 5 p.m.  
May 27-June 15  
Daily 9 a.m. to 5 p.m.  
June 16-Sep. 30

- Exhibits, orientation videos, publications, wilderness permits, horse permits, Jr. Ranger Journals, ranger-led programs

### Lassen Crossroads Information, at junction of Hwy. 44 & Park Road

#### Hours of Operation

Daily 8 a.m. to sunset  
April 23 - October 31

- Informational exhibits about the Park and Lassen National Forest (*Unstaffed*)

## Food & Supplies

### Peak Necessities Hours

Daily 9 a.m. to 6 p.m.  
June 18 - Sep. 4  
Daily 9 a.m. to 4 p.m.  
Sep. 5 - Sep. 30

### Manzanita Lake Camper Store Hours

Daily 9 a.m. to 5 p.m.  
May 26-June 17 & Sep. 5-Oct. 10  
Daily 8 a.m. to 8 p.m.  
June 18 -Sep. 4

## Accessibility

(most restrooms open summer only)

### Manzanita Lake

- Loomis Museum - information desk, exhibits, restrooms nearby
- Camper Store - store, restrooms,
- Campground - site, restrooms (with assistance)



### Summit Lake

- Picnic Area - vault toilet
- Campground - site

### Mineral

- Park Headquarters - information desk, restroom

### Bumpass Hell Parking Area

- Vault toilet (with assistance)

### Lassen Peak Parking Area

- Vault toilet (with assistance)

### Kings Creek Picnic Area

- Vault toilet

### Devastated Area Trail

- Interpretive trail, vault toilet

### Sulphur Works

- Interpretive boardwalk, vault toilets

Disabled visitors wishing to take a wheelchair or other conveyance on trails should check in at Park Headquarters or the Loomis Ranger Station.



# You Need To Know...

## For A Safe Visit

### BE ALERT WHEN DRIVING IN THE PARK

- Drive defensively; other drivers often make unexpected maneuvers and stops
- Use established pullouts when available
- Observe speed limits; the Park Road is 35 m.p.h. unless posted otherwise
- Remain on established roadways
- No off-road travel is permitted

### BE AWARE OF AND PREPARED FOR CHANGING WEATHER CONDITIONS

- Severe storms can occur suddenly
- Climb peaks and ridges early in the morning
- Head for lower elevation during lightning activity

### OBSERVE WILDLIFE AT A DISTANCE

- Feeding, harassing, and hunting wildlife is prohibited
- Wildlife can be dangerous
- Rodents can transmit the plague to you and your pets
- Secure all food and garbage properly at all times

### STAY ON ESTABLISHED TRAILS & BOARDWALKS

- ...especially in thermal areas, where ground may be dangerously thin. Bumpass Hell was named after a man who lost a leg after falling into boiling mud!
- Do not cut switchbacks or throw rocks
  - Wear sturdy boots
  - Carry plenty of water and food
  - Wear sunscreen

### PLAN TO FINISH HIKES WELL BEFORE SUNSET

- Sunset times are earlier in areas shadowed by mountains
- Always carry a flashlight with spare batteries and warm clothing in case of unexpected delays
- Sunrise and set times for Chester:

DATE:	JUNE	JULY	AUG	SEP	OCT
	Rise/Set	Rise/Set	Rise/Set	Rise/Set	Rise/Set
<b>1st</b>	5:37/20:29	5:39/20:39	6:03/20:19	6:33/19:36	7:02/18:46
<b>10th</b>	5:35/20:34	5:44/20:36	6:12/20:09	6:41/19:21	7:11/18:32
<b>20th</b>	5:35/20:38	5:52/20:30	6:21/19:54	6:51/19:04	7:22/18:17

 CONTACT PARK HEADQUARTERS OR LOOMIS MUSEUM FOR THE LATEST TRAIL CONDITION REPORTS

## Park Regulations

### PETS

- **Pets must be leashed or physically restrained at all times**
- **Pets are not permitted on trails**, including the Lassen Volcanic section of the Pacific Crest Trail, in the backcountry, or in any body of water (service dogs assisting disabled visitors are allowed on trails)
- Pets are permitted on established roadways, in campgrounds and picnic areas, and in other developed areas
- Pets may not be left unattended
- Please clean up after your pet and take responsibility for its behavior
- Ask about trails outside the Park where you can hike with your dog



### WEAPONS AND FIREWORKS

- All weapons and fireworks are prohibited
- Transporting weapons through the Park is allowed if declared at entrance stations and unloaded, cased, broken down, or otherwise packed to prevent use

### HIKING

- **Stay on marked trails and do not take shortcuts**, especially in the Lassen Peak area; hiking off-trail quickly erodes volcanic soils and damages rare and fragile alpine plants
- No one wants to hike through someone's lavatory.... Please use restrooms at contact stations or parking lots – there are no toilets on park trails. If “nature calls” before the end of your hike, bury waste. Pack out toilet paper in a plastic bag.

### PICNIC AREAS

- Do not leave food unsupervised – bears, foxes, and other animals have been known to snatch food off picnic tables
- Store food properly (*see page 4*)
- Campfires are not allowed in picnic areas; however, you are welcome to use campstoves or hibachis - dispose of coals properly in appropriate containers.



### FISHING

- Park fishing regulations conform to California State regulations
- A California State fishing license is required for those over age 16
- Manzanita Creek and the part of Manzanita Lake within 150 feet of the inlet are closed to fishing



- **Special regulations for Manzanita Lake:** Catch and release only; artificial lures and single, barbless hooks can be used

### BOATING

- Motorized boats are prohibited on all park waters
- Coast Guard approved personal flotation devices must be on board for all occupants and worn by children under age 12
- Lake Helen and Emerald, Reflection, Hat and Boiling Springs Lakes are closed to boating
- Boats may not be left on lake shores overnight
- At Manzanita Lake, boats may only be put in and taken out at the designated launch site

### CYCLING & SKATING


- Bicycles are permitted on park roads and in campgrounds but prohibited elsewhere; cyclists must obey all posted speed limits and traffic laws
- Helmets must be worn by all cyclists under age 18
- There are no mountain biking trails in Lassen Volcanic; ask at contact stations for trails outside the Park
- The use of any wheeled conveyance is limited to paved areas; no off-road travel is allowed
- Rollerskating, skateboarding, and in-line skating are not permitted in the Park



### CAMPFIRES

- **NO FIRES** are allowed in the backcountry or along trails; fire can escape and cause deadly wildfires!
- Campfires are allowed **ONLY** in fire rings provided at campgrounds



 For a complete listing of park rules and regulations, please ask at contact stations

### COLLECTING

- No collecting or removal of any objects from the Park such as rocks, wildflowers, pine cones, or cultural artifacts is allowed; please leave all objects for other people to enjoy



### HITCHHIKING

- Hitchhiking is not permitted; please plan ahead for travel between trailheads and other park locations

## Ranger-Led Programs



Regularly scheduled interpretation programs are offered at the Loomis Museum and Manzanita Lake Amphitheater.

Special evening talks are held at Warner Valley. Check park bulletin boards or ask at the Loomis Museum or Park Headquarters for schedules.

Programs offered this summer include: **Bear Necessities, Fault Talk, Early Birds, Junior Ranger, Manzanita Lake Evening Program, Skins and Bones, Drakesbad Campfire Talks.**

Ask at contact stations about special programs and educational activities for curious visitors of all ages!

The Park offers Junior Ranger, Volcano Club, Chipmunk Club, and Jr. Park Scientist activities.

**See Bulletin Boards throughout the Park for Schedules, or ask at Contact Stations.**

## UserFee

We put fee dollars to work for you! 80% of your entrance and campground fees fund vital projects right here at Lassen Volcanic National Park. Projects funded with User Fee dollars provide enhanced visitor services, protect your health and safety while you are here, and protect natural and cultural resources for you and future visitors.

### User Fee Projects in Progress

- Disturbed natural areas are being rehabilitated to preserve native plants and animals.
- New wayside exhibit panels will be installed throughout the Park this summer!
- Design has been approved for a new Southwest Entrance Station and construction will commence this summer.
- Our park website is being enhanced for your virtual visits! Read about User Fee projects at [www.nps.gov/lavo](http://www.nps.gov/lavo).



### Completed User Fee Projects

- The plaza and parking lot at the Loomis Museum provides enhanced features to visitor facilities, including a wheelchair-accessible ramp into the museum.
- A water treatment plant was built and provides potable water for campers at Butte Lake Campground.
- New and improved trail and campground signs were constructed and installed throughout the Park.
- Permanent museum exhibits in Loomis Museum display Native American baskets, historical objects, and geologic specimens.
- Bear-proof food storage lockers and trash receptacles were installed in all the campgrounds to ensure the health and safety of park visitors and bears and other wildlife.





"Welcome to Summit Lake!" Have a question about camping? Ask one of Lassen Volcanic's volunteer Campground Hosts.

## Bears and Your Food

Would you like to wake up early in the morning with a bear in your tent or trailer? Leave or store food and toiletries where they do not belong and you may have a wildlife encounter that you did not count on.

When animals get into food, your safety and property are jeopardized. Animals (such as rodents and foxes) can transmit diseases to humans and pets. The life of the animal may also be at risk due to malnutrition - most animals cannot properly digest human food. They may even forget how to obtain food naturally. Bears become aggressive and may harm people or ruin property that gets in the way of their search for people food. These bears may have to be killed as a last resort if they become dangerous.



It is your responsibility to store food, toiletries, and other scented items properly while in Lassen Volcanic National Park. Bear-proof lockers must be used day and night in all campgrounds. Store all food, coolers, and anything else with an odor in the lockers. Even toothpaste, lotions, and chapstick smells good to a bear! Where lockers are not provided, store items in the car trunk, sealed in plastic bags or containers to reduce odors. If the car has no trunk, put everything on the floor and cover it well. Make sure that all car windows and doors are tightly closed.

Keep a clean campsite and deposit garbage in garbage cans immediately. Improper storage of sensitive items, food or garbage may result in a citation or confiscation of the items.

Don't let bears approach you or your food. Wave your arms and make noise. If that fails to make them leave, throw small rocks in their direction (avoid hitting their face or head). Keep a safe distance but be persistent.

## Summer Weather

From elevations of 5650' in Warner Valley to 10,457' on top of Lassen Peak, a wide variety of weather conditions occur in Lassen Volcanic National Park. Expect a 5° temperature decrease for every 1000' increase in elevation. Be prepared for your visit by bringing layered clothing, a raincoat, and sunscreen.

MONTH	AVERAGE HIGH/LOW TEMPERATURES
June	79/34
July	84/40
August	85/40
September	78/36
October	69/30

Data is for Manzanita Lake, at 5,890' elevation.

# Camping

- Open and Close dates below are weather dependent. Campgrounds may open later or close earlier due to snow and freezing conditions
- Each campsite has a table, bear-proof locker, and fire ring
- Golden Age and Golden Access cardholders receive a 50% discount on camping, except for Group Sites

## Campsite Limit

- Limit of 6 people per family site
- Camping is limited to 14 days per year, with Summit Lake limited to 7 days per year

## Vehicles

- Two vehicles allowed per family site
- Park only on designated parking pad

## Quiet Hours

- Observed from 10 p.m. to 6 a.m.

## Food Storage

- All food including ice chests must be stored throughout the day and night in bear-proof lockers provided at sites

## RVs & Trailers

- Hookups are not available
- Some campgrounds have a limited number of sites available to accommodate trailers to 35'
- Dump Station near Manzanita Lake (\$5 fee)

- Check-out time for campsites is noon; check-in for reservation sites is 1:00PM

- Reservations are available for some sites (listed below) through ReserveUSA, [www.ReserveUSA.com](http://www.ReserveUSA.com) or (877) 444-6777. Juniper Lake group sites must be reserved through the Park's Fee Office at (530) 335-7029. All other sites are first come, first served.

## Group Camping

- Groups of 10 or more people can camp in Butte Lake, Lost Creek, or Juniper Lake Group Campgrounds
- Reservations are required for group campgrounds and should be made well in advance

## Fires

- Open fires are prohibited except in metal fire rings provided
- Gather only dead and down wood; do not cut tree limbs
- Use of chainsaws is prohibited

## More Information

- See Park bulletin boards for more information and updates

Campgrounds in Lassen Volcanic National Park	# of Sites	Daily Fee	Open & Close Dates	Toilets	Services
Southwest Walk-In - *This Campground will remain open until SW Visitors Facility construction begins. RV PARKING AT PARKING LOT (\$10).	20	\$14	*	Flush	
Summit Lake North - 6695' Located 12 mi. south of Manzanita Lake, 17.5 mi. north of Southwest Entrance. Accommodates trailers to 35'. Reservations for Loop B available through ReserveUSA. All other sites are first come first served.	46	\$16	7/1 to 9/6/05	Flush	
Summit Lake South - 6695' Located 12 mi. south of Manzanita Lake, 17.5 mi. north of Southwest Entrance. Reservations available for Loop C and D through ReserveUSA. All other sites are first come first served.	48	\$14	7/1 to 9/19/05	Vault	
Manzanita Lake - 5890' Located adjacent to and south of Manzanita Lake. Accommodates trailers to 35'. Reservations available for Loop A through ReserveUSA 6/30/05 - 9/06/05. All other sites are first come, first served. After 9/19 no water is available. \$10 - dry camping.	179	\$16	5/20 until snow closure **	Flush & Vault	Boat Launch
Craggs - 5700' Located 4 mi. south of Manzanita Lake. Accommodates trailers to 35'. First come, first served only.	45	\$12	5/27 to 9/6/05	Vault	
Lost Creek Group Sites - 5700' Located 4.5 mi. south of Manzanita Lake. Reservations through ReserveUSA are required.	8	\$50	7/1 to 9/19/05	Vault	
Butte Lake - 6100' Located 6 mi. south on dirt road via Hwy. 44 east, 17 mi. from Old Station. Accommodates trailers to 35'. Reservations available for Loop B through ReserveUSA. All other sites are first come, first served.	101	\$14	6/3 to 9/19/05	Flush & Vault	Boat Launch
Butte Lake Group Sites - 6100' Located 6 mi. south on dirt road via Hwy. 44 east, 17 mi. from Old Station. RVs maximum 35'. Each site accommodates 10-25 people. Parking for 6 cars or 1 bus per site. Reservations through ReserveUSA are required.	6	\$50	6/3 to 9/19/05	Flush & Vault	Boat Launch
Juniper Lake - 6792' Located on east shore of Juniper Lake via rough dirt road leading 13 mi. north of Chester. Not recommended for trailers. First come, first served only. No water.	18	\$10	7/1 to 9/26/05	Vault	
Juniper Lake Group Sites - 6792' Located on east shore of Juniper Lake via rough dirt road leading 13 mi. north of Chester. Tents only. Reservations through the Park's Fee Office required. Call (530) 335-7029. No water.	2	\$30	7/1 to 9/26/05	Vault	



# Into the Wilderness

## Required Permits

- A free wilderness permit is required for overnight camping in Lassen Volcanic's wilderness
- Limited to a maximum of 10 people per permit and per site; up to 20 people may hike together
- Camping limited to 14 days per year

### Questions about permits?

- Ask at Entrance Stations or Information Stations

### Permits are available in person during operating hours at:

- Loomis Museum
- Park Headquarters

### Outside of operating hours you may self-register at the Park Headquarters, Southwest Entrance Station and Trailheads at Juniper Lake, Butte Lake and Warner Valley.

- Follow instructions on the Backcountry Camping bulletin board. PERMITS ARE VALID ONLY IF COMPLETE.

## Fires Are Prohibited

- Use only portable campstoves in the backcountry



## Food and Clothing

- Bring extra food, clothing, and water in case of emergencies or sudden weather changes
- Hang food and garbage out of animals' reach for your safety and their health (Lassen Volcanic has black bears)



## Wildland Ethics

*"A thing is right when it tends to preserve the integrity, stability, and beauty of the biotic community. It is wrong when it tends otherwise." – Aldo Leopold, A Sand County Almanac*

Forester and philosopher Aldo Leopold expressed this sentiment in the 1930's. Today, increasing numbers of backcountry visitors are coming to the same realization as they witness their favorite wilderness haunts being loved to death by recreationists seeking adventure and solitude.

Simple living, adventure and solitude can still be part of our backcountry travels, but in order to assure their continued existence we must take the responsibility to educate ourselves and to become equipped with skills and habits that enable us to Leave No Trace.

### Principles of Leave No Trace include:

- Plan ahead and prepare
- Camp and travel on durable surfaces
- Pack it in, pack it out
- Properly dispose of what you can't pack out
- Leave what you find
- Use a campstove (no fires)
- Respect wildlife
- Be considerate of other visitors

These principles are recommended as a guide to minimizing the impact of your backcountry visits. Leaving no trace depends on attitude and awareness more than on rules and regulations. Minimize your impact on the land and on other visitors. Preserve and protect your wildlands for this and future generations.

You can find more information on the Web at [www.LNT.org](http://www.LNT.org) or telephone 1-800-332-4100.

## Water

- Purify park surface waters before drinking to avoid giardia and cryptosporidium. Multiple barrier technology is recommended:
  - Use a 2 micron or better filter
  - Use iodine tablets
  - Boil water for a minimum of 5 minutes
- Do not wash clothing or utensils or use any cleaning agents in park waters
- Dig latrine and bury human waste and toilet paper 6" deep, at least 100' from lakes, streams, and springs

## Campsites

- Camp at least 300' from other groups
- Do not camp in meadows, or on fragile vegetation
- Camp at least 100' from high watermark of lakes, springs, and streams
- Do not construct "improvements" such as windbreaks, log bridges, etc.
- Camp at least 1/2 mile from developed areas, campgrounds, and roads
- Pack out toilet paper
- Ask about areas closed to camping

Lassen's backcountry contains 150 miles of hiking trails, including 17 miles of the Pacific Crest Trail. Trails vary in length and difficulty, winding through coniferous forest, alpine tundra, and along waterways.

Please Leave No Trace behind!

Lazuli bunting, banded at Lassen Volcanic National Park



## Stock

- Permits are required for day use
- 10 campers per site
- No overnight stays in the backcountry
- Corrals are available by reservation only at (530) 335-7029
- Owners must bring their own feed. NO GRAZING.

### Butte Lake Hitching Posts and Campsite

6/03/05 - 9/19/05

One site. Cost is \$4 per animal and \$14 per night. Accommodates 8 animals. Parking for 3 trailers. Scoop manure and place in container provided.

### Juniper Lake Corral & Campsite

7/01/05 - 9/26/05

One corral that can be divided into two, if needed, accommodating as many as 8 animals. Cost is \$4 per animal and \$10 per night. Water is available for stock only. Parking for 2 trailers.

### Summit Lake Corral & Campsite

7/01/05 - 9/06/05

One corral that can be divided into two, if needed, accommodating as many as 8 animals. Cost is \$4 per animal and \$14 per night. Parking is available for 2 trailers. Scoop manure and place in container at site. Water is available for stock only.

## Visiting During Construction of Kohm Yah-mah-nee Facility and Southwest Entrance Station

Construction is scheduled to begin in Summer, 2005 and extend through October, 2006. The project will involve demolition of the old Lassen Chalet and construction of a new Visitor Services Facility, Entrance Station, Ranger Operations Building, and Equipment Storage. For overall visitor safety and construction efficiency we will close the entire construction area to all visitors and limit park operations within this construction zone.

If you visit during this time, you may encounter traffic delays on Highway 89 in the Southwest Area of the Park. To minimize the inconvenience, consider traveling earlier in the morning or entering the Park from the Manzanita Lake Entrance, off of Highway 44. Or, take this opportunity to explore a less-traveled part of the Park: Butte Lake, Warner Valley, and Juniper Lake on the east side of the Park.

The Southwest Entrance Station will operate from May 15 - October 30, 2005. No fees will be collected at the SW Entrance during the winter season of 2005-2006. We anticipate construction of the new entrance station will be completed by Memorial Day, 2006. Interpretive Rangers will be available from 8am to 6pm daily at Brokeoff Trail Parking Lot to assist Entrance Station staff with traffic control and visitor information. Three new informational bulletin boards will be placed at Sulphur Works, Bumpass Hell, and Lassen Peak parking lots. An extensive media plan has been established for informing community members and visitors of all updates throughout the construction period.

Trailheads along the Park Road, including Lassen Peak and Bumpass Hell, will remain open. The Mill Creek Trailhead will be inaccessible during construction. The Southwest Walk-in Campground will remain open until construction of the new Visitor Services Facility begins and will remain closed until construction is completed. However, other park campgrounds will be open. If you are looking for a less-used campground, Butte Lake Campground provides campers with plenty of solitude, lakes for swimming and non-motorized boating, and some of the best hiking in the Park. Private and USFS campgrounds are available less than 10 miles away from the Southwest Entrance in the towns of Mineral and Mill Creek.

# Wilderness Laboratory

National parks and wilderness areas are key places to conduct scientific studies because of their relatively pristine state. National Park Service staff and independent researchers study aspects of Lassen Volcanic to better understand the geology, flora and fauna, natural processes, and human impacts on the Park. Below are some projects in progress this year.

**Spotted Owl Inventory:** The California spotted owl lives in old-growth forests throughout the Cascade and Sierra Nevada Mountain ranges. Large trees provide cavities for nesting, and the forest supports prey species, such as squirrels and voles. The park contains potential habitat for the owl, and park-wide surveys will be conducted for this owl in 2005 and 2006.

**Air Quality Monitoring:** Lassen contains over 78,000 acres of wilderness. Thus, it is managed as a "Class I air shed," meaning it receives the greatest possible protection. The Park operates an air quality station in the Manzanita Lake area that is part of a nationwide monitoring system. The station checks ambient ozone levels, particulates (soot, dust, etc.), and acid deposition.

**Wetlands Assessment:** Wetlands are the link between land and water, where the flow of water, the cycling of nutrients and the energy of the sun meet to produce highly productive ecosystems. This year, park staff and scientists from Oregon State University, will survey the park for the presence of wetlands and evaluate the health of these important areas.

**Water Quality Analysis:** Researchers from the U.S. Geological Survey will analyze water quality at 32 lakes and streams within the Park. Selected chemical and physical properties, such as pH and temperature, will be measured at each site to establish a baseline that can be used to track changes in the Park's water quality over time.

**Mist Netting and Bird Banding:** There is strong concern over declining songbird populations in the U.S., particularly birds that migrate to the tropics. Since 1997, a cooperative project between the Point Reyes Bird Observatory, Lassen Volcanic and Lassen National Forest has studied songbirds in the Lassen area, which is a critical summer breeding ground for many neotropical migrants. Each captured bird is given a U.S. Fish and Wildlife Service band for identification and key characteristics are recorded before it is released. The information will help biologists monitor the health of bird populations in the region.

**Nonnative Plant Removal:** Nonnative "invaders" can push out native plant species, reduce native food for animals, and even change the properties of the soil where they grow. Park biologists have identified problem species and are working to remove invasive plants. Ask at contact stations for information to help you identify invasive plants. If you see any of the plants, please report the species identified and its location. You can also join park staff and volunteers on weed projects.



# Nearby Businesses

Lodging, meals, gifts, and services are available near Lassen Volcanic National Park. Inquiries or reservations should be directed towards the individual business. These businesses' donations helped pay for this issue of *Peak Experiences*.

## Inside Lassen Volcanic National Park

**To Serve You in Lassen Volcanic National Park...**

**Peak Necessities Café and Gifts**  
**Dine, Hike, Shop & Rest at the Base of the Volcano!**  
 Gifts • Souvenirs • Fresh Sandwiches  
 Beer & Wine • Apparel • Moonlight BBQ's

Located At 8500' at the Base of Majestic Lassen Peak in the Lassen Peak Trailhead Parking Lot 8 miles from the Southwest Entrance, Highway 89 at 38E. Open Early June to Late September (Weather permitting)

**Manzanita Lake Camper Service Store**  
 Gifts • Souvenirs • Apparel  
 Snack bar • Espresso • Groceries  
 Beer & Wine • Ice • Wood • Gasoline  
 Camper Supplies • Showers • Laundry

Northwest Entrance, Highway 89 at Highway 44. 530-335-7567  
 Open Late May to October

California Cover Services, Inc. is an authorized concessionaire of the National Park Service

**HIKING TRAILS OF LASSEN VOLCANIC NATIONAL PARK**  
 114 pages in color, covers all of Lassen's trails, plus a wildflower section.  
**\$14.95**

For sale at Park Headquarters, Lassen Mineral Lodge, Mill Creek Resort, Manzanita Lake Museum and Store, Lassen Gift Shop in Chester, and on Amazon.com.

## Southeast of Park, Hwy 36: Mineral (cont'd)

**Volcano Country Camping & R.V.**

**\* Full R.V. Hook-Ups  
 \* Tent Camping \* Laundry  
 \* Hot Showers \* Post Office  
 \* Propane \* Dump Station**  
 AAA and WOODALLS Approved  
**(530) 595-4422 reservations**  
 (530) 595-3347 message number  
 Groceries and Dining next door.  
 See the Lassen Mineral Lodge Ad.  
**www.minerallodge.com**

Turn right from the National Park's southwest entrance & go 4.3 miles to Mineral. Check in at the Lassen Mineral Lodge General Store.  
 Family owned and operated.

**MCGOVERN'S MT. LASSEN CHALET'S**  
 Mineral, Calif

Open year round. 9 miles from South entrance of Volcanic Park. Fully equipped 3 or 4 bedroom homes, can accommodate groups up to 30.

Gretta, Julie and Frank McGovern  
**(530) 595.3241 - (415) 897.8377**  
 Cell: (415) 328.3279  
**www.mtlassenchalets.com**

## Southeast of Park, Hwy 36: Chester & Lake Almanor (cont'd)

**The Bidwell House**  
*A bed & breakfast inn*

#1 Main St./P.O. Box 1790  
 Chester, CA. 96020  
 (530) 258-3338  
**www.bidwellhouse.com**

"The food is to die for."  
 -Reno Gazette Journal

"One of the area's most distinctive Inns..."  
 - Sunset Magazine

- Swimming
- Hiking
- Golfing
- Skiing
- Fly-Fishing
- Mountain Biking

**LAKE ALMANOR WEST GOLF COURSE**  
**(530) 259-4555**

\*Corporate Outings \*Restaurant  
 \*Driving Range \*Open to Public

~ Just 30minutes from Lassen Park S/W Entrance ~  
 Hwy 89 at Lake Almanor West Drive  
 3-Miles off Hwy 36  
**SPRING & FALL SPECIALS**

## South of Park, Hwy 36: Mineral

**Lassen Mineral Lodge**  
 "come into our home"

**Motel \* Kitchenettes \* Restaurant  
 Cocktails \* Outdoor Dining Patio \* Gifts  
 General Store \* Liquor \* Outdoor Supplies**  
 Open all Year \* Cross Country Ski and Snowshoe Rental  
**(530) 595-4422**  
 Fax (530) 595-4452  
**www.minerallodge.com**

Turn right from Lassen Volcanic National Park's Southwest Entrance on Hwy. 36 & go 4.3 miles to Mineral.  
**U.S. Post Office and National Park Headquarters are located in the town of Mineral.**  
 P.O. Box 160 Highway 36 East Mineral, CA 96063  
 Come in and check out our walls of pictures!  
 Family Owned and operated.

R.V. and Tent Camping next door. See Volcano Country Camping & R.V.

**Childs Meadow Resort**  
 41500 HWY 36E • MILL CREEK, CA 96061  
 (530) 595-3342

**Debra Zimmerman  
 Steve Love**

Motel - Cabins - Housekeeping Chalets - Store & Café  
 Meeting Facilities - Ski Rental - Horse Camping  
 RV Park - Dump Station - Showers & Laundry

When leaving the SW Lassen Nat'l Park entrance, turn left We're 5 miles on the left (in Childs Meadows)  
**www.childsmeadowresort.com**

**SHARON & WILL HENRY**

**Lassen Gift Company & Soda Fountain**

Phone (530) 258-2222  
 Fax (530) 258-2211

P.O. Box 736  
 220 Main St.  
 Chester, CA 96020

**Mill Creek RESORT**

GROCERIES  
 BEER • WINE  
 COFFEE SHOP  
 CABIN RENTALS  
 RV SPACES & CAMPSITES

**(530) 595-4449  
 MILL CREEK, CA  
 96061**

Terry & Georgene Neher  
 Georgia Litzler

**B+B BOOKSELLERS**

**Come See Our Wide Selection!**  
*Local History & Guide Books Available*

Look for the Yellow Awning

140 Main Street  
 Old Town Chester  
 (530) 258-2150

**SIERRA NEVADA CABIN GETAWAY**

Mineral, CA - Just 9 miles from the southwest entrance to Lassen Volcanic National Park

- fully furnished, 3-bedroom
- laundry facilities indoors
- private backyard with gas BBQ
- complete pit

2005 RENTAL RATES  
 \$ 95.00/nt. Sun-Thur.  
 \$ 110.00/nt. Fri-Sat.

**(530) 865-7135** (24 hours a day, 7 days a week)

## Southeast of Park, Hwy 36: Chester & Lake Almanor

**THREE BEANS coffee house & bakery**

ORGANIC COFFEES • TEAS • GREAT LUNCHES  
 "Fresh Baked Goods"

**530.258.3312**  
**150 MAIN ST. CHESTER, CA. 96020**

**Bodfish Bicycles & Quiet Mountain Sports**

149 Main Street Chester, CA 96020 530 258-2334  
 Your Quiet Mountain Sports Headquarters  
 Rental Bikes

North of Park, Hwy 44:  
Old Station & Hat Creek

• Motel Rooms  
• Cabins  
• RV spots  
• General store  
• Horse Motel  
• Restaurant  
• Great Fishing & family fun

John & Cindy Hammond  
Owners (530)335-7121

Mini Mart - Deli - Gas  
Gifts  
Deby Curtis  
13413 Hwy. 44 & 89  
Old Station, California 96071  
(530) 335-7117

Located along scenic Hwy 89  
Just 20 miles north of Lassen Park  
Jim & Elizabeth "Busy" Ryman  
OWNERS & MANAGERS  
15565 Black Angus Lane  
Hat Creek, CA 96040  
530-335-7418  
Reservations 1-800-346-3430  
E-mail ranchrv@c-zone.net  
Web http://www.rancheriarv.com

Housekeeping Cabins  
Groceries - Beer - Wine - Ice - Bait & Tackle - Propane  
Fishing & Hunting Licenses  
14 mi. north of Lassen Volcanic National Park  
Hwy. 44/89, Old Station, CA 96071  
(530) 335-7114  
Email: rimrock@frontiernet.net  
www.rimrockcabins.com

Northwest of Park, Highway  
44: Shingletown & Viola

Local Red Wine Tasting  
Sat & Sun 12pm - 4pm  
530-474-WINE  
31636 Forward Road  
Manton, CA 96059  
algergrape@comcast.com

"A True Camping Experience"

QUIET SITES NESTLED IN THE PINES  
• Long Pull-Thrus • Laundry  
• Full Hookups • General Store  
• Swimming Pool  
RESERVATIONS: 1-800-KOA-3403  
OR 530-474-3133  
Hosts John & Linda Evans  
7749 KOA Road  
Overlooking Shingletown, CA

Northwest of Park, Highway 44:  
Shingletown & Viola (cont'd)

Tom Knight  
Manton Realty  
an affiliate of RMA Consultants  
P.O. Box 589  
21800 Cedar Ridge Road  
Manton, CA 96059  
PH (530) 474-1335 • FAX (530) 474-1336  
mantonland@frontiernet.net  
www.mantonproperty.com

The Cabins at Cedar Hollow  
Peace and quiet amongst the Cedars  
In the hills of Manton, Ca overlooking your  
own Koi pond  
◆◆◆◆  
(530) 474-1584 www.lassencabins.com

Shingletown Medical Center  
31292 Alpine Meadows Road  
Shingletown, CA 96088  
(530) 474-3390

Here to help you  
with your health!!

OFFERING PRIMARY HEALTH CARE:  
8:30am to 5:00pm Monday - Friday

A Mountain Nursery and Gift Shop  
Focusing on unique cold hardy plants that do  
well in the mountains.  
(530)474-3240 www.plantstogo.com  
A bit out of the way but quite out of the ordinary!  
Located 1 mile east of Shingletown on Hwy. 44

Watercolor Adventure  
with  
Howard "Luke" Lucas

- Outdoor Painting Excursions
- Lessons for Adults or Children  
at Campsites in or Near the Park, or at Studio

Professional Grade Materials Available  
Watercolor Studio  
Paintings for sale  
MT. LASSEN ART CENTER  
Seven miles west of the North Entrance  
Lassen Volcanic National Park  
36373 State Highway 44, Viola, CA 96088  
(530) 474-3800  
www.watercolors-art.com

North of Park, Hwy 89: Hat  
Creek, Burney, Fall River Mills

Class II-III rapids  
Single and Double Runs  
Paddle Rafts / Inflatable Kayaks  
Beautiful scenery & Abundant Wildlife  
This is an ideal activity for family, friends and businesses,  
social and church groups.  
We will design a special trip for you!  
P.O. Box 337, Fall River Mills, 96028  
Day: (530) 336-6747  
Night: (530) 336-6940  
Fax: (530) 336-6747  
www.familyriver.com

Gifts, Home Decor & Antiques  
◆ decorative accessories for the home ◆ frames  
◆ candles, large variety of holders & houses  
◆ stationery & accessories ◆ French soaps  
◆ linen ◆ baby gifts ◆ Lodge Decor  
◆ Camille Beckman, full line of bath & body products  
◆ Christmas all year ◆ "tea" things ◆ Gourmet chocolate  
◆ Blue Sky ◆ inspirational books, Bibles & gifts  
◆ Furniture old & new ◆ Antiques large & small  
◆ much more 37096 Main Street 530-335-5400  
Burney, CA 96013

Northwest of Park, Hwy 44:  
Palo Cedro

"The Gathering Place of Palo Cedro"  
Old Fashion Country Cooking  
Breakfast & Lunch 7 Days a Week  
Dinner Tuesday to Saturday  
6:30 a.m. to 9:00 p.m. Tues - Sat  
7:00 a.m. to 2:00 p.m. Sun & Mon  
Hwy 44 & Deschutes Rd. - South of Overpass  
(530) 547-4280

Southwest of Park, I-5:  
Red Bluff

TEHAMA MOTOR PARTS  
1030 Main  
Red Bluff, Calif. 96080  
527-4135

RON NYE

Publication of *Peak Experiences* is made possible  
by donations from the National Park Foundation  
and the Lassen Loomis Museum Association.  
Printed with soy-based ink on 40% recycled  
newsprint by LyRo Printing of Redding, CA.

# Wear Green

PRESERVE – PROTECT – ENJOY – NPS



The Lassen Loomis Museum Association is now offering a GREEN awareness wristband engraved with a portion of the National Park mission, PRESERVE – PROTECT – ENJOY – NPS .

As a tribute to Lance Armstrong's fight against cancer, the Lance Armstrong Foundation and Nike launched the LiveStrong yellow wristband campaign in 2004. Over 25 million LiveStrong wristbands have been purchased in support of cancer research and finding a cure. It is in the spirit of awareness of the National Park Service (NPS), its themes and mission that we are offering the GREEN wristband.

As you visit your national parks this summer, recycle your trash, turn off that extra light, or camp, hike, and boat sustainably. Consider how your thoughtfulness keeps our world alive. When you stare in awe at the Liberty Bell, Statue of Liberty, or George Washington's home, you are reminded of our American legacy, the national parks! Show your support, wear GREEN!

Help support an American treasure - our national parks! Your purchase is a contribution to the preservation and protection of Lassen Volcanic National Park. By wearing green you also share with the world an awareness of the National Park Service (NPS), its themes and mission.

Our wristbands are GREEN and engraved with a portion of the national park mission, PRESERVE - PROTECT - ENJOY - NPS, as this represents so many things the national parks stand for:

- \*GREEN represents new growth, spring, new life
- \*A GREEN, or common, is a town park
- \*Recycle and Sustainability are symbolized by GREEN
- \*Park Rangers wear GREEN
- \*GREEN is nature

Join us in Preserving, Protecting, and Enjoying the National Parks.

## Wildland Fire Use

Wildland Fire Use is one strategy that Fire Management at Lassen Volcanic National Park is using to reintroduce fire into forest ecosystems that are adapted for fire, restore healthy forests, remove heavy buildups of hazardous fuels and improve wildfire prevention and suppression.



Lassen Peak and the Bluff Fire  
Photo by M. Lewelling

Wildland Fire Use occurs when a fire ignited by lightning is managed in a predetermined geographic area, under strict parameters to achieve specific resource management objectives. During Wildland Fire Use projects all of the firefighting tools are available to complete the project successfully. Helicopters, helitorches, air tankers, engines, drip torches, aerial ignition devices, firefighters and managers can all play a role in managing a successful wildland fire use project.

In 2004 The Bluff Wildland Fire Use Fire was actively managed in Lassen Volcanic National Park for over four months and eventually covered an area of 3,413 acres. Although small portions of the burned area experienced high burn severity, fire effects over the entire burn area were excellent. There is a true mosaic of fire intensities providing diverse habitats for healthy plant and animal communities.

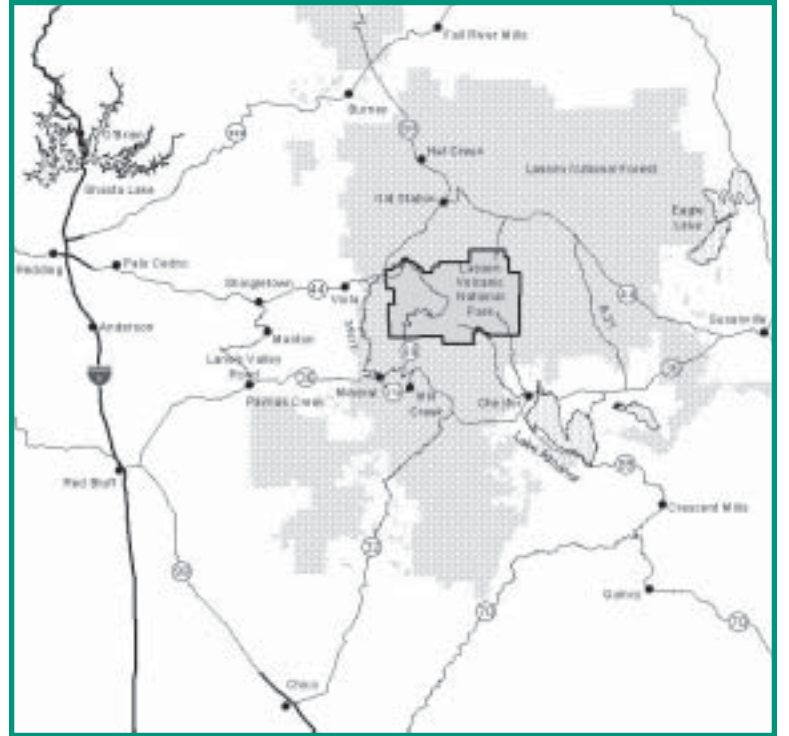


Cinder Cone and the Bluff Fire  
Photo by M. Lewelling

Fire suppression, prescribed fire and mechanical thinning are also necessary strategies that fire managers employ to preserve and protect park resources.

## Area Map

(MAP NOT TO SCALE)



### Be A Volunteer!

You can make a difference in the protection and preservation of Lassen Volcanic National Park.

The Park has a variety of opportunities for individuals and groups to volunteer their time and talents from four-hour projects to long-term positions and internships.




Perhaps you would like to assist with:

- \* Camp hosting
- \* Vegetation & Wildlife Research
- \* Computer Projects
- \* Visitor Contact Stations
- \* Trail & Campground Maintenance
- \* Search & Rescue
- \* Visitor & Education Activities
- \* Clerical Projects
- \* Recycling
- \* Non-Native Plant Removal
- \* Photography
- \* Cultural Resources Work
- \* Ski Patrolling

Your volunteer work could provide you with an enjoyable, rewarding experience and at the same time help care for Lassen Volcanic National Park for this and future generations.

For more information about the park volunteer program, please contact:

**Park Volunteer Program Manager,  
Lassen Volcanic National Park,  
P.O. Box 100,  
Mineral, CA 96063-0100  
Telephone: 530/595-4444 ext. 5133  
E-mail: nancy\_bailey@nps.gov**



## Join the Green Team: Recycle!

You can help keep Lassen Volcanic National Park clean and green by participating in the Park's recycling program.


This past year the Park, with the help of volunteers, employees and visitors like you, recycled 34.5 tons of plastic, glass, aluminum, tin and paper. The Park recycled some materials that may surprise you ... as part of a restoration project, a damaged steel bridge from Warner Valley of which 3,000 pounds was taken to a recycler in Chester and 80.2 tons of concrete were also recycled. **That is a total of 16.2 tons (or 23,240 lbs) of material diverted from local landfills!** We sent approximately 250 tons of brush, cull logs and hazard trees to a local cogeneration plant to be converted to electricity. This also significantly reduced the fuel load at Manzanita Campground.

As you deposit empty containers in our green recycle bins, you are not only keeping more trash out of landfills, but also saving energy. It takes less energy to make new cans and bottles from your recycled materials than from the raw materials extracted from the earth. Besides recycling glass and aluminum, we also recycle plastic containers.

Thanks to a generous grant from the *California Department of Conservation, Division of Recycling*, we are adding more recycle drop-off bins throughout the Park this year.

**What a great partnership!**

With everyone's help Lassen Volcanic National Park's recycling program will continue to grow. Please join the green team and recycle. Help keep your park clean and green for present and future visitors.



"The work upon which this article is based was funded in whole or in part through a grant awarded by the California Department of Conservation."  
<http://www.consrv.ca.gov/dor/>  
Toll-Free: 1-800-RECYCLE

