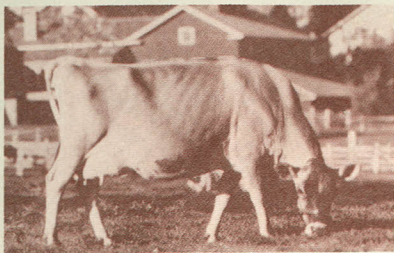


Billings Farm & Museum



Visitor's Map





Wyo Starinukas

Jersey cows produce exceptionally rich milk.

Billings Farm

- Championship Jersey herd
- Milking demonstration in late afternoon
- Trophy room
- Calf nursery
- Horse stables

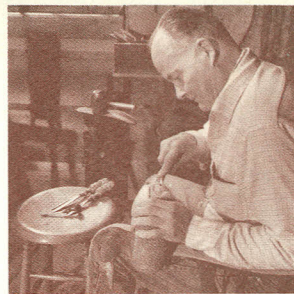


Brian Vanden Brink

Built in 1890 as a creamery, office, and residence for the farm manager and his family.

1890 Farm House

- A progressive farm manager's residence of the 1890s, with a period creamery, ice house, and farm office.

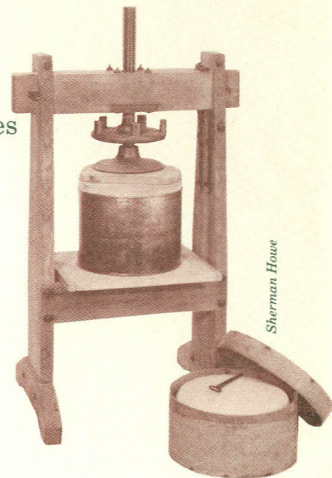


Jon Gilbert Fox

Activities are scheduled daily.

Museum Exhibits of 1890 Farm Life

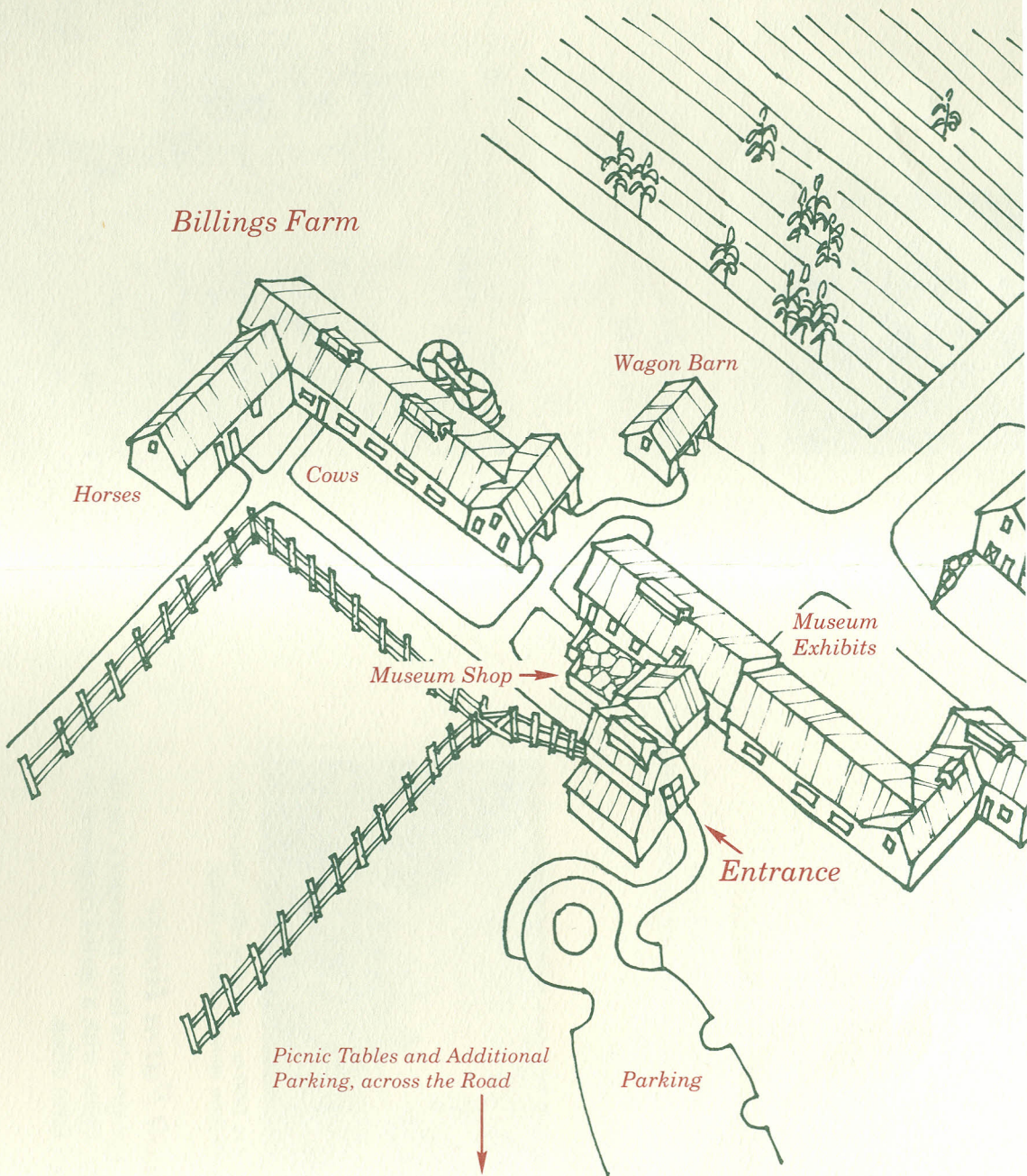
- *Entrance level: Introductory slide show*
- Making the Land Produce
- Haying
- Dairying
- Feeding the Stock
- Stone Walls and Fences
- Farm Workshop
- Farm Home
- Farm Community
- General Store
- Maple Sugaring
- Ice Cutting
- Apple Orchard
- Wheels and Runners



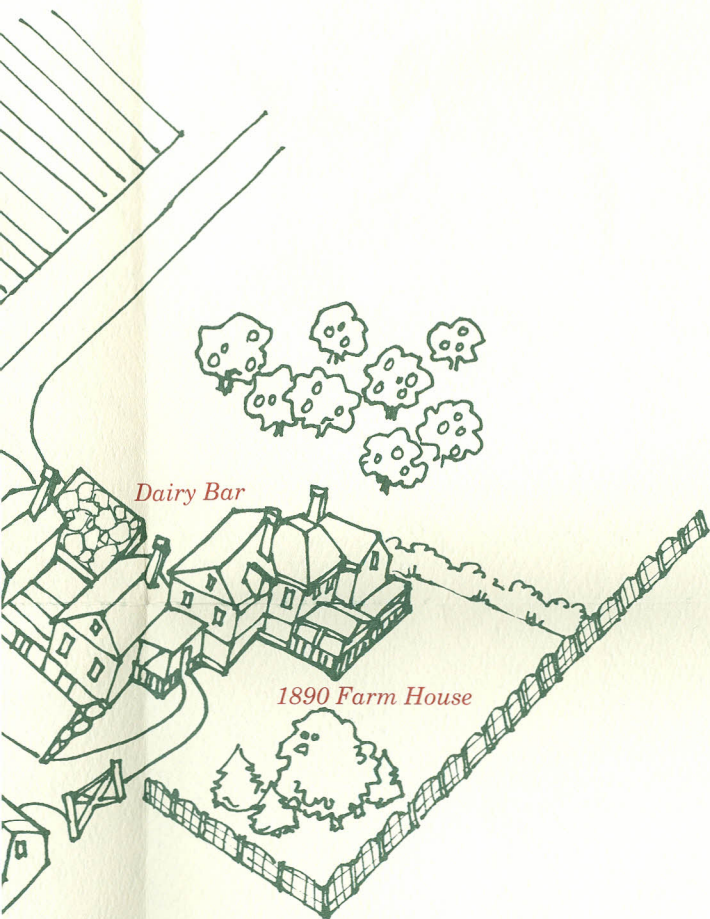
Sherman House

Welcome to the

Billings Farm



Billings Farm & Museum



We Encourage Your Comments

Please consider filling out the Visitor Survey you received at the ticket desk. It may be left at the desk when you leave or mailed to us. If you prefer, feel free to write us after your visit.

Billings Farm & Museum
River Road, P.O. Box 489
Woodstock, Vermont 05091
(802) 457-2355

Visitor Services

Dairy Bar: Ice cream and drinks may be purchased at the Farm House Dairy Bar (on the back terrace). We ask that visitors do not bring food or drinks inside museum buildings or barns.

First Aid: Please ask any museum employee for assistance.

Handicapped: Most areas are accessible by wheelchair. Wheelchairs and an elevator are available for visitor use.

Membership: Ask about applying today's admission towards membership. "There's a place for you at the Billings Farm & Museum!"

Museum Shop: The Shop is near the entrance to the museum and is open daily, selling books, postcards, and craft products.

Pets: No pets except guide dogs are permitted on the premises.

Photography: Use of hand-held cameras for private purposes is permitted. Attached flash units may be used. Prior arrangements are required for commercial photography or use of tripods and related equipment.

Rest rooms: Facilities are located near the ticket desk and in the basement of the Farm House. All are equipped with baby changing facilities.

Smoking: Please do not smoke in any building.

Telephone: A public phone is down the hallway, across from the ticket desk.

Tour Groups and Buses: Discounted rates are available for parties of ten or more. Please reserve in advance so we can better meet your needs.

Please note: This is a working farm. Please stay on the paths, and do not go into farm fields and yards unless accompanied by museum staff. For safety's sake, please do not feed or come too close to the farm animals and equipment.

Billings Farm — Since 1871

Billings Farm was established in 1871 by Vermont native Frederick Billings, a lawyer, businessman, and philanthropist. He imported dairy cattle directly from the Isle of Jersey, kept careful records of milk production, and bred selectively to improve the herd. He planted more than 10,000 trees in the Woodstock area, putting into practice ideas that had been proposed by an earlier resident of the farm, George Perkins Marsh. Marsh is now widely recognized as one of America's first conservationists.

Today the Billings Farm continues as a dairy operation. Four original barns have been remodeled to house exhibits on rural life in late 19th century Vermont. The Farm House has been restored to its 1890s heyday.

