

Marsh-Billings-Rockefeller

National Park Service
U.S. Department of the Interior
National Historical Park
Vermont



Day Hikes In and Around the Park

By A. Schiller and M. Jager



Moonrise view from Mount Tom (Ed Sharron, NPS).



FIND YOUR **PARK**



Marsh-Billings-Rockefeller

National Park Service
U.S. Department of the Interior

National Historical Park
Vermont



Welcome to Marsh-Billings-Rockefeller National Historical Park, the only national park to tell the story of conservation history and the evolving nature of land stewardship in America.

The park interprets the historic home of the Marsh, Billings, and Rockefeller families, their conservation work, and stewardship of the forest landscape, and the emergence of an American conservation ethic. The 550-acre woodlands continue to be maintained for protection of natural resources, education, recreation, sustainable forestry, historic character, and scenic beauty.

To begin your journey, check out the Carriage Barn Visitor Center for information about tours, hiking, and park programs. The visitor center is open seasonally with restroom facilities open to the public.



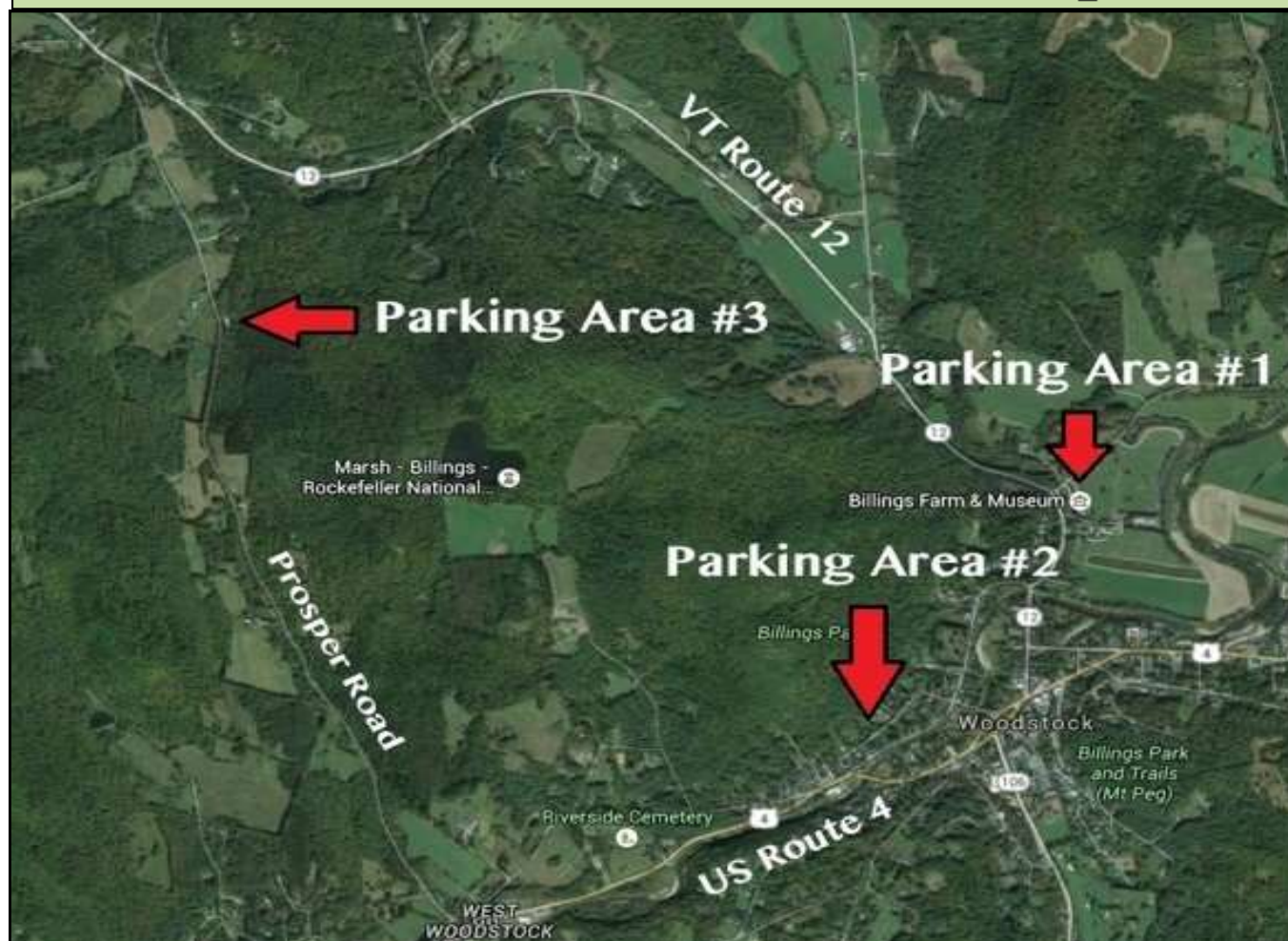
To use the maps in this guide, follow the symbol key described below:

Symbol Key:

	Parking		Suggested Route
	Scenic Viewpoint		
	Trailhead		



Parking



#1 Billings Farm & Museum Parking Area

The Billings Farm & Museum Area is the main parking location for access to Marsh-Billings - Rockefeller National Historical Park programs.

GPS: 43.63 152, -72.5 1588



Marsh-Billings-Rockefeller National Historical Park
Phone: 802-457-3368
Website: www.nps.gov/mabi

#2 Faulkner Parking Area

From the Billings Farm Parking Area, take a left onto Route 12. Follow Route 12 to the first intersection. At the intersection, bear right on River Street. Follow River Street until you reach a stop sign, then turn right on Mountain Road. On-street parking for Faulkner Park trails will be on your right, about 0.2 miles along Mountain Road. Faulkner Parking Area is located 0.9 miles from the Billings Farm & Museum Parking Area.

#3 Prosper Road Parking Area

From the Billings Farm Parking Area, take a left onto Route 12. Follow Route 12 until you reach an intersection. At the intersection, bear right down River Street. Follow River Street through a stop sign, until you reach an intersection that rejoins Route 4. Follow Route 4 0.8 miles. Just after you pass Woodstock Farmer's Market, take a right onto Prosper Road. Follow Prosper Road for 1.66 miles, the parking area will be on your right. Prosper Road Parking Area is located 3.3 miles from the Billings Farm & Museum Parking Area.

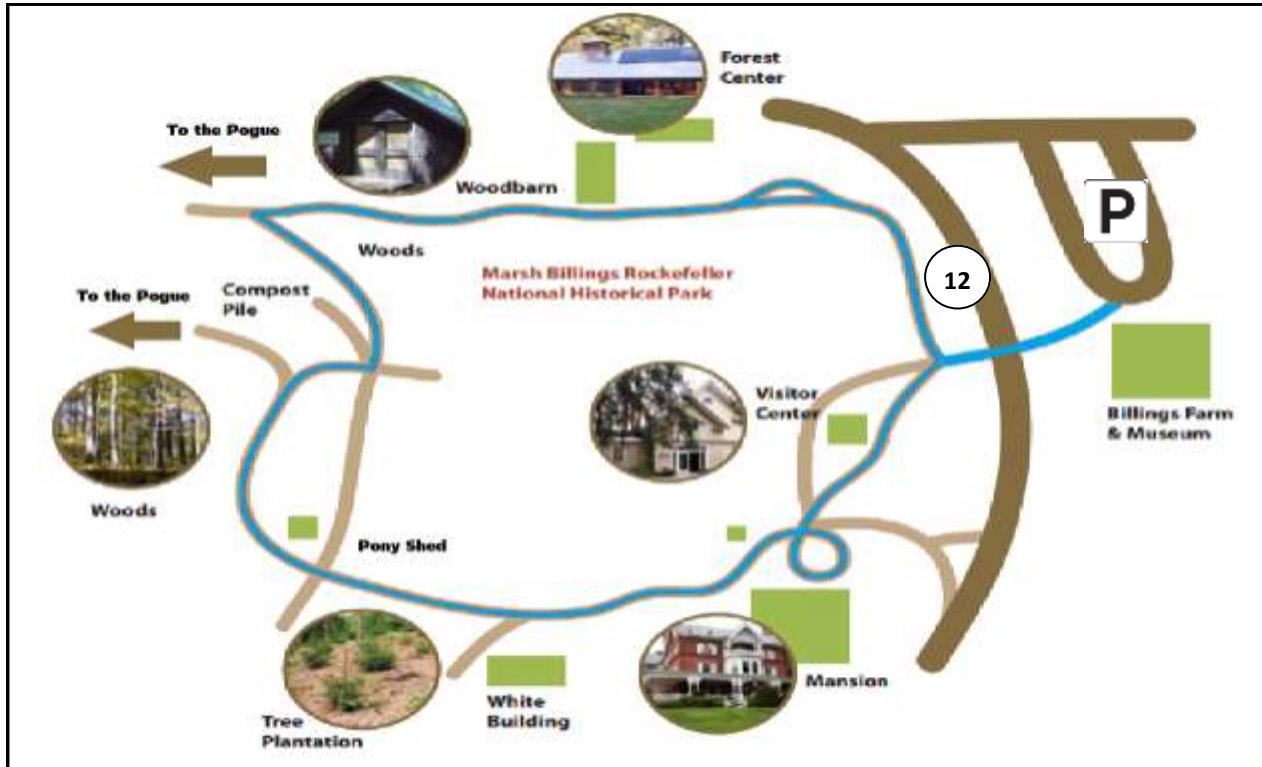
Hike Name	Hike Rating	Distance (Roundtrip)	Parking	Page Number
Hike #1 - Junior Ranger Loop	Easy with some short steep sections	1.25 miles	#1 Billings Farm & Museum Parking Area	5
Hike #2 - Faulkner Trail	Easy with gradual elevation gain	1.7 miles	#2 Faulkner Parking Area	7
Hike #3 - Hike to the Pogue	Moderate	2.5 miles	#1 Billings Farm & Museum Parking Area	9
Hike #4 - North Ridge Adventure	Moderate	3.6 miles	#3 Prosper Road Parking Area	11
Hike #5 - South Peak	Moderate	4.0 miles	#1 Billings Farm & Museum Parking Area	13
Hike #6 - Pogue and South Peak Loop	Moderate	4.0 miles	#3 Prosper Road Parking Area	15
Hike #7 - Precipice Trail	Difficult	2.0 miles	#1 Billings Farm & Museum Parking Area	17

Easy with some short steep sections

1.25 miles

Hike #1 - Junior Ranger Loop

#1 Billings Farm & Museum Parking Area



Description

The Junior Ranger Loop is a one and a quarter mile hike that can be enjoyed by nature-lovers of all ages! If you wish to complete the Junior Ranger Program, pick up a copy of the Junior Ranger Booklet at the Carriage Barn Visitor Center (or scan QR code at the bottom of the page for an online version).

Begin your journey by parking at the Billings Farm & Museum, then walk up the signposted pathway next to the flagpole. Cross Route 12 to enter into the park, then take a left onto the carriage road. Walk along the carriage road past the mansion until you see a white building above the gardens. Continue up the road above the white building. After passing a young tree plantation on your left continue walking through the woods.

At the sign for the Pogue, take the right fork. Take the path on the left at the five way intersection, heading down the hill until you reach the carriage road. Take a right down the hill, passing the Woodbarn and Forest Center on your left. Finish your hike by continuing downhill back to the park entrance.



Junior Ranger on the Mansion Lawn (NPS).

Scan for Junior Ranger Book:



Marsh-Billings-Rockefeller National Historical Park
Phone: 802-457-3368
Website: www.nps.gov/mabi

When Walking Woodstock, remember to always:

- Pack out what you pack in (Leave No Trace).
- Bring plenty of water.
- Keep your dog on a leash at all times.
- Please pick up after your dog, and dispose of the waste outside the park.
- Wear comfortable shoes with adequate support.
- Park at designated trailheads and lock your car.
- Choose a route that is within your ability, stay on the trails, and take a trail map with you.
- Let someone know your hiking plans, and stick to them.
- Bring a cellphone in case of emergency.



Marsh-Billings-Rockefeller Visitor Center: (802) 457-3368

Woodstock Police: (802)-457-1420

Emergency: Dial 911

Hike #2- Faulkner Trail



Hiking Mount Tom (NPS).



Description

The Faulkner Trail is a popular hike featuring gentle switchbacks that build up to an incredible panoramic view of Woodstock from the South Peak of Mount Tom. Most of the hike gradually gains elevation, leading to a scenic overlook with a bench. The last 100 yards to the summit is strenuous. At this section of the trail, a handrail assists walkers with the uneven footing up the steep terrain to the peak. *Give the rail a wiggle to ensure firmness before use.* Please remain on the trail, and don't cut the switchbacks.

History

The Faulkner trail was carefully constructed in 1937 by Marianne Faulkner in memory of her husband Edward Daniels Faulkner. She designed it to mirror gentle "cardiac health" trails in the spa town of Baden Baden, Germany. It connects the town of Woodstock with the trails of Marsh-Billings-Rockefeller National Park.

The Faulkner Trail has been continually maintained and repaired by groups including: the National Park Service Rivers Trails and Conservation Assistance Program; the Billings Park Commission; Vermont Youth Conservation Corps and the Student Conservation Association.



Marsh-Billings-Rockefeller National Historical Park
Phone: 802-457-3368
Website: www.nps.gov/mabi

When Walking Woodstock, remember to always:

- Pack out what you pack in (Leave No Trace).
- Bring plenty of water.
- Keep your dog on a leash at all times.
- Please pick up after your dog, and dispose of the waste outside the park.
- Wear comfortable shoes with adequate support.
- Park at designated trailheads and lock your car.
- Choose a route that is within your ability, stay on the trails, and take a trail map with you.
- Let someone know your hiking plans, and stick to them.
- Bring a cellphone in case of emergency.



Marsh-Billings-Rockefeller Visitor Center: (802) 457-3368

Woodstock Police: (802)-457-1420

Emergency: Dial 911

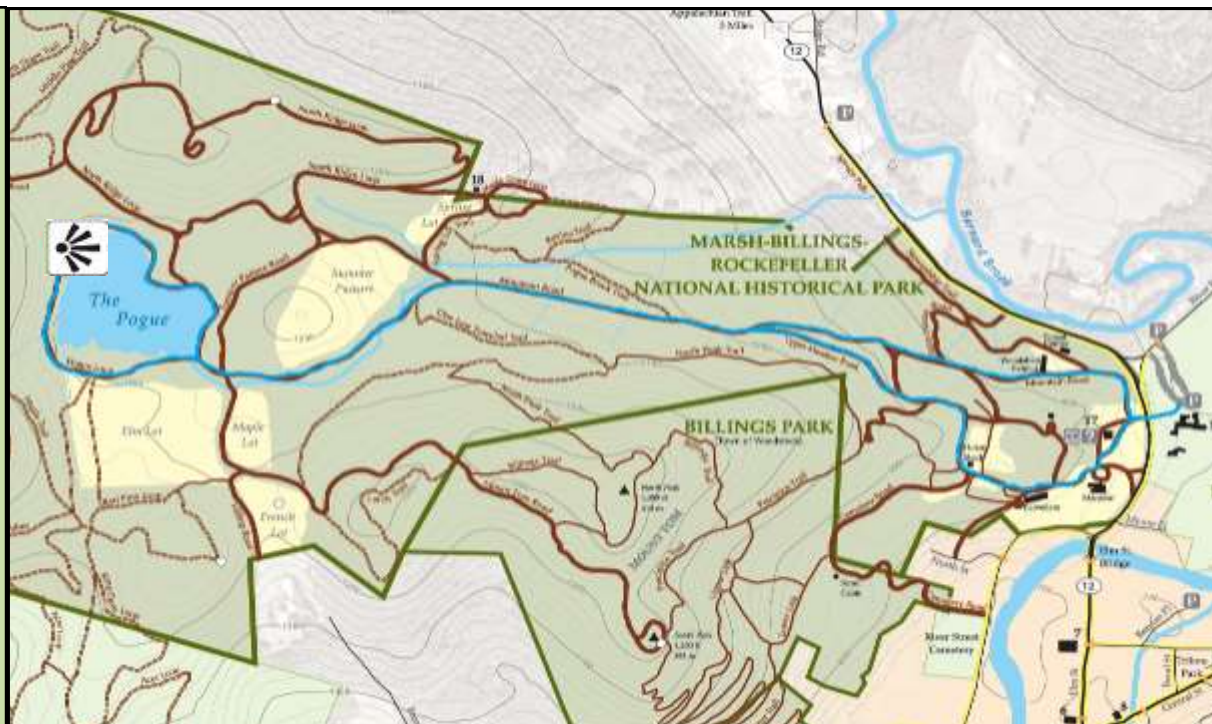
Hike #3- Hike to the Pogue

Description

Begin this scenic hike by parking at the Billings Farm & Museum, then take the signposted walkway by the flagpole. Cross Route 12 into the park, and then take a left past the Carriage Barn Visitor Center. Continue up the carriage road past the Belvedere (white building), and the Horse Shed. Continue on along Upper Meadow Road until it connects with Mountain Road. Hike up the mildly steep grade of Mountain Road until you reach a three-way intersection. Continue left along Mountain Road until you reach the Pogue. Take the Pogue Loop trail to observe beautiful views of our 14-acre mountain pond. Return the way you came, or take Mountain Road all the way back to the park entrance.

History

During George Perkins Marsh's time on this land, the Pogue was a spring-fed fen. Frederick Billings dredged and dammed it in the 1880s to provide water for his estate.



Geese at the Pogue in Fall (NPS).



Marsh-Billings-Rockefeller National Historical Park
Phone: 802-457-3368
Website: www.nps.gov/mabi

When Walking Woodstock, remember to always:

- Pack out what you pack in (Leave No Trace).
- Bring plenty of water.
- Keep your dog on a leash at all times.
- Please pick up after your dog, and dispose of the waste outside the park.
- Wear comfortable shoes with adequate support.
- Park at designated trailheads and lock your car.
- Choose a route that is within your ability, stay on the trails, and take a trail map with you.
- Let someone know your hiking plans, and stick to them.
- Bring a cellphone in case of emergency.



Marsh-Billings-Rockefeller Visitor Center: (802) 457-3368

Woodstock Police: (802)-457-1420

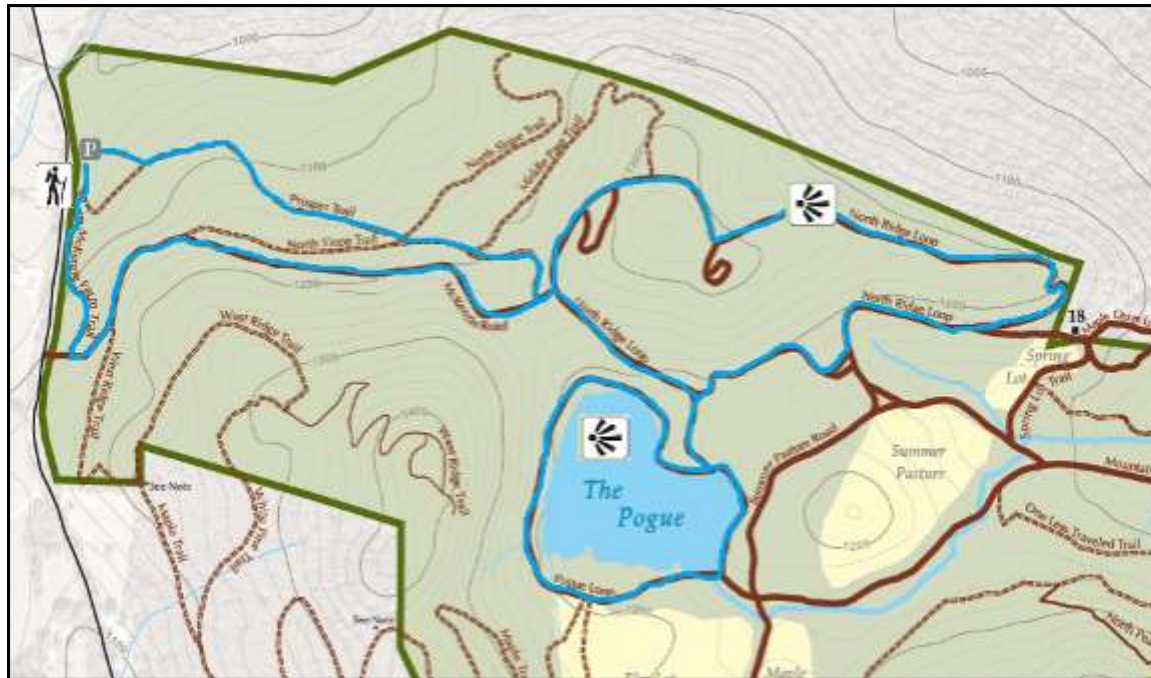
Emergency: Dial 911

MODERATE

3.6 miles

#3 Prosper Trailhead Parking

Hike #4 – North Ridge Adventure



Description

The North Ridge Loop is a 3.6 mile-long ecological exploration for all ages. Scan the QR code on the left side of this page, or visit the Carriage Barn Visitor Center to view a guided tour brochure on your phone.

Park at Prosper Trailhead Parking, and begin your hike at the kiosk. Pass through a wooden gate onto the McKenzie Farm trail. At the end of this trail, take a left onto McKenzie Road.

Follow McKenzie Road to a T-junction, and turn left onto the North Ridge Loop trail. After half a mile pass an overlook with a bench. Follow the winding North Ridge Loop downhill, passing the "to spring lot" sign intersection.

At the trail junction triangle where two large trees stand, veer left toward the Pogue, and a welcoming bench. Circle the Pogue and retrace your steps back up the path to the intersection with the two large trees.

Turn left uphill back onto the North Ridge Loop, and take a left onto McKenzie Road at the signpost. After just a few yards, turn right onto the Prosper Trail, descending steeply through the woods.

Stay on Prosper Trail, bearing right towards the short boardwalk that returns you to the parking area.

Scan for Guided Hike:



Autumn at the Pogue (NPS).



Marsh-Billings-Rockefeller National Historical Park
Phone: 802-457-3368
Website: www.nps.gov/mabi

When Walking Woodstock, remember to always:

- Pack out what you pack in (Leave No Trace).
- Bring plenty of water.
- Keep your dog on a leash at all times.
- Please pick up after your dog, and dispose of the waste outside the park.
- Wear comfortable shoes with adequate support.
- Park at designated trailheads and lock your car.
- Choose a route that is within your ability, stay on the trails, and take a trail map with you.
- Let someone know your hiking plans, and stick to them.
- Bring a cellphone in case of emergency.



Marsh-Billings-Rockefeller Visitor Center: (802) 457-3368

Woodstock Police: (802)-457-1420

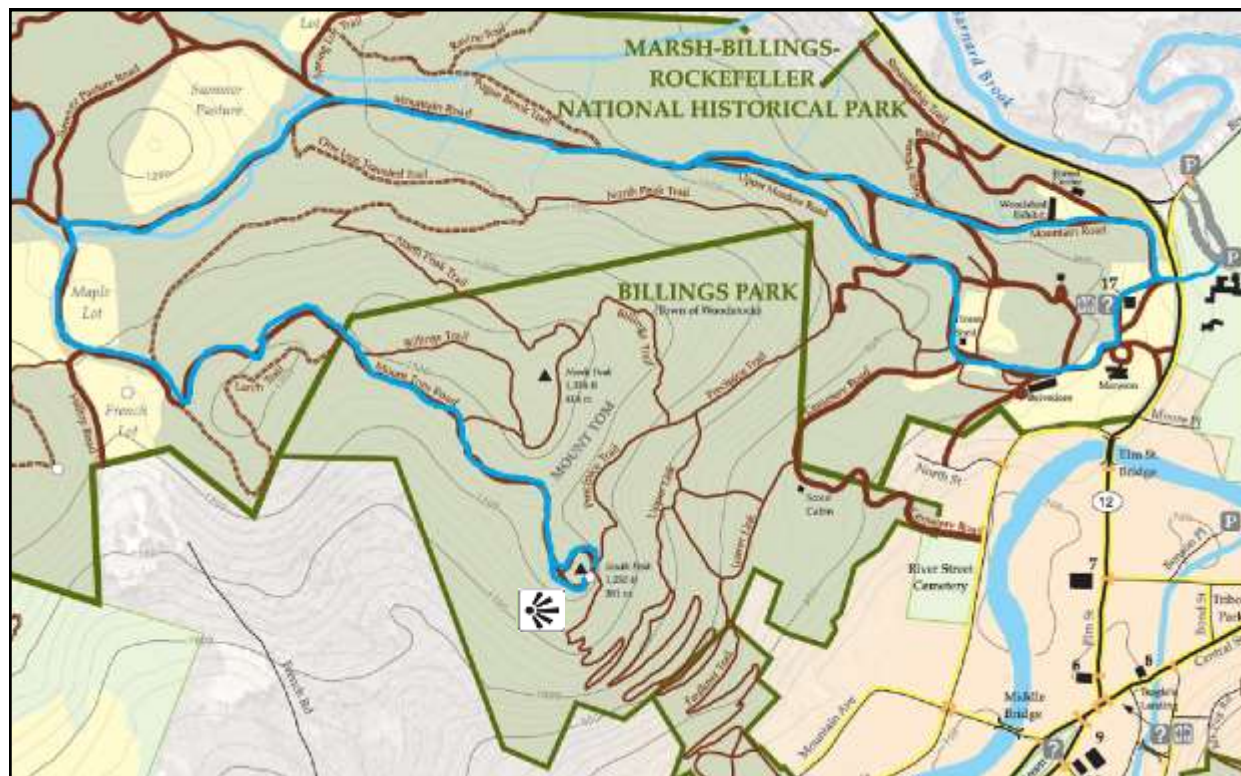
Emergency: Dial 911

MODERATE

4.0 miles

Hike #5– South Peak

#1 Billings Farm & Museum Parking Area



Description

One of the park's most popular hikes, this 4.0 mile round trip journey passes through the Billings' historic tree plantations. It crosses from the National Park into Billings Park, owned by the town of Woodstock.

Begin your hike at the Billings Farm & Museum Parking Area. Take the signposted walkway next to the flagpole, and cross Route 12 to enter into the park. Take a left up the hill, passing the Carriage Barn Visitor Center on your right, and continue on past the Mansion and Belvedere (white building) on your left. Continue up the carriage road that loops around the pasture, and follow Upper Meadow Road until you connect with Mountain Road. Continue on Mountain Road to a four-way junction. Turn left on Mount Tom Road to South Peak. For a short diversion in the middle of this hike, follow the signposts to the Pogue, a scenic mountain pond.

History

Mountain Road is part of an elaborate historic carriage road system constructed by Frederick Billings in the 1870s. The carriage roads were part of an estate plan designed by scientific farmer and landscape planner Robert Morris Copeland in 1869.

Moonrise from Mount Tom (Ed Sharron, NPS).



Marsh-Billings-Rockefeller National Historical Park
Phone: 802-457-3368
Website: www.nps.gov/mabi

When Walking Woodstock, remember to always:

- Pack out what you pack in (Leave No Trace).
- Bring plenty of water.
- Keep your dog on a leash at all times.
- Please pick up after your dog, and dispose of the waste outside the park.
- Wear comfortable shoes with adequate support.
- Park at designated trailheads and lock your car.
- Choose a route that is within your ability, stay on the trails, and take a trail map with you.
- Let someone know your hiking plans, and stick to them.
- Bring a cellphone in case of emergency.



Marsh-Billings-Rockefeller Visitor Center: (802) 457-3368

Woodstock Police: (802)-457-1420

Emergency: Dial 911

Hike #6- Pogue and South Peak Loop

MODERATE

4.0 miles

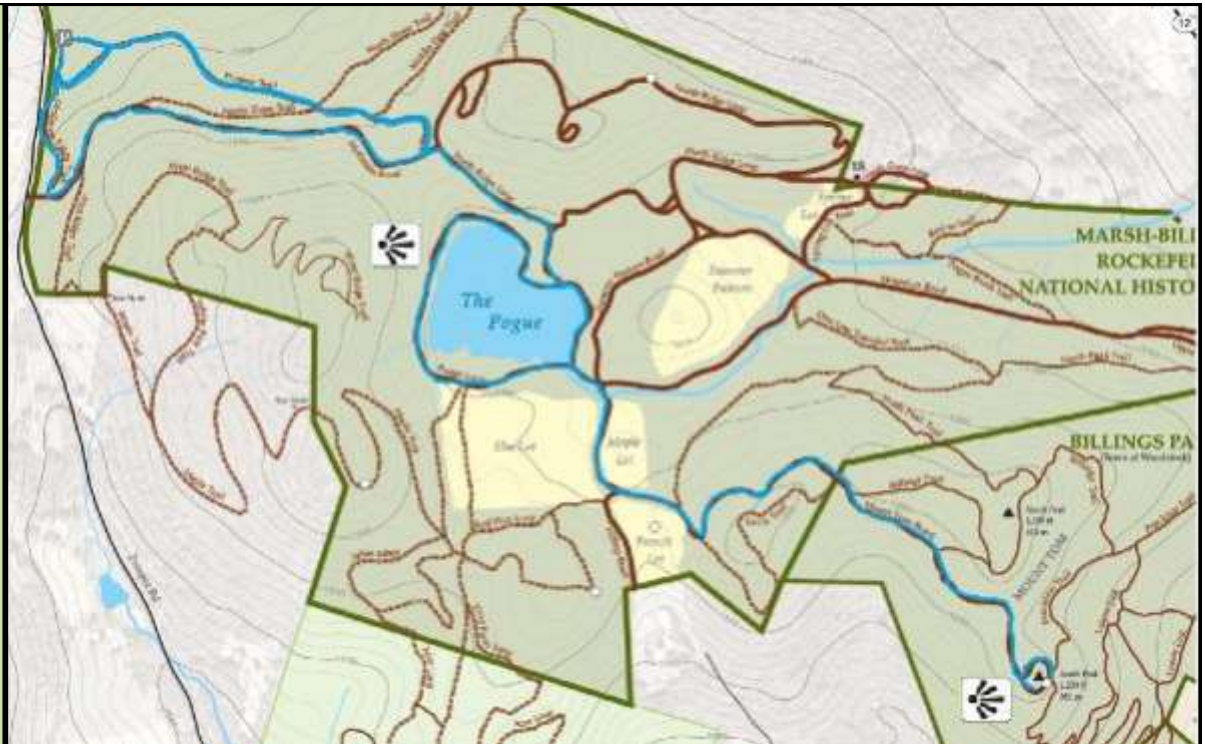
#3 Prosper Road Parking Area

Description

This route to the Pogue and South Peak offers a gradual hike, and a chance to explore the western side of the National Park. From the Prosper Road Parking Area pass the trailhead kiosk, and take the McKenzie Farm Trail to McKenzie Road. Turn left and follow McKenzie Road until it ends, then turn right on North Ridge Loop. Downhill, turn right at an intersection with two large trees. Walk the Pogue Loop until you reach a short section of fence. Take Mountain Road and shortly turn right onto Mount Tom Road. Follow Mount Tom Road to South Peak with its captivating view of Woodstock. If you would like an alternate route to the parking area, turn right off McKenzie Road and follow the steep Prosper Trail to the boardwalk.

History

Remnants of farm buildings may be seen at the junction of the McKenzie farm trail and McKenzie Road. The Prosper Trail passes through red pine plantations planted by Frederick Billings' heirs in 1917.



Fog on the Pogue in Spring (NPS).



Marsh-Billings-Rockefeller National Historical Park

Phone: 802-457-3368

Website: www.nps.gov/mabi

When Walking Woodstock, remember to always:

- Pack out what you pack in (Leave No Trace).
- Bring plenty of water.
- Keep your dog on a leash at all times.
- Please pick up after your dog, and dispose of the waste outside the park.
- Wear comfortable shoes with adequate support.
- Park at designated trailheads and lock your car.
- Choose a route that is within your ability, stay on the trails, and take a trail map with you.
- Let someone know your hiking plans, and stick to them.
- Bring a cellphone in case of emergency.



Marsh-Billings-Rockefeller Visitor Center: (802) 457-3368

Woodstock Police: (802)-457-1420

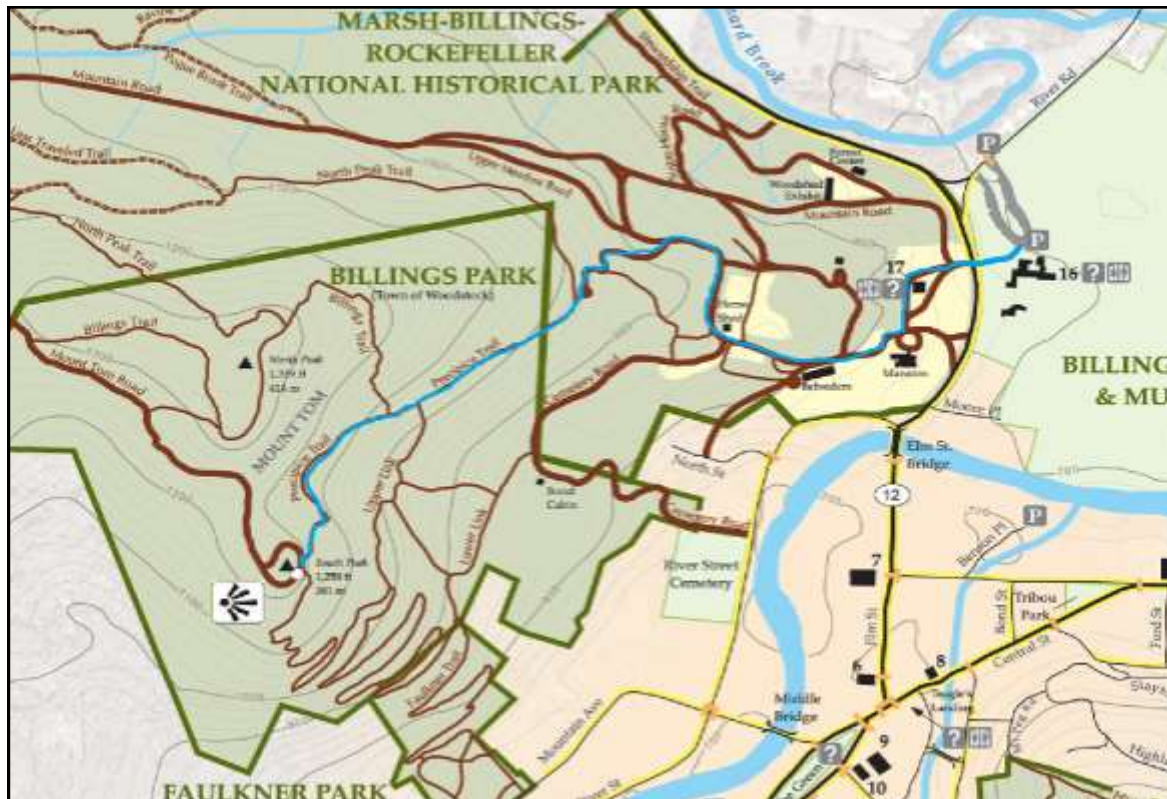
Emergency: Dial 911

DIFFICULT

2.0 miles

#1 Billings Farm & Museum Parking Area

Hike #7- Precipice Trail



Hiking the Precipice Trail (K. Robbins, NPS)



Description

For those seeking a more adventurous hike, the Precipice Trail passes through rugged terrain weaving up the southwestern side of Mount Tom.

To reach this trail, cross Route 12 into the park, and take a left up the Carriage Road. After passing the Mansion and Belvedere (white building) on your left, continue up the hill past the horse shed. Stay on Upper Meadow Road, and take a left at the signpost for the Precipice/North Peak Trail. Continue uphill to a signpost on the left for the Precipice Trail. Proceed carefully through scenic rocky outcroppings to South Peak. Return along the same route.

Do not attempt this hike in the rain or without sturdy footwear. Use the handrail at your discretion—give it a wiggle to ensure it is firm before use.

History

This trail crosses from the National Park into Billings Park, given to the town of Woodstock in 1953 by Mary Rockefeller and her siblings in memory of their mother, Mary Billings French.



Marsh-Billings-Rockefeller National Historical Park

Phone: 802-457-3368

Website: www.nps.gov/mabi

When Walking Woodstock, remember to always:

- Pack out what you pack in (Leave No Trace).
- Bring plenty of water.
- Keep your dog on a leash at all times.
- Please pick up after your dog, and dispose of the waste outside the park.
- Wear comfortable shoes with adequate support.
- Park at designated trailheads and lock your car.
- Choose a route that is within your ability, stay on the trails, and take a trail map with you.
- Let someone know your hiking plans, and stick to them.
- Bring a cellphone in case of emergency.



Marsh-Billings-Rockefeller Visitor Center: (802) 457-3368

Woodstock Police: (802)-457-1420

Emergency: Dial 911