



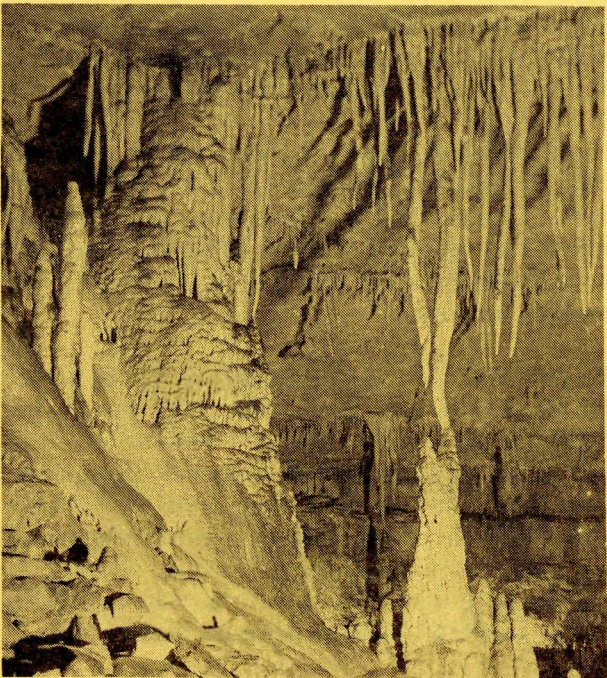
SUMMER 1971



## Visitor Activities

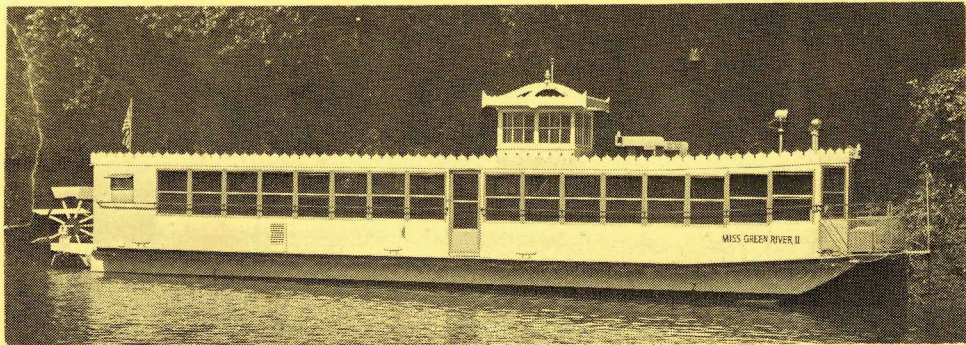
# Mammoth Cave National Park Kentucky

June 13 through September 5  
Central Time Zone



The VISITOR CENTER is open from 7:00 a.m. to 8:00 p.m. Park Rangers on duty. Information, cave tickets, exhibits, and 12 minute orientation program hourly. ALL CAVE TRIPS depart from here.

**See Scenic Green River — In Mammoth Cave National Park**  
Aboard the "Miss Green River II," a 63 ft., Twin diesel powered  
Cruiser; especially built for your comfort and sightseeing pleasure.



**SEATS 122 PASSENGERS. TRIPS AS SCHEDULED ON REVERSE SIDE**  
**"RAIN OR SHINE." REST ROOMS AND REFRESHMENTS ABOARD.**

Approximately one hour and ten minute trip thru scenic areas and natural habitats of the wildlife found in the Park. Wildlife you might see are Deer, Beaver, Wild Turkeys, Snakes, Turtles, and other types of game and birdlife. (over)

# “Scenic Boat Trip Schedule”

## CRUISING DAILY

12:00, 2:00 P. M. and Sunset Cruise at 4:00 P. M.

### Day Trip Tickets

Adult . . . . . \$1.25  
Children under 12 . . . . . .60

### Tickets For Sunset Cruise

Adult . . . . . \$1.35  
Child . . . . . .65

**ALL TICKETS SHOULD BE PURCHASED IN ADVANCE IN VISITORS CENTER.  
CRUISING TIME, APPROXIMATELY ONE HOUR AND TEN MINUTES.**

For Reservations— Call Mammoth Cave 758-2243

(over)

We invite you to explore your park below and above ground and to become better acquainted with the world we live in. All cave trips, nature walks and evening programs are given by National Park Service personnel.

### CAVE TRIPS

**Historic Tour** — This is a self-guiding tour with Park Guides and interpretive signs along the route to help tell you the Mammoth Cave story. You may enter the cave between 8:30 a.m. and 4:30 p.m. Approximate walking distance 2 miles, price \$1.50 per person age 16 and over. Rest room available. Largest cave rooms, Indian Mummy, War of 1812 mining operation.

**Frozen Niagara Tour** — Trips depart at 8:30, 9:30, 11:00 a.m. and 12:15, 1:30, 2:45, 4:00 and 5:15 p.m. Price \$1.50, persons under 16 pay a 50c bus fee only. Length of tour about one hour. Stalactites and stalagmites. Limited to 160 persons per tour.

**Scenic Tour** — Trips depart at 8:00, 9:15, 10:30, 11:45 a.m. and 1:00, 2:15 p.m. Price \$2.50, persons under 16 pay a 50c bus fee only. Lunch is available in the Snowball Room one hour after start of tour. Length of tour is four hours, rest rooms available. Gypsum, long winding passages, exits through Frozen Niagara. A strenuous four mile walk with numerous hills to climb. Limited to 240 persons per tour.

**Lantern Tour** — This special, unique three mile tour by lantern light departs at 8:00, 10:00 a.m., 12:00 noon and 2:00 p.m. Rest room not available. Price \$2.00 for all persons which

includes transportation. Length of tour 3 hours. Travertine deposits, historic features. Limited to 40 persons per tour.

### NATURE WALKS

Daily at 9:00 a.m. and 2:00 p.m. Meet in amphitheater for morning walk, meet in picnic area for afternoon walk. Join a Park Naturalist for a two hour walk through a hardwood forest.

### EVENING PROGRAMS

Illustrated slide programs are given nightly at 8:30 p.m. in the amphitheater. Check campground bulletin boards and the Visitor Center Information Desk for topics.

### OTHER ACTIVITIES

**Cave Island Nature Trail** — This self-guiding nature trail begins and ends near the Historic Cave Entrance. It is a woodland trail one mile in length. Follow the path down the hill between the Visitor Center and the Hotel.

**Joppa Ridge Motor Nature Road** — A two mile one-way primitive gravel road that begins off the road to the Green River. Obtain a guide leaflet at the Visitor Center or at the beginning of the road.

**Turnhole Bend Trail** — This scenic trail begins at the parking area on Kentucky Route 70 West. A pleasant walk will take you to overlooks along the Green River.

**Cedar Sink Trail** — This mile and a half walk begins at the parking area on Kentucky Route 422 and leads to a large sinkhole. Other trails are shown on the map in the park folder.

**Fishing** — is permitted in Mammoth Cave National Park without a license.

**Hunting** — is prohibited.

**Camping** — \$3.00 a night per site. The campground is open the year around. Each site has a picnic table and a fireplace. There are no trailer hookups. A comfort station is located in each camping loop and one trailer sewage disposal station is available. Camping is on a first-come basis, (NO RESERVATIONS) and is permitted only in designated sites. Showers, self-service laundry, and the campers supply store are located near the campground.

National Park Concessions, Inc., Mammoth Cave, Kentucky, operates HOTEL ACCOMMODATIONS in the park throughout the year. Dining room and coffee shop operate all year.

Mammoth Cave National Park is administered by the National Park Service, U. S. Department of the Interior.

*“We abuse land because we regard it as a commodity belonging to us. When we see land as a community to which we belong, we may begin to use it with love and respect.”*

Aldo Leopold  
A Sand County Almanac