

The Services and Facilities of Mammoth Cave Hotel

MAMMOTH CAVE HOTEL - All of the conveniences of a modern motor-hotel are provided guests at this facility located near the historic entrance to Mammoth Cave.



The Hotel complex is connected to the National Park Visitor Center by an arched concrete bridge. Several mobility impaired rooms are available.

SUNSET POINT MOTOR LODGE - The Lodge is located in a picturesque setting at the forest's edge not far from the Heritage Trail that leads to the Sunset Point Overlook.

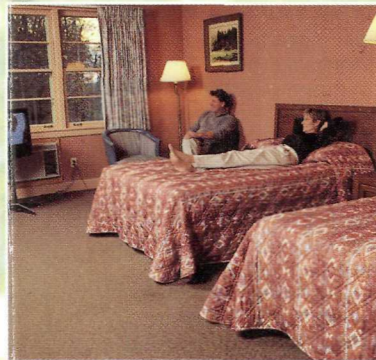
HOTEL COTTAGES - Not far from the main Hotel complex are the secluded Hotel Cottages nestled under tall trees. Fully furnished and comfortable, the Cottages are easily accessible to the Hotel's dining and other facilities. (Available mid-March through October).



WOODLAND COTTAGES - Situated in a grove of trees a short distance from the Hotel, these single, two, three and four bedroom cottages offer no-frills lodging typical of the early days of the Park. (Available May 15th through October 1st.)

GROUP MEETING FACILITIES - Private meeting and dining rooms for up to 160 guests. Ideal for group meetings and conferences, these facilities are available mid-August through mid-June and offer a retreat-environment for organizations and corporations.

SERVICE CENTER - Located at the main Hotel access road, the Service Center is convenient to the camping area, Hotel complex and Visitor Center. Gas, auto supplies, groceries, self-service laundry, camping and picnic supplies, and showers are available. A U.S. Post Office is on site. Open seasonally from Memorial Day weekend to Labor Day. Open on weekends from Easter to Memorial Day and from Labor Day to mid-October.



TENNIS AND SHUFFLEBOARD COURTS - These are adjacent to the Hotel.

For Reservations or Information on Mammoth Cave Hotel, write:

NATIONAL PARK CONCESSIONS, INC., P.O. Box 27, Mammoth Cave, KY 42259-0027. Or call: 270-758-2225. Fax: 270-758-2301.

Nearby Attractions and Facilities!

GOLF - Just minutes of scenic driving away from Mammoth Cave Hotel are three 18-Hole Golf courses. For information, call: **Diamond Caverns, 270-749-2891; Park Mammoth Resort, 270-749-4101; Shady Hollow, 270-286-6165.**

NATIONAL CORVETTE MUSEUM - Located in Bowling Green, Kentucky, Exit 28 off I-65. For information, call: **1-800-538-3883.**

NEARBY - See the myriad attractions and shopping opportunities in Cave City and Horse Cave.



HOTEL DINING ROOM AND COFFEE SHOP - Hospitality and superb southern regional foods are standard fare in our dining facilities. The Dining Room serves three meals every day from 7:00 AM to 7:30 PM.

GIFTS AND CRAFTS SHOPS - Rock specimens, souvenir books, film and Mammoth Cave logo clothing and merchandise and other memorabilia are in our gift-souvenir shop. For more upscale shopping, visit our Kentucky Arts and Crafts Shop off the main lobby, featuring varied and exciting Kentucky-crafted creations.

Mammoth Cave National Park

VISITOR ACTIVITY SCHEDULE



A scene along the Heritage Trail.



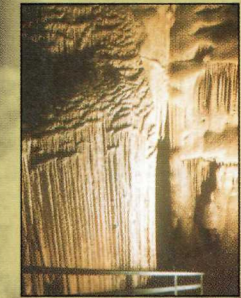
Miss Green River II takes visitors on river excursions.



Mammoth Cave National Park

VISITOR ACTIVITY SCHEDULE

KENTUCKY



EXIT 48 **65** EXIT 53

MAMMOTH CAVE NATIONAL PARK
RANGER-LED ACTIVITY SCHEDULE

Fall 1999

September 7 – October 31, 1999

Weekends

Historic Tour	\$7	9:30, 10:00
Frozen Niagara Tour	\$7	11:15, 2:00
Travertine Tour	\$6.50	9:00, 4:30
Violet City Lantern Tour	\$8.25	10:00
Great Onyx Tour	\$8.25	2:30
Grand Avenue Tour	\$16	11:00, 12:00
Wild Cave Tour	\$35	10:00
Introduction To Caving	\$18	1:00
Mobility Impaired Tour	\$6.50	10:15
Discovery Tour	\$3.50	As visitation warrants

Weekdays

Historic Tour	\$7	9:30, 3:15
Frozen Niagara Tour	\$7	11:15, 2:00
Travertine Tour	\$6.50	9:00, 4:30
Violet City Lantern Tour	\$8.25	10:00
Great Onyx Tour	\$8.25	2:30
Grand Avenue Tour	\$16	12:00
Mobility Impaired Tour	\$6.50	10:15
Discovery Tour	\$3.50	As visitation warrants

All tours discounted for youth 12 & under and for Golden Age Passport holders, except Introduction to Caving, which is \$11 for youth and Golden Age Passport holders. Wild Cave Tour is for persons 16 years & up, Introduction to Caving is for persons 10 and up, Grand Avenue Tour is for persons 6 and up.

Visitor Center Hours: 8 am - 6 pm Central Time

UNDERGROUND TOURS

Historic Tour

2 hours, 2 miles (strenuous). Visit the cave passages and learn about the rich human history that made Mammoth Cave famous. View artifacts left by native Americans, discover ruins of mining operations, and see evidence of early visitors, explorers, and workers at Mammoth Cave. Must descend and climb one stairway with more than 60 steps and must climb more than 130 steps on a steel tower. If you fear heights or close places and/or cannot climb steps, do not take this tour. Limit: 120

Frozen Niagara Tour

2 hours, ¾ mile (strenuous). Descend in search of the spectacular. Ride a bus to the entrance, explore huge pits and domes and view decorative dripstone formations, including stalactites and stalagmites. Must descend approximately 300 steps and navigate steep terrain. If you fear heights or close places and/or cannot climb steps, do not take this tour. The Travertine Tour route is included in this more strenuous tour. Restrooms not available. Limit: 120

Travertine Tour

1-1¼ hours, ¼ mile (easy). Ride a bus to the Frozen Niagara entrance and view some of the cave's finest geologic artistry, including stalactites, stalagmites, pits and domes. Must climb 18 steps; an additional 98 steps are optional. Designed for those who experience difficulty in walking, and those with infants and toddlers. Not handicap accessible. Limit: 40

Violet City Lantern Tour

3 hours, 3 miles (strenuous). Follow the path of the cave's famous explorers along a nostalgic journey into Mammoth Cave's historic past. By the light of coal-oil lanterns, view a saltpeter mining operation, evidence of prehistoric exploration, historic tuberculosis hospital ruins, and some of the largest rooms and passageways in the cave. The first half-mile follows the Historic Tour route. Do not bring flashlights. Must be at least 6 years old. Limit: 60

Grand Avenue Tour

4½ hours, 4 miles (very strenuous). Experience the cave's geologic variety. Hike through avenues representing four separate aspects of cave formation and discover why some of these passages were originally named "Grand Avenue." A short bus ride to Carmichael Entrance begins the trip. Consider your physical limitations – must ascend and descend steep switchback trails and more than 500 stairs. Restrooms available. Scheduled 35-minute lunch stop at Snowball Room – lunch may be purchased at an additional charge. Age restriction: **children must be at least 6 years old to take the Grand Avenue Tour.** Overlaps a portion of the Frozen Niagara and Travertine tours. Limit: 120.

Wild Cave Tour

6 to 6½ hours, 5½ miles (extremely strenuous). Must be 16 years or older to participate. (Be prepared to show proof of age.) Visitors 16-17 must be accompanied by an adult 18 years or older. Chest size must not exceed 44 inches – anyone larger will not fit through the tight spaces. Crawl, climb, and squeeze through small passages off traditional tour routes. Helmets and lights provided. Kneepads available for this tour, but you may bring your own – rollerblade-type or hard plastic kneepads not allowed. **High-top (over-the-ankle) lace-up boots, with lug or deeply-treaded soles, are required.** Improper footwear will result in denied access. Protective gloves and long pants recommended. Visitors should bring lunch and water in a small "fanny" pack. Restrooms available. **Visitors with known health problems or other medical limitations should not attempt this tour.** Visitors with tickets being held at "Will Call" must check in 30 minutes prior to departure or your tickets will be released for purchase. Limit: 14

Introduction to Caving

3 to 3½ hours (very strenuous). **For ages 10 and older!** Designed for youths, adults, and families to learn and explore the basics of responsible caving. Visit passages off traditional tour routes. Stooping, bending and crawling. Chest size must not exceed 44 inches; anyone larger will not fit through the tight spaces. Helmets and lights provided. Bring your own knee pads; no rollerblade-type or hard plastic kneepads allowed. Long pants and high-top (over-the-ankle) shoes or boots, with lug or deeply-treaded soles, are required. Improper footwear will result in denied access. Gloves recommended. Restrooms not available. Ages 10-17 must be accompanied by an adult 18 years or older. Visitors with tickets being held at "Will Call" must check in 30 minutes prior to departure or your tickets will be released for purchase. Limit: 20

Mobility Impaired Tour

1 mile, 1¼ hours (easy). The only cave tour designed for visitors in wheelchairs and for physically impaired visitors unable to participate in other cave tours. Limited transportation is available; participants may need to provide their own transport to the entrance. Visitors with motorized chairs must provide their own transport. Ride a van to the elevator entrance, descend, and see tubular passages with delicate gypsum minerals encrusting the walls. Two wheelchairs available, first-come, first-served. Due to the use of a single elevator, the tour may be cancelled for routine or emergency maintenance. Limit: 16

Great Onyx Tour


2¼ hours, 1 mile (moderately strenuous). Even before the creation of this national park, the private owners of Great Onyx Cave understood the need for stewardship. Join a park ranger on a visit to Flint Ridge and Great Onyx Cave and learn how past and present ways of treasuring these resources have come together. Must climb and descend 20 stairs and several hills. Use lanterns to explore this beautiful and varied cave, which features stalactites, stalagmites, helictites, and "soda straw" stalactites. No flashlights. Limit: 40.

For Reservations

Please note that Mammoth Cave National Park offers a number of guided tours, both on the surface and underground. Demand is high for these popular activities — tours can, and do, sell out. You may reserve tickets in advance for **cave tours** by calling the National Park Reservation Service at (800)967-2283. On the 15th of each month, you may purchase tickets for an additional month of cave tours. For instance, on April 15 you will have the choice of tours on any date through July 15. Tours may be reserved by telephone up to 24 hours in advance. Call 9:00 am – 9:00 pm Central Time, 7 days a week

Phone: (800)967-2283
Fax: (301)722-1174
TDD (hearing impaired): (888)530-9796
International: (301)722-1257

Payment

 Checks and money orders through deferred payment only. Visitors who reserve using deferred payment must do so no less than 20 days in advance of their arrival at the park.

Cancellation

All changes of reservation will be considered a cancellation and charged \$1.50 per tour ticket. Cancellations made less than 24 hours in advance of the tour will not receive a refund.

Location

Mammoth Cave National Park is located 90 miles north of Nashville, TN and 90 miles south of Louisville, KY. **Traveling south**, leave Interstate 65 at Cave City, exit 53. Follow the signs 9 miles to the park Visitor Center. **Traveling north**, leave Interstate 65 at Park City, exit 48. Follow the signs eight miles to the park Visitor Center.

Tips

When planning a cave trip, **consider your physical limitations realistically.** Park rangers **do not recommend most cave trips for visitors who fear heights or close places and/or cannot climb steps.** In addition, plan your caving attire so that you'll be safe and comfortable. Hard-packed dirt trails can be somewhat rough and uneven and may be wet and slippery. On most cave tours, you'll encounter numerous stairs and some steep inclines. Therefore, **durable footwear suitable for walking is essential.** In most areas of the cave, you'll be most comfortable if you **wear long pants and take a sweater or jacket with you.**

Discovery Tour

¾ hr. minimum, ¾ mile (moderate). Visit one of the largest rooms in Mammoth Cave, explore a large canyon passage, talk with park rangers and learn about 19th Century saltpeter mining operations and the geologic origins of Mammoth Cave. Must descend and climb one stairway with more than 60 steps. To get the full picture, hike the River Styx Spring Trail or the Green River Bluffs Trail in conjunction with this tour. **No tour limit. Self-paced tour. Offered when visitation warrants.**

For more information, find Mammoth Cave on the World Wide Web:
<http://www.nps.gov/mac/macahome.htm>