

SITE MAP



The Manhattan Project was an unprecedented, top-secret program implemented in the United States during World War II to design and build an atomic bomb. The Manhattan Project National Historical Park, created in November 2015, is composed of the three principal locations where work was completed as part of the Manhattan Project: Oak Ridge, Tennessee; Hanford, Washington; and Los Alamos, New Mexico.

for the top-secret work. The National Park's Hanford Unit includes the B Reactor National Historic Landmark, which produced the material for the Trinity test and plutonium bomb; the 1916 Hanford High School in the Town of Hanford and Hanford Construction Camp Historic District; Bruggemann's Agricultural Warehouse; the White Bluffs Bank; and the 1908 Hanford Irrigation District Pump House. These locations provide visitors a glimpse into the history of the Hanford area before the arrival of the Manhattan Project.

The Hanford Engineer Works was built to create large quantities of plutonium at a roughly 600-square mile site along the Columbia River in Washington State. More than 51,000 workers came together at Hanford to build and operate a massive industrial complex to fabricate, test, and irradiate uranium fuel and chemically separate out plutonium. The Hanford landscape also represents one of the first acts of the Manhattan Project – the condemnation of private property and eviction of homeowners and American Indian tribes to clear the way

NATIONAL PARK TOURS ARE AVAILABLE!

For more information, please visit:
manhattanprojectreactor.hanford.gov or
call (509) 376-1647



1

BRUGGEMANN'S WAREHOUSE

The warehouse building at Bruggemann's Agricultural Complex is the only remaining structure on the 540-acre farm property that also contains the foundations of a processing facility, grain silo, outbuildings, and vast irrigation lines of various types. The structure is part of one of the few intact independent farming operations from the pre-war era in the Northwest and reflects the development of various irrigation techniques over the decades.



2

B REACTOR

B Reactor is the first full-scale production reactor in the world and produced the plutonium used in the Trinity Test and the Fat Man bomb dropped on Nagasaki, Japan. The reactor's core consists of a "pile" of graphite blocks which held uranium fuel slugs and served as a neutron moderator, sustaining a nuclear chain reaction. B Reactor was named a National Historic Landmark in 2008.



3

ALLARD PUMP HOUSE

The pump house was built by the Hanford Irrigation and Power Company to raise Columbia River water more than 50 feet to a 36-mile irrigation network for farms in the Priest Rapids Valley. The area newspaper called the project "the largest pumping plant in the world." It enabled large scale farming and orchards in the area, which drove the economies of the towns of Hanford and White Bluffs.



4

WHITE BLUFFS BANK

The White Bluffs Bank building is the only remaining structure of the pre-Manhattan Project community of White Bluffs, Washington. When first constructed, operators claimed it was robbery-proof, though it was robbed twice in its operating history due to an easily breached wooden roof. The building is surrounded by original sidewalks, foundations from other nearby businesses, and the remnants of original vegetation.



5

HANFORD HIGH SCHOOL

Hanford High School was a social focal point of the community of Hanford, Washington. Condemned as part of the government's taking of land for the Manhattan Project, it was used for a short time by the Army during Hanford construction. This park location also includes a portion of the Hanford Construction Camp, where more than 50,000 workers lived in barracks and trailers during the construction of the Hanford Engineer Works.

National Park Service
www.nps.gov/mapr

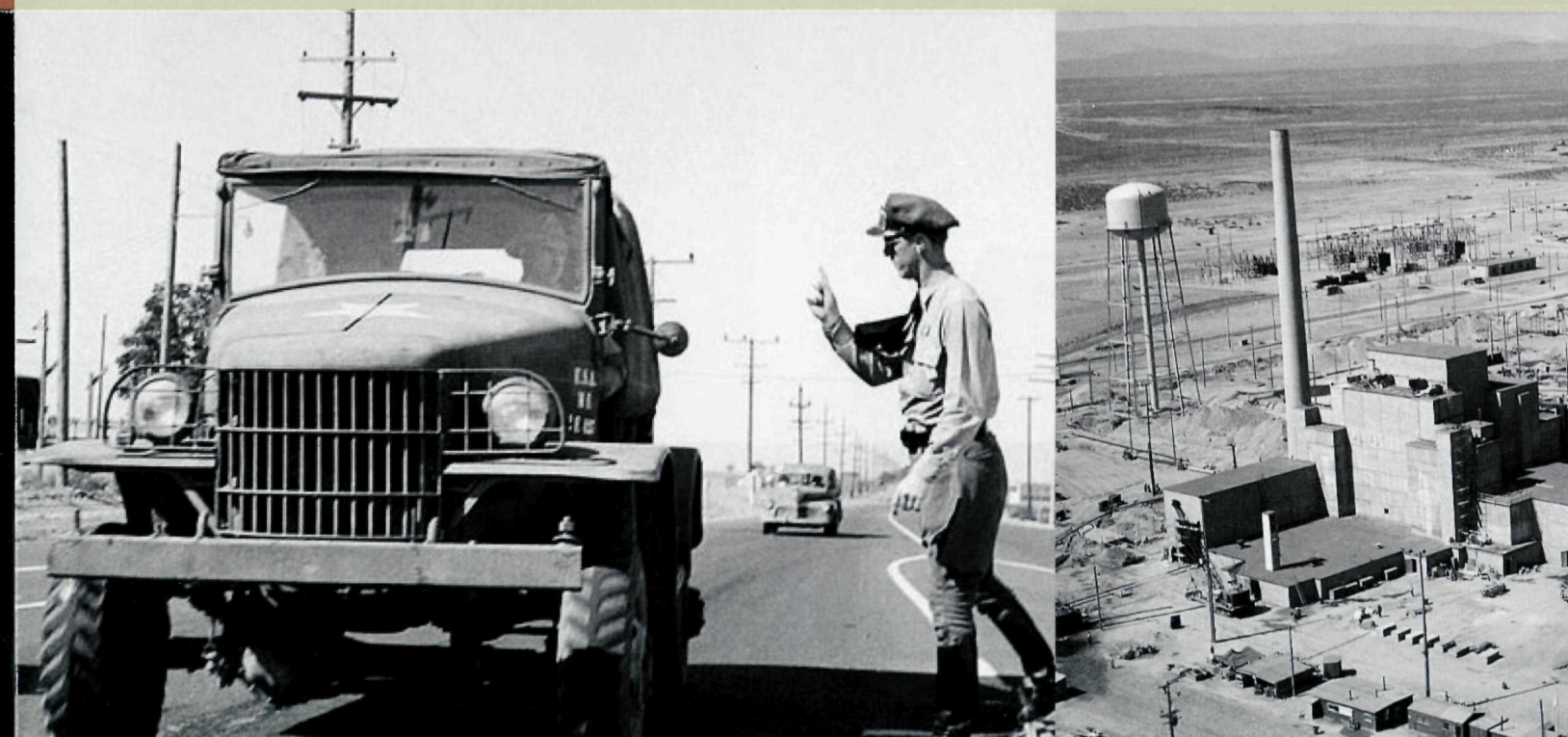
DOE Manhattan Project
www.energy.gov/manhattan

National Park Tours
manhattanprojectreactor.hanford.gov

B Reactor Museum Association
www.b-reactor.org

Visit TRI-CITIES
www.VisitTRI-CITIES.com

Hanford History Project
www.hanfordhistory.com

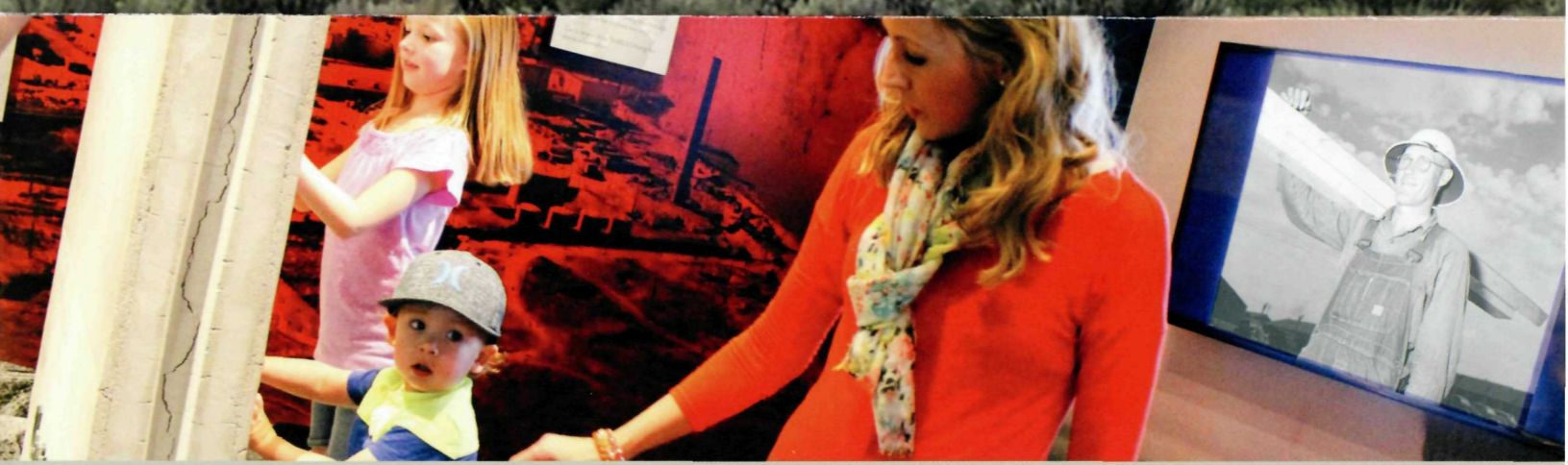




Courtesy of TRIDEC - Chad Erlend Photography



The Manhattan Project National Historical Park tells the story of the people, the events, and the science and engineering that led to the creation of the atomic bombs that helped bring an end to World War II. The park allows visitors to explore how the creation of these weapons changed the United States' role in the world community. The Park also addresses the consequences and legacy of the Manhattan Project, and how it has shaped the world in which we live.



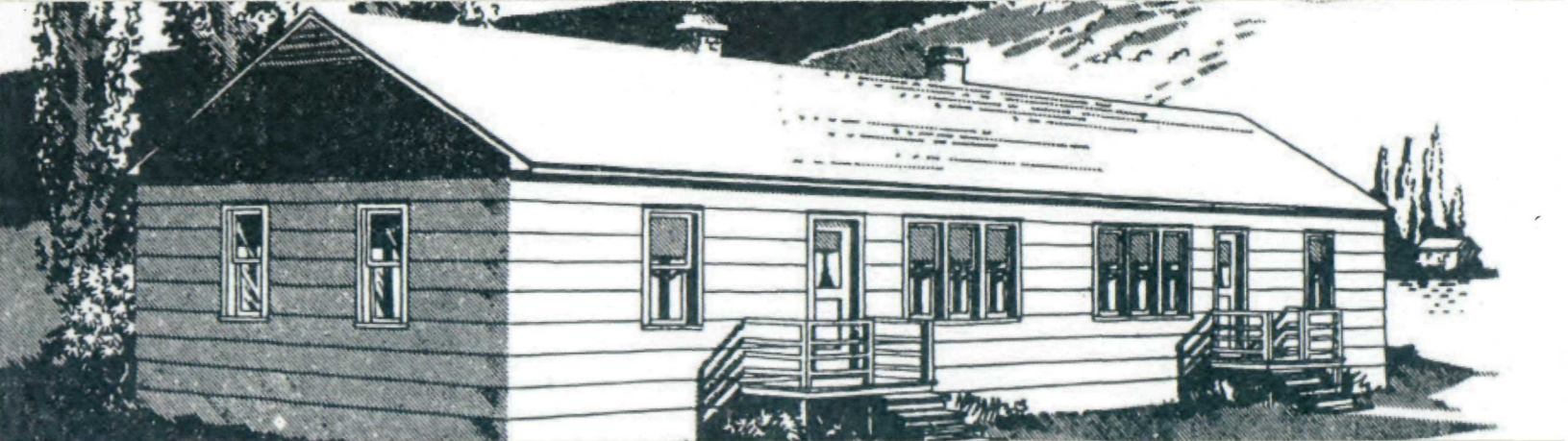
THE REACH

THE REACH is a storytelling center: part museum, part interpretive center, part community gathering place, which serves as a guide to inspire learning and celebrate the natural, scientific and cultural history of the Tri-Cities' region. The museum features a gallery focused on the Manhattan Project and Hanford Engineering Works crucial role in ending World War II. www.visitthereach.org / (509) 943-4100



PACIFIC NORTHWEST AVIATION MUSEUM

PACIFIC NORTHWEST AVIATION MUSEUM is a decommissioned air traffic control tower that once served as a training facility for World War II pilots. The control tower is being converted into a museum dedicated to local aviation history. www.savetheoldtower.com / (509) 521-7117



HISTORIC ALPHABET HOMES

In 1943, the Army Corps of Engineers gave Spokane architect Albin Pherson less than 90 days to design a government-owned community for Manhattan Project workers and their families. Each housing plan was given an alphabet letter for ease in identification. Nearly 5,000 homes were built and most remain, some of which are included in the Gold Coast Historic District. Many historically prominent engineers of the Corps were recognized by naming streets after them in the wartime Richland town site. <https://www.ci.richland.wa.us/departments/community-development-services/redevelopment/historic-preservation>



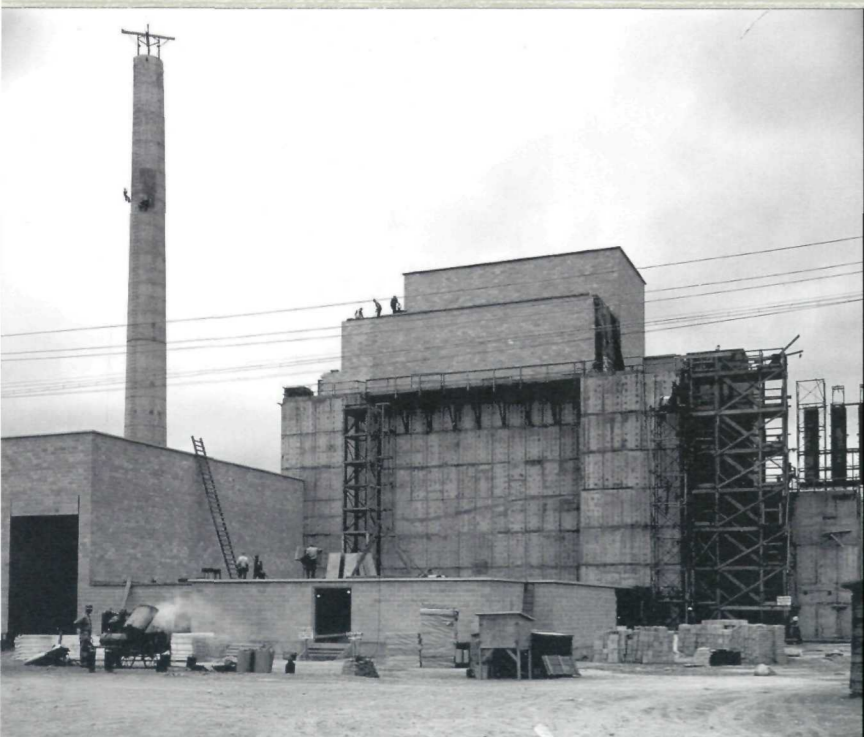
WORLD WAR USS TRITON SAIL PARK

USS TRITON SAIL PARK is home to the sail and conning tower of the USS Triton, a United States Navy Radar Picket submarine and the first vessel to circumnavigate the world submerged. For tour information: www.portofbenton.com / (800) 628-PORT



TRI-CITIES VISITOR INFORMATION

The Tri-Cities is the gateway to the Manhattan Project National Historical Park. For more information about the Tri-Cities region (Kennewick, Pasco, Richland and West Richland) and additional attractions, including hotels, golf, wineries, water recreation and more, contact Visit TRI-CITIES at: (509) 735-8486 / (800) 254-5824 or log on to www.VisitTRI-CITIES.com.



National Park Service
www.nps.gov/mapr

DOE Manhattan Project
www.energy.gov/manhattan

National Park Tours
manhattanprojectreactor.hanford.gov

B Reactor Museum Association
www.b-reactor.org

Visit TRI-CITIES
www.VisitTRI-CITIES.com

Hanford History Project
www.hanfordhistory.com

