



Where is your food right now?

What attracts bears?

Food & drinks
(including unopened or empty cans & bottles, and water containers)

Toiletries & other scented items
(including toothpaste, soap, wipes, sunscreen, candles, lighter fluid, insect repellent, cleaning sponges, pots, pans, eating utensils, etc.)

Ice chests

Trash & recycling

How should I store my food?

Keep all food secured and covered in a hard-side, locked vehicle, unless you are using the food.

Keep your food within arm's reach if the food is not in your vehicle.

Do not store food, toiletries, or other scented items in your tent or soft-sided pop-up trailer.

If you fail to store your food properly, your food may be impounded, you may be cited and/or your camping permit may be revoked.

If you see a bear in camp, immediately yell at the bear and make as much noise as possible to scare it away (but do not chase the bear). Report sightings to camp store.



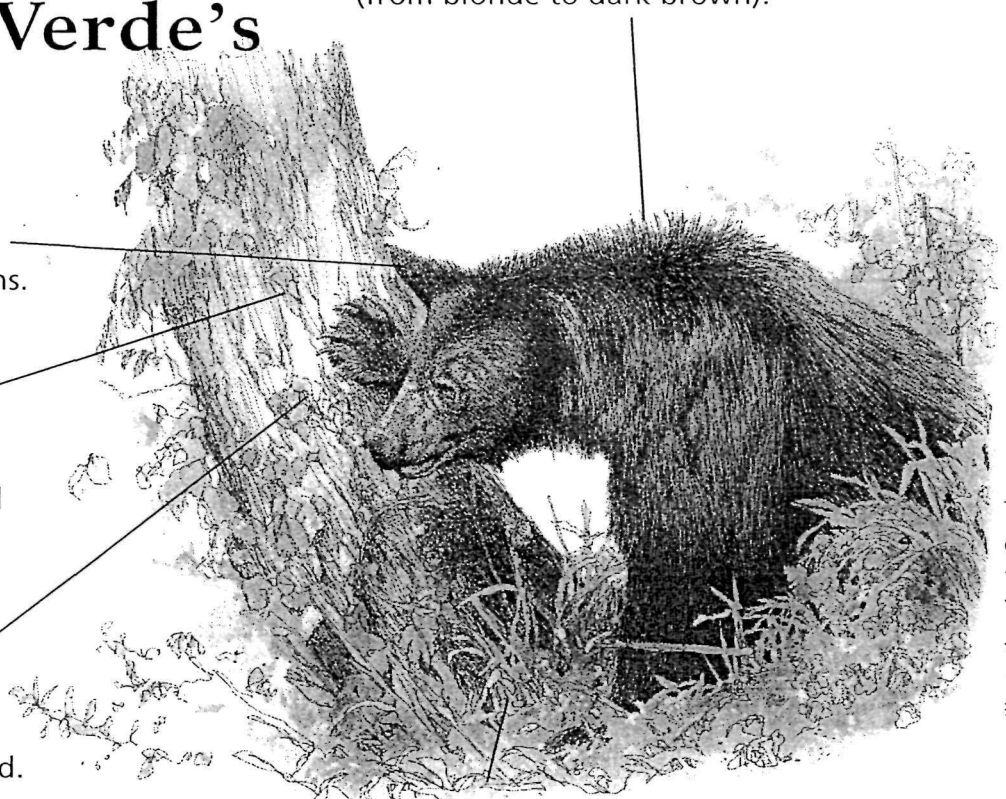
Fascinating Facts about Mesa Verde's Black Bears

Rarely black, but usually some shade of brown (from blonde to dark brown).

Incredibly smart and much more curious than their relatives, including dogs, cats, and raccoons.

Uses of claws: climbing trees and ripping open logs for grubs.

Sense of smell is several times better than that of a bloodhound.



Padded, furry paws make bears nearly silent walkers.