

National Park Service | U.S. Department of the Interior

Cultural Resources, Partnerships, and Science



Mission 66-Era Facilities Program Comment

Sample Images for Consultation





National Park Service
Bureau of Land Management
U.S. Department of the Interior

Visitor Center

Craters of the Moon
National Monument
and Preserve



HEADQUARTERS
GLACIER NATIONAL PARK



WOMEN

CAUTION
FLOOR
SLIPPERY
WHEN WET



USE RESTROOMS 1/2 MILE FROM THE
TRAIL TO THE RESTROOMS AND NO WATER
SERVICES. SERVICED WITH











Shenandoah National Park

Entrance Fee		Annual Passes		Lifetime Passes	
Private Vehicle	\$30	Shenandoah National Park	\$55	Emergency Service	\$100
Motorcycle	\$25	Interagency Annual	\$50	Emergency Access	FREE
Per Person	\$15				

Clearance 11'

Shenandoah NP

SHENANDOAH NATIONAL PARK

SHENANDOAH NATIONAL PARK

Campgrounds

Per Person	\$10
Per Vehicle	\$10
Per Horse	\$10
Per Dog	\$10
Per Pet	\$10

Lodges

Per Person	\$15
Per Vehicle	\$15
Per Horse	\$15
Per Dog	\$15
Per Pet	\$15







NATIONAL PARK SERVICE
HEADQUARTERS





PLUMBING SHOP



ELECTRICAL SHOP











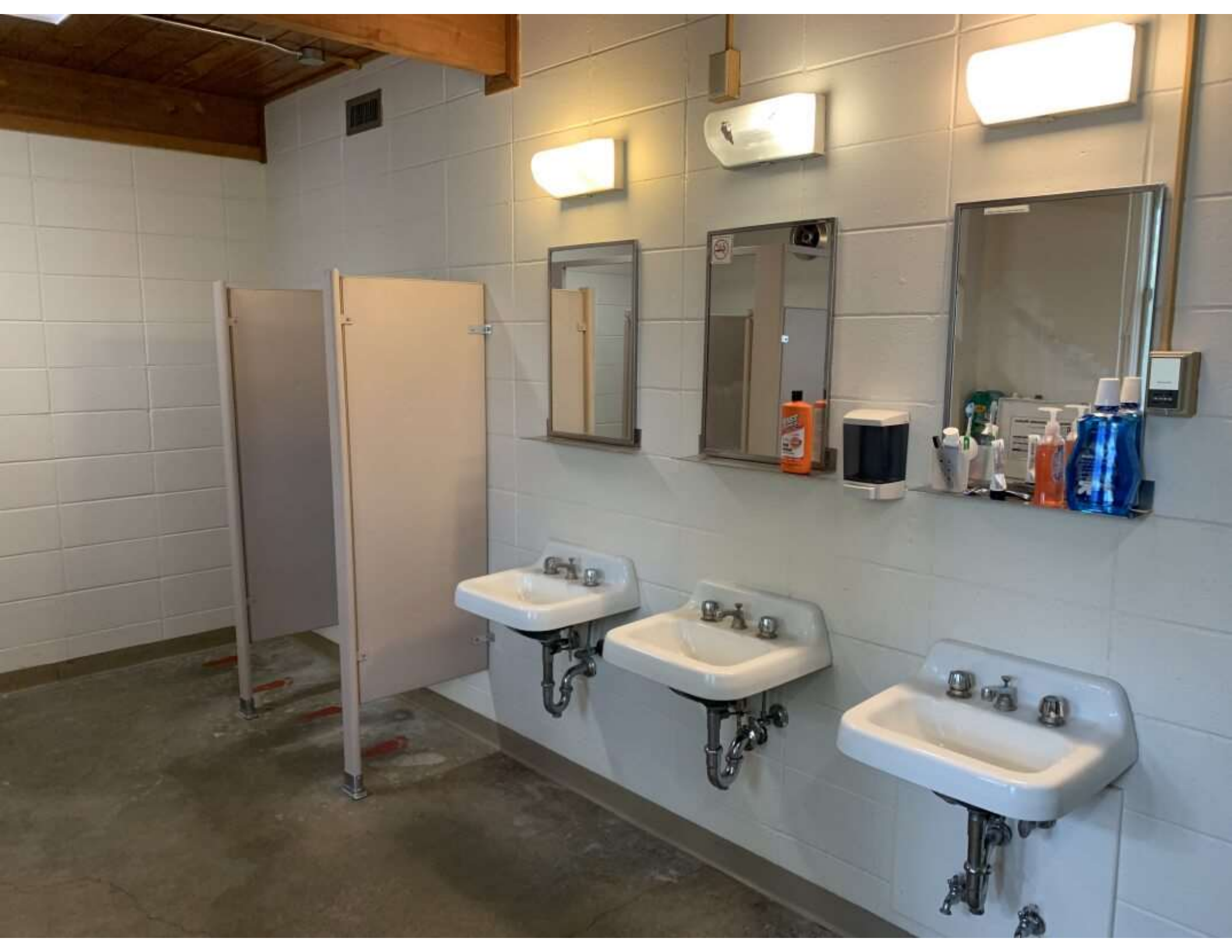
8





PRIVATE
RESIDENCE

125 ROAD
PINE GROVE





















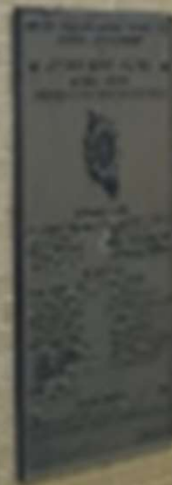








VISITOR CENTER











Cultural Resources, Partnerships, and Science



National Park Service
U.S. Department of the Interior

**VISIT
YOUR NATIONAL PARKS
IN 1966
50TH ANNIVERSARY**

