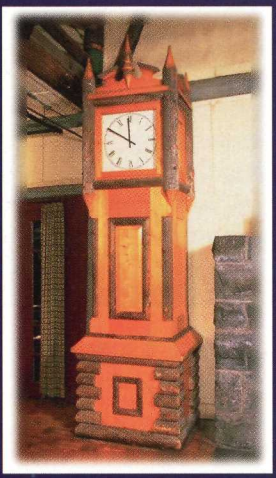


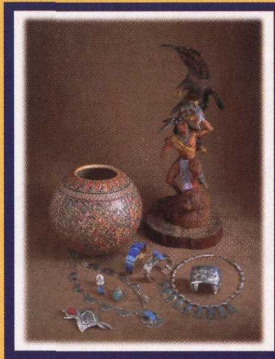
**100th Anniversary**  
1899 - 1999!



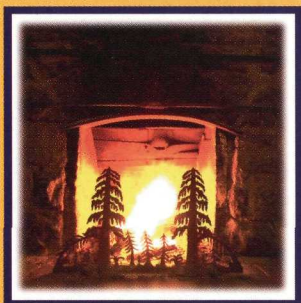
Paradise Inn Great Hall



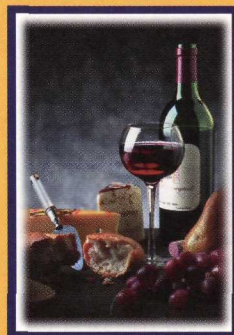
Hans Fraehnke's  
14ft. grandfather clock



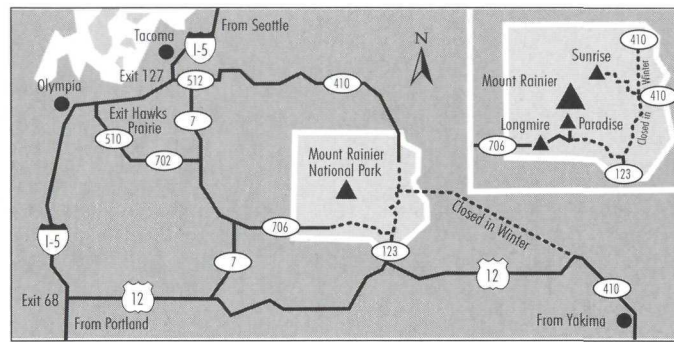
Diverse shopping  
including Native American  
Indian Crafts



The "Alaskan Cedar  
Tree" fireplace

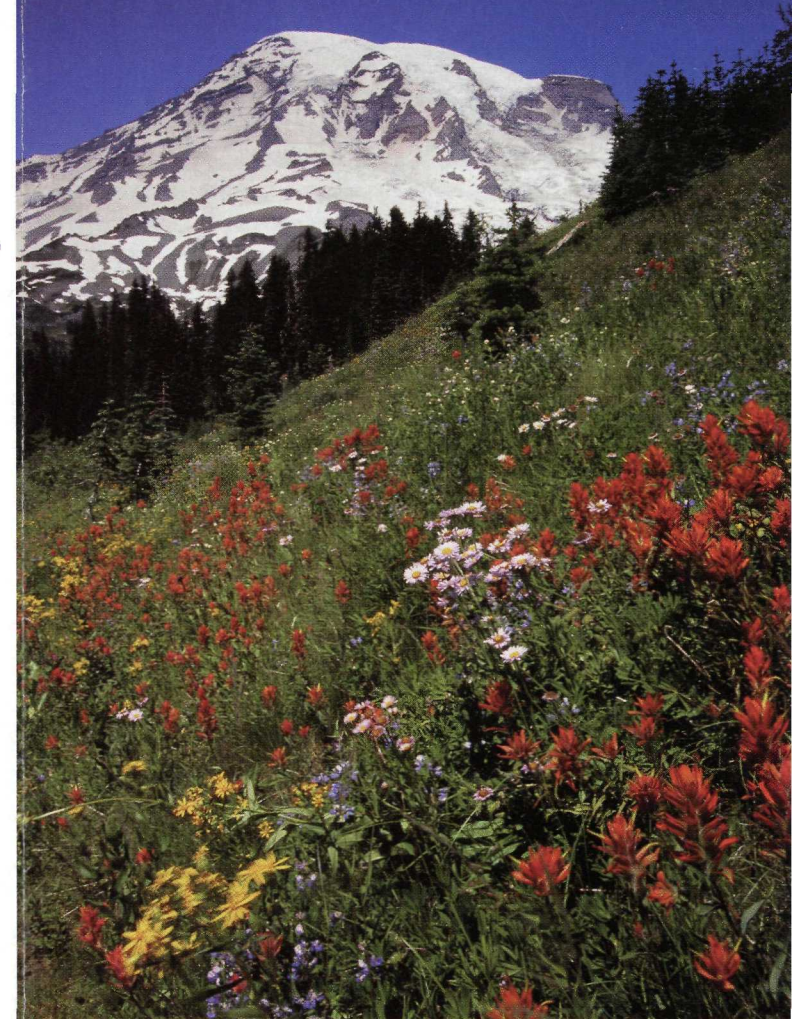


Food for body  
and soul




# MT. RAINIER NATIONAL PARK

WASHINGTON



Mount Rainier - Guest Services  
P.O. Box 108, Ashford, WA 98304

Paradise is not just a myth...  
it's a destination!

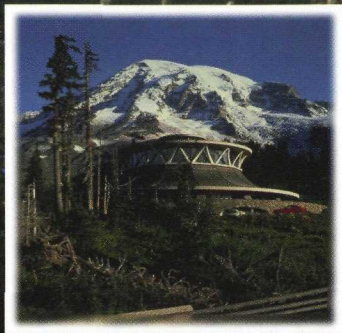
by  Guest Services®



National Trust  
for Historic Preservation

An authorized concessionaire of the National Park Service.





### ESCAPE...

Experience the majestic views and adventure that only Mt. Rainier National Park and its 14,411 feet can offer. Included in the prestigious Historic Hotels of America register, two National Historic Landmark Inns provide a rustic retreat with antique Northwest decor. Paradise Inn was built in 1917 using Alaskan Cedar charred by a fire and taken from the nearby Silver Forest. Hand-hewn furniture, tables, piano, and grandfather clock still grace the lobby of this "Great Lodge". The National Park Inn was moved to its present location in 1920 and was rebuilt after a fire destroyed much of the original building in 1926. Park information and historical displays can be seen at the Longmire Museum or the visitor centers at Ohanapecosh, Sunrise, and Paradise.

### PARADISE INN

Open May 15 - October 4, 1998

Built in 1917, our historic guest lodge features 117 rooms, the Paradise Inn Dining Room, Glacier Lounge, and gift shop offering Native American crafts.

Elevation 5,400 feet

Room: 1-2 persons daily	\$69
Room with bath: 1-2 persons daily	\$98
Two-room unit with bath: 1-3 persons daily	\$125
Suite with sitting room: 1-3 persons daily	\$131
Crib & each additional person	\$10
Handling fee: reservation changes, cancellation*	\$10

### NATIONAL PARK INN

Open Year Round

The Inn offers 25 guest rooms, a full service restaurant and gift shop. Its cozy lounge for overnight guests features an oversized stone fireplace.

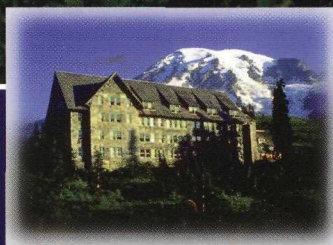
Elevation 2,700 feet

Cross-country skiing and snow shoe rentals available. Guided tours on weekends and holidays (seasonal).

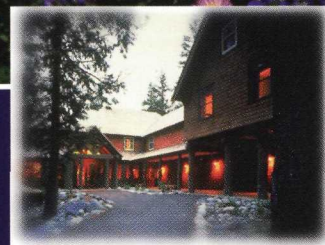
Room: 1-2 persons daily	\$66
Room with bath: 1-2 persons daily	\$91
Two-room unit with bath: 1-3 persons daily	\$123
Crib & each additional person	\$10
Handling fee: reservation changes, cancellation*	\$10



Ground transportation: Grayline 800-426-7532  
 Rainier Shuttle 360-569-2331  
 Scenic Tours 888-293-1404  
 Outdoor Activities: RMI Climbing School  
 summer 360-569-2227, winter 253-627-6242.



Paradise Inn



National Park Inn

### FOOD FOR BODY AND SOUL

What's a great getaway without great food? Mount Rainier National Park by Guest Services offers the perfect dining options, from convenient snack bars to casual dining with classic American and Northwestern cuisine in spectacular settings. Breakfast, lunch and dinner are offered in The National Park Inn and Paradise Inn. Quick meals are available at Paradise Inn, Jackson Memorial Visitor Center and Sunrise Day Lodge. Be sure to try our legendary "Sunday Brunch" at Paradise Inn. It's a culinary extravaganza including carved beef, fresh salmon, omelettes, and special desserts created by our Pastry Chef.

RESERVATIONS (360) 569-2275  
 GENERAL INFORMATION (360) 569-2400

[www.guestservices.com/rainier](http://www.guestservices.com/rainier)



### NATURE'S PLAYGROUND

This is truly the great outdoors. Enjoy panoramic views of endless mountain meadows, lush with wildflowers and fauna. Explore the splendor of a National Park forest and its trails that is home to diverse wildlife.

When you're ready for some fun in the snow, we're ready with everything you'll need! We rent cross-country ski equipment and snowshoes by the day, or arrange for lessons and guided tours. Travel the breathtaking Alpine countryside. Glide down miles of secluded nature trails. Cross-country skiers, beginner and expert alike, can choose the perfect terrain (seasonal). All this in the shadow of the world's most beautiful and majestic mountain.

### SUNRISE DAY LODGE & VISITOR CENTER

June 27, 1998 - September 13, 1998 (weather permitting)

Visit the highest point in the park accessible by car (6400 feet). View the dormant volcanoes of the Cascades, Mount Rainier, Hood, Baker and Adams. Gift shop and dining available.

### NATIONAL PARK INN WINTER PACKAGES

October 18, 1998 - April 29, 1999

**CELEBRATION PACKAGE** - a room with private bath, breakfast and a chilled bottle of champagne. Available Sunday through Thursday, holidays excluded. From \$66 per night.

**SKI PACKAGE** - a room with private bath, breakfast for 2, and use of cross-country skis or snowshoes for 1. Additional equipment rental \$7.50 per day, per person. Available Sunday through Thursday, holidays excluded. From \$73.50 per night.

**BED AND BREAKFAST PACKAGE** - available during the winter season. Complimentary breakfast served 7 a.m. - 11 a.m. Available 7 days a week. From \$91 per night.

Rates subject to change, plus State Sales Tax. Advanced reservations for all packages recommended.

\* Cancellation policy: Minimum of seven days notice is required, subject to \$10 handling fee. Less than seven days notice results in charge for one night's room rate plus tax.

All facilities at Mount Rainier National Park are non-smoking.