



Routes of Ascents
on South Side of
MOUNT RAINIER

A Summary of Ascents of Mount Rainier

by DEE MOLENAAR

IN *THE MOUNTAINEER* of 1920 (Vol. 13), an article by Harry M. Myers lists the noteworthy ascents of Mount Rainier up to that time. In the light of new information on these earlier ascents and subsequent records of later climbs, the following revised summary is presented.

The routes are listed chronologically in order of the dates of their first ascents and, where possible, are followed by references to articles on the specific ascent. It is hoped that this compilation will be maintained and augmented by a continuing record of future ascents and explorations on the peak.

FIRST ATTEMPT: Incomplete ascent of Kautz Glacier.

July 15, 1857: Lt. A. V. Kautz reached approximately 12,000 feet; others in Kautz' party included Dr. O. R. Craig, soldiers Dogue and Carroll, and Indian guide Wapowety. (*Overland Monthly*, 1875, pp. 394-403; E. S. Meany's *Mount Rainier: A Record of Exploration*.)

FIRST ASCENT: GIBRALTAR ROUTE

August 17, 1870: General Hazard Stevens and P. B. Van Trump, guided to timberline on Mazama Ridge by Indian Sluiskin. (Meany's *Mount Rainier: A Record of Exploration*; *Mazama*, Vol. 3; *Atlantic Monthly*, November, 1876.)

October 17, 1870: F. S. Emmons and A. D. Wilson. (*American Journal of Science and Arts*, Vol. 101, 1871, p. 161; *The Nation*, Vol. 23.)

August 17, 1883: P. B. Van Trump, George B. Bayley, James Longmire. (*Overland Monthly*, 1886, p. 266.)

August 14, 1888: P. B. Van Trump, John Muir, E. S. Ingraham, Dan W. Bass, A. C. Warner (photographer), Norman Booth, and C. V. Piper. (*The Mountaineer*, Vol. 2, 1909, and Vol. 8, 1915.)

1889: At least two ascents reported in 1889.

1890: Solo ascent by Oscar Brown.

August 10, 1890: First ascent by woman, Miss Fay Fuller, in company with Len Longmire, Rev. Ernest Smith, Mr. Parish and Mr. Amsden.

1890: S. C. Hitchcock, Will Hitchcock, A. F. Knight and Van Watson. (An inscription in a rock 50 feet east of Register Rock on the crater rim, bearing the above four names, was found by guide Jim Whittaker on August 13, 1954.)

February 13, 1922: First winter ascent, by Jean and Jacques Landry, Jacques Bergues and Charles Perryman. (*The Mountaineer*, Vol. 28, 1935.)

1916-1922: Stone shelter cabins at Camp Muir constructed by National Park Service. The Gibraltar Route was used extensively by the guides and other summit parties during the 1920s and early 1930s.

1919-1926: Swiss brothers Hans and Heinie Fuhrer, guides at Paradise. During this period, the brothers reportedly made over 150 ascents each of Rainier from Camp Muir. (See *The American Alpine Journal*, Vol. 2, No. 3, 1935, p. 320).

Winter, 1936-1937: Portion of Gibraltar Route ledge broke away; route abandoned and Kautz and Ingraham-Emmons routes used instead.

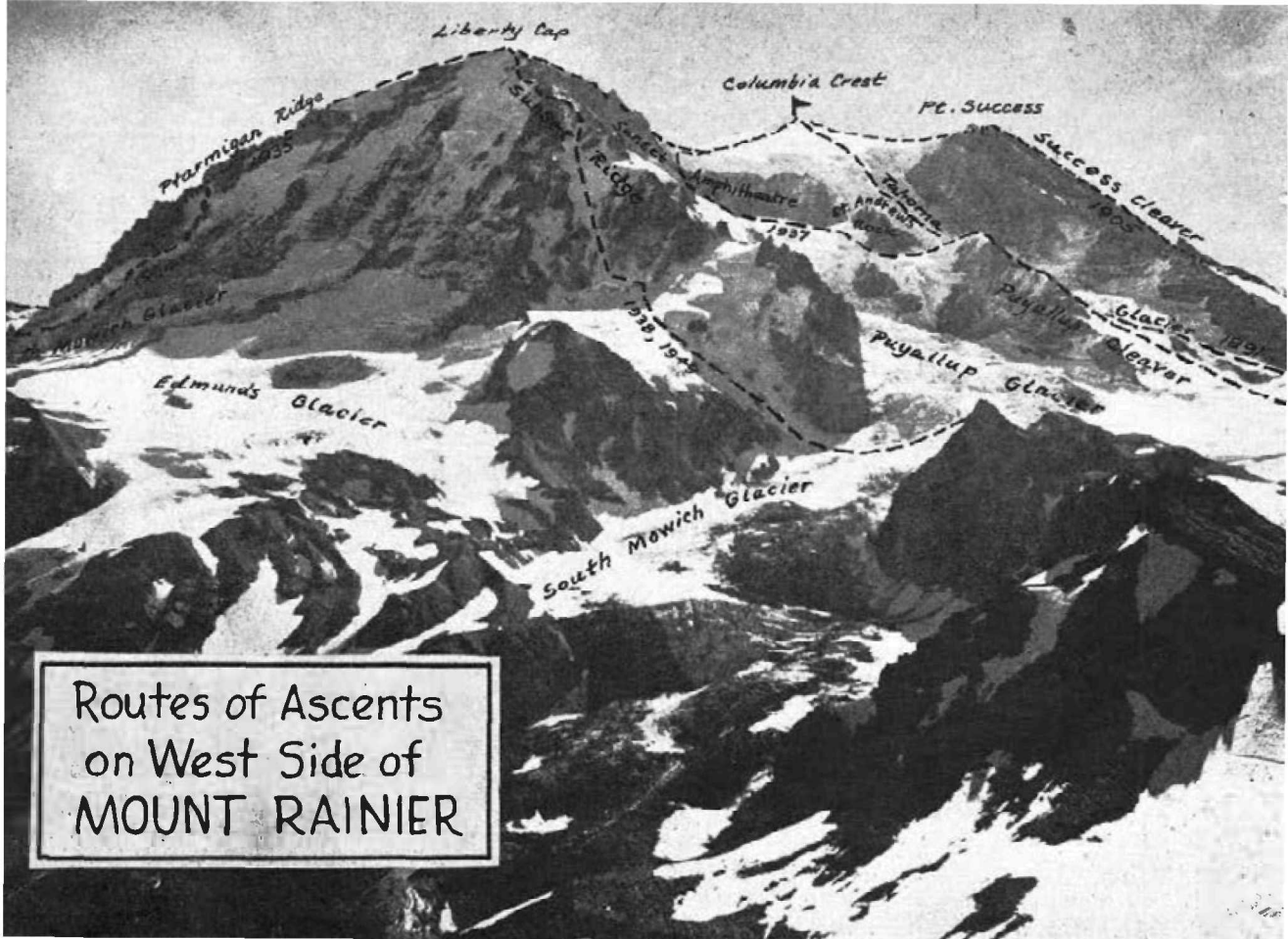
July 13, 1948: Park rangers George R. Senner and Cornelius "K" Molenaar discover new route past Gibraltar ledges. Route reopened to summit climbers.

EMMONS-WINTHROP GLACIER ROUTE

August 20, 1884: First ascent by J. Warner Fobes, George James and Richard O. Wells of Snohomish. (Although previously unsubstantiated, story of this ascent was brought to light in *The Mountaineer*, Vol. 47, 1954, p. 5.)

1885-1886: Two attempts by E. S. In-

Dee Molenaar photo



Dee Molenaar photo

Routes of Ascents
on West Side of
MOUNT RAINIER

graham turned back by weather below top.)

July 24, 1896: I. C. Russell, Bailey Willis, George Otis Smith, F. H. Ainsworth and William B. Williams. (*The Mountaineer*, Vol. 8, 1915, p. 48; *Scribners Magazine*, August, 1896; 18th Annual Report Geological Survey, 1896-7, Part 2.)

April 30, 1927: Ski ascent of Emmons Glacier to 12,500 feet by W. J. Maxwell, A. W. Anderson and Lester LaVelle. (*The Mountaineer*, Vol. 20, 1927, p. 49.)

April 7, 1928: Partial ski ascent by Walter Best, Hans Otto Giese and Dr. Otto Strizeck.

July 1, 1930: First complete ski ascent by Sigard Hall; icy conditions prevented complete ski descent. (*The Mountaineer*, Vol 32, 1939.)

July 18, 1948: First complete ski descent by Kermit Bengston, Dave Roberts, Clifford Schmidtke and Charles E. Welsh. (*The Mountaineer*, Vol. 39, 1948.)

1955: Second complete ski descent by Robert McCall and Marcel Schuster.

INGRAHAM GLACIER

1885: Allison L. Brown and seven Yakima Indians made incomplete ascent of Ingraham Glacier, via Whitman Glacier. (*The Mountaineer*, Vol. 13, 1920.)

Nearly all subsequent ascents of Ingraham Glacier have been made via Camp Muir.

TAHOMA GLACIER

1891: P. B. Van Trump and Mr. Riley, via Indian Henry's Hunting Ground and South Tahoma Glacier.

1892: P. B. Van Trump and George Bayley, same route as above.

July 17, 1914: Joseph Stamphler, Winthrop T. Hovey, Roy Young, David Young and Roscoe Young. Descent via Gibraltar.

July 6, 1934: Hans Fuhrer and Alfred E. Roovers, via Puyallup Cleaver for first time; descent via Gibraltar Route. (*The American Alpine Journal*, Vol. 2, 1935, p. 317-321.)

1935: Granville Jensen, Joe Halwax, Lavelle Cooper.

1940: Lyman Boyer, Joe Buswell, Dave Lind.

Since World War II, the Tahoma Glacier Route has been ascended at least a dozen times.

LITTLE TAHOMA (11,117-foot spur on east flank of Rainier)

August 29, 1895: First ascent by J. B. Flett and H. H. Garrison.

April, 1933: Paul Gilbreath and Wendell Trospen, ski ascent to "within 8 feet of summit."

SUCCESS CLEAVER

July 27, 1905: John R. Glascock and Ernest Dudley, via traverse from Paradise Valley of the Nisqually, Van Trump, Kautz and Pyramid glaciers (actual route on the Cleaver is not clear). (*Sunset Magazine*,

Vol. 16; *Seattle P.-I.*, July 30, 1905, p. 10.)

July 2, 1912: Joseph Stamphler, Phil Barrett and Frank Kandle. Return via Gibraltar.

July 28, 1914: Joseph Stamphler, Dr. Karl F. Meyer, W. N. Ellis, Fred Vinton and Alvin Bogardus. Return via Gibraltar.

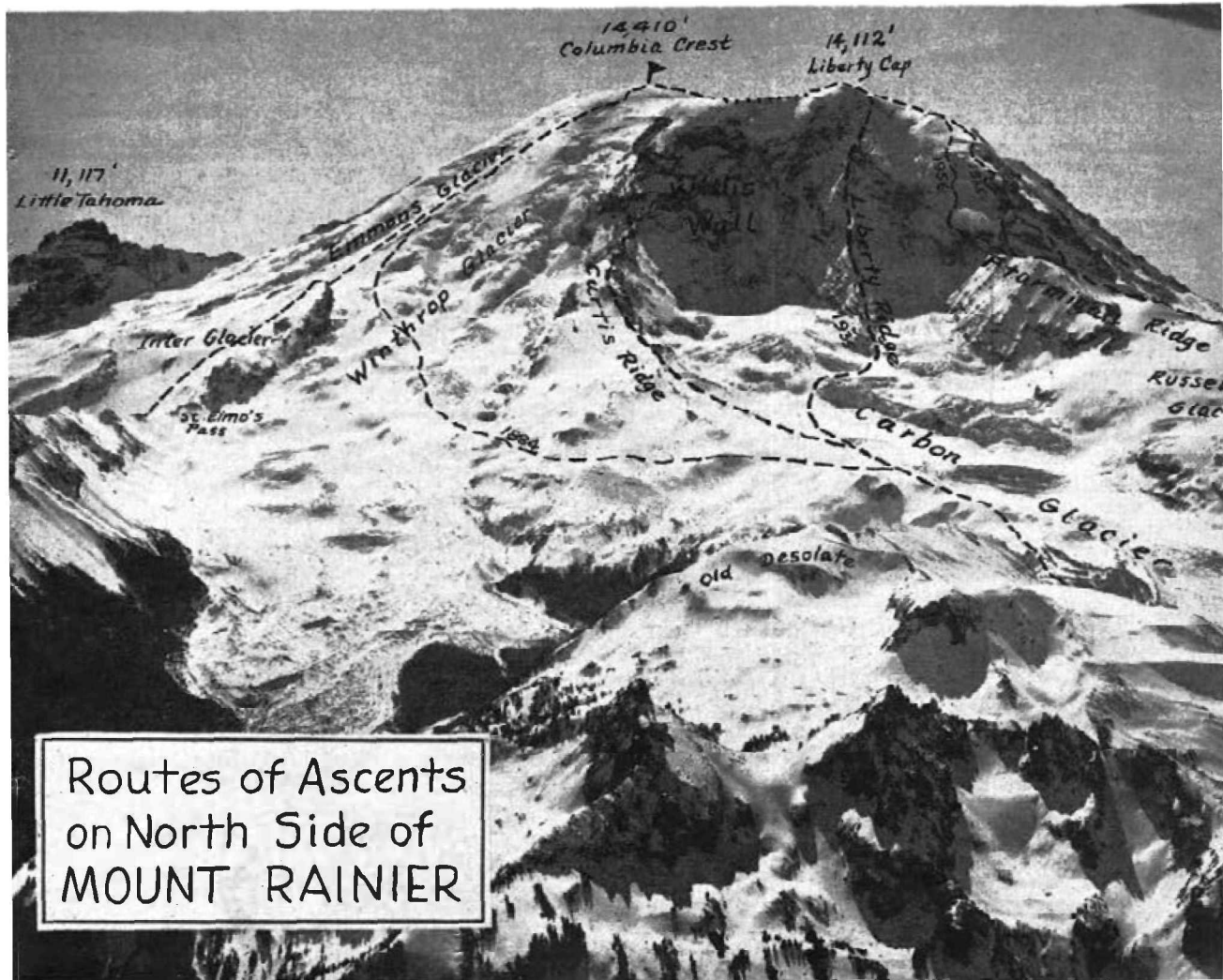
August 15, 1914: Joseph Stamphler, Henry T. Dill and Margaret Hargrave (first ascent of Success Cleaver by woman). Descent by same route.

August 23, 1918: J. Harry Weer, R. S. Wainwright, Harry M. Myers. (*The Mountaineer*, Vol. 11, 1918, pp. 49-50.)

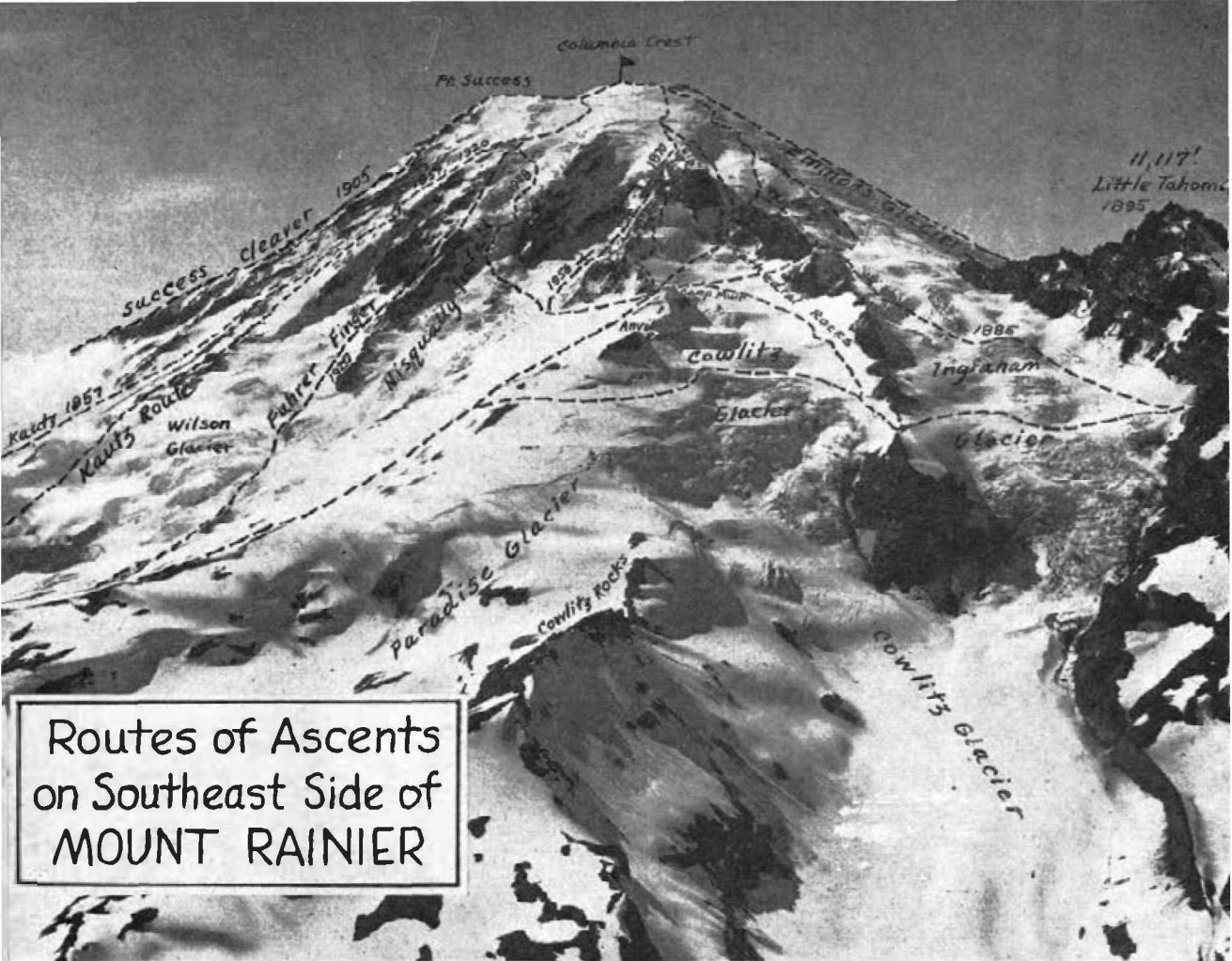
September 1, 1935: Granville Jensen and George MacGowan.

At least six ascents of Success Cleaver have been made since World War II, including second ascent by woman, Marion Long. (See "Success Cleaver As a Climb-

Bob and Ira Spring photo



Routes of Ascents
on North Side of
MOUNT RAINIER



**Routes of Ascents
on Southeast Side of
MOUNT RAINIER**

Bob and Ira Spring photo

ing Route," *The Mountaineer*, Vol. 40, 1949, p. 55.)

KAUTZ ROUTE

- July 15, 1857: First attempt by Lt. A. V. Kautz party; reached ca. 12,000 feet.
- July 28, 1920: First complete ascent, via Van Trump Park, by Hans Fuhrer, Heinie Fuhrer, Roger Toll and Harry Myers.
- July 11, 1924: Joseph T. Hazard, Mrs. Joseph T. Hazard, Charles B. Browne, F. B. Farquharsen, Fred Q. Gorton, Ben C. Mooers, John W. McCrillis, R. P. Burkhead, Alonzo Troth, Herbert C. Fish, Miss Hermie Thompson, J. N. O. Thompson and John Thompson Jr. (*The Mountaineer*, Vol. 17, 1924.)
- 1939-1948: Kautz Route used by guided and independent summit parties from Paradise, following abandonment of Gib-

raltar Route during this period. (*The Mountaineer*, Vol. 37, 1944.)

FUHRER FINGER (Snow finger near head of Wilson Glacier: earlier reports misnamed this route "Nisqually Glacier")

- July 2, 1920: Hans Fuhrer, Heinie Fuhrer, Joseph T. Hazard, Payton Farrer and Thomas Hermans. (See Joseph T. Hazard's *Glacier Playfields of Mount Rainier*.)
- June, 1933: Second ascent, Ariel Edmiston and Wendell Trospen.
- August 30, 1934: Park ranger William J. Butler made round trip from Paradise in 11 hours, 20 minutes.
- 1947: George R. Senner and Robert Weber.
- 1949: Robert W. Craig and Robert O'Brien.
- April 13, 1951: Spring ascent of Fuhrer Finger made by park rangers (William J. Butler, Elvin R. Johnson, Delmer Armstrong, Dee Molenaar) in effort to aid Lt.

John Hodgkins who made first plane landing on Rainier's summit.

1956: Walt Gonnason and Bruce B. Gilbert. (Other possible ascents since 1951.)

PTARMIGAN RIDGE

The reported ascent by a Mr. Lee Pickett and another man, May 18, 1905 or 1906, has never been substantiated and it is extremely unlikely that such a climb reached more than 11,000 feet, where the technical difficulties begin.

The Mountaineer, Vol. 5, 1912, has an article by the famous woman climber, Dora Keene, on a reconnaissance of the ridge.

September 2, 1934: Wolf Bauer and Hans Grage climbed to about 12,500 feet, above the major difficulties, but lack of time forced them to return via the edge of the North Mowich Glacier. (*The Mountaineer*, Vol. 27, 1934).

September 8, 1935: Wolf Bauer and Jack Hossack, first complete ascent; descent to

Paradise via summit traverse. (*The Mountaineer*, Vol. 28, 1935.)

August 19, 1956: Fred Beckey, Herb Staley, John Ripley, via variation of Bauer-Hossack Route; with a traverse beneath ice cliff and ascent of ice slopes on left of ridge.

LIBERTY RIDGE

September 30, 1935: Ome Daiber, Will Barrow Jr., Arnie Campbell. (*The American Alpine Journal*, 1936, Vol. II No. 4; *The Mountaineer*, Vol. 28, 1936.)

August 21, 1955: Marcel Schuster, Dave Mahre, Mike McGuire, Gene Prater. (*The Mountaineer*, Vol. 48, 1955.)

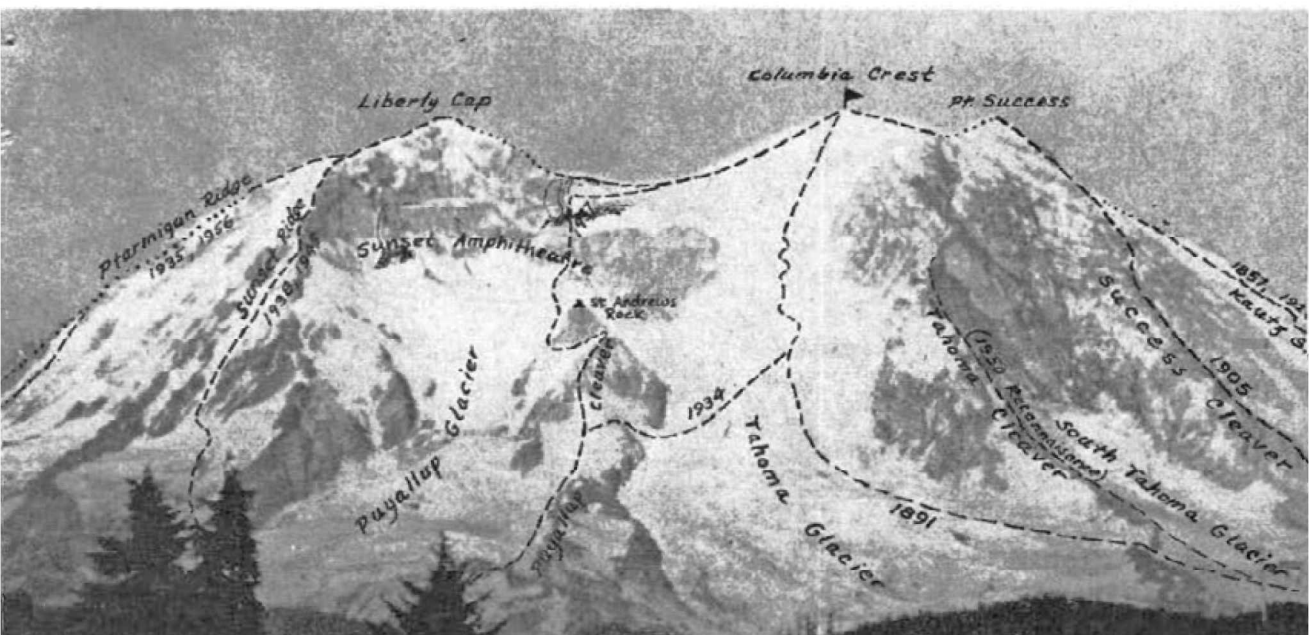
SUNSET AMPHITHEATRE

July 14, 1937: Fred Thieme and Wendell Trosper. (*The Mountaineer*, Vol. 30, 1937.) Descent via Fuhrer Finger.

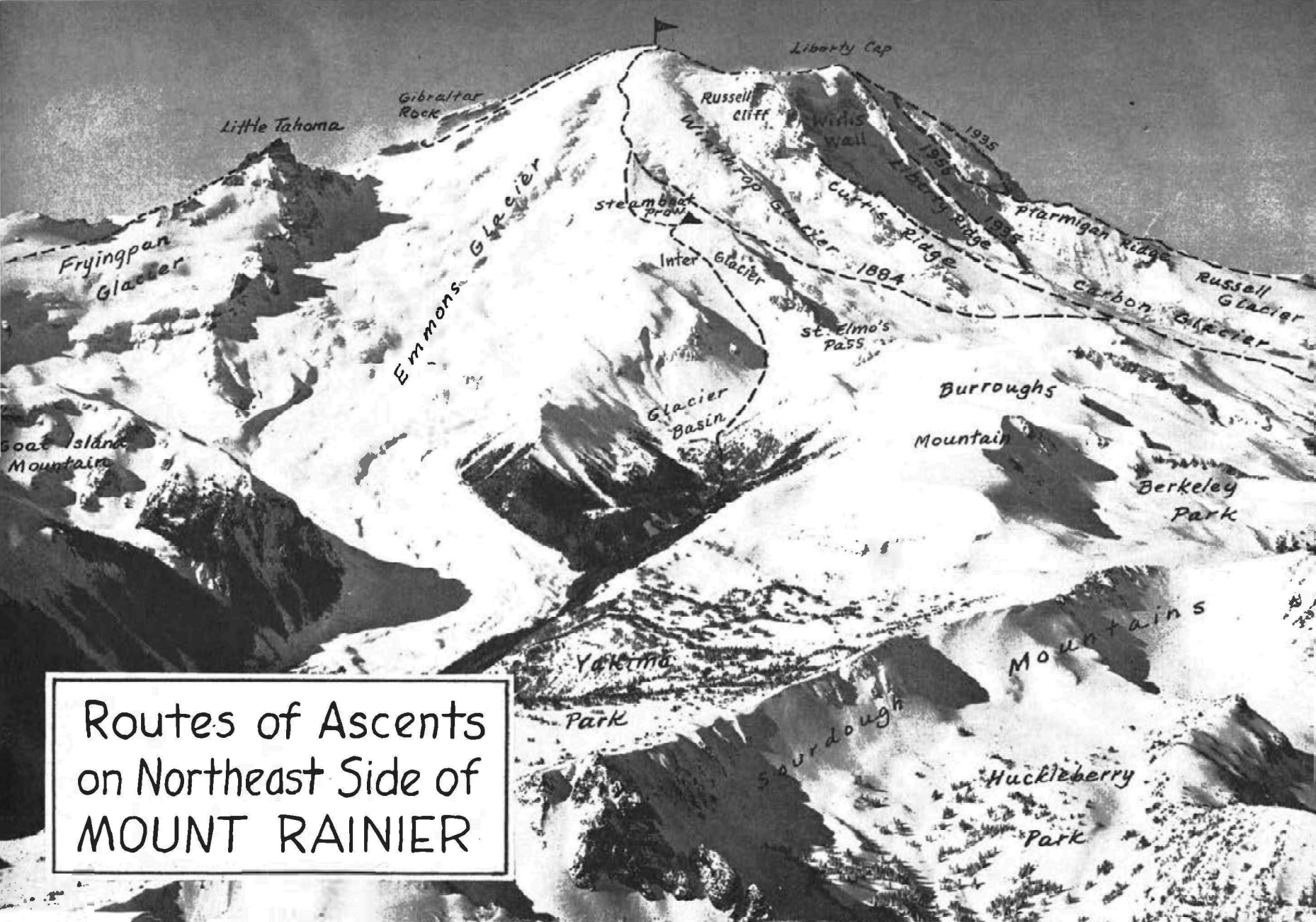
SUNSET RIDGE

August 29, 1938: Lyman Boyer, Arnie Campbell, Don M. Woods; descent via Kautz Route. (*The American Alpine Jour-*

Dee Molenaar photo



Routes of Ascents
on West Side of
MOUNT RAINIER



Routes of Ascents
on Northeast Side of
MOUNT RAINIER

Little Tahoma

Gibraltar Rock

Liberty Cap

Fryingpan Glacier

Emmons Glacier

Russell Cliff

Wilbur Wall

Steamboat Prow

Winn Top

Curtis Ridge

1935

1935

1935

Parmigan Ridge

1935

Carbon Glacier

Russell Glacier

Inter Glacier

1884

St. Elmo's Pass

Burroughs

Goat Island Mountain

Glacier Basin

Mountain

Berkeley Park

Yakima

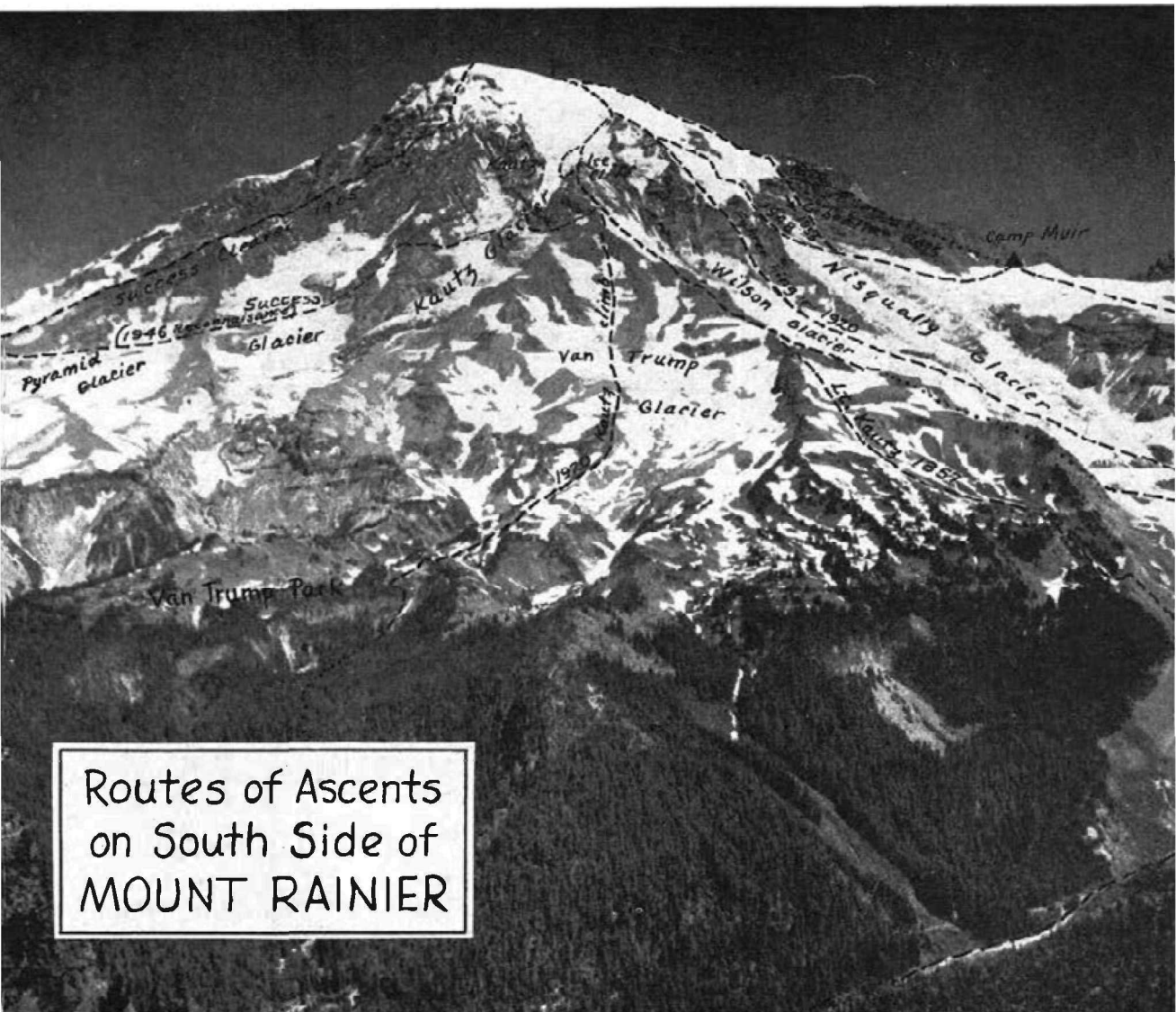
Mountains

Park

Sourdough

Huckleberry

Park



Routes of Ascents
on South Side of
MOUNT RAINIER

Dee Molenaar photo

nal, Vol. 3, 1939; *The Mountaineer*, Vol. 45, 1938.)

August, 1939: Second ascent by Hans Grage and Wendell Trosper. (Information never before recorded.)

August 10, 1949: Cornelius "K" Molenaar and George R. Senner; descent via Tahoma Glacier. (*The Mountaineer*, Vol. 40, 1949.)

NISQUALLY ICEFALL

July 15, 1948: Robert W. Craig and Dee

Bob and Ira Spring photo

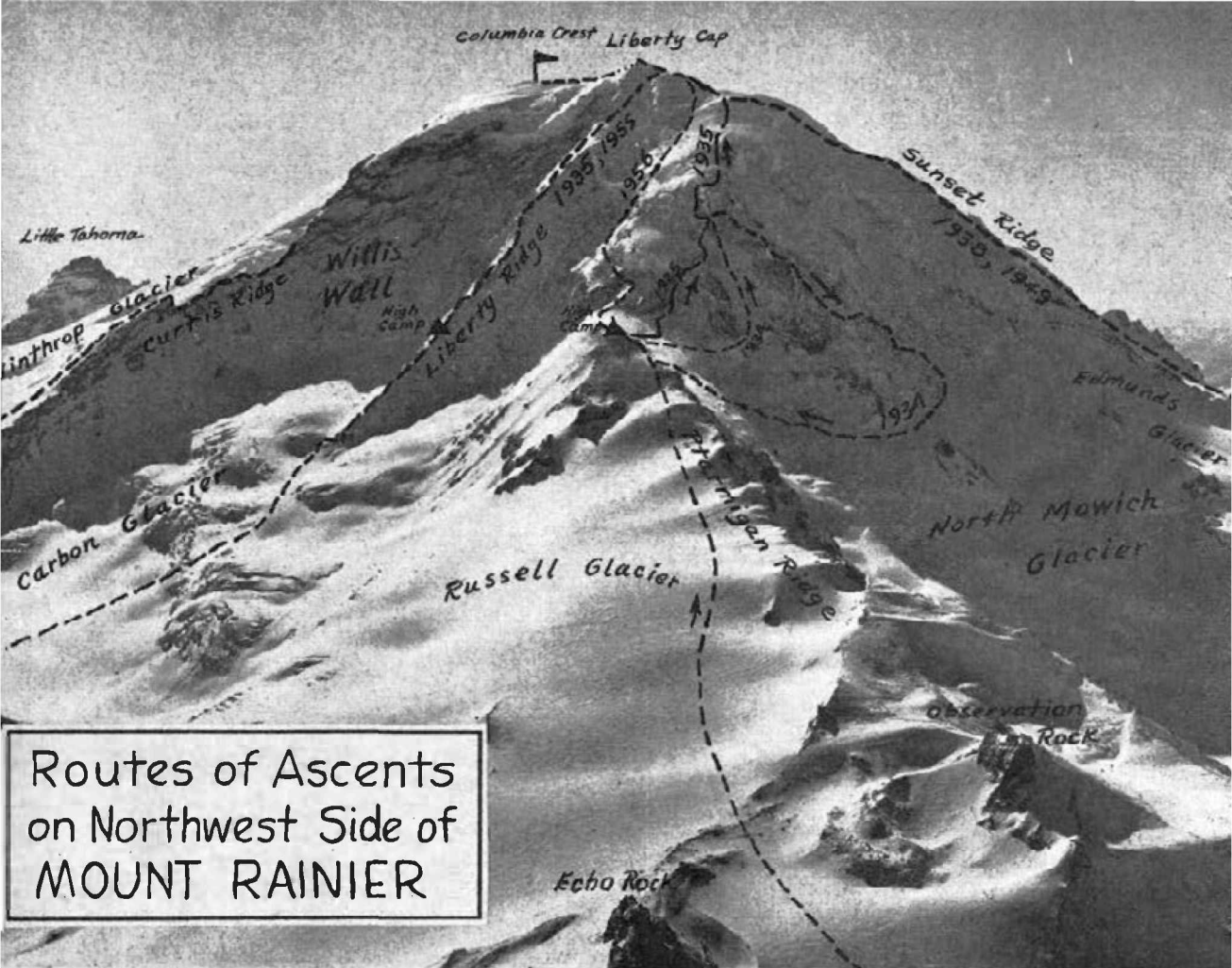
Molenaar. (*The Mountaineer*, Vol. 41, 1948.)

CURTIS RIDGE (Still Unclimbed)

1936-1956: At least eight attempts have been made. Extremely dangerous rockfall and high rotten lava cliffs block the upper 2,000 feet of the ridge. Most attempts ended about 11,000 feet.

UNUSUAL DESCENTS MADE:

September 2, 1934: Wolf Bauer and Hans Grage, after reaching 12,500 feet on



**Routes of Ascents
on Northwest Side of
MOUNT RAINIER**

Bob and Ira Spring photo

Ptarmigan Ridge, descended via the upper north edge of the North Mowich Glacier.

August 13, 1948: Forrest Johnson and George R. Senner, after climbing Success Cleaver, descended via long snow finger between Success Cleaver and Kautz Cleaver (snow gully at head of Success Glacier).

July 1, 1956: Guide Gary Rose and clients descended Gibraltar Route via a complete descent of the Gibraltar "chute," from top of Gibraltar ledge to Nisqually Glacier, traverse back around to Camp Muir.

MISCELLANEOUS CLIMBING NOTES

- Number of people reaching summit: Roughly 9,000.
- 1870-1915: 570.
- 1915-1935: 3,400 (2,855 guided; 545 independent).

1935-1956: 5,000 (Estimate only, made from summit register and summit application forms; guide parties not always counted during this period, or record incomplete.)

Number of routes climbed by one individual: J. Wendell Trosper has ascended 9 of the above listed routes; several others have climbed 6-8 of the routes.

The foregoing summary is the first in a more complete work now being undertaken by the writer. It is hoped that all interested persons having additional comments or corrections that will be pertinent to a complete account of the climbing history of Mount Rainier will contact the writer.