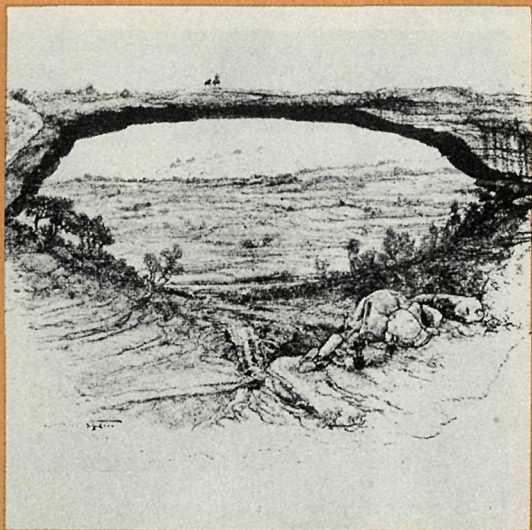


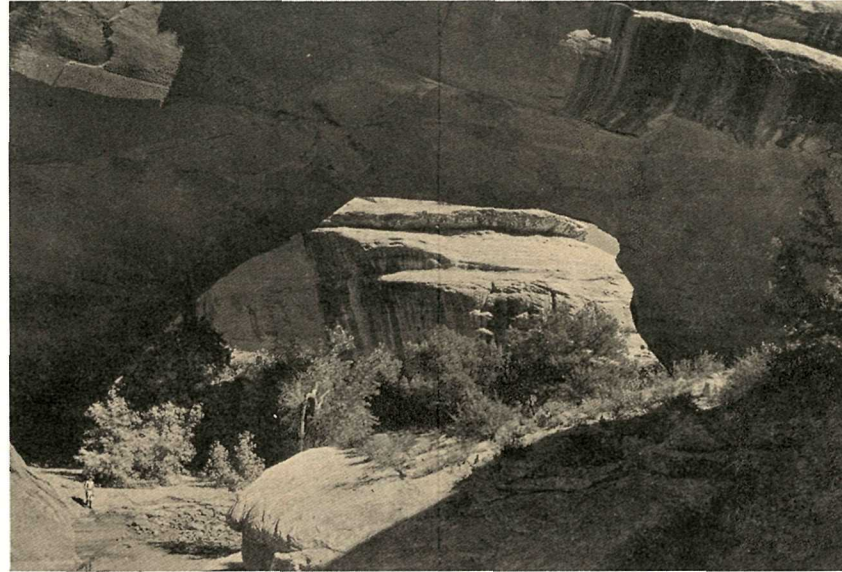
Natural Bridges National Monument, Utah



Sipapu



Kachina



Owachomo



## The center of a land of brilliant cliffs, tortuous canyons, and sandstone pinnacles and arches

To make a natural bridge, Nature requires several conditions: a proper stone that will shape well (a crossbedded sandstone is best), the presence of joints or fractures in the rock, and a desert-type stream that occasionally scours its bed with a tremendous head of water and sand.

The rock of the Natural Bridges area is a crossbedded sandstone known as the Cedar Mesa Sandstone. It is of Permian age, more than 225 million years old.

Long after the land had begun its slow rise from an ancient seabed, two small streams formed on the western slopes of Elk Ridge and made meandering channels across the flat land. They gradually entrenched themselves as the land underwent new uplift. As the land continued to rise, the streams cut ever deeper channels—known today as White and Armstrong Canyons.

Every stream attempts to make a straight channel with an even grade from its source to its mouth. Any obstacles, such as hills or large rock masses, are gradually worn away. Thus, these winding streams were constantly trying to straighten their courses. During floods, silt-laden waters

were thrown with great force against the walls of the meanders. In several places, a fin of rock around which the stream wound was so thin that over many centuries a hole was gradually bored through, and a natural bridge was born. The stream continued to cut its channel and, with the aid of other processes of erosion, to enlarge the opening. Eventually, the old meander was left high and dry as a “fossil” streambed.

Most of the natural bridges of the United States are in the Four Corners region of the Southwest, where favorable materials and conditions for bridge-making exist, Rainbow Bridge, south of here on Lake Powell, is the world's largest.

Tonto Natural Bridge in central Arizona has been built up of spring-deposited travertine, and Natural Bridge in Virginia was formed when most of the roof of a limestone cavern collapsed. These are two other ways in which a bridge may be made.

The arches of Arches National Park and elsewhere were created by frost and erosion and a variety of ways distinguishing them from a natural bridge. Essentially, they “bridge” no stream or streambed.

Bridge	Height (feet)	Span (feet)	Width (feet)	Thickness (feet)
Sipapu	220	268	31	53
Kachina	210	206	44	93
Owachomo	106	180	27	9

**Sipapu Bridge**, in its maturity, has a graceful, symmetrical span; its abutments are now far enough from the streambed that the river has little or no cutting effect on the rock. The graceful arch of this bridge suggested to its namers the sipapu—a hole through which the Hopi believe their ancestors emerged from a lower, dark world into the present sunlit one.

**Kachina Bridge**, at a youthful stage in the life of a natural bridge, is huge and bulky. Flood waters in White Canyon are still enlarging the opening beneath the span. On one of the abutments of this bridge are numerous prehistoric pictographs, some of which resemble Hopi masked dancers, or *kachinas*—hence the name.

**Owachomo Bridge** is in a late phase; it suffers no stream erosion—only erosion from rain, frost action, and sandblast. Its life expectancy is less than that of the other two; it may stand for centuries, or the fatal crack might already have started. Owachomo (rock mound) was so named for the large rounded rock mass near one end of the mesa.

### HISTORY

White man first saw the bridges in 1883, when Cass Hite, a prospector, visited the region. National publicity was given to the area in 1904 by the National Geographic Magazine. In 1908 President Theodore Roosevelt proclaimed the area Natural Bridges National Monument.

Shortly after the monument was established, an effort was made to find Indian names that would fit the bridges. Paiute Indians, who still live in the country, had no names for the individual bridges. They professed to know only a single term, which they applied to all bridges, natural or otherwise. This was “Ma-Vah-Talk-Tump,” or “under the horse's belly.”


At that time it was generally thought that the prehistoric people whose dwellings the ruins of southern Utah represent were direct ancestors of the Hopi Indians; so it was natural, when no Paiute names were forthcoming, that Hopi names should be applied to the bridges.

This section of Utah supported an Indian population from about 2,000 to 650 years ago. Thousands of ruins stud the mesas and canyons of the district; some 200 sites lie within the monument. Both White and Armstrong Canyons, however, are too narrow to have furnished enough farmland for many families at one time.

If you hike between the bridges, you will find one cliff dwelling of several rooms, kivas, and granaries. The prehistoric occupants were related to the Anasazi Culture of Mesa Verde in Colorado.

*Please do not enter ruins you may come across. If these or artifacts are disturbed in any way a priceless archeological story could be destroyed forever.*

# NATURAL BRIDGES NATIONAL MONUMENT

 Parking

**WARNING: HAZARDOUS TERRAIN THROUGHOUT THE AREA;  
LIGHTNING MAY STRIKE OVERLOOKS AND  
VIEWPOINTS DURING STORMS.**



REV. DECEMBER 1971 DECEMBER 1966 NM-NB-17000

## HOW TO SEE THE MONUMENT

Since portions of the roads approaching the monument from the west are of dirt, they become muddy and sometimes impassable during and after rainstorms. The roads within the monument, however, are paved as are approach roads from the east.

Your first stop at the monument should be the visitor center, where you can obtain information about the area from the park ranger, examine museum exhibits, and view a program of color slides. A short time spent in the visitor center will greatly enhance your enjoyment and understanding of the monument.

From the visitor center, an 8-mile loop road links the trails to the three bridges. A parking area is at the head of each trail.

Please note: camping supplies, food, and gasoline are not available in the monument; the nearest source is Fry Canyon, 26 miles from the visitor center on Utah 95.

The campground is near the visitor center. The nearest overnight accommodations are at Blanding and Mexican Hat, Utah, 42 and 44 miles, respectively.

The monument is open all year, but the most pleasant season is from late April through October.

## ADMINISTRATION

Natural Bridges National Monument, with an area of 7,600 acres, is administered by the National Park Service, U. S. Department of the Interior.

The superintendent of Canyonlands National Park, whose address is Moab, UT 84532, is in charge of the monument.

As the Nation's principal conservation agency, the Department of the Interior has responsibility for most of our nationally owned public lands and natural resources. This includes fostering the wisest use of our land and water resources, protecting our fish and wildlife, preserving the environmental and cultural values of our national parks and historical places, and providing for the enjoyment of life through outdoor recreation. The Department assesses our energy and mineral resources and works to assure that their development is in the best interests of all our people. The Department also has a major responsibility for American Indian reservation communities and for people who live in Island Territories under U.S. administration.

NATIONAL PARK SERVICE  
U.S. DEPARTMENT of the INTERIOR

☆GPO: 1975-585-440/107  
REPRINT 1975

Natural Bridges National Monument, Utah

