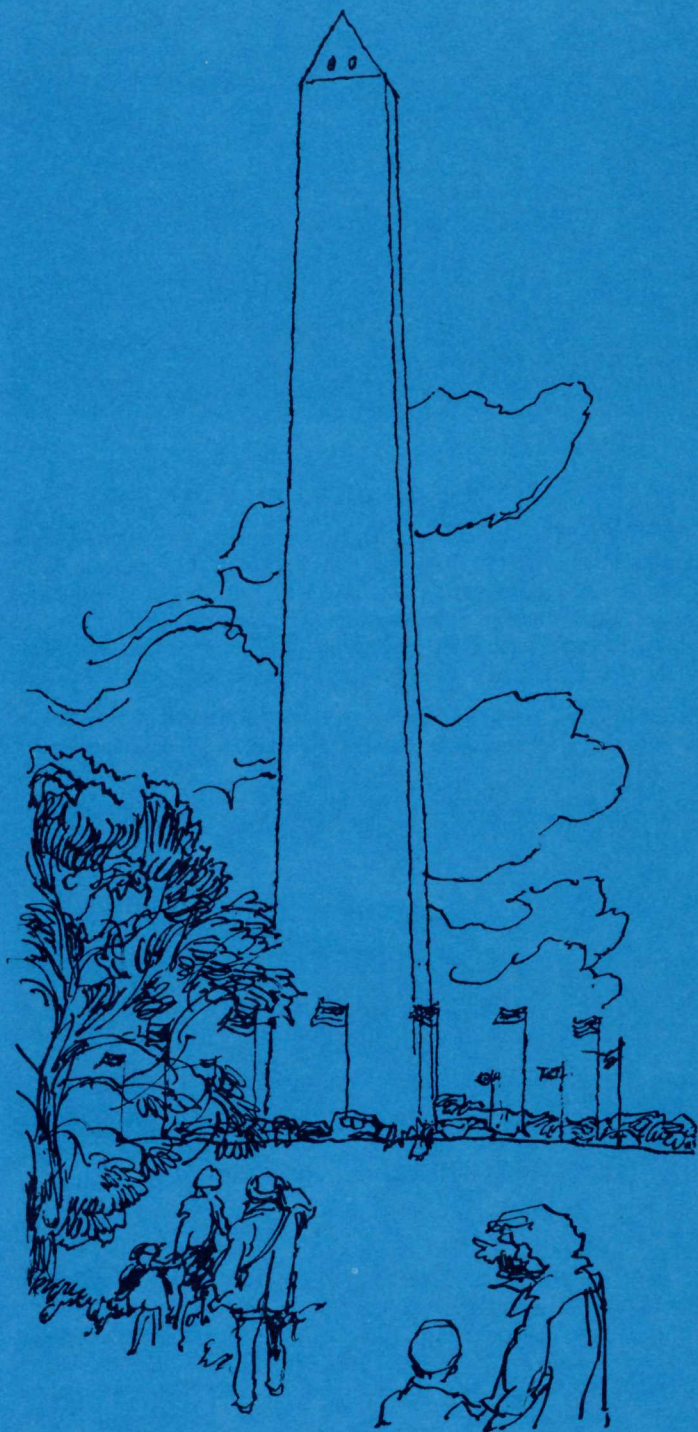


**Welcome to Washington**



**National Park Service**

## OTHER PLACES OF INTEREST

### BOTANIC GARDENS

1ST ST. AND MARYLAND AVE. SW.  
Open Sunday through Friday 9 a.m. to 4 p.m.; Saturday, 9 a.m. to noon.

### BUREAU OF ENGRAVING AND PRINTING

14TH AND C STREETS SW.  
Tours 8 a.m. to 2:30 p.m., Monday through Friday. Closed Saturdays, Sundays, and holidays.

### CORCORAN GALLERY OF ART

17TH ST. AND NEW YORK AVE. NW.  
Open 10 a.m. to 4:30 p.m., Tuesday through Friday; Saturday, 9 a.m. to 4:30 p.m.; Sundays and holidays (except July 4, December 25, and January 1), 2 p.m. to 5 p.m.

### DAUGHTERS OF THE AMERICAN REVOLUTION MUSEUM

17TH AND D STS. NW.  
Open 9 a.m. to 4 p.m., Monday through Friday; (10 a.m. to 3 p.m. in winter). Closed Saturdays, Sundays, and holidays.

### DEPARTMENT OF THE INTERIOR MUSEUM

19TH AND C STS. NW.  
Open 8 a.m. to 4 p.m., Monday through Friday. Closed Saturdays, Sundays, and holidays.

### FEDERAL BUREAU OF INVESTIGATION

9TH ST. AND PENNSYLVANIA AVE. NW.  
Guided tours 9:15 a.m. to 4:15 p.m., Monday through Friday. Closed Saturdays, Sundays, and holidays. School appointments requested.

### FOLGER SHAKESPEARE LIBRARY

201 EAST CAPITOL ST.  
Open 10 a.m. to 4:30 p.m., Monday through Saturday. Closed Sundays, December 25, and January 1.

### INTERNATIONAL VISITORS SERVICE

801 19TH ST. NW.  
Open 9 a.m. to 5:30 p.m., Monday through Friday; 10 a.m. to 4 p.m., Saturday. Closed Sundays and holidays.

### KENILWORTH AQUATIC GARDENS

ANACOSTIA AVE. AND PONDS ST. (NEAR KENILWORTH AND EASTERN AVENUES NE.)  
Open daily 7:30 a.m. to sundown. Water lily displays—June through August.

### LIBRARY OF CONGRESS

1ST AND B STS. SE.  
Main exhibit halls—Monday through Saturday 9 a.m. to 10 p.m.; Sundays and holidays (except December 25) 11:30 a.m. to 10 p.m.

### MEDICAL MUSEUM OF ARMED FORCES PATHOLOGICAL INSTITUTE

701 INDEPENDENCE AVE. SW.  
Open 9 a.m. to 5 p.m. daily.

### NATIONAL ARBORETUM

28TH AND M STS. NE.  
Open 8 a.m. to 5 p.m. Monday through Friday; 10 a.m. to 5 p.m. Saturdays, Sundays, and holidays, October to April. Hours extended to 7 p.m., April through September.

### NATIONAL ARCHIVES

PENNSYLVANIA AVE. AT 7TH ST. NW.  
Open 9 a.m. to 10 p.m.; Sunday, 1 p.m. to 10 p.m. Closed December 25 and January 1.

### NATIONAL FISH AND WILDLIFE AQUARIUM

U.S. DEPARTMENT OF COMMERCE, 14TH ST. NORTH OF CONSTITUTION AVE. NW.  
Open daily 9 a.m. to 5 p.m. Closed December 25.

### NATIONAL GALLERY OF ART

6TH ST. AND CONSTITUTION AVE. NW.  
Open 10 a.m. to 5 p.m., Monday through Saturday, (extended to 10 p.m. in summer); 2 p.m. to 10 p.m. Sunday (noon to 10 p.m. in summer). Gallery talks and tours daily. Closed December 25 and January 1.

### NATIONAL ZOOLOGICAL PARK

3000 BLOCK OF CONNECTICUT AVE. NW.  
Grounds open 6 a.m. to 8:30 p.m. daily. Buildings open 9:30 a.m. to 6 p.m. from late April to late October; 9:30 a.m. to 4:30 p.m. the rest of the year.

### NAVAL OBSERVATORY

34TH AND MASSACHUSETTS AVE. NW.  
Tours Monday through Friday at 2 p.m. Evening appointments available. Closed holidays.

### PAN AMERICAN UNION

17TH AND C STS. NW.  
Open 8:30 a.m. to 4 p.m., Monday through Saturday. Closed Sundays and holidays. Small fee for guide service.

### SMITHSONIAN INSTITUTION GROUP

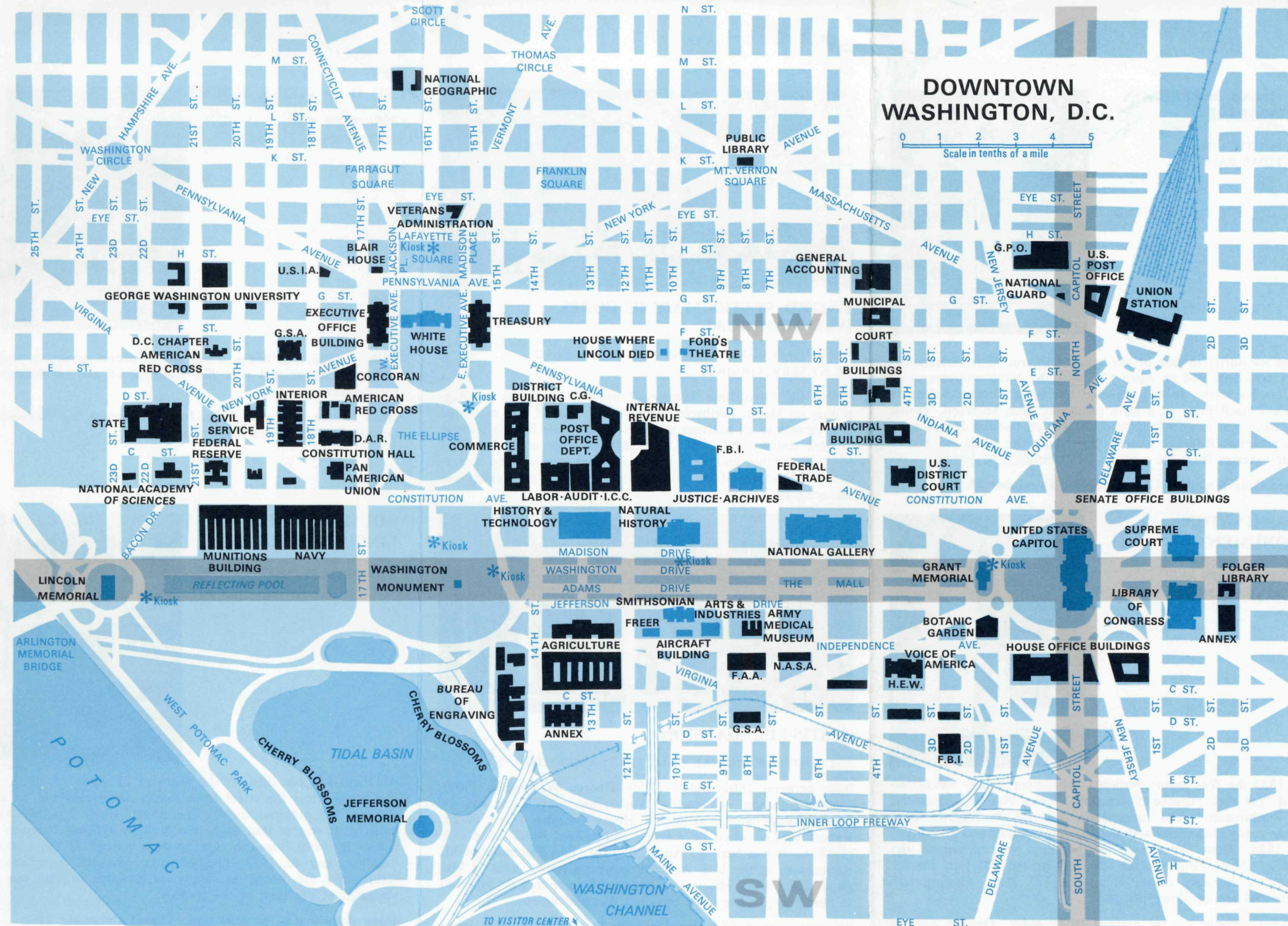
JEFFERSON DR. BETWEEN 9TH AND 12TH STS. SW.  
Open 9 a.m. to 4:30 p.m. From April 1 through Labor Day, History and Technology, Arts and Industries, Air and Space, Natural History Museums, and National Collection of Fine Arts open to 10 p.m. Closed December 25.

### SUPREME COURT

1ST ST. AND MARYLAND AVE. NE.  
Open Monday through Friday 9 a.m. to 4:30 p.m.; Saturday 9 a.m. to noon. Guided tours every 15 minutes when court not in session. Closed Sundays and holidays.

### UNITED STATES CAPITOL

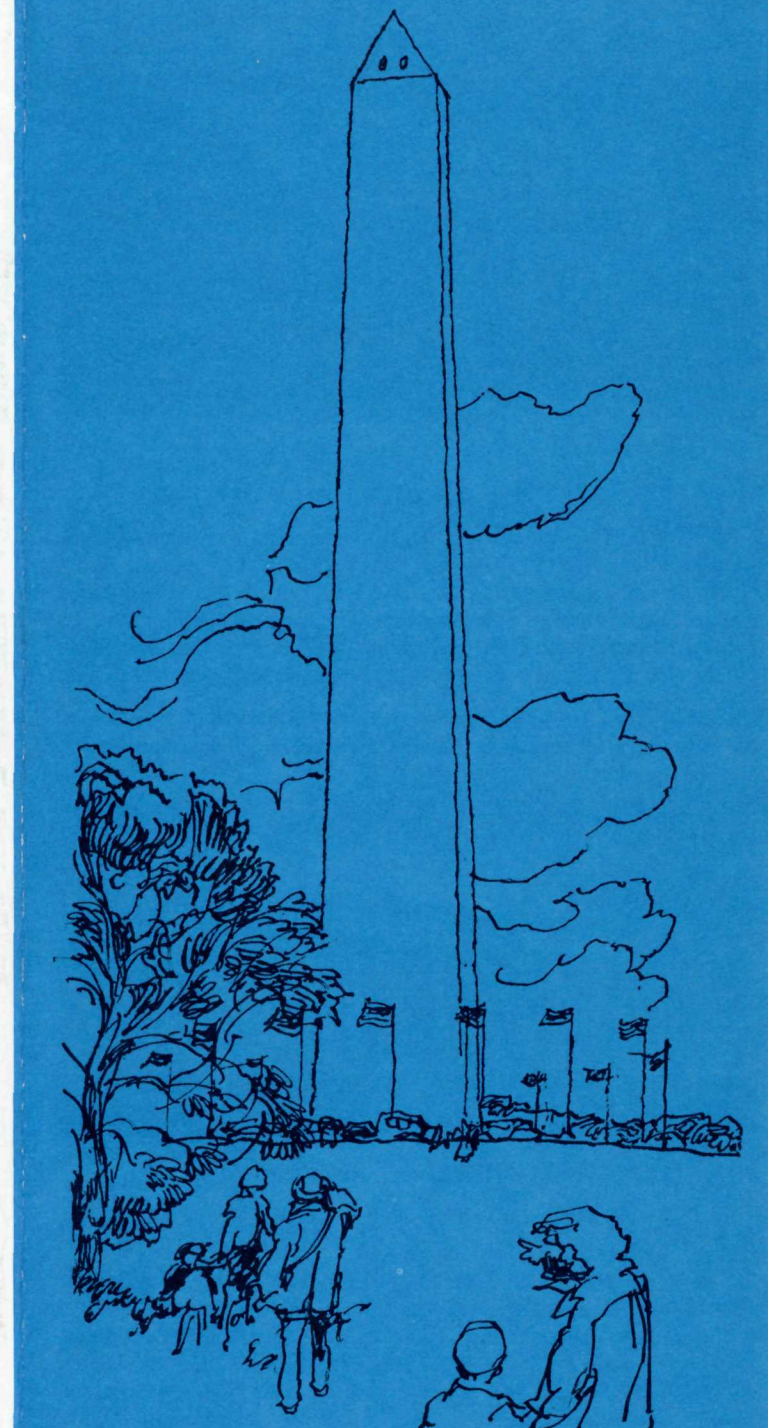
CAPITOL HILL  
Open daily from 9 a.m. to 10 p.m., mid-April through Labor Day; to 4:30 p.m. rest of year. Scheduled tours, for a small fee, include the House of Representatives and Senate Chambers when Congress is not in session. Closed Thanksgiving, December 25, and January 1.



**VISITOR INFORMATION** The National Park Service, wishing to make your visit to the Nation's Capital as interesting and beneficial as possible, offers the facilities at its Visitor Information Center. On Hains Point—about 1 3/4 miles south of the Thomas Jefferson Memorial—in East Potomac Park, it is open from

8:30 a.m. to 5 p.m. daily, except December 25. Here you will find personnel, exhibits, and orientation programs to help you plan your time. Near the center are a picnic area and a refreshment stand, which is open from late March to late September.

## Welcome to Washington



## National Park Service



### WHITE HOUSE

1600 PENNSYLVANIA AVE. NW.

Since 1800, this has been the home of the President of the United States. From here he directs the affairs of our Government. The cornerstone was laid in 1792 on the site selected by President George Washington. The original design was by James Hoban, Irish-born architect. Burned by the British in 1814, the President's House was restored and painted white.

Open 10 a.m. to noon, Tuesday through Saturday; to 2 p.m. on Saturdays in summer. Closed December 25 and January 1.



### LINCOLN MEMORIAL

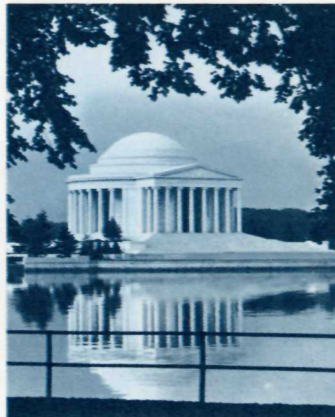
FOOT OF 23D ST. NW.

In 1867, 2 years after Abraham Lincoln's death, the Lincoln Monument Association was organized by Congress to plan a monument to his memory. Legislation authorizing its construction was passed in February 1911. Workmen broke ground on February 12, 1914, and the cornerstone was laid a year later. Henry Bacon was the architect for the memorial. Daniel Chester French was sculptor for the great marble statue of Lincoln as the War President. Carved on the inside of the marble walls are inscriptions of Lincoln's Gettysburg and Second Inaugural Addresses.

Open daily 8 a.m. to 12 p.m. Closed December 25.

### THOMAS JEFFERSON MEMORIAL

ON SOUTH BANK OF TIDAL BASIN.



This memorial to one of the greatest figures in American history was dedicated on April 13, 1943, the 200th anniversary of Jefferson's birth. It was designed by the architectural firm of John Russell Pope in a style associated with Jefferson. Inside the memorial is a 19-foot bronze statue of Thomas Jefferson by the sculptor, Rudolph Evans. On the interior walls are carved four excerpts from the writings of Jefferson.

Open daily 8 a.m. to 12 p.m. Closed December 25.

### WASHINGTON MONUMENT

CONSTITUTION AVE. AT 15TH ST. NW.



In 1833, the Washington National Monument Society was organized "for the purpose of erecting a great National Memorial to Washington." The cornerstone was laid on July 4, 1848. After many difficulties and delays, construction was completed in 1884. Four years later the building was opened to the public. Most visitors reach the top of the 555-foot marble shaft by elevator; others climb the 898 steps, viewing 191 memorial stones along the way.

10-cent elevator fee for persons 16 or older. Open 8 a.m. to 11 p.m. March 20 through Labor Day, and 9 a.m. to 5 p.m. the rest of the year.



### UNITED STATES MARINE CORPS WAR MEMORIAL

ARLINGTON RIDGE RD. AND ARLINGTON BLVD. IN NEARBY VIRGINIA

Called the "Iwo Jima Memorial" because it depicts the flag-raising on Mount Suribachi during World War II, this memorial is dedicated to all Marines who have given their lives in defense of their country since 1775. The memorial was erected in 1954 by U.S. marines and their friends, former marines and reservists, and members of the naval service. Felix W. de Weldon was the sculptor.



### CUSTIS-LEE MANSION

ARLINGTON NATIONAL CEMETERY, ARLINGTON, VA.

Built between 1802 and 1817 by George Washington Parke Custis, grandson of Martha Washington and foster son of George Washington, "Arlington House" became home to Lt. Robert E. Lee when he married Mary Ann Randolph Custis in 1831. It was here on April 20, 1861, that Lee resigned his commission in the U.S. Army to serve his native state of Virginia. Since 1925, efforts have been made to restore the mansion as nearly as possible to its pre-Civil War appearance.

50 cents, or Federal Recreation Area Permit, for persons 16 or older. Open 9:30 a.m. to 6 p.m., April through September; to 4:30 p.m. the rest of the year. Closed December 25.

### THE OLD STONE HOUSE

3051 M ST. NW., GEORGETOWN.



Built in 1765, this house is one of the oldest structures in the Nation's Capital and is a fine example of pre-Revolutionary architecture.

Open 11 a.m. to 5 p.m. daily, July and August; on Wednesday through Sunday the rest of the year.

### HOUSE WHERE LINCOLN DIED

516 10TH ST. NW.



Abraham Lincoln died on the morning of April 15, 1865, in this house across the street from Ford's Theatre, where he was shot on the previous night. The house, which has remained much as it was at that time, was built by William Petersen in 1849. In 1896, the U.S. Government purchased the historic building, and in 1932, five women's patriotic organizations refurbished the house as nearly as possible to the way it appeared at the time of the tragedy.

Open daily 9 a.m. to 5:30 p.m. Closed December 25.

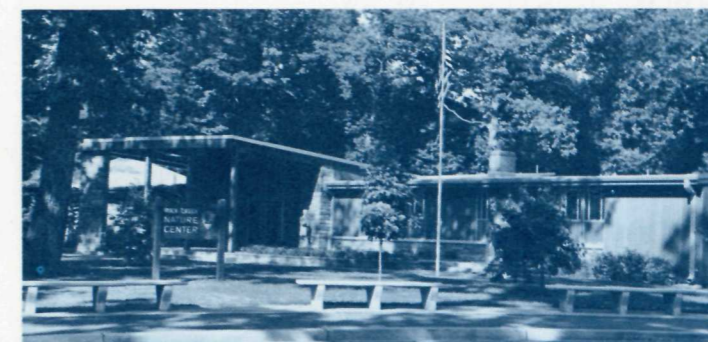
Ford's Theatre, 511 10th St. NW., is being restored as it appeared on the night of the assassination. It will reopen in 1967.



### GRANT MEMORIAL

1 ST ST. AT CAPITOL END OF MALL

Typical of memorials in the National Capital commemorating persons who have won honor in the service of their country, this imposing sculptural group honors Gen. Ulysses S. Grant, hero of the Union Army. It is one of the largest equestrian statues in the world. The impressive figures in bronze sculptured by Henry Merwin symbolize General Grant's military career.



### ROCK CREEK NATURE CENTER

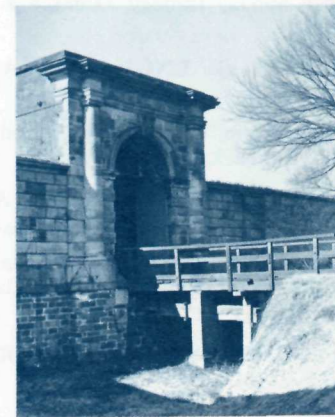
ROCK CREEK PARK—GLOVER RD. NEAR MILITARY RD. NW.

Here are exhibits featuring nature hobbies, live animals, plants, and other natural objects and "work-it-yourself" devices designed to interpret the natural environment; an assembly room where programs on natural history are presented; and a planetarium where the story of the heavens is told. A self-guiding nature trail and other interpretive devices radiate from the center. Park naturalists conduct programs and aid visitors.

Open Tuesday through Saturday, 9:30 a.m. to 5 p.m.; Sunday, noon to 6 p.m., March through November; and to 5 p.m. the rest of the year. Closed Mondays and December 25.

### FORT WASHINGTON

PRINCE GEORGES COUNTY, MARYLAND



On a 341-acre parkland across the Potomac River from Mount Vernon stands Fort Washington, the earliest fort protecting the capital. The first fort built here in 1809 was destroyed by the British in 1814. The present fort was built between 1814 and 1824. It was manned and used by military units from the War of 1812 through World War II, and is now a popular historical and recreational area.

Open daily until sundown. Museum open 10 a.m. to 6 p.m., Saturdays, Sundays, and holidays, June through Labor Day.

### CHESAPEAKE AND OHIO CANAL

DISTRICT OF COLUMBIA AND MARYLAND



Construction of this waterway, an example of early transportation in America, began in Georgetown on July 4, 1828. By 1850, it extended 185 miles to Cumberland, Md. Boats carried coal, flour, and grains on the canal until 1924 when loss of traffic caused its abandonment. The Federal Government acquired the property in 1938. At Great Falls, Md., about 12 miles from D.C., are several locks, the C&O Canal Museum in the old Great Falls Tavern, and a scenic trail to the falls.

Park at Great Falls open daily until sundown; museum, 10 a.m. to 6 p.m.