

# New River Gorge

Riding Amtrak's Cardinal

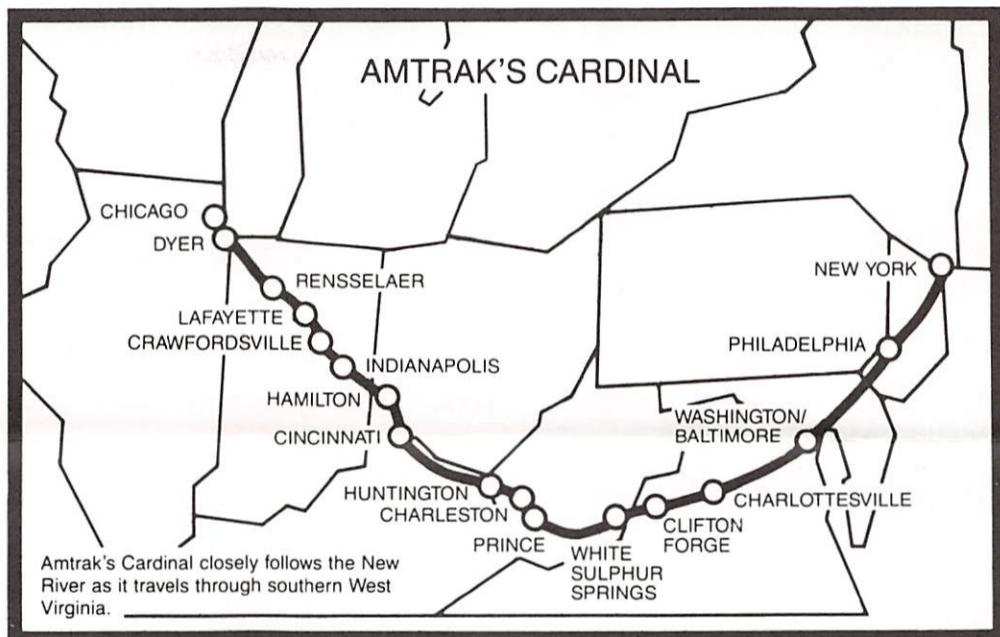
National River  
National Park Service  
U.S. Department of Interior



## "I'm Riding on That New River Train . . ."

Trains and railroading have been the subject of folk tales and songs for many years. The trains running through the New River Gorge were no different. They were the lifeblood of the area ever since the tracks were completed through the gorge in 1873. Since roads were limited, often railroad tracks were the "main street" of the coal mining towns and provided a vital transportation link.

As many as 14 passenger trains a day rumbled through the gorge stopping at towns such as Stone Cliff, Fire Creek, Caperton and Nuttallburg. Although many of the towns are gone now, they still live on in the memories of their former residents and those interested in the rich history of the New River Gorge.



## Park Ranger Rides Train On Sundays

On Sundays, May 25 through August 31, National Park Rangers provide a guided narration from Montgomery, West Virginia to White Sulphur Springs, home of the famous Greenbrier Resort. After an hour and a half layover Rangers board the west bound Cardinal for the return trip to Montgomery.

Traveling Amtrak's Cardinal route, passengers can enjoy some of the most spectacular scenery in the United States as well as explore the cultural history and take advantage of the many recreational opportunities along the way. One trip on the Cardinal will surely convince you that the old song, the "New River Train," is right and ". . . that same old train that brought me here will take me back again."

TRAIN 51 READ DOWN	LEAVE: SUN, WED, FRI	LEAVE: WED, FRI, SUN	TRAIN 50 READ UP
Ar 10:14A Dp 10:40A	(Chesapeake & Ohio) Washington, DC		Dp 8:50P Ar 8:25P
10:56A	Alexandria, VA		8:02P
11:29A	Manassas, VA		7:22P
12:02P	Culpeper, VA		6:49P
	Connecting Motor Coach		
11:20A 12:50P	Richmond, VA Charlottesville, VA—Union Sta.		7:20P 5:50P
1:12P	Charlottesville, VA—Union Sta.		5:45P
2:10P	Staunton, VA		4:40P
3:25P	Clifton Forge, VA (Homestead)		3:30P
4:16P	White Sulphur Springs, WV (Greenbrier)		2:23P
4:51P	Alderson, WV		1:46P
5:28P	Hinton, WV		1:17P
5:58P	Prince, WV (Beckley via Yellow Cab)		12:41P
6:14P	Thurmond, WV		12:24P
7:07P	Montgomery, WV		11:33A
7:44P	Charleston, WV		11:02A
8:51P	Huntington, WV		10:00A
9:10P	Catlettsburg, KY (Serving Ashland, KY & Kenova, WV)		9:31A
10:14P	South Portsmouth, KY (Portsmouth, OH)		8:26A
11:05P	Maysville, KY		7:33A
Ar 12:45A Dp 2:40A	Cincinnati, OH—River Rd. Sta.		Dp 6:10A Ar 5:05A

Service subject to change without notice.



For further information concerning the New River contact:  
Superintendent  
New River Gorge National River  
P.O. Box 1189  
Oak Hill, WV 25901  
304-465-0508



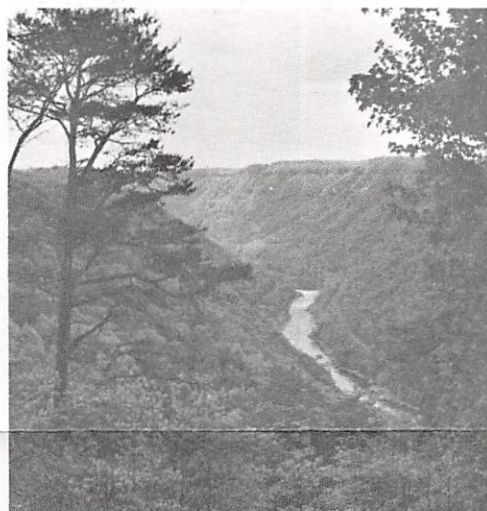
For further information concerning Amtrak fares and scheduling contact a travel agent or call AMTRAK at: 800-USA-RAIL.

## THE NEW RIVER GORGE NATIONAL RIVER — SOMETHING FOR EVERYONE

From its headwaters in the mountains of North Carolina to its confluence with the Gauley River in West Virginia, the New River is one of the most scenic and powerful rivers in the eastern United States.

The National Park Service administers 52 miles of this 62,000 acre river corridor from Hinton to near Fayetteville, "for the purpose of conserving and interpreting outstanding natural, scenic and historic values and objects in and around the New River Gorge and preserving as a free flowing stream an important segment of the New River in West Virginia for the benefit and enjoyment of present and future generations."

### GEOLOGY



Despite its name, the New River is one of the oldest rivers in the world. Formed during the Mesozoic Era, it was the main headwaters branch of an ancient water-course called the Teays River. As the Appalachian Plateau was uplifted, the Teays was powerful enough to downcut through the rising land and create majestic canyons. The glaciers of the Ice Age destroyed the Teays system except for the present day New River which continues on its ancient northerly course.

### WHITewater RAFTING



The challenging rapids of the New River attract whitewater enthusiasts much like the coal did nearly a century ago. Numerous outfitters provide guided trips on the river, sure to thrill all who accept the challenge of one of the best white-water rivers in the eastern United States.

### FISHING

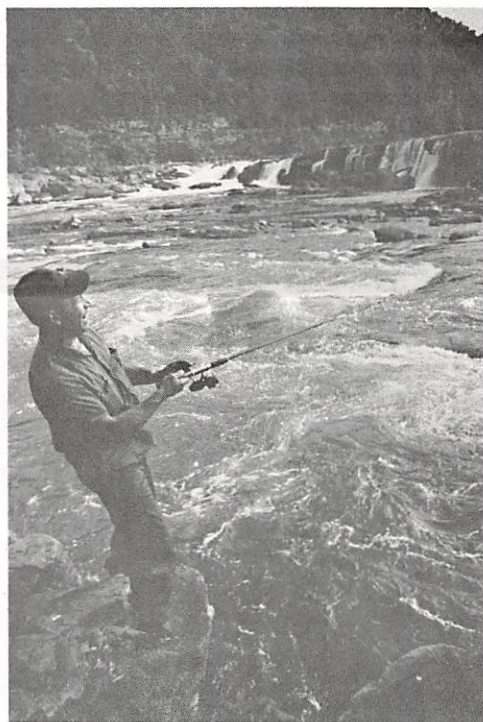
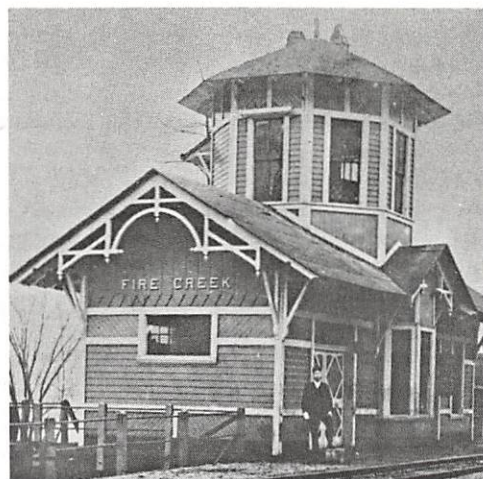


Photo by Gerald Ratliff

The New River is regarded as one of the best streams in West Virginia for smallmouth bass. In addition, muskellunge, walleye, catfish and carp test the skill of the angler. The state also stocks some of the tributary streams with trout.

### CULTURAL HISTORY

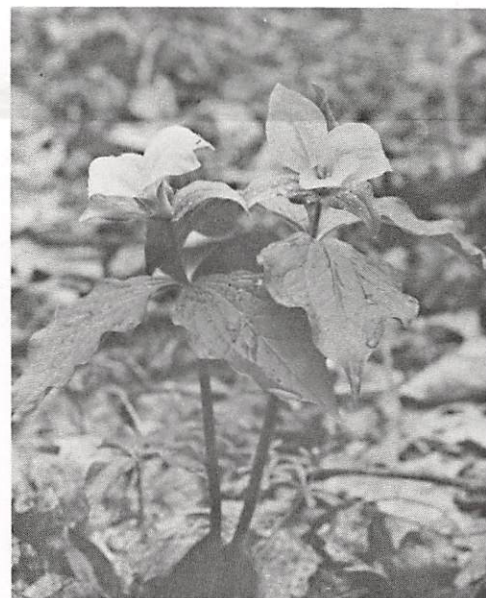


At one time nearly every mining community in the New River Gorge had a train depot similar to the one at Fire Creek. Today few are left but abandoned roads lead modern day explorers into the past; back in time to a day when sawmills whined, coal was king, and the railroad was a way of life. Though the towns are gone, abandoned structures such as the tippie at Kaymoor and numerous coke ovens still stand as silent reminders of a bygone era. What once were bustling communities are now places where we come to reflect on our past, to feel and understand the people who made our lives what they are today.

### NATURAL HISTORY

The New River Gorge is a naturalist's delight! It has an abundance of aquatic and terrestrial wildlife and over a thousand species of flowering plants. There

have been 178 species of birds sighted within the gorge. Spring is an especially good time to visit because of the many woodland wild-flowers and migrating bird species. But no matter what the season, the New River Gorge has something to offer the naturalist in all of us.



### VISITOR CENTERS

A variety of Interpretive programs are offered at the Canyon Rim and Hinton Visitor Centers. Both centers offer school programs on a reservation basis and have a sound/slide orientation film. At each center, free brochures are available; additional publications may be purchased.

At Canyon Rim, located at the New River Gorge Bridge just north of Fayetteville, ranger guided bus tours are offered in the summer. On Sunday afternoons in January and February, former gorge residents come and share what life was like in now abandoned New River communities.

In Hinton interpretive canoe programs are given. The third weekend in June is Railroad Week. Folklorists sing tunes of the rails and retired railroaders tell stories about the era of the old steamers.

A summer schedule of programs is available from the National River.

