



**SUSQUEHANNA DISCOVERY CENTER
DESIGN CONCEPTS**



Main Exhibit Gallery



UGRR & Special Exhibits



Silo Lookouts



Art & Program Gallery



PROJECT PARTNERS



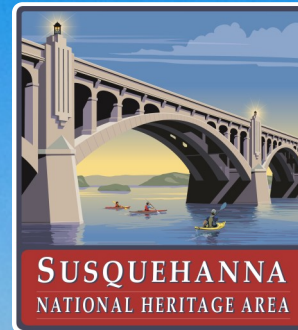
More Information:

Susquehanna National Heritage Area

www.SusqNHA.org

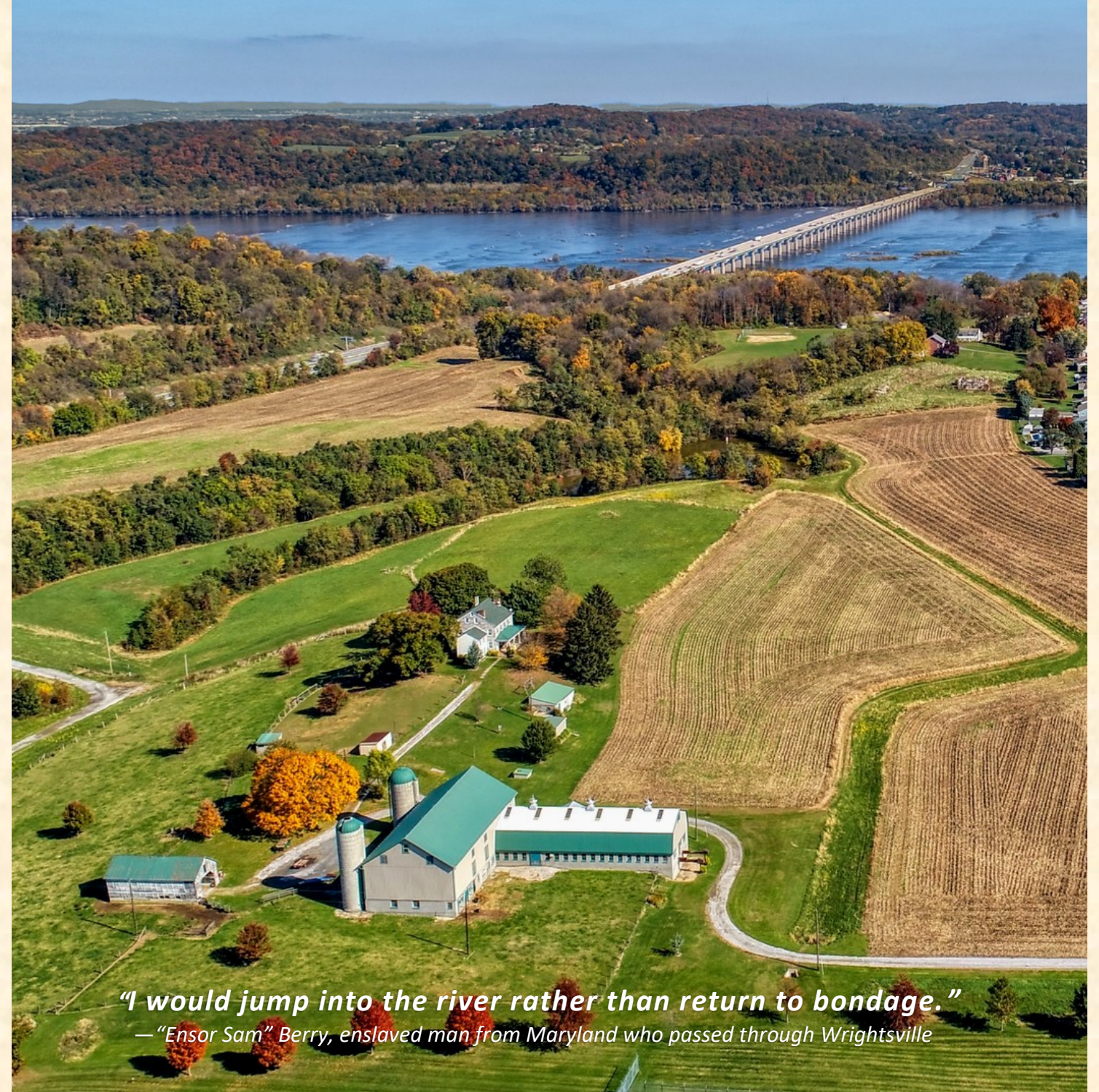
1706 Long Level Road, Wrightsville, PA 17368 / 717-252-0229 / info@susqnha.org

SNHA 3-22



**SUSQUEHANNA DISCOVERY CENTER
AT THE HISTORIC MIFFLIN HOUSE & FARM**

CONCEPT PLAN
March 2022



*"I would jump into the river rather than return to bondage."
— "Ensor Sam" Berry, enslaved man from Maryland who passed through Wrightsville*

A PARTNERSHIP TO PRESERVE A HISTORIC SITE & LANDSCAPE

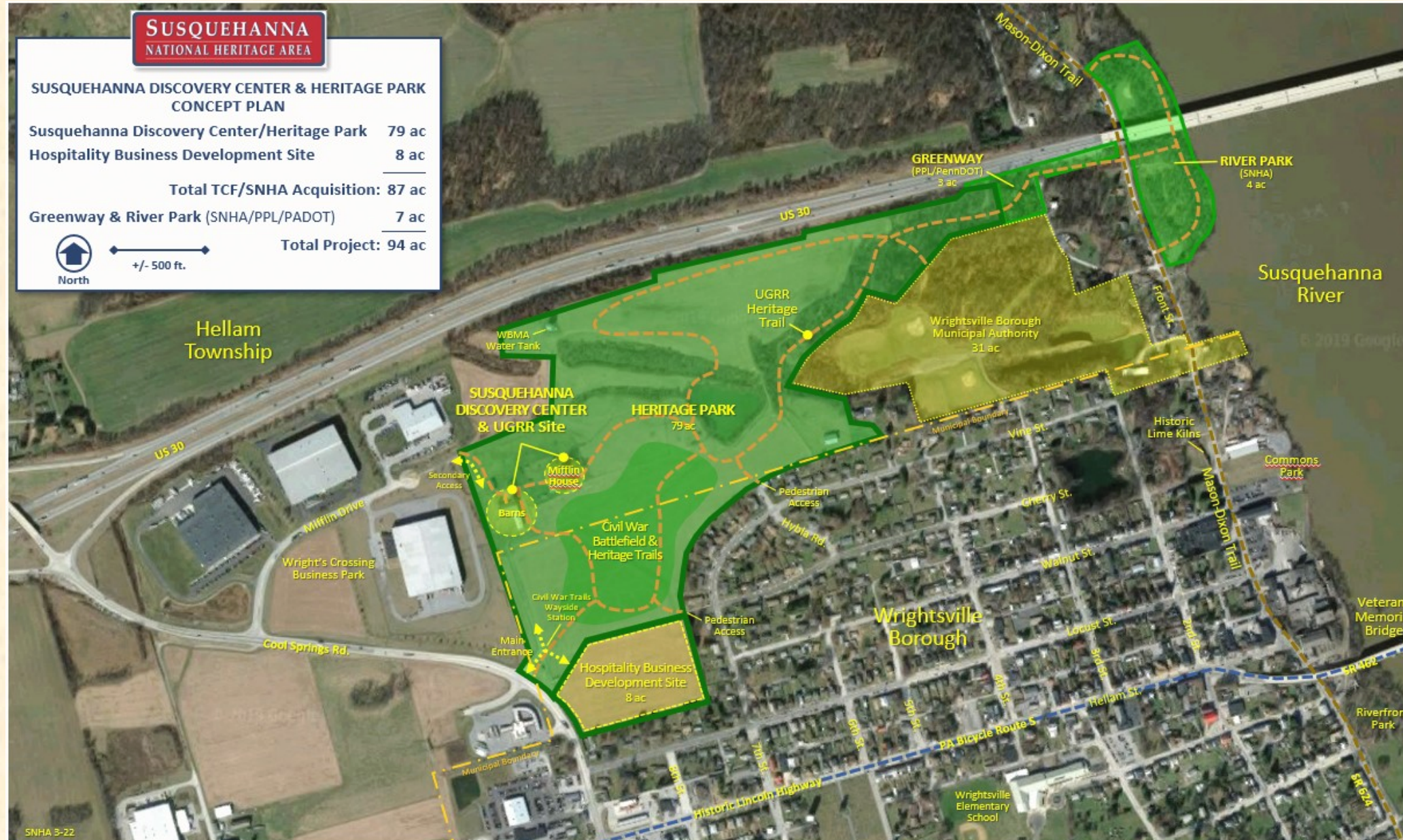
Since 2017, Susquehanna National Heritage Area (SNHA), Preservation Pennsylvania, The Conservation Fund (TCF), York County Economic Alliance, and other partners have collaborated on a community project to preserve the Mifflin House farmstead in eastern York County, an Underground Railroad and Civil War historic site located near the Susquehanna River in Hellam Township and Wrightsville Borough.

Kinsley Properties of York has been developing a business park around the site since the 1990's with the Blessing family, long-time owners of the farm. As development moved east toward the historic farmstead, demolition of the house, barn, and outbuildings was proposed, leading to much community debate and legal challenges. In early 2019, the Blessings, Kinsley, and Hellam Township agreed to a two-year moratorium on demolition to allow preservation partners time to develop a concept plan and secure funding.



As an alternative to demolition and industrial development of the site, preservation partners proposed the acquisition and adaptive use of the farm by SNHA as a gateway visitor welcome center and Underground Railroad/Civil War heritage park with a trail to the river. An 8 acre parcel in Wrightsville Borough will be reserved for hospitality business development. The plan includes 87 acres of the Mifflin site and 7 acres of adjacent public and semi-public lands, including riverfront parcels owned by SNHA. An agreement has been reached to purchase the land and implement the concept plan over the next several years.

SUSQUEHANNA DISCOVERY CENTER AT THE HISTORIC MIFFLIN HOUSE & FARM



SNHA DISCOVERY CENTER



MIFFLIN HOUSE UGRR SITE



HERITAGE PARK



UGRR HERITAGE TRAIL



GREENWAY & RIVER PARK



A PLACE TO SHOWCASE AMERICA'S 55TH NATIONAL HERITAGE AREA

After community discussions, site tours, and feasibility studies, the project partners concluded that the Mifflin House and farm presents a unique opportunity for SNHA to lead the planning and development of a new regional visitor destination at the site - a place to learn about our region's significant role in American history and enhance our area's economic vitality. To realize this vision, the project's concept plan includes these features:

SUSQUEHANNA DISCOVERY CENTER - Adaptive use of the historic barns as a world-class visitor destination for America's 55th National Heritage Area, including heritage exhibits, river art galleries, program space, silo lookouts, gift shop, café, and SNHA headquarters.

UNDERGROUND RAILROAD LEARNING CENTER - Restoration of the Mifflin House as a place for learning about our region's role in the Underground Railroad, with an interpretive trail to the river tracing the historic route of those seeking freedom.

HERITAGE PARK - Preservation of the Mifflin farm landscape as a heritage park featuring the Civil War battlefield where Union defenders fought invading Confederates in June 1863, just before the covered bridge across the river was burned to stop their advance, setting the stage for the Battle of Gettysburg.

GREENWAY & RIVER PARK - Linking the Mifflin site to the Susquehanna with a greenway along US30 to a river park with paddlecraft launch, viewpoints, picnic areas, and fishing access.

HOSPITALITY BUSINESS DEVELOPMENT - Future development of well-designed hotel, restaurant, and retail businesses that will attract economic investment and enhance tax revenue for Wrightsville.

ESTIMATED PROJECT COSTS	
Acquisition & Related Costs	\$5,500,000
Design & Construction (Buildings, Pkg, Exhibits, Trails,)	\$11,150,000
Total:	\$16,650,000