

# Annual 2014 Report

NATIONAL HERITAGE CORRIDOR



THE  
last  
green  
valley™





Care for it,  
enjoy it,  
pass it on

## Message from the Chairman

2014 was an exciting year for The Last Green Valley, Inc. (TLGV). The fiscal year started with a celebratory turn as the Grand Marshal in the region's Holiday Dazzle Light Parade, in recognition of the National Heritage Corridor's 20th Anniversary. The year ended with another champagne cork-popping piece of news – our federal legislation was amended to formally change our name to The Last Green Valley National Heritage Corridor, and our federal funding was reauthorized until 2021. While this legislation doesn't guarantee any dollar amount in a given year, it reaffirms that The Last Green Valley National Heritage Corridor is eligible and worthy of continued federal investment.

TLGV is grateful for the support of Senator Richard Blumenthal, who introduced the legislation in the Senate, and Congressman Joseph Courtney, who introduced the legislation in the House. TLGV would also like to thank Senators Elizabeth Warren and Christopher Murphy, and Congressmen Richard Neal and James McGovern, for co-sponsoring this legislation and for their continued support of our National Heritage Corridor.

2014 was also a year of staff transitions. We said goodbye to Charlene Cutler, our Executive Director for 17 years. She accepted a challenging position as the first Executive Director of the Blackstone National Heritage Corridor, and we are excited to continue working with her in her new role. Valerie Imre and Michelle Bourgeois also departed to pursue other opportunities.

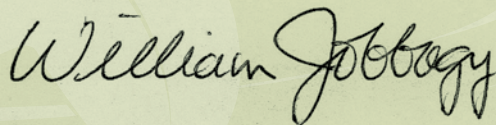
The Board of Directors appointed our Deputy Director, Lois Bruinooge, as Executive Director, and TLGV hired Marcy Dawley as a Project Administrator. Lois is an environmental attorney by trade and has considerable legal and management experience working for non-profits and state agencies. Marcy has been a volunteer Lead Ranger for TLGV for some time and is a welcome addition to our staff.

Walktober was again a huge success, due to the wonderful work of our partner organizations in pulling together more than 160 walks, bikes, paddles, pedals, and special events. More than 60,000 people were able to experience all The Last Green Valley has to offer and we invite you to join us again for the 25th Anniversary of Walktober in 2015.

Tastes of the Valley, our annual feast and fundraiser, also drew a record crowd and raised more than \$20,000 to support TLGV's programs and projects. Again, we could not have hosted such a successful and enjoyable event without the hard work of our volunteers, donors, farms, restaurants, beverage providers, and sponsors.

To all of our members, donors, volunteers and partners, we thank you. We could not provide the depth and breadth of programming that you have come to expect without your support. We work for you in the National Heritage Corridor, and your input is critical to our success. If you have any questions, comments, concerns, or would just like to chat about our work, please feel free to contact Lois or me through the office at 860-774-3300.

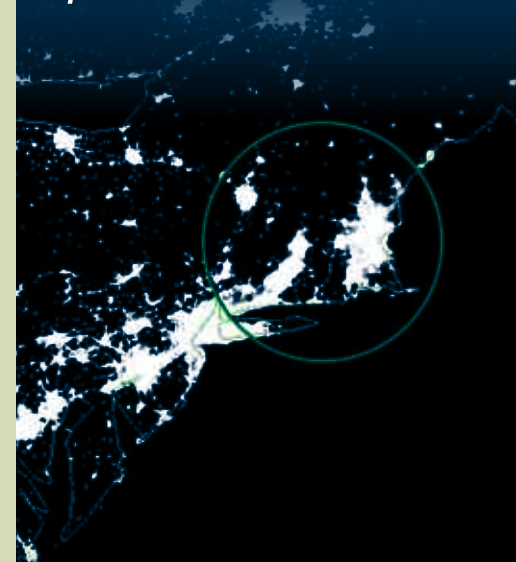
We look forward to continuing to provide high quality programs and events in 2015 that celebrate and conserve The Last Green Valley National Heritage Corridor. Green by day and dark by night, The Last Green Valley is still 77% forest and field. Together, we can care for it, enjoy it, and pass it on.



Bill Jobbagy, Chairman, Board of Directors



Green by day  
and dark by  
night, The Last  
Green Valley  
is still 77%  
forest and field.  
Together, we  
can care for it,  
enjoy it, and  
pass it on.





## TLGV Rangers Share their Love for THE LAST GREEN VALLEY

Friendly TLGV Rangers and other volunteers participated in 40 events, fairs and festivals, helping to educate thousands of people about The Last Green Valley National Heritage Corridor.

In November of 2013, TLGV was also named Grand Marshal of the 2013 Holiday Dazzle Light Parade in Putnam, CT, kicking off the 20th Anniversary of National Heritage Corridor. TLGV entered an impressive float and organized the first TLGV Green Flash Mob of marchers wearing green lights. The Holiday Dazzle

Light Parade is a spectacular event with more than 120 brightly lit floats viewed by 20,000 spectators lining the streets. As Grand Marshal, TLGV helped to establish the first litter-free parade – TLGV supplied trash bags to volunteers from HighPointe Church and spectators, and encouraged them to clean up after themselves along the parade route. TLGV and the Green Flash mob marched again in 2014 with a recreation-themed float and another successful litter-free campaign.

Did you see us in 2014 at these events? Look for us in 2015:

- YMCA Healthy Kids Day in Danielson
- UCONN Earth Day Spring Fling
- Charlton Earth Day Festival
- Sturbridge Lions All American River Race
- Putnam First Fridays
- Putnam Beautification Day
- Charlton Annual Spring Day
- Willimantic Third Thursdays
- Willimantic River Festival
- Southbridge FEST
- Norwich River Fest
- Paddle for a Cure in Brooklyn
- Dudley Grange Strawberry Fest
- Schott Fiberoptics Employee Fair in Southbridge
- Coventry Regional Farmers' Market
- Bozrah Farmers Market
- Lebanon Country Fair
- Dudley Farmers' Market
- Woodstock Fair
- Killingly Cooks & Tomato Festival
- Celebrating Agriculture in Woodstock
- Positively Pomfret Day
- Thompson Community Day
- Fort Hill Farms Balloon Rides in Thompson
- Walktober events throughout the National Heritage Corridor
- Coventry Harvest Day Festival
- Webster/Dudley/Oxford Business & Home Show
- Roseland Cottage Fine Arts and Crafts Festival in Woodstock
- Pumpkin Festival in Putnam

### TLGV BOARD OF DIRECTORS 2014-2015

Bill Jobbagy, *Chairman*  
Coventry, CT

Mike Nelson, *Vice Chairman*  
Norwich, CT

Myra Ambrogi, *Secretary*  
Plainfield, CT

Thomas E. Dufresne, *Treasurer*  
Southbridge, MA

Donna Baron  
Lebanon, CT

Elsie Bisset  
Voluntown, CT

Janet Blanchette  
Thompson, CT

Rick Hermonot  
Sterling, CT

Ed Hood  
Sturbridge, MA

Jennifer Kaufman  
Mansfield, CT

Elaine Knowlton  
Brooklyn, CT

Alix McNitt  
Sturbridge, MA

Norma O'Leary  
Thompson, CT

Wayde Schmidt  
Pomfret, CT

Joan St. Ament  
Woodstock, CT

Jean Sullivan  
Brimfield, MA

Eric Thomas  
*CT Governor's Designee*  
Coventry, CT

Jason Vincent  
Griswold, CT

Mark Winne  
Charlton, MA

### TLGV STAFF

Lois Bruinooge  
*Executive Director*

Bill Reid  
*Chief Ranger*

Sharon Wakely  
*Finance Administrator*

LyAnn Graff  
*Office Coordinator*

Marcy Dawley  
*Project Administrator*

#### Contractors

Christine Armstrong  
*Education Outreach Coordinator*

Jean Pillo  
*Water Quality Monitoring and TRBP Coordinator*

## TLGV Rangers LEAD THE WAY

TLGV Rangers and other volunteers provided more than 900 hours of volunteer service educating people about The Last Green Valley's unique natural and cultural resources – thank you!

Our incredibly helpful and informative Rangers are: Steven Ayer, Christine Armstrong, Tineke Brinks, Janet Blanchette, Steve Broderick, Bill Campbell, Naomi Campbell, Ken Carpenter, Marcy Dawley (Lead Ranger), LyAnn Graff, Lucille Langlois, Kitty Lowenthal, Larry Lowenthal, Mike Mathewson, Cyd Norris, Jean Pillo, Nancy Polydys, Bill Reid (Chief Ranger) and Barbara Vizoyan.

In addition to our Rangers, we'd like to thank several other people who volunteered at the TLGV exhibit booths and member events including: Myra Ambrogi, Tom Brennan, Wendy Brennan, Beverly Butkiewicz, Ken Butkiewicz, Laura Moorehead, Scott Moorehead, Wayne Schmidt and Joan St. Ament.

### TLGV Ranger Talks Connect People to the National Heritage Corridor

Chief Ranger Bill shared his love of The Last Green Valley in 37 presentations to area non-profits and community organizations with an estimated 840 total people in attendance.

- Lebanon Historical Society
- Canterbury Lions Club
- Rhode Island Canoe and Kayak Club
- Mansfield Lion's Club
- Sturbridge Historical Society
- Norwich Sunshine Rotary Club
- Lebanon Senior Center
- Dudley Women's Club
- Thompson Lion's Club
- Coventry Historical Society
- The Overlook in Charlton
- Corbin Library in Webster
- Dudley Senior Center
- LiR, Quinebaug Valley Community College
- Pomfret Senior Center
- Adventures in Lifelong Learning, Three Rivers Community College
- Thompson Recreation/Library
- Scotland Library
- Danielson Rotary Club
- Sturbridge Senior Center
- Oxford Business Association
- Sturbridge Rotary Club
- Lebanon Senior Center
- Finnish American Society
- Franklin Historical Society
- Bartlett High School PASS Program
- Day Kimball Hospital
- Mansfield Public Library
- Association of University Women at Waterford Library
- Griswold Historical Society
- Southbridge Library
- Eastern CT State University Conservation Class
- Series of Ranger talks at the TLGV office in Danielson



Book a TLGV Ranger talk for your organization in 2015. Ranger presentations currently available include:

- *Your Green Oasis: The Forests of The Last Green Valley*
- *On The Wild Side: Exploring the Flora and Fauna of The Last Green Valley*
- *Notable and Notorious: Curious and Infamous Characters from The Last Green Valley*
- *Connecting the Drops: Source to Sea Through The Last Green Valley*
- *Take a Walk in The Last Green Valley*
- *The Last Green Valley: It's Where You Live*



*If you haven't already seen it, watch for Chief Ranger Bill's weekly column in the Norwich Bulletin focusing on places to explore in The Last Green Valley. Look for our press releases and "It's Happening" ads in local publications, and check local cable channels for TLGV appearances. "Like" our Facebook page (greatly enhanced, thanks to Lead Ranger Marcy) to stay connected to The Last Green Valley.*

**We are always looking for more TLGV Rangers and volunteers.**

**Call Chief Ranger Bill at 860-774-3300 to join the fun!**

# Care for it



A. Dabrowski



# Enjoy it

## TLGV Members Have All the Fun

One of the perks of TLGV membership is a monthly member program. This past year, members enjoyed good company and good fun at the following events:

- Stew and Story at The Publick House Historic Inn in Sturbridge, with readings by Kitty and Larry Lowenthal and Barbara Larkin
- Gallery tour of the Benton Museum of Art, UCONN
- A hike along the Nipmuck Trail in Ashford, CT
- Hikes at the Wyndham Land Trust's Spaulding and Rappaport Preserves in Woodstock, CT
- Paddles on the Willimantic and Quinebaug Rivers
- Ranger Talks held at TLGV's office
- Lower Natchaug River Cleanup in Windham
- Tastes of the Valley
- Walktober
- Putnam Holiday Dazzle Parade

**Members, be sure we have your correct email address so you don't miss any of our e-newsletters and announcements.**



## Eagles Love The Last Green Valley Too

The midwinter eagle survey (and our follow-up press release about the survey) has become an interesting way for TLGV to spread the word about the amazing natural resources we have in the National Heritage Corridor. In January of 2014, we placed more than 50 volunteers on rivers, lakes and ponds throughout The Last Green Valley and logged in more than 250 ranger and volunteer hours as we surveyed the skies and waterways for bald eagles. It is no surprise, based on The Last Green Valley's excellent eagle habitat and the number of volunteers we deployed, that we had a record number of bald eagles sightings that morning, at 21. Based on CT DEEP's compilation of the data, that translates to 10 or more bald eagles over-wintering in the region. We know from previous experience that at least four breeding pairs of bald eagles live in The Last Green Valley year-round.



# Pass



## Bringing the Watershed to Classrooms and Camps

TLGV expanded its popular Watershed Education program in 2014 with a small grant from the Environmental Professionals Organization of Connecticut. The 30-minute, hands-on program meets state science standards related to the movement of water and pollutants over the landscape. The program is tailored to middle school students but is easily modified for other age groups.

TLGV was able to reach 2,892 students at 29 schools, camps, and events, connecting them to their watershed and learning about ways to keep our water clean.



Students were able to explore TLGV's table-top watershed model in the following schools, camps, and events:

- Woodstock
- Eastford
- St. Joseph, Thompson
- Mansfield After School Club
- Norwich
- Plainfield
- Webster
- Ashford
- Brooklyn
- Pomfret
- Scotland
- Southbridge
- Canterbury
- YMCA Healthy Kids Day, Danielson
- Canterbury Girl Scouts
- CT Audubon, Pomfret
- 4-H meetings, multiple locations
- Putnam Recreation Day Camps
- Thompson Recreation Day Camps
- Day Camp at Crystal Pond, Eastford/Woodstock
- Camp Woodstock
- Camp Foscett, Charlton
- Plainfield Recreation Day Camps
- Celebrating Agriculture, Woodstock
- Positively Pomfret Day



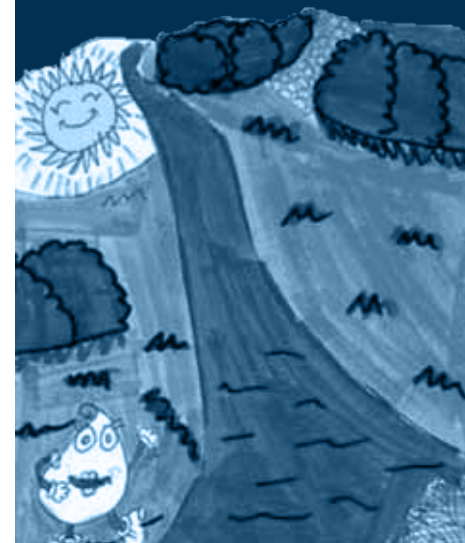
*"The presentation was excellent, and fit right in with our unit on ecosystems. I'm already looking forward to next year."*  
Plainfield middle school teacher



*"The topics covered are important for all of us to continue to be good citizens of our environmental community."*  
Brooklyn middle school teacher



*"Thank you for coming to our classroom...I learned many interesting facts about The Last Green Valley...Whenever we see some litter on the ground or on the storm drains, we are the helpers to keep the earth clean.. We need to pick up."*  
Nathan, a middle school student from Southbridge, MA



**Did we visit your school or camp this year? If not, contact Christine at 860-774-3300 to schedule a program for your students.**



# Care for it



## Keeping The Last Green Valley Clean and Green

For the 3rd year in a row, TLGV supported Earth Month and River cleanups throughout the watershed. 1,147 volunteers removed almost 39,000 pounds of trash from our roadways, parks, trails and waterways. Plastic bags and disposable food service items (cups, plates, forks, knives, spoons) were the most counted items, at 6,382 and 6,396 respectively – an avalanche of plastic that we need to stop in 2015!

TLGV supported cleanups by the following organizations and communities:

- Bozrah
- Brooklyn
- Canterbury Lions
- Coventry
- Eastern CT Conservation District
- First Congregational Church in Woodstock
- Groton Open Space Association
- Killingly
- Natchaug River Young Marines
- Putnam
- Reliance House, Inc.
- Sprague
- Thompson Recreation/ Middle School
- Thompson Together
- Thread City Development
- Thames Valley Chapter of Trout Unlimited
- Webster Dudley Business Alliance
- Windham Chamber of Commerce
- Windham Textile Museum



*“Who knew picking up trash could be so much fun? 197 volunteers picked up 12,960 pounds of garbage in Norwich over 7 months. We have gone above and beyond achieving our goal of finding a project that would help us get to know some of the spiritual groups in our community. We have established relationships, rolled up our sleeves and worked together in the community where we live and serve.”*

Suzee Costa, Reliance House, Inc. of Norwich



## Engaging Volunteers to Monitor and Protect Water Quality

Now in its 9th year, TLGV's water quality monitoring program is in the top 25% of programs nationwide, as all of our methodologies are fully-approved by state and federal agencies, and the data can be used in formal state water quality assessments.

Fifty more volunteers were trained this year, for a total of 110 active volunteers willing to get their feet wet and become stewards of The Last Green Valley National Heritage Corridor.

This year, TLGV volunteers and partners:

- Assisted with tracking down sources of bacterial contamination in Ekonk Brook in Plainfield, CT

- Conducted bacteria monitoring in the French River in Oxford, Webster and Dudley, MA and Little River in Putnam, CT
- Monitored conditions in Webster Lake and South Charlton Reservoir in MA, and Amos Lake and Avery Pond in CT
- Placed temperature data loggers in nine stream locations in northeastern CT in cooperation with CT DEEP.
- Focused river bioassessment monitoring efforts on the smallest streams to help CT DEEP document healthy water habitat in the upper watershed areas.

Water Quality Monitoring Partners include:

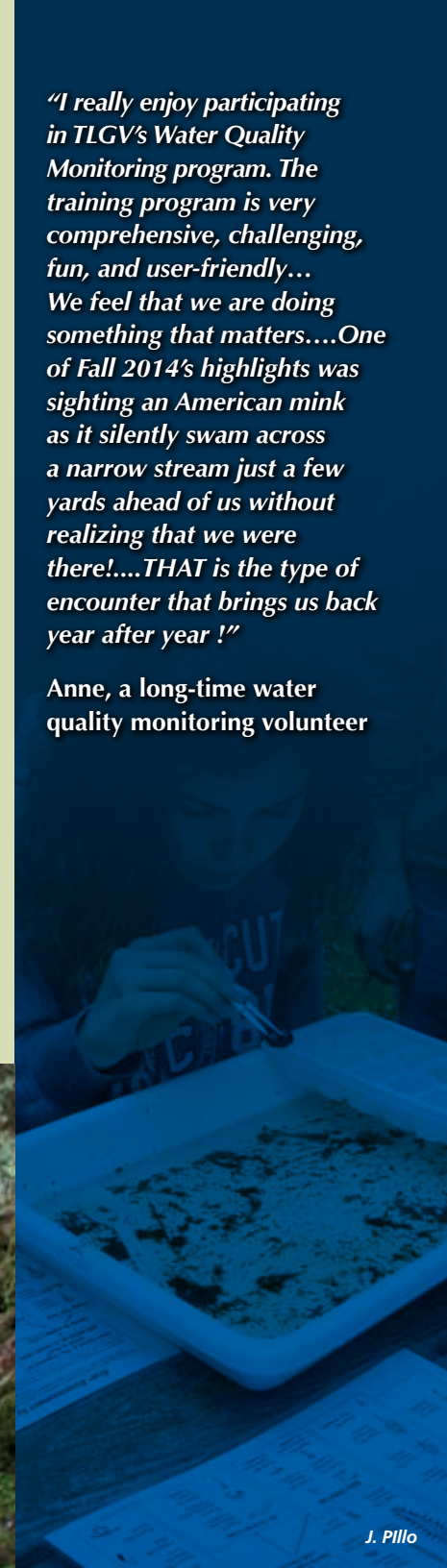
- Eastern CT Conservation District
- CT Dept. of Energy and Environmental Protection
- MA Dept. of Environmental Protection
- Environmental Protection Agency
- CT Audubon Society at Pomfret
- CT Dept. of Public Health
- Northeast District Dept. of Health
- Avery Pond
- Amos Lake Association
- French River Connection
- South Charlton Reservoir Association
- Webster Lake Association
- Webster Dudley Wastewater Treatment Facility

Special kudos go to French River Connection volunteers for completing their 10th year of temperature, dissolved oxygen, pH, conductivity and turbidity data collection in the Massachusetts part of the French River.

Water quality monitoring volunteers were treated to TLGV's annual appreciation event and luncheon, featuring workshops by conservation professionals. This year, Laura Saucier of CT DEEP taught us about fresh water mussels and how volunteers can report mussels they find when collecting other water quality data. Fresh water mussels are living water filters but they are very vulnerable to pollution, and many are endangered or threatened in the northeast.

*"I really enjoy participating in TLGV's Water Quality Monitoring program. The training program is very comprehensive, challenging, fun, and user-friendly... We feel that we are doing something that matters....One of Fall 2014's highlights was sighting an American mink as it silently swam across a narrow stream just a few yards ahead of us without realizing that we were there!....THAT is the type of encounter that brings us back year after year !"*

**Anne, a long-time water quality monitoring volunteer**



# 24 Years ~ Walktober

## Enjoy it



### Walktober Celebrates its 24th Year

Our amazing partners collectively offered more than 160 guided walks, bike rides, paddles and events during October and stretching into November. More than 60,000 people participated, an increase over last year's record-breaking numbers. There is no better way to learn about The Last Green Valley's unique resources than through a Walktober adventure.

TLGV could not have coordinated Walktober without the tremendous support of our 100+ partners and major sponsors: Millenium Power, Savings Institute Bank & Trust, Southbridge Savings Bank, Ivanhoe Tool & Die Company, CME, Eastern Savings Bank, Savers Bank, UNFI, Newell & Betty Hale Foundation, ARS Products, Citizens National Bank, Farm Credit East, LeBoeuf Rubbish Removal, Putnam Plastics, and the Towns of Bozrah, Chaplin, Coventry, Franklin, Hampton, Killingly, Pomfret, Putnam and Sprague. Thank you!



*"I am writing to thank leaders Sue and Tom from the Mansfield Parks Advisory Committee, their helper Griffen and TLGV for today's hike at Dunhamtown Forest in Mansfield. We found out about this hike through Walktober from TLGV. I went on the 10 am hike (1.5 hours and 1 mile) with my 6 year old, my 2 year old and 6 month old children. The games were engaging and suitable for my 6 year old as well as my 2 year old. The terrain, duration and distance were just right for our wide-ranging levels....I would love to see this activity on next year's calendar of events...Thanks again for a wonderful day!"* – Melissa, a grateful Walktober participant

### Meet Mr. Walktober 2014 – Nick Bellantoni

Dr. Nicholas Bellantoni recently retired as the state archaeologist with the CT State Museum of Natural History and Archaeology Center in the College of Liberal Arts & Sciences at the University of Connecticut. Over the years, Nick has brought history to life for hundreds of Walktober participants. He is a great story teller, able to share vast amounts of information, and is incredibly entertaining. Anyone who has been on his walks knows that Nick Bellantoni is a rock star in the Walktober world.



## Marketing The Last Green Valley's Strongest Assets

TLGV continued to promote The Last Green Valley as a destination by marketing in Yankee Magazine, the CT Visitors Guide, the Central Mass. Convention and Visitors Bureau, and other regional publications. Advertising materials continued to focus on our strongest assets - nature-based recreation, agriculture, and small town New England experiences.

### Promoting Local Products and Talents through the 2014 Guide

TLGV's 2014 Guide featured 177 local businesses and attractions in The Last Green Valley. The Guide is distributed in more than 65 regional locations, state visitor centers, and mailed to thousands who see TLGV's ads and request information each year. The Guide is also incorporated into the TLGV web-based destination map, offering more visibility for business partners.

As the primary fulfillment piece for inquiries about the National Heritage Corridor, the Guide also features editorial content highlighting major seasonal events, each of our towns, agricultural products, hikes, pedals, water trails, flora and fauna, historic sites, museums, characters, and itineraries for great days in The Last Green Valley.

### Green Lights for The Last Green Valley

Residents, businesses, municipalities and non-profits took part in TLGV's slightly off-kilter festival from mid-February through mid-March. We love to promote local businesses during this traditionally slow time of year, and herald the arrival of a green spring.

- Best Collaborative Display - to Willimantic, for the Green Lights Screen Project. Original artwork was projected onto the windows of the Kerri Art Studio and Gallery in a stunning display. Thread City Development, Inc., Willimantic Screen Project, Kerri Art Studio and Gallery, and Willimantic Brewing Company collaborated with Professor June Bisantz and art students from Eastern Connecticut State University who provided the images.
- Best Community Display - Green Lights in Davis Park, Danielson. Killingly Parks and Recreation incorporated green lights into their holiday display.
- Best Public Event - The Green Valley Festival Premier and Art Exhibition, Silver Circle Gallery, Putnam. The evening was the premier of the Green Valley Festival film from

Bond Brothers Entertainment and also featured G. Leslie Sweetnam's aerial photography of The Last Green Valley.

- Best Business Promotion - Celebrations Gallery, Pomfret. Celebrations used Green Lights as a marketing tool, offering a special TLGV Tea, as well as a unique outdoor display.
- Most Creative Activity - Jamie Kordack, US Army Corps of Engineers, for the Green Lights Geo-Dash and the Green Full Moon Walk.
- Best Residential Display - Lenore Felpel and Jim Hamel of East Killingly.

### Updated and Expanded Interpretive Publications

TLGV updated and expanded three of its most popular publications; all three are available from the TLGV website at [www.thelastgreenvalley.org/tlgv/publications](http://www.thelastgreenvalley.org/tlgv/publications).

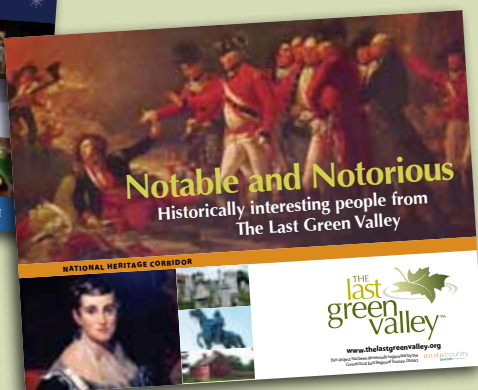
- Notable and Notorious – Historically Interesting People from The Last Green Valley;
- For the Common Good – A Guide to the Historic and Scenic Town Commons and Greens of The Last Green Valley; and
- Wild Guide to The Last Green Valley.



*One of our most enjoyable projects in late summer each year is to host a photo contest for the upcoming year's calendar. Our 2014 contest (for the 2015 calendar) drew close to 100 entries. The 2015 - A Beautiful Year in The Last Green Valley® calendar is filled with exquisite pictures and interesting tidbits about the natural and cultural history of the National Heritage Corridor. This year's coveted cover shot of an "Old Farm Truck" reposing peacefully in the shade beside an old stone wall, was taken by Sandee Harraden of Woodstock, CT.*



*And be sure to visit [www.thelastgreenvalley.org](http://www.thelastgreenvalley.org). TLGV finished a major overhaul of the website this year, with a completely new design and operating system. The new website features an expanded destination map and events calendar, a blog, and interactive options such as Monthly Quizzes and Weekly Photo Contests.*





## Working Collaboratively on Regional Issues – the Thames River Basin Partnership

The Thames River Basin Partnership (TRBP) is a diverse coalition of government and non-profit organizations, educational institutions, industries and municipalities with a shared vision of natural resource conservation in the greater Thames River watershed.

The Last Green Valley forms the heart of the Thames River watershed, and TLGV funds a part-time coordinator for the TRBP. Four times each year, TRBP partners meet to share information, network, and collaborate on projects that are compatible with the TRBP Plan of Work.

TRBP's flagship event is the annual Floating Workshop, which features a different part of the watershed each



*Pontoon boats hooked together make a floating classroom on Pachaug Pond as part of TRBP Floating Workshop XIV*

year. This year focused on the Pachaug River – its history, current economic development challenges shared by Griswold and Voluntown, and the pros and cons of lake drawdowns as a means of controlling aquatic weeds. After the workshop, a tasty networking session was hosted by Buttonwoods Farm.

## Protecting Forest Resources - Southern New England Heritage Forest Partnership

TLGV continued its work as a partner in a New-England wide project funded by a US Forest Service Grant through the North East State Foresters Association. All of our Last Green Valley communities are included within the Southern New England Heritage Forest. Our region was one of four priority landscapes in New England selected for a pilot project.

Our goal is to strengthen forest stewardship and conserve the many values of the region's forest landscape for future generations. The pilot project was designed to engage landowners who have never been involved in forest management or conservation in the past.

We trained Woodland Ambassadors – people passionate about their woods - to conduct informal woods walks and events. Twenty two events, drawing 305

people, were held during the pilot project throughout the Southern New England Heritage Forest.

The majority of attendees had never spoken with a consulting forester, 75% had never spoken with a land trust or government agency to learn about conservation options, and 90% had never consulted an estate planning professional to discuss long-term options for their land. After the workshops, about half the participants said they were now interested in speaking with a forester, 40% said they are likely to contact a land trust or agency to learn about conservation options, and 30% are likely to consult with an estate planning professional. All of the data collected through this project will be used to target the next steps landowners can take towards forest management and conservation.

Project partners included:

- MassConn Sustainable Forest Partnership
- Northern Rhode Island Conservation District
- Opacum Land Trust
- Providence Water
- RI Resource Conservation & Development Area Council
- State Forestry Agencies (CT DEEP, RI DEM, MA DCR)
- The Nature Conservancy
- University of CT Cooperative Extension
- University of Rhode Island
- USDA – NRCS
- Highstead Foundation
- Yale University
- North East State Foresters Association

Care for it

## Striving Towards Sustainable Communities

More than 60 people attended a free workshop on new strategies for Brownfields development. TLGV, in cooperation with EPA, CT DEEP, and private sector consultants and attorneys, hosted the workshop covering new funding resources, streamlined cleanup regulations, and legislative changes including liability relief.

Immediately following the workshop, attendees toured the Willimantic Whitewater Partnership's property on Bridge Street, to learn about cost-effective strategies for dealing with site contamination, and see firsthand the potential of this property as a nexus of community revitalization.

TLGV continued to build capacity at the municipal and regional levels by providing assistance over the phone, drafting support letters, and attending regional meetings of interest. TLGV supported:

- Coventry and Mansfield's grant application for the control of aquatic invasive species in Eagleville Lake
- Norwich Community Development Corporation's proposal to eliminate blight at the

Uncas Leap property in historic Yantic Falls

- Coventry's application to the Main Street Investment Fund program to continue its efforts to revitalize Historic South Coventry Village
- Sprague's grant application for funds to purchase the 111-acre Robinson Property
- An environmental consultant's efforts to increase connectivity in the Barbers Hollow Brook system and to restore an Eastern Brook Trout fishery in Oxford
- Preston's grant applications to the Environmental Protection Agency for cleanup of the former Norwich State Hospital property
- Eastern Connecticut Resource Conservation and Development Area Inc.'s (RC&D) grant application, "AGvocating for Agricultural Viability - Leveraging Partnerships and Knowledge into Action."

Lois Bruinooge continues to represent The Last Green Valley on the Eastern CT Resource Conservation and Development Council, and as a member of the CT Greenways Council.



## Increasing Recreational Access to our Waterways

TLGV, its partners and volunteers worked hard to maintain and improve more than 60 miles of National Recreation Trail on the Quinebaug and Willimantic Rivers.

The water trails project is funded by a CT DEEP Recreation Trails grant, and receives technical assistance from the National Park Service Rivers and Trails Program.

New kiosks were constructed and installed at public launches on the Willimantic River at six locations by students from Ellis Technical High School. New kiosk information signs were developed in close coordination with the Willimantic River Alliance. A ceremony was held at River Park in Mansfield to dedicate the new Willimantic River kiosks. TLGV also worked with an Eagle Scout to construct a new kiosk at the CT DEEP Fish Hatchery in Plainfield.

TLGV and its partners led numerous paddles, and continued to publicize all water trail paddles and development efforts through *Currents from Source to Sea*, its periodic e-newsletter.

TLGV volunteers were also trained in the Universal Trails Accessibility Process, and will be working to assess all of the public boat launches in the next year. The training was provided by the US Army Corps of Engineer trails expert, Tom Chamberland.

Project partners include:

- Willimantic River Alliance
- NPS Rivers and Trails Program
- US Army Corps of Engineers
- CT Dept. of Energy & Environmental Protection
- CT Light and Power
- Ellis Technical High School
- Towns of Dudley, MA, and Brooklyn, Canterbury, Killingly, Mansfield, Pomfret, Putnam, Stafford, Tolland, and Willington, CT

*"When I moved to this beautiful place over 15 years ago, and learned that there were threats that would make this area just like the place I left behind, I heard myself say, 'Somebody needs to do something to stop that from happening.' Then it dawned on me: I am somebody."*

**Jean Pillo, TLGV Ranger, Volunteer Water Quality Monitoring Program Coordinator, and Thames River Basin Partnership Coordinator**



## Connecting Local Farms to Local Restaurants - Tastes of the Valley

TLGV held its 9th Annual Tastes of the Valley feast and fundraiser in September. The event celebrated locally-grown foods, matched local farms to local chefs, and raised funds for the National Heritage Corridor. Each year, local restaurants prepare tasting portions of delicious menu items using food and beverages grown and produced in The Last Green Valley.

More than 150 participants enjoyed the creative cuisine and glorious fall weather.

- Bella's Bistro in Putnam, CT, was voted as the "Best Cuisine of the 2014 Tastes of the Valley," for its braised pork bellies over acorn and butternut squash chutney

topped with apple slaw and a reduction of Hosmer Mountain root beer, Taylor Brooke wine and tomatoes using products from 18th-Century Purity Farm, Buell's Orchard, Ekonk Hill Turkey Farm, Hart's Greenhouse, Lapsley Orchard, Hosmer Mountain, Taylor Brooke Winery, and Wayne's Organic Garden.

- Honorable Mention was awarded to The Inn at Woodstock Hill in Woodstock, CT, for its chilled peach & black currant soup and roasted vegetable salad with



herb roasted chicken & goat cheese, using products from 18th-Century Purity Farm, Buell's Orchard, Chase Road Growers, Ekonk Hill Turkey Farm, Hart's Greenhouse, Meadowstone Farm, Lapsley Orchard, Maple Lane Farms, and Wayne's Organic Garden.

- Honorable Mention was also awarded to The Publick House in Sturbridge, MA, for its pan seared turkey with roasted blue hubbard squash, sauted lacatino kale, organic garlic and shallots, with a Taylor Brooke Autumn Raspberry wine reduction; their dish was created using products from Ekonk Hill Turkey Farm, Lapsley Orchard, Palazzi Orchard, and Taylor Brooke Winery.

- The "Best Beverage" competition resulted in a four-way tie between Black Pond Brews, Sharpe Hill Vineyard, Taylor Brooke Winery, and Westford Hill Distillers.
- Many other restaurants, beverage providers, and farms made generous contributions to this event, including: Blackmer Farm, Devon Point Farm, The Farmer's Cow, New Boston Beef, We-Li-Kit Farm, 85 Main, Cafémantic, Grill 37, Heirloom Food Company, The Mansion at Bald Hill, Marty's of Dudley, Mrs. Bridges' Pantry, Pioneer Brewery, Oliver Wight Tavern,



The Purple Carrot, Soleil & Suns, Willimantic Brewing Company, The Vanilla Bean Café, and Vienna Restaurant.

TLGV raised more than \$20,000 to support its programs, in large part due to its generous sponsors:

- Platinum Level - Fiberoptics Technology Incorporated, Rebecca Harvey, and The Mansion at Bald Hill;
- Gold Level - Putnam Bank, Keith & Elaine Knowlton, and Savings Institute Bank & Trust;
- Silver Level - Titan Energy, Millenium Power, and Southbridge Savings Bank.

In addition, dozens of local businesses contributed raffle and auction items - thank you all!

Pass it on

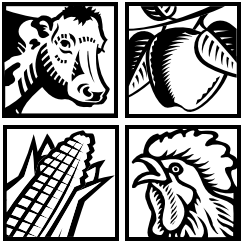
## Strengthening Farm Friendly Communities - AGvocate Program

The AGvocate Program, begun as a pilot in The Last Green Valley, received a grant from the CT Department of Agriculture to expand the concept statewide in 2014. The AGvocate works with municipalities to strengthen the farm-friendliness of local regulations and to improve the long-term viability of

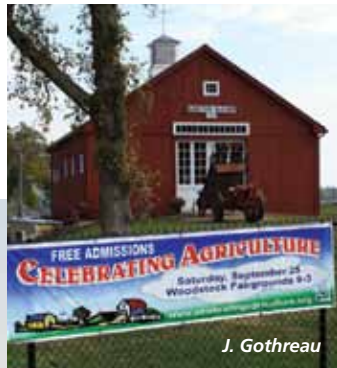
agricultural businesses within each community. TLGV is a member of the AGvocate Steering Committee and provides time, expertise, and other in-kind services to the project.

The fourteen original AGvocate towns have continued to host promotional events and educational forums, to meet quarterly in a regional network, and to continually improve municipal planning, zoning, and tax requirements to benefit agricultural businesses.

# AGVOCATE



ADVOCACY FOR  
LOCAL AGRICULTURE



J. Gothreau

## Helping Farmers Succeed - Mastering the Business of Agriculture (MBAg)

The MBAg Program was designed to provide business planning assistance to farmers to increase small-midsize farm viability, through an in-depth educational program culminating in the production of individualized business plans. It was supported by a grant from USDA and faculty support from UConn.

In 2014, sixteen farms participated in the 10-week course, and one new farm audited the course. Most farms had multiple attendees which brought the attendance to 31 individuals. A total of 2,256 acres and 51 full-time-equivalent jobs were affected by the program.

Attendees had a wide range of products including livestock, fruit, produce, value added, and forestry. The number of years the farms had been in existence ranged from 1 year to 142 years. Several were exploring alternative markets or products to expand their sales.

Based on participant evaluations, the course significantly increased participant's knowledge of farm business management, the value of planning, marketing, budgeting, goal setting, and writing a business plan. 100% of the participants would recommend the class to others.

*"This program acted as a good push to our farm to plan instead of 'do' and 'react.'"*



*"Extremely eye-opening class. I think it should be a requirement for farmers."*



*"This course will help my farm become more profitable."*



# 2014 Financials

Balance Sheet for The Last Green Valley, Inc. as of September 30, 2014  
Audited Financial Statement

## Assets

### CURRENT ASSETS:

Cash	\$ 203,168
Grant Receivable	39,131
Inventory	2,100
Prepaid Expenses	3,891

**Total Current Assets 248,290**

### Property and Equipment:

Machinery and Equipment	25,842
Less Accumulated Depreciation	(25,421)

Net Property and Equipment 421

**TOTAL ASSETS \$ 248,711**

## Liabilities and Net Assets

### CURRENT LIABILITIES:

Accrued Expenses	13,813
Total Current Liabilities	13,813

**TOTAL LIABILITIES \$ 13,813**

### NET ASSETS:

Unrestricted 234,898

**Total Net Assets 234,898**

**TOTAL LIABILITIES AND NET ASSETS \$ 248,711**

## FY 2014 INCOME SOURCES

National Park Service	\$ 677,089
Sales – Merchandise	1,168
Grants	50,269
Contributions	3,021
Memberships/Fees	94,161
Interest Income	484
Advertising Income	15,380
Fundraising Event	25,060
Members' Activities	870

**TOTAL REVENUE \$ 867,502**

## FY 2014 EXPENSE ALLOCATIONS

Programming	637,970
Management (Admin/Overhead)	113,632
Fundraising	48,691

**TOTAL EXPENSES \$ 800,293**

## Thank you to all TLGV Members & Donors

### \$10,000+

First Niagara Bank  
Millennium Power Partners, L.P.

### \$5,000+

Bill & Silvia Jobbagy  
Keith & Elaine Knowlton  
Savings Institute Bank & Trust  
Southbridge Savings Bank

### \$1,000+

ABC Rent A Tent  
Anonymous (2)  
P. Bradford Cheney  
CME Associates, Inc.  
Elaine Crooke  
Charlene & Doug Cutler  
Eastern Savings Bank  
John & Joan Gray  
Rebecca M. Harvey  
Marjorie L. Hoskin  
Ivanhoe Tool & Die Co., Inc.  
The Mansion at Bald Hill  
Mills Family Charitable Trust  
Newell & Betty Hale Foundation  
Nancy Polydys  
RE/MAX Bell Park Realty, Inc.  
Savers Bank  
Wayde & Mary Beth Schmidt  
United Natural Foods, Inc.  
Vienna Restaurant & Historic Inn

### \$500+

85 Main  
Myra Ambrogi  
Angell House Design  
Denise Archambault  
ARS Products  
Bella's Bistro  
John Boland &  
Susan Preston Boland  
Lee & Julie Boltz  
Shep Boote & Heath Drury Boote  
Cafemantic  
The Citizens National Bank  
Jeff Conrad

Danielson Surplus Sales Inc.  
Dexter-Russell, Inc.

Jim & Nancy Dougherty  
Thomas & Nancy Dziki  
Farm Credit East  
First Congregational Church  
Women's Fellowship

Grill 37  
Richard Hermonot  
Inn at Woodstock Hill  
Bruce & Donna Kosa  
Ellen Lehtimaki  
William & Martha MacLaren  
Jeffrey & Amy Miller  
Oliver Wight Tavern  
Ralph & Cecilia Otto  
Jeff & Lindsay Paul  
Publick House Historic Inn  
Irving & Dorthea Pulsifer  
Putnam Bank  
Putnam Plastics Corporation  
Taylor Brooke Winery

### \$250+

Anonymous (2)  
Bed and Breakfast at  
Taylors Corner  
The Bulletin  
Margaret Campanelli  
Betty Challgren  
The Christmas Barn  
Click, Inc.  
Roberta Cook  
Peter & Dawn Curry  
Marcy Dawley & Bob White  
Joe & Jean Drake  
Fitzgerald & Halliday, Inc.  
Sharon Gabiga  
Golden Lamb Buttery  
Thomas & Donna Hawkins  
Charles F. Kane, Jr.  
Lucille A. Langlois  
Lapsley Orchard  
Leboeuf Rubbish Removal, Inc.  
Kenneth E. Mahler &  
Christine A. Strick

Peggy & Christopher Mc Kleroy  
Old Sturbridge Village  
Joyce M. Rivers  
Janet Robertson  
Faith A. Robinson  
Sharpe Hill Vineyard  
Silver Circle Gallery  
Soleil & Suns Bakery  
G. Leslie Sweetnam  
Titan Energy  
Town of Chaplin  
Town of Coventry  
Town of Hampton  
Town of Pomfret  
Town of Putnam  
Town of Sprague  
Vanilla Bean Café  
Wild Goose Studio  
Willimantic Brewing Co.  
Willimantic Food Co-op

### \$100+

18th Century Purity Farm  
Adept Bodywork  
The Adventure Park at Storrs  
Allen Hill Farm, LLC  
Alpaca Obsession, LLC  
America's Best Value Inn  
Joellen Anderson  
Anonymous (3)  
Archambault Insurance Associates  
Arts & Framing  
Dan & Mary Atwood  
B.C.S. Co., Inc.  
A. David & Margaret Babbitt  
John Baldwin  
Marilyn & Peter Barlow  
The Barn at Gray Mare Hill  
Guest House  
Donna Baron  
Ann Barry & Dennis Landis  
Bed & Breakfasts of Mystic County  
John & Janice Benda  
Ronald Benoit  
Berkshire Hathaway  
Home Services



Black Pond Brewery  
Blackmer Farm  
Dean & Sandra Blanchard  
Janet & Dennis Blanchette  
Bogey Lanes  
Bond Brothers Entertainment  
Booklover's Gourmet  
Bozrah Farmers Market  
Bristol-Myers Squibb Co.  
Steve & Karen Broderick  
Brooklyn Historical Society  
Jim & Helen Bruinooge  
Buell's Orchard  
David & Nancy Bull  
Business Systems &  
Incentives, Inc.  
Canterbury Lions Club  
Cedar Ledge Tree Farm  
Celebrations Gallery &  
Shoppes  
Charlie Brown Campground  
Charter Communications  
Chase Graphics  
Warren & Marguerite Church  
Circle C Campground, Inc.  
Jane Cook & Chip Gough  
Richard & Mary Cooper  
Colleen & Robert Cording  
The Cottage House  
Courthouse Bar & Grille  
Crabtree & Evelyn  
Creamery Brook Bison  
CT Audubon Society  
Carolyn Cutler  
Mary Lou Davis &  
Steve Gottlieb  
Faith Damon Davison  
Cornelia Dayton  
Deb's Place  
The Dinosaur Place at  
Nature's Art Village  
Dog Lane Café  
David & Evelyn Duffner  
Thomas & Lynne Dufresne  
Ann Dunnack  
Lucian Dzialo

The Farmer's Cow  
The Farmer's Cow Calfe &  
Creamery  
Mary & Ken Feathers  
Tony Felice & Marybeth  
Gorke-Felice  
Lenore Felpel & Jim Hamel  
Linda C. Felt  
First Congregational Church  
of Woodstock  
Flying Carpet Studio  
John Folsom  
Kerstin Forrester  
Fort Hill Farms & Gardens,  
LLC  
Don & Janice Francis  
Paul & Donna Frenette  
Friendly Spirits Liquor Store  
Frog Rock Rest Stop, LLC  
Roger & Nancy Gale  
Gallery at the Wauregan  
Karen Gallo  
Garden Gate Florist  
Janet Garon  
Tom & Nancy Gerseny  
Ron & Norma Gingras  
Merrill Ann Gonzales  
Dave Goodrich  
Albert Gosselein, Sr., M.D.  
Goudreau's at Nash's  
Garden Center  
Governor Samuel  
Huntington Trust  
LyAnn Graff & Ken Carpenter  
Sonia & Kevin Greene  
Karen Greer  
Ann Gruenberg  
Roslyn Harrington  
Russell F. Harris  
Heart & Home  
Steve & Leesa Heath  
Heirloom Food  
Highland Campground  
Steve & Susan Hogan  
The Hoot  
Deb Hopkins & Jim Poland

Hull Forest Products, Inc.  
Hurme Radio TV & Appliance  
Patricia Hynson  
J & D Civil Engineers, LLC  
Jeff Helgerson Excavating,  
Inc.  
Jessica Tuesdays  
Faith L. Johnson  
William Johnson  
Doug Kehl  
Quentin & Margaret Kessel  
Killingly Historical Society  
King's Inn  
Hans & Christina Koehl  
Lakeview Marine -  
Paddlesport Rentals  
Landon Tire, Inc.  
Leslie Lavallee  
Law Office of  
Andrea L. Truppa  
Gary & Frietha Lawrence  
Lebanon Historical Society  
Museum  
Scott & Rebecca Lehmann  
Bonnie & Gary Lipstreu  
Lisa Andrews  
Lord Thompson Manor  
Love My Art  
Larry & Kitty Lowenthal  
Mansfield Downtown  
Partnership  
Mansfield Drive-In Theatre  
& Marketplace  
Maxine Marcy  
Lisa Markham  
Diane & Jeffrey Marshall  
Marty's of Dudley  
Walter & Carolyn McGinn  
Meadow Stone Farm  
David Mitchell  
Morning Beckons Farm  
David J. Morris  
Mrs. Bridge's Pantry  
Nathan Hale Inn &  
Conference Center  
David & Karen Nelson  
Michael J. & Tenley G. Nelson

Northeastern CT Chamber  
of Commerce  
OFS Fitel, LLC  
Ernest & Norma O'Leary  
Carol Oliver  
Opacum Land Trust  
Oxford Business Association  
John & Patricia Papini  
Ken Parker  
Parker Memorials & Stone  
Co.  
David Patenaude Sr.  
Peppertree Camping, Inc.  
Pine Hill Alpaca Farm, LLC  
Pioneer Brewing Company  
Pizza Pizzazz  
Plainfield Lions Club, Inc.  
The Purple Carrot  
Putnam Business Association  
Howard Raphaelson  
Ken & Nancy Rawn  
Rawson Materials  
William B. Reid  
Bill & Ellen Rewinski  
Katharine Richardson  
Peter Rimkus &  
Debbie Myers  
River Bend Campground  
John & Linda Rodolewicz  
Rolf Bodyworks  
Roseland Cottage  
Irene Ross  
James & Deborah Russel  
Salon One Day Spa  
Sawmill Pottery  
Gerald W. Sazama  
Scranton's Shops  
Semaki & Bird  
Kevin & Linda Shaw  
John & Nancy Silander  
Slater Memorial Museum  
Caroline E. Sloat  
Evelyn Cole Smith  
Lon & Susan Smith  
Mark & Debby Smith  
Someplace Special

Southbridge Hotel &  
Conference Center  
Joan St. Ament  
Dr. & Mrs. Robert Stetson, Jr.  
Sturbridge Lions Club  
Sullivan & Company Real  
Estate, LLC  
Thomas & Sandra Swale  
Sweet Emotions Candy  
Nancy & Janina Swiacki  
Barbara Tate &  
Jon Kornhauser  
David Taylor  
Laura Tedeschi  
TEEG  
James & Elaine Tennis  
Eric Thomas  
Town of Killingly  
Trink-et Shoppe  
Carol Tschirpke  
Variegated Foliage Nursery  
Village Electric  
Robert & Susan Vincent  
Cristine M. Waldron  
Walter & Carolyn McGinn,  
DMD  
Kent & Mary Weaver  
Webco Chemical Corp.  
Gary & Carol Weed  
Weiss & Hale Financial, LLC  
We-Li-Kit Farm  
Westford Hill Distillers  
William Benton Museum  
of Art  
Ben Williams  
WINY-AM Radio Station  
John Wolchesky  
Lucy Wong  
Woodstock Merchants  
Woodstock Orchards, LLC  
Loretta Wrobel  
Wyndham Land Trust, Inc.  
David & Marjorie Yeager  
William J. Zenko

**\$50+**  
Access Oxford, Inc.  
Carol Adams  
Advanced Back & Wellness  
Center  
Dean & Suzanne Albro  
Alexanders Lake  
Homeowners Assoc.  
Susan E. Allen  
American Association of  
Univ. Women  
Anonymous (6)  
Arc Emporium  
Barbara & Doris Barrett  
Russell R. Becker  
David & Alice Belden  
Donald S. Berry  
Alton & Jill Blodgett  
Thomas & Kathy Borner  
Robert & Katherine Boucher  
Loring Boyden  
R. Sky Bridgman  
Robert Briere  
Mary & Truxtun Brodhead  
Ross N. Brudenell, Jr.  
Susan Burns  
Morris Burr  
William Murray Buttner  
Capen Hill Nature Sanctuary  
Charles Carey  
Richard Carpenter  
Ted & Susan Chambers  
Beverly Champany  
Chase Road Growers  
Craig & Mary Cheyne  
Anne Christie & Steve Russo  
Dale Coud  
Russ Cohen  
Maureen Combs  
Connecticut Eastern  
Railroad Museum  
Robert & Judith Cornoni  
Ernie Crandall  
CT Dept. of Energy &  
Env. Prot.  
Robert Curtis

Catherine D'Agostino  
Danielson BPOE Lodge  
#1706  
Daughters of the Holy Spirit  
John F. Dean  
Michael DeCesare &  
Afshan Jafar  
Caroline Delaney  
Christopher & Kathleen  
Demers  
Susan Devokaitis &  
Charlie Weedon  
Devon Point Farm  
Digiplex Lisbon 12  
Henry & Pat Dobush  
Eastern CT Regional  
Tourism District  
Eileen D. Brown Charitable  
Trust  
Mary Ellen Ellsworth  
Ernie & Sandy Staebner  
Fairvue Farms  
Falcon Farm  
Brigitte Falke  
Finnish-American Heritage  
Society  
Thomas Foley, Jr.  
Laura & John Foxx  
Franklin Historical Society,  
Inc.  
Eileen G. Fritz  
Peter & Judy Georg  
Joy & John Glynn  
Bruce & Sherry Goldman  
Barry Gorfain &  
Debbie Tedford  
Governor Jonathan Trumbull  
House Museum  
Gabrielle Gratton  
Anne & Barry Greene, Jr.  
Paul Grenier  
Greyledge Tree Farm  
Guns of Norwich Historical  
Society, Inc.  
Roswell & Gretchen Hall  
Heifer International  
Paul & Ann Hennen

Hickory Ridge Tree Farm	Norwich Community	Voluntown Economic	Dorothy Billington	Elizabeth Delhaie, Sr.	Alison Hill	Joan Marschall
Edwin Hinkel	Development Corporation	Development Comm.	Ruth Blakney	Ken & Sally Demars	John Hoadley	Jeff & Cheryl Mathieu
Hitchcock Free Academy	Thomas & Marie Olson	Joseph Wade	Claire Bolduc	Howard B. Denslow	Elaine Hodge	Sara May
David R. Hoey	Robert Paladino	Susan Waldron	Richard Booth	Susan DeSilver	Don & Rachel Holmes	Dale & Judith Maynard
Robert & Leslie Holland	Palmer Arboretum	Wayne's Organic Garden	Charles & Rita Borovicka	Beth Desjardin	Katherine Holt	William Maynard
Eleanor W. Hubbard	Evelyne Parizek	Lynn & Donna Weaver	Aaltina Brinks-Boersma	Clare Despathy	Jim & Brenda Houghton	Carole McCarthy
Rebecca S. Ikehara	Bruce & Linda Parsons	Westfield Congregational	Lennox Brodeur	Mary Rose Deveau	Carolyn Huff	Jean & Jack McClellan
John Ilewicz	Christine Petersen &	Church, UCC	Lois Bruinooge	John & Lauren Dignam	Tom Hughes &	Bill & Louise McDermott
George & Judith Jackson, III	Christian Wagner	Cathy & Shane White	Sue & Nick Buehler	Caroline Driscoll	Andrea Amato	Kathy McGrath
Jonathan Trumbull Jr. House	Gary Powell	John & Kathryn White	Karin Burlingame	Mark & Dorothy Drobney	Lorraine Jencik	Loretta McHugh
Museum	Prindle Pond Conf. Center	Robert & Pauline White	Ken & Beverly Butkiewicz	Donald & Judith Ducheneau	Robert E. & Joan Johnson	Joyce Meader
Jorgensen Center for the	Janice Putnam	Jim & Joyce Wicks	Tony Bys	Lucille K. Duhamel	Sandra Johnson	Sandra Mello
Performing Arts	Quinebaug Valley	Susan Wiley	Michael & Vivian Camara	Kristine Durocher	Mark & Sue Johnston	Rich & Ann Merritt
Joshua's Tract Conservation	Community College	Willimantic Whitewater	William & Naomi Campbell	Eastern CT Conservation	David & Carol Jordan	Michael & Kathleen
& Historic Trust	Dennis & Kelley Rice	Partnership	Lawrence & Carol Campion	District, Inc.	William M. Juzwic	Michalak
Irene Juthnas	Gloria Ricker	William Zamagni, Sr.	Debra Cantor & James Beede	Jim & Shirley Faucher	Kaplan & Brennan , LLP	Jane & Jack Middleton
Ayla Kardestuncer	Anne Roberts-Pierson	Susan Zimmerman &	Martin & Astri Carlson	Rudy J. & Joy P. Favretti	Ruth Karl	Larry Millhofer
Carlotta Kennedy	Margaret Rohloff	Claude Pellegrino	Joyce Carpenter	Lois Fay	Doug & Jennifer Kaufman	Wendy Mis
Killingly Grange #112	Deb Romaniw	<b>\$25+</b>	Lenore & Stuart Case	Gordon Ferrin	Judith Ann & Edward Keegan	Anthony Mongillo
Marilyn L. Labbe	Jim & Pam Rubovits	Susan Abbood	Jean Cass	Ronald & Barbara Fitzpatrick	Gary Kendrick	John F. Monroe
Ken & Linda Lamothe	Saari Studios	Roger Adams	Tom Chamberland	Rosemarie Florenz	Robert & Linda Kerr	Thomas & Nancy Moretta
Rusty Lanzit	Scotland Historical Society	Frank & Terry Aleman	Bill & Patrice Champagne	Susan Foster &	Mary Eliza Kimball	Gale & Judy Morganroth
Donna LaPointe	Reva Seybolt	Debbie Almada	William C. Champagne	Roger Solomon	Angela Kneeland	Donald & Kathleen Morin
Patricia L. LeBeau	William Shanahan	Julia Altdorf	Tom & Linda Chase	Audrey A. Franklin	Donna Koenig	Beverly Muldoon
Peter & Eleanor Linkkila	Grace A. Sheehan	Kiku Andersen	Chickadees	Elizabeth Gannon	Donald Konow & Susan Allen	Jennifer Nadeau
Lisbon Historical Society	Nancy Sheldon	Margaret Anderson	Lauren Churchill	Neal & Carol Ganz	Ann Kouatly	Anne H. Nalwalk
Millicent Lussier	Frank & Susan Shuell	Anonymous (2)	Eleanor Clark	Gerald & Rozalyn Geissert	John Kucharski	Nana B's Tea House
Sherry Magnan	Ted & Barbara Simmons	Christine Armstrong	Ronald & Donna Coderre	Patricia Gelinias	Paul Laccavole	James Nardulli
Mary McGrattan	Thomas Sinkewicz	Richard & Linda Auger	Mary C. Colburn	Barbara & Marcel Goetz	John Lachapelle	Michael & Mandy Nelson
Alexandra McNitt &	Warren & Angela Smith	Steven Ayer	Joyce Coleman	Patricia Goff	Barbara Laliberte	Denise Noiseux
Christine Holbrook	Solair Recreation League	Tim & Joan Baffaro	Maureen Combs	Jack & Stephanie Gosselin	Nancy Lamirande	Linda Noon
Geoffrey & Kimberly McLean	Bruce & Georgia L. Stauffer	Kelly Bailey	Connecticut Tigers	Michele Greaves	Sally Larmon	Richard & Avis Norman
Sean Menchin	Patricia T. Stevens	Joan Ballestrini	Coreplus Federal Credit	Gregoire's Herb Farm	Dennis Latchum	Dena & Keith O'Hara
Pauline Metras	David & Debbie Stoloff	Barbara Banda	Union	Griswold Historical Society	Paul & Louise Lee	Michael O'Keefe
The Metro Bistrot	Richard & Lynn Tarozzi	Kimberly Smith Barnett	Cornerstone Creations	George & Sandra Groom	Mary Beth Leonard	Gloria O'Neil
Alan & Katherine Miller	Temple Bnai Israel	Michael & Denise Baum	Mark Corriveau	Alison U. Haber	Glen & Christine Lessig	Leila F. Ostby
Peggy Miller	Theatre of Northeastern CT	Barbara & Robert Beeckman	David Corsini & Delia Berlin	David & Marjorie Hall	John Lewis	Oxford Historical
John Meyer &	Barbara Thompson	James Belisle	Robert E. Crotoft	Christine & Richard Haller	Michael & Cecilia	Commission
Carolyn Mills-Meyer	Thread City Community	Helen Bender	Sherill Cyr	Hampton Antiquarian &	Longenbaker	Palazzi Orchard
Stan Morytko, Jr.	Development Corp.	Scott Benoit	Marie Daumy	Historical Society, Inc.	Nicholas Longo	Jane Palmer
Nathan Hale Homestead	The Three C's	Pamela Benton	James R. Davis	Richard & Sarah Hardy	Jeff Lorello	Richard Paradise
Carol Joy Nelson	Mary Tomeo	Ruth Bergeron	Jane Davis	Rex & Sue Harkness	Catherine Lynch	Ted & Lori Parker
Peter & Elaine Nelson	David & Lisa Totman	Curtis & Carol Berner	Susan Davis & Jeff Simpson	John Haskell	Lucy MacWilliams	Manny Patel
New Boston Beef	Town of Franklin	Doug Berrisford	Jean de Smet	Elizabeth Hayden	Judith Marcus	Tony Paticchio &
No Knot Sense Massage	The Trust for Public Land	Diane & Mark Billings	John & Kathy Delaney	Ken & Merrie Hedler	Rocco Marino	Susan Eastwood
Northeastern Connecticut	Barbara Vizoyan		Richard &	Joseph E. Hickey, Jr.	Christine Marschall	Donna Pearson
Art Guild						

Emmanuel Perez  
Tamsen & David Philippi  
Melissa Phillips  
Raymond & Anne Pierson  
Dawn Pindell  
Eric Pohlman  
Rita Pollack  
Philip & Marjorie Prince  
Irene Profetto  
Alexander & Maureen Prokos  
Girish Punj  
Robert Quevillon  
Linda Racine  
Marion B. Racine  
Anis & Ann Racy  
Marilyn & Bob Rath  
Jeff & Becky Regan  
Herbert & Beverly Richardson  
Barry & Jane Rider  
Christine Rosati  
Constance Rosenlund  
Irene Roy  
Laura Ruoff & Ren Villalba  
Lester Ruth  
Edward (Mitch) Ryerson  
Mary Santos  
Marylou Savoy  
Robert Sawyer

Gordan Schies  
Rev. Barbara Schreier  
Julia Sedor  
Senexet Grange #40  
James & Evelyn Shea  
Elanah Sherman  
Mike & Susan Sherman  
Kim Smith Barrett  
Susie L. St. Laurent  
Frank Sweezy, Jr.  
Greg Swift  
Jo Ann Szela  
Barbara & Paul Szostakowski  
Marek & Nicole Tenerowicz  
Liz Thompson  
Ron & Gwyneth Tillen  
Avery & Cynthia Tillinghast  
Edward R. Tollman  
Ross & Joanne Tomlin  
Jane & Art Torrence  
Marshall & Karin Tourtellotte  
Thomas & Elizabeth Treiber  
Bill Tremblay  
Jennifer Tufts  
Clifford & Edna Van Dyke  
Sally Van Dyke  
Jean Marie Veroneau  
Lawrence & Danielle Vincent  
Murray Wachman

Cheryl Wakely  
Linda Walsh  
Jennifer A. Watson  
Alicia Wayland  
William & Michelle Weiss  
Carolyn Werge  
Vicki Wetherell  
Shawn & Allison Whiston  
Ann Williams  
Windham Textile and History Museum  
Walter Wojciehowski  
David Wojcik  
Sylvia Jane Wojcik  
Carol Wood  
Walter & Debra Woycik  
Bev York  
Patricia Zalesny  
William & Kathleen Zamagni  
Joan Zawacki  
Herbert Zickwolf  
  
**Under \$25**  
Valerie Amsel  
Anonymous (2)  
H. Janet Babineau  
Marilyn G. Bambauer  
William Barber  
Eric Barbour

Caroline Barrows  
Shirley Bernstein  
The Bird Store and More  
Michelle Bourgeois  
Linda Bronstein  
Bob Burgoyne  
Ralph & Jean Carlson  
Elsie-Marie Clark  
Geraldine Coady  
Ray Dahlstrom  
Dot Davis  
Mike & Debbie deFisser  
Ann DeFranco  
Tom DeJohn  
Karyn Di Bonaventura  
Bernard Dubb  
Liz Ellsworth  
Peter Fox  
Dale Geslien  
Debra Giambattista  
Richard & Diane Giggey  
James Gothreau  
Erik Gottlieb & Nancy Ciccone  
Grecian Delights  
John & Susan Hall  
Kathleen Hart  
Lee & Kristin Hazelton  
Nelson J. Horr

Debra Hultgren  
Jorie Hunken  
Joseph & Valentine lamartino  
Valerie Imre  
Patricia Kearns  
Killingly Grange #112  
Herma Kluck  
Jamie & Vincent Kordack  
David Lawrence  
Michelle Lengyel  
Janet Liessner  
Elizabeth Luchina  
Maggie McCoil  
Pam McCormick  
Judy Nilson  
Robert Nilson  
Noah's Ark Pet Shops of Sturbridge, Inc.  
Elizabeth Noyes  
Corrine Passardi  
Elaine Piazza  
Margaret A. Pothier  
June Powell  
Peter Roper  
John & Chris Sacrey  
Robert Schoff  
Keith & Meghan Schoppe  
Ann Shrayner  
Marsha Sokoloski

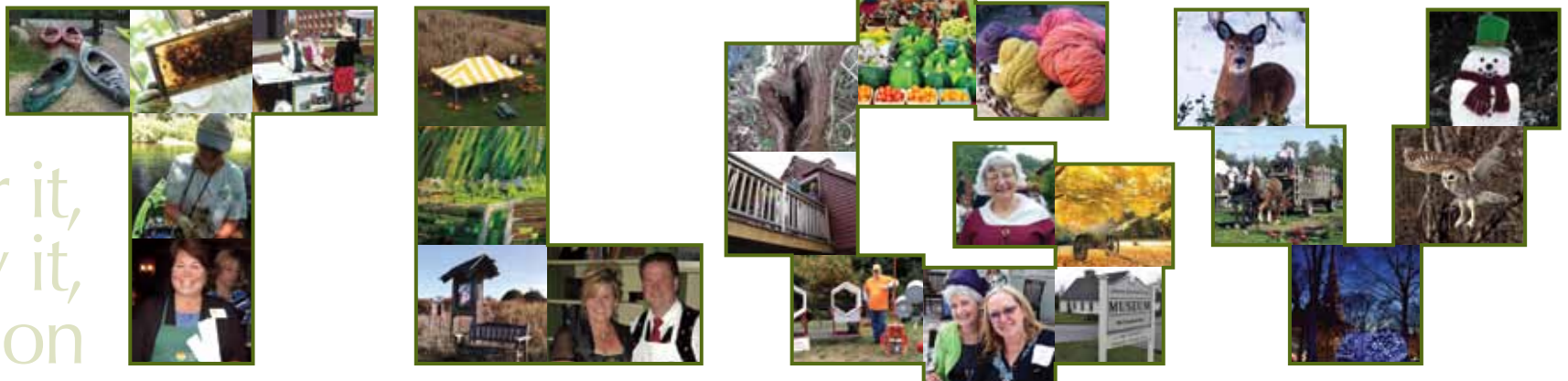
Gary F. Stephens  
Cecelia Sullivan  
Michelle Vadenais  
Cathleen Veroneau  
Roberta Vincent  
Jennifer Wallace  
Walter Watson  
Doe West  
Richard & Sandie Williamson  
William Winter  
Susan Yetter

**Gifts in honor or memory**

In honor of  
Meryl Bambauer  
Anonymous  
  
In memory of Carlos Barton  
Anonymous  
  
In memory of  
Sgt. Nathan Boyden  
Loring Boyden  
  
In memory of Roberta Briere  
Robert Briere  
  
In honor of Dick & Sandie Williamson  
Jim & Helen Bruinooge

In memory of Diane Bradley  
Elsie-Marie Clark  
Mike & Debbie deFisser  
Kristine Durocher  
First Congregational Church of Woodstock  
FCC Women's Fellowship  
Karen Gallo  
Barbara & Marcel Goetz  
Robert & Leslie Holland  
Walter & Carolyn McGinn  
Constance Rosenlund  
Lon & Susan Smith  
Barbara Thompson  
Susan Waldron  
  
In memory of  
Hon. Chase Going  
Falcon Farm  
  
In honor of Nancy Ciccone & Erik Gottlieb  
Rosemarie Florenz  
  
In honor of Louise Pempek  
Faith L. Johnson  
  
In memory of Peter Berris  
Ayla Kardestuncer  
  
In memory of  
James Oliver Robertson  
Janet Robertson

Care for it,  
enjoy it,  
pass it on





Non-Profit Org.  
U.S. Postage  
PAID  
Danielson, CT  
Permit No. 111

**The Last Green Valley, Inc.**

P.O. Box 29  
203B Main Street  
Danielson, CT 06239-0029

P.O. Box 186  
Southbridge, MA 01550

860-774-3300  
860-774-8543 fax  
Email: [mail@tlgv.org](mailto:mail@tlgv.org)  
[www.thelastgreenvalley.org](http://www.thelastgreenvalley.org)



Design by Angell House Design

Printed by The Pyne-Davidson Company  
on recycled paper with soy-based inks.

Cover photos by:

FRONT PAGE

Top - S. Hamby

Bottom left - L. Bruinooge

Bottom right top - J. Fulton

Bottom right middle - J. Gothreau

Bottom right bottom - J. Pillo

BACK PAGE: S. Hamby