

Oct 11 1952

UNIFORMS

for

U. S. NATIONAL PARK SERVICE

First in Quality
Expert Workmanship
Correctly Styled
Hundred Per Cent (100%) all wool Fabrics
Headquarters Specifications followed explicitly
Excellent Service
Insurance and Postage Prepaid
Made to your Individual Measure
Every Piece of Material thoroly cold water shrunk
Remember the name — FECHHEIMER

THE FECHHEIMER BROS. CO.

Uniforms for over Seventy Years

CINCINNATI 2,

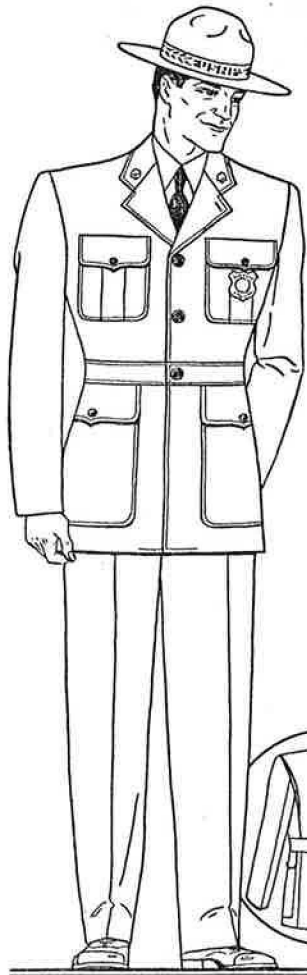
OHIO

Samples of the Specified Fabrics are on file in your Headquarter Office, where they may be inspected. However, should you desire samples for your personal use, they will be gladly forwarded, together with additional blanks, if you will so request.

UNITED STATES DEPARTMENT OF THE INTERIOR

REGULATION NATIONAL PARK SERVICE UNIFORM

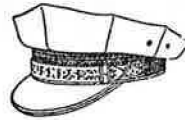
Made in strict accordance with National Park Service Administrative Manual No. 19.



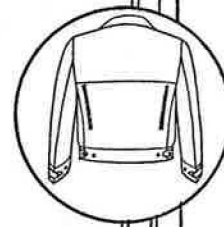
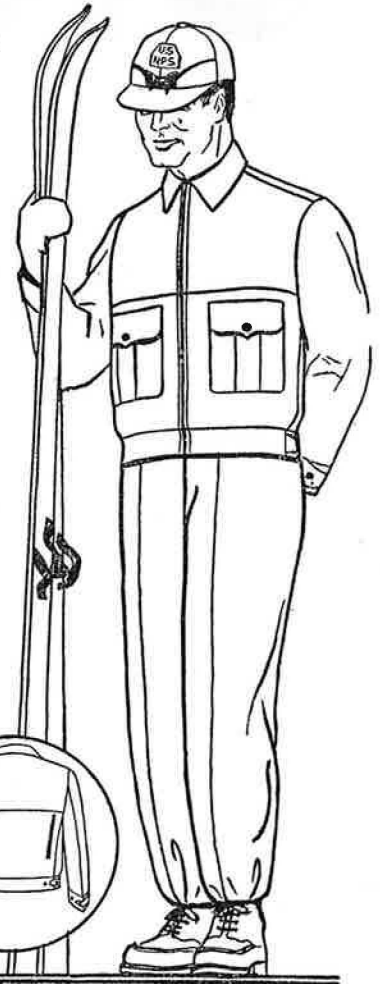
COMBINATION
TOPCOAT
AND RAINCOAT
Trench Type



WOMEN'S UNIFORM
Four kick pleats



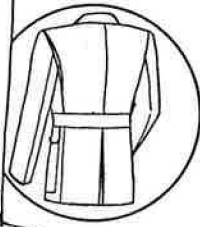
REGULATION
CAP
8 Point



FATIGUE AND SKI JACKET — As illustrated. Back is double, forming large pocket over entire back, opening at each side with 9 inch zipper fastener.

SKI TROUSERS — As illustrated. Full length, of conventional (downhill) cut. Made with zipper fly unless button fly is specified.

SKI CAP — As illustrated. Has adjustable earflaps and with embroidered NPS insignia on front.



COAT — Regulation. 3 button front. Bel- lows back. Patch side pockets. Two pleated breast pockets. Belt all around. Vent from bottom of belt.

TROUSERS cut for wear with belt and made without cuffs. Front pockets, 1/4 top. Made with zipper fly unless button fly is specified.

For further style details, see Price List and Measure Blank



MACKINAW OVERCOAT
As illustrated — Convertible collar

TO AVOID DELAYS BE SURE YOU HAVE CHECKED MATERIALS AND ITEMS WHEN ORDERING

THE FECHHEIMER GUARANTEE

All garments are guaranteed to be made strictly according to specifications in every detail and are further guaranteed for durability, wear, and general satisfaction. If favored with your order, we feel sure that our garments will meet your highest expectations. Each garment **MUST BE RIGHT** — each customer **MUST BE PLEASED!**

CORRECT FIT
GUARANTEED
SAMPLES ON
REQUEST

TAILORED TO
YOUR
INDIVIDUAL
MEASURE

4th and Pike Sts. THE FECHHEIMER BROS. CO. Cincinnati 2, Ohio

Copyrighted, The Fechheimer Bros. Co.

When remitting or corresponding about your order, please state: "U. S. NATIONAL PARK SERVICE"

ORDER BLANK AND PRICE LIST—NATIONAL PARK SERVICE UNIFORMS

MADE IN STRICT ACCORDANCE WITH NATIONAL PARK SERVICE ADMINISTRATIVE MANUEL No. 19.

Prices below are effective March 1, 1955, subject to change without notice.

All garments are cut and tailored to individual measurements and carefully follow latest regulations. We use first quality, "all-wool" specified fabrics only—linings, pocketings and inner trimmings are selected for your particular service. Correct fit and complete satisfaction guaranteed.

THE FECHHEIMER BROS. CO., Cincinnati 2, Ohio.

Enter Order as Follows:

Name..... Date.....
Please Print or Type Name

Address..... Title..... Permanent Employee— Yes () No ()

Shipping Address and Directions..... WE PAY PARCEL POST ON ALL SHIPMENTS

TERMS—FOR PERMANENT EMPLOYEES—1/3 deposit with order, 1/3—30 days after shipment, balance 60 days after shipment. **TERMS TO TEMPORARY EMPLOYEES—**1/3 deposit with order, balance C. O. D. **WE PREPAY PARCEL POST CHARGES ON ALL ORDERS.** Enclosed find (check or money order) for \$....., being..... payment.

*Mackinaw's Coats made of Material A-6685 will be (Tropical Constructed) which means without body lining, sleeve lining, hair cloth, felt or pads. Those made of A-6686 will be QUARTER LINED with Rayon. Coats of all other materials including all women's coats, will be full lined (unless quarter or half-lined is requested) with special FECHHEIMER Lining, which by ACTUAL test has proven to be the most durable obtainable.

Check Items and Extend Totals

SPECIFIED MATERIALS, ALL-WOOL FORESTRY GREEN	#COAT	TROUSERS No Cuffs	Unlined JACKET Fatigue and Ski	SKI TROUSERS	*COMBINATION TOPCOAT and RAINCOAT Cravanetted	*MACKINAW OVERCOAT (For linings, see below)	TOTALS
#85—10-oz. Tropical *Tropical Constructed Coat See explanation above	\$35.80	\$14.85	\$26.00	—			
A-6686—13 oz. Gabardine	42.25	19.50	32.70	\$20.20	\$66.15		
A-6687—16 oz. Elastique	46.75	22.50	36.85	23.45			
A-6688—19 oz. Elastique	49.50	24.45	39.75	25.45			
A-6684—30 oz. Melton						\$54.25	

*Mackinaw Overcoat Prices based on Full lining of Rayon unless half or quarter lining is specified. If heavy wool lining is wanted in Reefer, please specify and..... Add \$3.35

xCombination Topcoat and Raincoat will be full lined with high quality Rayon unless half or quarter lining is specified (see reverse side). If light weight wool lining is wanted, please specify and..... Add 3.80

ARTICLE	DESCRIPTION	HOW MANY	SIZE	PRICE	TOTALS
SHIRTS Ready Made	Poplin Steel Gray — Sanforized Shrunk.		Collar Size..... Sleeve Length.....	\$4.20	
	Collar attached. Shoulder straps. Two large pleated breast pockets. Button flaps, Pencil pocket. Excellent quality material, well made.				
NECKTIES Four-in-hand Dark Green Full Length	No. 420-N — Ready-Tied, Adjustable, Rayon Barathea, Wool Lined, Flare end			1.10	
	No. 430-N — Barathea Resilient Silk—Wool Lined, Hand Sewed			1.10	
TIES Main Leather	Cordovan Color Leather — 1 1/2" wide. 1/8" thickness. Two cinchers — Square type nickel buckle.	GIVE SIZE		1.35	
BELTS Embossed Leather	Prime First Selection Cordovan Color Leather. Embossed U. S. N. P. S. lettering and design. 1 1/2" wide. 1/8" thickness. Hammered Nickel buckle.			2.95	
CAP Regulation. Removable Snap-on Top. Inside Cane Band. Celluloid Sweat Tip. Easy Cushion Sweat Band. Hand-sewed.	Correctly balanced and durably constructed of the finest grade materials and workmanship. You'll like the fit and quality of this cap. Circle Fabric Number and Specify Size	A6685		4.10	
		A6686		4.60	
		A6687		4.95	
		A6688		5.15	
	Cap Strap — Cordovan Color Leather — Embossed lettering and design. Will not be furnished unless ordered, check if wanted			2.45	
	Ski-Cap — including embroidered letters			3.95	
HATS Regulation Stetson Belgian Belly Color Stiff Brim Three ventilator holes each side	Nutria Quality — Stetson Carried in stock only in 3 1/4" Brim x 4 3/8" Crown.			19.00	
	Head Straps — Shell Cordovan Leather. 1/2 inch width.			.40	
	Hat Band — Cordovan Color Leather. 1 1/8 inches wide. Embossed lettering, design and silver sequoia cones.			3.65	

Have you given all sizes where necessary? Grand Total

These prices DO NOT include collar ornaments, sleeve insignia, nor service stripes, as they are furnished by the National Park Service. Samples of fabrics listed gladly SENT UPON REQUEST. NO OBLIGATION.

Authorized Uniform Outfitters for U. S. NATIONAL PARK OFFICERS

THE FECHHEIMER BROS. CO.

FOURTH AND PIKE STREETS

CINCINNATI 2, OHIO

Coats made of material A-6685 will be made without body and sleeve lining, haircloth, felt or pads. Those made of A-6686 will be ONE-QUARTER lined.

Coats made of all other materials will be FULL-LINED unless otherwise specified below.

Half Lined () Quarter Lined ()

Trousers will be made with zipper fly, unless button fly is specified.

Remarks—If we have heretofore made garments for you, note approximate date below and any changes desired.

.....

.....

.....

.....

.....

.....

.....

.....

Any marked peculiarities of form?.....

.....

.....

MEASUREMENTS

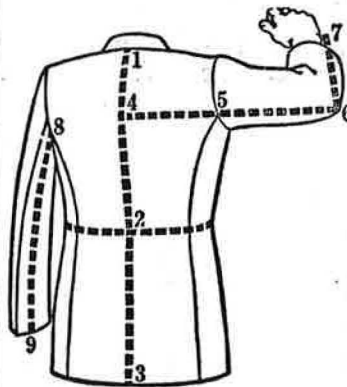
If your last uniform fit satisfactorily and there is no marked change in your weight, a new measure will not be required, as we retain all measures on file for two and one-half years.

If new measurements are needed, our attached, detailed, self-instructive measure form will enable almost anyone using proper care, to take them easily and correctly.

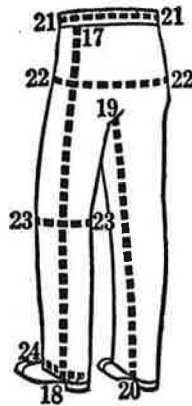
Should you prefer a local tailor to take your measure, you are privileged to select a competent one and the expense (not to exceed \$1.00 per uniform) may be deducted from your deposit when accompanied by receipted tailor's bill. In this event, please caution the tailor to strictly follow our instructions for the taking of each measurement as contained in the measurement form. Were he to use any other method, the measurements might be misinterpreted.

Through many years of experience, we find that measurements can be satisfactorily handled in this way and as a result, we are in a position to guarantee a correct fit.

Take actual measures, state whether snug or loose fit is wanted, we will then make proper allowances



Button Fly () Zipper Fly ()



Check Description Below. It is Important!

Height... Ft. ... Inches

Weight lbs.

Linen Collar Size Worn

Long Neck..... Short Neck.....

OVERCOAT, COAT OR JACKET MEASURE

Take With Coat On

From Collar Seam 1 to Waist 2

Coat Length—from Collar Seam 1 to full length 3. Average length for man 5 ft. 9 in. is approx. 31 in.

Mackinaw Length—Reefer length—from collar seam 1 to full length 3. Average length for man 5 ft. 9 in. is approx. 33 in.

Ski-Jacket length—from collar seam 1 to full length 3. Average length for man 5 ft. 9 in. is approx. 25 in.

Raincoat, Trench Type, length—from collar seam 1 to full length. Average length for man 5 ft. 9 in. is approx. 48 in.

Width of back 4 to Seam 5

Arm at right angle from 4 to 6 Sleeve Length from 4 to one inch beyond wrist bone at 7

Inside sleeve length from armhole at 8 to end of sleeve at 9

Now Remove Coat

CHEST—Measure well up under arms Around Breast over Vest

Around Waist over Vest

Around Seat at 22 taken over Trousers

TROUSER MEASURE

Outside seam from bottom of waistband at 17 down to heel seam at 18

Inseam from crotch 19 (well up) down to 20

Around Waist at No. 21

Around largest part of Seat at No. 22

Knee Size Wanted at 23

Bottom Size Wanted at 24

Bottom size at 24 is to be not less than 18" or more than 19"

Do not write in this space. For Cutter's Instructions.

Coat Pat.	Size	
	Add	Reduce
Collar		
Erect		
Stooping		
Scye		
Strap		
Shoulder Height		
Waist Length		
Full Length		
Width of Back		
Sleeve		
Waist		
Seat		

Pattern PANTS

	Add Reduce	
	Add	Reduce
Rise		
Inseam		
Waist		
Seat		
Knee		
Bottom		

PLACE CIRCLES AROUND FIGURES NEAREST RESEMBLING FORM AND SHOULDERS. Be sure to Stand in Customary Position!

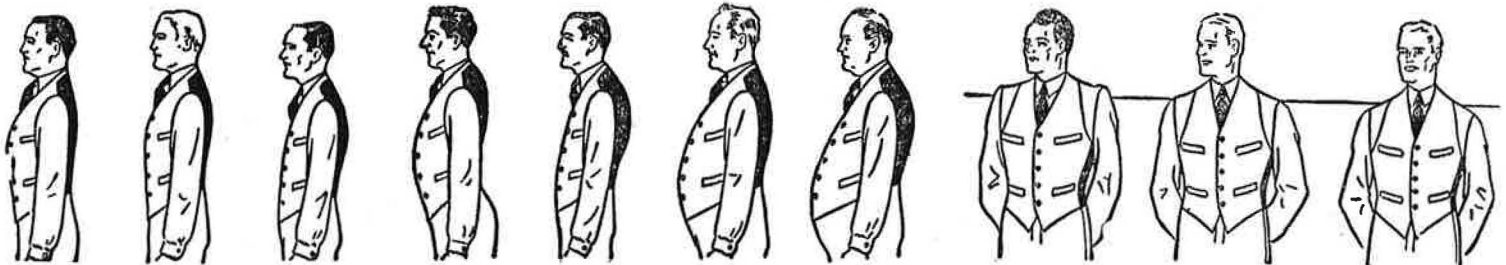


Fig. 1 Erect Full Chest Flat Back
 Fig. 2 Normal Regular Chest and Back
 Fig. 3 Head Forward, Flat Chest
 Fig. 3A Sway Back, Prominent Seat, Regular Shoulders
 Fig. 4 Stooping, Full Back and Flat Chest
 Fig. 5 Regular Stout, Regular Back and Chest
 Fig. 6 Corpulent, Round Back, Flat Chest, Prominent Stomach
 Fig. 7 High Shoulders
 Fig. 8 Normal Shoulders
 Fig. 9 Sloping Shoulders