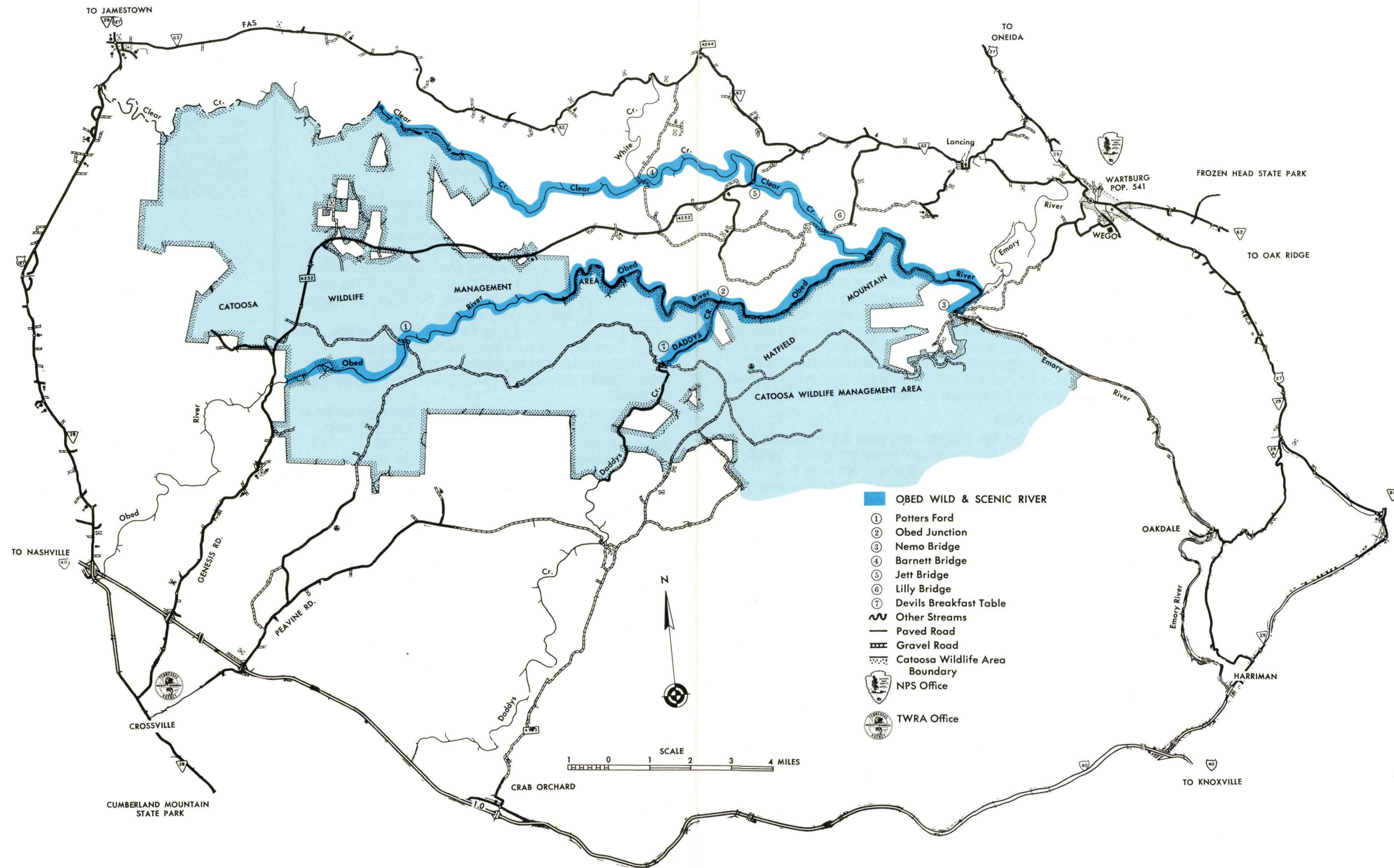
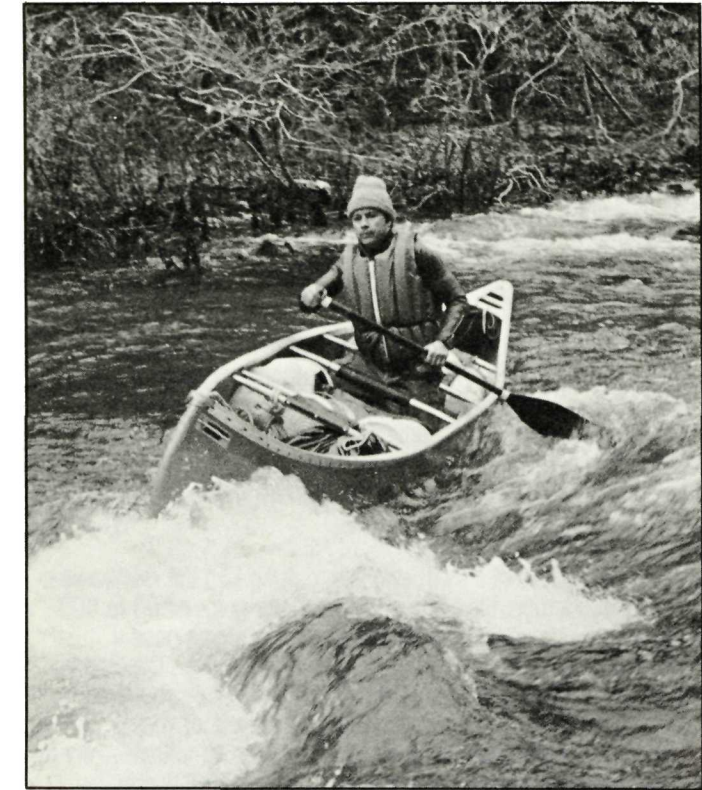


THE OBED WILD AND SCENIC RIVER



Sections of four beautiful streams — Obed River, Clear Creek, Daddys Creek and Emory River — are being preserved for you. They flow through private property and the Catoosa Wildlife Management Area, which is managed by the Tennessee Wildlife Resources Agency.

Congress has authorized federal acquisition of parts of these streams and some land along them.

BUT, YOU SHOULD TAKE NOTE THAT THE FEDERAL GOVERNMENT DOES NOT OWN ANY LAND OR ANY PARTS OF THESE STREAMS YET. THEREFORE, THE FEDERAL GOVERNMENT HAS NO FACILITIES AVAILABLE TO THE PUBLIC.

Congress added the Obed Wild and Scenic River (WSR) to the National Wild and Scenic Rivers System Oct. 12, 1976.

The Obed WSR is managed jointly by the National Park Service (NPS), of the Department of the Interior, and the Tennessee Wildlife Resources Agency.

TO REACH THE OBED COUNTRY

From Nashville, drive east on I-40, 114 miles to the Genesis Rd. exit near Crossville. Then go north on Genesis Rd. to the Obed. From Knoxville, drive west on I-40, about 40 miles to U.S. 27, then go north 16 miles to Wartburg.

ACCESS TO THE RIVER

WARNING! Access points to the streams are NOT owned by the National Park Service. Some access points can be reached via publicly owned rights of way and some are reached via private property.

The NPS has no authority to post signs to direct you to the streams. It is your responsibility to know whose land you are crossing.

There are only six practical access points to Obed River, Clear Creek, Daddys Creek and Emory River. They are numbered on the map in this folder.

Access point No. 2, Obed Junction, nearly 300 feet downstream from the confluence of Daddys Creek and the Obed River, is privately owned. Get permission from the property owner before using this route. Obed Junction is difficult to locate because it is on a road that resembles a creek bed and is not maintained. It is recommended that this area be used only as an emergency exit or a walk-in route.

Access point No. 4, Barnett Bridge, is shown on some maps as Waltman Ford Bridge. This access is a steep, rough road, graveled in some places.

Roads in the Catoosa Wildlife Management Area are closed for your safety during managed hunts. They are closed in late winter to preserve graveled roads from destruction by motor vehicle traffic.

WHAT TO SEE

The Obed System's swift streams, cutting into the Cumberland Plateau sandstone, have carved spectacular gorges 200 to 500 feet deep. Huge sandstone boulders in the streams pose a challenge to you as a canoeist or as a photographer. Overhanging bluffs may shelter you from stormy weather as they sheltered native Americans who preceded you by hundreds of years.

Because of the great variety of soil and site conditions—dry to moist, sunny or shaded—you will see many contrasting plant communities. On the uplands, you will see oaks, pines and hickories; on the valley slopes, oaks, ash, beech, maple, yellow poplar and hemlock. Along the riverbanks you will find sycamore, birch, elm and ash. Azaleas, rhododendron and mountain laurel blooming beside the streams will capture your attention.

The Obed River system, because of its freedom from silt, supports a variety of fish and other aquatic organisms. Fishing favorites include three species of bass as well as bluegill, warmouth and catfish. Several other species, including the Ohio River muskellunge, spotfin chub, longhead darter, a crayfish and several mussels, are threatened or endangered.

One hundred thirty-eight bird species, including eight game birds and the rare bald eagle, golden eagle and red-cockaded woodpecker, might be observed in the Obed River country.

More than 40 species of mammals, including white-tailed deer, raccoon, opossum, squirrel, fox, bobcat and groundhog, may be looking back at you from glade or glen.

WHAT TO DO

The Obed River system will not support heavy use, so visitor facilities will be limited and rather primitive. If you can accept the river on its own terms, it can provide rewarding experiences. Depending on the time of year, you can picnic, camp, fish for bass

or catfish, swim the still-water pools, hike atop the gorge rim, at the base of the bluffs, or among the boulders at the river level, paddle white water in your kayak or canoe, or float your raft down the rapids, or your jonboat on the still pool. You can even hunt for hogs, deer, turkey or other game during hunting seasons.

RUN WHITE WATER

December to April—the cold, rainy season—is usually the only time the rivers are full enough for float trips. At that time, the streams become charging torrents—technical white water. You should try them only if you are trained, experienced and equipped for canoeing white water. *Never float with less than two other craft.* A close friend or a member of your family should know which section, or sections, of the river you plan to float and the date and time that you plan to get off the river.

Some of the rapids in the Obed system can destroy a canoe in a moment. If you are plunged into cold water improperly clothed, you will be numb in seconds and dead in minutes. Help may be miles away—and in what direction? To get training and experience, join a canoe club. Meanwhile, it's best to test your abilities in a less hazardous stream where the penalty for failure is not sudden death.

The following chart shows white water difficulty ratings based on optimum stream flow. As water level varies, so do the ratings. As of January 1980, the water flow readings were reported only at Oakdale (downstream on the Emory) and did not indicate high water on any single stream due to local showers. The chart just shows total flow. The NPS proposes to add gauges at each access point.

Below minimum flow, there is a lot of walking and pulling the boat. Above maximum flow, the river is considered unfloatable in any craft. "Maximum difficulty" indicates highest rated rapid in that section at optimum flow.

OBED — EMORY						
Reference points including (numbered) access points—see map	Miles	Average Difficulty	(Maximum Difficulty)*	Minimum Flow#	Optimum Flow†	Maximum Flow
(1) Potters Ford to (2) Obed Junction	12	II	(III)	1000	3000	5000
(2) Obed Junction to Clear Creek Jct.	4	III	(IV)	500	1500	3000
Clear Creek Jct. to (3) Nemo Bridge	5	II	(III)	500	1500	3000
CLEAR CREEK						
(4) Barnett Bridge to (5) Jett Bridge	5	II	(II)	500	2500	4000
(5) Jett Bridge to (6) Lilly Bridge	2	II	(III)	800	2500	4000
(6) Lilly Bridge to Clear Creek/Obed River Jct.	2	III	(IV)	1000	2500	3000
DADDYS CREEK						
(7) Devils Breakfast Table to (2) Obed Junction	2	II	(II)	700	1500	3000

*Difficulty ratings based on "International Scale of River Difficulty," which rates rivers on a scale from I to VI with IV being the limit on which an expert can use a canoe. Copies of this scale and descriptions are available from AWA, listed below under "More on Canoeing."

#All flow figures are in cubic feet per second (C.F.S.).

†Flow information on most streams in East Tennessee is available from TVA (615) 525-5751. (Listen for the reading: "Emory at Oakdale").

HIKE

You may hike trails and roads in the Catoosa Wildlife Management Area except in deer and turkey hunting season. Don't go alone. Tell a responsible friend where you plan to go and when you expect to return. Bluffs along the gorge rim make cross-country hiking hazardous.

SWIM

Traditional swimming holes along the streams invite you to swim in warm weather. If you accept their invitation, bring a strong, sober friend with a rope. Keep in mind that wet rocks are slick and that the stream bottom is uneven with deep holes close to the bank. Don't dive until you have checked thoroughly for adequate depth. Conditions may change from season to season. Clear water is not always clean water. Don't drink stream water without boiling or treating it.

CAMP OR PICNIC

You may camp at Potters Ford on the Obed River, except when the Wildlife Management Area is closed and during the deer and turkey-hunting seasons. There are no facilities at Potters Ford, however. Primitive facilities are available at Frozen Head State Park near Tenn. 62 two miles from Wartburg. Cumberland Mountain State Park, eight miles south of Crossville on U.S. 127, offers a developed campground. You will find private campgrounds along I-40 and in the Crossville area. *Carry out your litter* so that you and your neighbors can continue to enjoy the beauty of the Obed.

HUNT AND FISH

You may hunt deer, boar and small game in season with a permit from the Tennessee Wildlife Resources Agency. You will need a Tennessee State fishing license to fish in the area.

Firearms are prohibited except during hunting season when you are carrying the necessary licenses and permits.

PLAY SAFE—DON'T GO ALONE

Cold, swift white water is no place for novice canoeists. Swim, hike, hunt or fish with a friend. Watch out for each other. Don't hike off trails or at night without a light. You can avoid copperheads and timber rattlers by looking where you are putting your feet and hands. Poison ivy can be avoided the same way. You will encounter fewer chiggers, ticks and stinging insects on trails than in the bush. Carry a first aid kit with you and know how to use it.

DON'T LEAVE YOUR CAR UNPROTECTED

Vandals and thieves prey on unattended vehicles. Park where you or a responsible person can protect your property while you fish or explore. Better yet, have a friend drop you off and pick you up if you plan to float a section of river.

MAPS, GUIDES, SERVICES

The best general map of the Obed area is the *Emory River Watershed Map*. It is available for 75 cents at the Tennessee Valley Authority, Map Sales, 400 Commerce Ave. (WP A3), Knoxville, TN 37902.

You can buy 7.5 minute U.S.G.S. topographic quadrangles of the Obed area from the Tennessee Valley Authority (address above) for

\$1.25. The following quadrangles show the sections of Obed River, Daddys Creek, Clear Creek, and Emory River that have been included in the Wild and Scenic River:

Fox Creek	Lancing
Hebbertsburg	Pilot Mountain
Jones Knob	Twin Bridges

The quadrangles listed below also show canoeable sections of Obed River, Daddys Creek, Clear Creek, and Emory River, but they are not included within the Wild and Scenic River.

Clarkrange	Ozone
Isoline	Grassy Cove
Crossville	Camp Austin
Dorton	Harriman

For canoeing, you may purchase the *Obed-Emory River Guide* from the Tennessee Scenic Rivers Association for \$1.50. The Guide provides information about access points and river classification. Send \$1.50 to TSRA, P.O. Box 3104, Nashville, TN 37219.

There are no outfitters in the Obed River vicinity. Blue Ridge Mountain Sports, 5201 Kingston Pike, Knoxville, TN 37919, and Lickty Split, 429 E. Spring St., Cookeville, TN 38501, rent canoes. No commercial shuttle service is available.

Hiking trails are proposed along the bluffs of the Obed River and Daddys Creek, but there is no developed trail system yet.

For fishing and hunting information, write to the Manager, Catoosa Wildlife Management Area, 216 East Penfield, Crossville, TN 38555.

You can get information about other recreational opportunities in the State of Tennessee by writing to the Department of Tourist Information, 505 Fesslers Lane, Nashville, TN 37210.

Motels nearest the Obed River are at Sunbright, Wartburg, Harriman and Crossville.

MORE ON CANOEING

Ask your local chapter of the American National Red Cross for a copy of *White Water in an Open Canoe*. ARC also publishes a textbook, *Canoeing*, at \$3.95 (stock number 321125). Knox County Chapter ARC, P.O. Box 2026, Knoxville, TN 37901 has them.

For *Paddlers' Safety Code and River Rating Guide* (and a sample copy of *American White Water*), send 20 cents in stamps to AWA, P.O. Box 321, Concord, NH 03301.

CANOE CLUBS

These organizations can put you in touch with canoe clubs in your community.

American Canoe Association Box 248 Lorton, VA 22079	American Whitewater Affiliation P.O. Box 321 Concord, NH 03301
---	--

Tennessee Scenic Rivers Association
P.O. Box 3104
Nashville, TN 37219

THE MANAGERS

Obed Wild and Scenic River is managed jointly by the National Park Service, of U.S. Department of the Interior, and the State of Tennessee Wildlife Resources Agency. You can contact them at these addresses:

Superintendent
Obed Wild and Scenic River
P.O. Drawer 630
Oneida, TN 37841
(615) 569-6389

National Park Ranger
Obed Wild and Scenic River
P.O. Box 429
Wartburg, TN 37887
(615) 346-6295



Manager
Catoosa Wildlife Management Area
216 East Penfield
Crossville, TN 38555

