



Find Yourself Here!



The Official Visitor's Guide to the Obed WSR

Welcome to the Obed Wild and Scenic River. We know that you will enjoy spending quiet time or thrilling outdoor adventures recreating in the park this summer. The park's 5,000 acres surround 45 miles of rivers and streams that are full of recreational opportunities including fishing, paddling, tubing, and climbing.

The Obed Wild and Scenic River centers around four principle waterways of the park's watershed, the Obed River, Clear Creek, Daddy's Creek, and the upper Emory River. These creeks and rivers have been running their course for thousands of years carving into the sandstone and creating spectacular gorges with cliffs up to 400 feet above the streams below. Huge sandstone boulders in the rivers and creeks create challenging whitewater rapids enjoyed by whitewater enthusiasts from around the world. The cliffs of the Obed are world renowned with over 400 named routes that vary in difficulty from 5.7 to 5.13.

This news guide is designed to help you discover, plan your stay, and enjoy everything your Obed Wild and Scenic River has to offer. Everyone who comes will be seeking their own connection to their park so we have designed the 2014 summer paper around some of the recreational activities available to you. The Obed is all about enjoying the outdoors so dust off your camping gear, hiking boots, climbing gear, and fishing tackle. Spend your summer in the outdoors with us. While you are here, hike The Point Trail, out to the Lilly Overlook or the Cumberland Trail, try your luck fishing miles of pristine river, bring your gear and test yours skills on some of the park's famous climbing routes, or join the rangers on the first Saturday of the month to learn the sport. You can also bring your raft, tube or kayak to enjoy some time on the river.

If you would like to learn more about the park, its resources, and its recreational opportunities you can talk to a ranger at the Obed Wild and Scenic River Visitor Center, or join us on one of our ranger-led programs. Take the opportunity to read this guide so you can make the best use of your time at the Obed Wild and Scenic River.

4 Park Map

This map shows how to get to the most popular points of interest in our park.

6 Walks and Talks Schedule

Find out when the next ranger program will take place and join us.

7 Hey Ranger!

See what the commonly asked questions are for the park. See if your questions are answered here.



Welcome to the Obed Wild and Scenic River!

The Obed Wild and Scenic River is something different for each person who experiences it. It can be a place to have a heart pounding thrill if you are a rock climber or a paddler, or it can be a relaxing day listening to the sounds of nature if you are a hiker or fisherman.

I invite you to find out what the park means to you by exploring the experiences it offers you. A variety of outdoor activities await you at the Obed Wild and Scenic River. kayaking, canoeing and rafting are popular seasonal activities. During the right conditions, the river system includes whitewater runs that range from Class II to Class IV. Rock climbing and boulder climbing are also available at the park. Dozens of climbing routes ranging up to 200 feet in length are available. For those who love to fish, the Obed is home to a variety of bass, bluegill, catfish and muskie, among others. If hiking is what you seek you can enjoy several different hiking trails at varying lengths throughout the park, or join a ranger-led hike or program.

If you are looking for ideas, stop at the park's Visitor Center at 208 North Maiden Street in Wartburg and explore the exhibits, pick up information, talk to a ranger, and watch our new park movie titled "Find Yourself Here". After learning more about the park, rangers can direct you to the activities you seek and you can find out what the Obed Wild and Scenic River holds for you. Your experience awaits you. I hope to see you in the park.

Niki Stephanie Nicholas
Superintendent



National Park Service
U.S. Department of the Interior

Obed Wild and Scenic River

Mailing Address

PO Box 429
Wartburg, TN 37887

E-mail

obed_information@nps.gov

Fax Number

423-346-3362

Park Headquarters

423-5346-6294



STAY CONNECTED WITH US

Follow us on Twitter @ObedWSR
Like us on Facebook as ObedWSR
Visit our website at www.nps.gov/obed

WIFI is available at the Visitor Center.

The National Park Service cares for the special places saved by the American people so that all may experience our heritage.



Events Calendar

All events are Eastern Time. All interpretive programs are subject to change.
Contact Obed Wild and Scenic River Visitor Center at (423) 346-6294 for program details.

NATIONAL RIVER CLEANUP DAY

Held every May on an agreed-upon date. Volunteers, scouting groups, and whitewater paddling groups team up to clean up all access to the park. Following the cleanup, a picnic lunch at the Obed Visitor Center is provided to all volunteers.

ADOPT-A-CRAG

Held on the first Saturday of September. Similar to the National River Cleanup Day, but held within the areas of the rock climbing sections of the park. Various climbing groups and any interested volunteers help to pick up trash and do trail maintenance work around the park's climbing areas.

6TH GRADE SCHOOL PROGRAM

Held throughout the second and third weeks in May. Every Morgan County 6th grader gets to spend a day kayaking and rock climbing at the Obed. It is the perfect start of summer for these kids.

ANNUAL PHOTO CONTEST

Photographers are invited to submit entries for the annual photography exhibit at the Obed Wild and Scenic River Visitor Center. The NPS is looking for striking digital images of nature, highlighting the diversity of life in the park. Deadlines, submission information, and rules and regulations can be found at www.nps.gov/obed.

Fee Free Days at Obed

Rough economic times call for economical fun, and you can't beat America's 401 national parks for family time, fresh air, and opportunities to learn about our great country. Every day there are more than 200 national parks that never charge an entrance fee. Find one close to you at www.nps.gov.

Although Obed does not collect entrance fees, we do have use fees. The park will have fee free days for camping at Rock Creek Campground. The following dates are the official fee free days of 2014:

- August 25 -- National Park Service's 98th Birthday
- September 27 -- National Public Lands Day
- November 11 -- Veterans Day

Our Park Campground



ROCK CREEK CAMPGROUND

11 primitive sites - \$7.00 per night
Open year round
Phone number: (423) 346-6294

Rock Creek is a primitive campground and offers eleven campsites with a vault toilet facility. No drinking water is located at this area.

Experience all that Obed has to offer by staying a while.

User Fees of Obed Wild and Scenic River

CAMPING FEES

ROCK CREEK CAMPGROUND
ALL SITES 11 SITES
\$7.00-NIGHT (6 PERSON MAX.)*

PERMITS

HOG PERMITS \$5.00*/PERSON

PASSES

INTERAGENCY SENIOR PASS
\$10.00 ONE TIME FEE

INTERAGENCY ACCESS PASS
FREE WITH PROOF OF DISABILITY

INTERAGENCY PARK PASS
\$80.00

INTERAGENCY MILITARY PASS
FREE WITH PROOF OF ACTIVE MILITARY DUTY

GET YOUR INTERAGENCY PASS ONLINE AT store.usgs.gov/pass/index.html or at one of our visitor centers.

*Holders of the Interagency Golden Age/Access Passports pay only half the fee.



CONCESSIONAIRE

Eastern National - (423) 286-7275
www.eparks.com/store

PERMITTED OUTFITTER

LR Climbing, LLC
Guided rock climbing and bouldering
219 Broad Street
Chattanooga, Tennessee 37405
1-423-602-7625 (ROCK)
www.highpointclimbing.com

Logging Along the Obed

by Joe Zagorski, Park Ranger

Logging along the Obed began early as the first pioneers moved to the region in the late 1700s. Hand-held saws and axes were the primary tools for the earliest residents. Many of the oak, hickory, maple, walnut, and poplar hardwood trees that make up the forest were useful for cabins, furniture, tools, etc. By the late 1800s, local industries began to sprout up. The logging industry reached its zenith from the late 1800s to the late 1920s. Several towns in Morgan County had logging mills, saw mills or coalmine operations. Including Petros, Wartburg, Sunbright, Harriman and Coalfield.

Transportation was problematic along the Obed. The river was not close to any large cities, and the wood had to be transported in some way or another. The first attempts to transport the logs were through narrow, hilly, muddy roads with horse and oxen teams. The river was too narrow and had far too many rapids for any legitimate attempts at transporting the wood. It wasn't until the railroad lines were built in the latter part of the 19th century that the logging industry along the Obed became successful.

Railroads ran close to the river at Obed Junction and at Nemo. The local towns housed the railroad workers, and before long, better and more modern equipment was used to cut down the trees. Hand saws were still used, and so were crosscut saws. Stumps that were too difficult to remove were often left to rot. Underbrush burning was common, as was allowing cattle and hogs to roam and forage the land. Big trees were the most favored during the early 1900s along the Obed. Sawmills dotted the landscape near Nemo and Island Creek. Around the Catoosa area, a school was built with a student body of 150.

Prosperity for the area seemed definite, until the Flood of 1929, followed by the Great Depression, and then to rub salt in the wound, the Flood of 1940. By the end of World War II, most of the lumberyards, sawmills, etc., were nonexistent. Today, portions of the old railroad lines are visible. The buildings along the Obed that once were filled with busy, hard-working men and women are gone.



Photo courtesy of Michael R. O'Neal

Be a part of our team... Become a Volunteer

For information on how you can become a National Park Service Volunteer, contact the Volunteer Coordinator at (423) 346-6294 or email us at obed_information@nps.gov. Visit us online at www.nps.gov/obed/supportyourpark/volunteer.htm to see all of the wonderful opportunities that are available.



A Childhood Reunion

by Veronica Greear, Park Ranger

As a young girl I always felt a strong connection with nature and the outdoors. I did not grow up in a rural area, but my manicured back yard bordered a patch of wild woods, which was the perfect place to play and explore. My brother and I would crawl under the rust covered metal fence and make our way through the twisted branches in seek of a secret refuge. Whether it was exploring the creek bed for creatures, turning over moss covered rocks to see what mystical creatures they hid, or playing a competitive game of army, we were in our element. Only impending darkness and the call of our parents would lure us out of the fun we found in the deep woods.

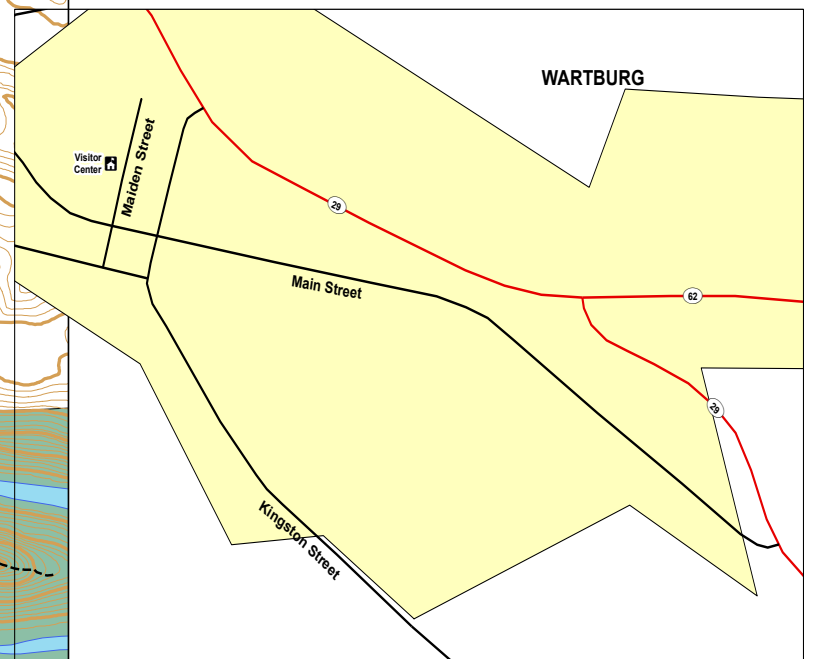
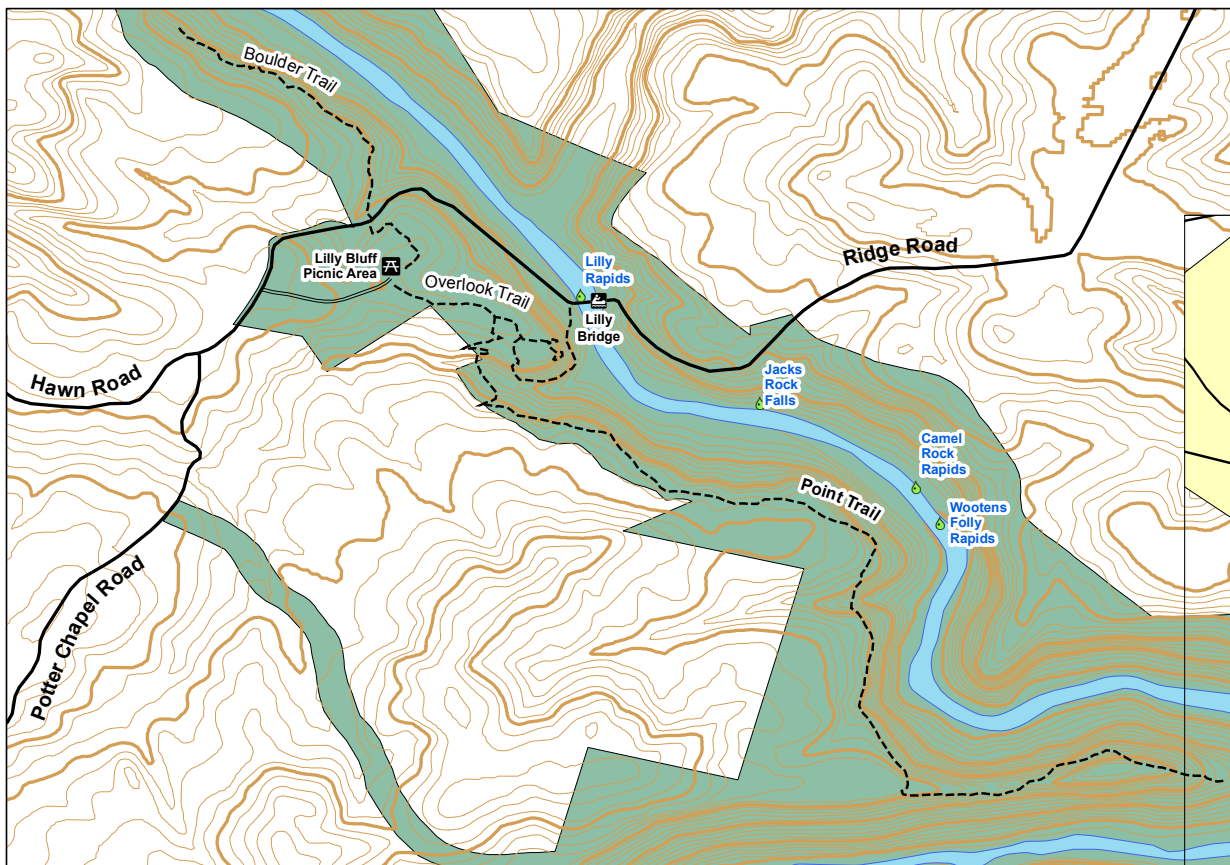
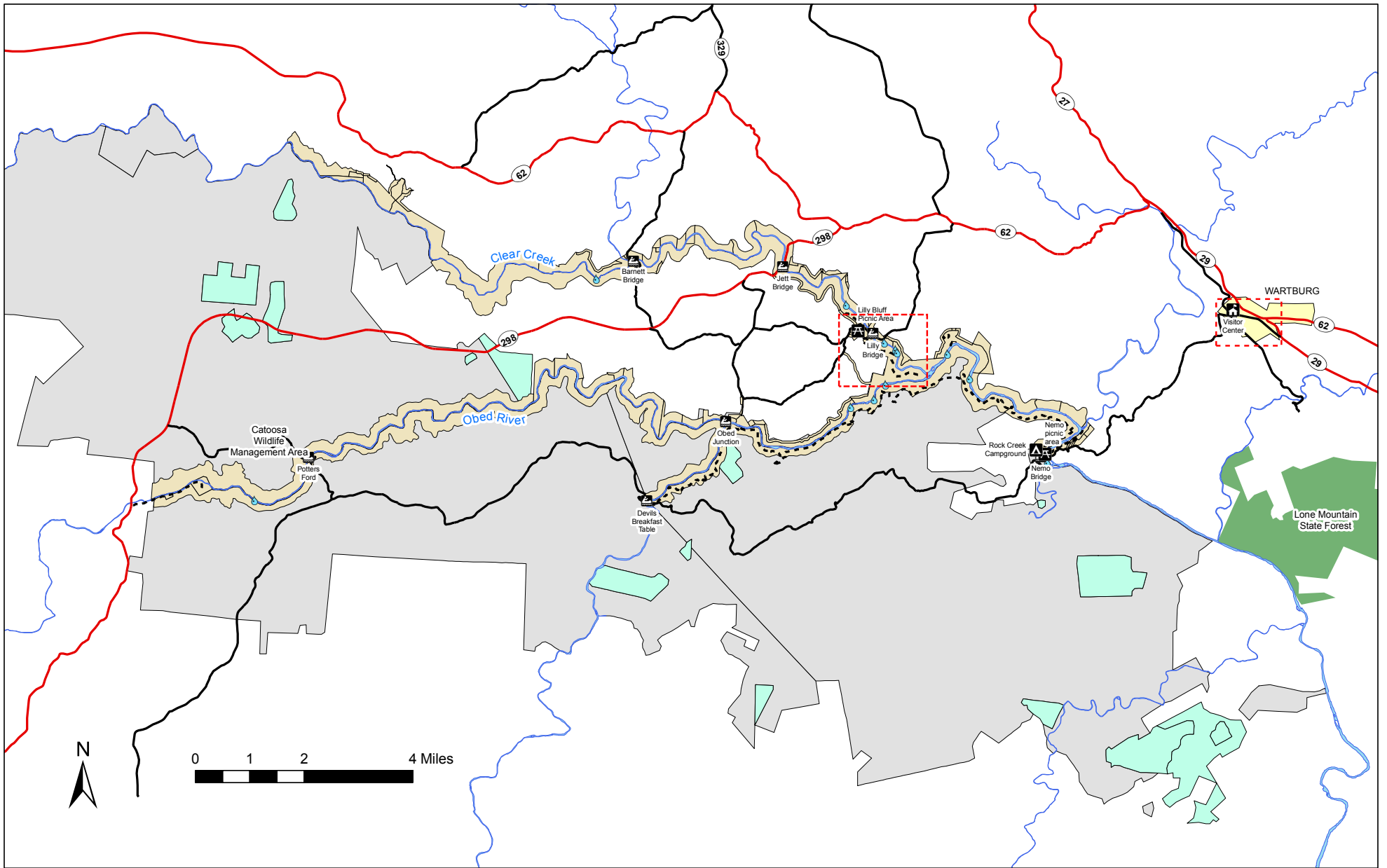
As a parent, I want to foster that instinctive curiosity and connection with the natural world which made my childhood so memorable. Introducing these special places to young ones early in their lives fills that indestructible sense of wonder that we are were born with. Although we live in a typical neighborhood within the city limits, we often take advantage of the lush green wooded lot that separates our home from the next. After a heavy rain we can hear the trickle of water as it stumbles and falls through the creek cutting through the lot. Leaf boat races, building beaver dams, or even traveling through the magical train tunnel are some of my children's favorite activities. Just the other day, my son was fascinated to watch ants on our deck take advantage of a misfortunate fall of a moth.

Getting your family in nature has exponential benefits physically, mentally and, even spiritually. The breathtaking views of the sandstone cliffs and rugged landscape of the untamed streams of the Obed Wild and Scenic River can bring peace and tranquility, while hearing the shrill of a red-tailed hawk soar above and listening to the call of the grey tree frog will make you yearn for more time to explore. A peanut butter and jelly sandwich never tasted better than when eaten on a lichen touched rock with the serenade of a babbling brook or roar of a river. Whether it is climbing a sandstone cliff or catching crayfish in the riverbed, there is a special place for all visitors. Now summer is here and lasting memories are waiting to be made. Connect with nature, awaken the childhood spirit that lives within you and ignite a spark for the young, who will one day, hopefully see the value of protecting these meaningful places.

Weddings in the Park

Special events such as weddings and river races require a special use permit. If you need more information about how to obtain a special use permit, contact the Fee Program Manager, Letitia Neal at 423-569-2404 ext. 267 or by email at tish_neal@nps.gov. Information can also be found on our website at www.nps.gov/obed/planyourvisit/permits.htm.





Fishing

by Chance Hall, Park Ranger

My fondest memories of the Obed are with my Dad and brother lying on a rock on the river bank all night long waiting for the catfish to bite. I still remember my first overnight trip. The early morning hours were spent getting our gear packed, digging worms, catching bait out of Mamaw's pond, and then we waved goodbye to Mom. We were off through the woods surrounding our house, through the large dewy fields, and finally over the hill into the gorge. This seemed to me like the longest hike I had ever been on, and my pack must have weighed half as much as I did. I refused to let my Dad or brother know that I was already tired by the time we got to the river. So, I fished hard until nightfall walking up and down the riverbank jumping to and from rocks, never slowing down.

My Dad usually did not take a tent with him, but for this trip he had set one up for us in the best place to fish for the night. As nightfall settled onto the river and the crickets began to chirp, we got settled in for a long night of catfishing. We cast out our lines to leave in wait for a hungry fish. Then, we stretched out on the rock to watch for shooting stars. Locked away from the rest of the world by the gorge walls around us, we talked and waited for the sound of a can rattle on the rock to let us know we had a fish on. Just as I began to doze off, my brother got a bite! I watched wide eyed and a little jealous as he caught his first catfish. After the excitement, my dad made us go on to bed. We tried to stay up talking about the fish my brother had just caught, but exhaustion won over and we drifted to sleep to the sounds of the river.

We were awakened by the sound of loud thunder and bright lightning. The storm must have blown in quickly, because my Dad was still out bringing lines in. We could hear the rain coming toward us. The noise of the storm drowned out the sound of his boots on the rocks. My brother and I sat up looking at one another in the dark with silent worry for our dad. Time seemed to crawl as the rain and wind beat down on the tent. Then, the tent door opened and he came in along with a wave of wind-blown rain. We scooted out of his way and ducked away from the sudden chill that he had brought with him. He sat between us laughing, opened a can of beanee weenees, and he stayed up the rest of the night to keep a sharp eye on the river level.

The Obed Wild and Scenic River follows the same rules and regulations set forth by the Tennessee Wildlife Resources Agency. For more information you can contact the Obed Visitor Center at (423) 346-6294 or visit the Tennessee Wildlife Resources Agency <http://www.state.tn.us/twra/fish/fishmain.html>. Buy your fishing license online at <https://app.fw.ky.gov/license/waonlinefront.aspx>.



PHOTO BY AMY SMOTHERMAN BURGESS

Vertical Challenge

by Chance Hall, Park Ranger

I climbed for the first time about five years ago, and I remember my first attempt like it was yesterday. The day was warm and a little muggy, and as I was hiking I came upon a group of climbers who invited me to try a climbing route they told me was called Tics are for Kids. When I heard the name, I remember thinking, "How hard could that be?" The group helped me get harnessed up and tied in, and I even put my feet into a stranger's sweaty climbing shoes. After all, he said it would help.

I took the cheater line to start, followed by a short traverse to get back on line with the route. I was feeling pretty good about it, and then the real climbing started. The first few moves brought me to a bulge on the face of the rock. I struggled until I had to rest my weight on the rope. Then, I struggled and rested some more until finally my entire body was soaked with sweat and my arms and legs quivered from effort. I had no choice but to admit defeat.

Since that day, I have become enthralled with climbing. I can now climb the route named Tics are for Kids, and continue to look for new challenges. However for me, it is not the progress I make or the feeling of accomplishment when I make it to the anchors of a route that makes climbing so enjoyable. The reason I love climbing is that when I tie into that rope and my feet leave the ground, my worries, to do list, fears, doubts, and all the other thoughts made necessary by are left on the ground below me. When I climb the only thoughts that dare enter my mind are those concerning where to put my hands and feet. On the rock is the only place I've found where I can truly relax, and re-create myself.

Guided Walks and Talks

Schedules are effective from Memorial Day Weekend until Labor Day 2014.



PROGRAM TITLE	LOCATION	DURATION	SUN	MON	TUE	WED	THU	FRI	SAT
Children's Program This ranger led program will include activities such as: Wildlife of the Obed, Creatures of the Night, Storytime, Insect Discovery, and much more. Meet at the Obed Visitor Center. Children of all ages are encouraged to participate.	Obed Visitor Center	45 minutes						10:30 AM	
Rock Creek Campground Program Meet a ranger at the bulletin board by the campground registration for activities such as: Nature games, Emory River Nature Trail hike, Scavenger hunt and Old Time Riddles. Children of all ages are encouraged to participate.	Rock Creek Campground	1 hour							10:30 AM
Nemo Day Use Program Meet a ranger at the Nemo Day Use Area for programs such as; Critters in the Creek, Nature Trail Hike, History Walk on Nemo Bridge, and much more. Children of all ages are encouraged to participate.	Nemo Day Use Area	1 - 1 1/2 hours							2:00 PM
Lilly Bluff Trails Excursion Boulder fields, sandstone sculpted cliffs, moist-rich forests and seasonal wildflowers are some of the encounters you will experience on this ranger led activity. Meet at the Lilly Bluff Overlook Parking Area.	Lilly Bluff Overlook Parking Area	1 hour	11:00 AM					3:00 PM	
Climb with a Ranger The first Saturday of every month meet at Lilly Bridge at 11 a.m. The park will provide all of the gear. All that you need to bring is drinking water, sturdy footwear, a willingness to try new things and a can-do attitude. Depending on participant interests and ability levels, we will travel to one of several different climbing areas around the park and will have participants back to their vehicles by approximately 3 p.m. (ET).	Lilly Bridge	4 hours							11:00 AM

KNOW BEFORE YOU GO

Saturday Programs on August 2nd will be cancelled due to Coffee with a Ranger and Climb with a Ranger Program.

All programs are free. Programs schedules are effective until Labor Day.

Wear sturdy walking shoes for hikes. You may also want to bring along bug spray and drinking water.

All children must be accompanied by a parent or guardian at all times.

Programs may be cancelled due to high winds or lightning.

Black bears and other wildlife frequent the area; visitors must follow food and garbage storage regulations.

Pets must be restrained on a leash at all times. Owners are expected to clean up pet waste and dispose of it properly.

Inquire at the Visitor Center about other programs offered during the week.



Hey Ranger!

Most commonly asked questions at Obed WSR....



How much does it cost to visit the Obed?

The Obed is free to all visitors all year round. For those wishing to camp overnight at the Rock Creek Campground, the fee is \$7 per night and is payable at the campground. The campground is run on a first-come, first-served arrangement. No reservations are needed.

Do you offer a shuttle service to the river?

No.

Is backcountry camping allowed in the park?

Yes. A free backcountry camping permit can be obtained at the Obed Visitor Center or online at <http://www.nps.gov/obed/playourvisit/backcountry-camping-permits.htm>.

What is the best time of year to see the Obed?

You can find something of interest every time of the year. However, many people come during the spring to kayak the river. Many others come during the fall to view the wide variety of leaves changing colors. Avid campers populate our Rock Creek Campground most often during the summer months.

How often is the Climb with a Ranger Program?

The Climb with a Ranger Program takes place on the first Saturday of each month. Contact the Visitor Center for more details.

What type of fish can be caught at the Obed?

Smallmouth Bass, Bluegills, Shiners, Darters, Catfish, and even an occasional Muskie can be caught at the Obed.

Can I bring my dog to the Obed?

Certainly. However, all pets must remain on a leash of no more than six feet in length. Never leave your pet unattended.

Where is the Obed Visitor Center located?

The Obed Visitor Center is located at 208 N. Maiden St in downtown Wartburg, Tennessee. It is open from 9 a.m. to 5 p.m. ET daily.

What type of license does one need to fish at the Obed?

A common Tennessee fishing license is all that is required.

What holidays is the park closed?

The Obed WSR is open all year round. However the Visitor Center is closed on Thanksgiving, Christmas, and New Year's Day.

What time zone is the Obed located?

Most of the Obed WSR is located on the Eastern Time zone, including the Visitor Center.

How many rock climbing routes does the Obed have?

The Obed currently has over 300 different rock climbing routes, ranging from sport (rope) climbing to boulder climbing.

Do you have a park movie?

Yes. The Obed park movie is shown upon request inside the Obed Visitor Center. It lasts about 15 minutes long.

Are there restroom facilities in the park?

Yes. Restroom facilities can be found at the Nemo, Lilly Bridge, Lilly Bluff, Jett, and Barnett sections of the park.

Is there a river outfitter in town nearby?

Not currently.

What classification of rapids are available at the Obed?

The various sections of the Obed WSR run from a Class II to a Class IV rapid. The sections include Clear Creek, Daddys Creek, the Emory River, and the Obed River.

Where can I enjoy a picnic lunch at the Obed?

Many people picnic at the Nemo section of the park, where picnic tables and small grilling stations are located. Still others enjoy taking a bag lunch to Lilly Bluff and enjoying the scenery at the Overlook while eating.

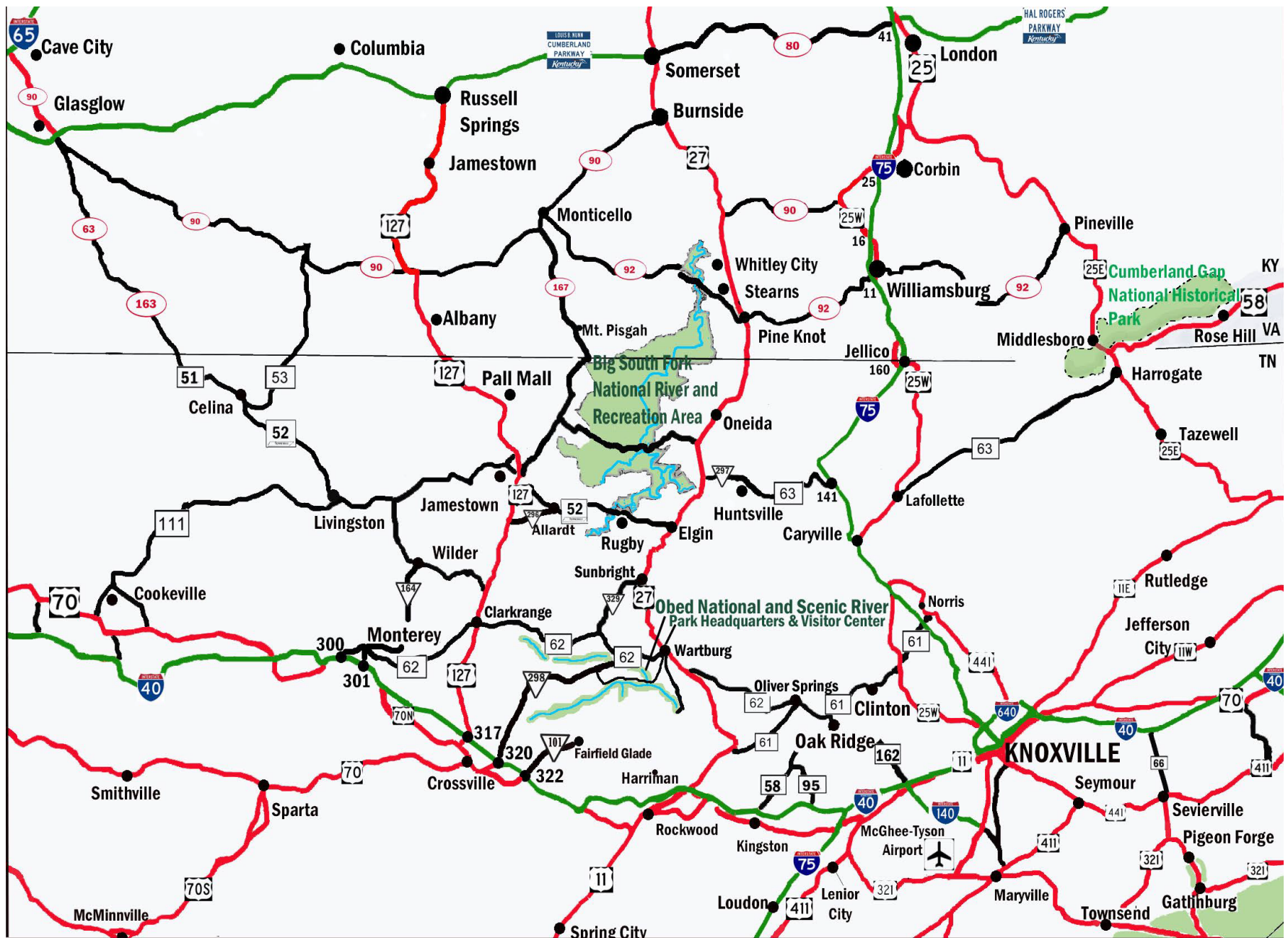
Where are your hiking trails located?

Most of Obed's hiking trails are located at the Lilly Bluff section of the park. They include the Overlook Trail, the Point Trail, the Bridge Trail, and the Boulder Trail. Several trails can also be found at the Nemo section of the park. They include the Emory River Nature Trail, and our section of the Cumberland Trail.



National Park Service
U.S. Department of the Interior

Obed Wild and Scenic River
PO Box 429
Wartburg, TN 37841



Obed Wild and Scenic River

PO Box 428
208 N. Maiden Street
Wartburg, TN
(423) 346-6294
9:00 a.m. to 5:00 p.m. ET daily.
Open daily.

Crossville Visitor Center

176 River Otter Drive
Crossville, TN 38571
(931) 787-1755
Memorial Day through Labor Day
9:00 a.m. to 5:00 p.m. CT
Saturdays and Sundays



SCAN THIS CODE
for directions from website

DIAL 911
for EMERGENCIES

EMERGENCY NUMBERS

Morgan County Ambulance
Wartburg, TN
(423) 346-6601

Morgan County Sheriff
Wartburg, TN
(423) 346-6262

Morgan County Medical Center
224 Old Mill Road
Wartburg, TN
(423) 346-6221

Roane Medical Center
412 Devonia Street
Harriman, TN
(865) 882-1323