



## Scenic Serenity



Welcome to Obed Wild & Scenic River. For many visitors, the autumn season is a favorite time of the year to visit the park, and to take advantage of all that it has to offer during the cooler temperatures. And whether you prefer to explore the park on foot, or on the water, Obed has many miles of both that await your discovery.

The panorama of colors on the trees, arrival of cooler temperatures, and the sound of surging whitewater rapids flowing down Clear Creek, Daddys Creek, the Emory and Obed Rivers, give outdoor enthusiasts a bountiful feast for the senses.

The Obed is also a place for recreation. Rock climbing has grown in popularity over the past several years. Whitewater paddling is always an exciting and exhilarating activity in the fall for the intrepid. And bird watching, fishing, and hiking are classic activities that never disappoint.

This news guide is designed to help you make the most of your visit, whether it is for an hour, a day, or a week. Inside these pages you'll find practical information such as directions, and to help you make plans for what interests you most. And, you can always chat with a park ranger inside the Obed Visitor Center to get the latest information on upcoming events and tips for visiting the park.

Thank you for spending some of your time this autumn at Obed Wild & Scenic River.



Snowed-over trail to Lilly Bluff Overlook



Hail Caesar mushrooms

### Welcome to Obed Wild & Scenic River!

As the National Park Service centennial celebration continues, it serves as a springboard to the next 100 years. Obed Wild and Scenic River has welcomed many new and returning visitors in 2016, and they all have participated in the celebration. Soon, visitors will see the park draped in a kaleidoscope of vibrant fall colors, and many will take advantage of the scenic beauty of the Cumberland Plateau by hiking, kayaking, rock climbing, bird and nature watching, camping, and fishing.

Fall is a time when change is most evident at the Obed. The rushing whitewater from Class II-IV rapids race over the rocks in faster currents. The leaves from a wide variety of trees along trails begin to change color. And the temperature naturally get cooler and more comfortable. One day simply is not enough time to explore all that the Obed has to offer.

The best place to start your visit is at the Obed Visitor Center in downtown Wartburg, where park rangers will be happy to assist you in answering your questions, and helping you plan your trip. While at the visitor center, you can also enjoy viewing the park's award-winning video *The Obed Wild & Scenic River: Find Yourself Here*. You can also purchase a variety of items to remember your trip from the Bookstore.

Thank you for being a part of the NPS Centennial by making the Obed one of the parks that you've found in 2016.

Niki Stephanie Nicholas  
Superintendent

### 4 Park Map

This map shows how to get to the most popular points of interest in our park.

### 6 Walks and Talks Schedule

Find out when the next ranger program will take place and join us.

### 7 Hey Ranger!

See what the commonly asked questions are for the park. See if your questions are answered here.





National Park Service  
U.S. Department of the Interior

### Obed Wild & Scenic River

#### Mailing Address

PO Box 429  
Wartburg, TN 37887

#### E-mail

obri\_information@nps.gov

#### Park Headquarters

423-346-6294



### STAY CONNECTED WITH US

Follow us on Twitter  
**@ObedNPS**

Like us on Facebook as  
**ObedNPS**

Follow us on Instagram as  
**ObedNPS**

Subscribe to our YouTube channel at  
**Obed Wild & Scenic River**

Visit our website at  
**www.nps.gov/obed**

**The National Park Service cares for the special places saved by the American people so that all may experience our heritage.**



**WiFi is available at the Visitor Center.**



# Events Calendar

All events are Eastern Time. All interpretive programs are subject to change.  
Contact Obed Wild and Scenic River Visitor Center at (423) 346-6294 for program details.

### ASTRONOMY/DARK SKIES PROGRAM

The night skies over the Obed offer excellent viewing of the Milky Way, constellations and planets. The park will offer astronomy programs most months to engage visitors with the wonders of the night sky. Like us on Facebook or follow us on Twitter and/or Instagram for upcoming program details.

### HEALTHY HIKES

As we celebrate the National Park Service's Centennial year, the monthly Obed Healthy Hikes create opportunities for park visitors to explore the unique geology, biodiversity, and history of the Obed. These ranger-led hikes promote healthy lifestyles while fostering connections in your national park.

### ANNUAL PHOTO CONTESTS

Do you have some great digital images that highlight the spectacular views, historic sites, recreational opportunities or park biodiversity? Each year the park invites photographers of all skill level to submit entries for an annual exhibit at the Obed WSR Visitor Center. Photographs may be submitted into one of seven categories: Action/Adventure, Artistic, Flora & Fauna, Youth and Landscapes. It is never too early to get started! Visit <https://www.nps.gov/obed/learn/photosmultimedia/obed-photo-contest.htm> for more information.

### COFFEE AND CLIMB WITH A RANGER PROGRAM

On the first Saturday of each month, join a park ranger at Lilly Bridge for a cup of Joe and to learn about climbing opportunities at the Obed. The Climb with a Ranger program introduces rock climbing to individuals who have always wanted to try the activity but who did not know where to begin. All necessary gear is provided. Rock climbers of all ages are encouraged to attend. These programs are held regardless of most weather conditions. No reservations are necessary for these free events.

### ADOPT-A-CRAG

In celebration of National Public Lands Day the Obed will team up with the East Tennessee Climbing Coalition to host the 17th annual Adopt-A-Crag event on Saturday, September 10th. To learn how you can volunteer, contact the volunteer coordinator at 423-346-6294.

## BECOME A JUNIOR RANGER

Obed WSR has a Junior Ranger book and a cool cloth patch for you to earn for your jacket or book bag. Kids from age 4 to 12 are invited to use this book to explore Obed with Obediah, the Owl. Many activities will help you learn about animals, plants, rocks, and rivers.

The Junior Ranger book is now available in Spanish! Ask a ranger for details!



# Fee Free Days at Obed

On a variety of holidays, as well as the annual "National Park Week," entrance fees are waived at all National Parks. Learn more about fee free days in the national parks at <http://www.nps.gov/findapark/feefreeparks.htm>.

Although Obed does not collect entrance fees, we do have use fees. The park's superintendent is in support of fee free days for camping at Rock Creek Campground. The following dates are the remaining official fee free days of 2016:

September 24—National Public Lands Day  
November 11—Veterans Day

Fee Free Days for 2017 will be announced in late December.



## Be a part of our team... become a volunteer

For information on how you can become a National Park Service volunteer, contact Volunteer Coordinator Veronica Greear at (423) 346-6294, or email us at [obri\\_information@nps.gov](mailto:obri_information@nps.gov). Visit us online at [www.nps.gov/obed/supportyourpark/volunteer.htm](http://www.nps.gov/obed/supportyourpark/volunteer.htm) to see all of the wonderful opportunities that are available.



## Having a race, or getting married?



Special events in the park such as river races or weddings require a special use permit. If you need more information about how to obtain a special use permit, contact the Fee Program Manager, Letitia Neal at 423-569-2404 ext. 240 or by email at [tish\\_neal@nps.gov](mailto:tish_neal@nps.gov). Information can also be found on our website at [www.nps.gov/obed/playourvisit/permits.htm](http://www.nps.gov/obed/playourvisit/permits.htm).

## User Fees of Obed Wild & Scenic River

### CAMPING FEES

ROCK CREEK CAMPGROUND  
ALL SITES 11 SITES  
\$10—NIGHT (8 PERSON MAX.)\*  
Make reservations at [recreation.gov](http://recreation.gov)  
or by calling 1-877-444-6777



### PERMITS

HOG PERMITS \$5\*/PERSON

### PASSES

INTERAGENCY SENIOR PASS  
\$10 ONE TIME FEE  
INTERAGENCY ACCESS PASS  
FREE WITH PROOF OF DISABILITY  
INTERAGENCY PARK PASS  
\$80  
INTERAGENCY MILITARY PASS  
FREE WITH PROOF OF ACTIVE MILITARY DUTY



GET YOUR INTERAGENCY PASS ONLINE AT [store.usgs.gov/pass/index.html](http://store.usgs.gov/pass/index.html) or at one of our visitor centers.

### CONCESSIONAIRE

Eastern National  
Bookstore  
(423) 346-6295  
[www.eparks.com/store](http://www.eparks.com/store)

### PERMITTED OUTFITTER

Ace Kayaking School  
River Guide  
2368 Old Federal Rd  
Ocoee, TN 37361  
865-385-3204  
[acekayaking@gmail.com](mailto:acekayaking@gmail.com)  
[www.acekayaking.com](http://www.acekayaking.com)

## LOST AND FOUND

Report any lost items to rangers at the Obed Visitor Center located at 208 North Maiden Street in downtown Wartburg, Tennessee. Found items should be turned in at this location as well.

## Pets

Pets are allowed within the park. However, in order to protect your pet and the park's wildlife, all pets must be kept on a leash (no longer than 6 feet) at all times even if you have your dog with you when riding a horse. Be sure to clean up after your pet.

Before coming to the park make sure your pet is up to date on all vaccinations including rabies. Pets should have identification and rabies tags on their collars. Make sure you check for ticks on you and your pet after visiting the park.

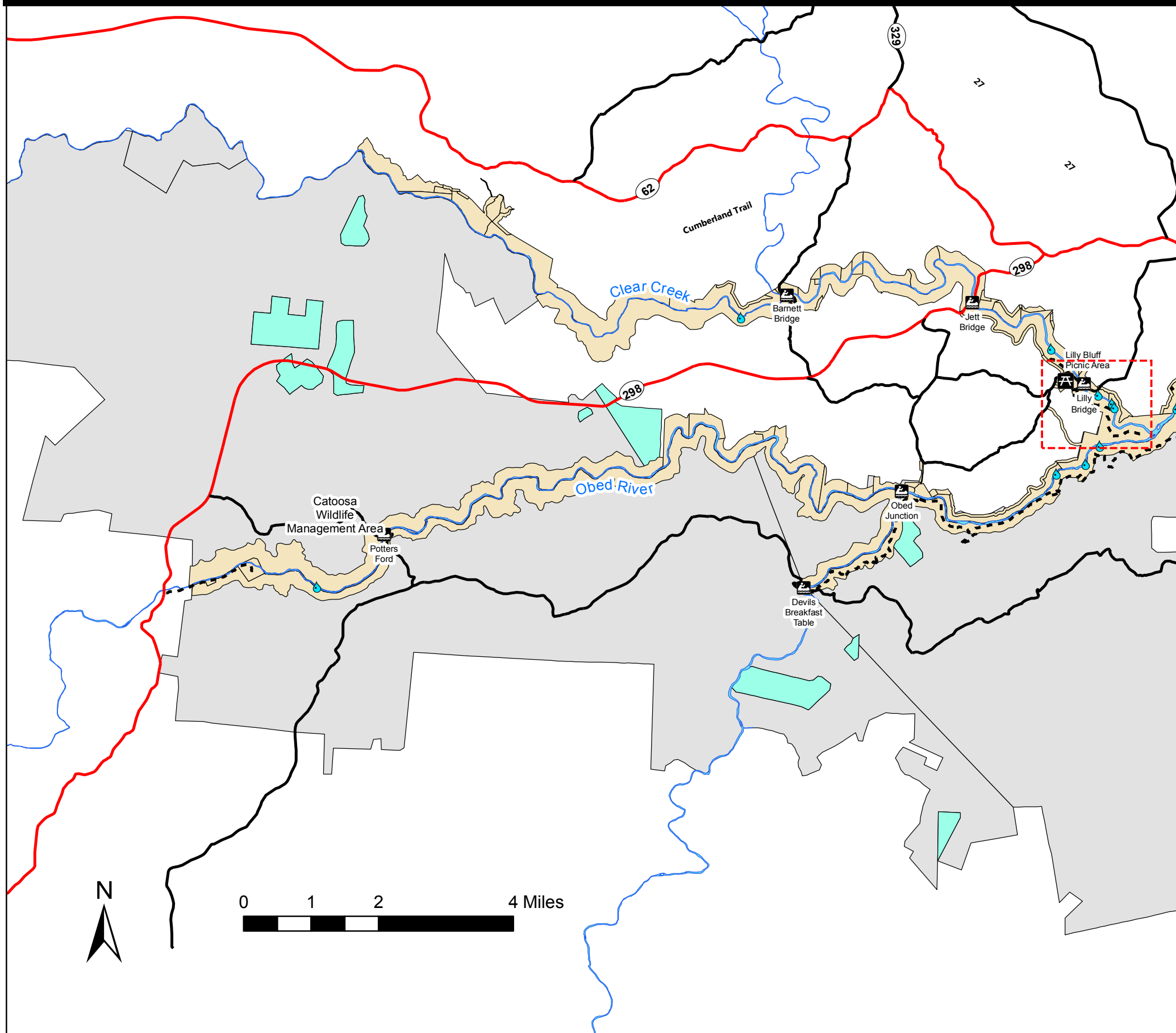


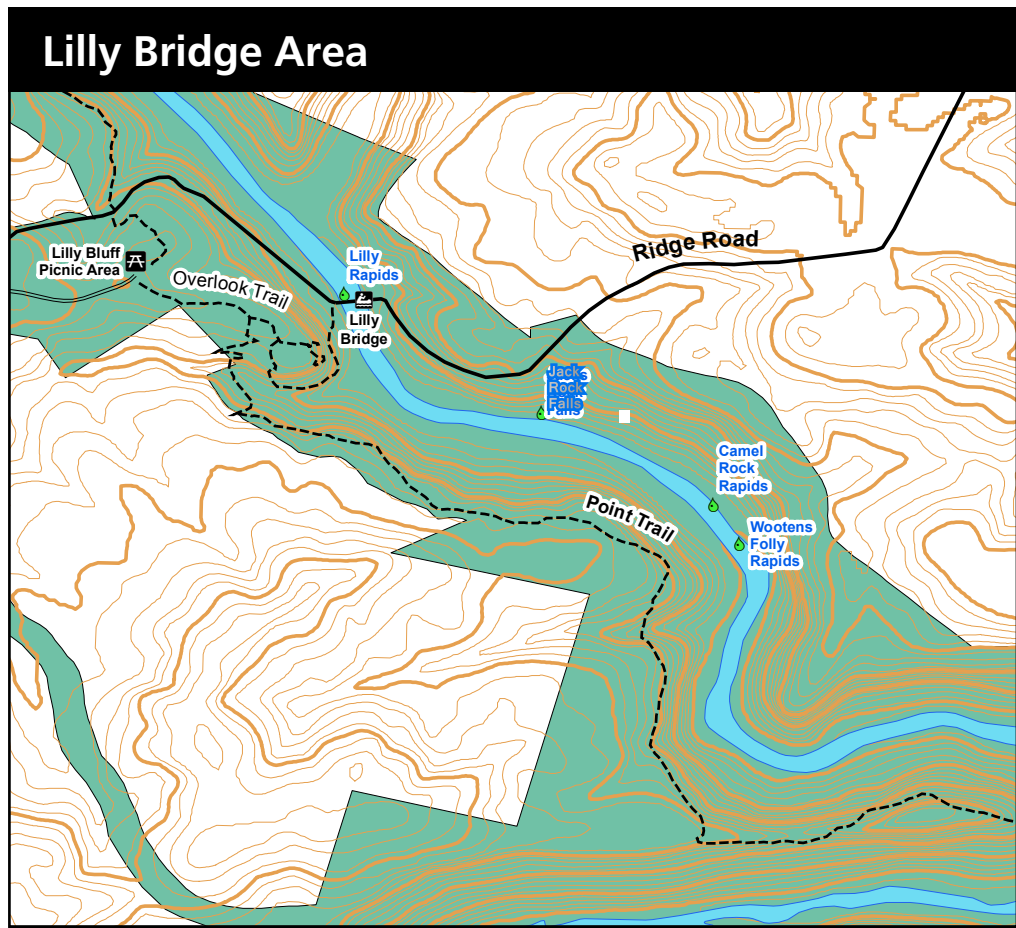
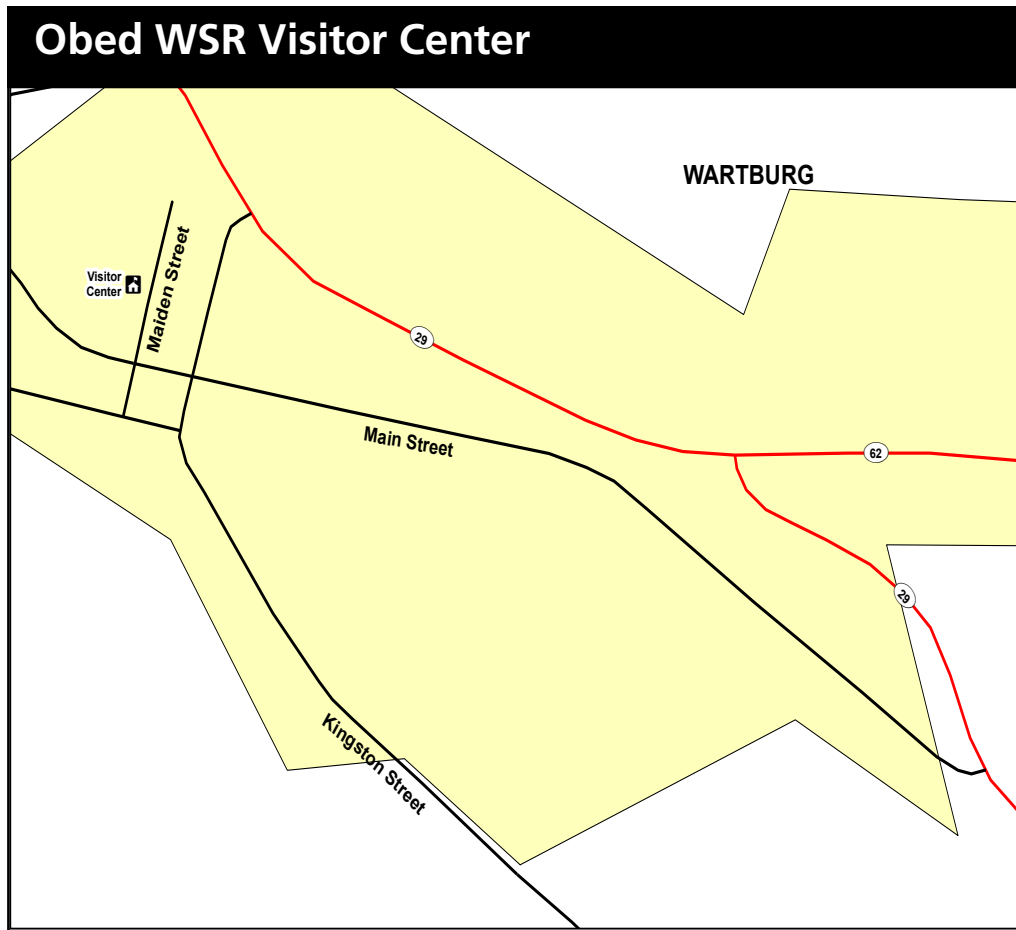
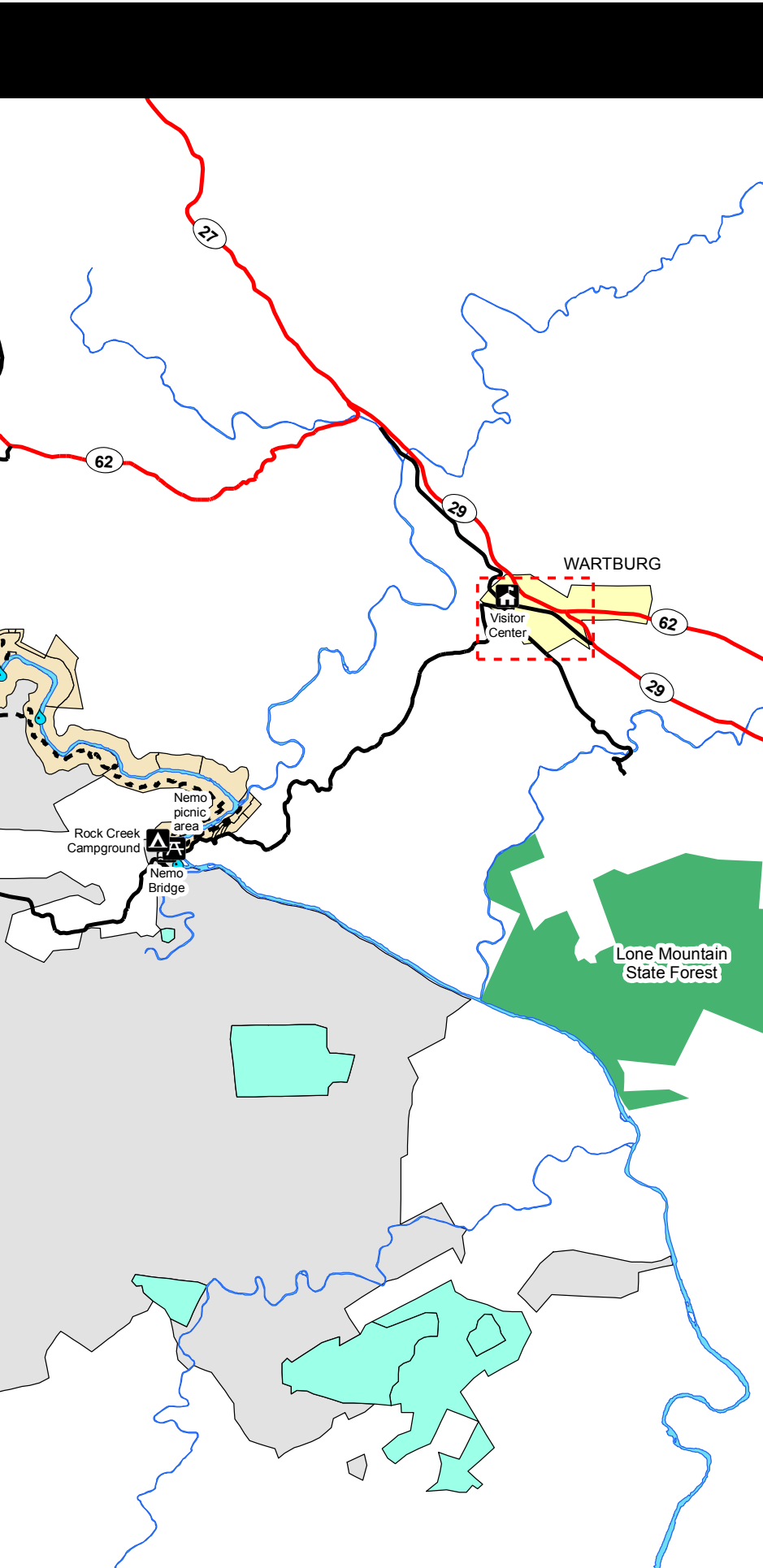
## BACKCOUNTRY PERMITS

Anyone planning to camp overnight in the backcountry must obtain a free backcountry permit. A permit can be obtained at the Obed Visitor Center or you may download the form online by scanning the QR code here (<http://www.nps.gov/obed/playourvisit/upload/OBRI-Backcountry-Use-Permit.pdf>).



# Obed Wild & Scenic River





# Hiking Trails of the Obed

|   | Trail Name                              | Rating             | Distance             | Time               | Description   |
|---|---|--------------------|----------------------|--------------------|---|
| 1 | Point Trail                             | Moderate           | 1.9 miles            | 3 hours round trip | This trail culminates on the narrow, exposed ridge that separates the Obed River from Clear Creek before the two flow together.   |
| 2 | Bridge Trail                            | Moderate           | .3 mile              | 15-20 minutes      | This trail follows steep terrain from Lilly Bridge to the Overlook Trail.   |
| 3 | Overlook Trail                          | Easy               | .3 mile              | 10 minutes         | Flat stroll through Hemlock forest to a great overlook of the Clear Creek Gorge.  |
| 4 | Boulder Field Trail                     | Easy/Moderate      | .2 mile              | 10 minutes         | Trail leaves the Lilly Bluff Overlook parking area and winds through huge boulders and impressive stands of Hemlock.  |
| 5 | Nature Loop                             | Moderate           | 1 mile round trip    | 30 minutes         | Trail leaves from Rock Creek parking area and follows the Cumberland Trail to loop back to parking area. Portions of this trail follow the river.   |
| 6 | Alley Ford                              | Moderate/Difficult | 2.6 miles            | 2 1/2 hours        | Trail follows the Cumberland Trail to an old popular river ford site.   |
| 7 | Devil's Breakfast Table<br>- Rock Creek | Difficult          | 14.2 miles           | 8 hours minimum    | This trail passes through rugged terrain and offers numerous overlooks of the river canyon. Large portions of this trail are within the Catoosa Wildlife Management Area and are subject to periodic closures |
| 8 | Nemo to Wartburg<br>Trail               | Easy/Moderate      | 2.6 miles round trip | 2 hours            | This trail leaves from Rock Creek parking area, crosses over the historic iron Nemo Bridge, and reaches a stunning overlook of the Obed at its confluence with the Emory River.                               |

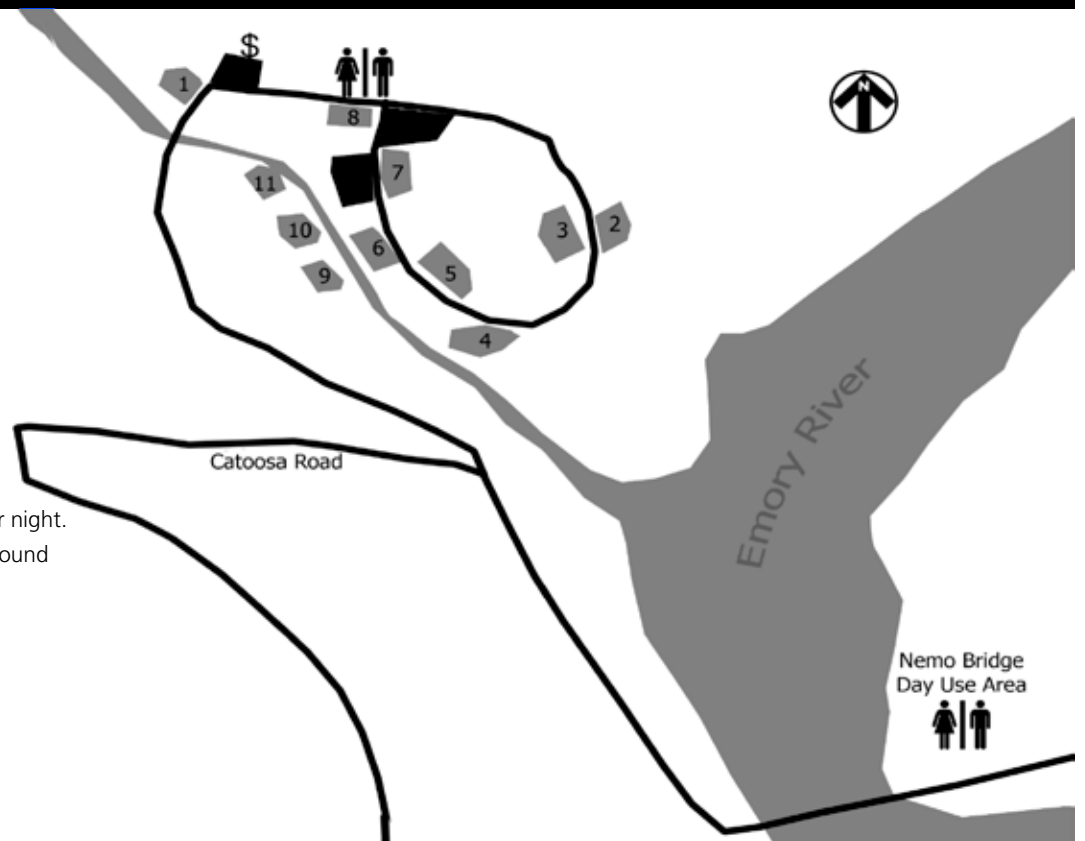
## Rock Creek Campground



Rock Creek is a primitive campground open year-round and offers eleven campsites at \$10 per night. There are food storage lockers and wildlife-proof garbage cans to use throughout the campground as well as a centrally located vault toilet facility. No drinking water is located at this area.

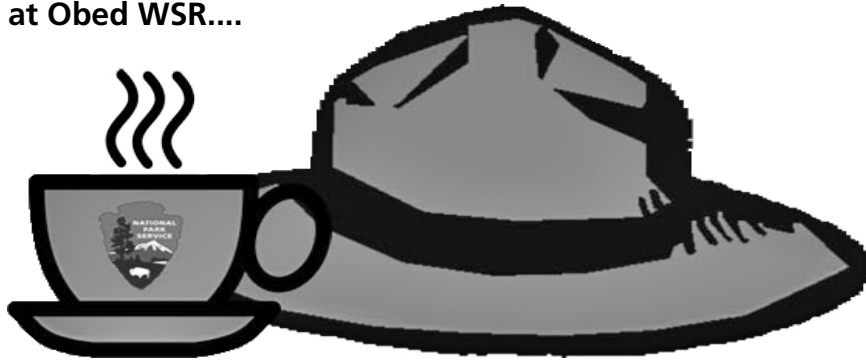
As of October 1, 2016, the campground will be on the National Recreation Reservation Service. Reservations can be made up to 6 months in advance by calling 1-877-444-6777 or going online at [www.recreation.gov](http://www.recreation.gov). For more information, call (423) 346-6294.

**Experience all that Obed has to offer by staying a while.**



# Hey Ranger!

Most commonly asked questions at Obed WSR....



## How will I know when Catoosa Wildlife Management Area is closed during the Fall/Winter?

Inquiries can be made by contacting the Tennessee Wildlife Resources Agency (TWRA) Region III Office at 1-800-262-6704 or pick up a free TWRA Hunting & Trapping Guide at the Obed WSR Visitor Center.

## Is backcountry camping allowed in the park?

Yes. A free backcountry camping permit is required and can be obtained at the Obed Visitor Center or online. See page 3 for more information.

## What is the best time of year to see the Obed?

You can find something of interest every time of the year. However, many people come during the spring to kayak the river. Many others come during the fall to view the wide variety of leaves changing colors. Avid campers populate our Rock Creek Campground most often during the summer months.

## Can I bring firewood from home into the park?

Only if the firewood is from Morgan or Cumberland Counties, otherwise wood is available from local suppliers.

## Can I raft at the Obed?

Due to various sections of the Obed WSR that are Class II—IV rapids, we encourage visitors to have whitewater experience. Visit <https://www.nps.gov/obed/planyourvisit/river-gauge-readings.htm> to obtain the latest river gauge readings.

## Is ginseng allowed to be collected within the park?

No. It is illegal for any person to dig, harvest, collect or remove wild ginseng from any park owned lands.

## Can I bring my dog to the Obed?

Certainly. However, all pets must remain on a leash of no more than six feet in length. Never leave your pet unattended.

## Where is the Obed Visitor Center located?

The Obed Visitor Center is located at 208 N. Maiden Street in downtown Wartburg, Tennessee. It is open from 9 a.m. to 5 p.m. ET daily.

## What holidays is the park closed?

The Obed WSR is open all year round. However the Visitor Center is closed on Thanksgiving, Christmas, and New Year's Day.

## Where are the recycle bins located?

They can be found at the Obed Visitor Center, Rock Creek Campground, Nemo Day Use Area, and the Lilly Bluff Parking Lot.

## How many rock climbing routes does the Obed have?

The Obed currently has almost 400 different rock climbing routes, ranging from sport and traditional climbing to bouldering.

## Do you have a park movie?

Yes. The Obed park movie is shown upon request inside the Obed Visitor Center. It is about 15 minutes long.

## Are there restroom facilities in the park?

Yes. Restroom facilities can be found at the Nemo, Lilly Bridge, Lilly Bluff, Jett, and Barnett sections of the park.

## How can I find out about ranger-led activities or park events?

Visit and like us as @ObedNPS on Facebook, Twitter, and Instagram.

## What classification of rapids are available at the Obed?

The various sections of the Obed WSR run from Class II—IV rapids. The sections include Clear Creek, Daddys Creek, the Emory River, and the Obed River.

## Where can I enjoy a picnic lunch at the Obed?

Many people picnic at the Nemo section of the park, where picnic tables and small grilling stations are located. Still others enjoy taking a bag lunch to Lilly Bluff and enjoying the scenery at the Overlook while eating.

## How much does it cost to visit the Obed?

Obed WSR is free to all visitors year round. For those wishing to camp overnight at the Rock Creek Campground, the fee is \$10 per night. This fee must be paid by making a reservation at [www.recreation.gov](http://www.recreation.gov) or by calling 1-877-444-6777. You may also pay this fee at the Obed Visitor Center from 9:00 a.m. to 5:00 p.m. ET daily.

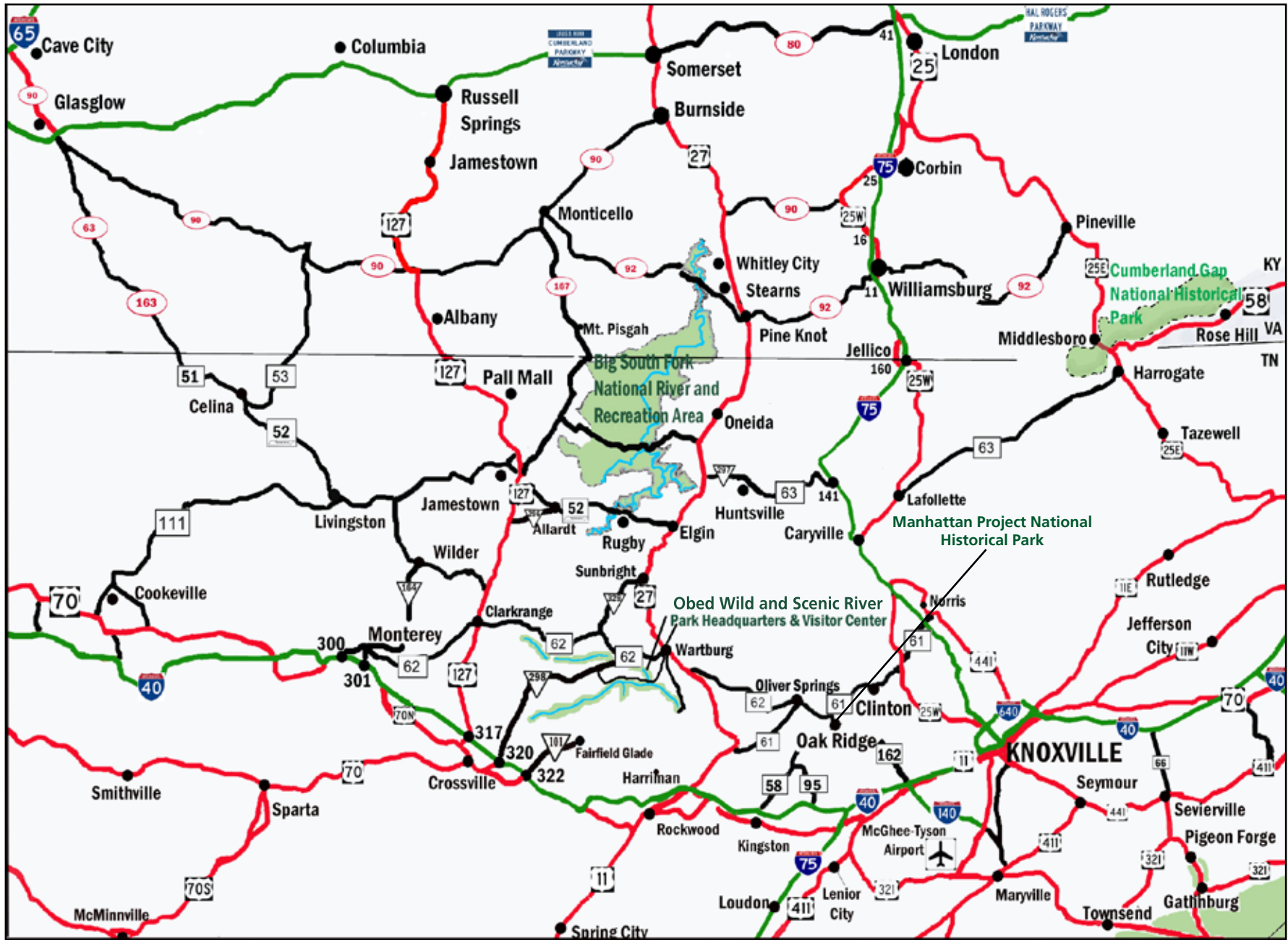
## Where are your hiking trails located?

Most of Obed's hiking trails are located at the Lilly Bluff section of the park. They include the Overlook Trail, the Point Trail, the Bridge Trail, and the Boulder Trail. Several trails can also be found at the Nemo section of the park. They include the Emory River Nature Trail, and our section of the Cumberland Trail.



National Park Service  
U.S. Department of the Interior

Obed Wild and Scenic River  
PO Box 429  
Wartburg, TN 37841



**Obed Wild & Scenic River**

PO Box 429  
208 N. Maiden Street  
Wartburg, TN  
(423) 346-6294  
9:00 a.m. to 5:00 p.m. ET  
Open daily.

**Crossville Visitor Center**

176 River Otter Drive  
Crossville, TN 38571  
(931) 787-1755  
9:00 a.m. to 5:00 p.m. CT  
Saturdays and Sundays



SCAN THIS CODE  
for directions from website

**DIAL 911**  
for EMERGENCIES

**EMERGENCY NUMBERS**

Morgan County Ambulance  
Wartburg, TN  
(423) 346-6601

Morgan County Sheriff  
Wartburg, TN  
(423) 346-6262

Morgan County Medical Center  
224 Old Mill Road  
Wartburg, TN  
(423) 346-6221

Roane Medical Center  
412 Devonia Street  
Harriman, TN  
(865) 882-1323

Ambulatory Care Center  
1236 Knoxville Hwy  
Wartburg, TN  
(423) 346-5566