

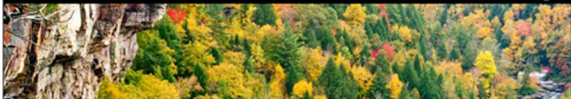
Obed Wild & Scenic River

Official Visitor Guide

National Park Service
U.S. Department of the Interior



Fall/Winter Edition 2018



The days are getting shorter, and the air is getting cooler, but there's still plenty to see and do in the fall/winter months. The myriad trees will display vibrant colors before they drop, and the occasional snowfall adds a serene blanket upon the Cumberland Plateau. This time of transition is a special time of year to visit the park.

Fall is a time of transition for Obed. The park's vibrant fall foliage peaks in late October, and once the leaves are gone, unobstructed views of panoramic vistas and detailed ice sculptures cannot help but be noticed. Wildlife is busy getting ready for the winter months by preparing their dens, growing out their winter coats, and storing up enough food to last them through spring. They can often times be clearly seen during this time of year, but please respect wildlife and observe them from a distance.

The temperatures during this time of year are ideal for taking in the park's 5,000 acres by hiking its 20+ miles of trails, and along 45 miles of stunning freeflowing rivers and streams. Fall is also a great time for camping at Rock Creek Campground, which is open year-round. Be sure to check the weather forecast ahead of time and pack accordingly to ensure a safe and enjoyable experience regardless of your activity.

Take the opportunity to read this guide, so you can make the best use of your time at Obed Wild & Scenic River. If you would like to learn more about the park, its resources, and its recreational opportunities, you can talk with a park ranger at the Obed Visitor Center in Wartburg, join us on one of our free ranger-led programs, or visit us online at www.nps.gov/obed.



Melton Mill Falls

Welcome to Obed Wild & Scenic River!

This is a very special year. Obed Wild & Scenic River will be celebrating the 50th anniversary of the Wild & Scenic Rivers Act. On October 2, 1968, President Lyndon Johnson signed the Wild & Scenic Rivers Act to preserve certain rivers with outstanding natural, cultural, and recreational values in a free-flowing condition for the enjoyment of present and future generations. Throughout 2018, the park will be offering special events to celebrate this momentous signing.

Obed WSR is one of the best examples of a free-flowing river system in the eastern United States. And the beauty of Obed WSR is on full display in the fall and winter months. Both first time and recurring visitors are sure to be impressed by spectacular scenery and fall foliage.

Whether you go for a hike along one of the park's trails, participate in one of our award-winning ranger-led programs, go whitewater paddling, or just go for a relaxing afternoon of fishing, there is something here for everyone.

A great way to start your visit to YOUR park is by stopping by the visitor center in downtown Wartburg. Knowledgeable park staff will give you the latest park information and updates to help you make the most of your park experience. While you're there, watch our award-winning park film. It's only 12 minutes long and does a fabulous job of showing why this place is so special.

Regardless of which activity you choose to enjoy, I invite you to #FindYourWay to get out and explore America's national scenic, recreational, and historic wild and scenic rivers.

Niki Stephane Nicholas

Niki Stephane Nicholas
Superintendent

4 Park Map

This map shows how to get to the most popular points of interest in our park.

6 Hiking Trails

Take a hike down one of our many beautiful scenic trails.

7 Hey Ranger!

See what the commonly asked questions are for the park.



National Park Service
U.S. Department of the Interior

Obed Wild & Scenic River

Mailing Address

PO Box 429

Warburg, TN 37887

E-mail

obri_information@nps.gov

Park Headquarters

423-346-6294



STAY CONNECTED WITH US

Follow us on Twitter

@ObedNPS

Like us on Facebook as

ObedNPS

Follow us on Instagram as

ObedNPS

Subscribe to our YouTube channel at

Obed Wild & Scenic River

Visit our website at

www.nps.gov/obed



WiFi is available at the
Visitor Center.

Events Calendar

All events are Eastern Time. All interpretive programs are subject to change.

Contact Obed Wild and Scenic River Visitor Center at (423) 346-6294 for program details.

ASTRONOMY/DARK SKIES PROGRAM

As part of the Obed's Dark Sky Initiative, the Obed offers Night Sky programs to provide visitors an in-depth look into the night sky, while promoting its importance as a global resource. Like us on Facebook to stay up to date on upcoming viewing events, where telescope viewing is provided.

HEALTHY HIKES

The Obed Healthy Hikes provide the public with ranger-led hikes that allow park visitors the opportunity to further discover our national parks. Many of the hike have themes that are tailored to the season, such as wildflowers, birds, trees, etc. Check with the Obed Visitor Center for upcoming dates and times.

COFFEE AND CLIMB WITH A RANGER PROGRAM

On the first Saturday of each month, the Climb with a Ranger program introduces rock climbing to individuals who have always wanted to try the activity but who did not know where to begin. All necessary gear is provided. Depending on interests and ability levels, participants will travel with rangers to one of several different climbing areas around the park. Would be rock climbers of all ages are encouraged to attend. These programs will be held regardless of weather conditions. Attend one program or both. No reservations are necessary for these free events.

OBED RANGER'S CHOICE PROGRAM

Join us every Friday at 10:30 am (ET) for a Ranger's Choice Interpretive program. The topics being discussed will vary, as will the location. Please check with the Obed Visitor Center for details on each week's program.

ADOPT-A-CRAG

This annual event will occur on September 9, 2017 this year. Climbers and any interested volunteers help to pick up trash and do trail maintenance work around the park. Climbers and any interested volunteers help to pick up trash, perform trail maintenance work around the park, and treat hemlock trees to protect them from the Woolly Adelgid.

KNOW BEFORE YOU GO

- All programs are free.
- Programs may be cancelled due to extreme weather conditions.
- All children must be accompanied by a parent or guardian at all times.
- Inquire at the Visitor Center about other programs offered during the week.
- Wear sturdy walking shoes for hikes. You may also want to bring along bug spray and drinking water.
- Black bears and other wildlife frequent the area; visitors must follow food and garbage storage regulations.
- Pets must be restrained on a leash at all times. Owners are expected to clean up pet waste and dispose of it properly.

Become A Junior Ranger

Obed WSR has a Junior Ranger book and a cool cloth patch for you to earn for your jacket or book bag. Kids from age 4 to 12 are invited to use this book to explore Obed with Obediah, the Owl. Many activities will help you learn about animals, plants, rocks, and rivers.



Become A Volunteer

For information on how you can become a National Park Service volunteer, contact Volunteer Coordinator, Veronica Greear, at (423) 346-6294, or email us at obri_information@nps.gov. Visit us online at <http://www.nps.gov/obed/getinvolved/workwithus.htm> to see all of the wonderful opportunities that are available.



User Fees of Obed WSR

CAMPING FEES

ROCK CREEK CAMPGROUND

11 SITES

\$10—NIGHT (8 PERSON MAX.)*

Make reservations at recreation.gov or by calling 1-877-444-6777



PERMITS

HOG PERMITS \$5*/PERSON

PASSES

INTERAGENCY SENIOR PASS-ANNUAL—\$20

INTERAGENCY SENIOR PASS-LIFETIME—\$80 ONE TIME FEE

INTERAGENCY ACCESS PASS—FREE WITH PROOF OF DISABILITY

INTERAGENCY PARK PASS—\$80

INTERAGENCY MILITARY PASS—FREE WITH PROOF OF ACTIVE MILITARY DUTY

GET YOUR INTERAGENCY PASS ONLINE AT store.usgs.gov/pass/index.html or at one of our visitor centers.

Attention All Fourth Graders!

If you are 10 years old or in fourth grade, you can participate in a fun online activity and receive a voucher for a free 4th Grade Annual Pass. Print out the voucher and take it with you and your family to a national park, where you can serve as an ambassador and introduce your family to the National Park System. This program, called Every Kid in a Park, can be found online at <https://www.everykidinapark.gov/>. National parks and other federal lands and waters all across America are excited to share their heritage with young people.



Pets

Pets are allowed within the park. However, in order to protect your pet and the park's wildlife, all pets must be kept on a leash (no longer than 6 feet) at all times even if you have your dog with you when riding a horse. Be sure to clean up after your pet.

Before coming to the park make sure your pet is up to date on all vaccinations including rabies. Pets should have identification and rabies tags on their collars. Make sure you check for ticks on you and your pet after visiting the park.



Backcountry Camping Permits

Anyone planning to camp overnight in the backcountry must obtain a free backcountry permit. A permit can be obtained at the Obed Visitor Center or you may download the form online by scanning the QR code here (<http://www.nps.gov/obed/planyourvisit/upload/OBRI-Backcountry-Use-Permit.pdf>).



CONCESSIONAIRE

Eastern National
Bookstore
(423) 346-6295
www.eparks.com/store

PERMITTED OUTFITTER

Ace Kayaking School
River Guide
2368 Old Federal Rd
Ocoee, TN 37361
(865) 385-3204
acekayaking@gmail.com
www.acekayaking.com

Having a race or getting married?

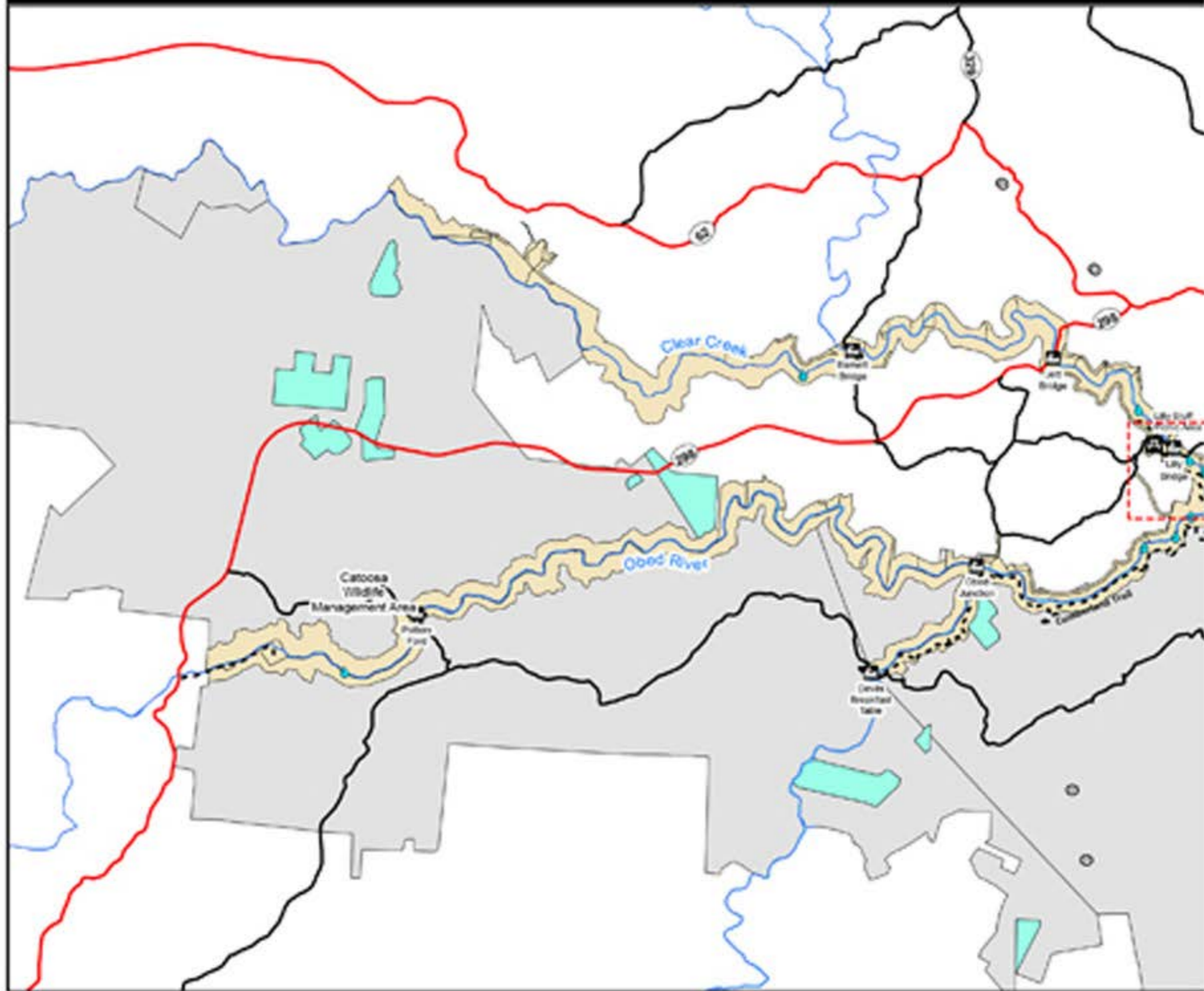
Special events in the park such as river races or weddings require a special use permit. If you need more information about how to obtain a special use permit, contact the Fee Program Manager, Letitia Neal at 423-569-2404 ext. 240 or by email at tish_neal@nps.gov. Information can also be found on our website at <http://www.nps.gov/obed/planyourvisit/special-use-permits.htm>.

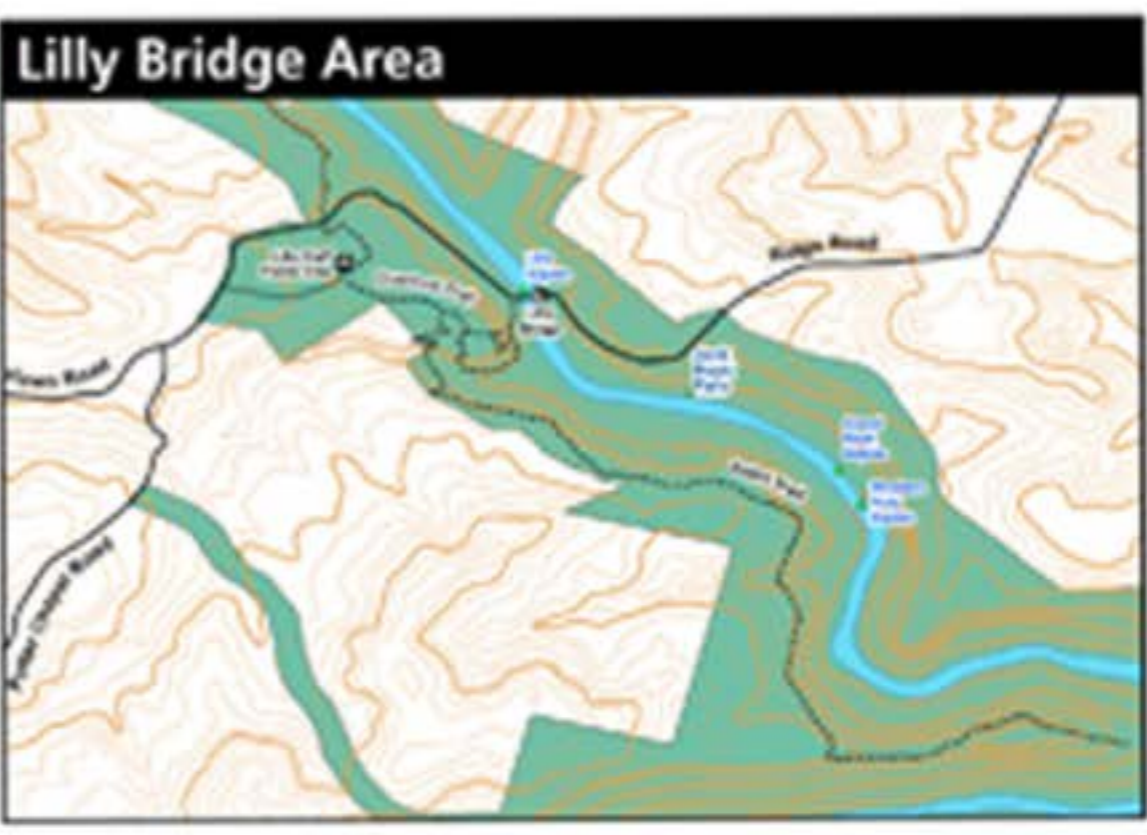


Lost and Found

Report any lost items to rangers at the Obed Visitor Center located at 208 North Maiden Street in downtown Wartburg, Tennessee. Found items should be turned in at this location as well.

Obed Wild & Scenic River





Hiking Trails of the Obed

	Trail Name	Rating	Distance	Time	Description
1	Point Trail	Moderate	1.9 miles	2 hours round trip	This trail culminates on the narrow, exposed ridge that separates the Obed River from Clear Creek before the two flow together.
2	Bridge Trail	Moderate	.3 mile	15-20 minutes	This trail follows steep terrain from Lily Bridge to the Overlook Trail.
3	Overlook Trail	Easy	.3 mile	10 minutes	Flat stroll through Hemlock forest to a great overlook of the Clear Creek Gorge.
4	Boulder Field Trail	Easy/Moderate	.2 mile	10 minutes	Trail leaves the Lily Bluff Overlook parking area and winds through huge boulders and impressive stands of Hemlock.
5	Nature Loop	Moderate	1 mile round-trip	30 minutes	Trail leaves from Rock Creek parking area and follows the Cumberland Trail to loop back to parking area. Portions of this trail follow the river.
6	Cumberland Trail-Obed River Section	Difficult	2.6 miles	2 1/2 hours	Trail follows the Cumberland Trail to an old popular river ford site.
7	Devil's Breakfast Table - Rock Creek	Difficult	14.2 miles	8 hours minimum	This trail passes through rugged terrain and offers numerous overlooks of the river canyon. Large portions of this trail are within the Catoosa Wildlife Management Area and are subject to periodic closures.
8	Cumberland Trail-Emory River Gorge Section	Moderate	2.6 miles round trip	1 hour	This section of the Cumberland Trail starts at Historic Nemo Bridge and follows the Emory River upstream to the confluence of the Emory and Obed rivers.

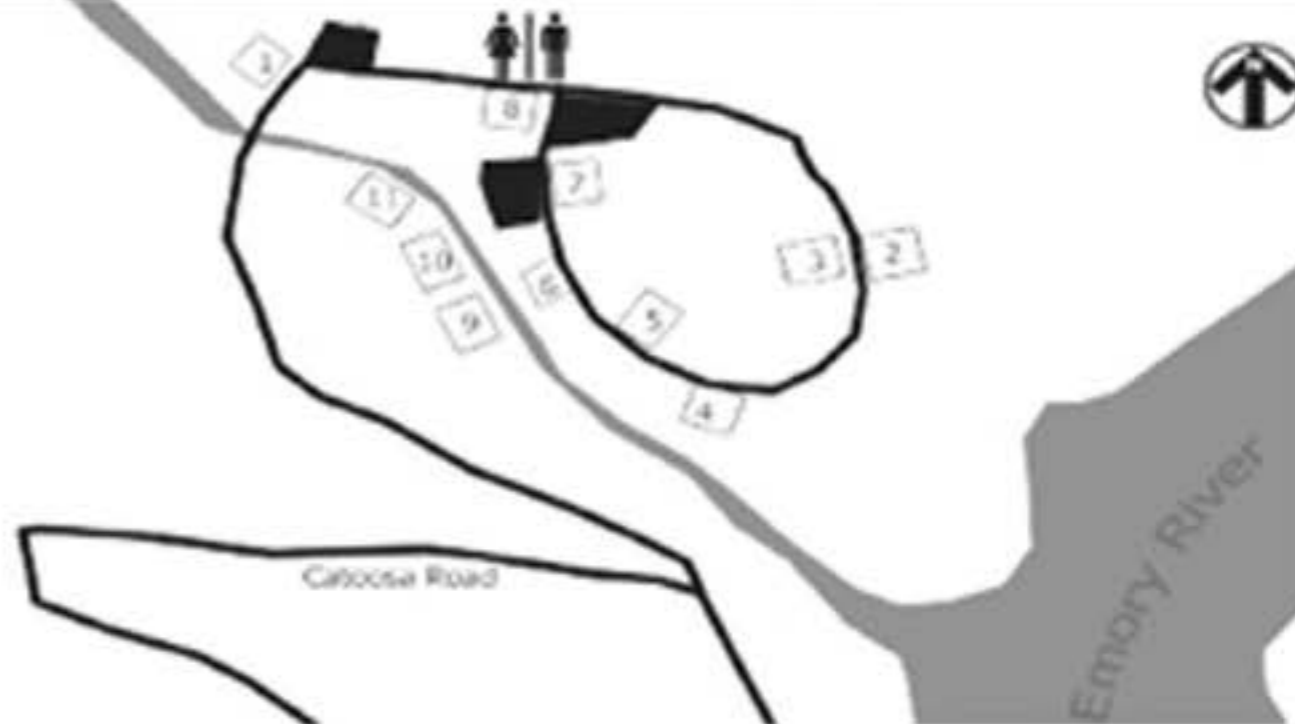
Rock Creek Campground



Rock Creek is a primitive campground open year-round and offers eleven campsites at \$10 per night. There are food storage lockers and wildlife-proof garbage cans to use throughout the campground as well as a centrally located vault toilet facility. No drinking water is located at this area.

On October 1, 2016, the campground became available for reservations on the National Recreation Reservation Service. Reservations can be made up to 6 months in advance by calling 1-877-444-6777 or going online at www.recreation.gov. For more information call (423) 346-6294.

Experience all that Obed has to offer by staying a while.



Hey Ranger!

Most commonly asked questions at Obed WSR....



How often is the Climb with a Ranger Program?

The Climb with a Ranger Program takes place on the first Saturday of each month. Contact the Visitor Center for more details.

Are there any handicap accessible trails?

Besides our fully accessible visitor center, the Lilly Bluff Overlook Trail is on level ground and is handicap accessible.

Do you have a park movie?

Yes. The Obed park movie is shown upon request inside the Obed Visitor Center. It is about 15 minutes long.

Where can I enjoy a picnic lunch at the Obed?

Many people picnic at the Nemo section of the park, where picnic tables and small grilling stations are located. Still others enjoy taking a bag lunch to Lilly Bluff and enjoying the scenery at the Overlook while eating.

How much does it cost to visit the Obed?

The Obed is free to all visitors year-round. For those wishing to camp overnight at the Rock Creek Campground, the fee is \$10 per night. Campsite reservations can be made by calling 1-877-444-6777 or by going online to www.recreation.gov.

What type of fish can be caught at the Obed?

Smallmouth and Largemouth Bass, Bluegills, Catfish, and even an occasional Muskie can be caught at the Obed.

What type of license does one need to fish at the Obed?

A Tennessee fishing license is all that is required.

Can I bring my dog to the Obed?

Certainly. However, all pets must remain on a leash of no more than six feet in length. Never leave your pet unattended.

Where are the recycle bins located?

They can be found at the Obed Visitor Center, Rock Creek Campground, Nemo Day Use Area, and the Lilly Bluff Parking Lot.

Are there restroom facilities in the park?

Yes. Restroom facilities can be found at the Nemo, Lilly Bridge, Lilly Bluff, Jett, and Barnett sections of the park.

Are there any river outfitters?

Yes. Refer to page 3 under permitted outfitters for more information.

Where are your hiking trails located?

Most of Obed's hiking trails are located at the Lilly Bluff section of the park. They include the Overlook Trail, the Point Trail, the Bridge Trail, and the Boulder Trail. Several trails can also be found at the Nemo section of the park. They include the Emory River Nature Trail, and our section of the Cumberland Trail.

Is backcountry camping allowed in the park?

Yes. A free backcountry camping permit is required and can be obtained at the Obed Visitor Center or online. See page 3 for more information.

What is the best time of year to see the Obed?

You can find something of interest every time of the year. However, many people come during the spring to kayak the river. Many others come during the fall to view the wide variety of leaves changing colors. Avid campers populate our Rock Creek Campground most often during the summer months.

Where is the Obed Visitor Center located?

The Obed Visitor Center is located at 208 N. Maiden Street in downtown Warburg, Tennessee. It is open from 9 am to 5 pm ET daily.

What classification of rapids are available at the Obed?

The various sections of the Obed WSR run from a Class II to a Class IV rapid. The sections include Clear Creek, Daddys Creek, the Emory River, and the Obed River.



National Park Service
U.S. Department of the Interior

Obed Wild and Scenic River
PO Box 429
Wartburg, TN 37841



Obed Wild and Scenic River

PO Box 428
208 N. Maiden Street
Wartburg, TN
(423) 346-6294
9 am to 5 pm ET daily,
Open daily.

Crossville Visitor Center

176 River Otter Drive
Crossville, TN 38571
(931) 787-1755
Memorial Day through Labor Day
9 am to 5 pm CT
Saturdays and Sundays



SCAN THIS CODE
for directions from website

DIAL 911
for EMERGENCIES

EMERGENCY NUMBERS

- Morgan County Ambulance
Wartburg, TN
(423) 346-6601
- Morgan County Sheriff
Wartburg, TN
(423) 346-6262
- Morgan County Medical Center
224 Old Mill Road
Wartburg, TN
(423) 346-6221
- Roane Medical Center
412 Devonia Street
Harriman, TN
(865) 882-1323
- Ambulatory Care Center
1235 Knoxville Hwy
Wartburg, TN
(423) 346-5566